

**Austin-Bergstrom International Airport
Aviation Activity Report
Calendar Year 2017 vs 2016**

Combined Terminals

	12/2017	12/2016	Percent Change	01/2017 - 12/2017	01/2016 - 12/2016	Percent Change
ABIA						
Total Passenger Activity						
Domestic Enplaned Revenue	571,768	501,413	14.03	6,538,285	5,960,465	9.69
Domestic Deplaned Revenue	541,042	483,986	11.79	6,489,151	5,937,917	9.28
International Enplaned Revenue	12,014	12,072	-0.48	143,011	112,910	26.66
International Deplaned Revenue	10,873	10,915	-0.38	142,708	118,184	20.75
Domestic Enplaned Non-Revenue	13,395	11,074	20.96	161,702	131,708	22.77
Domestic Deplaned Non-Revenue	12,809	11,020	16.23	154,379	131,465	17.43
International Enplaned Non-Revenue	99	66	50.00	1,181	939	25.77
International Deplaned Non-Revenue	96	64	50.00	1,007	928	8.51
Intl Enplaned Pre-Cleared Revenue	1,729	1,557	11.05	20,158	19,673	2.47
Intl Deplaned Pre-Cleared Revenue	1,802	1,834	-1.74	21,316	22,034	-3.26
Intl Enplaned Pre-Cleared Non-Revenue	17	29	-41.38	276	307	-10.10
Intl Deplaned Pre-Cleared Non-Revenue	29	37	-21.62	291	319	-8.78
South Terminal Domestic Enplaned Revenue	12,848	0	0.00	108,451	0	0.00
South Terminal Domestic Deplaned Revenue	11,985	0	0.00	107,309	0	0.00
South Terminal Domestic Enplaned Non-Revenue	3	0	0.00	51	0	0.00
South Terminal Domestic Deplaned Non-Revenue	4	0	0.00	29	0	0.00
ABIA Passenger Totals	1,190,513	1,034,067	15.13	13,889,305	12,436,849	11.68
<i>ABIA Enplaned Passenger Totals</i>	<i>611,873</i>	<i>526,211</i>	<i>16.28</i>	<i>6,973,115</i>	<i>6,226,002</i>	<i>12.00</i>
<i>ABIA Deplaned Passenger Totals</i>	<i>578,640</i>	<i>507,856</i>	<i>13.94</i>	<i>6,916,190</i>	<i>6,210,847</i>	<i>11.36</i>
<i>ABIA Domestic Passenger Totals</i>	<i>1,163,854</i>	<i>1,007,493</i>	<i>15.52</i>	<i>13,559,357</i>	<i>12,161,555</i>	<i>11.49</i>
<i>ABIA International Passenger Totals</i>	<i>26,659</i>	<i>26,574</i>	<i>0.32</i>	<i>329,948</i>	<i>275,294</i>	<i>19.85</i>

CURRENT PASSENGER RECORD = 1,310,174 RECORD SET = JULY 2017

Total Aircraft Operations

Air Carrier	10,608	9,540	11.19	123,441	113,427	8.83
Commuter & Air Taxi	1,311	1,258	4.21	15,334	16,322	-6.05
Military	557	603	-7.63	9,619	10,354	-7.10
General Aviation						
Itinerant	3,356	3,429	-2.13	48,881	49,213	-0.67
Local	124	150	-17.33	2,357	2,716	-13.22
Total G.A.	3,480	3,579	-2.77	51,238	51,929	-1.33
Total Operations	15,956	14,980	6.52	199,632	192,032	3.96

**Austin-Bergstrom International Airport
Aviation Activity Report
Calendar Year 2017 vs 2016**

By Terminal

	12/2017	12/2016	Percent Change	01/2017 - 12/2017	01/2016 - 12/2016	Percent Change
<u>Barbara Jordan Terminal (BJT)</u>						
Passenger Activity						
Domestic Enplaned Revenue	571,768	501,413	14.03	6,538,285	5,960,465	9.69
Domestic Deplaned Revenue	541,042	483,986	11.79	6,489,151	5,937,917	9.28
International Enplaned Revenue	12,014	12,072	-0.48	143,011	112,910	26.66
International Deplaned Revenue	10,873	10,915	-0.38	142,708	118,184	20.75
Domestic Enplaned Non-Revenue	13,395	11,074	20.96	161,702	131,708	22.77
Domestic Deplaned Non-Revenue	12,809	11,020	16.23	154,379	131,465	17.43
International Enplaned Non-Revenue	99	66	50.00	1,181	939	25.77
International Deplaned Non-Revenue	96	64	50.00	1,007	928	8.51
Intl Enplaned Pre-Cleared Revenue	1,729	1,557	11.05	20,158	19,673	2.47
Intl Deplaned Pre-Cleared Revenue	1,802	1,834	-1.74	21,316	22,034	-3.26
Intl Enplaned Pre-Cleared Non-Revenue	17	29	-41.38	276	307	-10.10
Intl Deplaned Pre-Cleared Non-Revenue	29	37	-21.62	291	319	-8.78
Barbara Jordan Terminal Passenger Totals	1,165,673	1,034,067	12.73	13,673,465	12,436,849	9.94
<i>BJT Enplaned Passenger Totals</i>	<i>599,022</i>	<i>526,211</i>	<i>13.84</i>	<i>6,864,613</i>	<i>6,226,002</i>	<i>10.26</i>
<i>BJT Deplaned Passenger Totals</i>	<i>566,651</i>	<i>507,856</i>	<i>11.58</i>	<i>6,808,852</i>	<i>6,210,847</i>	<i>9.63</i>
<i>BJT Domestic Passenger Totals</i>	<i>1,139,014</i>	<i>1,007,493</i>	<i>13.05</i>	<i>13,343,517</i>	<i>12,161,555</i>	<i>9.72</i>
<i>BJT International Passenger Totals</i>	<i>26,659</i>	<i>26,574</i>	<i>0.32</i>	<i>329,948</i>	<i>275,294</i>	<i>19.85</i>
<u>South Terminal (ST)</u>						
Passenger Activity						
South Terminal Domestic Enplaned Revenue	12,848	0	0.00	108,451	0	0.00
South Terminal Domestic Deplaned Revenue	11,985	0	0.00	107,309	0	0.00
South Terminal Domestic Enplaned Non-Revenue	3	0	0.00	51	0	0.00
South Terminal Domestic Deplaned Non-Revenue	4	0	0.00	29	0	0.00
South Terminal Passenger Totals	24,840	0	0.00	215,840	0	0.00
<i>ST Enplaned Passenger Totals</i>	<i>12,851</i>	<i>0</i>	<i>0</i>	<i>108,502</i>	<i>0</i>	<i>0</i>
<i>ST Deplaned Passenger Totals</i>	<i>11,989</i>	<i>0</i>	<i>0</i>	<i>107,338</i>	<i>0</i>	<i>0</i>

**Austin-Bergstrom International Airport
Aviation Activity Report
Calendar Year 2017 vs 2016**

	12/2017	12/2016	Percent Change	01/2017 - 12/2017	01/2016 - 12/2016	Percent Change
<u>Total Cargo Activity</u>						
Mail						
Domestic Enplaned Mail	235,378	210,594	11.77	2,342,691	1,699,864	37.82
Domestic Deplaned Mail	469,510	325,370	44.30	4,669,097	3,053,925	52.89
International Enplaned Mail	0	0	0.00	0	0	0.00
International Deplaned Mail	0	0	0.00	2	2	0.00
South Terminal-Intl Enplaned Mail	0	0	0.00	0	0	0.00
South Terminal-Intl Deplaned Mail	0	0	0.00	0	0	0.00
Mail Totals	704,888	535,964	31.52	7,011,790	4,753,791	47.50
Cargo						
Domestic Enplaned Cargo	5,102,655	5,382,879	-5.21	61,468,707	62,582,157	-1.78
Domestic Deplaned Cargo	7,289,487	7,826,890	-6.87	84,821,679	80,022,905	6.00
International Enplaned Cargo	693,009	527,282	31.43	9,222,215	6,007,466	53.51
International Deplaned Cargo	284,869	321,953	-11.52	5,163,334	4,505,762	14.59
South Terminal-Intl Enplaned Cargo	0	0	0.00	0	0	0.00
South Terminal-Intl Deplaned Cargo	0	0	0.00	0	0	0.00
Cargo Totals	13,370,020	14,059,004	-4.90	160,675,935	153,118,290	4.94
Belly Freight						
Domestic Enplaned Belly Freight	303,970	252,270	20.49	3,431,250	2,907,650	18.01
Domestic Deplaned Belly Freight	473,280	459,994	2.89	6,060,077	5,502,554	10.13
International Enplaned Belly Freight	321,862	194,104	65.82	3,384,848	1,736,088	94.97
International Deplaned Belly Freight	740,648	857,021	-13.58	8,798,737	6,721,309	30.91
South Terminal-Intl Enplaned Belly Freight	0	0	0.00	0	0	0.00
South Terminal-Intl Deplaned Belly Freight	0	0	0.00	0	0	0.00
Belly Freight Totals	1,839,760	1,763,389	4.33	21,674,912	16,867,601	28.50
Cargo Totals (Mail, Cargo, Belly Freight)	15,914,668	16,358,357	-2.71	189,362,637	174,739,682	8.37
<i>Enplaned Cargo Totals</i>	<i>6,656,874</i>	<i>6,567,129</i>	<i>1.37</i>	<i>79,849,711</i>	<i>74,933,225</i>	<i>6.56</i>
<i>Deplaned Cargo Totals</i>	<i>9,257,794</i>	<i>9,791,228</i>	<i>-5.45</i>	<i>109,512,926</i>	<i>99,806,457</i>	<i>9.73</i>
<i>Domestic Cargo Totals</i>	<i>13,874,280</i>	<i>14,457,997</i>	<i>-4.04</i>	<i>162,793,501</i>	<i>155,769,055</i>	<i>4.51</i>
<i>International Cargo Totals</i>	<i>2,040,388</i>	<i>1,900,360</i>	<i>7.37</i>	<i>26,569,136</i>	<i>18,970,627</i>	<i>40.05</i>

CURRENT CARGO RECORD = 40,215,518

RECORD SET = MARCH 2001

AUS – Airline Codes

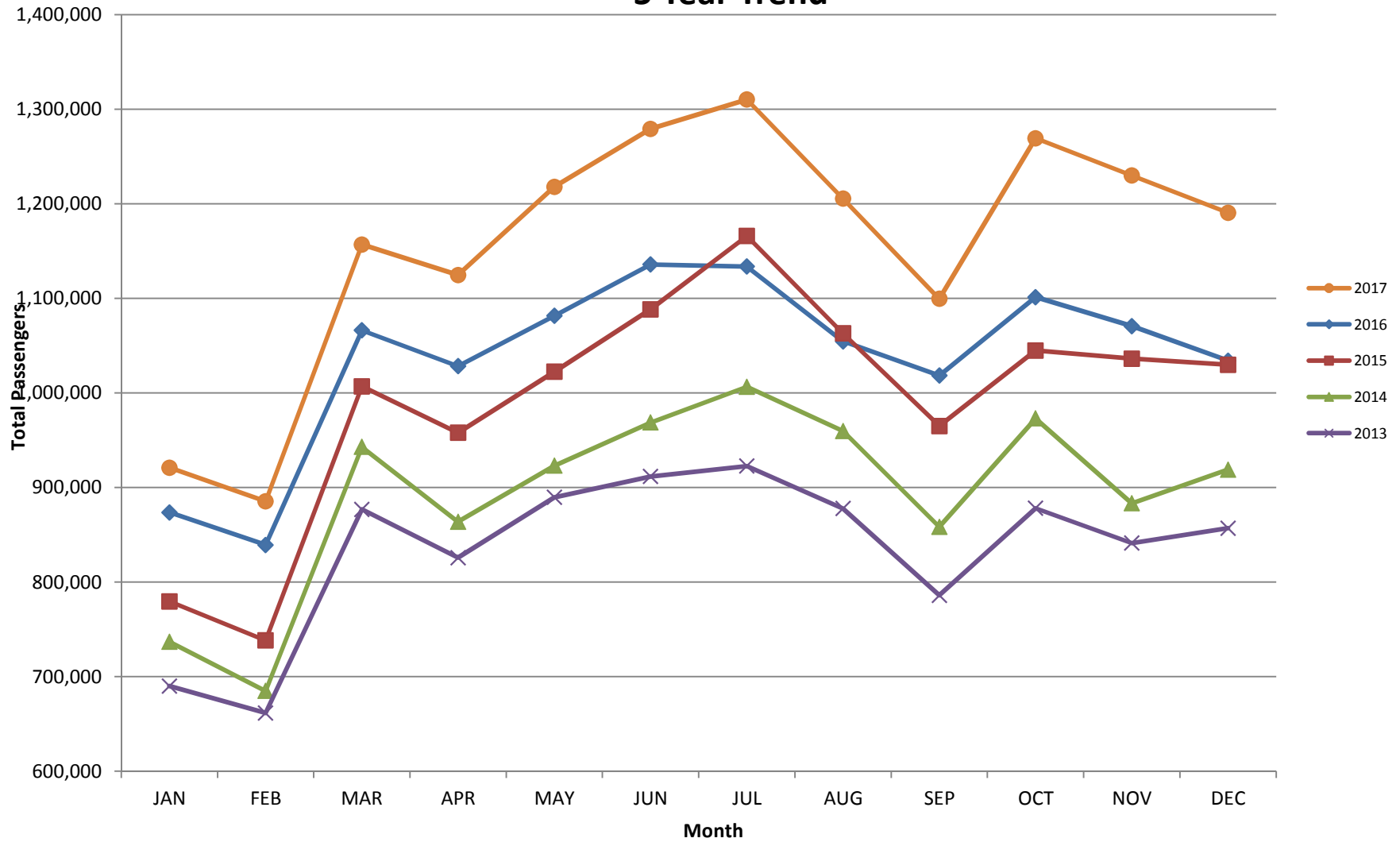
December 2017

<u>Code</u>	<u>Carrier</u>
AM	Aerovias de Mexico S.A. de C.V. dba AeroMexico Airlines
AC	Air Canada
AS	Alaska Airlines, Inc.
G4	Allegiant Air, LLC
AA	American Airlines, Inc.
BA	British Airways Plc
Y4	Concesionaria Vuela Compañía de Aviación, S.A.P.I. de C.V dba Volaris
DL	Delta Airlines
F9	Frontier Airlines
B6	JetBlue Airways Corp.
WN	Southwest Airlines
SY	Sun Country Airlines/ MN Airlines, LLC
UA	United Airlines, Inc.
VC	VIA Airlines
VX	Virgin America Inc.

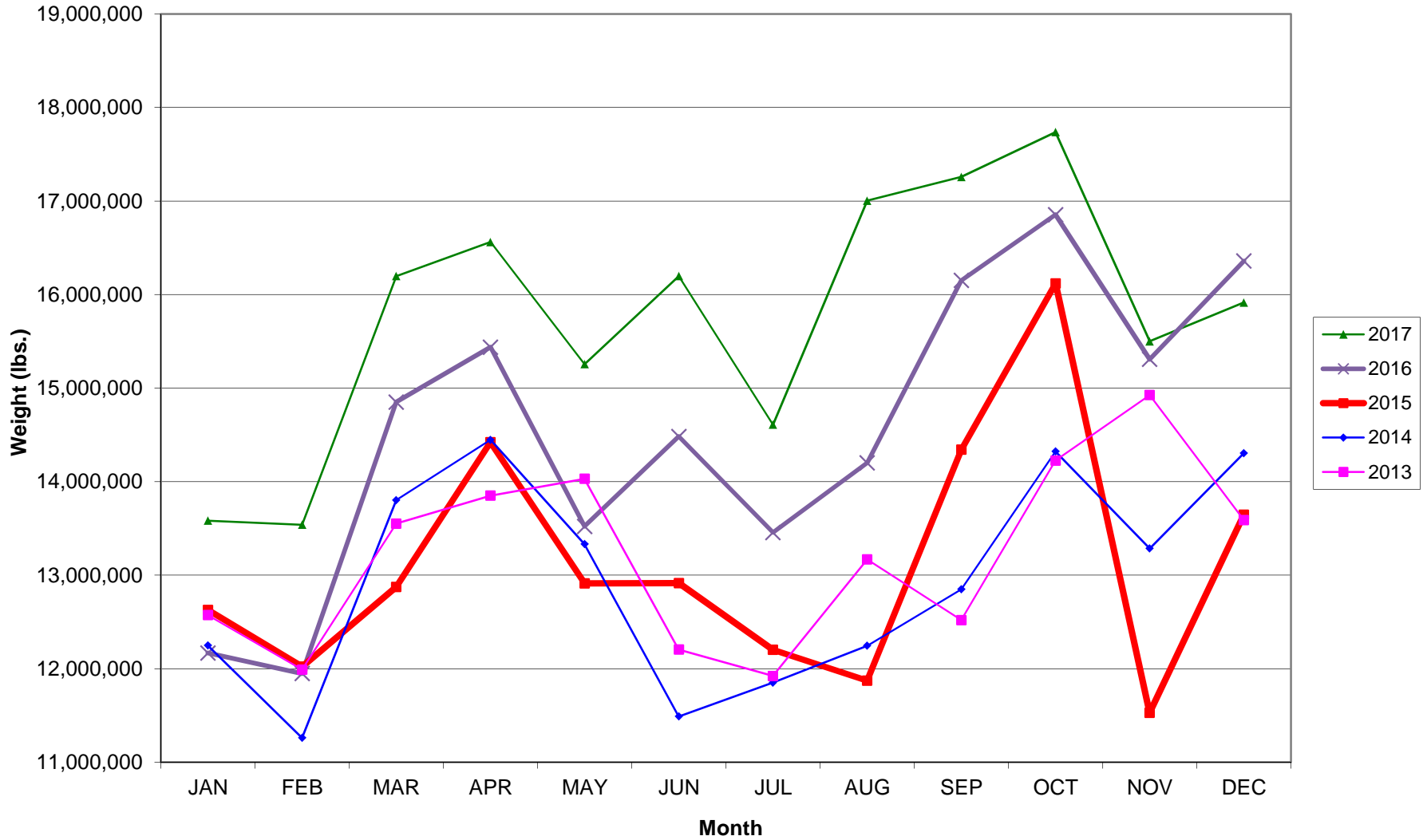
.

AUSTIN PASSENGER TRAFFIC

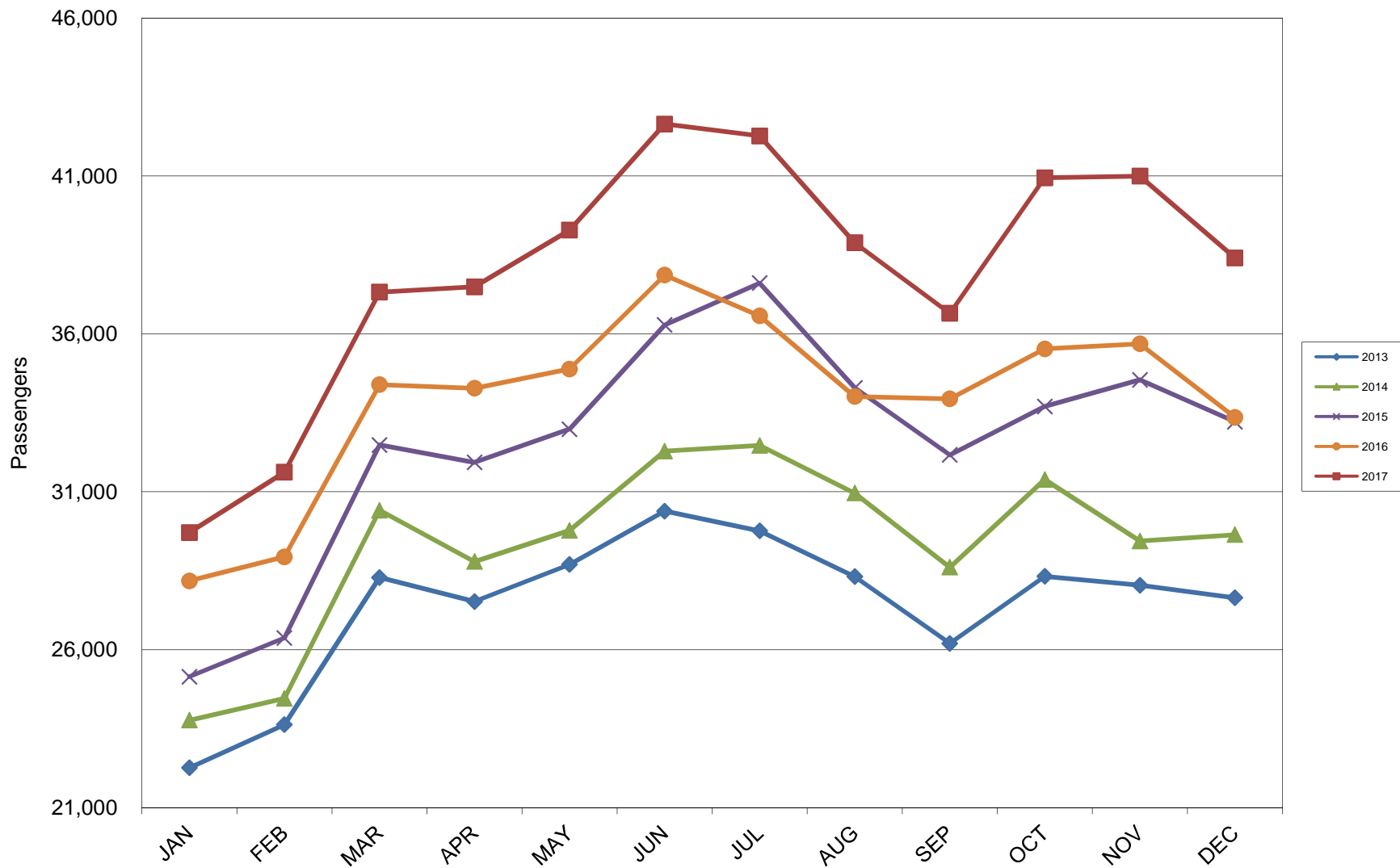
5 Year Trend



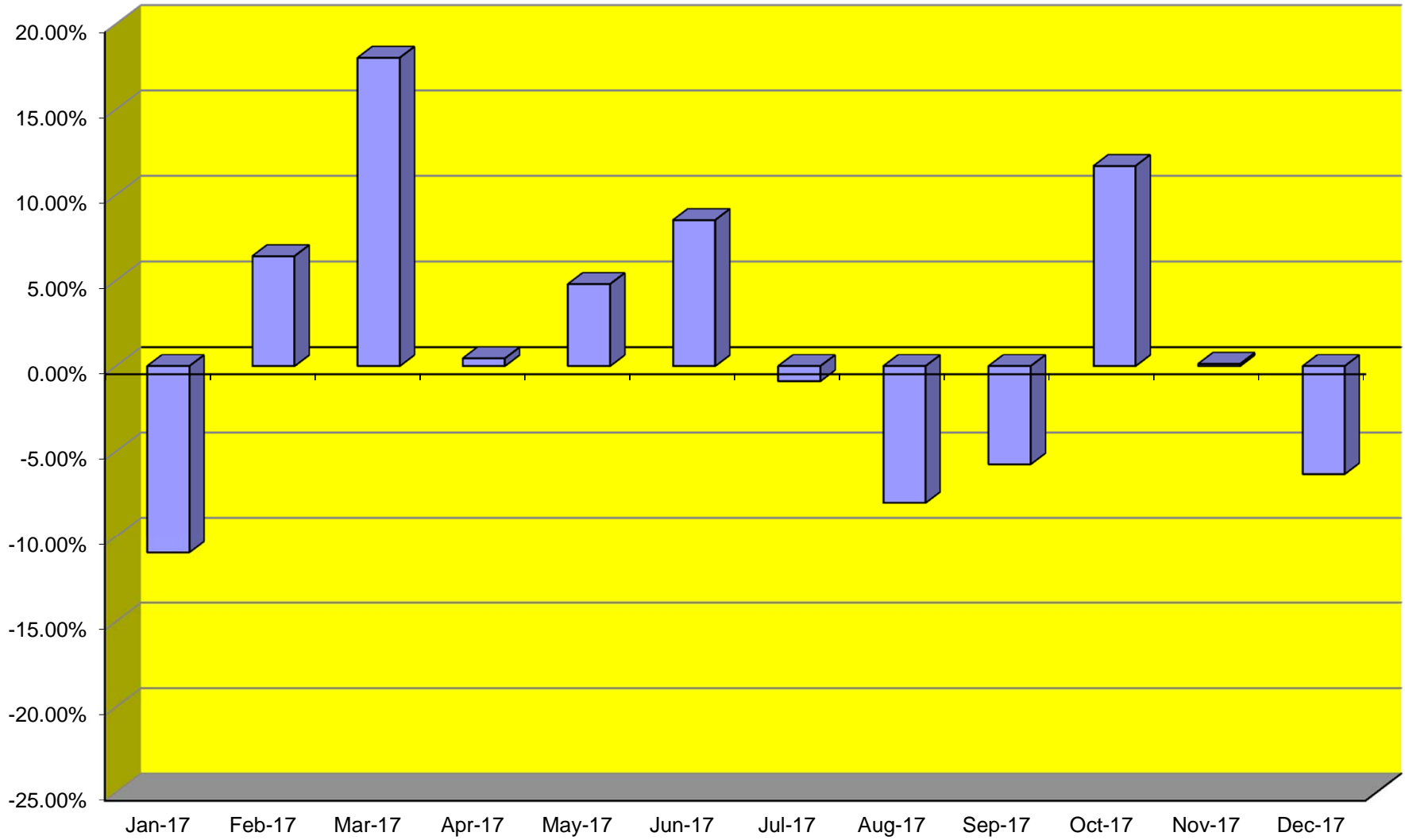
TOTAL CARGO POUNDAGE - AUSTIN, TEXAS



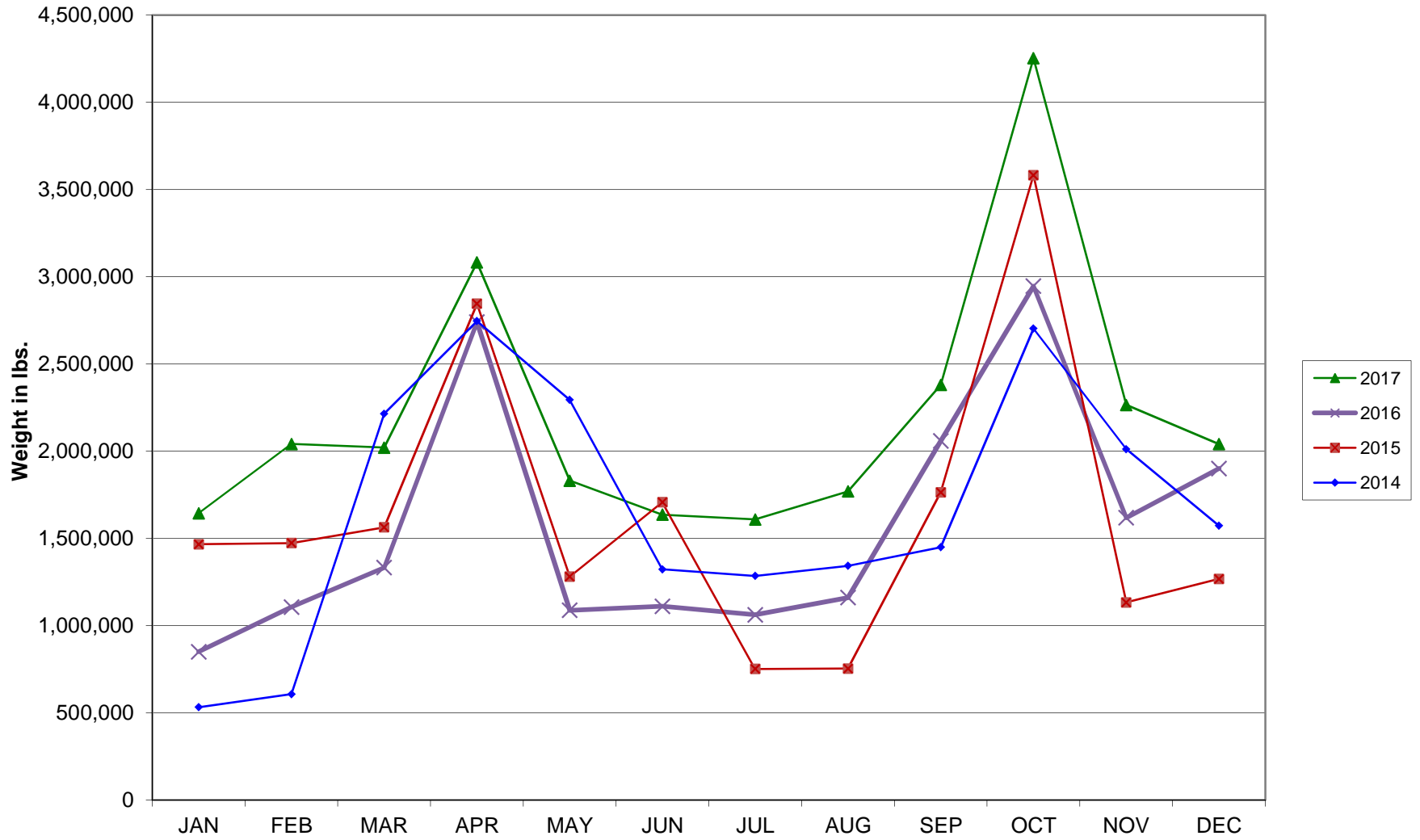
Average Daily Passengers



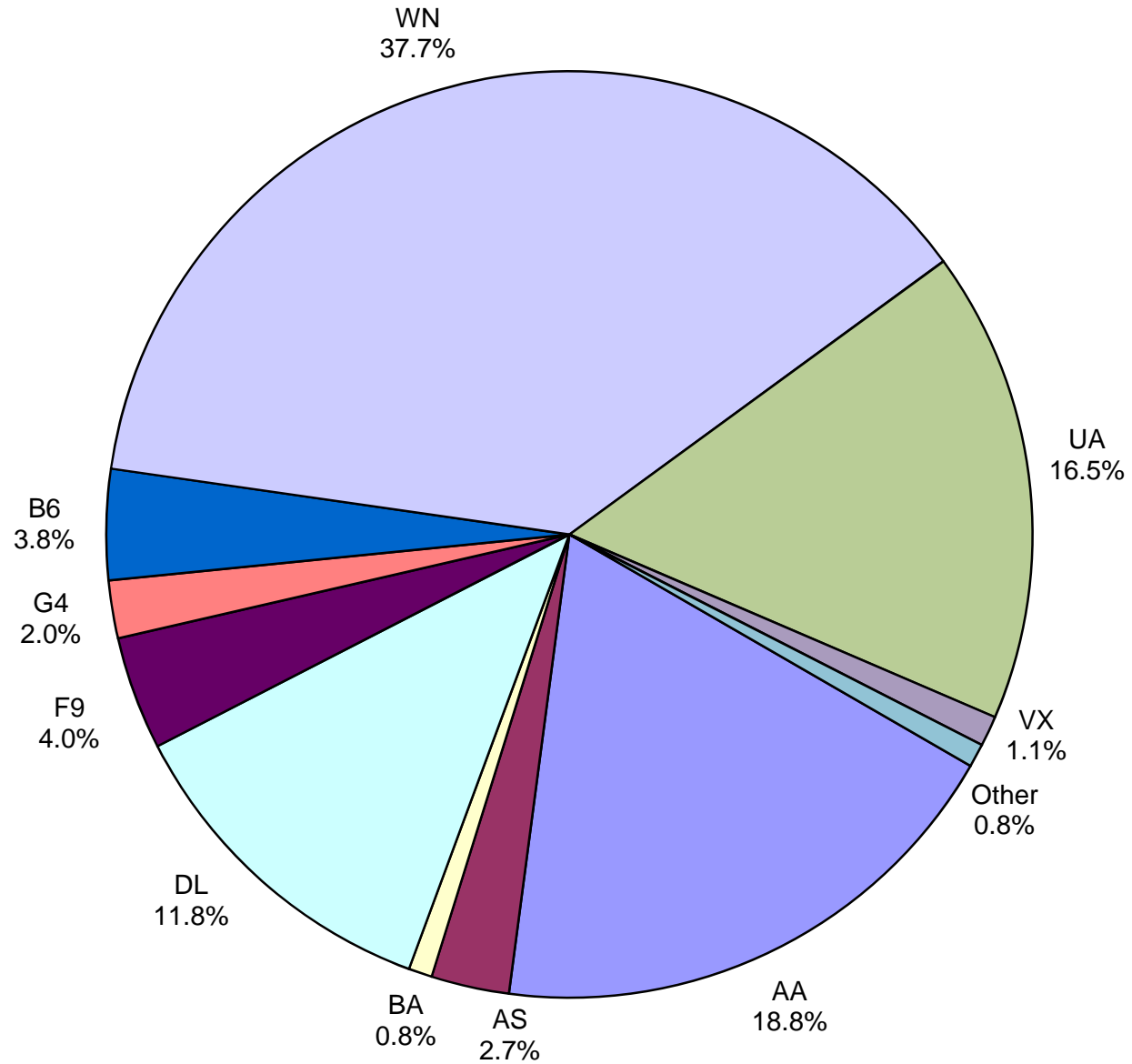
Monthly % Change in Average Daily Passengers



HISTORY OF INTERNATIONAL AIR CARGO



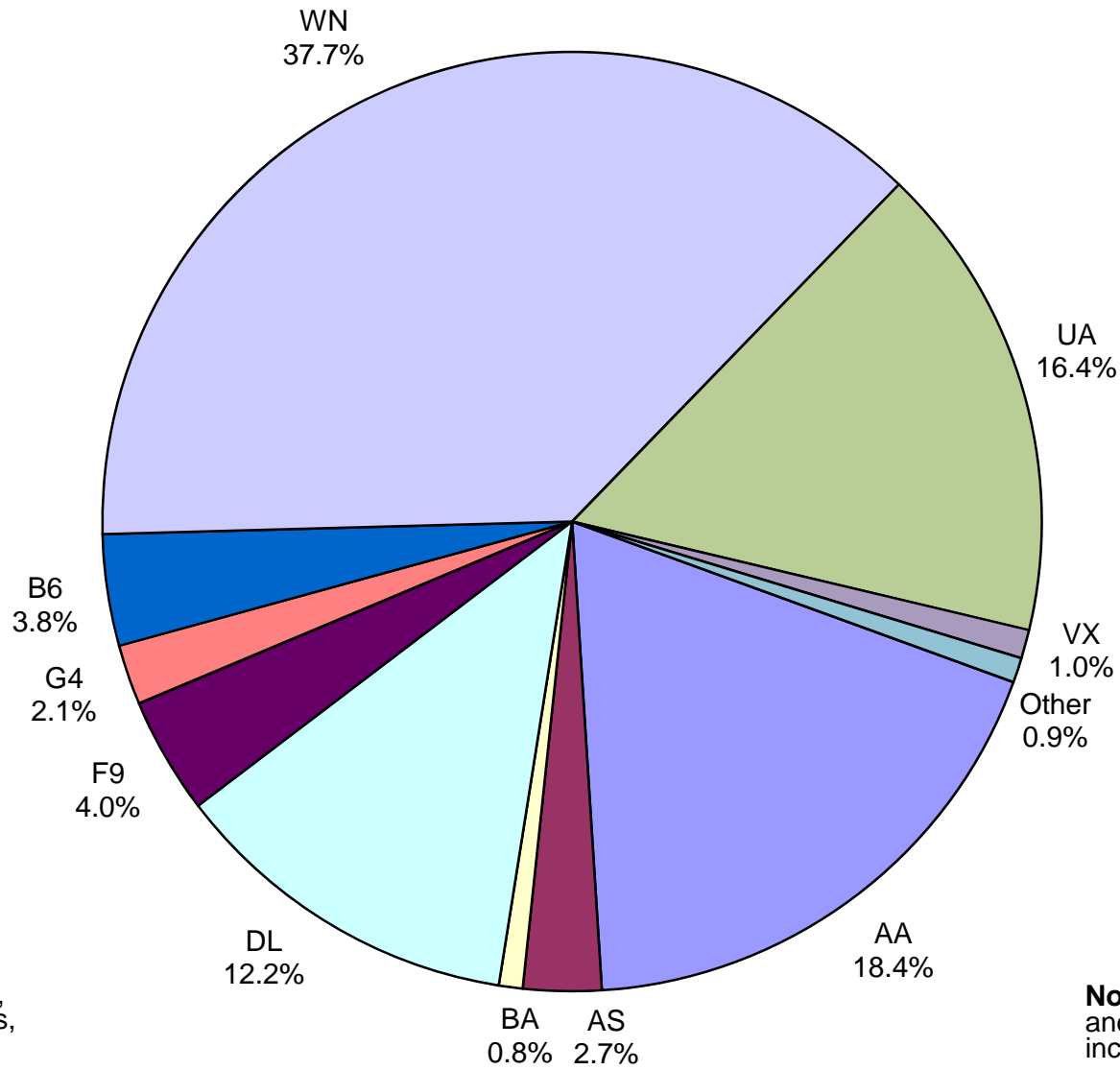
**Total Passengers
December 2017**



Other: Aeromexico, Air Canada LLC, Sun Country, VIA Airlines and Concesionaria Vuela dba Volaris

Note: American, Delta and United Airlines percentages include Affiliates.

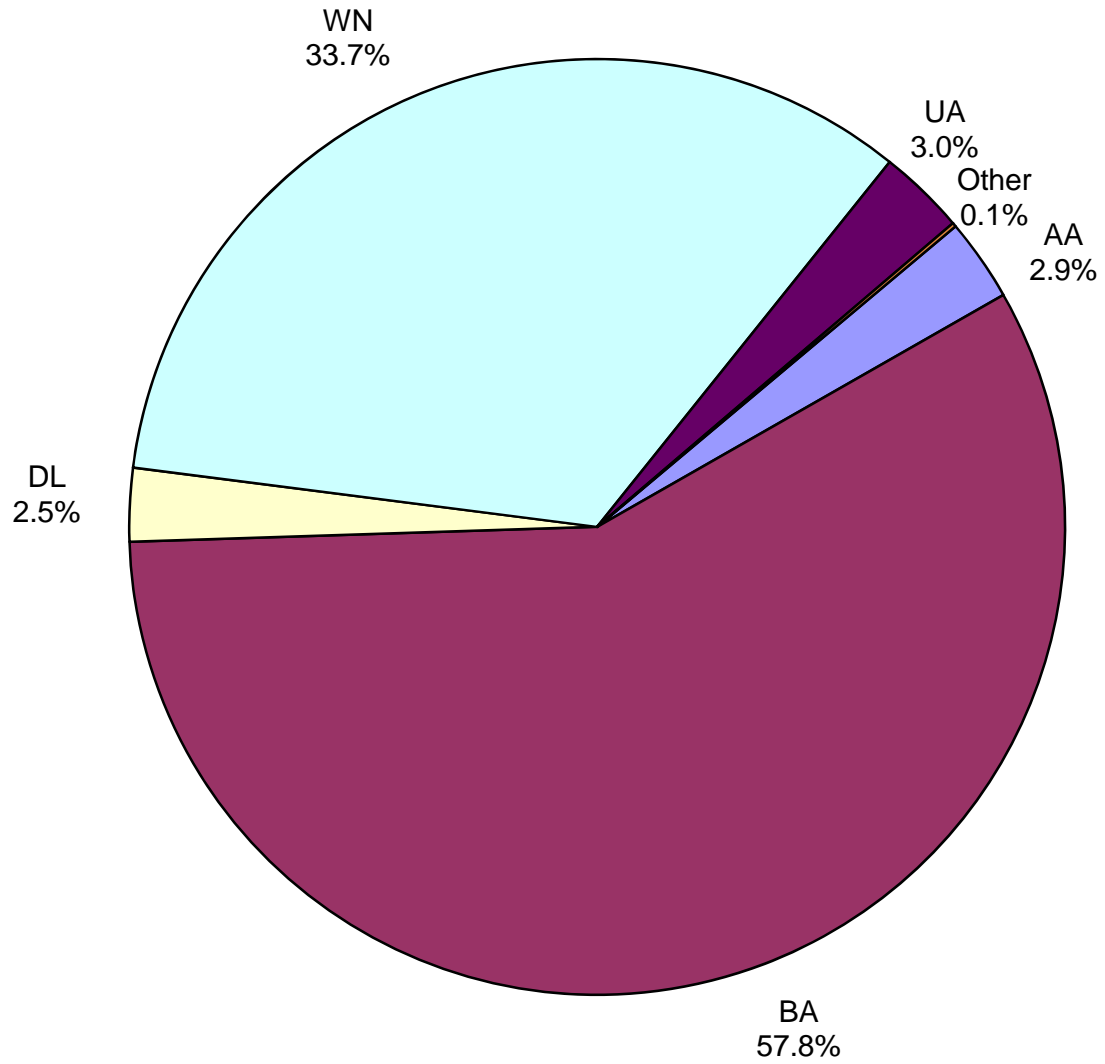
**All Passenger Carriers
Enplaned Revenue Passengers
December 2017**



Other: Aeromexico, Air Canada, Concesionaria Vuela dba Volaris, Sun Country and VIA Airlines

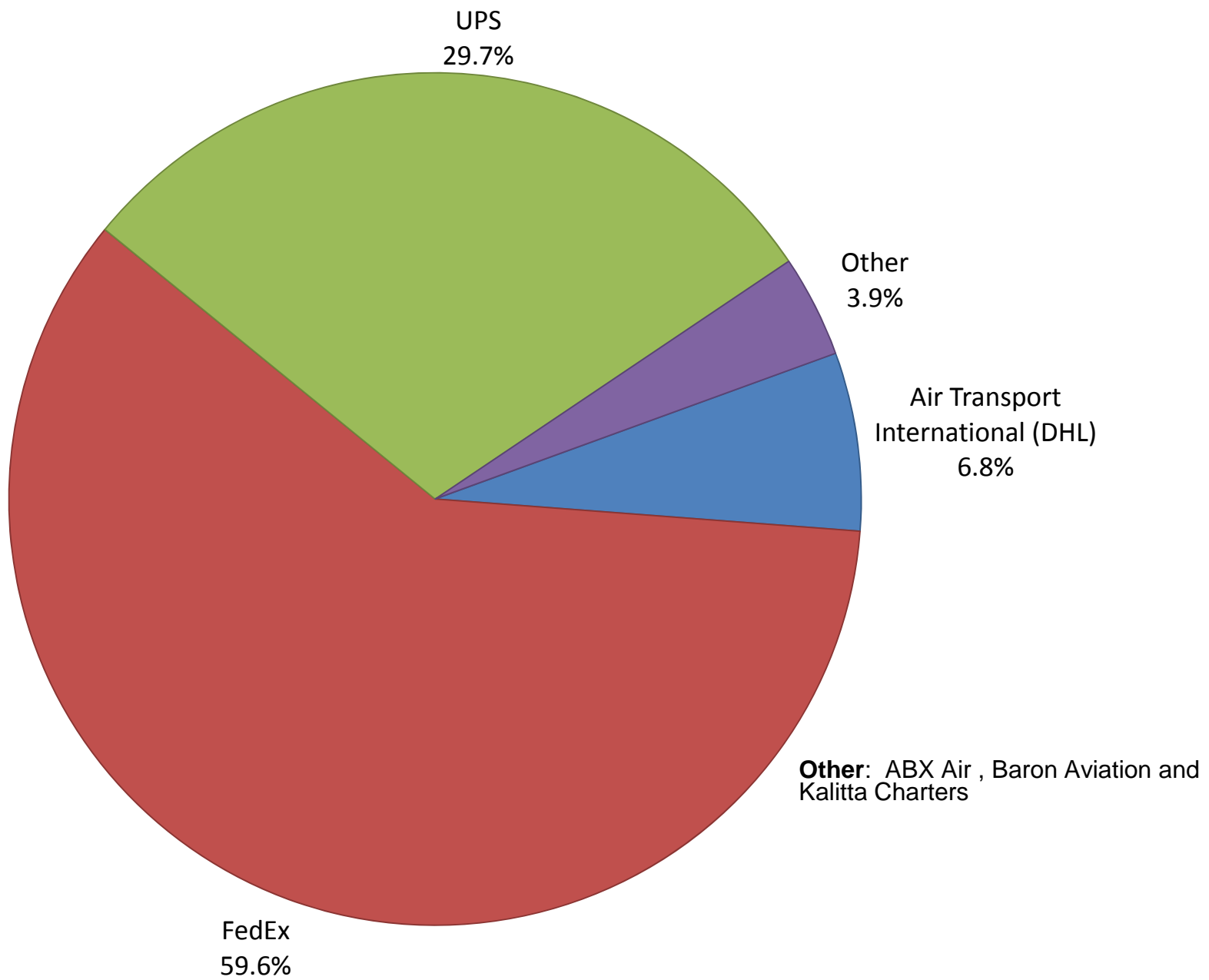
Note: American/US Airways, Delta and United Airlines percentages include Affiliates.

AUS Belly Freight Market Shares
December 2017

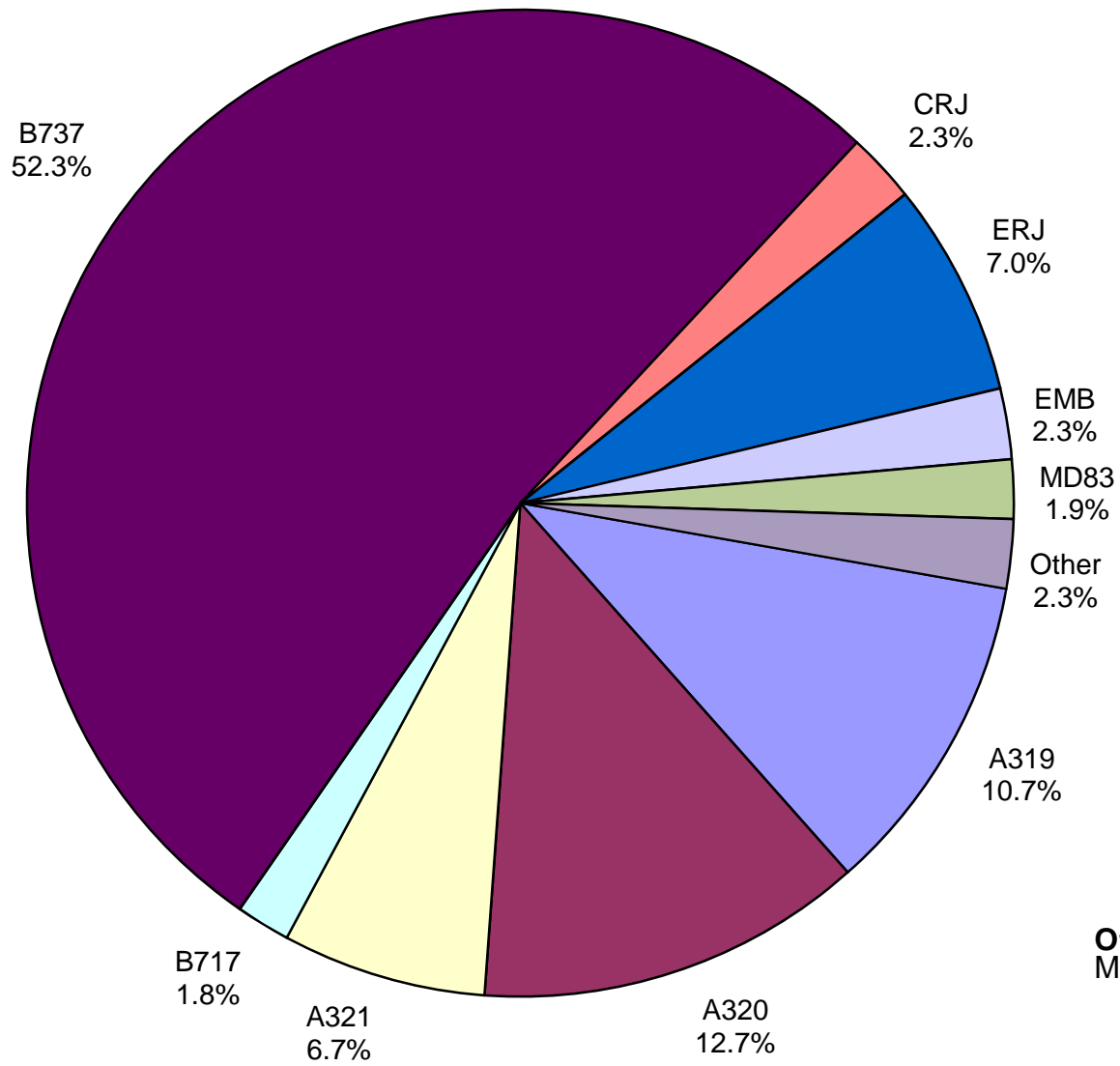


Other = Alaska Airlines

Air Cargo Market Share December 2017

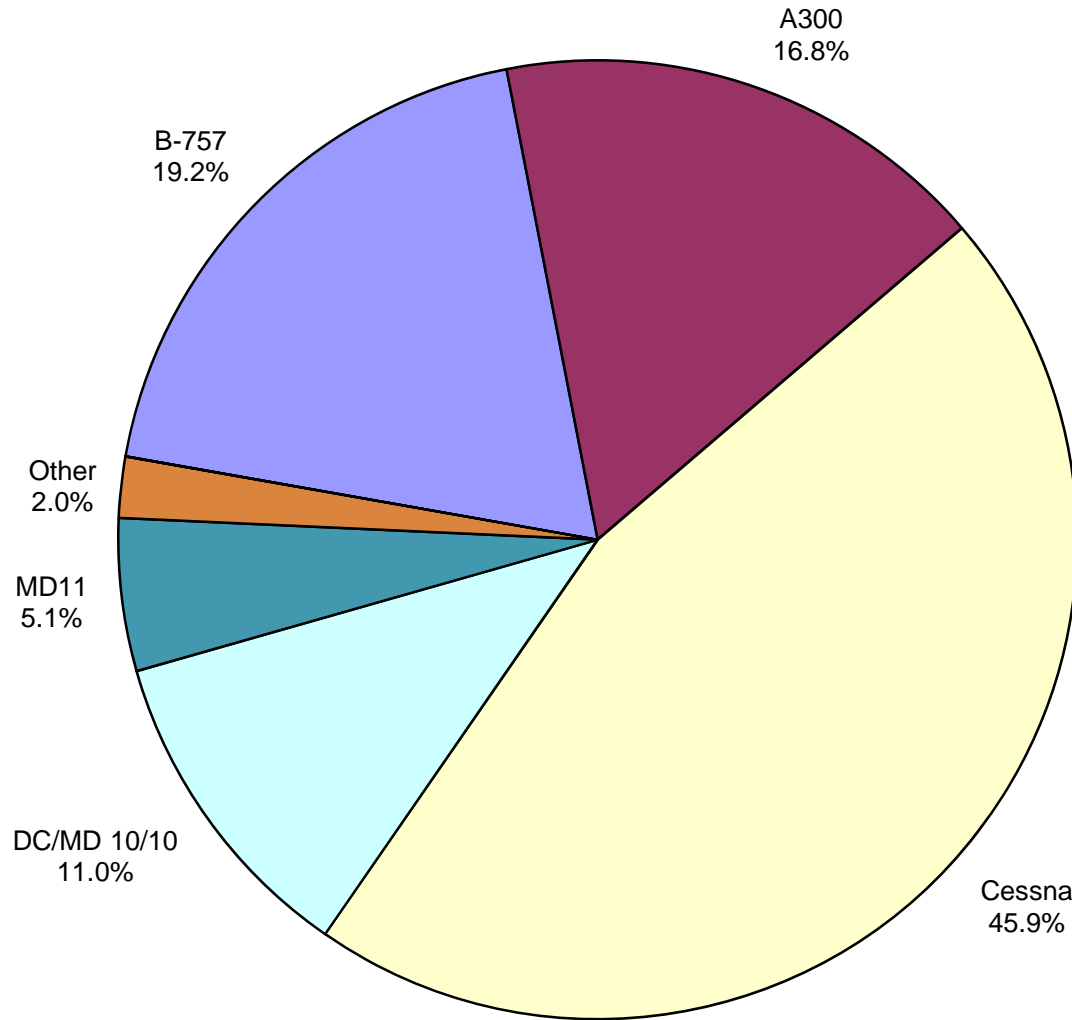


**AUS Scheduled Passenger Aircraft Fleet Mix
December 2017**



Other: B-757, B-787-900,
MD-82, MD-88 and MD-90

**AUS Scheduled Cargo Aircraft Fleet Mix
December 2017**



Austin-Bergstrom International Airport

PAX Detail Report - December, 2017

Company	12/2017	12/2016	Period		YTD 2017	YTD 2016	YTD		2017 Share	2016 Share	Share Diff
			Difference	Change			Difference	Change			
Aerovias de Mexico S.A. de C.V.	4,266	3,077	1,189	38.6	38,519	4,423	34,096	770.9	0.3	0.0	0.2
Air Canada	3,577	3,457	120	3.5	42,041	42,333	-292	-0.7	0.3	0.3	0.0
Alaska Airlines	32,447	18,448	13,999	75.9	289,549	225,128	64,421	28.6	2.1	1.8	0.3
Allegiant Air	24,085	16,808	7,277	43.3	267,961	173,830	94,131	54.2	1.9	1.4	0.5
American Airlines	223,229	203,247	19,982	9.8	2,628,573	2,531,289	97,284	3.8	18.9	20.4	-1.4
Ameristarjet Charter	0	0	0	0.0	0	14	-14	-100.0	0.0	0.0	0.0
Atlas Air	0	0	0	0.0	0	453	-453	-100.0	0.0	0.0	0.0
British Airways	9,779	10,030	-251	-2.5	128,920	129,941	-1,021	-0.8	0.9	1.0	-0.1
Concesionaria Vuela Compañía de Aviación, S.A.P.I. de C.V.	1,170	2,612	-1,442	-55.2	15,149	10,303	4,846	47.0	0.1	0.1	0.0
Condor Airlines	0	0	0	0.0	19,745	8,142	11,603	142.5	0.1	0.1	0.1
Delta Air Lines	140,620	123,634	16,986	13.7	1,776,567	1,530,740	245,827	16.1	12.8	12.3	0.5
Eastern Air Lines Group	0	0	0	0.0	0	163	-163	-100.0	0.0	0.0	0.0
Elite Airways, LLC	0	0	0	0.0	94	0	94	0.0	0.0	0.0	0.0
Frontier Airlines	47,107	23,146	23,961	103.5	480,801	315,501	165,300	52.4	3.5	2.5	0.9
Iberia Airlines	0	0	0	0.0	245	246	-1	-0.4	0.0	0.0	0.0
JetBlue Airways	45,825	44,346	1,479	3.3	596,189	562,667	33,522	6.0	4.3	4.5	-0.2
Miami Air International	0	0	0	0.0	635	751	-116	-15.4	0.0	0.0	0.0
Southwest Airlines	448,724	416,305	32,419	7.8	5,173,344	4,777,967	395,377	8.3	37.2	38.4	-1.2
Sun Country Airlines	221	180	41	22.8	6,943	5,062	1,881	37.2	0.0	0.0	0.0
Swift Air	0	0	0	0.0	1,554	0	1,554	0.0	0.0	0.0	0.0
Texas Sky	0	549	-549	-100.0	604	2,379	-1,775	-74.6	0.0	0.0	0.0
Turkish Airlines	0	0	0	0.0	0	376	-376	-100.0	0.0	0.0	0.0
United Airlines	196,303	154,053	42,250	27.4	2,262,060	1,941,357	320,703	16.5	16.3	15.6	0.7
VIA Airlines	534	0	534	0.0	3,412	0	3,412	0.0	0.0	0.0	0.0
Virgin America	12,626	13,855	-1,229	-8.9	156,264	171,361	-15,097	-8.8	1.1	1.4	-0.3
VivaAerobus	0	42	-42	-100.0	0	42	-42	-100.0	0.0	0.0	0.0
Xtra Airways/Casino Express	0	278	-278	-100.0	136	2,381	-2,245	-94.3	0.0	0.0	0.0
Report Totals	1,190,513	1,034,067	156,446	15.1%	13,889,305	12,436,849	1,452,456	11.7%			

Statistics Included in Report:

Domestic Passengers:	Enplaned Revenue, Deplaned Revenue, Enplaned Non-Revenue, Deplaned Non-Revenue
International Passengers:	Enplaned Revenue, Deplaned Revenue, Enplaned Non-Revenue, Deplaned Non-Revenue
International Pre-Cleared Passengers:	Enplaned Revenue, Deplaned Revenue, Enplaned Non-Revenue, Deplaned Non-Revenue
South Terminal Domestic Passengers:	Enplaned Revenue, Deplaned Revenue, Enplaned Non-Revenue, Deplaned Non-Revenue

Austin-Bergstrom International Airport

Summary Landing Report

Landing Type: Total

Month	2017		2016		2015		% Change 2017 - 2016		% Change 2016 - 2015	
	Count	Weight	Count	Weight	Count	Weight	Count	Weight	Count	Weight
January	4,768	612,688,871	4,622	560,718,408	4,480	530,688,382	3.16%	9.27%	3.17%	5.66%
February	4,357	552,711,639	4,387	527,452,920	3,992	477,489,019	-0.68%	4.79%	9.89%	10.46%
March	5,307	685,661,659	5,151	639,655,137	4,872	584,604,521	3.03%	7.19%	5.73%	9.42%
April	5,179	689,402,051	4,892	614,643,711	4,875	593,462,176	5.87%	12.16%	0.35%	3.57%
May	5,529	736,484,083	5,096	630,853,941	5,161	625,876,151	8.50%	16.74%	-1.26%	0.80%
June	5,603	752,628,599	5,179	651,537,449	5,239	644,690,908	8.19%	15.52%	-1.15%	1.06%
July	5,698	763,088,836	5,233	663,015,597	5,503	676,131,170	8.89%	15.09%	-4.91%	-1.94%
August	5,490	741,110,019	5,181	660,099,361	5,277	652,770,571	5.96%	12.27%	-1.82%	1.12%
September	5,046	679,381,339	4,738	623,397,035	4,833	598,547,454	6.50%	8.98%	-1.97%	4.15%
October	5,448	743,973,610	4,923	649,182,343	4,891	611,952,269	10.66%	14.60%	0.65%	6.08%
November	5,289	718,179,948	4,775	624,303,554	4,815	605,234,834	10.76%	15.04%	-0.83%	3.15%
December	5,442	737,424,963	4,893	629,611,090	5,100	633,215,540	11.22%	17.12%	-4.06%	-0.57%
Totals for Selected Period	63,156	8,412,735,617	59,070	7,474,470,546	59,038	7,234,662,995	6.92%	12.55%	0.05%	3.31%
Yearly Totals	63,156	8,412,735,617	59,070	7,474,470,546	59,038	7,234,662,995			0.05%	3.31%