

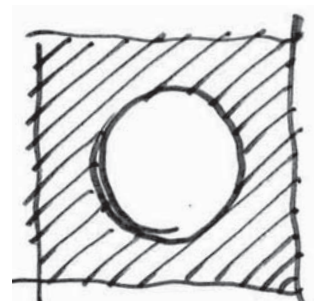
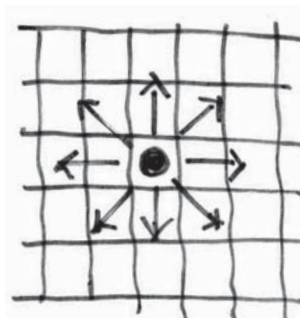
PREFERRED CONCEPT

This section describes the preferred concept for Republic Square as informed by the analysis and public feedback. It begins with a summary of the conceptual and formal layers of thought that underlie the preferred concept's design and experiential character. It then details the preferred concept's layout and intended performance through a series of plan diagrams.

Above; Acorns from the "Auction Oaks".

Preferred Concept

Building on Concept A, the preferred concept imagines park users as performers. This idea is rooted in the historic patterns of the Park’s role from the days of the famous auction. It looks to heighten the Park’s relevance for the greater Austin community and extend its influence beyond the confines of the Park’s edges.



Influential-
a distinct character driving decision-making in the area.

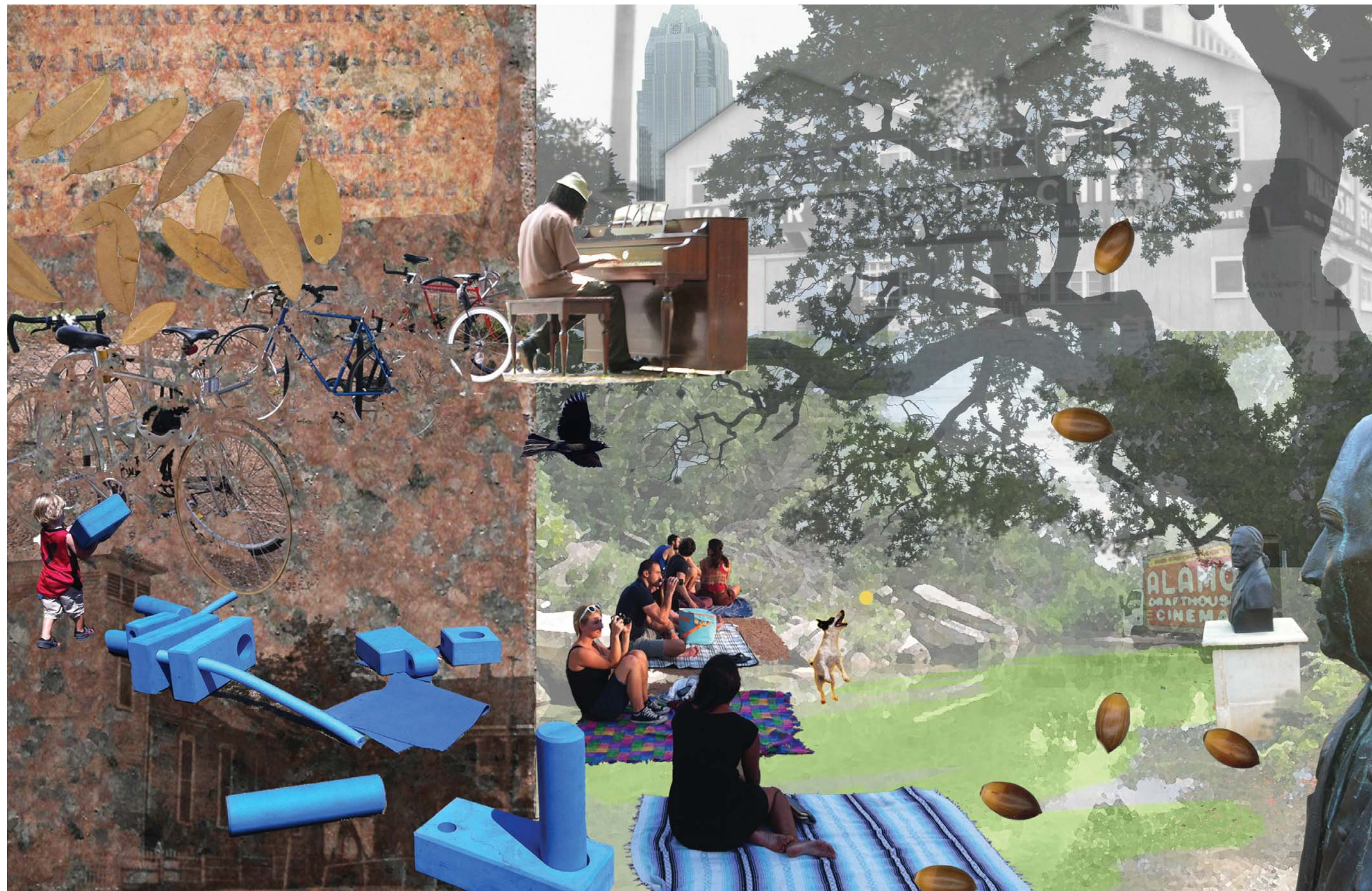
- positive connotation
- partner in nearby projects
- economic engine

Community Relevance-
a timeless design that is responsive to a changing community.

- regional and durable materials
- popular programming
- storytelling
- flexibility
- local pride

Design Narrative-
a natural performance space

- sense of nature
- choreographed
- sense of performance and audience
- physical forms driven by a thematic story



Layering and Narrative

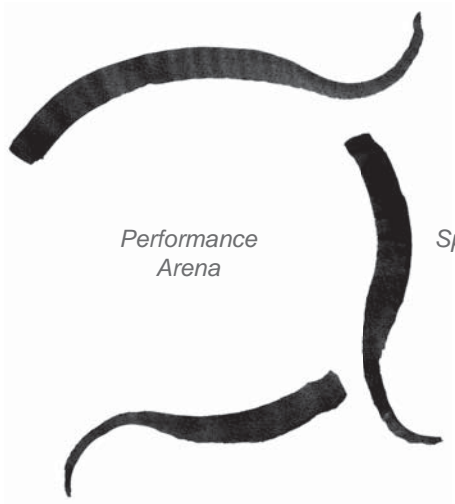
As outlined, the proposed park includes layers of influence, community, and design narrative. The layout of the park is responsive to the programming needs and existing conditions of the park, while the narrative represents the physical appearance and feel of what visitors experience. The layering of this park is defined by three distinct characteristics; a natural performance space, landscape formation and wall geology.



Concept A
Compound Arc



Concept C
Curvilinear Form



Preferred Concept
Interrupted Arc

This collection of images shows the top two organizational systems identified by public comment and how those two systems were combined to create the framework for the preferred concept.



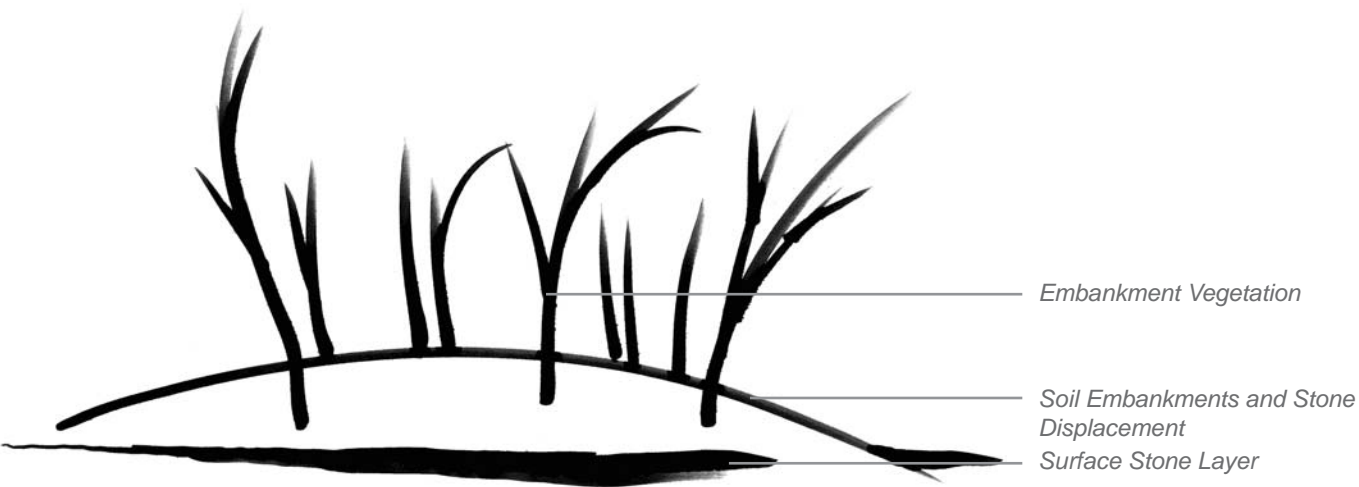
The Roman theater in Trier, Germany represents a formalized theater in the round.

...a natural performance space.

The particular strength of Concept A was its basis in theatrical performance. It was developed as a “theater in the round” option, which features a flexible open space surrounded by seating for spectators. The goal for the preferred concept was to create this type of space, but in a way that felt more naturalistic. Interruptions were added to points in the arc that made sense for pedestrian flow while metaphorically breaking down the formal composition of Concept A.

Landscape Formation

Forms, topography, planting and other associated features are derived from the process of flooding, deposition and weathering found within native creek systems.

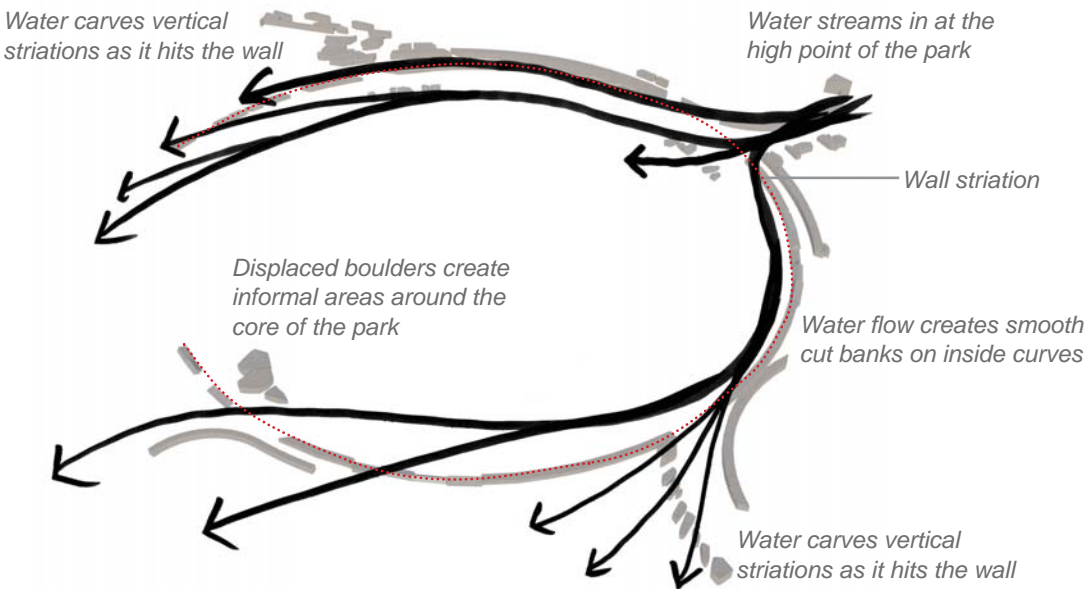


This image depicts many of the landscape ingredients found in the Park, and is set in the context of Waller Creek and Shoal Creek.

- Stone faces in flowing portions of the creek bed show signs of vertical weathering and often include plant materials growing in cracks.
- Surface Stone Layer; This layer feels like it is always just below the surface and it provides a footing for everything above.
- Plantings along the higher embankments tend to include woody shrubs and other hardy vegetation that is not regularly swept away by flooding events.
- Plantings at the average water line are sparse, grassy and mixed between displaced surface stones.

Wall Geology

The framework of the park is defined by a series of curved walls that are manipulated to show different signs of natural weathering. This narrative makes the walls an expressive and playful part of the park experience.



Striations in natural stone thread their way through local waterways and visually tie larger geologic forms together. The Park's proposed wall system includes an artificially made striation that works its way around the interior wall ring within the Park.



Rendering of the northeast entry point near 5th St and Guadalupe St, overlooking the main lawn. Granite walls function as seating around the perimeter of the Park, while a gracious promenade dotted with engaging light features carries visitors around the core area. The Park is anchored by a 25,000 square foot lawn space with 360 degree open views that create the feeling of audience and performers.



Rendering of the “Market Area.” This area includes room for games, movable seating and a generous walkway for strolling in the shade. During market events, this area can absorb over 30 tents, with the ability to also hold a large event tent at its western terminus.



Rendering of the Central Lawn during a concert or staged event.

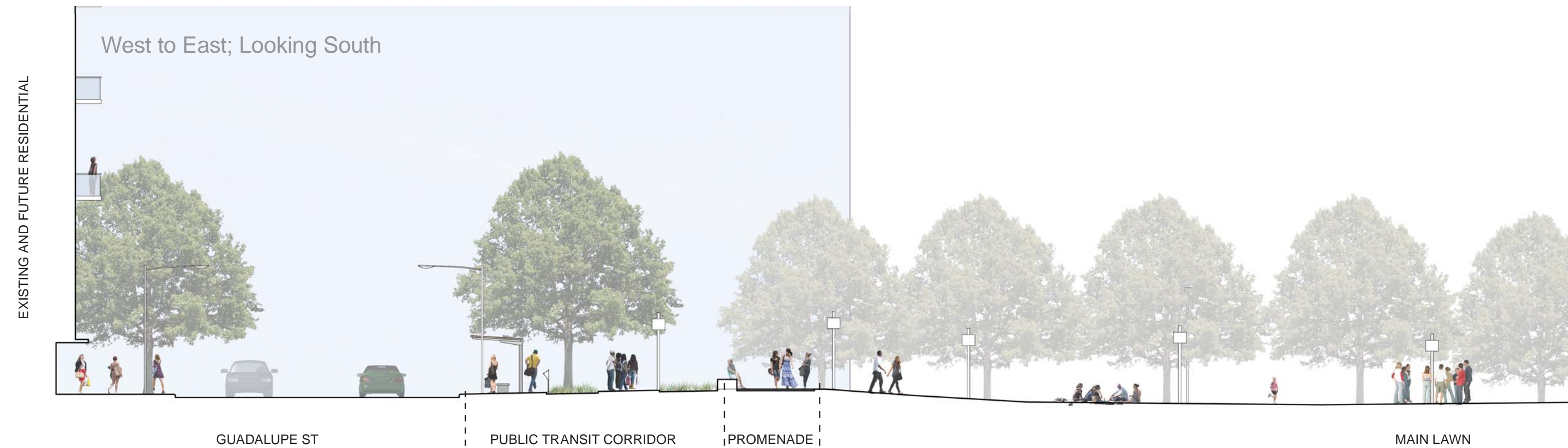


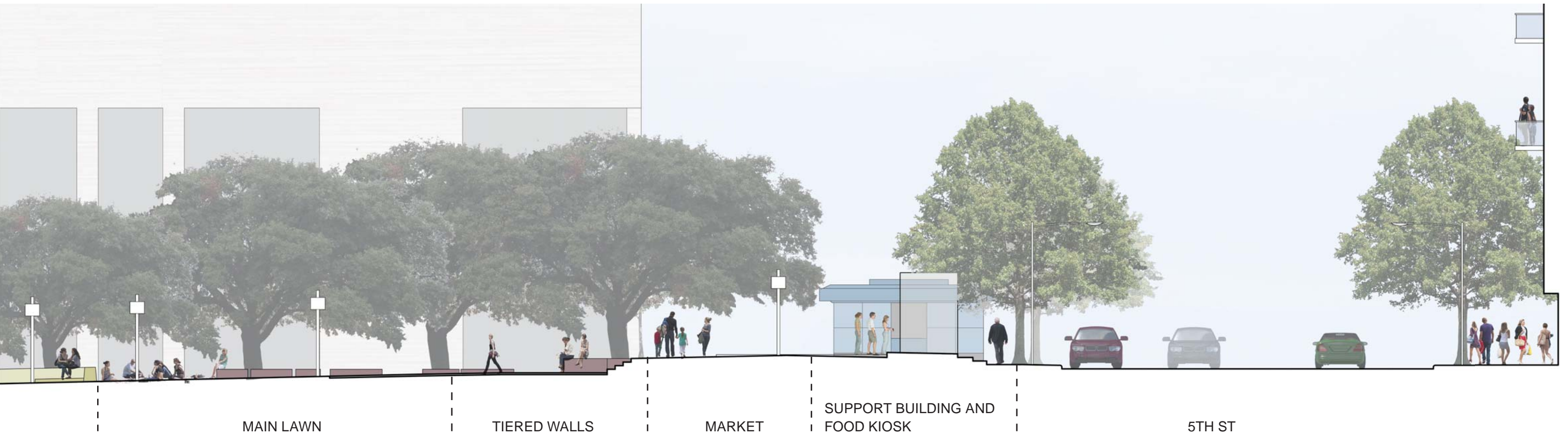
Preferred Concept Plan

The preferred concept for Republic Square includes a variety of flexible spaces while preserving much of the open feel that exists today.

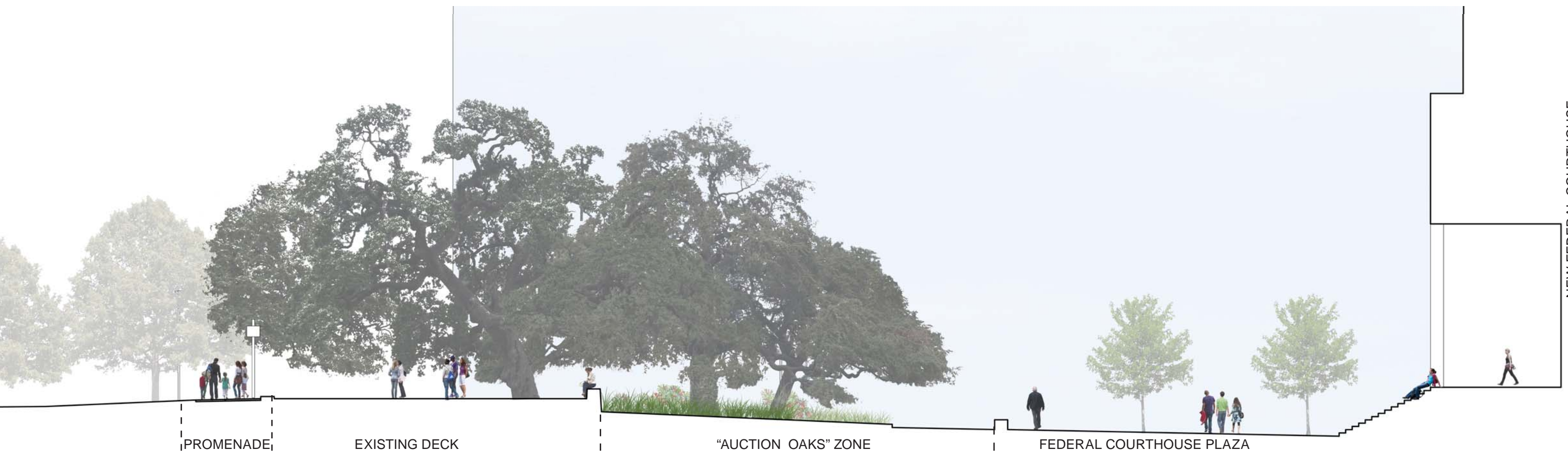
Legend

- A: Public Transit Corridor
- B: 5th St Corridor
- C: 4th St Corridor
- D: Federal Courthouse Plaza Zone
- E: Auction Oak Area
- F: Existing Deck
- G: Main Lawn
- H: Tiered Walls
- I: Arc Promenade
- J: Plaza Area
- K: Market Area
- L: Food Kiosk
- M: Support Building
- N: Primary Pedestrian Entrances
- O: CapMetro Stop





FUTURE POST OFFICE REDEVELOPMENT



NEW FEDERAL COURTHOUSE

Program

Similar to Concept A, the layout is based around a circular promenade which connects pedestrians to all four corners of the park, creates dynamic edge conditions and provides a flexible, central lawn for activities. The preferred concept also includes the multi-purpose area along the north edge of the Park from Concept B.

A: Public Transit Corridor- This area is generally a waiting space for CapMetro users. It includes waiting shelters, vehicular access for the event loading, furnishings, bicycle corral, CapMetro signage, downtown wayfinding signage, irrigation and “Great Streets” light features. A bypass walkway located on the western edge of this space allows for Park users to circulate away from transit-related cuing, noise or other activity.

B: 5th St Corridor- This area includes on-street parallel parking, loading for both markets and the kiosk, short-term customer parking for the food kiosk, east-bound CapMetro bus stop, bicycle parking, irrigation, “Great Streets” lighting, vehicular access for the Park and landscaping. This area is also intended to include portions of the information and exhibits related to the 5th St Mexican-American Cultural Trail.

C: 4th St Corridor- This area includes on-street parallel parking, ADA parking, loading for both markets or events, future CapMetro rail activity, bicycle corral, irrigation, “Great Streets” lighting, vehicular access for the park, and interpretive material related to the “Auction Oaks.”

D: Federal Courthouse Plaza Zone- This area includes park lighting, a gravel pathway, landscaping, event/market space, cafe seating for the food kiosk, irrigation, and access/staging for volunteer work days.

E: Auction Oak Area- This area includes planting areas, barrier rails, irrigation, improved soils conditions and park lighting.

F: Existing Deck- The deck is a flex space that includes movable seating, interpretive material related to the “Auction Oaks” and functions as a self-contained event space or stage for a larger event.

G: Main Lawn- The overall lawn space includes both sloped and flat areas for seating, events, dog walking, informal sport activities, shaded seating, improved soil conditions, irrigation, and stormwater filtering during rain events.

H: Tiered Walls- These areas include layered seating with views across the park and playful features that are attractive to children.

I: Arc Promenade- The main loop walk includes park lighting, generous space for strolling, seating on almost all edges, park furnishings and interesting views across the park. It is meant to be the primary circulator for people moving around and through the park.

J: Plaza Area- This area is a flexible use space that includes tie-downs for large tents, perimeter seating, park furnishings, park lighting, service for a future water feature or play feature and cafe seating associated with the food kiosk.

K: Market Area- The market includes a trio of spaces meant for event use and daily community use. It features a raised boardwalk that can accommodate seating and support for program such as ping-pong, board games, or a mobile library. The boardwalk also protects existing raised tree roots in the area. A main walk down the center provides both decorative paving associated with Mexican-American themes and short term vehicular access during loading and comfortable pedestrian space during events. The southern-most edge is a soft-surface space that allows for event use and activities such as bocce, washers, horseshoes and other games.

L: Food Kiosk- This is a 200-300 SF structure that accommodates food sales within the Park.

M: Support Building- The support building includes bathrooms, park storage, and maintenance support.



L: Areas around Market Area function both as soft surface game areas and flexible seating space.



I: The Arc Promenade features a wide range of stone seating areas, as well as creative elements that add a playful nature to the park.



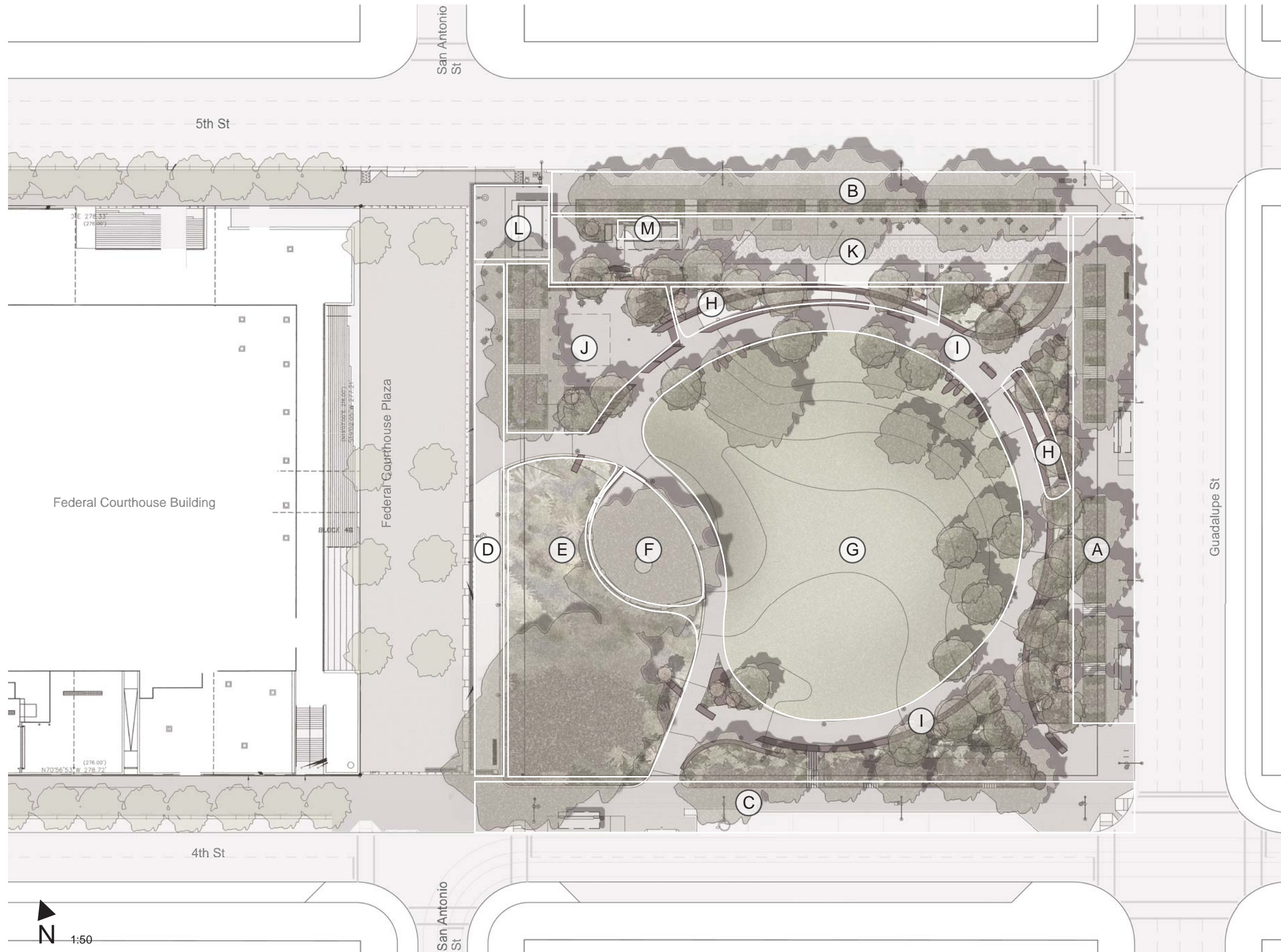
F, J, L: Several areas of the park can accommodate seasonal, temporary or regularly programmed special uses, such as a rolling library.



M: The provision of food in the park is a wonderful opportunity to provide greater community service/relevance and increase overall Park revenues.



G: The main lawn has many roles in the function of the park, but none more important than its green and vibrant appearance in the heart of the city.



Program Plan

Legend

- A: Public Transit Corridor
- B: 5th St Corridor
- C: 4th St Corridor
- D: Federal Courthouse Plaza Zone
- E: Auction Oak Area
- F: Existing Deck
- G: Main Lawn
- H: Tiered Walls
- I: Arc Promenade
- J: Plaza Area
- K: Market Area
- L: Food Kiosk
- M: Support Building

87%

Area of park that is "flexible," can accommodate more than one use; Baseline is 85%

Event Plan

The Park is designed to host a range of events while staying open and usable to the local community. As the Park develops, the event programming should be entirely responsive to the operations and management realities associated with the Park, and the needs of the local community. Many significant features are proposed that will help reduce wear on the Park, while providing use for the community while events are not taking place.

A: South Loading Drive- This is a paved route that will hold up to heavy vehicular use and appear as a typical pedestrian surface when not in use. It includes a mountable curb and removable bollard along 4th St.

B: North Loading Drive- This paved route will also hold up to strenuous vehicular use and appear as a typical pedestrian surface when not in use. It includes mountable curbs and removable bollards along 5th St and Guadalupe St.

C: Market Area- These linear spaces can support temporary structures which line the promenade and Federal Courthouse Plaza. As shown, these spaces can accommodate up to 38 10'x10' tents.

D: Plaza Area- This area can accommodate a single 45'x45' tent or several smaller tents. Tie-downs will be installed in the paving to support this use.

E: Main Lawn- This space is approximately 25,000 SF and can accommodate events of up to 2,000 people. If the promenade is included in the calculation, the number increases to 35,000 SF, which would accommodate 350 people.

F: Existing Deck- This area is about 2,300 SF and can accommodate events of up to 23 people or can be used as a stage for larger events oriented toward the main lawn.

G: Main Perimeter Fence- This is the approximate route of a major event fence. The route should leave all perimeter circulation open and clear. Events with

this type of fence requirement should be limited to no more than 12 events per year.

H: Alcohol Sales Fence Layout- This section of fence shows a scenario where events selling alcohol can be held with controlled access to the sales area. This layout is flexible and can occur as needed.

I: Federal Courthouse Plaza Venue- This area may be able to accommodate events as needed, and there is a potential option for smaller events or secondary events if the building operator allows for such events or uses.

J: Federal Courthouse Plaza- This paved area is large enough is to support approximately fifty 10'x10' market tents. It should also be considered for ACL shuttle bus queuing, or other similar uses. However, any use of the Federal Courthouse Plaza would require an agreement with the building operator.

K: Portable Bathrooms- If needed, portable bathrooms for events should be located along the southern edge of the Park, with loading occurring along 4th St.

L: Food Kiosk- All events should keep access open to the kiosk and include the vendor to the greatest extent possible. Event loading or storage should not affect service or other operational aspects of the kiosk.

M: Support Building- Bathrooms in this building should not be utilized for major events, but should serve as facilities for smaller events or VIP use if alcohol is sold.



C: Farmers Market activity can be held in several areas to allow for expansion including the proposed market area and plaza.



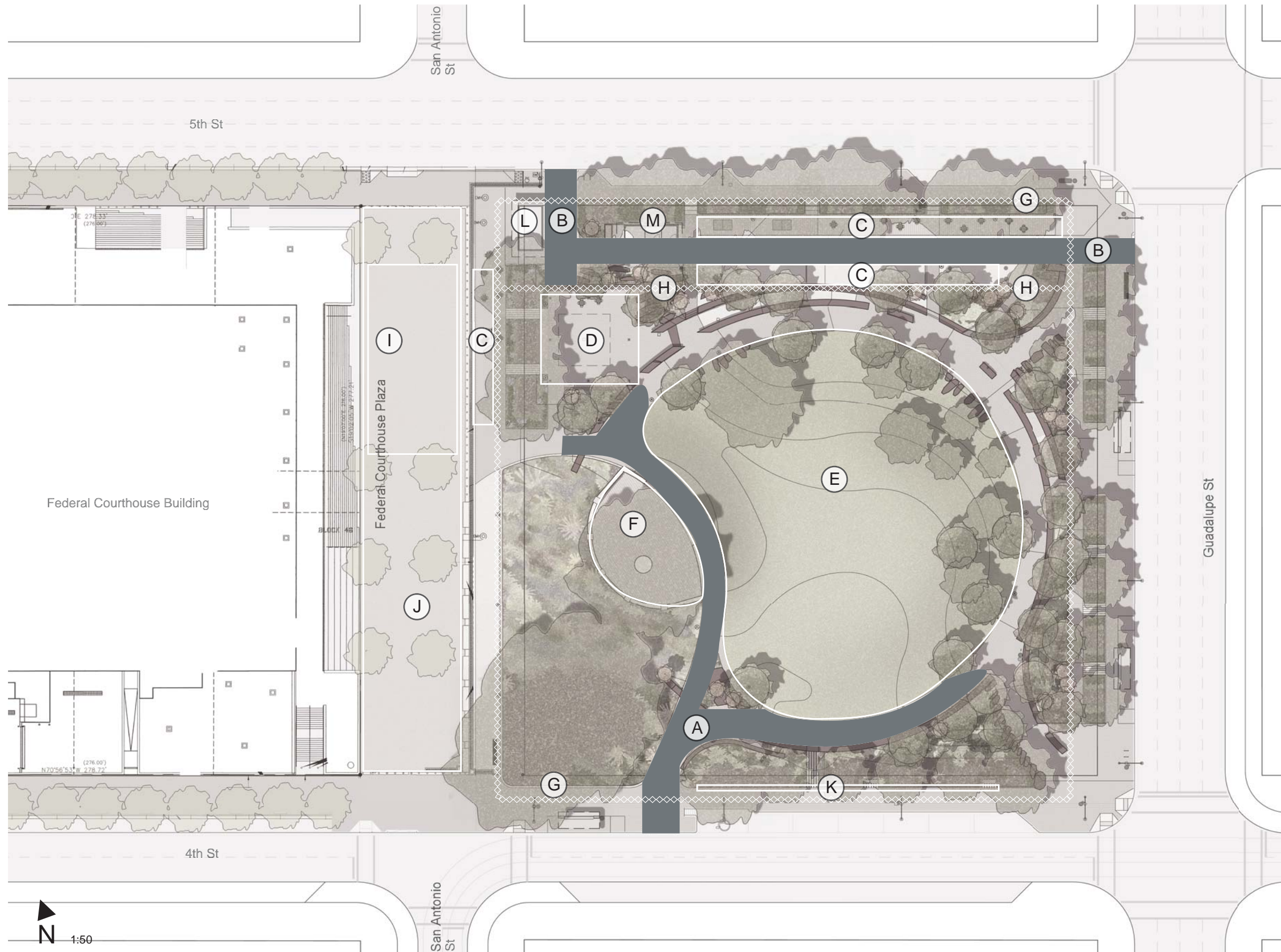
F: The existing deck can be used for controlled access vending, specialty seating or smaller events.



D: The proposed plaza allows for large tents to be set up for events.



D and E: The plaza and open lawn are able to accommodate large artistic or interactive exhibits similar to those installed during SXSW 2013.



Event Plan

Legend

- A: South Loading Drive
- B: North Loading Drive
- C: Market Space
- D: Plaza Area
- E: Main Lawn
- F: Existing Deck
- G: Main Perimeter Fence
- H: Alcohol Sales Fence Layout
- I: Federal Courthouse Plaza Venue
- J : Federal Courthouse Plaza
- K: Portable Bathrooms
- L: Food Kiosk
- M: Support Building

52%

Area of Park used by children on a regular basis; Baseline is 40%

52%

Area of Park used by teenagers on a regular basis; Baseline is 37%

75%

Area of Park used by adults on a regular basis; Baseline is 57%

59%

Area of Park used by seniors on a regular basis; Baseline is 40%

Hardscape

The hardscape plan is inspired by the layering of local creeks and waterways. It consists of a monolithic base level (reminiscent of exposed limestone bedrock) and native boulders in various stages of weathering. Other surfaces are designed to provide usable surface while protecting the critical root areas of existing trees. The palette is simple, intuitive for maintenance, context-sensitive and timeless.

A: Radiant Red Granite Tiered Wall- Central Texas boasts several different types and colors of granite. Many of the heritage sites around Austin feature this granite and have withstood the test of time; Republic Square should be no exception. Granite offers low maintenance, easy cleaning, vandalism resistance, as well as a variety of finishes and color variations. Source location: Fredricksburg, Texas (150 miles).

B: Radiant Red Granite Cobble (50% pervious)- The Park should include as much pervious paving as possible. The same granite used for the walls can be shaped into a pervious paving unit that blends well with other paving and wall types in the project. 4"x4"x4" Radiant Red Cobble, 3/8" spacing, grid pattern, crushed joint material to match gravel surface material. Source location: Fredricksburg, Texas (150 miles).

C: Charcoal Unit Paver (Vehicular)- The Federal Courthouse project includes a range of gray and charcoal pavers as part of its design. This project looks to build on that palette and create a contiguous, neutral ground plane that highlights vertical features and plantings. 3 1/8" x 5 13/16" x 11 3/4" Pavestone City Stone I, Running Bond or Radial Pattern, Charcoal Color, bituminous setting bed, 6" concrete sub-slab. Source location: San Marcos, Texas (35 miles).

D: Charcoal Unit Paver (Pedestrian)- 3 1/8" or 2 3/8" x 5 13/16" x 11 3/4" Pavestone City Stone I, Running Bond or Radial Pattern,

Charcoal Color, bituminous or sand setting bed, 4" concrete sub-slab. Source location: San Marcos, Texas (35 miles)

E: Charcoal Unit Paver (50% pervious)- This paving unit can be used in areas with exceptionally high surface roots, or in areas that will see lower foot traffic. They may require some additional maintenance over time, but give existing trees additional growth space and reduce the impacts associated with cast-in-place slabs. 3 1/8" x 4 3/4" x 9 7/16" Pavestone Eco-Prioria, Running Bond Pattern, Charcoal Color, sand and crushed aggregate setting bed. Source location: San Marcos, Texas (35 miles)

F: Crushed Stone Surface (50% pervious)- This material should be used between stepping stones, around pervious pavers and as the surface for game courts along the north portion of the site. It will need to be maintained/graded periodically and should be installed in compacted lifts over a geotextile. Cactus Canyon Quarries, Burnt Cherry 4-30 mesh or approved equal. Source location: Marble Falls, Texas (50 miles).

G. ADA Ramp and Truncated Domes- 2 3/8" x 3 7/8" x 7 13/16" Pavestone ADA Paver, Basket Weave Pattern, Charcoal Color, Mortar in place with sanded flush joints, 4" concrete sub-slab. Adjacent ramp flares and surface should be standard broom finish concrete. Source location: San Marcos, Texas (35 miles).

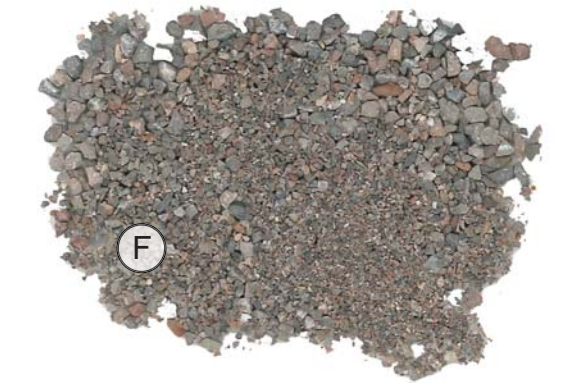
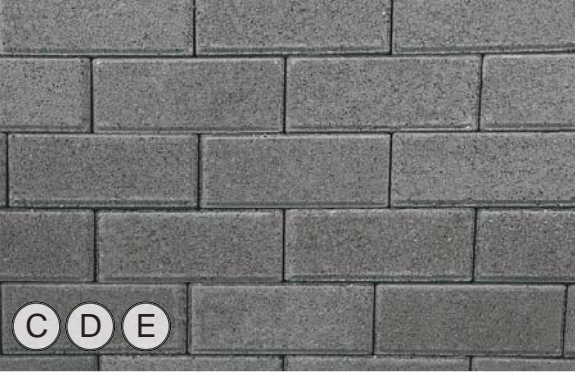
H: Cast-in-place Steps- Steps and adjacent walls near the plaza and kiosk should be made of concrete with a sandblasted finish to lightly expose internal aggregates. They should also include recessed step lighting cast into the riser of the steps. Concrete and much of its ingredients are easily sourced within a short distance of the park.

I: Ipe Decking (50% pervious)- Deck surfaces are required along the 5th St side of the park to preserve significant root areas that are somewhat higher in elevation than ideal

proposed conditions. This decking should match the general style and appearance of the existing deck. 1 1/2" x 3 1/2" Ipe decking set over steel or Ipe framing, with stainless steel fasteners. This is not a local or regional material, but does meet the durability and fire-resistance standards that should be applied to an urban park.

J: Leuders Limestone Paving (50% pervious)- Limited areas of the park should be paved with sand-set limestone pavers that include some gapping for water to percolate. 2 1/4" x 12" x 24" Leuders Limestone, Gray or Cream color, light split-face finish, 1" sand setting bed, geotextile above existing grade, minimum of 2" gapping on at least two sides of paver, fill gaps with crushed stone material. Source location: Leuders, Texas (250 miles).

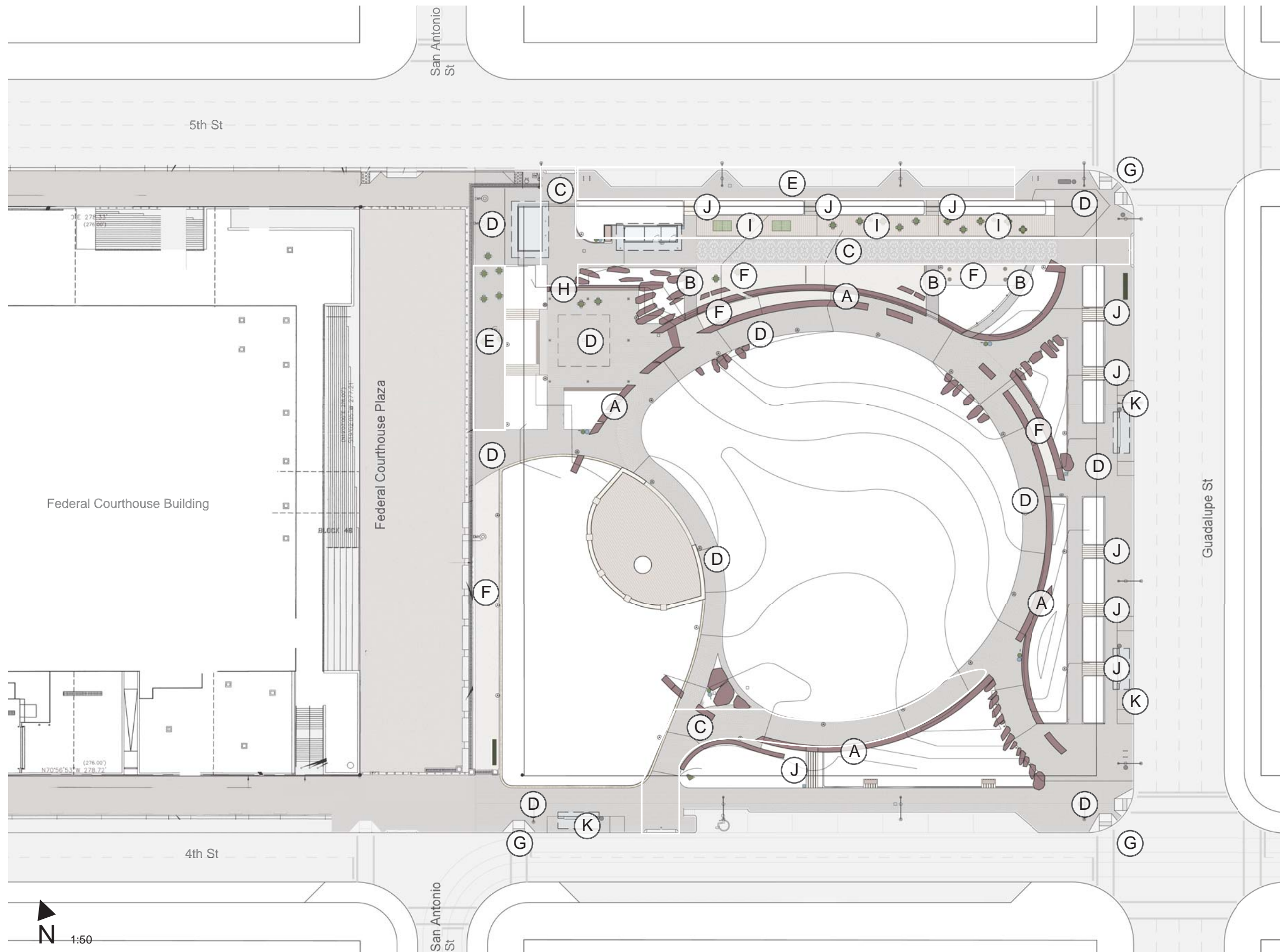
K: CapMetro Platform- This material should be consistent with the overall development, but does not need to be a paver surface. It can be a standard broom finish concrete, sandblasted concrete or red granite. Colored concrete, non-matching pavers, sheet metal or any configurations that feel temporary should be avoided.



Granite boulders will come in a range of natural finishes, shapes and sizes. Locations will be organized in the field based on the specific characteristics of each stone.



The stone will have a blended and seamless relationship with paving surfaces, much like they had always been there and were paved around.



Hardscape Plan

Legend

- A: Radiant Red Granite Wall
- B: Radiant Red Granite Cobble
- C: Charcoal Unit Paver (Vehicular)
- D: Charcoal Unit Paver (Pedestrian)
- E: Charcoal Unit Paver (50% pervious)
- F: Crushed Stone Surface
- G: ADA Ramp and Truncated Domes
- H: Cast-in-place Steps
- I: Ipe Decking
- J: Leuders Limestone Paving
- K: METRO Platform

63%

Percent of park cost from materials sourced fewer than 500 miles from the site.

38%

Total existing park impervious cover; Baseline is 25%

Furniture and Fixtures

Furnishings in Republic Square should support daily Park activity while diversifying the pedestrian environment and enhancing the visitor’s experience. The proposed plan specifies functional furnishings designed to limit vagrancy and other undesirable activities without detriment to the intended uses. Furnishings will ultimately be selected in light of PARD’s already established standards, but given the Park’s unique importance to the Austin, a more Park-specific product may be the best choice in some cases.

The furnishings along the Park’s perimeter should be selected and provided in partnership with the “Great Streets” program, as well as the CapMetro furnishing program. It is assumed that all furnishings within the streetscape will meet these program standards and will be maintained by those organizations.

A: Garbage and Recycling- The Park should include a simple surface mounted garbage bins. The PARD standard Scarborough unit is recommended within the park and should be painted Ivy with the top-opening option. The overall size is 30”x 38”. The units should also be engraved to read “Republic Square” vertically along one of the straps that form the exterior of the bin. This graphic should face the most prominent pedestrian area nearby. A recycling plan is recommended for whichever party handles Park maintenance, and a matching bin painted Ocean Blue should be used. The color and location of Park receptacles will be such that ownership can be easily distinguished.

B: Bench Seat- Linear lpe seats should be located along three sides of the Plaza Area to frame the space, protect the adjacent landscape and provide shaded seating. The lpe decking should match other surfaces in the park and will be supported by a simple steel frame with imbedded posts. The bench along the north edge of the plaza sits against a battered section of cast-in-place wall which forms a natural back rest. All portions of these benches should include an interruption at 4’ on center, which discourages skate boarding and sleeping.

C: Dog Waste Bag Dispenser- These Mutt Mitt boxes will be pole mounted adjacent to several garbage bin locations. The bags supplied for these features are 100% biodegradeable, which work with Austin’s recent initiatives to reduce plastics in landfills.

D: Water Fountain and Bottle Filling Station- This fixture provided by an organization called Globaltap, whose mission is to provide access to clean drinking water in public and/or civic locations. They are a funding resource and provide many configurations. The model shown is a free standing unit with both water bottle filling and ADA drinking fixtures. A wall mounted model with similar features would be used at the support building.

E. Tube Steel Rail- This simple, 1 1/2” diameter tube steel rail can be used to protect planting areas and similar systems have already proven effective in other urban parks. To discourage skateboarding, it should have welded ribs every 5-6’ on center.

F: Leaning Rail- These linear rail features extend down most of the eastern street edge to provide both functional waiting space for CapMetro riders as well as protection for trees and planting. Unlike regular bench seating, these rails do not accommodate sleeping and general loitering. Tube steel construction (similar to photo) is recommended as it reduces graffiti surface and collection of bird droppings.

G: Police Call Box- These features are installed on the north, east and south edges of the park. They provide quick access to police help and are a visual deterrent for crime. A dim blue light is mounted on the top of the pedestal to create visual presence at night.

H: Park Table- These tables will match the Landscapeforms Parc Centre tables already in used in other city parks. The new tables should be the 30” round version and should be painted Ivy color to reinforce the Park’s unique importance.

I: Park Chair- These chairs will match the Landscapeforms Parc Centre chairs already in used in other city parks. The all new chairs should be

painted Ivy color and should be engraved to read “Republic Square” horizontally along one of the straps that form the back of the chair.

J: Parking Meter (Per City Standard).

K: Bench (Per “Great Streets” Standard).

L: Trash Can (Per “Great Streets” or CapMetro Standard).

M: Bike Corral (fits 10-12 bicycles)- Creative Pipe Gauntlet Rack, angled tubes, surface mount. 5 Loop dimensions: 124”Lx36”Hx26”W.

N: Bike Rack (Per “Great Streets” Standard)

O: Removable Bollard (Bollard Solutions)- This is a simple stainless steel tube with the ability to drop into an underground sleeve to prevent the bollard from being lost or stolen when removed for vehicular access.

P: Washer Pits- Washer pits should include a 1/4” wall steel frame pinned to grade, with a steel or cast iron cup in the center. The interior of the frame can be filled with crushed aggregate to match adjacent surfaces.

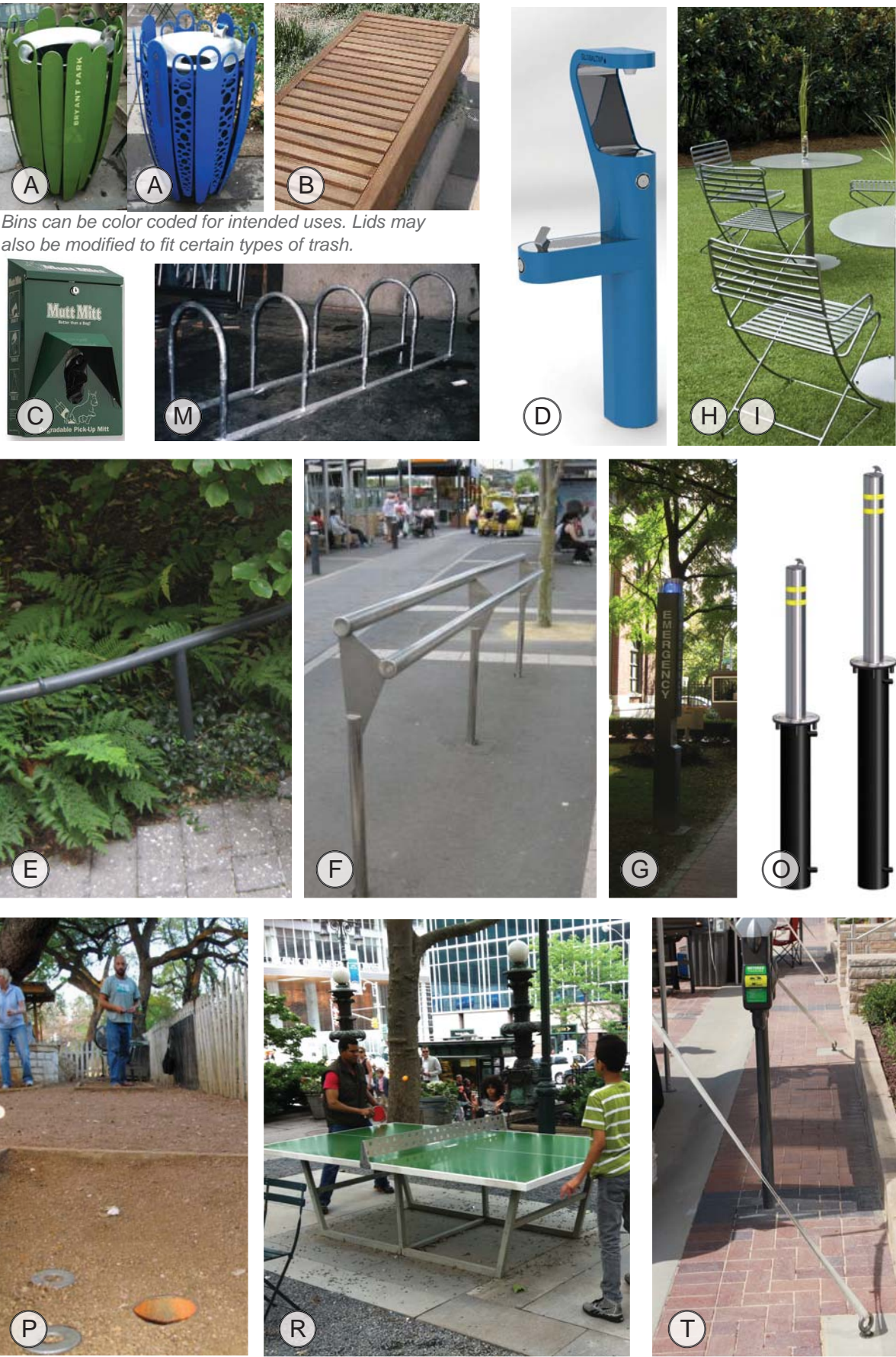
Q: Court Bumpers- 4” x 4” x 10’ timber poles should be stored in the game area to provide back bumpers for games. These will be located outside of primary pedestrian circulation routes

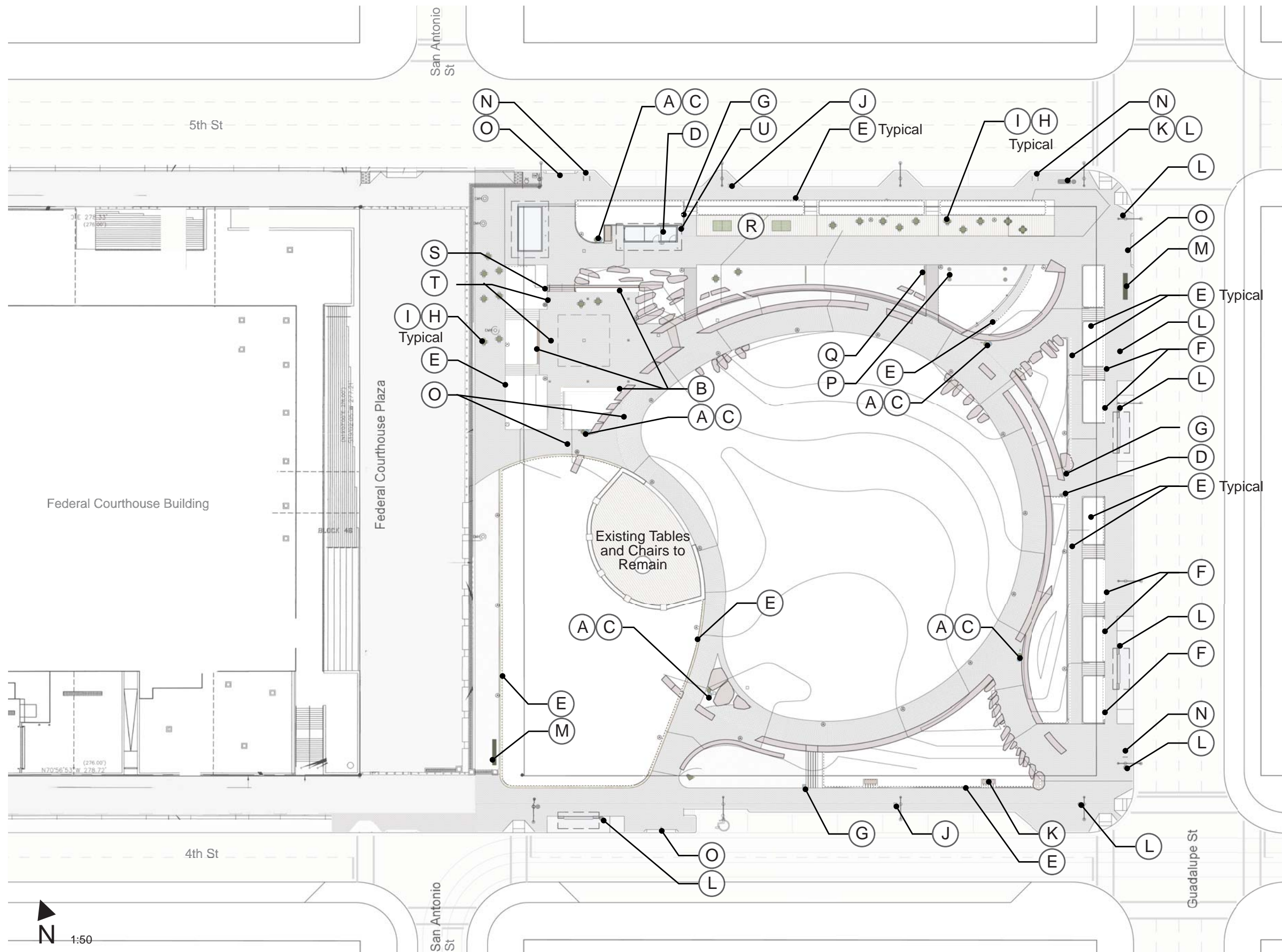
R: Ping Pong Table: Exterior ping pong tables should be durable, and easily surface mounted.

S: Hand Rail- All rails should be painted black and constructed of simple tube and flat bar material.

T: Tent Ties- Threaded sleeves should be installed in paving areas for easy installation of eye-bolt anchors used for larger event tents.

U: Donor Bench- Existing bench dedicated to Charlie McCabe to be relocated near support building.





Furniture and Fixtures Plan

Legend

- A: Garbage and Recycling
- B: Bench Seat
- C: Dog Waste Bag Dispenser
- D: Water Fountain and Bottle Filling Station
- E: Tube Steel Rail
- F: Leaning Rail
- G: Police Call Box
- H: Park Table
- I: Park Chair
- J: Parking Meter
- K: Bench
- L: Trash Can
- M: Bike Corral
- N: Bike Racks
- O: Removable Bollard
- P: Washer Pits
- Q: Court Bumpers
- R: Ping Pong Table
- S: Hand Rail
- T: Tent Ties
- U: Donor Bench (Charlie McCabe)

95%

Percent of frontage with open views into the park; Baseline is 95%

24

Number of spaces provided for bicycle parking; Baseline is 12.

25' - 44'

Distance of pedestrian crossing at intersections; Baseline is 60'

Signage, Wayfinding and Interpretive Elements

Much like other ingredients of the Park, city-wide efforts to make improvements downtown must be looked at in concert with park-specific improvements. Many of city-wide efforts are good for the overall user experience of downtown (getting to the Park, parking, other attractions, events, etc.) but may also dilute the distinct brand that Republic Square is trying to create when applied at the park-scale.

Another layer of the Park is that of storytelling. Users should have access to information about the Park’s role in the city’s history, as well as its relevance to the Mexican-American community.

A: 5th St Mexican-American Heritage Corridor Node- As a former anchor of the Mexican-American community in Austin, Republic Square is a logical node for a comprehensive 5th St Mexican-American Heritage Corridor through the city. The Downtown Austin Wayfinding Program (DAWP) has identified such a project as a possible pilot project, and may be a funding/development partner for this effort. A suggested topic related to Republic Square might be it’s earlier title of “Mexican Park” and its former proximity to Our Lady of Guadalupe Catholic Church. This feature should occur at the northeast corner of the Park, the closest location to the former church site, and would provide a meaningful anchor/sense of arrival to that corner of the Park. PARD should have the ability to review designs for such a feature and the design should respect nearby tree canopy, root zones, and park access for both pedestrians and loading. This experience would be an ideal application for a QR code that allows users to download an audio tour to their mobile phones.

B: Auction Oaks Information- Interpretive panels outlining the history of the Auction Oaks, as well as the biological characteristics of native Live Oaks should be carefully located on at least two sides of the trees. One location should be

along 4th St. These should be colorful signs that include a graphic timeline of events with interest for both adults and children. Dense amounts of text should be limited.

C: Park Background and Management Information- Information about the origin of the park as a public space should be clearly described, including the critical roles of PARD, Sierra Club and the Lion’s Club of Austin in the Park’s preservation and beautification. Building on this, information about any conservancy, friends group, or other local management organization should be included along with a QR code to access more detailed information. This feature may also have a QR code to download a larger heritage-site tour that is relevant to all of Austin.

D: Park Entry Sign- Naming signage for the park should read “Republic Square” in a dominant font. The graphic may also include a small Texas star to represent it’s significance at the State level. These signs should be carved into a somewhat flat face of a large granite boulder, and should be set at least 18” from ground level.

E. CapMetro Signage Program- Signage related to schedules, route information and rider safety can be mounted within a specific bus platform or shelter but should not be mounted along other parts of the streetscape. It must be located in specific proximity to CapMetro structures.

F: Water Use Information- Information outlining the Park’s water source and technologies should be located in a visible location near the lawn. The general public should be informed of sustainable practices related to water, particularly in a climate that experiences periodic drought.

G: Kiosk Parking Regulatory- The kiosk will need a designated amount of loading area. This area will need to be signed within the closest set of parking stalls along 5th St and should also be

limited to 15 minutes at all times to support kiosk sales and overall function.

H: Park Rules- A comprehensive set of park rules should be set in key locations around the Park. This may include specific PARD rules, but can also be expanded to include rules that support the efforts of a future conservancy or management organization.

I: Banner Program- Banner arms should be included at all pole light locations around the perimeter of the Park. These locations should be reserved for the use of Park management to advertise events (movies, food and wine events, etc.) or participate in city-wide banner program events (SXSW, Independence Day, etc.). All banner arms shall include a run of stainless steel wire along the top arm to keep birds from perching on those surfaces.

J: Parking Pay Station- This should be installed and signed per City standards. Locations should be adjacent to pole lights or other obstructions, and should not block or clutter walkways.

K: Downtown Austin Wayfinding Program (DAWP) Pedestrian Directional- A cluster of pedestrian directional signs should be located the corner of both 5th St and 4th St. The 5th St location should reference the Park, ATM, restaurant, bathroom and 5th St Mexican-American Heritage Corridor. The 4th St location should reference the Park, ATM, and restaurant.

L: DAWP Bike Parking Icon- Bike parking icons should direct people to both the northeast corner of the Park and the southwest corner of the Park.

M: DAWP Urbanflow or Media Kiosk- The DAWP includes a few multi-media options for information and wayfinding. Since the Park will host the last southbound stop for CapMetro Rapid in downtown, this is a logical place to provide a dynamic information center. It should be situated somewhere along Guadalupe St.

N: Game Court Rules- A sign outlining the basic rules of games such as washers and bocce should be located near game courts for reference. General Park rules and regulations associated with games may also be included (i.e. reservation requirements, organized events, etc).

O: Community Board- The Park has tremendous community relevance in the downtown area, and should have some place for community members to post bills, messages or other materials in support of this.

P: Valet Parking Regulatory- If a Park-affiliated valet is included as part of the revenue plan, it will require signage that secures required spaces during valet operational times.

Other signage elements:

- Plant ID tags- Small plant identification tags may be included in parts of the Park with distinctive or notable vegetation. These tags should be constructed of metal, and text should be engraved.
- Building/architectural signage- Signage for the kiosk operator, bathrooms, fire/ emergency information, and other items should be consistent with the overall signage character for the Park. They should be submitted with building plans.
- Public Works regulatory (street signs, no parking, etc.)- Sign locations should be clustered and focused on reducing conflicts in paving areas. Some attention of the district themes and naming proposed as part of the DAWP should be incorporated as well. Republic Square should be prominently featured in this effort (i.e. distinct logo or graphic as part of DPW signage).



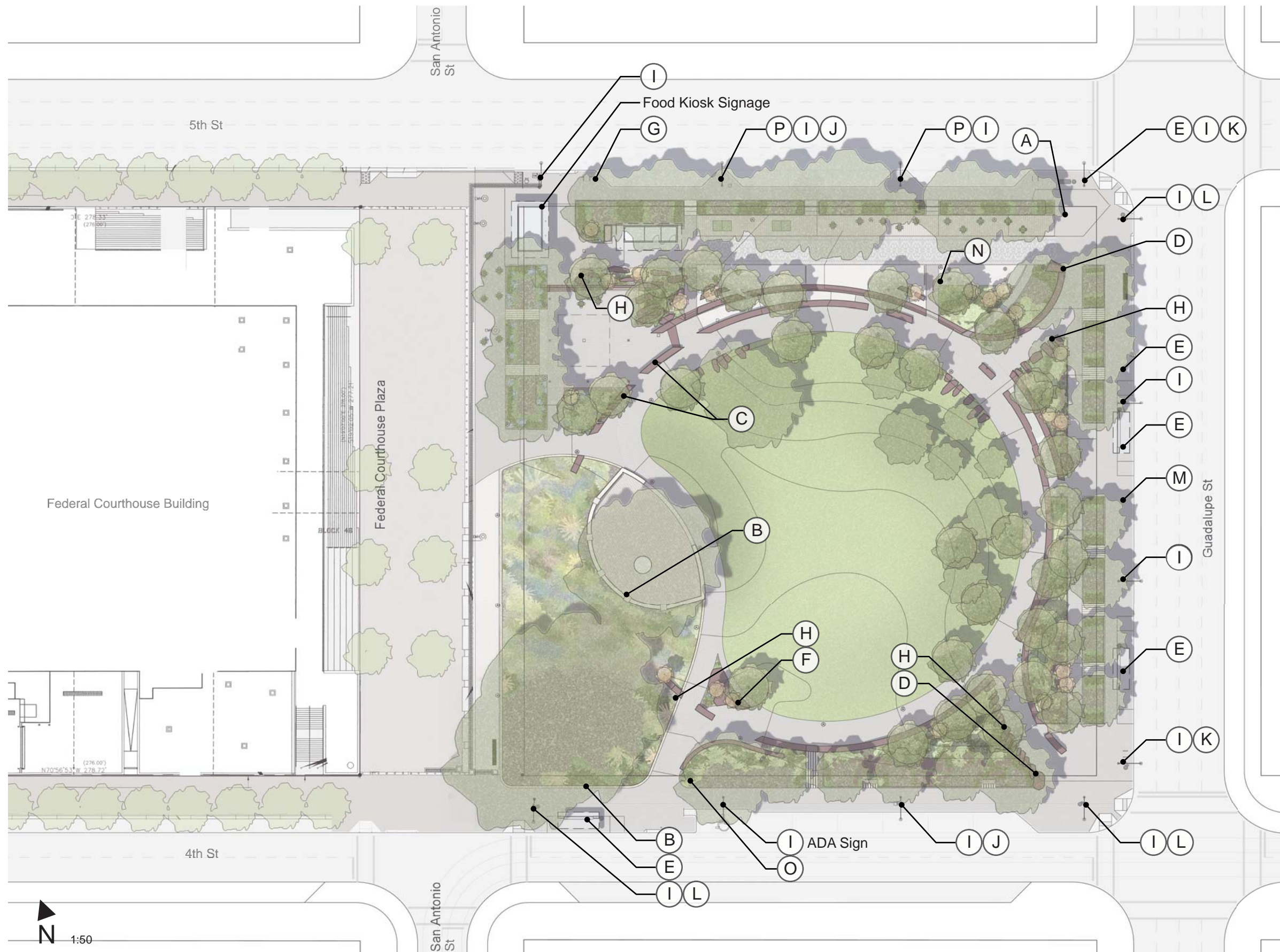
C, D- Granite has a distinctly permanent and timeless feel as a canvas for signage or information.



H, N- Regulatory graphics within the park should be clean, consistent, durable and graffiti resistant.



B, F- Graphic-intensive signage and diagrams are an engaging way to display environmental stories.



Signage, Wayfinding and Interpretive Elements Plan

Legend

- A: 5th St Mexican-American Heritage Corridor Oral History Sign
- B: Auction Oaks Information
- C: Park Background and Management Information
- D: Park Entry Sign
- E: CapMetro Signage Program
- F: Water Use Information
- G: Kiosk Parking Regulatory
- H: Park Rules
- I: Banner Program
- J: Parking Pay Station
- K: Downtown Austin Wayfinding Program (DAWP) Pedestrian Directional
- L: DAWP Bike Parking Icon
- M: DAWP Urbanflow or Media Kiosk
- N: Game Court Rules
- O: Community Board
- P: Valet Parking Regulatory



Text could be inscribed in the granite seat wall around the arc promenade.