



City of Austin Phase 1 Watershed Protection Ordinance (WPO) Overview

Planning Commission: Codes & Ordinances
June 18, 2013

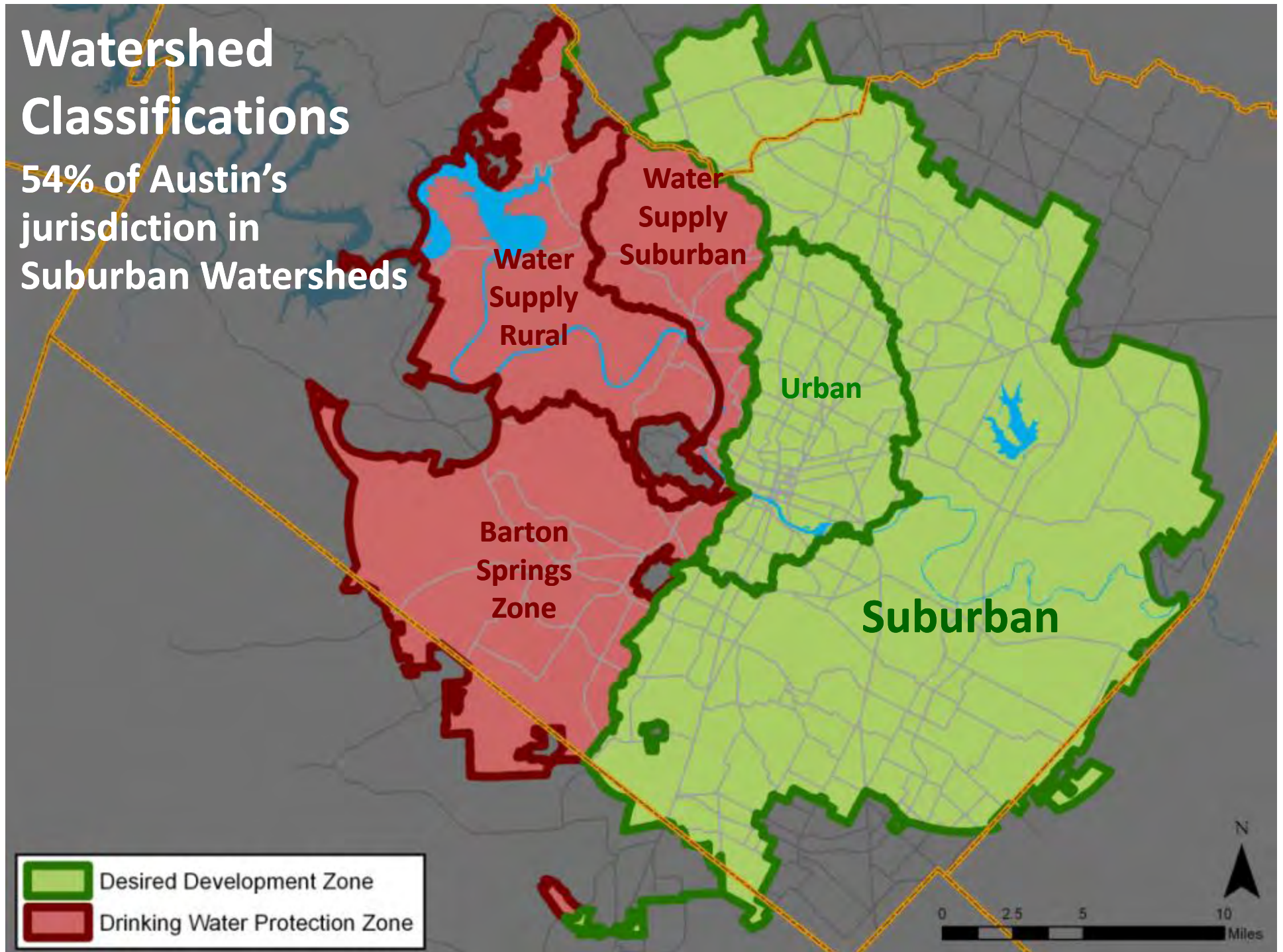
Presentation Overview

- **Austin's Creeks & Watershed Concerns**
- **Council Directive for WPO**
- **WPO Highlights**
- **Coordination with Imagine Austin**
- **Schedule/Next Steps**
- **Questions**

WPO = Watershed Protection Ordinance

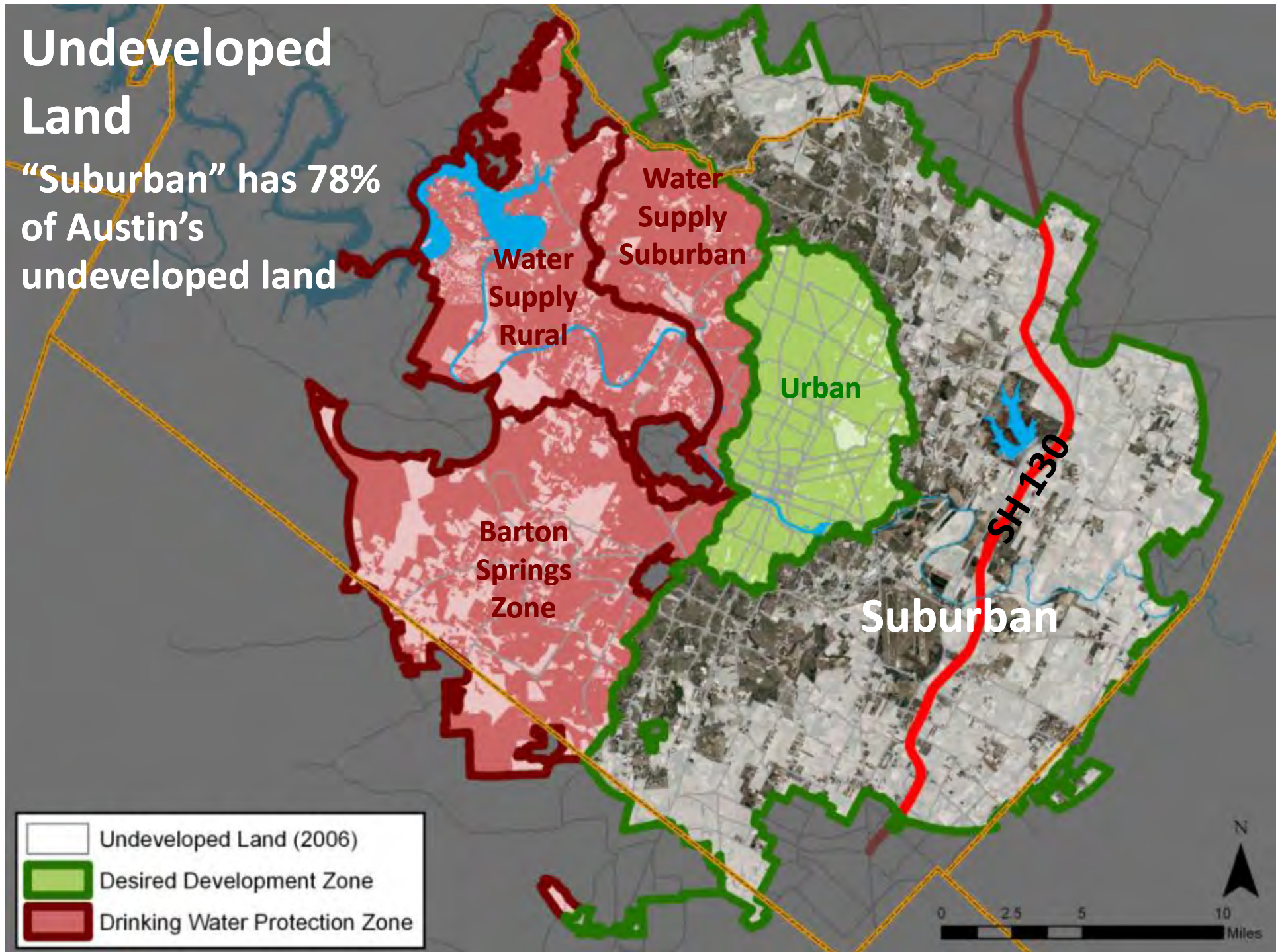
Watershed Classifications

54% of Austin's jurisdiction in Suburban Watersheds



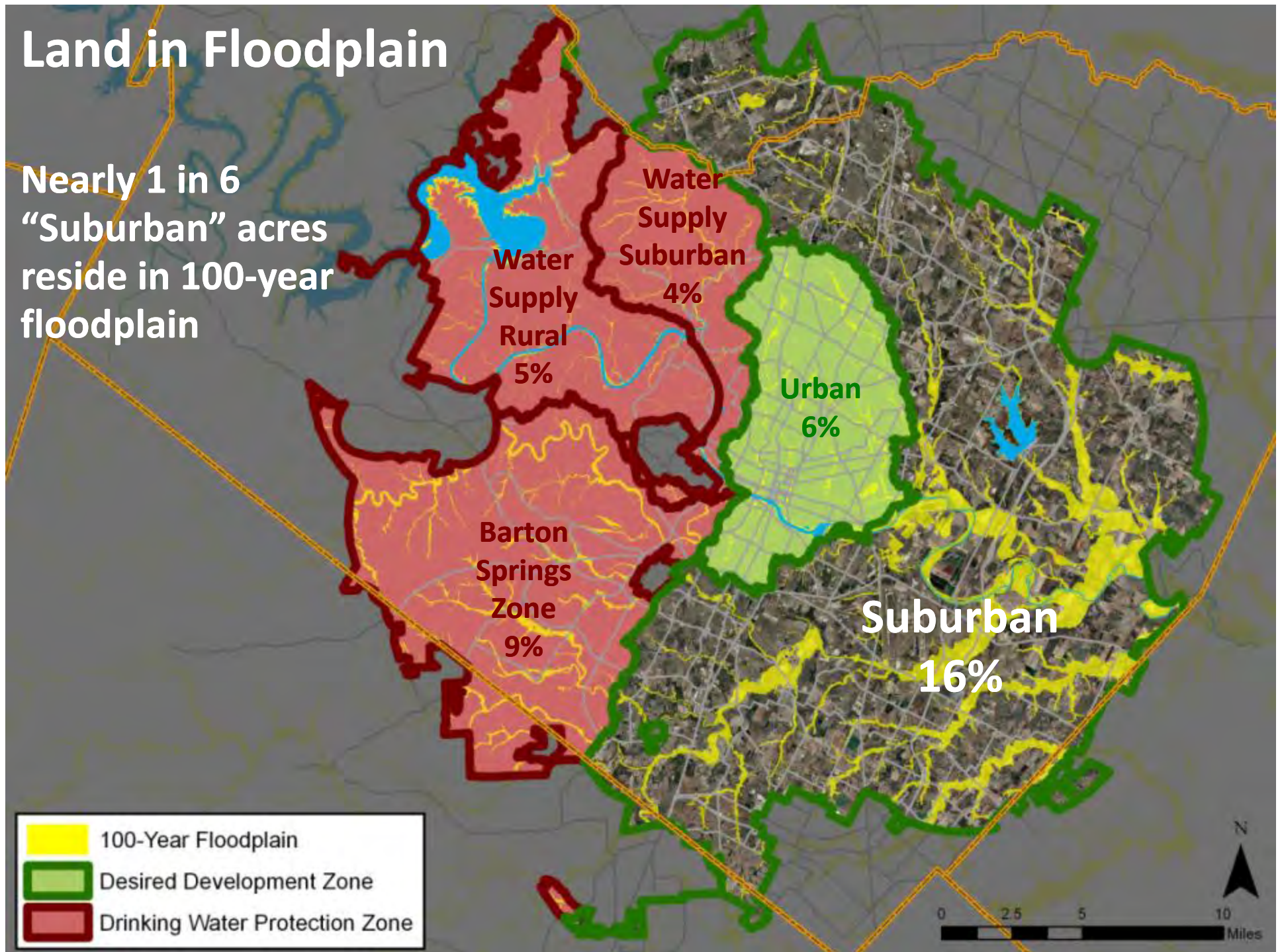
Undeveloped Land

“Suburban” has 78% of Austin’s undeveloped land



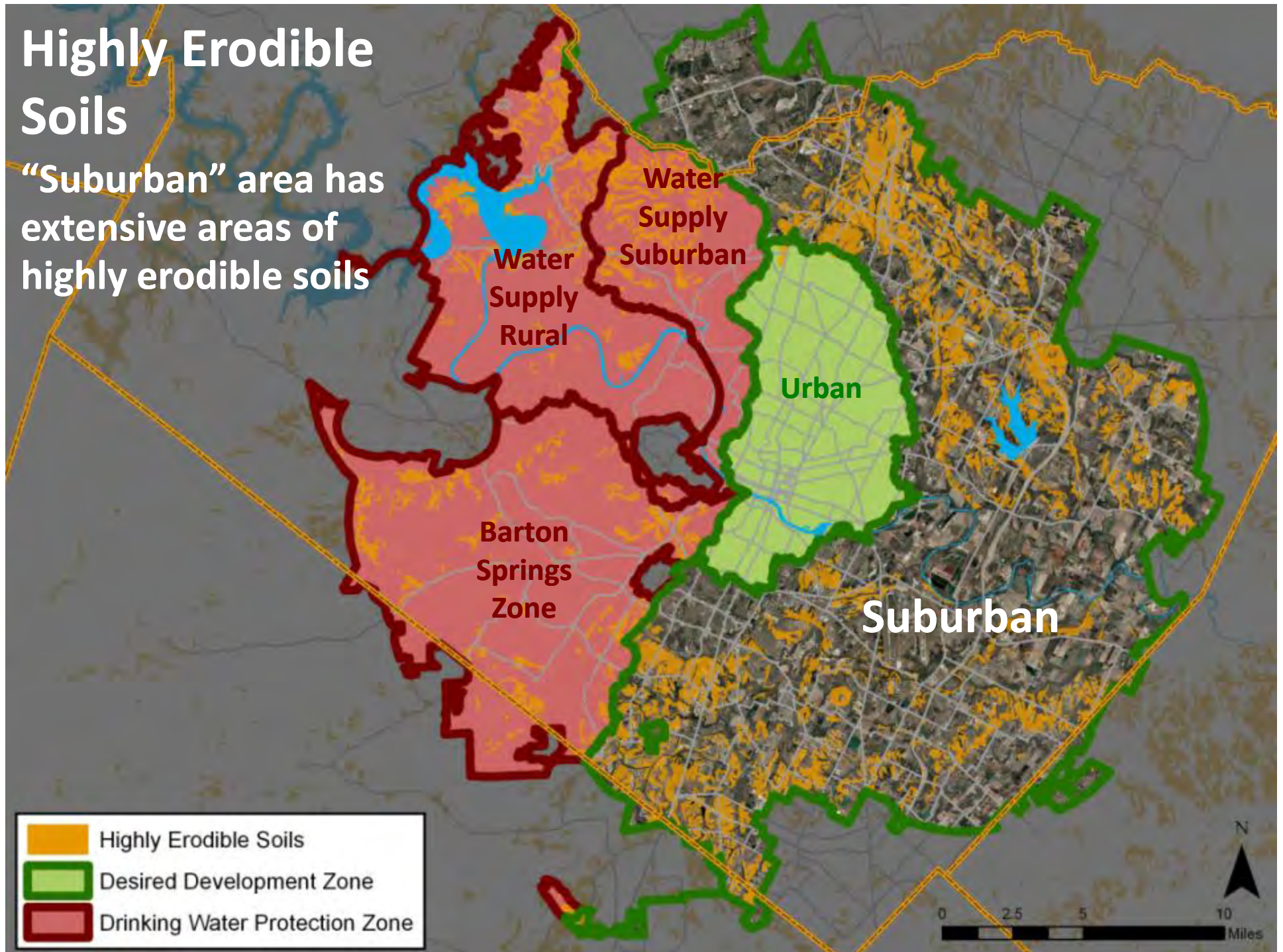
Land in Floodplain

Nearly 1 in 6
“Suburban” acres
reside in 100-year
floodplain



Highly Erodible Soils

“Suburban” area has extensive areas of highly erodible soils

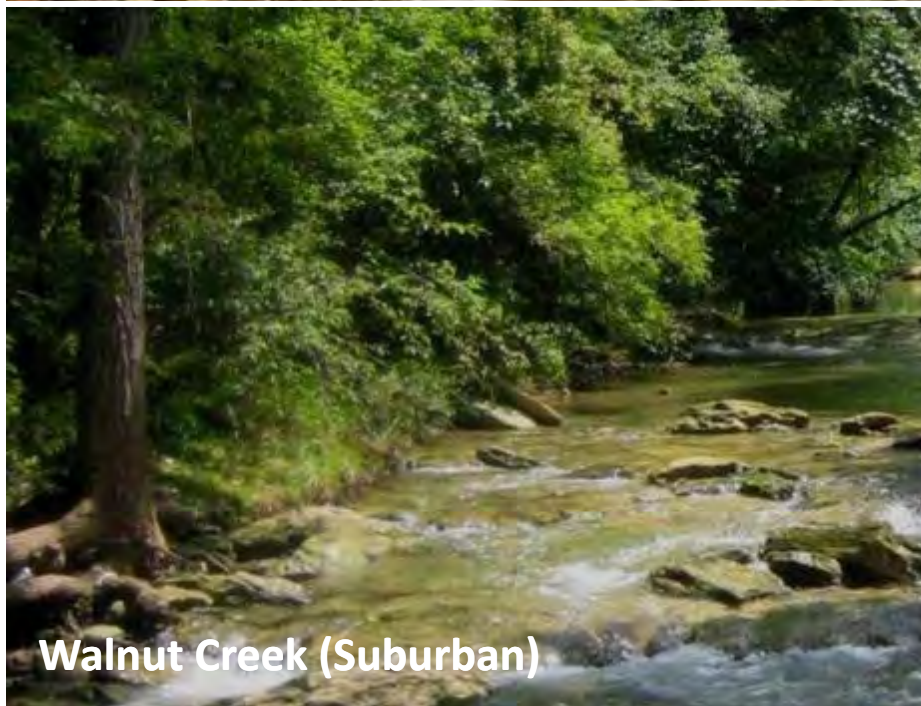


Edwards Plateau Streams

Turkey Creek (WS Rural)



Barton Creek (BSZ)



Walnut Creek (Suburban)



Bull Creek (WS Suburban)

Blackland Prairie Streams

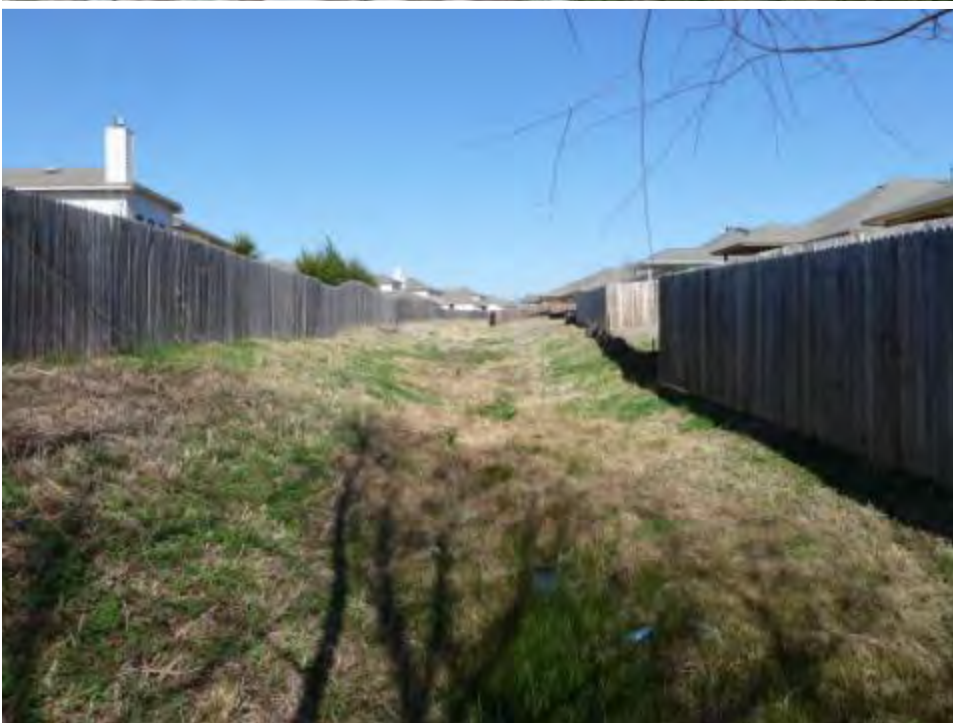
Gilleland Trib (Suburban)

Cedar Creek (Suburban)

Wilbarger Trib (Suburban)

Wilbarger Main (Suburban)

Headwaters Creeks in Austin's Eastern Edge



Headwaters Creeks in Austin's Eastern Edge



Wastewater Collection System Problems



Boggy Creek



Urbanization: Channel Erosion & Repair



Key Themes Inspiring Council Action

- **Importance of protecting riparian areas & floodplains**
- **Lessons learned in Austin & beyond: need best science**
- **Prevention is affordable; repairs are not**
- **Simplicity and complexity**
- **A sustainable future: green infrastructure; compact development; connectivity; health; water**
- **Balance environmental protection & development opportunity**

Council Resolution

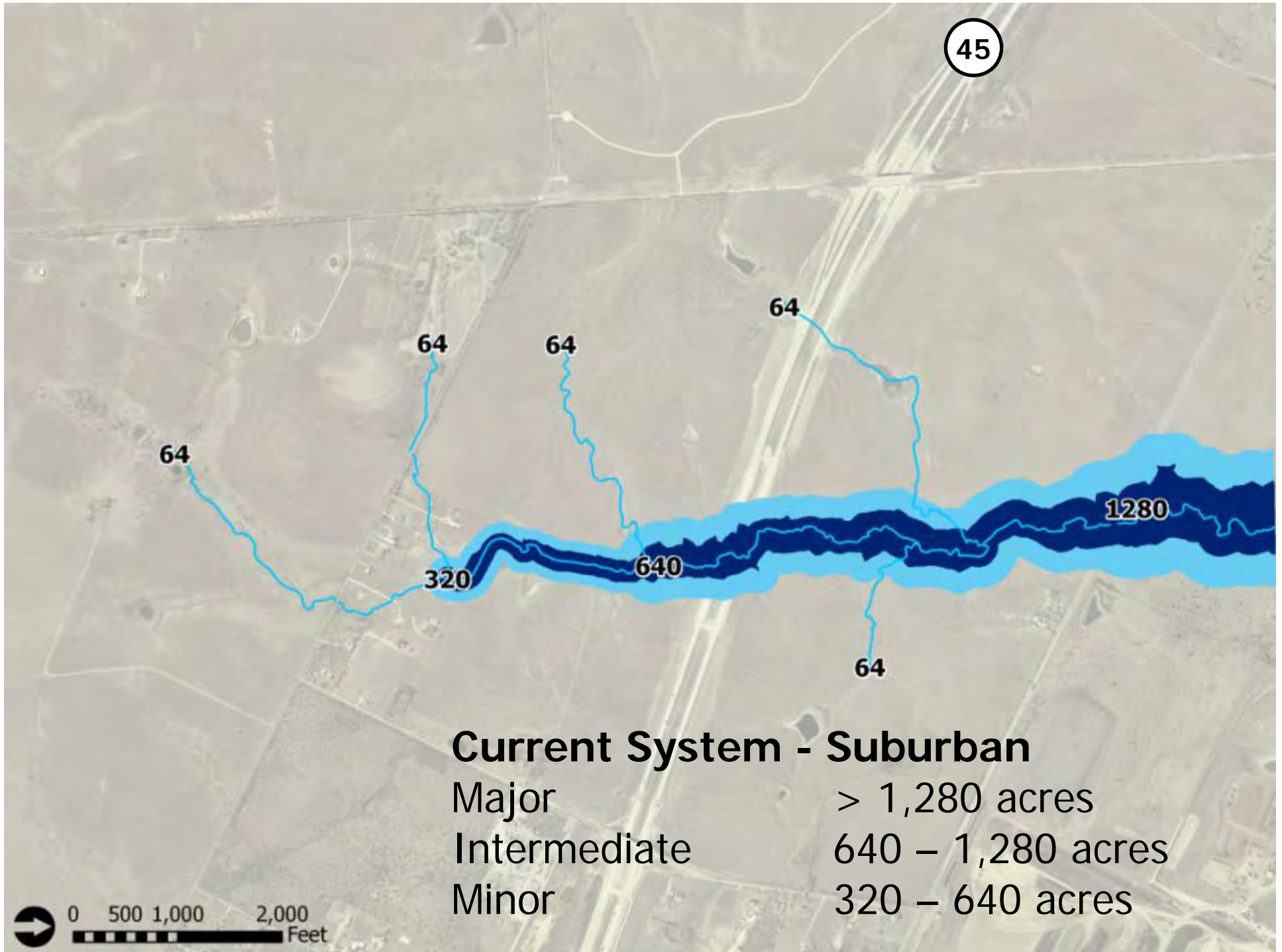
- 1. Creek Protection**
- 2. Floodplain Protection**
- 3. Development Patterns & Greenways**
- 4. Improved Stormwater Controls**
- 5. Mitigation Options**
- 6. Simplify Regulations & Maintain Opportunity**
- 7. Coordinate with Regional Partners**

([Resolution #20110113-038](#))

Creek Protection

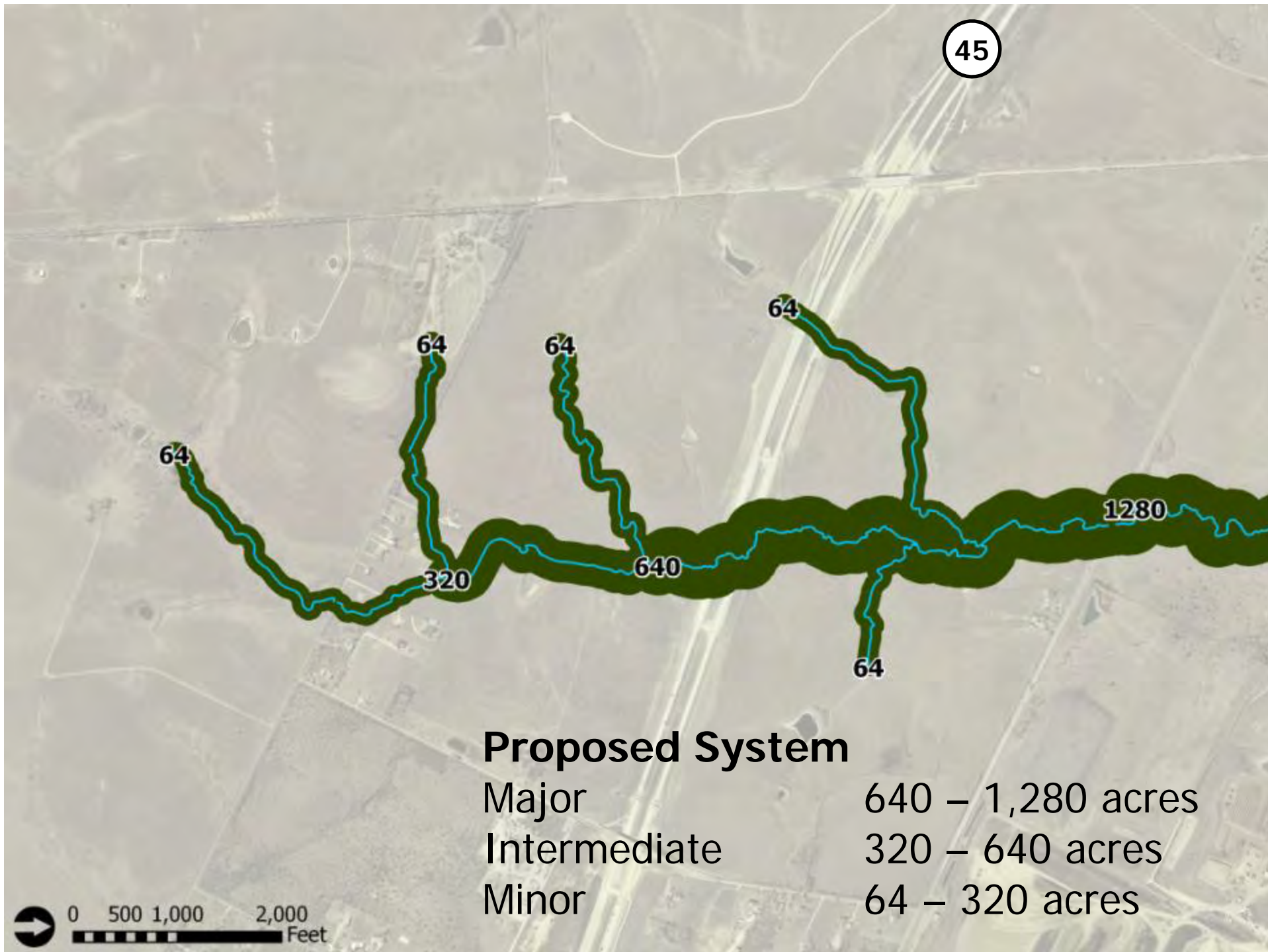
"Improve stream buffer requirements, including critical headwater areas, to protect water quality and reduce erosion, flooding, and long-range costs for infrastructure maintenance."

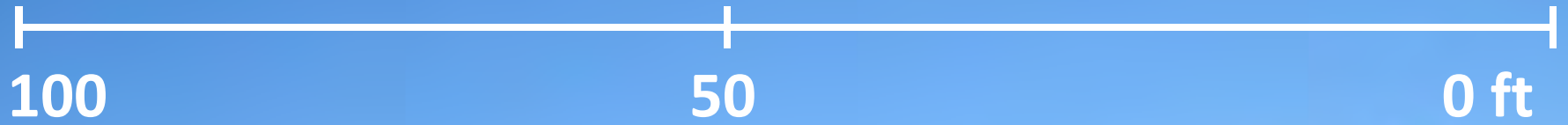




Current System - Suburban

Major	> 1,280 acres
Intermediate	640 – 1,280 acres
Minor	320 – 640 acres





Proposed Buffers

Centerline