

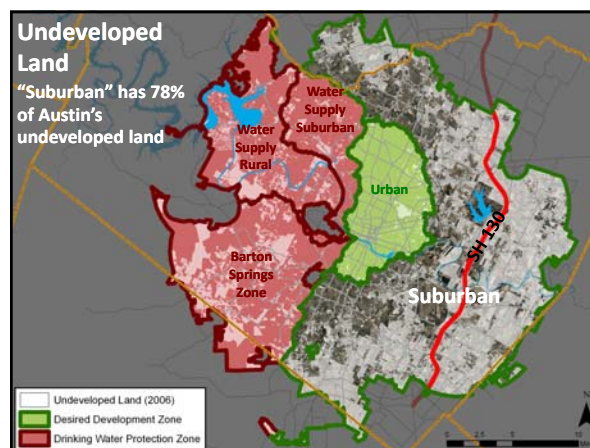
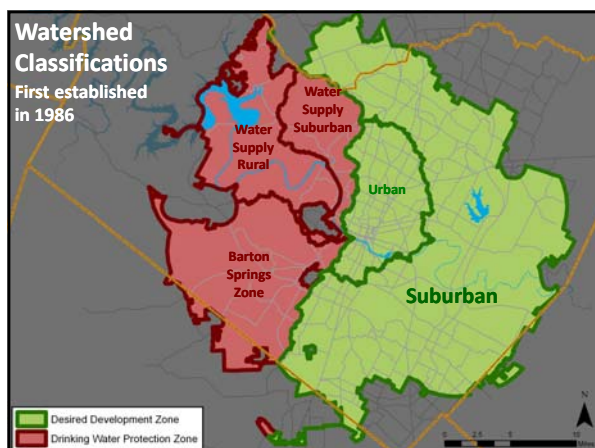
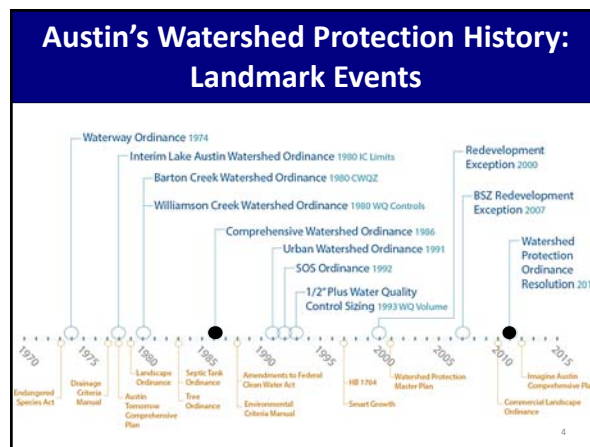


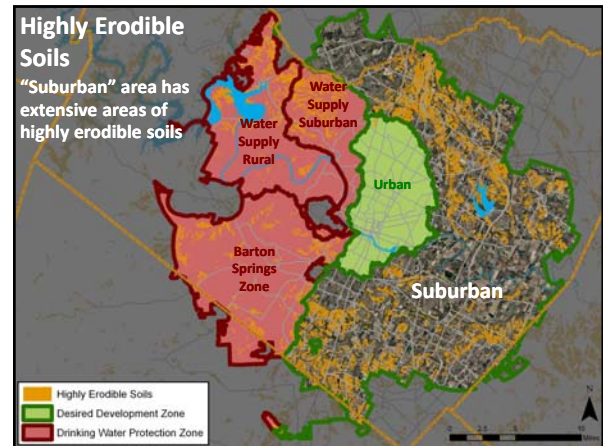
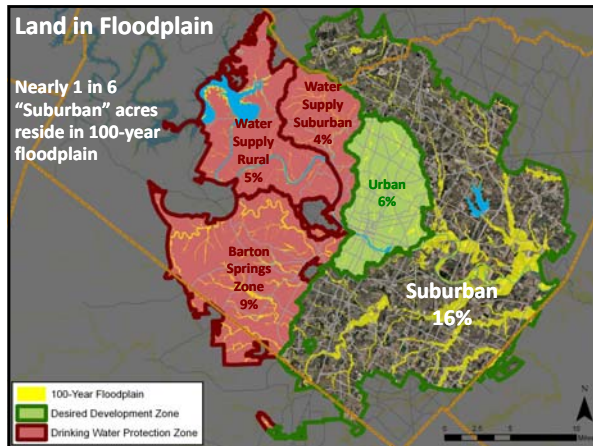
Purpose

- Act now in a rapidly growing city → Council Directive
- Provide superior protection for creeks & watersheds citywide
- Incorporate 30 years of lessons learned
- Stop creating problems faster than we can fix them
- Design and build a sustainable future: Imagine Austin
 - Sustainable water resources
 - Green infrastructure
 - Compact development
 - Connectivity

WPO Timeline

Env. Board Subcommittee	Sep. 2009 – Nov. 2010
Env. Board Resolution	Nov. 2010
Council Resolution	Jan. 2011
Stakeholder Meetings: Input	Sep. 2011 – April 2012
Staff develops Draft Ordinance	April – Nov. 2012
Stakeholder Meetings: Ordinance	Dec. 2012 – June 2013
Environmental Board	July 17
Planning Commission	Aug. 27
City Council	Sep. 26, Oct. 3
Travis County Commissioner's Court (Title 30)	Fall/Winter





Council Resolution

1. Creek Protection
2. Floodplain Protection
3. Development Patterns & Greenways
4. Improved Stormwater Controls
5. Mitigation Options
6. Simplify Regulations & Maintain Opportunity
7. Coordinate with Regional Partners

(Resolution #20110113-038)

Creek Protection

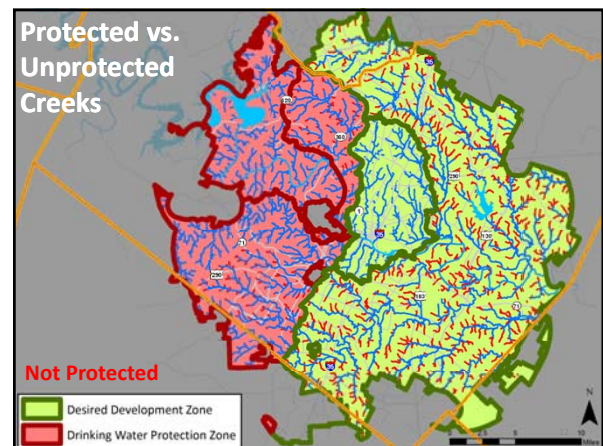
"Improve stream buffer requirements, including critical headwater areas, to protect water quality and reduce erosion, flooding, and long-range costs for infrastructure maintenance."

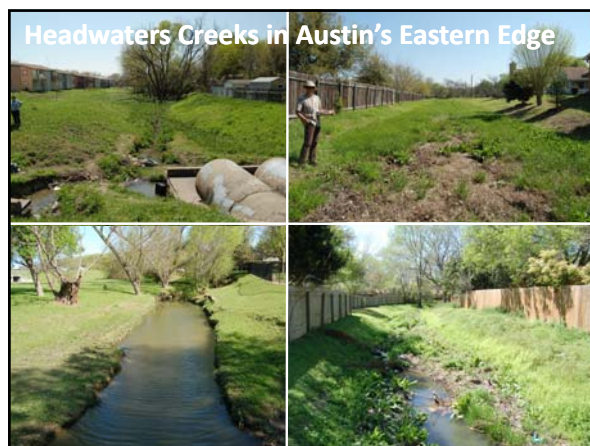


Benefits of Healthy Creek Corridors

- Helps control flood impacts
- Reduces channel erosion & property loss
- Helps maintain good water quality
- Reduces operation & maintenance costs
- Provides multiple community benefits

11





Creek Protection: Ordinance Proposal

- Extend minor **“headwaters” stream buffers** to 64 acres of drainage citywide
- To **offset impacts in Suburban Watersheds**:
 - Eliminate **Water Quality Transition Zone (WQTZ)**
 - Use **Gross Site Area** basis for impervious cover (instead of net site area)
 - Allow **“buffer averaging”** to reduce the width of buffers by up to one-half if the overall amount of area protected remains the same

16

