



**City of Austin
Phase 1
Watershed Protection Ordinance (WPO)
Overview**

**Environmental Board
June 19, 2013**

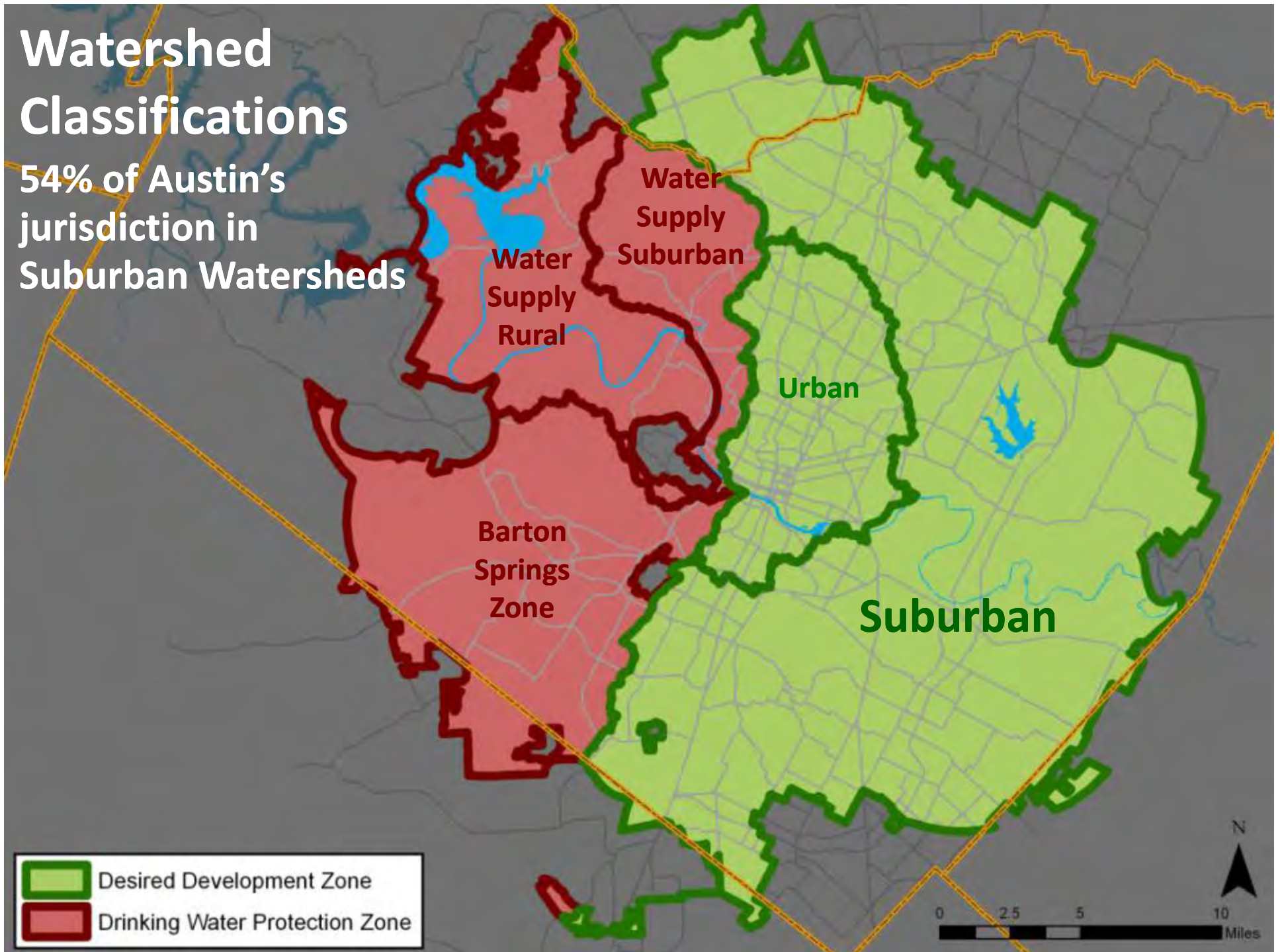
Presentation Overview

- **Austin's Creeks & Watershed Concerns**
- **Council Directive for WPO**
- **WPO Highlights**
- **Coordination with Imagine Austin**
- **Schedule/Next Steps**
- **Questions**

WPO = Watershed Protection Ordinance

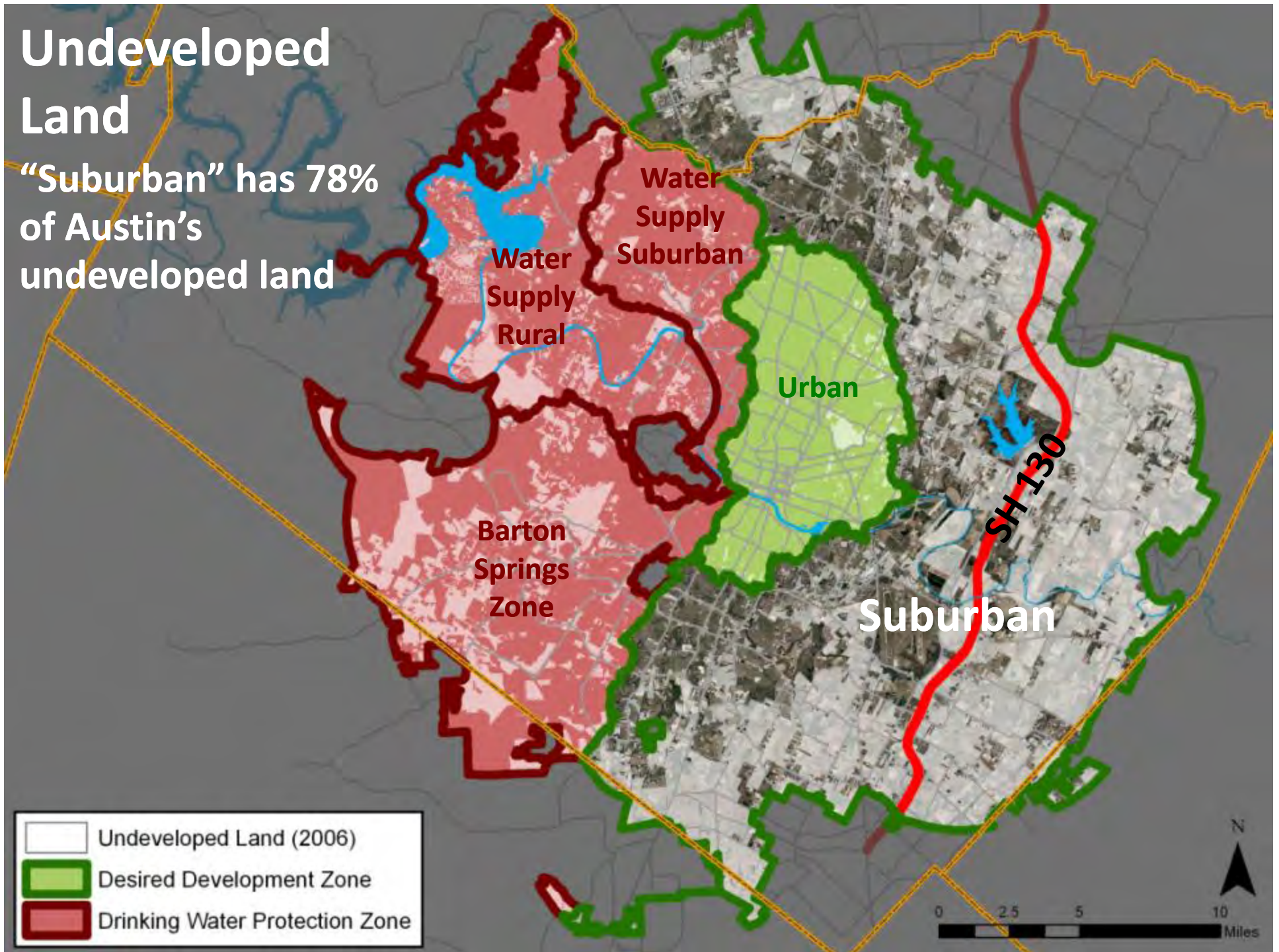
Watershed Classifications

54% of Austin's jurisdiction in Suburban Watersheds



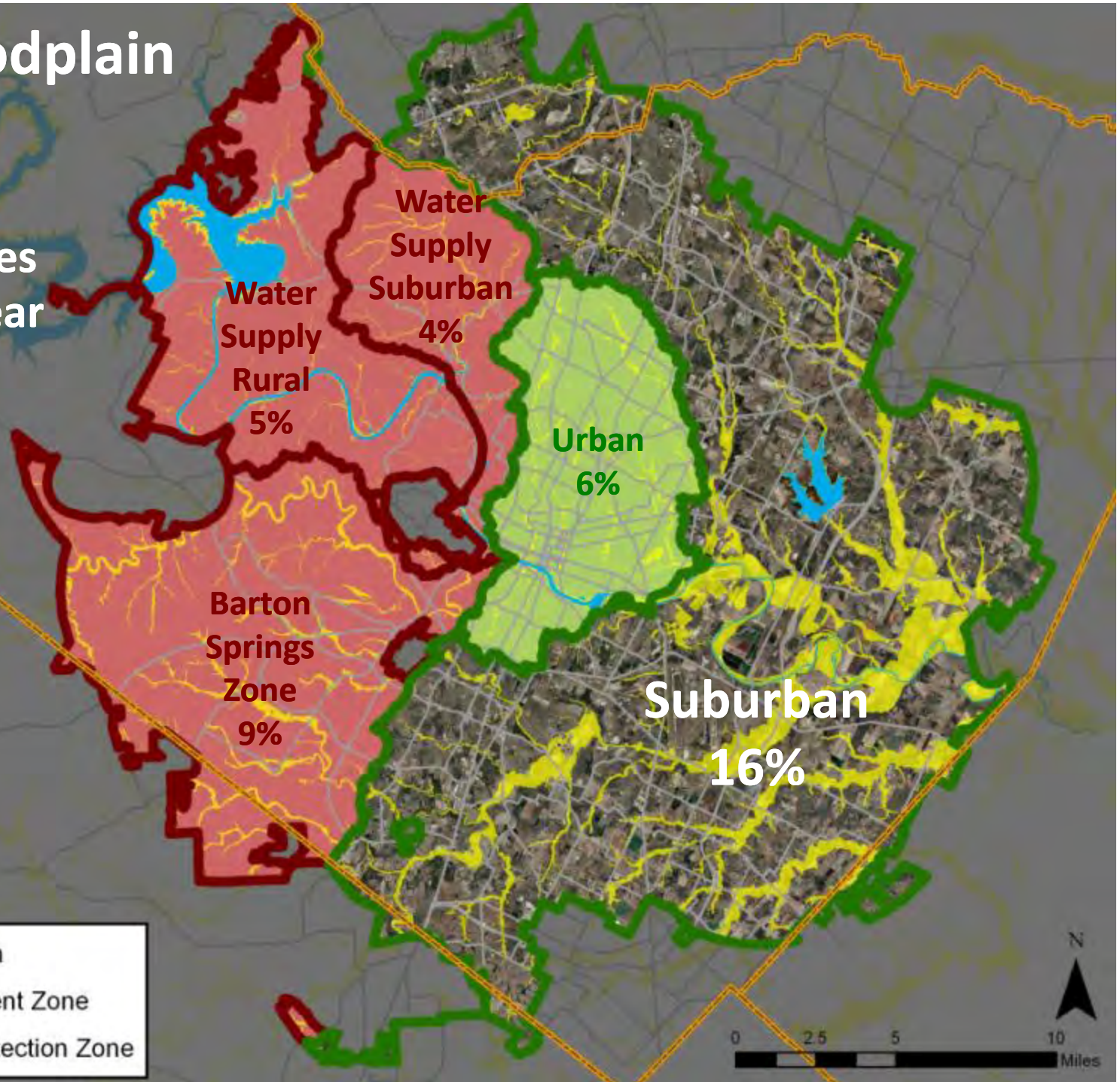
Undeveloped Land

“Suburban” has 78% of Austin’s undeveloped land



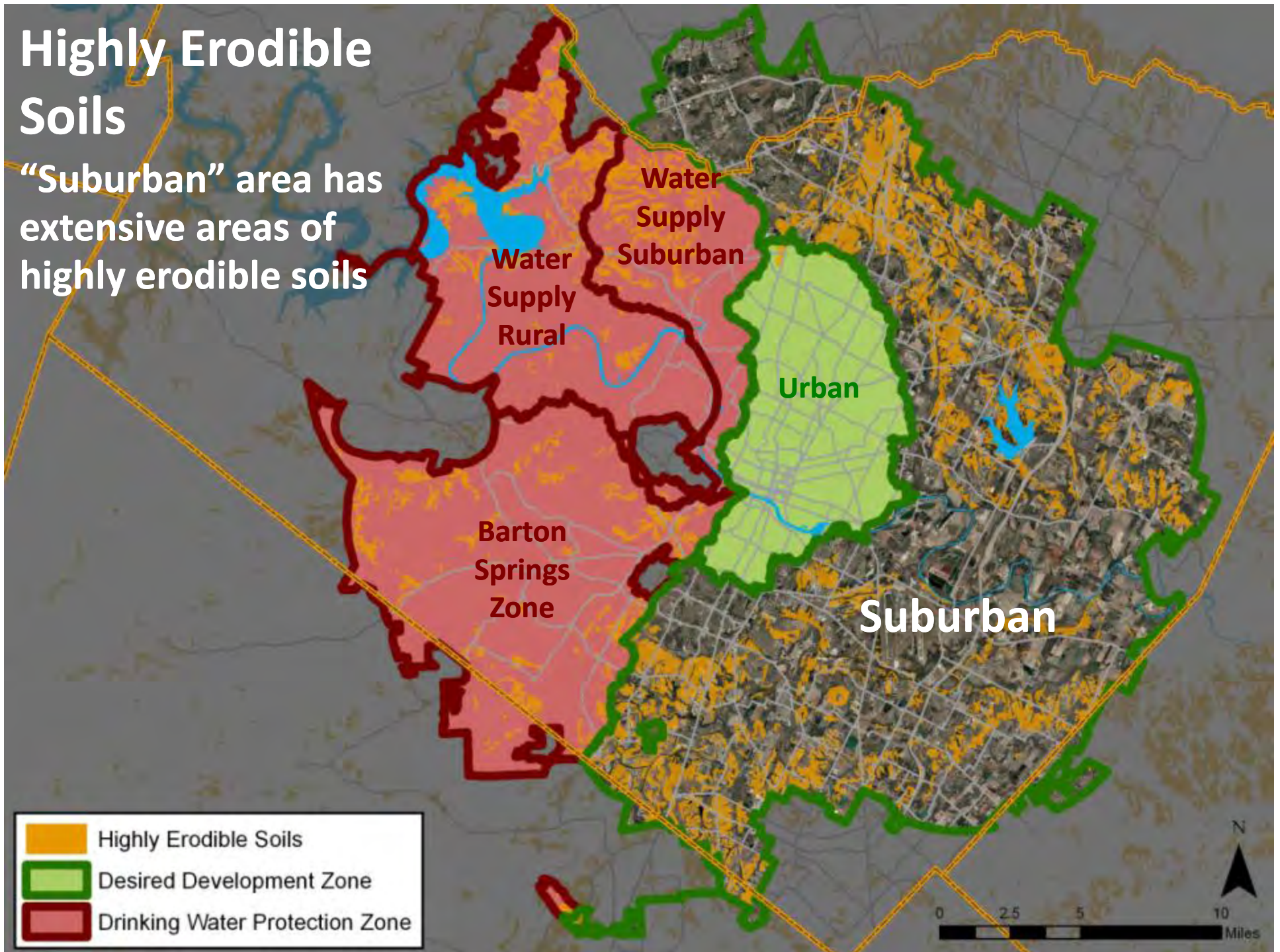
Land in Floodplain

Nearly 1 in 6
"Suburban" acres
reside in 100-year
floodplain



Highly Erodible Soils

“Suburban” area has extensive areas of highly erodible soils

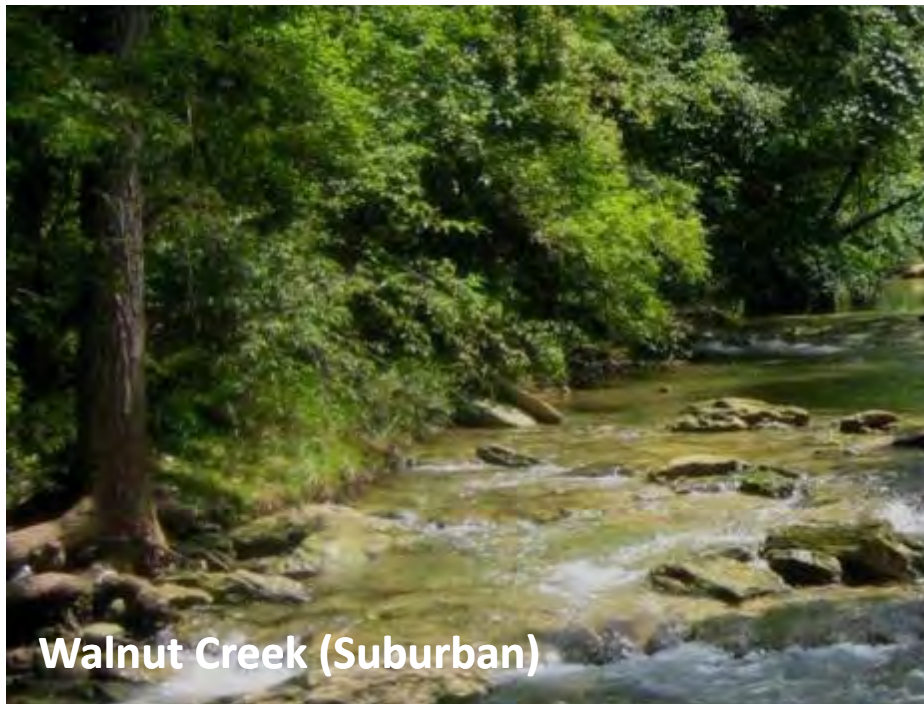


Edwards Plateau Streams

Turkey Creek (WS Rural)



Barton Creek (BSZ)



Walnut Creek (Suburban)



Bull Creek (WS Suburban)

Blackland Prairie Streams

Gilleland Trib (Suburban)

Cedar Creek (Suburban)

Wilbarger Trib (Suburban)

Wilbarger Main (Suburban)

Headwaters Creeks in Austin's Eastern Edge



Headwaters Creeks in Austin's Eastern Edge



Wastewater Collection System Problems



Boggy Creek

Urbanization: Channel Erosion & Repair



Before



After (at ~\$1,000/lin.ft.)



Before



After (at ~\$1,000/lin.ft.)

Key Themes Inspiring Council Action

- **Importance of protecting riparian areas & floodplains**
- **Lessons learned in Austin & beyond: need best science**
- **Prevention is affordable; repairs are not**
- **Simplicity and complexity**
- **A sustainable future: green infrastructure; compact development; connectivity; health; water**
- **Balance environmental protection & development opportunity**

Council Resolution

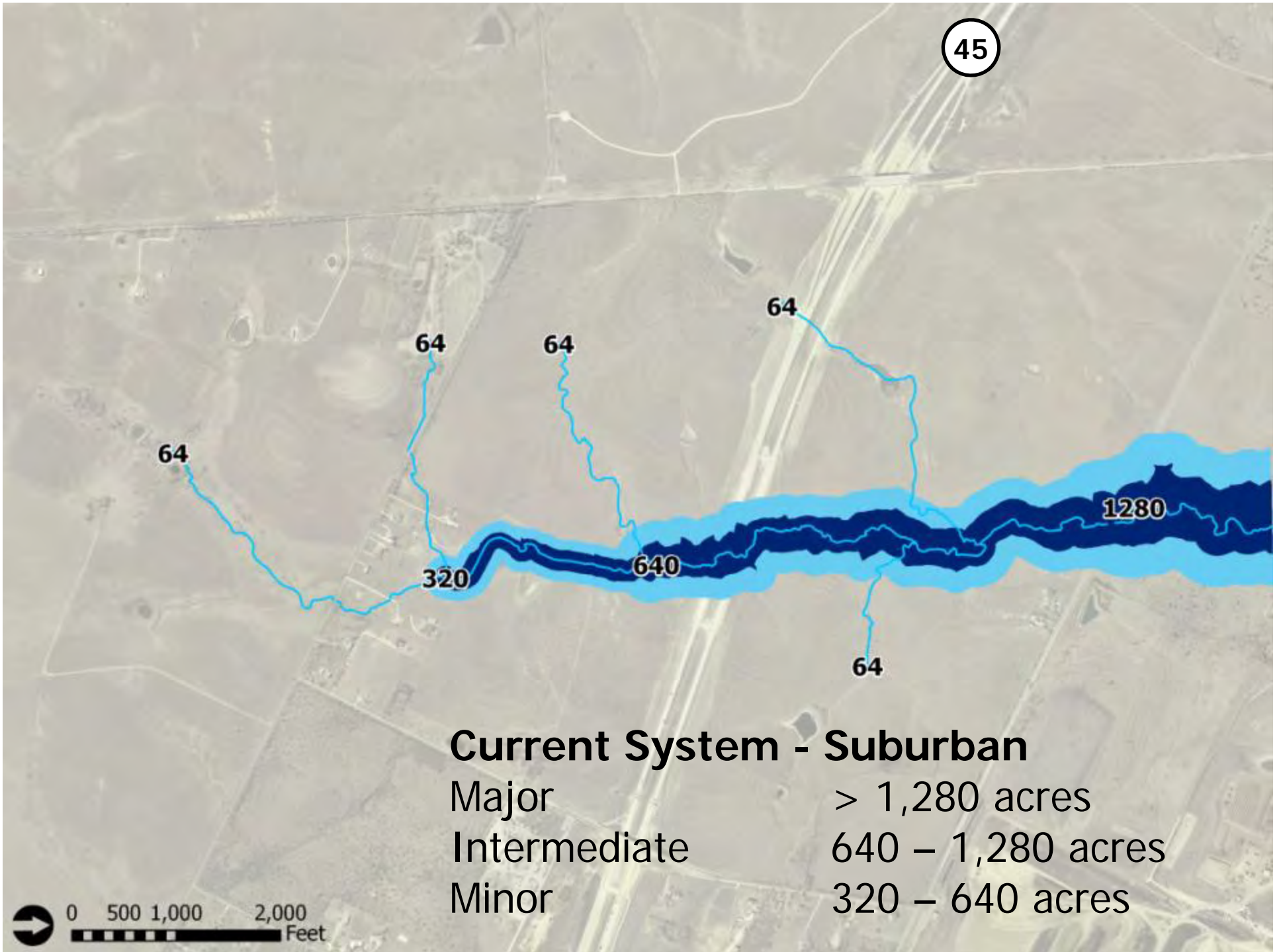
- 1. Creek Protection**
- 2. Floodplain Protection**
- 3. Development Patterns & Greenways**
- 4. Improved Stormwater Controls**
- 5. Mitigation Options**
- 6. Simplify Regulations & Maintain Opportunity**
- 7. Coordinate with Regional Partners**

[\(Resolution #20110113-038\)](#)

Creek Protection

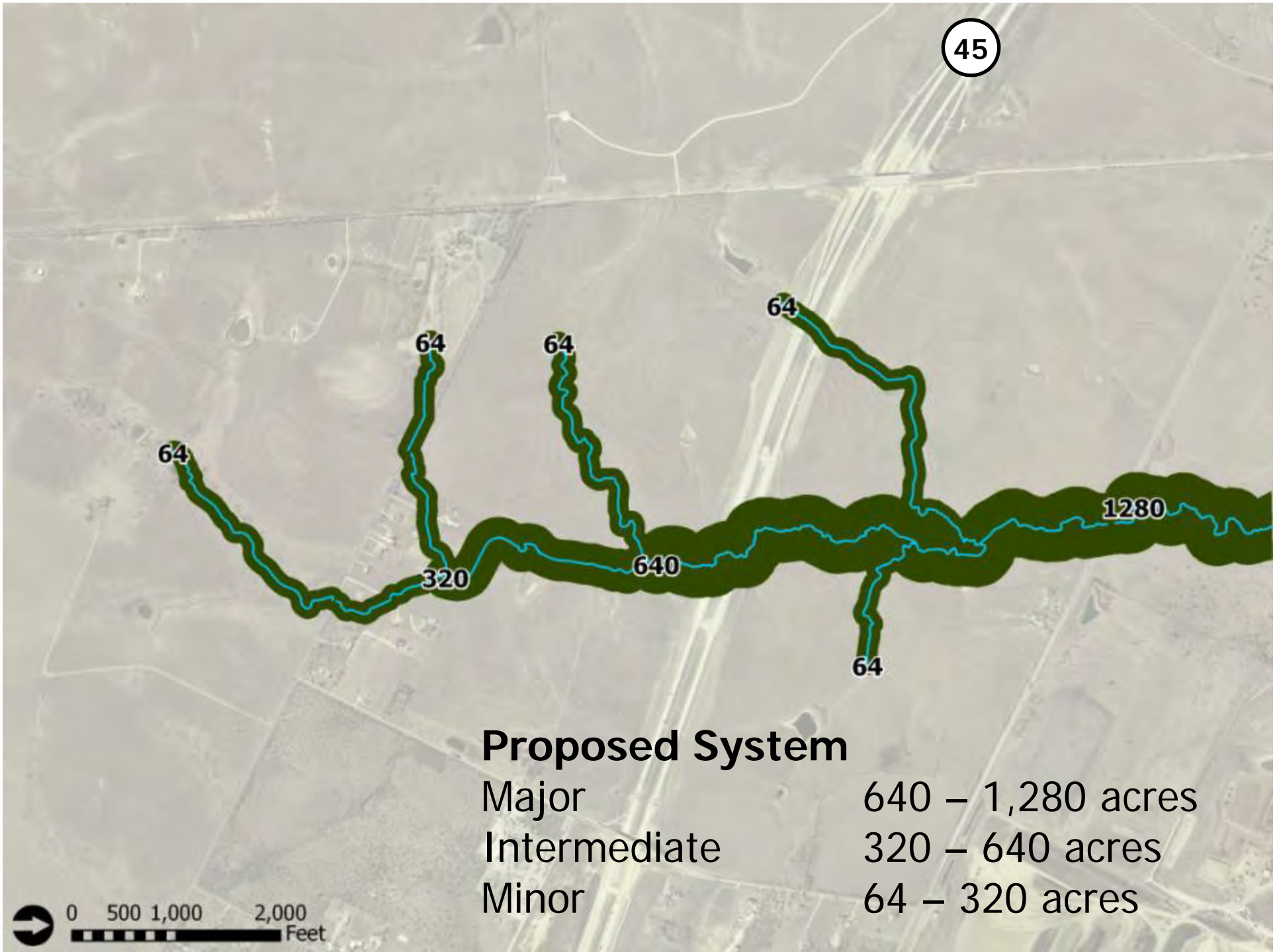
"Improve stream buffer requirements, including critical headwater areas, to protect water quality and reduce erosion, flooding, and long-range costs for infrastructure maintenance."





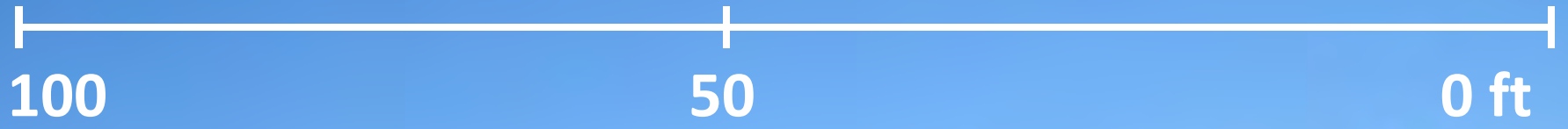
Current System - Suburban

- Major > 1,280 acres
- Intermediate 640 – 1,280 acres
- Minor 320 – 640 acres



Proposed System

Major	640 – 1,280 acres
Intermediate	320 – 640 acres
Minor	64 – 320 acres



Proposed Buffers

Centerline