

## Objectives

- **Maintain existing park uses**
  - Trails, open fields, volleyball, off leash and picnic areas
- **Repair environmental degradation**
  - Stabilize eroding creek banks
  - Protect Heritage Oaks on bank
  - Expand creek corridor vegetation
  - Repair erosion
  - Repair degraded & compacted soils
  - Care for existing trees
  - Plant more trees
  - Increase stormwater infiltration
- **Improve park access.**
  - Accessible entrance at 24<sup>th</sup> street
  - New bike trail on east side
  - New pervious trail from Parkway
  - New pervious trail from Custer's Grove north to Shoal Blvd.

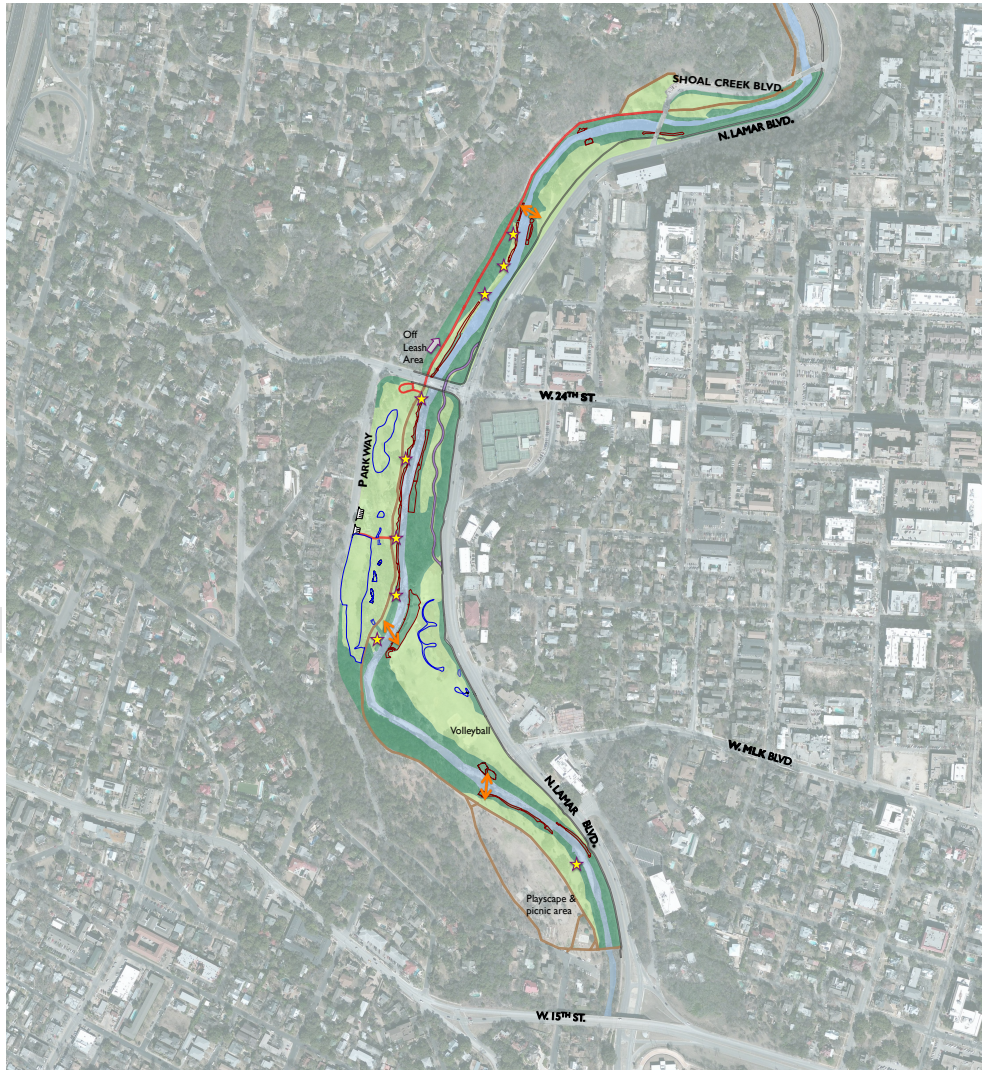
## Park Areas

### Natural Area









Woodlands within the park. Where needed, work will repair compacted soils, repair erosion, and revegetate eroded areas.

### Developed Parkland

Open parkland, usually mowed. Work will include repair of compacted soil under trees and in lawns, and revegetation of eroded areas.



## Legend

-  **Creek Stabilization**  
Limits of creek stabilization work.
-  **Stormwater Runoff Infiltration Area**  
Water quality enhancement feature. Vegetation will be mowed lawns to match the surrounding parkland.
-  **Creek Crossing**  
Developed creek crossings, with stepping stones down to and across the creek on both sides.
-  **Creek Overlook**  
Existing overlooks with picnic tables or seating. Soil decompaction & erosion repair around these uses is proposed.
-  **Hike and Bike Trail**  
Existing multi-use trail.
-  **Proposed Bike Trail**  
Separate bike and pedestrian traffic from Lamar Sidewalk at 24<sup>th</sup> Street.
-  **Improved Trails**  
Existing trail alignment with proposed improved surface, including pervious concrete or accessible ramp.
-  **Shoal Creek**

# shoal creek restoration 15th to 28th streets

## Park Use Integration Plan

