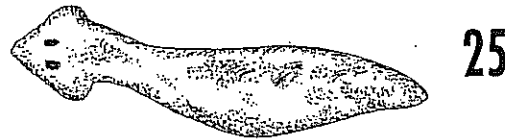
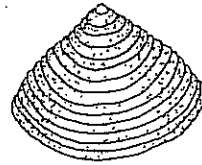


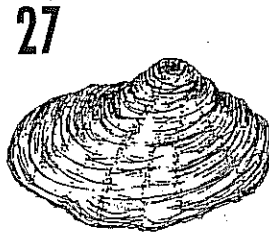
25. Planaria: Class Turbellaria  
5-30 mm long.  
Soft, flat body, crosseyed, spade shaped head.



26. Asiatic Clam: Class Pelecypoda  
10-50 mm long.  
Hard limestone shells with toothed hinge. Ridged triangular shaped shell. Filter feeder.



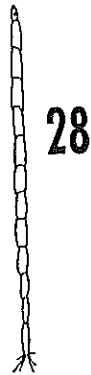
26



27

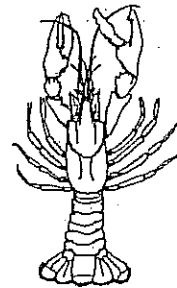
27. Native Clams and Mussels: Class Pelecypoda  
2-250 mm long.  
Shell with membranous hinge.

28. Biting Midge: Order Diptera, Family Ceratopogonidae  
2-15 mm long.  
Very slender, hairlike body. Often wiggling horizontally.



28

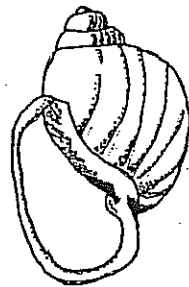
29. Crayfish: Class Crustacea, Order Decapoda  
10-150 mm long.  
8 legs, 2 large claws, resembles lobster.



29

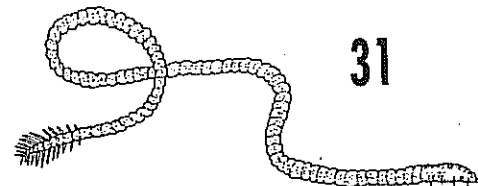
**GROUP IV TAXA:** Very tolerant to low DO levels and increased levels of organic nutrients.

30. Left Handed/Pouch Snail: Class Gastropoda  
10-25 mm long.  
No operculum, shell usually opens to the left.



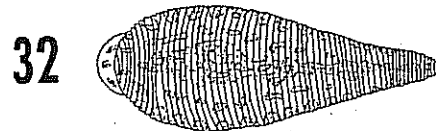
30

31. Segmented Worm: Class Oligochaeta  
1-30 mm long.  
Often red; looks like aquatic earthworm. Can be very tiny, thin segmented body.



31

32. Leech: Class Hirudinea  
5-50 mm in length.  
Segmented, suckers on posterior and anterior ends.



32

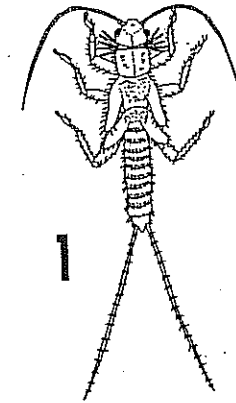
# COLORADO RIVER WATCH NETWORK

## MACRO KEY CARD

List of common aquatic benthic macroinvertebrates found in Central Texas

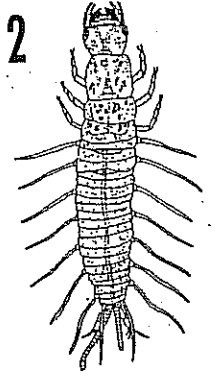
**GROUP I TAXA:** Very intolerant to pollution

1. Stonefly: Order Plecoptera.  
5-35 mm in length.  
6 legs with hooked tips, antennae, 2 hairlike tails, smooth, no gills on abdomen.



1

2. Dobsonfly: Order Megaloptera, Family Corydalidae.  
25-90 mm long.  
6 legs, large pinching jaws, tuft-like gills on underside, short antennae.



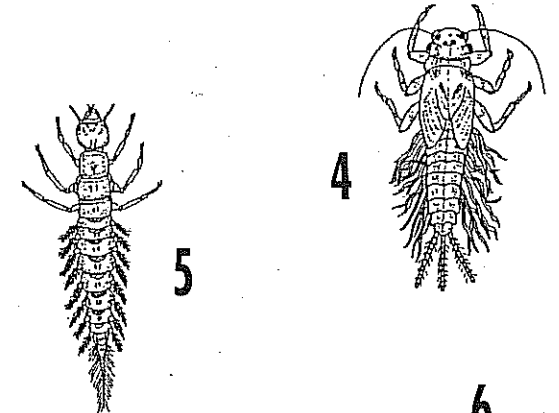
2

3. Snipe Fly: Order Diptera, Family Athericidae.  
10-18 mm long.  
Elongated, cylindrical, with head mostly retracted into thorax, spiny prolegs, two fringed filaments at end of abdomen.



3

4. Mayfly: Order Ephemeroptera, Family Leptophlebiidae.  
5-15 mm long.  
Platelike or feathery gills on side of abdomen, 2 or 3 long hair-like tails.



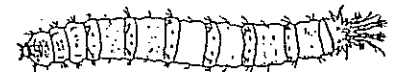
4

**GROUP II TAXA:** Somewhat intolerant to pollution and lower DO levels.

5. Alderfly: Order Megaloptera, Family Sialidae.  
10-25 mm long.  
Light colored, single projection on abdomen, no hooks, filaments on side of body.

5

6. Crane Fly: Order Diptera, Family Tipulidae.  
10-50 mm long.  
Short prolegs, ridges on top of bulbous abdomen, no distinct head.

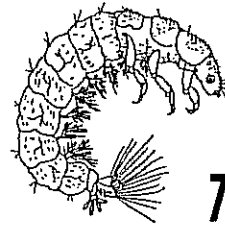


6

**7. Caddisfly: Order Trichoptera**

2-40 mm in length.

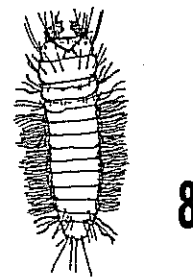
Hooked legs on upper third of body, 2 hooks on back end. May be in a stick or rock case.



**8. Aquatic Moth: Order Lepidoptera**

20-25 mm long.

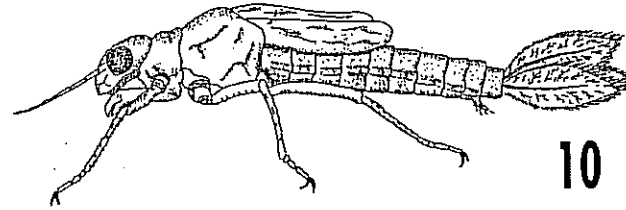
Body with 5 paired knobs on underside of abdominal segments, legs on first 3 segments.



**9. Dragonfly: Order Odonata, Suborder Anisoptera**

15-45 mm long.

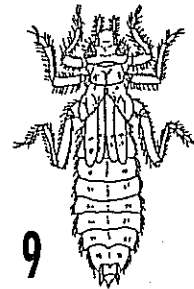
Lower lip is large and covers other mouthparts, large eyes, 3 pairs of legs on thorax.



**10. Damselfly: Order Odonata, Suborder Zygoptera**

10-30 mm long.

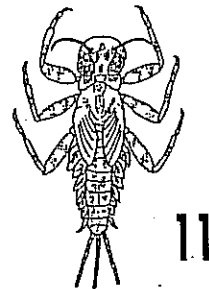
Large eyes, 6 hooked legs, wide oval to round abdomen.



**11. Mayfly: Order Ephemeroptera, Family Heptageniidae**

5-20 mm long.

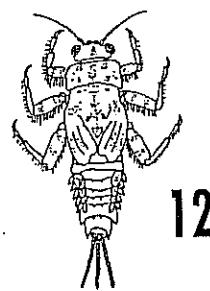
Develops in cold clear streams, 2 or 3 hairlike tails, feathery gills along abdomen.



**12. Mayfly: Order Ephemeroptera, Family Caenidae**

2-8 mm long.

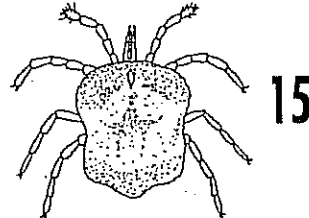
Small hair like gills on abdomen, found in detrital sediments or on thick algae.



**13. Mayfly: Order Ephemeroptera, Family Ephemeridae**

12-32 mm long.

Feathery abdominal gills and tusks. Lives in silt deposits.



**14. Mayfly: Order Ephemeroptera, Family Oligoneuridae**

8-17 mm long.

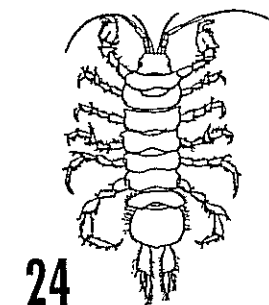
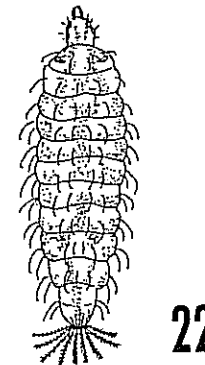
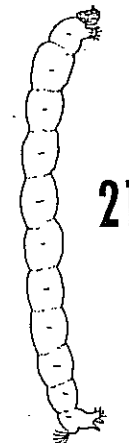
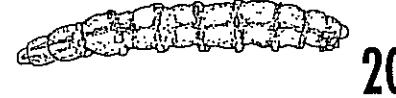
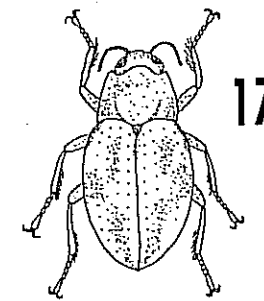
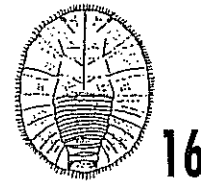
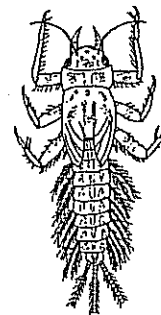
Found primarily in moderate to fast flowing streams, relatively large larvae.



**15. Water Mites: Class Arachnida, Hydracarina**

Less than 3 mm long.

Body compact, spider like with 4 conspicuous pairs of legs.



**16. Water Penny: Order Coleoptera**

4-6 mm long.

Flat saucer shaped, 6 tiny legs on ventral side.

**17. Riffle Beetle: Order Coleoptera, larva and adult**

1-8 mm long.

Oval body covered with tiny hairs. 6 legs, antennae.

**18. Scud: Class Crustacea, Order Amphipoda**

5-20 mm long.

Resembles a small shrimp. Eyes, if present, seen as spots on side of head

**GROUP III TAXA: Fairly tolerant to low DO levels and organic nutrients.**

**19. Black Fly: Order Diptera, Family Simuliidae**

2-8 mm long.

One end of the body wider. Black head, suction pad on opposite end.

**20. Deer Fly: Order Diptera, Family Tabanidae**

15-40 mm long.

No distinct head, cylindrical maggot like body with fleshy rings.

**21. Midge: Order Diptera, Family Chironomidae**

2-30 mm in length.

Narrow wormlike body with distinct head. One pair of prolegs at each end. Characteristic 'wiggler' movement.

**22. Soldier Fly: Order Diptera, Family Stratiomyidae**

10-50 mm long.

Distinct head, somewhat flattened body. Often appearing stiff and lifeless.

**23. Gilled Snail: Class Gastropoda**

10-40 mm long.

Shell opening to the right, covered by a thin operculum.

**24. Sowbug: Class Crustacea, Order Isopoda**

5-20 mm long.

Gray oblong body, more than 6 legs, long antennae.