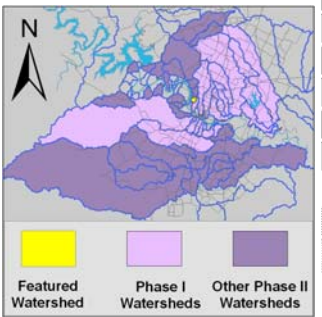


# Taylor Slough South Watershed

## Watershed Overview

Catchment	Total area	0.56 sq. miles					
	Area in recharge	0.56 sq. miles					
	Creek length	1 miles					
	Receiving water	Lake Austin					
Demographics	2000 population	1,653					
	2030 projected population	2,521					
	30 year projected % increase	153 %					
Land Use	Impervious cover (2003 estimate)	29.2 %					
	Impervious cover (2013 estimate)	41.5 %					
Overall EII Scores	2001	2004	2007	2010	2012	2014	2016
	60	56	60	60	59	57	57



## Flow Regime\* for Sample Sites on Taylor Slough South

Site	1999			2001					2004					2007					2010				2011				2012				2014					2016				
	Jan	Jan	Mar	Mar	May	May	Jun	Oct	Dec	Feb	May	Jun	Sep	Dec	Mar	May	May	Oct	Dec	Mar	Apr	Jul	Sep	Jan	Apr	May	Jul	Sep	Jan	Apr	May	Jul	Sep							
318	B	B	B	B	B	B	B	B	B	B	B	B	B	B	B	B	B	B	B	B	B	B	B	B	B	B	B	B	B	B	B	B	B	B	B	B	B	B	B	

\* B = baseflow    n = no flow    S = storm flow    blue = Samples were taken    light blue = Samples were not taken    blank = not visited

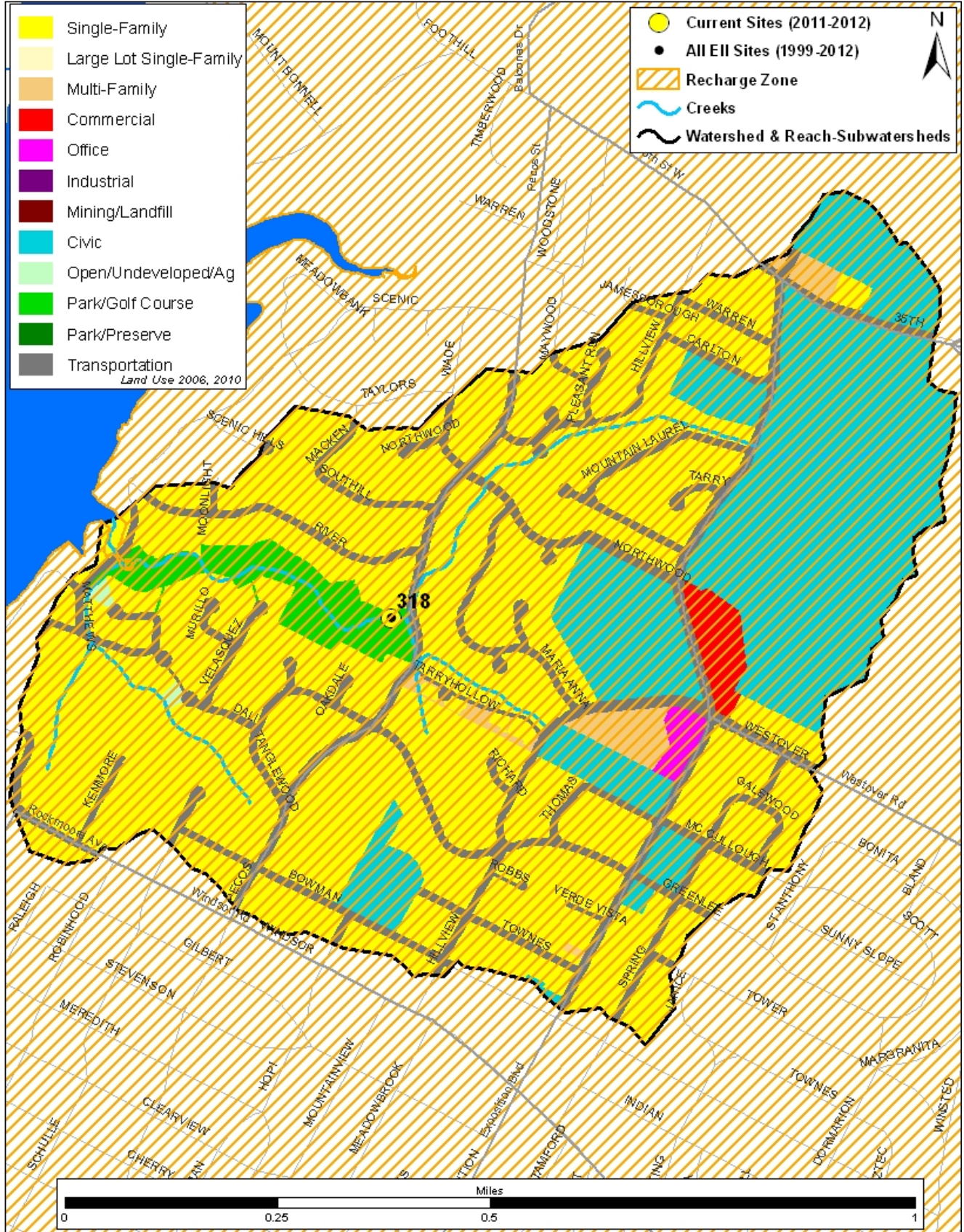
## Index scores\* for Taylor Slough South by Year

Reach	Site	Site Name	Year	Water Quality	Sediment**	Contact Rec.	Non-Contact Rec.	Physical Integrity	Aquatic Life	Benthic subindex	Diatom subindex	Total EII Score
TYS1	318	Taylor Slough South @ Reed Park (TSS)	1998	43	57	64	78	42	37	56	18	54
TYS1	318	Taylor Slough South @ Reed Park (TSS)	2001	55	66	55	80	64	37	42	32	57
TYS1	318	Taylor Slough South @ Reed Park (TSS)	2004	43	68	44	82	56	40	32	48	56
TYS1	318	Taylor Slough South @ Reed Park (TSS)	2007	55	60	52	81	62	50	49	51	60
TYS1	318	Taylor Slough South @ Reed Park (TSS)	2010	51	68	25	88	63	64	54	74	60
TYS1	318	Taylor Slough South @ Reed Park (TSS)	2012	51	65	34	78	57	68	69	67	59
TYS1	318	Taylor Slough South @ Reed Park (TSS)	2014	41	62	31	69	68	68	62	73	57
TYS1	318	Taylor Slough South @ Reed Park (TSS)	2016	44	71	29	87	67	43	33	58	57

\* blank cells indicate parameter was not collected, blank row indicate site was dropped    \*\*sediment samples only collected at the downstream site  
100-87.5 Excellent    87.5-75 V. Good    75-62.5 Good    62.5-50 Fair    50-37.5 Marginal    37.5-25 Poor    25-12.5 Bad    12.5-0 V. Bad

# Taylor Slough South Watershed

## Land Use Map



# Taylor Slough South Watershed

## Aerial Map



# Taylor Slough South Watershed

## Water Quality Data – Temperature, Conductivity, pH, Dissolved Oxygen & E. coli for 2016 Sample Sites (Downstream to Upstream)

Qualifiers to the left of the value	>	Greater than	Qualifiers to the right of the value	(blank)	Useable
	<	Less than		S	Exceeds standard range
	<J	Less than detected limit		R	Rejected, failed QC
	J	Estimated			

Watershed	Site	EII Reach	Date	<>	Temp.	flag	<>	Cond.	flag	<>	pH	flag	<>	D.O.	flag	<>	E. Coll	flag
S Taylor Slough	318	TYS1	01/12/2016		16.0			987			7.96			15.9			231.0	
S Taylor Slough	318	TYS1	04/12/2016		19.8			921			8.01			7.8			579.0	
S Taylor Slough	318	TYS1	05/13/2016		24.1			890			7.97			8.9				
S Taylor Slough	318	TYS1	07/12/2016		24.9			853			7.99			7.5			1300.0	
S Taylor Slough	318	TYS1	09/13/2016		24.4			889			7.99			7.4			579.0	
TYS1 Mean					21.8			908			7.98			9.5			672.2	
Taylor Slough South Mean					21.8			908			7.89			9.5			672.2	

Gray highlighting indicates that the value exceeds one standard deviation from the mean of all E.I.I. sites combined.

Summary Statistics for all 2015-2016 E.I.I. Sites Combined					
Parameter	2015-2016 Average	2015-2016 Minimum	2015-2016 Maximum	1 Standard Deviation Above	1 Standard Deviation Below
Temperature (C°)	20.7	5.8	34.2	27.5	
Conductivity (uS/cm)	722	160	3549	955	
pH (Standard units)	7.86	5.85	10.25	8.24	7.47
D.O. (mg/l)	7.9	0.1	18.7	10.4	5.5
E. Coli (col/100ml)	316.1	1.0	2420.0	883.7	

# Taylor Slough South Watershed

## Water Quality Data – Ammonia, Nitrate / Nitrite, Ortho-Phosphorus, Total Suspended Solids & Turbidity for 2016 Sample Sites (Downstream to Upstream)

<b>Qualifiers to the left of the value</b>	>	Greater than	<b>Qualifiers to the right of the value</b>	(blank)	Useable
	<	Less than		S	Exceeds standard range
	<J	Less than detected limit		R	Rejected, failed QC
	J	Estimated			

Watershed	Site	EII Reach	Date	NH3-N		NO3/NO2		Ortho-P		T.S.S		Turb.		
				<	flag	<>	flag	<>	flag	<>	flag	<>	flag	
S Taylor Slough	318	TYS1	01/12/2016	<J	0.008		8.01	<J	0.004		1.4		2.3	R
S Taylor Slough	318	TYS1	04/12/2016		0.049		4.91		0.039	<J	1.0		0.8	
S Taylor Slough	318	TYS1	05/13/2016											
S Taylor Slough	318	TYS1	07/12/2016	<J	0.008		7.11	<J	0.004	<J	1.0		1.2	R
S Taylor Slough	318	TYS1	09/13/2016		0.020		6.47	<J	0.004		2.3		1.7	
TYS1 Mean					0.021		6.62		0.013		1.4		1.5	
Taylor Slough South Mean					0.021		6.62		0.013		1.4		1.5	

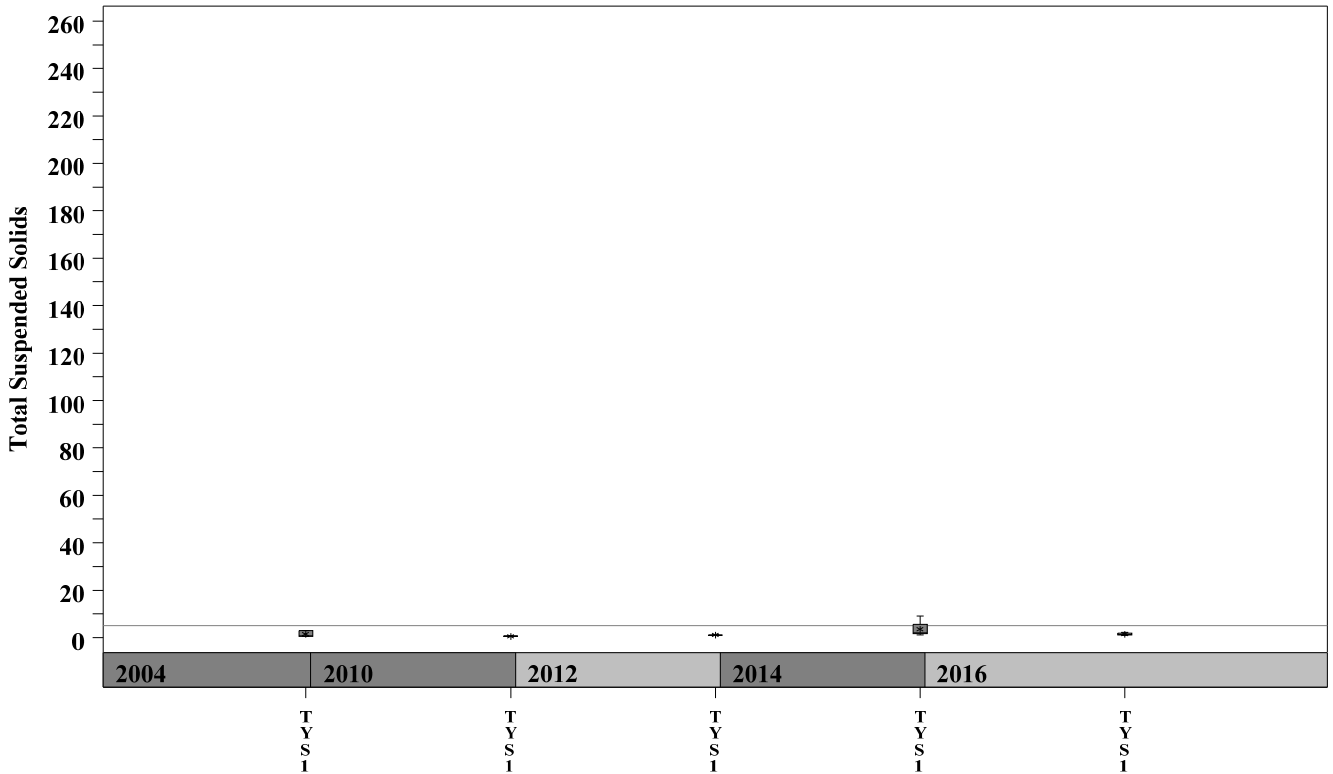
Gray highlighting indicates that the value exceeds one standard deviation from the mean of all E.I.I. sites combined.

Summary Statistics for all 2015-2016 E.I.I. Sites Combined				
Parameter	2015-2016 Average	2015-2016 Minimum	2015-2016 Maximum	1 Standard Deviation Above
NH3-N (mg/l)	0.018	0.008	0.881	0.085
NO3-N (mg/l)	1.14	0.01	12.0	3.16
Ortho-P (mg/l)	0.016	0.004	0.661	0.08
T.S.S. (mg/l)	3.7	1.0	58.2	9.7
Turbidity (NTU)	4.4	0.2	98.6	11.7

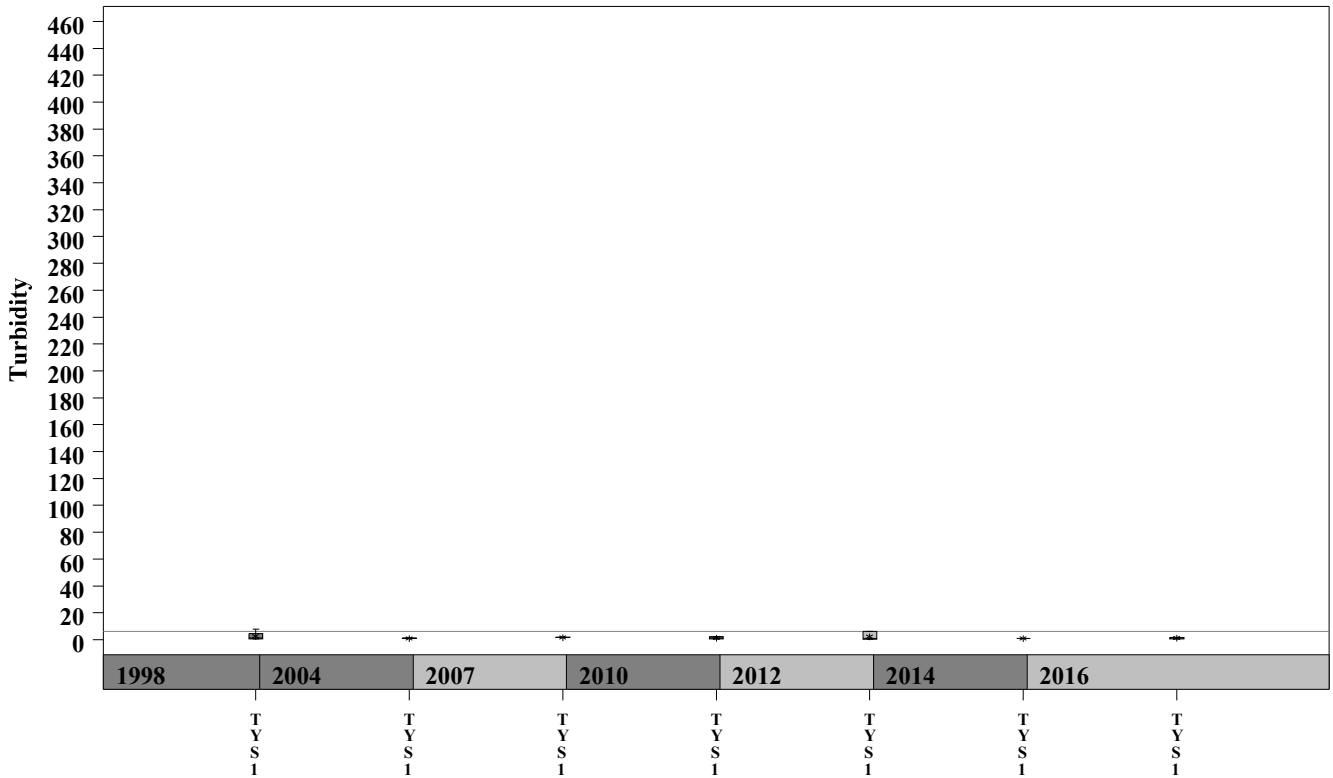
# Taylor Slough South Watershed

Data Summary Graphs – Total Suspended Solids and Turbidity (Downstream to Upstream by Year)

Parameter = TOTAL SUSPENDED SOLIDS Unit = mg/L Watershed = Taylor Slough South



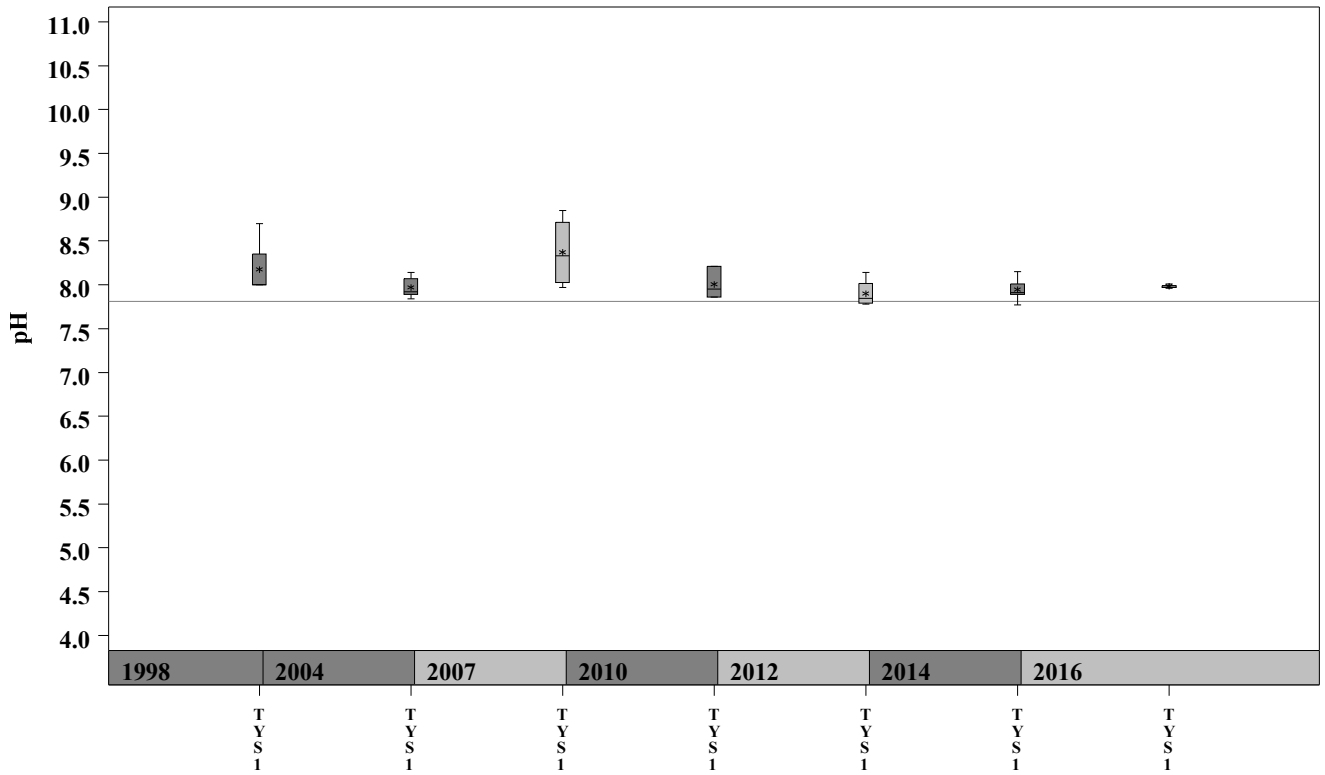
Parameter = TURBIDITY Unit = NTU Watershed = Taylor Slough South



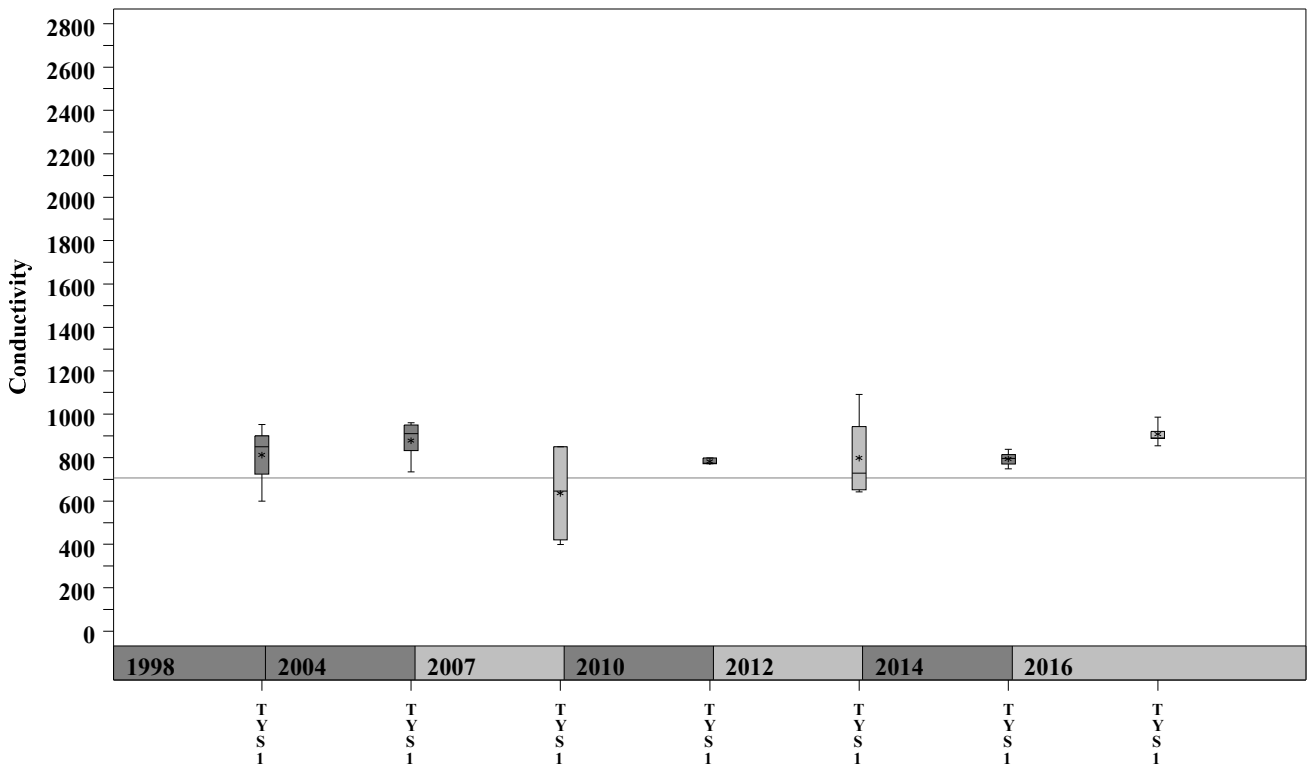
# Taylor Slough South Watershed

Data Summary Graphs – pH and Conductivity (Downstream to Upstream by Year)

**Parameter = pH Unit = Standard Units Watershed = Taylor Slough South**



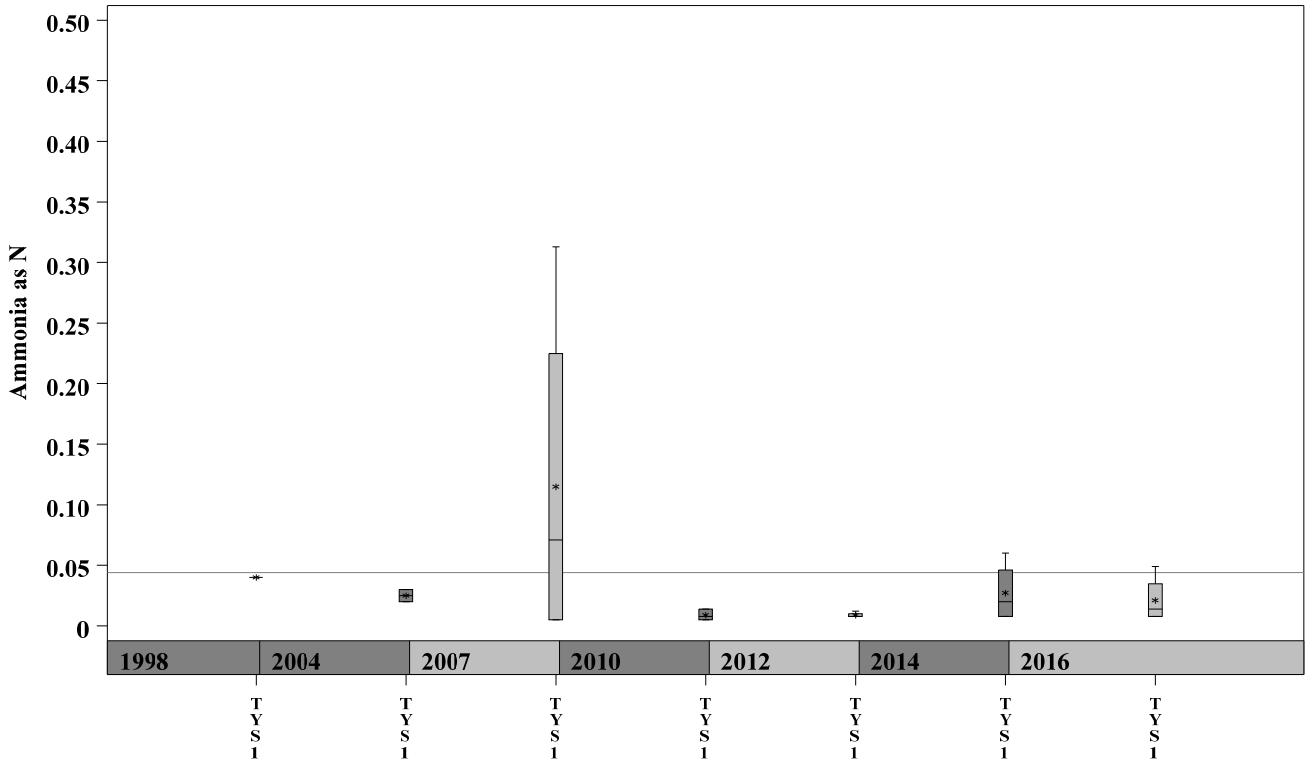
**Parameter = CONDUCTIVITY Unit = uS/cm Watershed = Taylor Slough South**



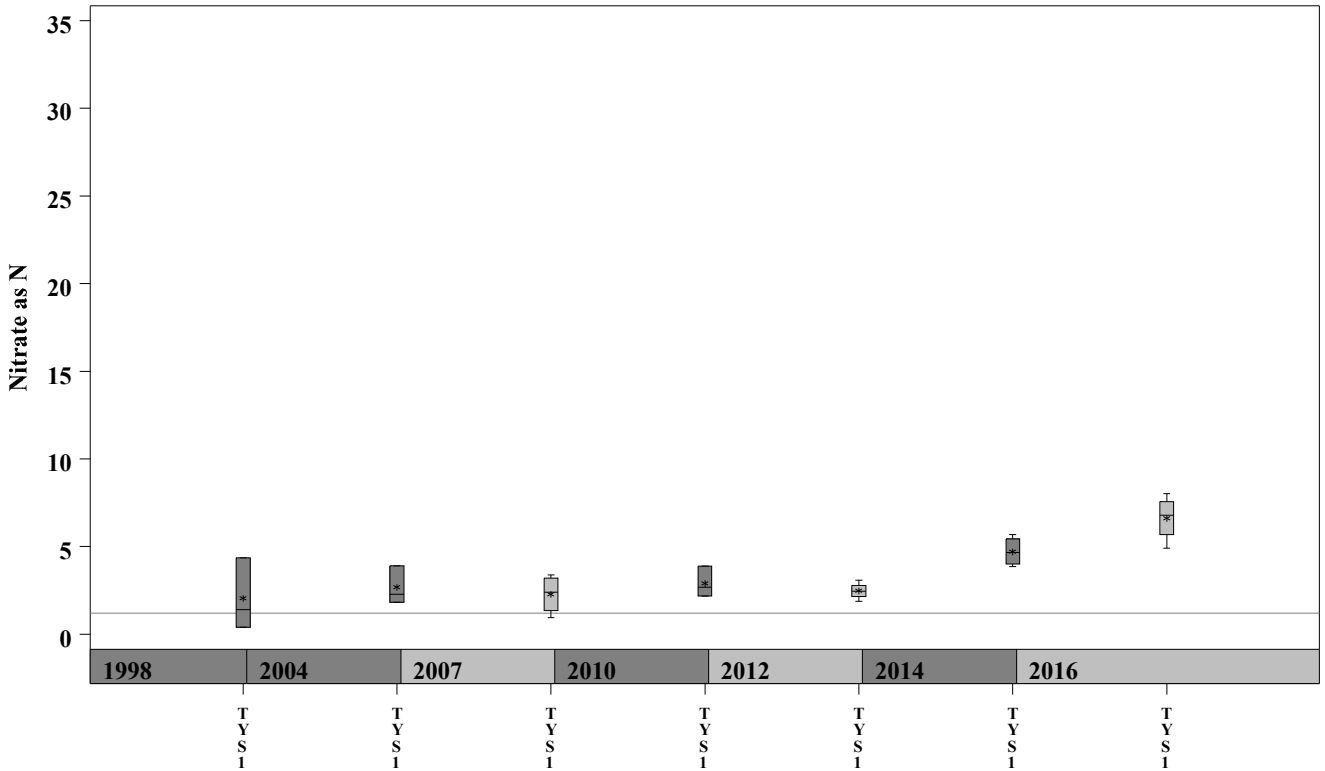
# Taylor Slough South Watershed

Data Summary Graphs – Ammonia and Nitrate/Nitrite (Downstream to Upstream by Year)

Parameter=AMMONIA AS N Unit=mg/L Watershed=Taylor Slough South



Parameter=NITRATE AS N Unit=mg/L Watershed=Taylor Slough South

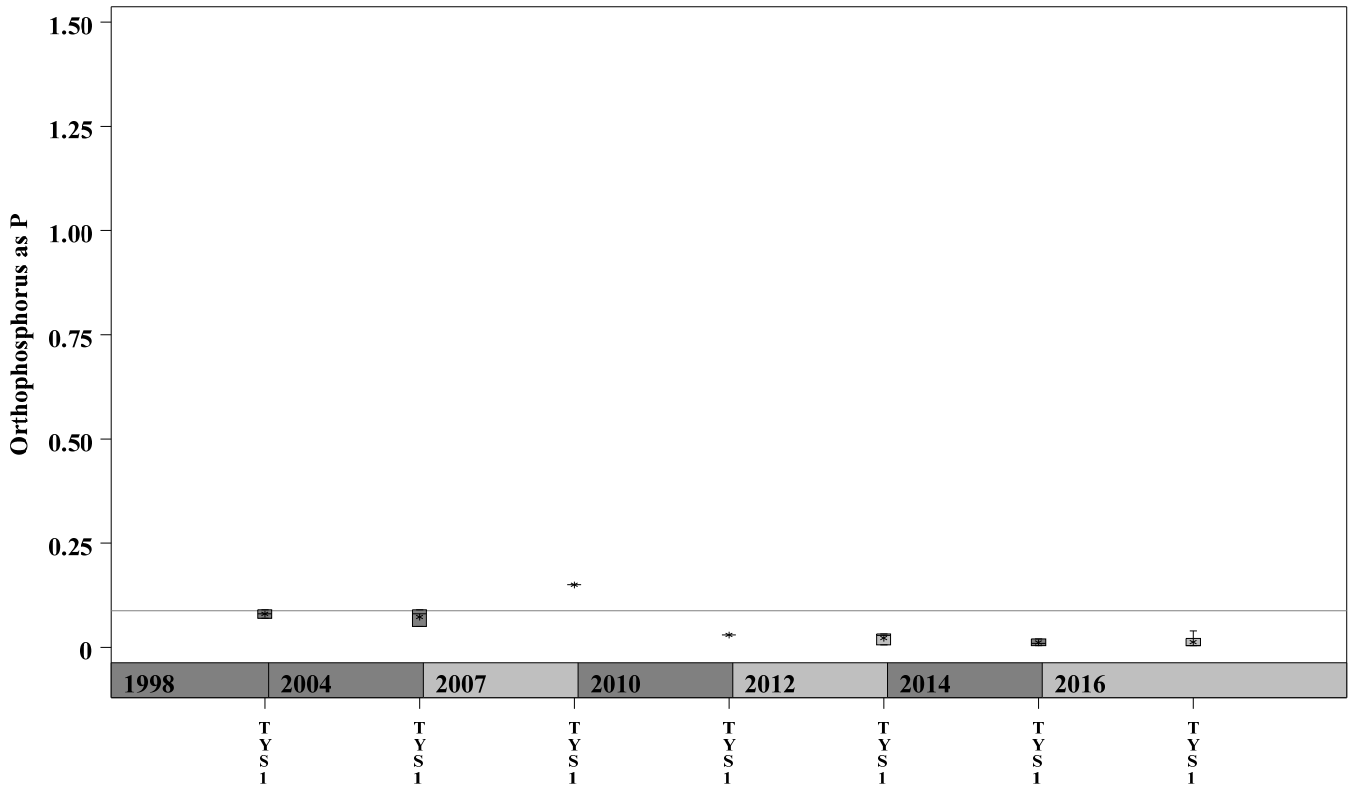




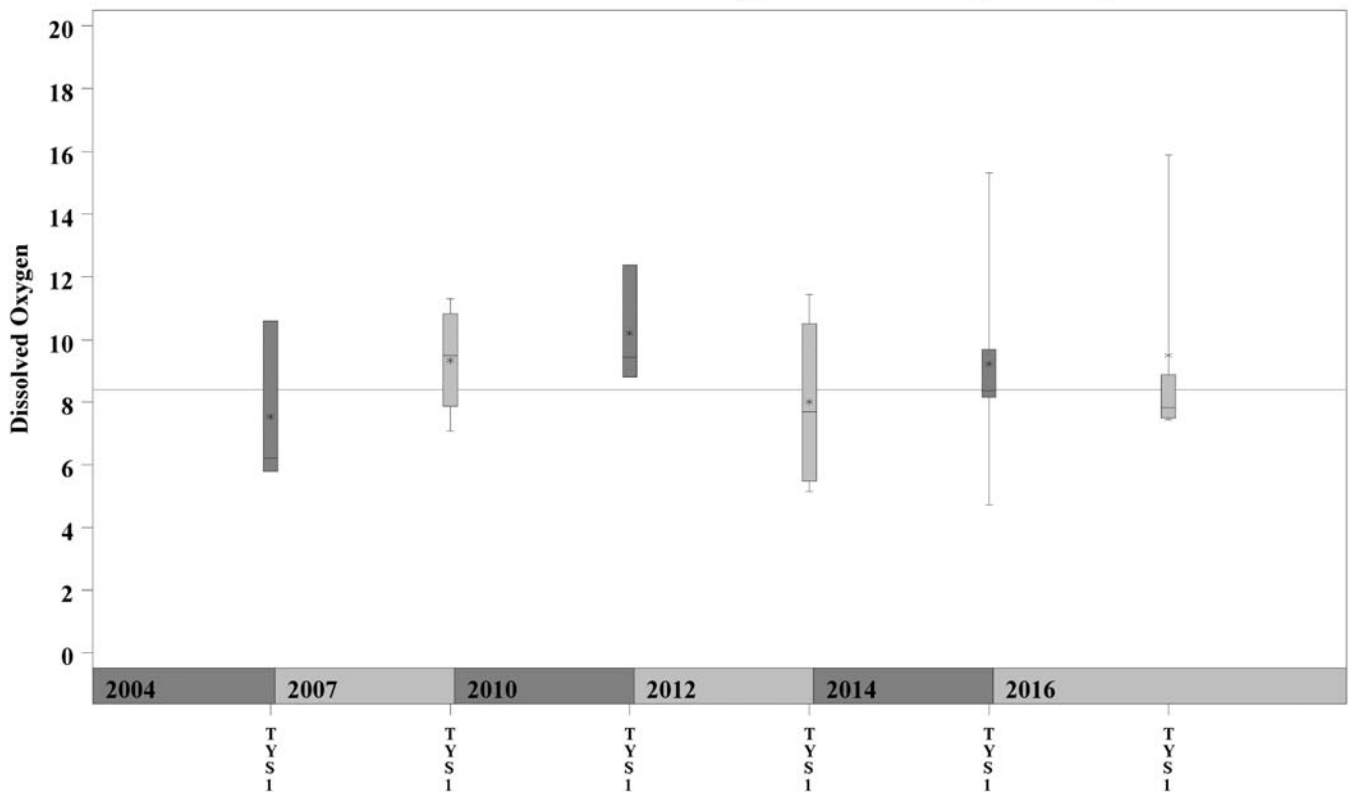
# Taylor Slough South Watershed

Data Summary Graphs – Orthophosphate and Dissolved Oxygen (Downstream to Upstream by Year)

Parameter = ORTHOPHOSPHORUS AS P Unit = mg/L Watershed = Taylor Slough South

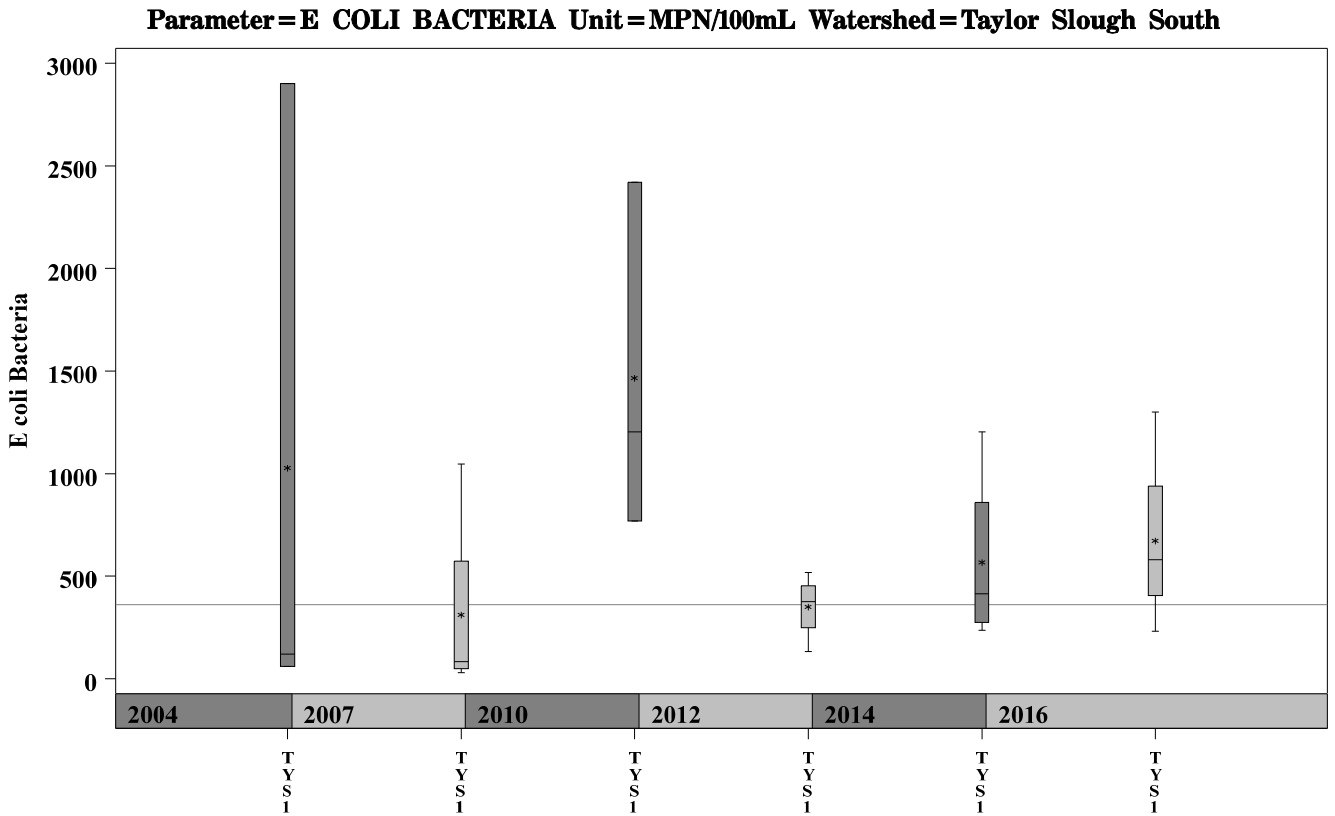


Parameter = DISSOLVED OXYGEN Unit = mg/L Watershed = Taylor Slough South



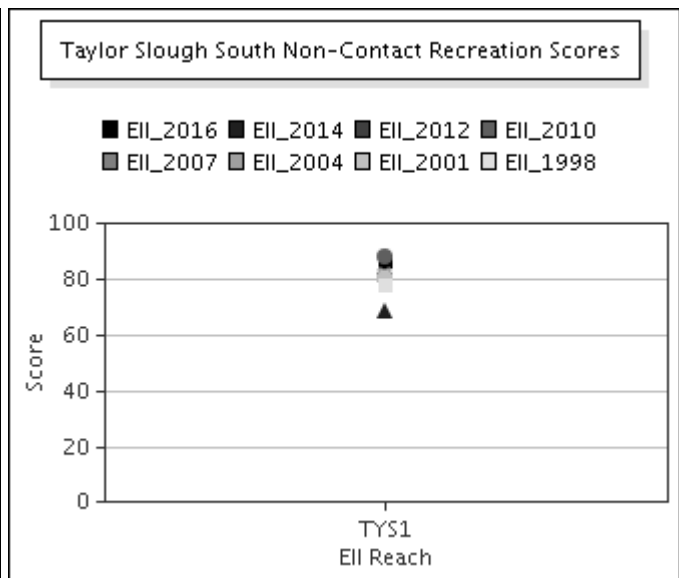
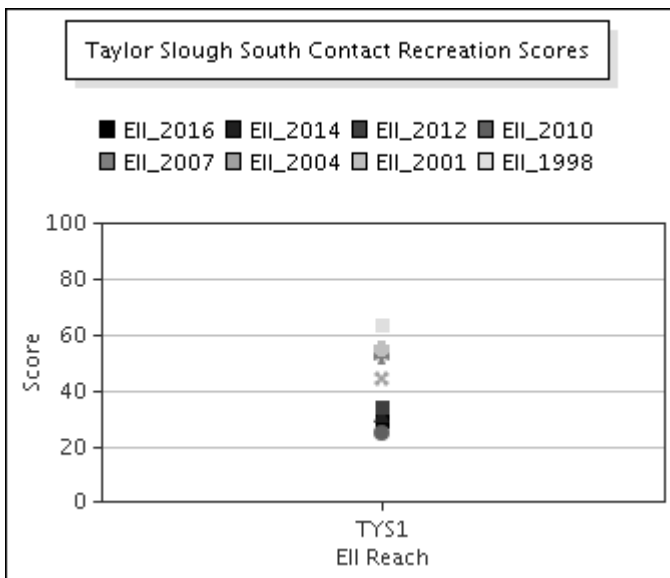
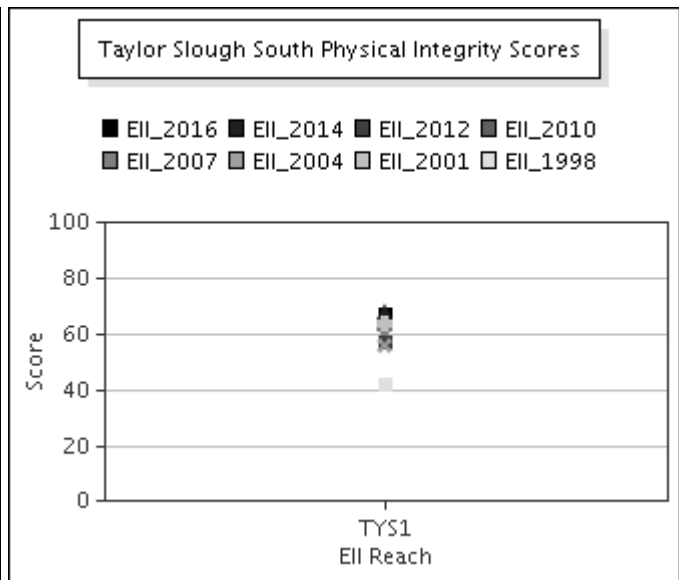
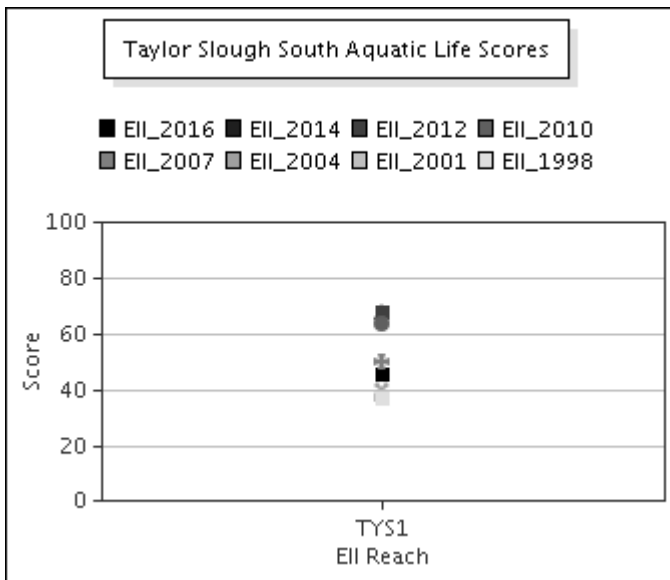
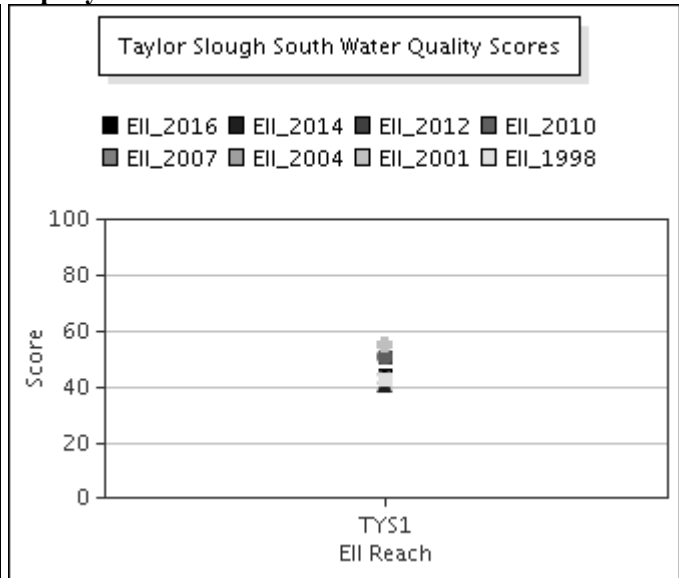
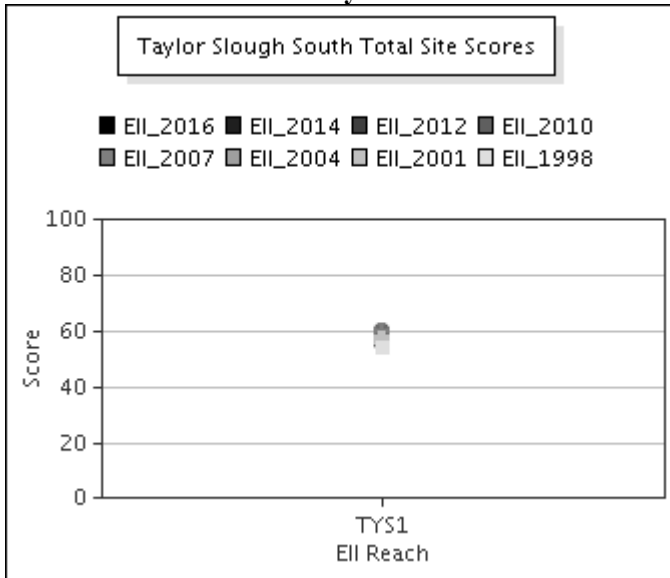
# Taylor Slough South Watershed

Data Summary Graphs – *E.coli* (Downstream to Upstream by Year)



# Taylor Slough South Watershed

Score Summary – Reach scores for each sample year



# Taylor Slough South Watershed

## Benthic Macroinvertebrates – Taxa List, Pollution Tolerance Index & Functional Feeding Group for 2016 Sample Sites (Downstream to Upstream)

Benthic Macroinvertebrates - Taylor Slough South			TYS @ Reed Pk (318) 05/13/2016 (WRE)
Benthic Macroinvertebrate ID	PTI	FFG	
Fallceon	4	CG,SC	3
Rheumatobates	5	P	1
Argia	6	P	30
Cheumatopsyche	6	FC	3
Chironomidae	6	FC,P	45
Hemerodromia	6	CG,P	1
Tanypodinae	6	P	2
Hyaella	8	CG,SH	1
Oligochaeta	8	CG	6
Physella	9	SC	3
Dugesia		CG,P	5

# Taylor Slough South Watershed

## Site Photographs



318\_t00-ds-05\_17\_2004



318\_t00-ur-05\_17\_2004



318\_t00-us-05\_17\_2004



318\_us\_06\_18\_2007



318\_ur\_06\_18\_2007

---

# Taylor Slough South Watershed

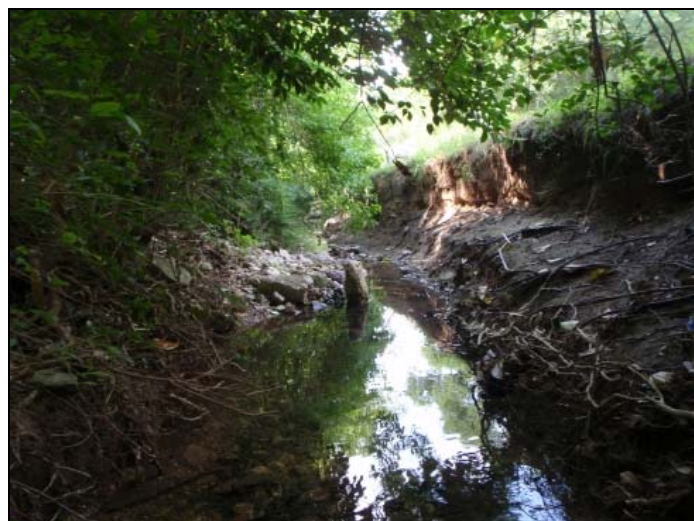
Site Photographs



318\_00-us-05\_27\_2010



318\_00-ur-05\_27\_2010



318\_00-ds-05\_27\_2010