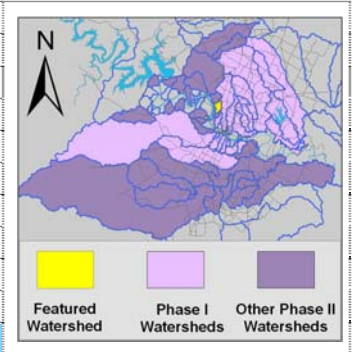


Taylor Slough North Watershed

Watershed Overview

Catchment	Total area	1.4 square miles					
	Area in recharge	1.1 square miles					
	Creek length	2 miles					
	Receiving water	Lake Austin					
Demographics	2000 population	2,219					
	2030 projected population	3,779					
	30 year projected % increase	70 %					
Land Use	Impervious cover (2003 estimate)	27.2 %					
	Impervious cover (2013 estimate)	33.6 %					
Overall EII Scores	2001	2004	2007	2010	2012	2014	2016
	61	61	62	69	68	74	66



Flow Regime* for Sample Sites on Taylor Slough North

Site	1999		2001				2004					2007					2010				2011			2012				2014				2016					
	Jan	Jan	Mar	Mar	Jun	Sep	Dec	Mar	May	May	Jun	Oct	Dec	Feb	May	Jun	Sep	Dec	Mar	May	May	Oct	Dec	Mar	Apr	Jul	Sep	Jan	Apr	May	Jul	Sep	Jan	Apr	Jun	Jul	Sep
177	B	B	B	B	n	n	B	B	B	B	n	n	B																								
1091	B	B	B	B	B	B	B	B	B	B	n	B																									
3969													B	B	B	B	B	B	B	B	B	B	B	B	B	n	n	B	B	B	B	n	B	B	B	n	B

* B = baseflow n = no flow S = storm flow blue = Samples were taken light blue = Samples were not taken blank = not visited

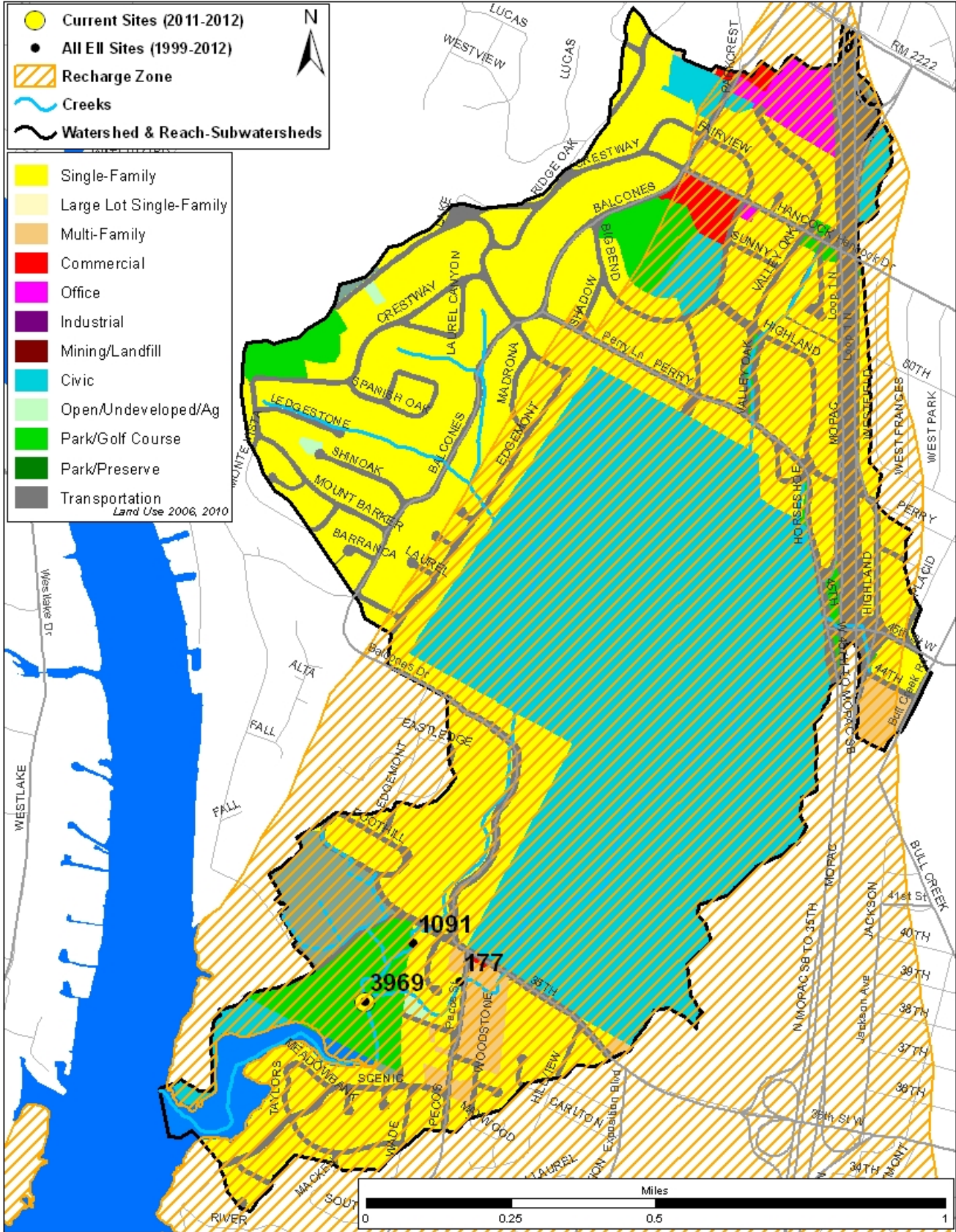
Index scores* for Taylor Slough North Sites by Year

Reach	Site	Site Name	Year	Water Quality	Sediment**	Contact Rec.	Non-Contact Rec.	Physical Integrity	Aquatic Life	Benthic subindex	Diatom subindex	Total EII Score
TYN1	177	Taylor Slough North @ Pecos St	1998	57	52	86	73	48	32	38	25	58
TYN1	1091	Taylor Slough North @ Old Bull Creek Rd	1998	61	52	88	67	58	42	34	50	61
TYN1	177	Taylor Slough North @ Pecos St	2001	68	49	65	84	70	32	45	19	57
TYN1	1091	Taylor Slough North @ Old Bull Creek Rd	2001	50	49	75	63	64	63	48	77	57
TYN1	177	Taylor Slough North @ Pecos St	2004	62	60	43	78	76	62	44	79	64
TYN1	1091	Taylor Slough North @ Old Bull Creek Rd	2004	60	60	36	78	60	49	32	66	57
TYN1	3969	Taylor Slough North @ Mayfield Park	2007	53	61	37	89	71	60	43	77	62
TYN1	3969	Taylor Slough North @ Mayfield Park	2010	63	62	53	93	72	73	64	82	69
TYN1	3969	Taylor Slough North @ Mayfield Park	2012	62	61	70	77	73	66	53	79	68
TYN1	3969	Taylor Slough North @ Mayfield Park	2014	68	71	83	73	81	67	61	73	74
TYN1	3969	Taylor Slough North @ Mayfield Park	2016	63	69	56	76	69	65	59	71	66

* blank cells indicate parameter was not collected, blank row indicate site was dropped **sediment samples only collected at the downstream site
 100-87.5 Excellent 87.5-75 V. Good 75-62.5 Good 62.5-50 Fair 50-37.5 Marginal 37.5-25 Poor 25-12.5 Bad 12.5-0 V. Bad

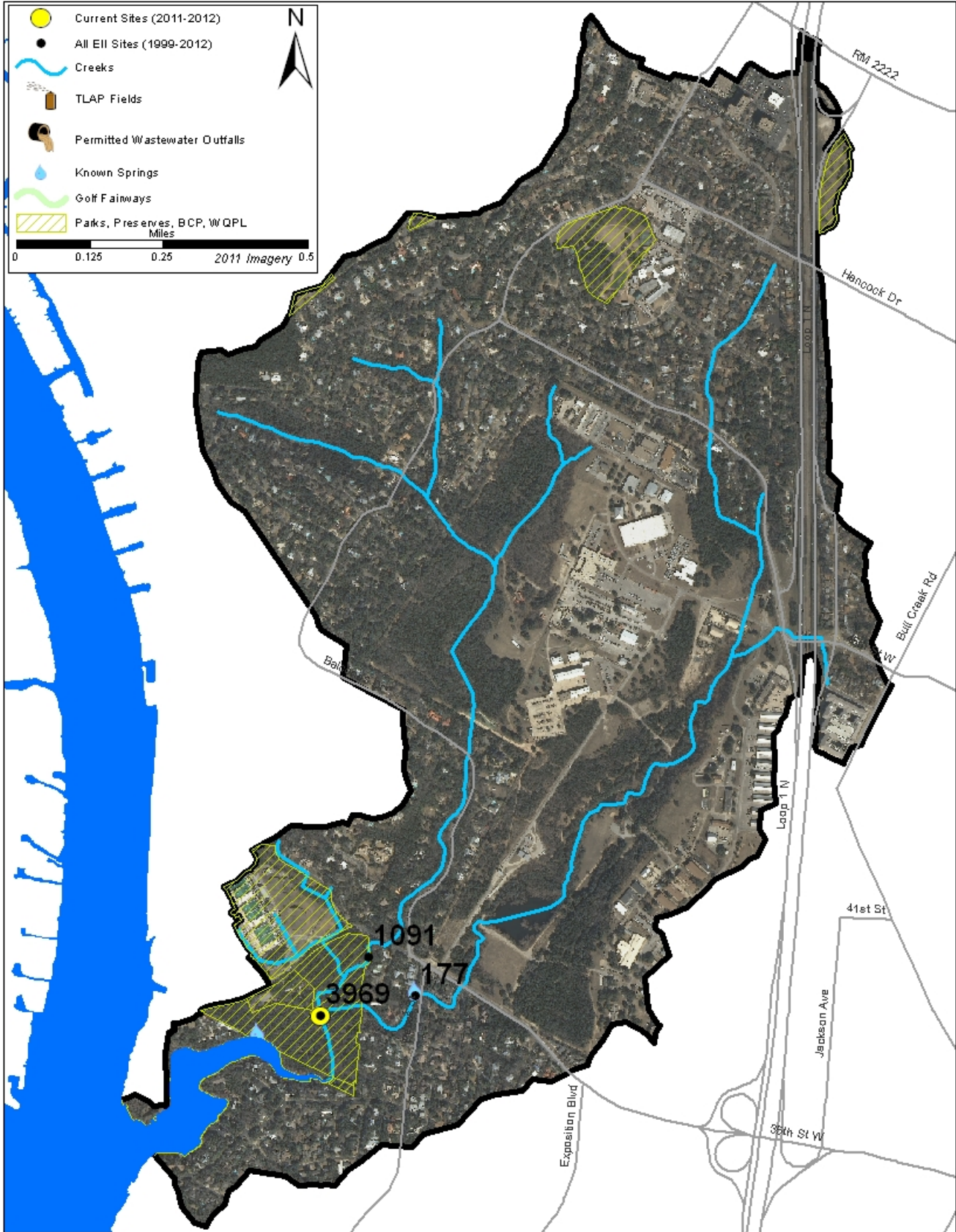
Taylor Slough North Watershed

Land Use Map



Taylor Slough North Watershed

Aerial Map



Taylor Slough North Watershed

Water Quality Data – Temperature, Conductivity, pH, Dissolved Oxygen & *E. coli* for 2016 Sample Sites (Downstream to Upstream)

Qualifiers to the left of the value	>	Greater than	Qualifiers to the right of the value	(blank)	Useable
	<	Less than		S	Exceeds standard range
	<J	Less than detected limit		R	Rejected, failed QC
	J	Estimated			

Watershed	Site	EII Reach	Date	Temp. flag	Cond. flag	pH flag	D.O. flag	E. Coli flag
N Taylor Slough	3969	TYN1	01/12/2016	10.6	990	7.81	10.1	53.8
N Taylor Slough	3969	TYN1	04/12/2016	18.5	1072	7.79	7.8	34.5
N Taylor Slough	3969	TYN1	06/22/2016	25.3	755	7.55	5.6	
N Taylor Slough	3969	TYN1	09/13/2016	25.4	1114	7.43	6.4	1119.9
TYN1 Mean				19.9	983	7.64	7.5	402.7
Taylor Slough North				19.9	983	7.64	7.5	402.7

Gray highlighting indicates that the value exceeds one standard deviation from the mean of all E.I.I. sites combined.

Summary Statistics for all 2015-2016 E.I.I. Sites Combined					
Parameter	2015-2016 Average	2015-2016 Minimum	2015-2016 Maximum	1 Standard Deviation Above	1 Standard Deviation Below
Temperature (C°)	20.7	5.8	34.2	27.5	
Conductivity (uS/cm)	722	160	3549	955	
pH (Standard units)	7.86	5.85	10.25	8.24	7.47
D.O. (mg/l)	7.9	0.1	18.7	10.4	5.5
<i>E. Coli</i> (col/100ml)	316.1	1.0	2420.0	883.7	

Taylor Slough North Watershed

Water Quality Data – Ammonia, Nitrate / Nitrite, Ortho-Phosphorus, Total Suspended Solids & Turbidity for 2016 Sample Sites (Downstream to Upstream)

Qualifiers to the left of the value	>	Greater than	Qualifiers to the right of the value	(blank)	Useable
	<	Less than		S	Exceeds standard range
	<J	Less than detected limit		R	Rejected, failed QC
	J	Estimated			

Watershed	Site	EII Reach	Date	NH3-N		NO3/NO2		Ortho-P		T.S.S		Turb.		
				<>	flag	<>	flag	<>	flag	<>	flag	<>	flag	
N Taylor Slough	3969	TYN1	01/12/2016	<J	0.008		0.47	<J	0.004	<J	1.0		0.3	R
N Taylor Slough	3969	TYN1	04/12/2016	<J	0.008	<J	0.01	<J	0.004	<J	1.1		5.1	
N Taylor Slough	3969	TYN1	06/22/2016											
N Taylor Slough	3969	TYN1	09/13/2016		0.022	<J	0.01	<J	0.004		6.4		5.9	
TYN1 Mean					0.013		0.16		0.004		2.8		3.8	
Taylor Slough North					0.013		0.16		0.004		2.8		3.8	

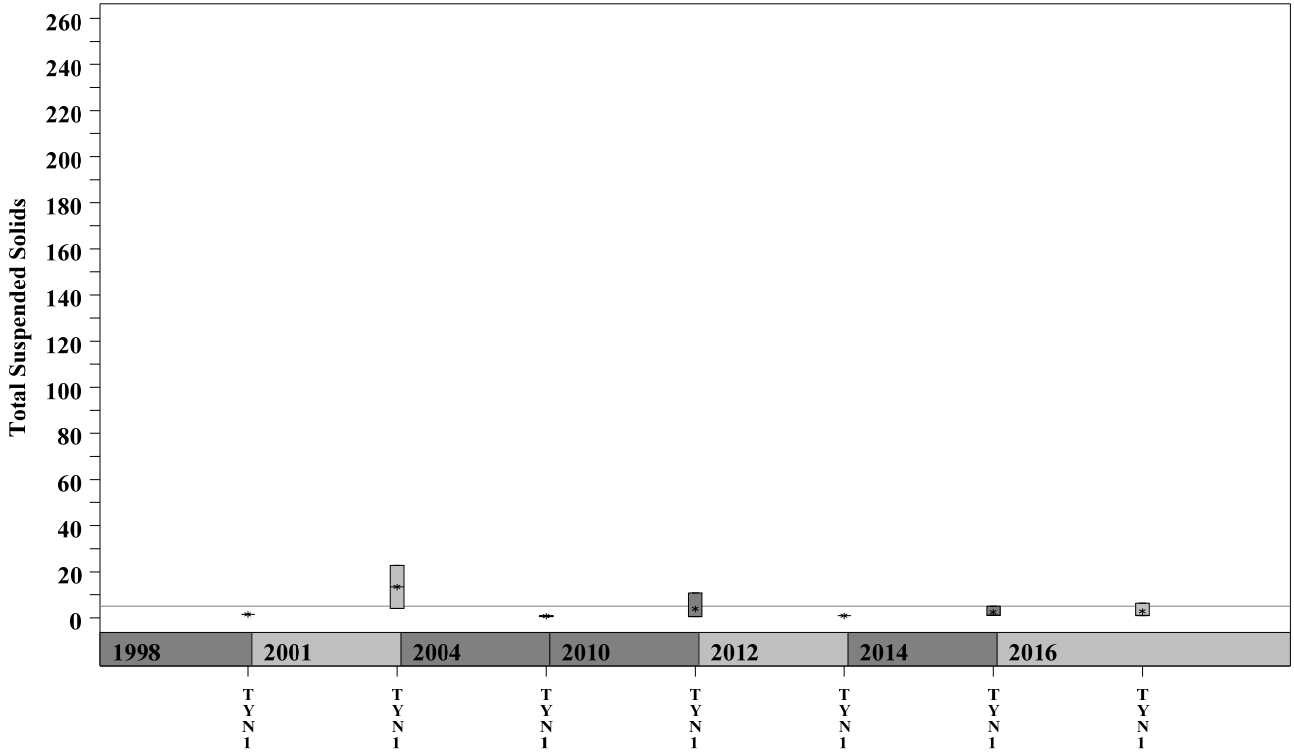
Gray highlighting indicates that the value exceeds one standard deviation from the mean of all E.I.I. sites combined.

Summary Statistics for all 2015-2016 E.I.I. Sites Combined				
Parameter	2015-2016 Average	2015-2016 Minimum	2015-2016 Maximum	1 Standard Deviation Above
NH3-N (mg/l)	0.018	0.008	0.881	0.085
NO3-N (mg/l)	1.14	0.01	12.0	3.16
Ortho-P (mg/l)	0.016	0.004	0.661	0.08
T.S.S. (mg/l)	3.7	1.0	58.2	9.7
Turbidity (NTU)	4.4	0.2	98.6	11.7

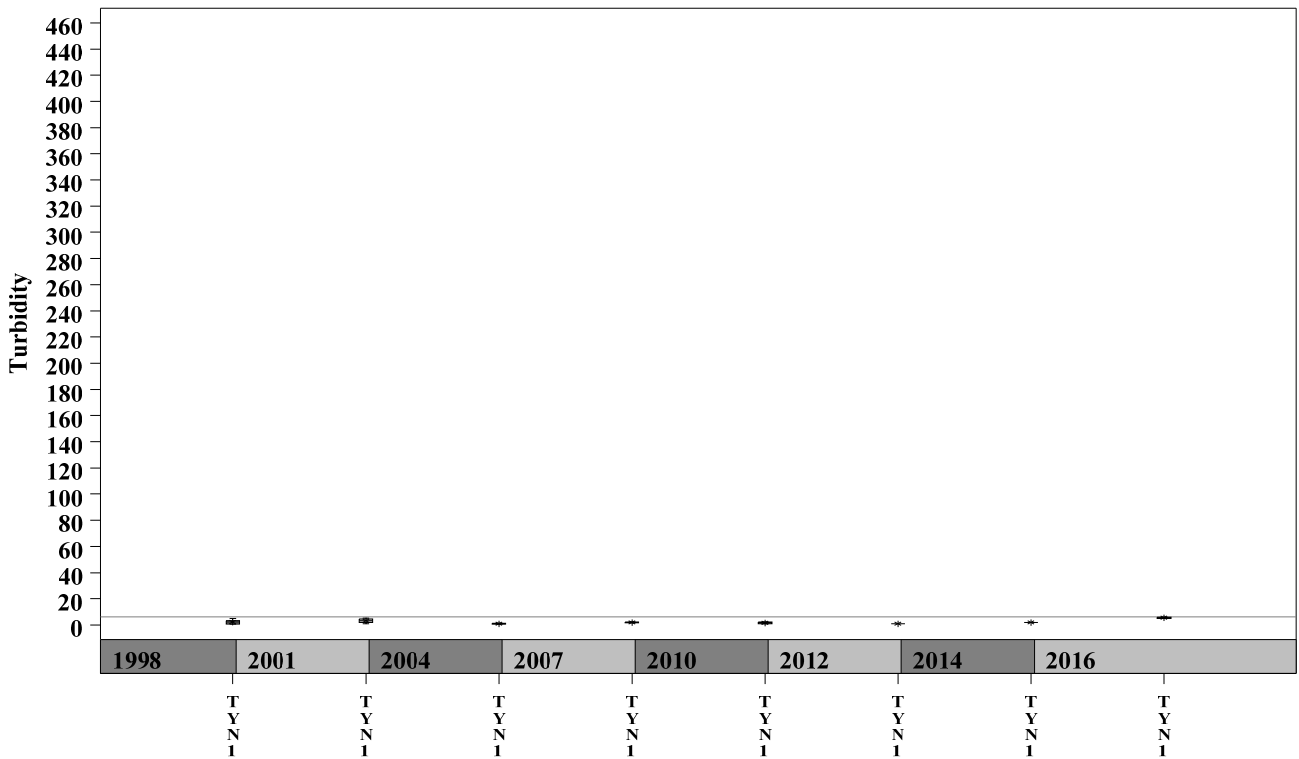
Taylor Slough North Watershed

Data Summary Graphs – Total Suspended Solids and Turbidity (Downstream to Upstream by Year)

Parameter=TOTAL SUSPENDED SOLIDS Unit=mg/L Watershed=Taylor Slough North



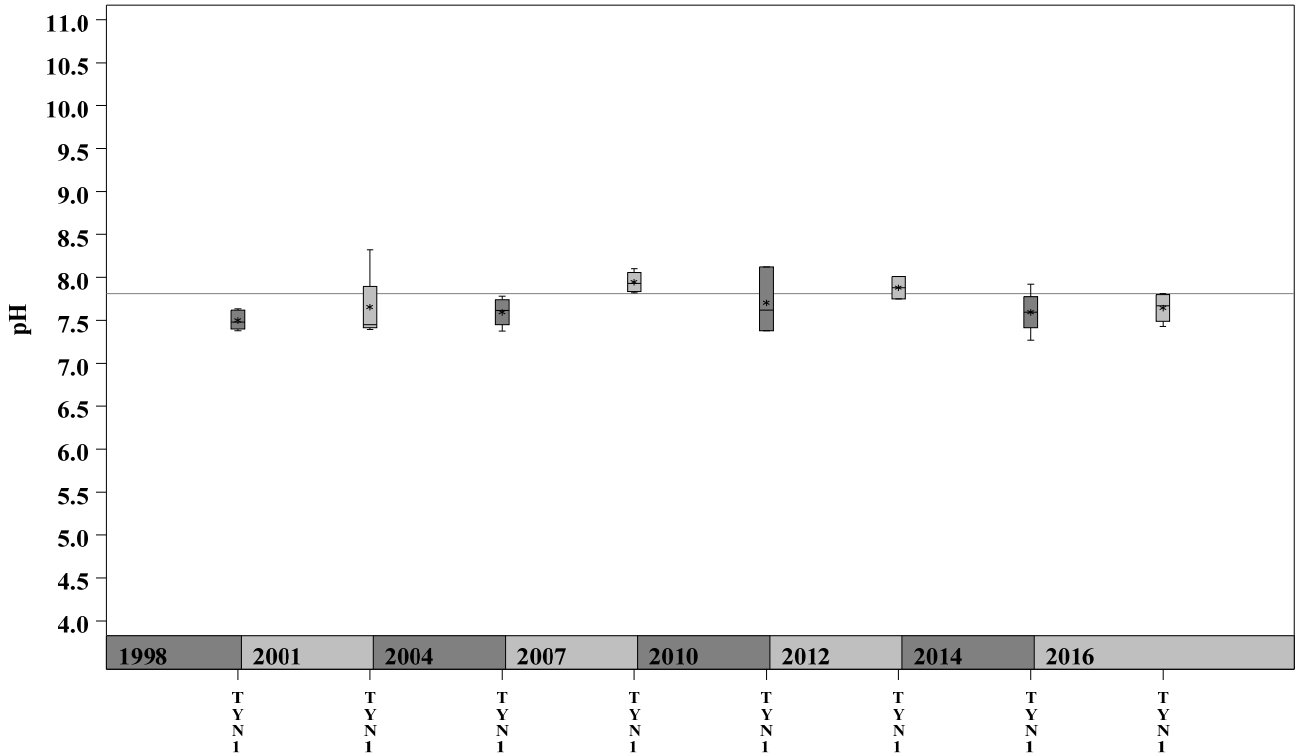
Parameter=TURBIDITY Unit=NTU Watershed=Taylor Slough North



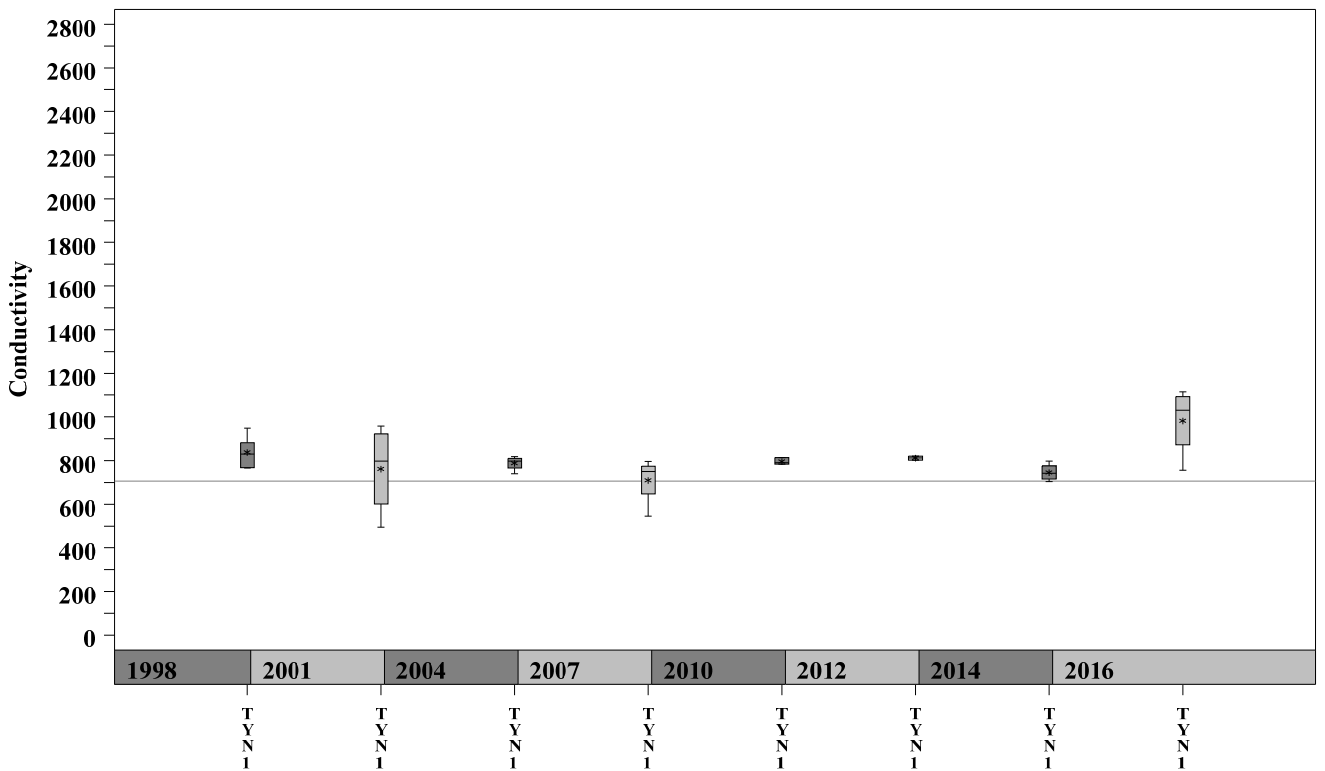
Taylor Slough North Watershed

Data Summary Graphs – pH and Conductivity (Downstream to Upstream by Year)

Parameter = pH Unit = Standard Units Watershed = Taylor Slough North

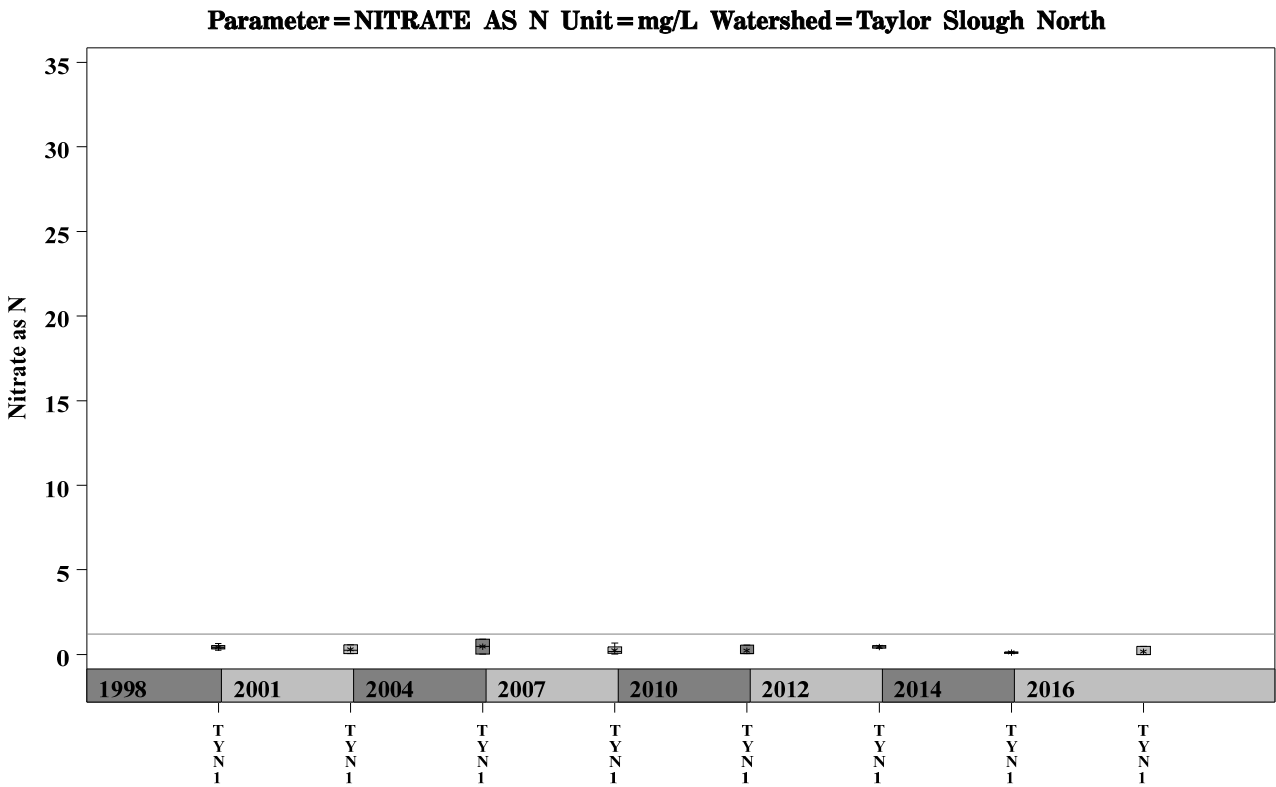
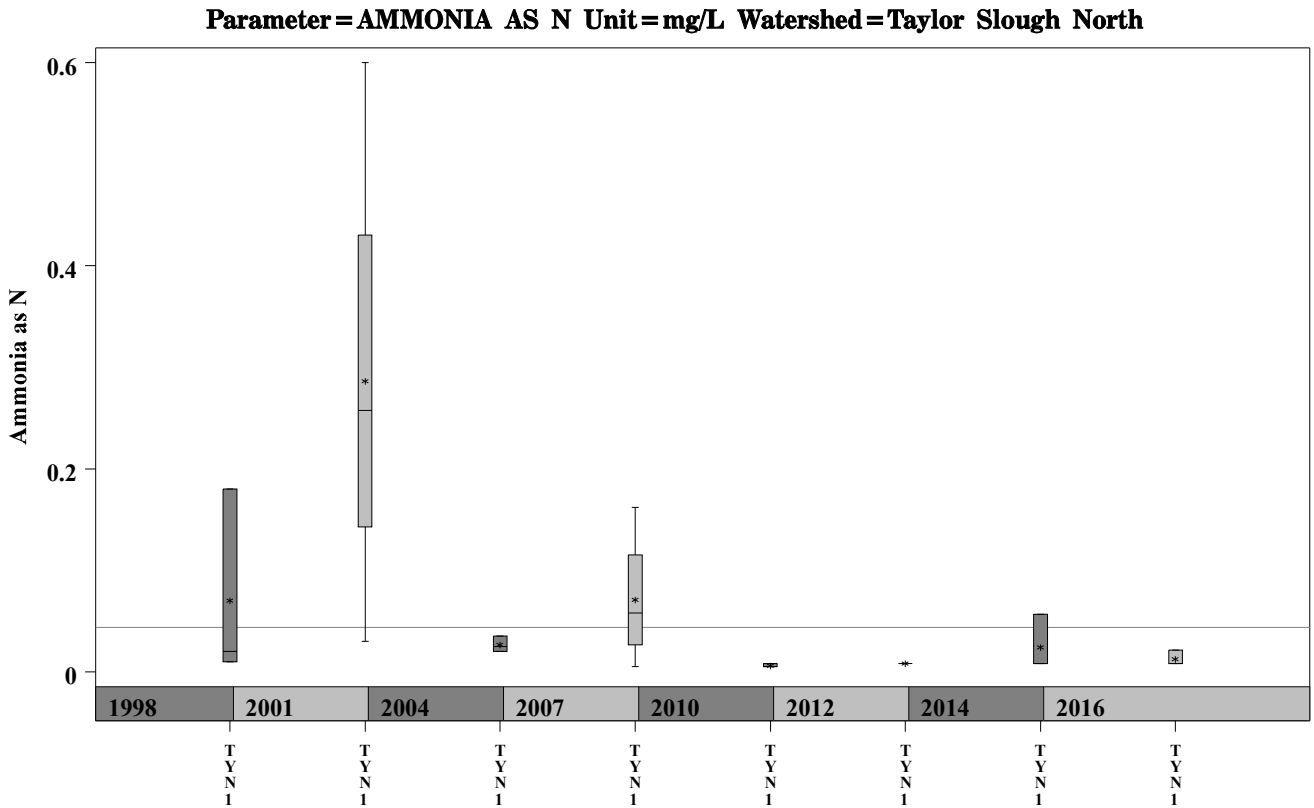


Parameter = CONDUCTIVITY Unit = uS/cm Watershed = Taylor Slough North



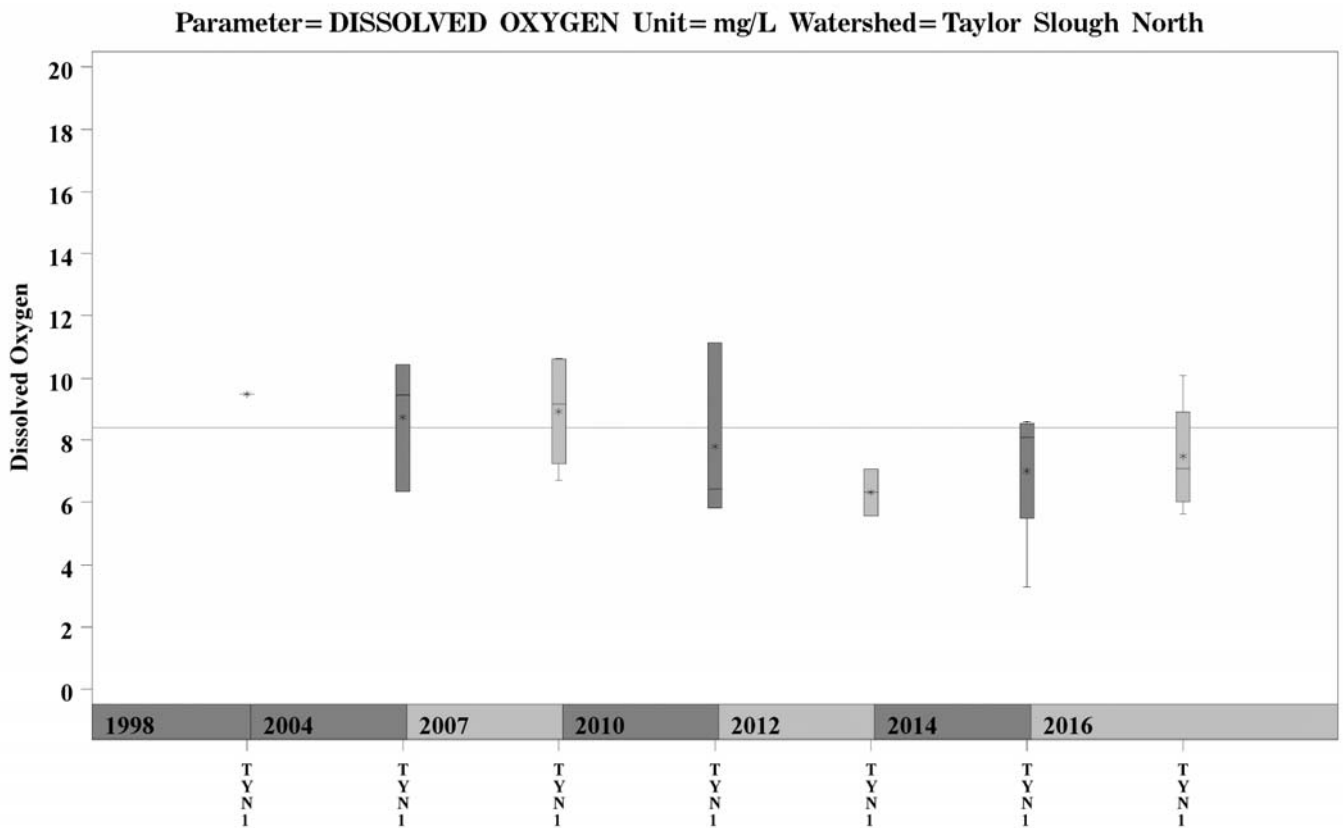
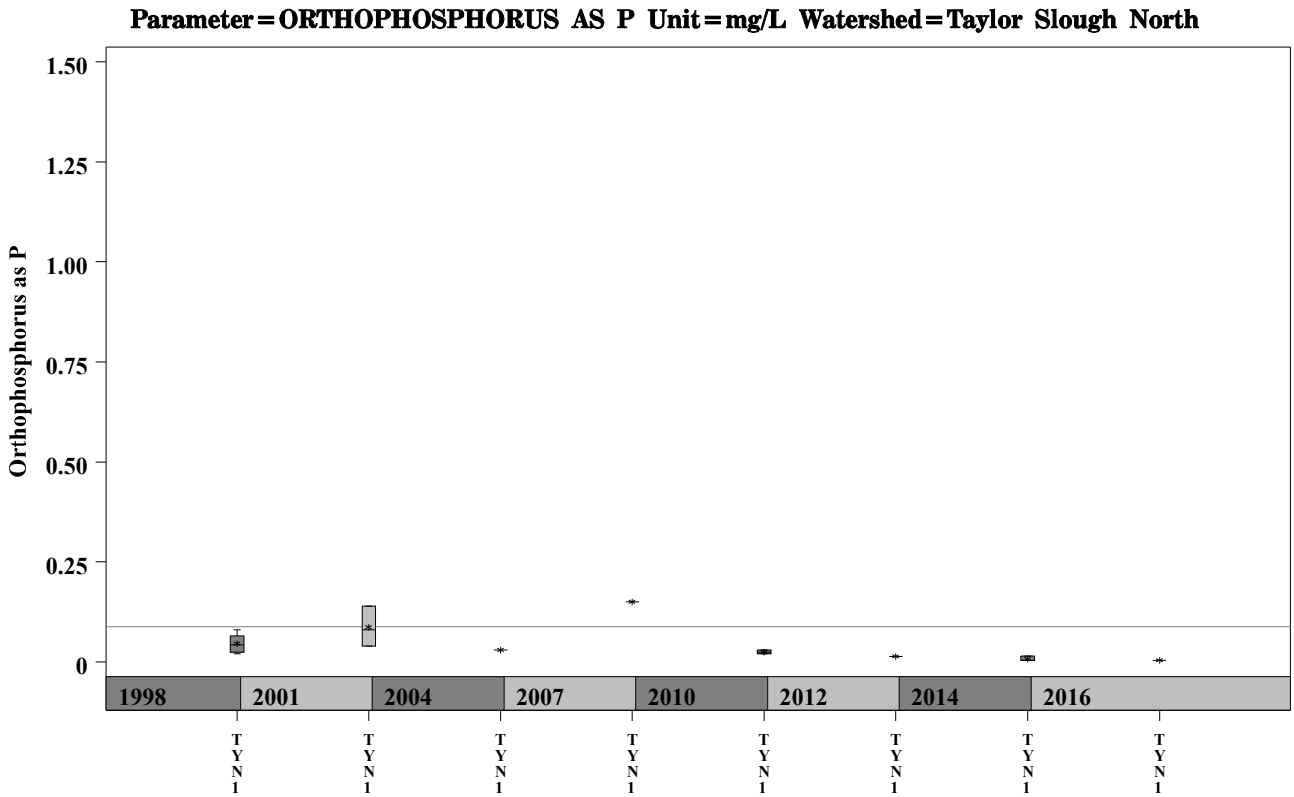
Taylor Slough North Watershed

Data Summary Graphs – Ammonia and Nitrate/Nitrite (Downstream to Upstream by Year)



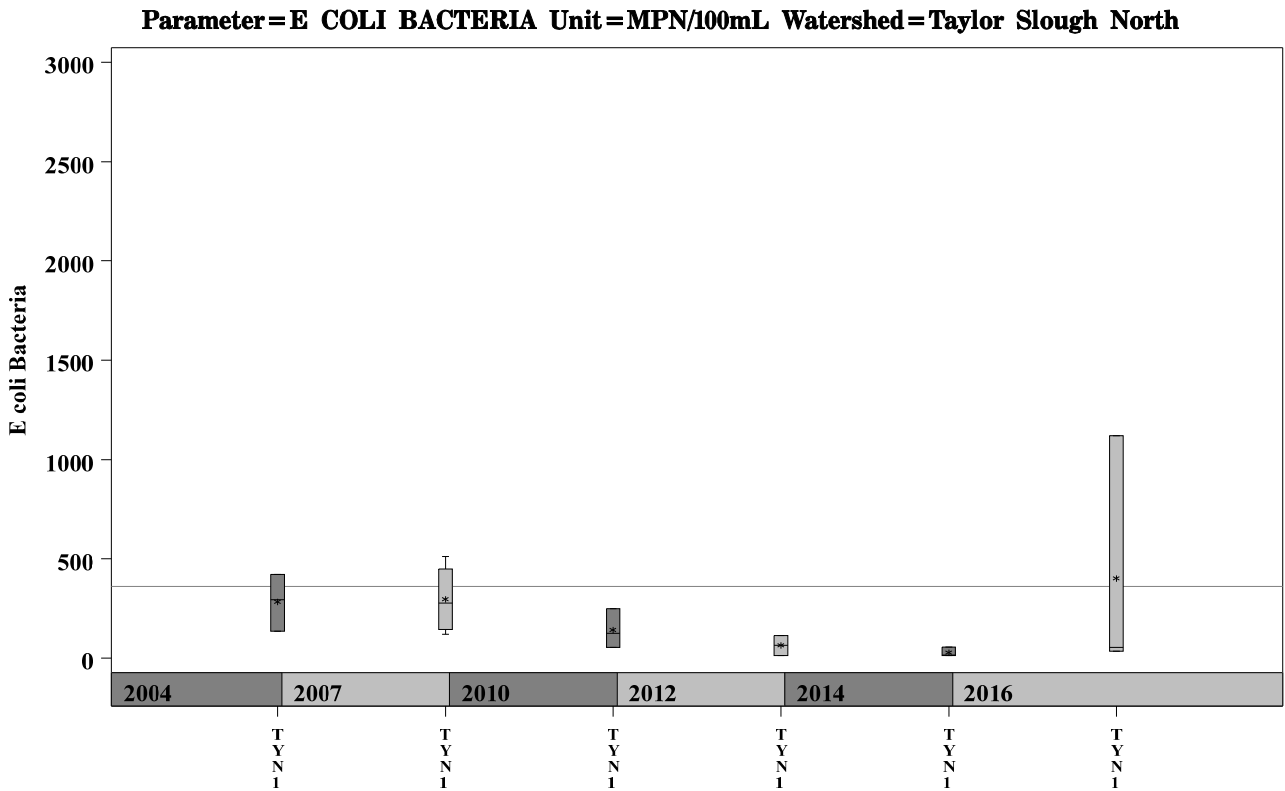
Taylor Slough North Watershed

Data Summary Graphs – Orthophosphate and Dissolved Oxygen (Downstream to Upstream by Year)



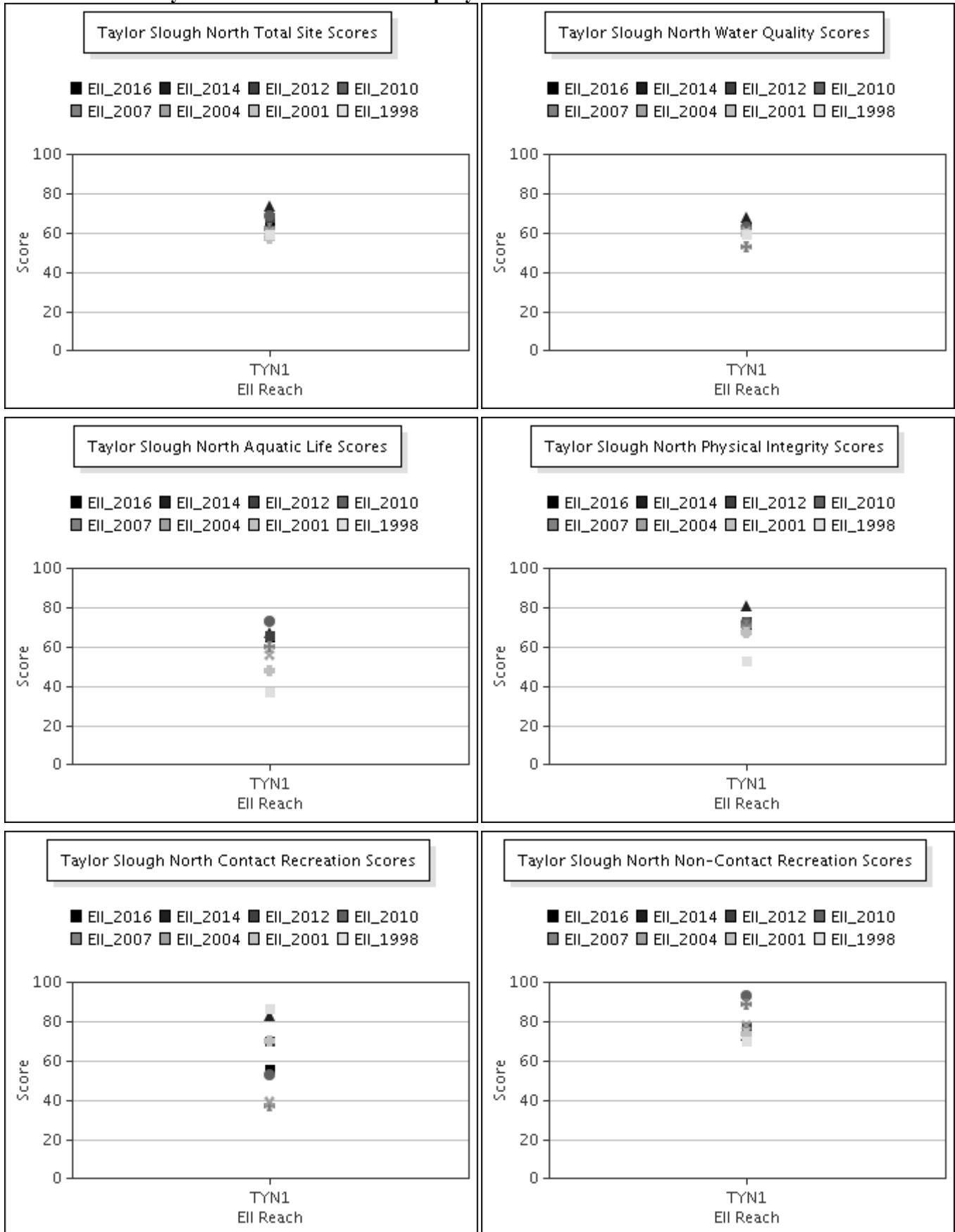
Taylor Slough North Watershed

Data Summary Graphs – *E.coli* (Downstream to Upstream by Year)



Taylor Slough North Watershed

Score Summary – Reach scores for each sample year



Taylor Slough North Watershed

Benthic Macroinvertebrates – Taxa List, Pollution Tolerance Index & Functional Feeding Group for 2016 Sample Sites (Downstream to Upstream)

Benthic Macroinvertebrates - Taylor Slough North			TYN @ Mayfield Pk (3969) 06/22/2016
Benthic Macroinvertebrate ID	PTI	FFG	(WRE)
Chimarra	2	FC	13
Fallceon	4	CG,SC	58
Argia	6	P	23
Cheumatopsyche	6	FC	15
Rhagovelia	6	P	2
Tanypodinae	6	P	2
Stenelmis	7	CG,SC	2
Dugesia		CG,P	39

Taylor Slough North Watershed

Site Photographs



177_t00-us-05_17_2004



177_t00-ds-05_17_2004



177_t00-ur-05_17_2004



1091_t00-ur-05_17_2004



1091_t00-us-05_17_2004

Taylor Slough North Watershed

Site Photographs



3969_ds_06_18_2007



3969_ur_06_18_2007



3969_us_06_18_2007



3969_00-us-05_17_2010



3969_00-ur-05_17_2010



3969_00-ds-05_17_2010