

# Little Bee Creek Watershed

## Summary Sheet

Catchment	Total area	1.2 sq. miles				
	Area in recharge	0.42 sq. miles				
	Creek length	2 miles				
	Receiving water	Town Lake				
Demographics	2000 population	665				
	2030 projected population	2,941				
	30 year projected % increase	342 %				
Land Use	Impervious cover (2003 estimate)	18.1 %				
	Impervious cover (2013 estimate)	17.5 %				
Overall EII Scores	2001	2004	2007	2010	2012	2014
	64	47	48	51		

Featured Watershed  
 Phase I Watersheds  
 Other Phase II Watersheds

### Flow Regime\* for Sample Sites on Little Bee Creek

Site	Site Name	1999		2001				2004					2007				2010					
		Jan	Jan	Mar	Mar	Jun	Sep	Mar	May	Jun	Oct	Dec	Feb	May	Jun	Sep	Dec	Mar	May	May	Oct	
		WQ	Bio	WQ	Bio	WQ	WQ	WQ	WQ	WQ	WQ	WQ	WQ	WQ	Bio	WQ	WQ	WQ	WQ	Bio	WQ	
272	Laurel Valley	B	B	B	B	n	B															
1105	Red Bud Trl	n	n	B	B	B	n	B	n	n	n	n	B	B	n	n	n	n	n	n	n	n

\* B = baseflow    n = no flow    S = storm flow    blue = Samples were taken    light blue = Samples were not taken    blank = not visited

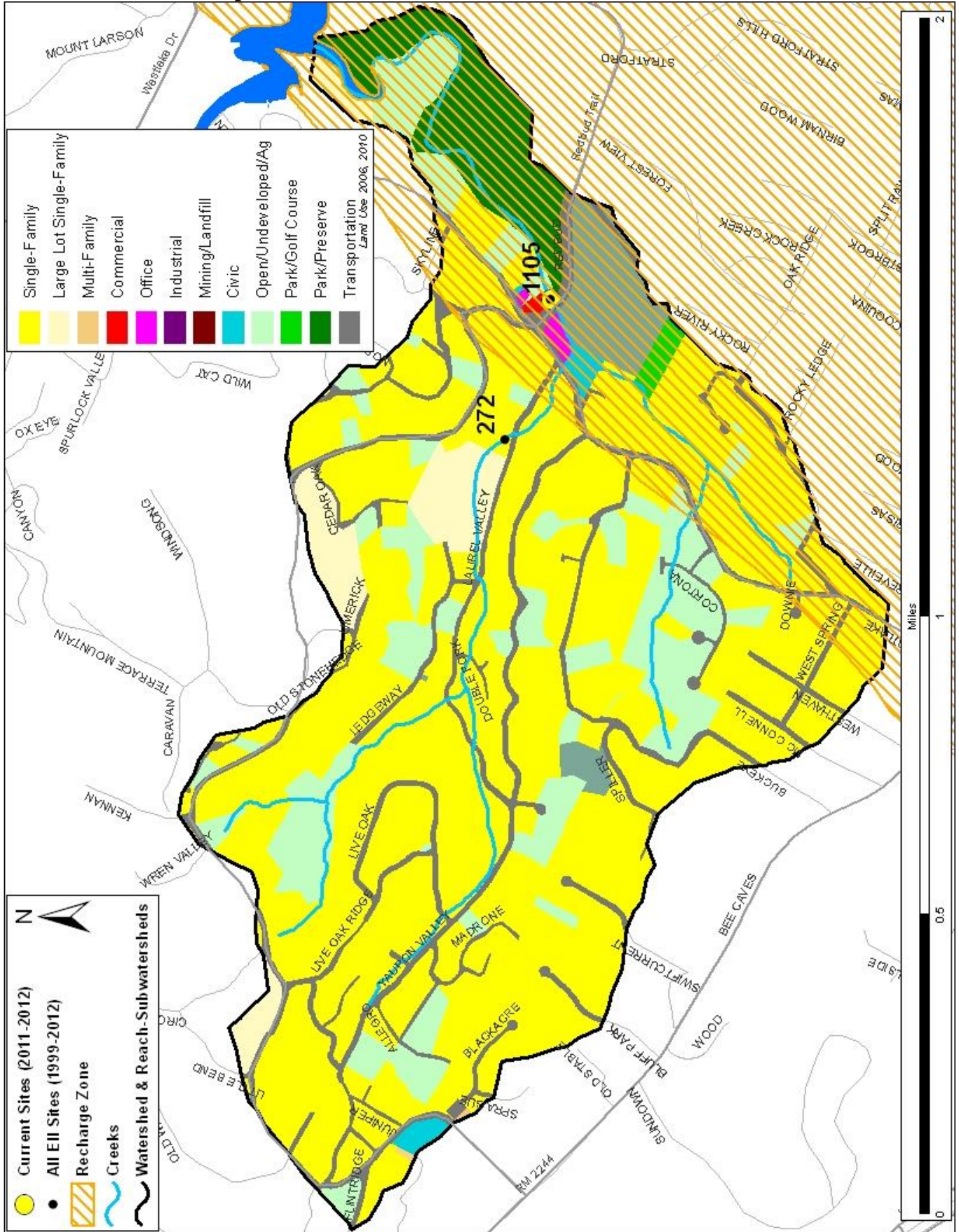
### Index scores\* for Little Bee Creek by Year

Reach	Site	Site Name	Year	Water Quality	Sediment**	Contact Rec.	Non-Contact Rec.	Physical Integrity	Aquatic Life	Benthic subindex	Diatom subindex	Total EII Score
LBE1	272	Little Bee Creek @ Laurel Valley Rd	1998	54	93	88	72	55	34	28	40	66
LBE1	1105	Little Bee Creek @ Red Bud Trail	1998	46	93	95	53	53				57
LBE1	272	Little Bee Creek @ Laurel Valley Rd	2001	48	70	73	80	70	56	43	68	64
LBE1	1105	Little Bee Creek @ Red Bud Trail	2001	44	70	84	88	46	41	31	51	61
LBE1	1105	Little Bee Creek @ Red Bud Trail	2004	47	73	58	45	61				47
LBE1	1105	Little Bee Creek @ Red Bud Trail	2007	36	75	71	53	53				48
LBE1	1105	Little Bee Creek @ Red Bud Trail	2010		53		88	63				51

\* blank cells indicate parameter was not collected, blank row indicate site was dropped    \*\*sediment samples only collected at the downstream site  
100-87.5 Excellent    87.5-75 V. Good    75-62.5 Good    62.5-50 Fair    50-37.5 Marginal    37.5-25 Poor    25-12.5 Bad    12.5-0 V. Bad

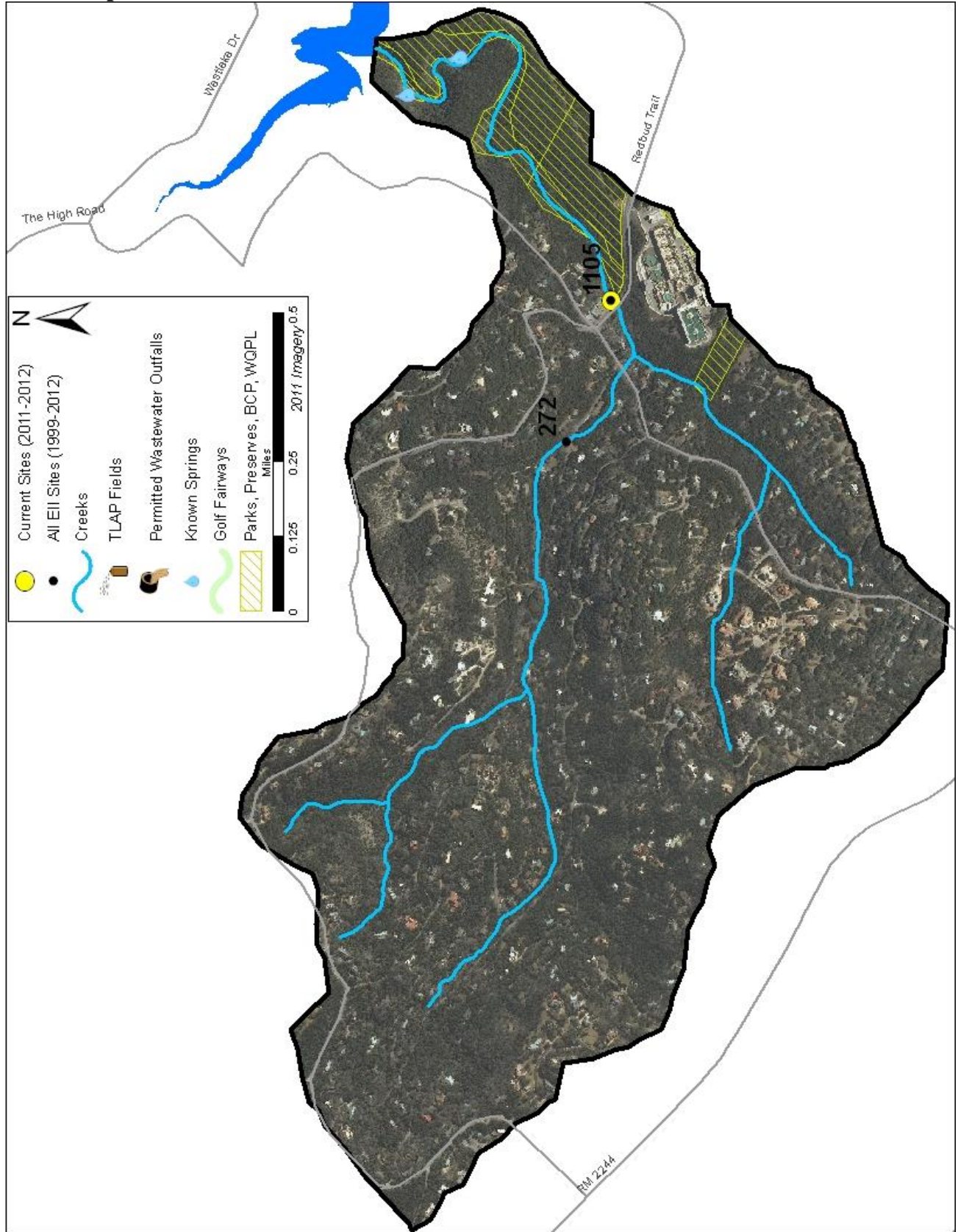
# Little Bee Creek Watershed

## Land Use Map



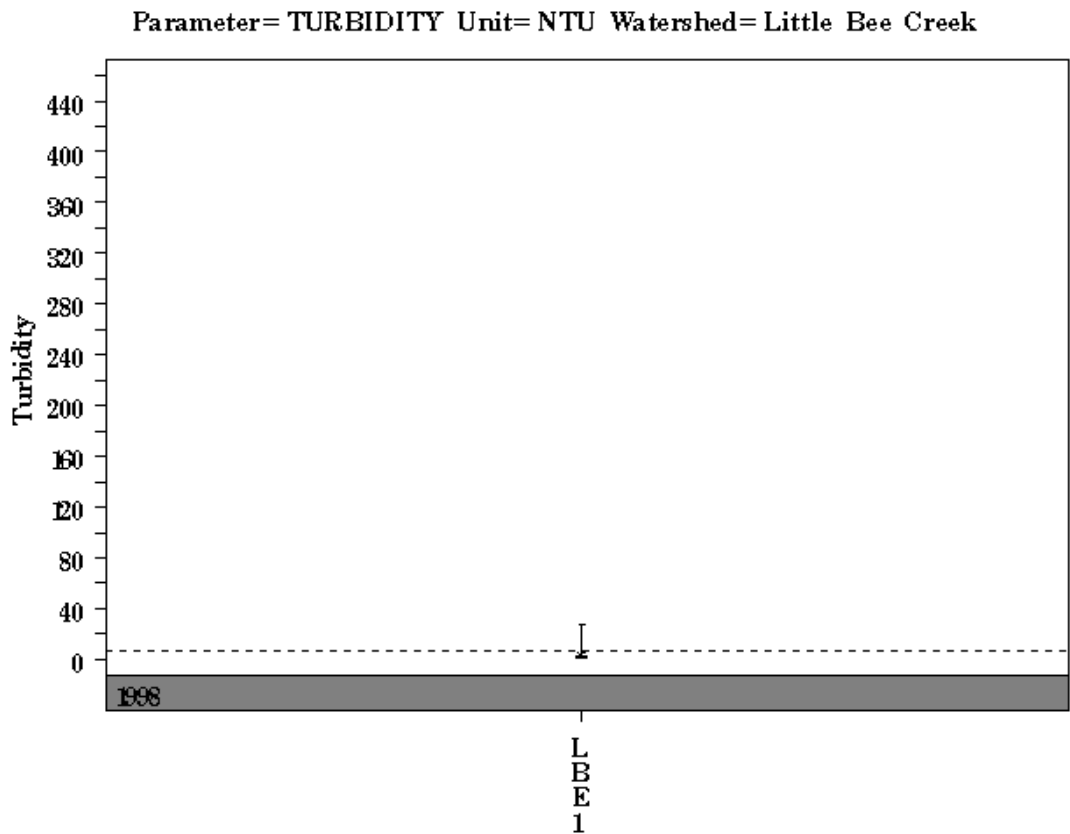
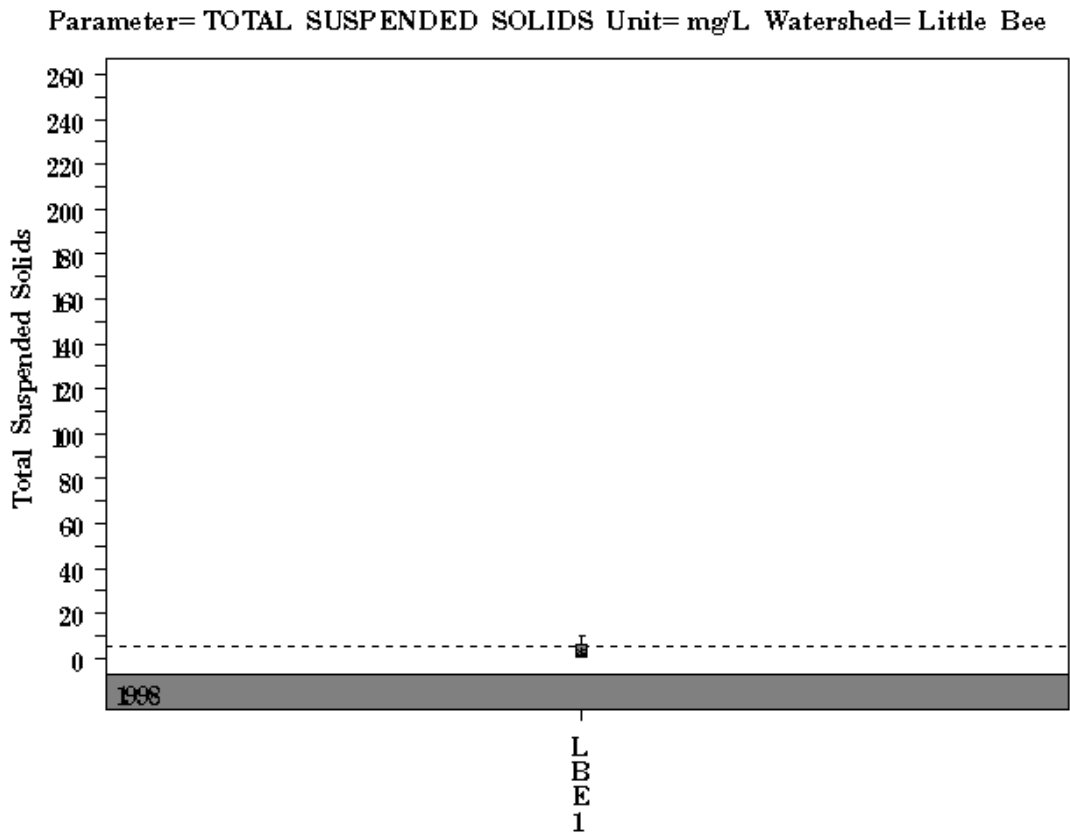
# Little Bee Creek Watershed

## Aerial Map



# Little Bee Creek Watershed

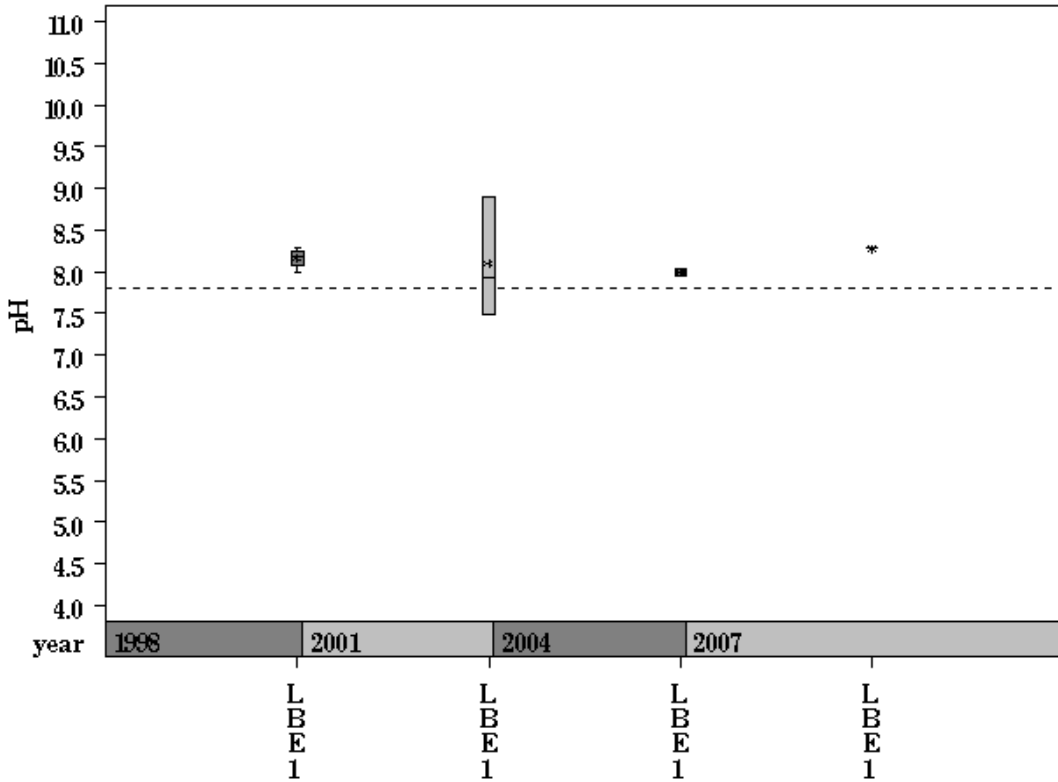
Data Summary Graphs – Total Suspended Solids and Turbidity (Downstream to Upstream by Year)



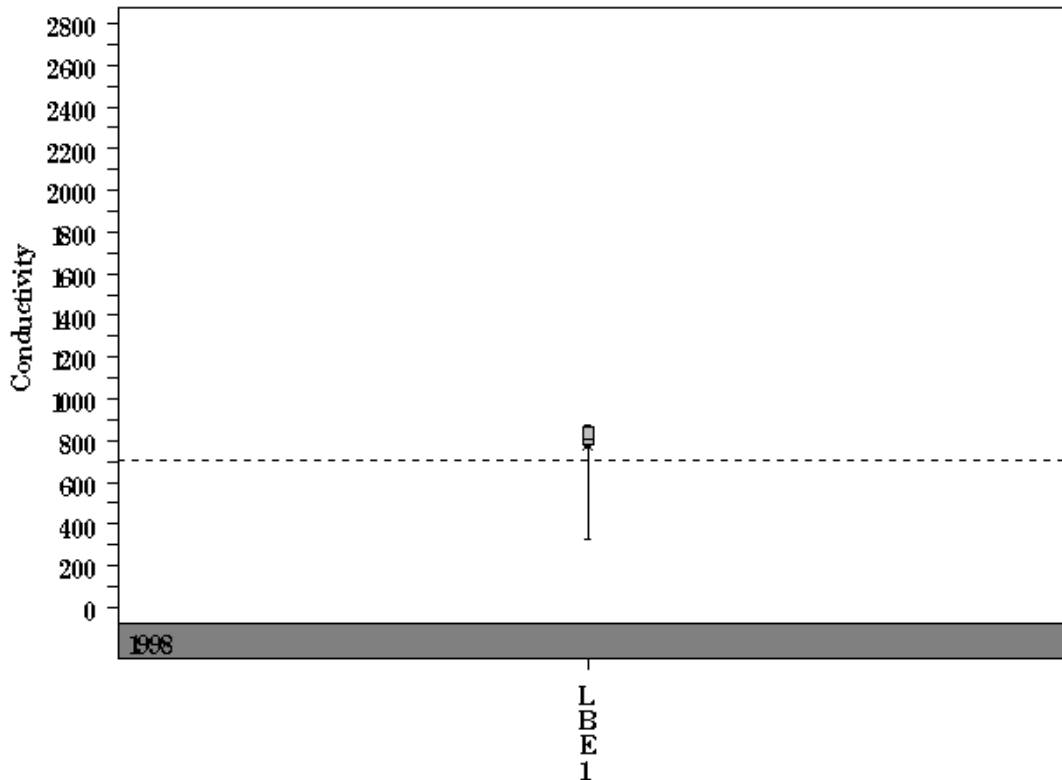
# Little Bee Creek Watershed

Data Summary Graphs – pH and Conductivity (Downstream to Upstream by Year)

Parameter= PH Unit= Standard units Watershed= Little Bee

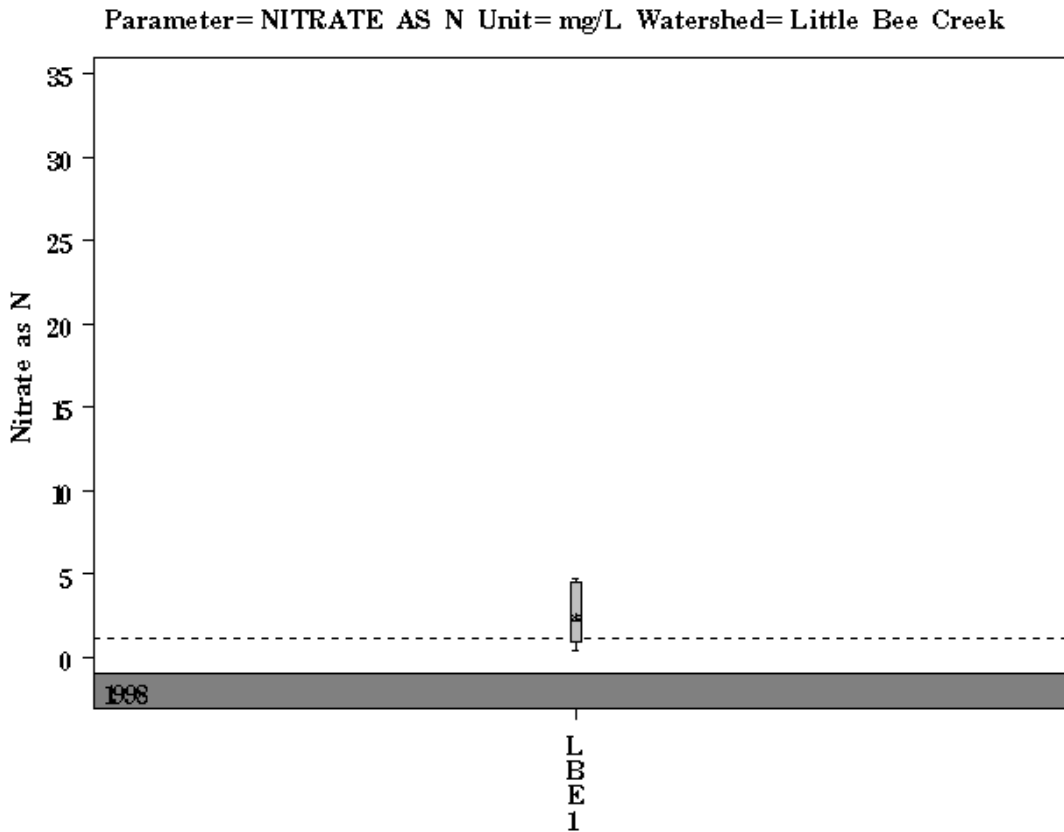
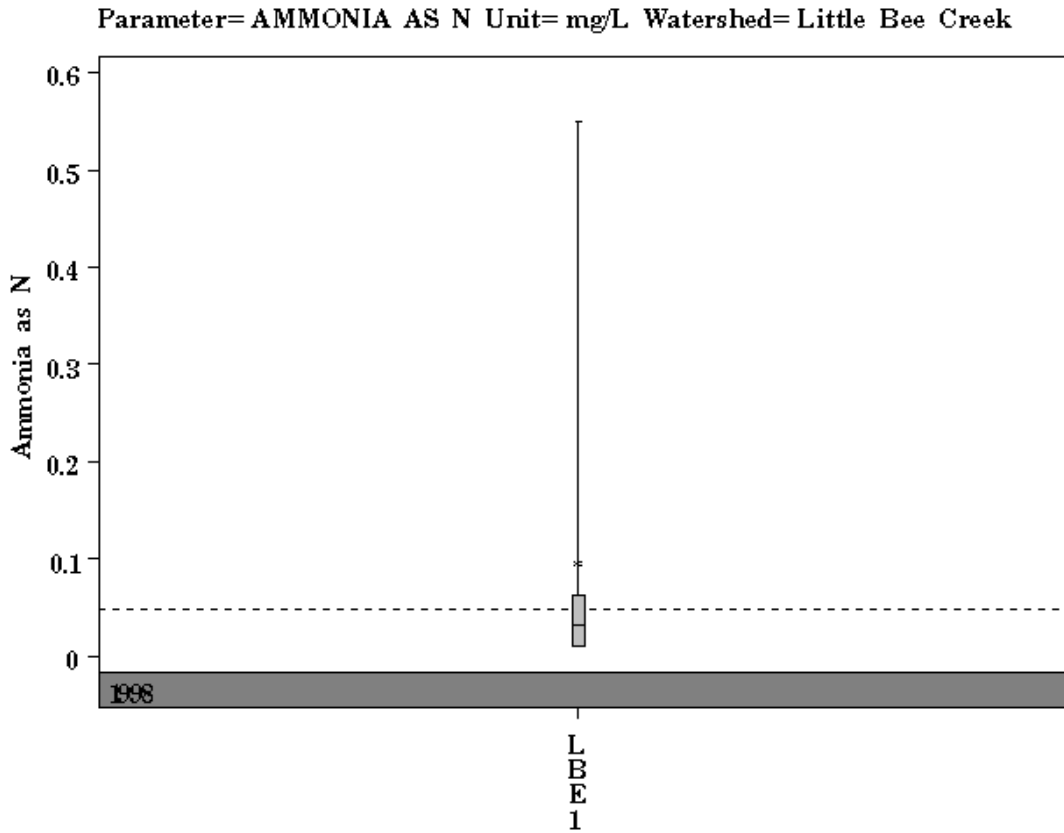


Parameter= CONDUCTIVITY Unit= uS/cm Watershed= Little Bee Creek



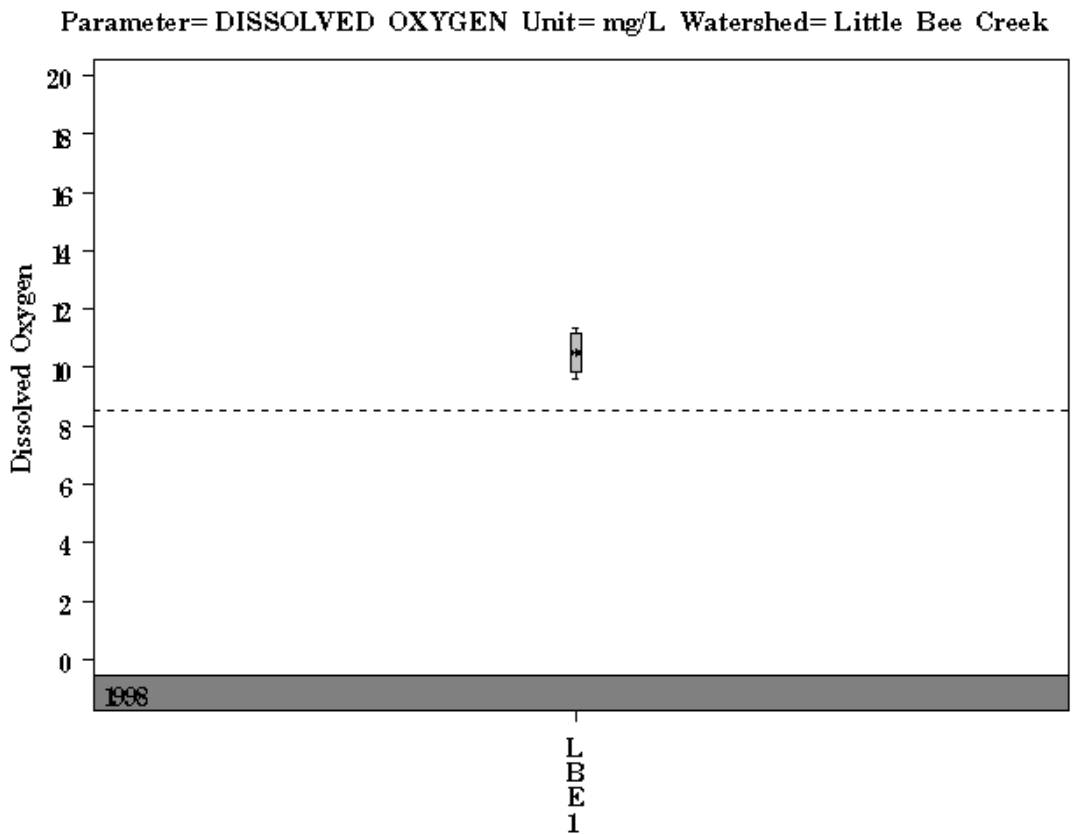
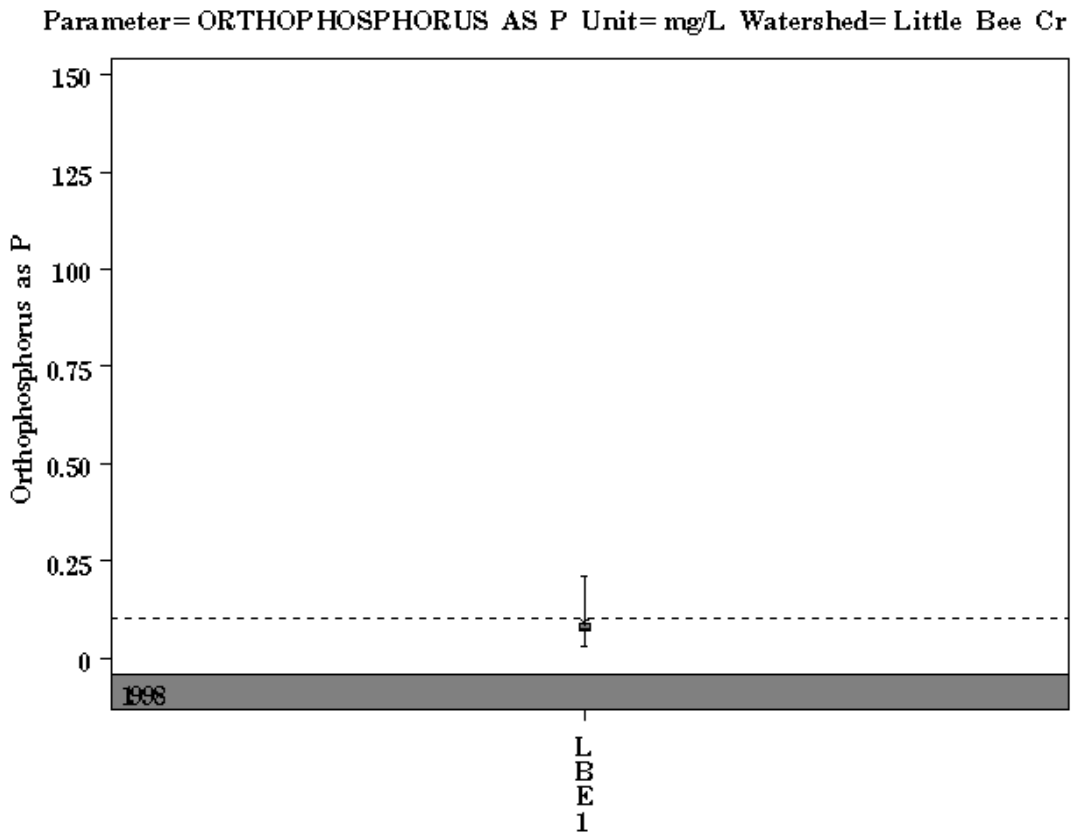
# Little Bee Creek Watershed

Data Summary Graphs – Ammonia and Nitrate/Nitrite (Downstream to Upstream by Year)



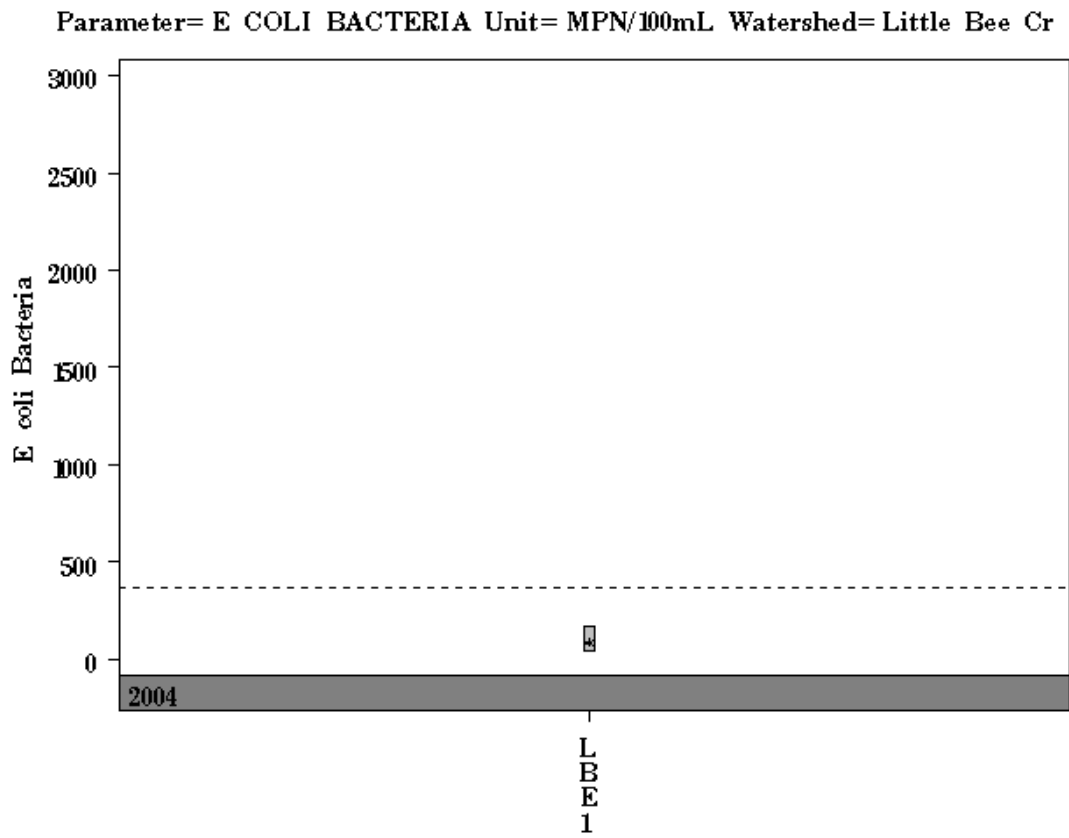
# Little Bee Creek Watershed

Data Summary Graphs – Orthophosphate and Dissolved Oxygen (Downstream to Upstream by Year)



# Little Bee Creek Watershed

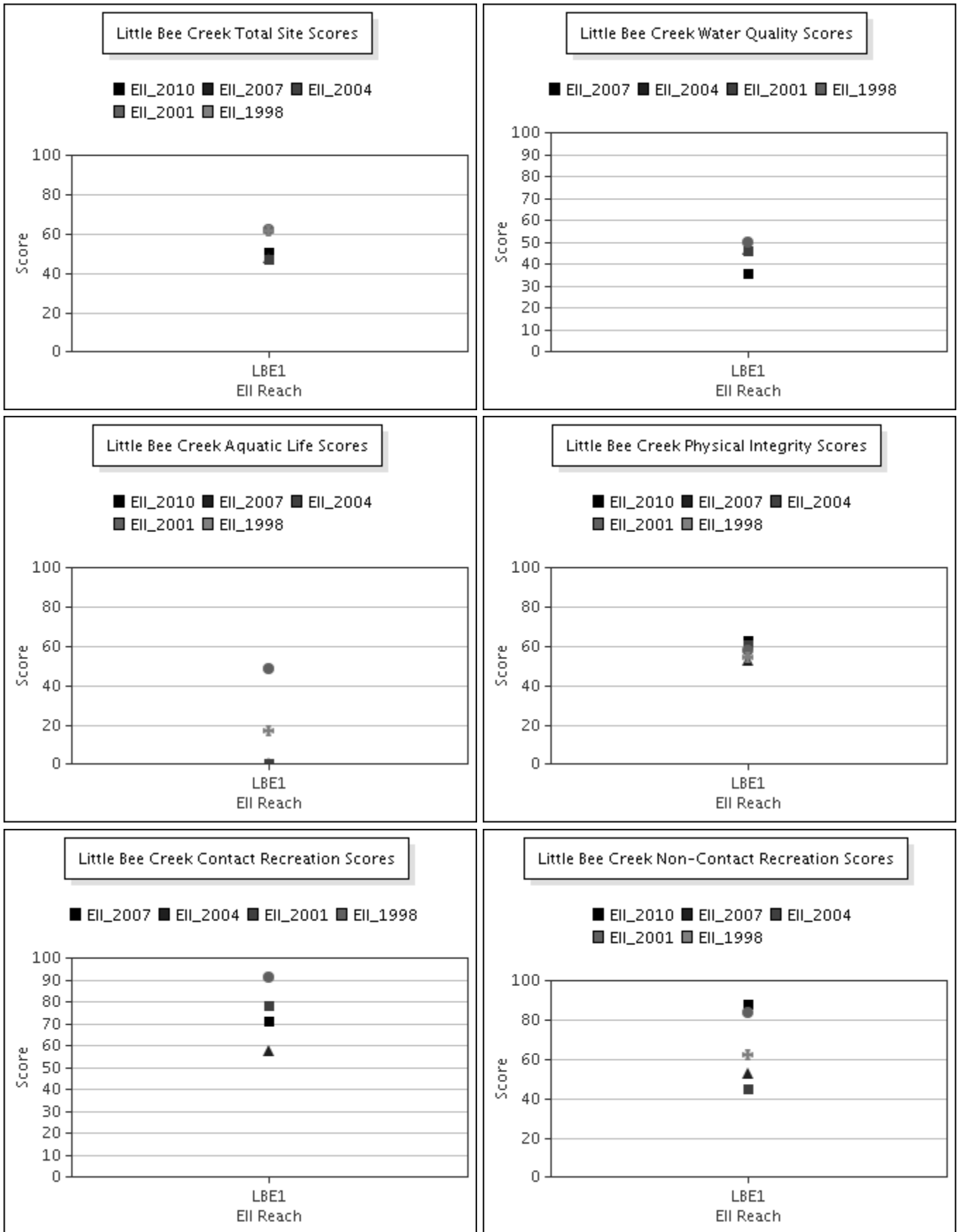
Data Summary Graphs – *E.coli* (Downstream to Upstream by Year)





# Little Bee Creek Watershed

## Score Summary – Reach scores for each sample year

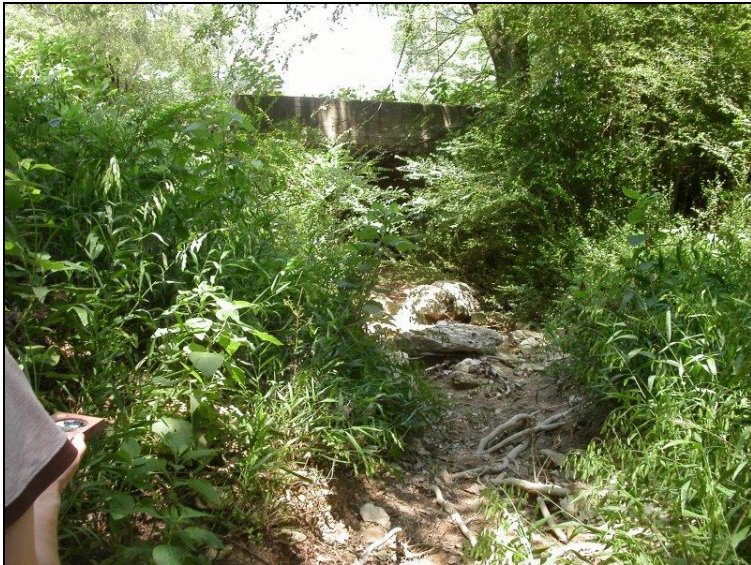


# Little Bee Creek Watershed

## Site Photographs



1105\_us\_06\_18\_2007



1105\_ur\_06\_18\_2007



1105\_ds\_06\_18\_2007

# Little Bee Creek Watershed

## Site Photographs



1105\_00-us-05\_17\_2010



1105\_00-ur-05\_17\_2010



1105-dt-03\_04\_2010

This page left intentionally blank