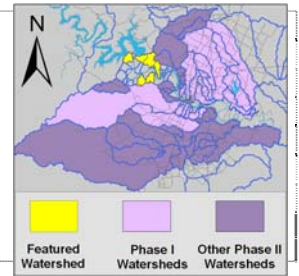


Lake Austin Tributaries

Catchment	Total area	24 sq. miles				
	Area in recharge	0				
	Creek length	26 miles				
Demographics	Receiving water	Town Lake				
	2000 population	23,303				
	2030 projected population	78,558				
Land Use	Impervious cover	unknown				
Overall EII Scores	1999	2002	2005	2008	2010	2012
	81	82	68	61	80	76



Flow Regime* for Sample Sites on Lake Austin Tributaries

Site #	Site Name	2005					2008					2010				2011	2012		
		Mar	Jun	Jun	Sep	Dec	Feb	May	Jun	Sep	Dec	Mar	May	May	Oct	Dec	Mar	May	Jul
		WQ	WQ	Bio	WQ	WQ	WQ	WQ	Bio	WQ	WQ	WQ	WQ	Bio	WQ	WQ	WQ	Bio	WQ
1224	BRW @ Fritz Hughes	B	B	B	B	B	B	B	n	B	B	B	B	B	B	B	B	B	B
1048	CMF in CF Metro Pk	B	B	n	n	n	B	B	n	B	n	B	B	B	B	B	B	B	B
1222	CRN @ River Hills	B	n	n	n	n	n	n	n	n	n	B	B	B	B	B	B	B	B
1223	PAN @ Big View	B	B	B	n	n	B	B	n	n	n	B	B	B	B	B	B	B	n
316	RDR @ Running Deer Trl	B	B	B	n	B	B	B	B	B	B	B	B	B	B	B	B	B	n
1221	TRK @ City Pk	B	B	B	n	n	B	n	n	n	n	B	B	B	B	n	B	B	n

* B = baseflow n = no flow storm = storm flow blue = Samples were taken grey = Samples were not taken blank = site not visited

Summary of 2010 Data for Lake Austin Tributaries

Summary	Parameter	Mean	Max	Min	Discussion
Physicochemical	D.O. mg/l	8.5	10.7	3.8	Generally above average values with both high and low values at site 1224.
	pH st.units	7.77	8.06	7.00	Mostly within normal range with a few low values.
	Cond uS/cm	781	960	551	Generally within normal range.
Nutrients	NH ₃ mg/l	0.017	0.081	0.008	Mostly below average values with one high reading at site 1222.
	NO ₃ mg/l	2.731	5.300	0.011	Several above average readings with a high reading at site 1222.
	Ortho P mg/l	0.004	0.004	0.004	Consistently low.
Sediment Load	TSS mg/l	2.4	27.1	1.0	Mostly below average with one extremely high reading at site 1224.
	Turbidity ntu	0.41	0.76	0.21	Consistently low.
Biology	E.Coli /100ml	64	128	20	Consistently low.

Index scores* for LA Tributaries by Year

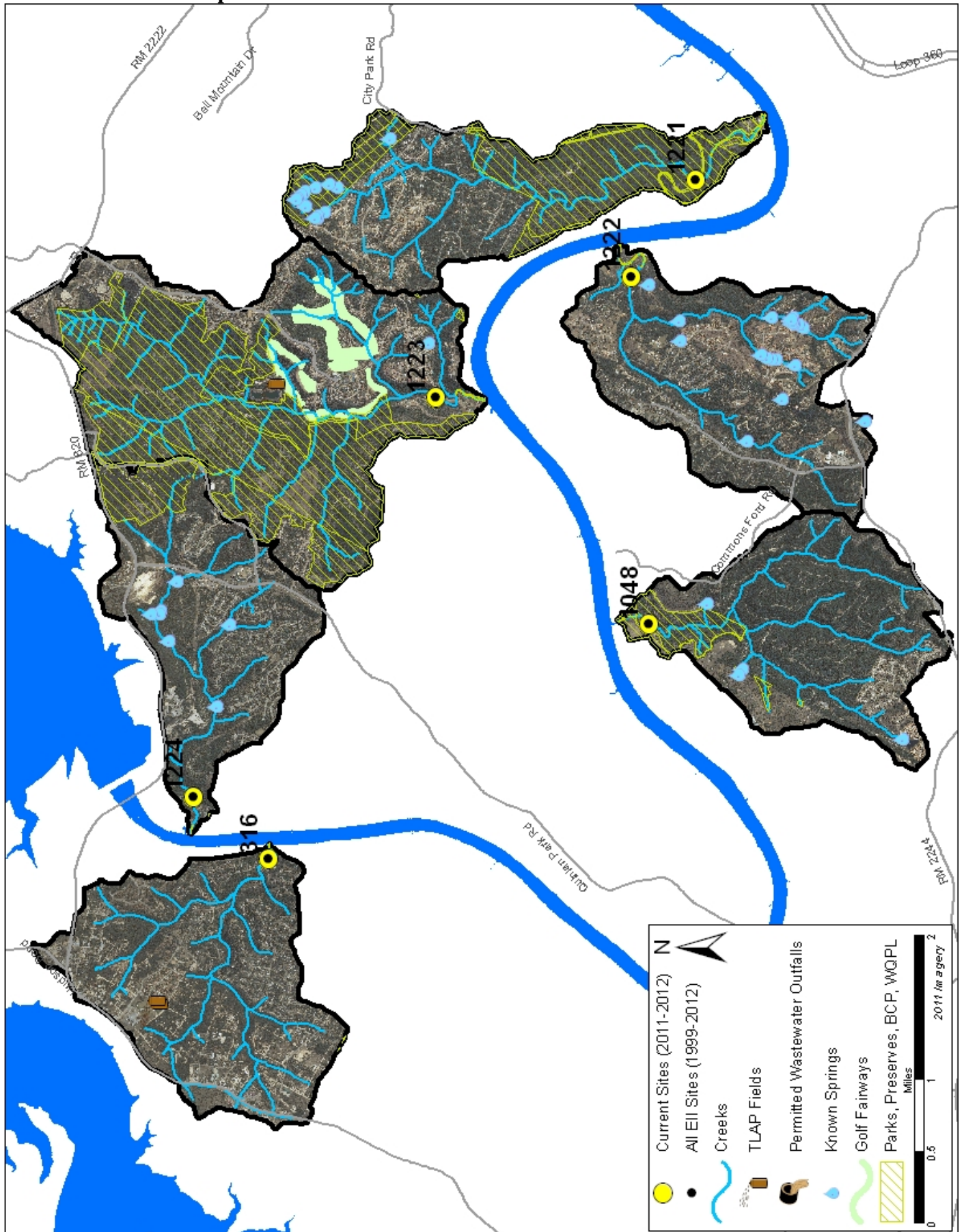
Reach	Site	Site Name	Year	Water Quality	Sediment**	Contact Rec.	Non-Contact Rec.	Physical Integrity	Aquatic Life	Benthic subindex	Diatom subindex	Total EII Score
BRW1	1224	Bear Creek (West) @ Fritz Hughes Park Rd	1999	79	94	95	97	79	48	37	64	82
RDR1	316	Deer @ Running Deer Trail (AST)	1999	75	90	97	91	79	54	38	70	81
CMF1	1048	Commons Ford Trib - Common Ford Metro Pk	1999	90	93	99	93	80	56	52	59	85
PAN1	1223	Panther Hollow Creek @ Big View Road	1999	72	94	89	89	79	67	76	58	82
CRN1	1222	Cuernavaca Creek @ River Hills Road	1999	55	93	89	82	84	45	17	72	75
TRK1	1221	Turkey Creek @ City Park Road	1999	81	92	89	97	85	56	51	60	83
BRW1	1224	Bear Creek (West) @ Fritz Hughes Park Rd	2002	65	92	95	89	72	82	68	96	83
RDR1	316	Deer @ Running Deer Trail (AST)	2002	62	94	92	97	76	75	63	87	83
CMF1	1048	Commons Ford Trib - Common Ford Metro Pk	2002	72	93	96	92	81	73	60	86	85
PAN1	1223	Panther Hollow Creek @ Big View Road	2002	68	76	98	85	74	81	69	93	80
CRN1	1222	Cuernavaca Creek @ River Hills Road	2002	56	91	86	83	71	64	42	85	75
TRK1	1221	Turkey Creek @ City Park Road	2002	76	85	97	100	81	61	55	67	83
BRW1	1224	Bear Creek (West) @ Fritz Hughes Park Rd	2005	70	82	56	89	63	80	63	97	73
RDR1	316	Deer @ Running Deer Trail (AST)	2005	66	90	46	86	55	73	73		69
CMF1	1048	Commons Ford Trib - Common Ford Metro Pk	2005	73	88	69	69	56				59
PAN1	1223	Panther Hollow Creek @ Big View Road	2005	76	89	79	69	60	90	79	100	77
CRN1	1222	Cuernavaca Creek @ River Hills Road	2005	50	89	25	81	61				51
TRK1	1221	Turkey Creek @ City Park Road	2005	75	87	86	87	68	80	60	100	81
BRW1	1224	Bear Creek (West) @ Fritz Hughes Park Rd	2008	65	86	80	71	75	69	69		74
RDR1	316	Deer @ Running Deer Trail (AST)	2008	69	84	45	84	52	93	88	98	71
CMF1	1048	Commons Ford Trib - Common Ford Metro Pk	2008	59	82	56	60	68				54
PAN1	1223	Panther Hollow Creek @ Big View Road	2008	59	86	70	48	76				57
CRN1	1222	Cuernavaca Creek @ River Hills Road	2008	57	83	25	63	61				48
TRK1	1221	Turkey Creek @ City Park Road	2008	61	85	49	69	81	65	65		63
BRW1	1224	Bear Creek (West) @ Fritz Hughes Park Rd	2010	69	81	70	91	77	82	64	100	78
RDR1	316	Deer @ Running Deer Trail (AST)	2010	67	87	74	97	61	96	92	99	80
CMF1	1048	Commons Ford Trib - Common Ford Metro Pk	2010	78	86	87	81	60	96	91	100	81
PAN1	1223	Panther Hollow Creek @ Big View Road	2010	71	84	84	88	89	85	78	92	84
CRN1	1222	Cuernavaca Creek @ River Hills Road	2010	61	85	65	96	70	86	72	100	77
TRK1	1221	Turkey Creek @ City Park Road	2010	67	87	80	88	75	66	65	66	77
BRW1	1224	Bear Creek (West) @ Fritz Hughes Park Rd	2012	62	85	57	90	88	81	82	79	77
RDR1	316	Deer @ Running Deer Trail (AST)	2012	61	86	63	90	80	58	71	45	73
CMF1	1048	Commons Ford Trib - Common Ford Metro Pk	2012	66	85	83	91	80	97	93	100	84
PAN1	1223	Panther Hollow Creek @ Big View Road	2012	56	86	71	71	64	81	72	89	72
CRN1	1222	Cuernavaca Creek @ River Hills Road	2012	48	85	53	96	81	85	77	92	75
TRK1	1221	Turkey Creek @ City Park Road	2012	55	85	50	98	84	63	42	83	73

* blank cells indicate parameter was not collected, blank row indicate site was dropped **sediment samples only collected at the downstream site

100-87.5 Excellent 87.5-75 V. Good 75-62.5 Good 62.5-50 Fair 50-37.5 Marginal 37.5-25 Poor 25-12.5 Bad 12.5-0 V. Bad

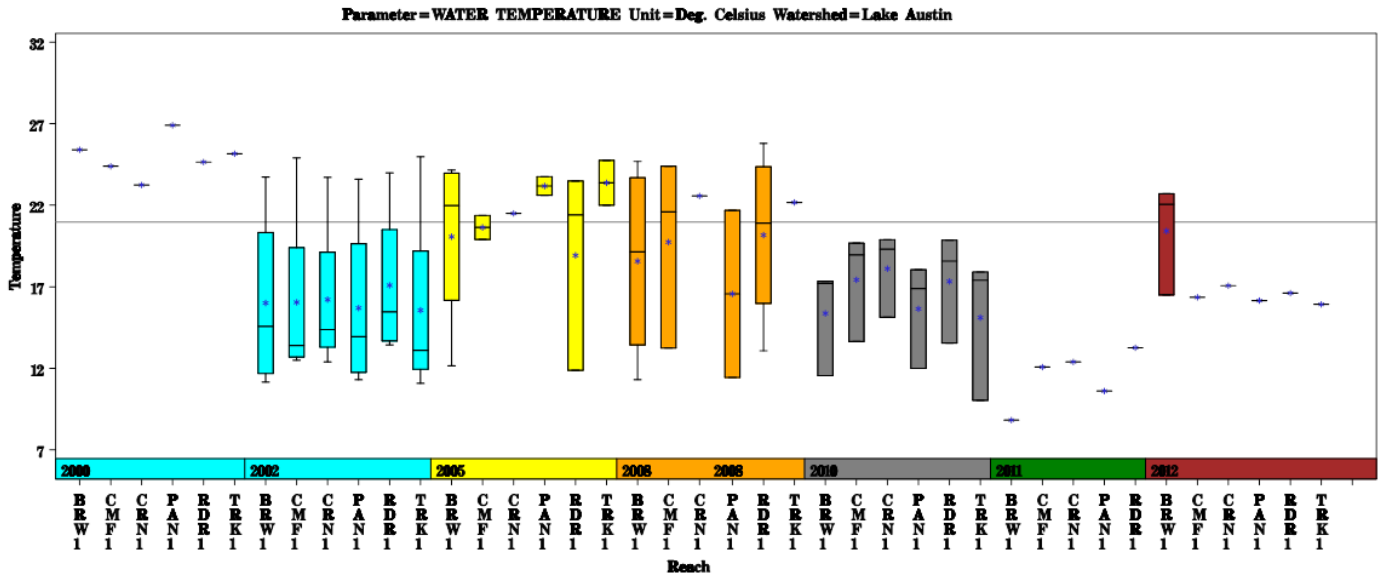
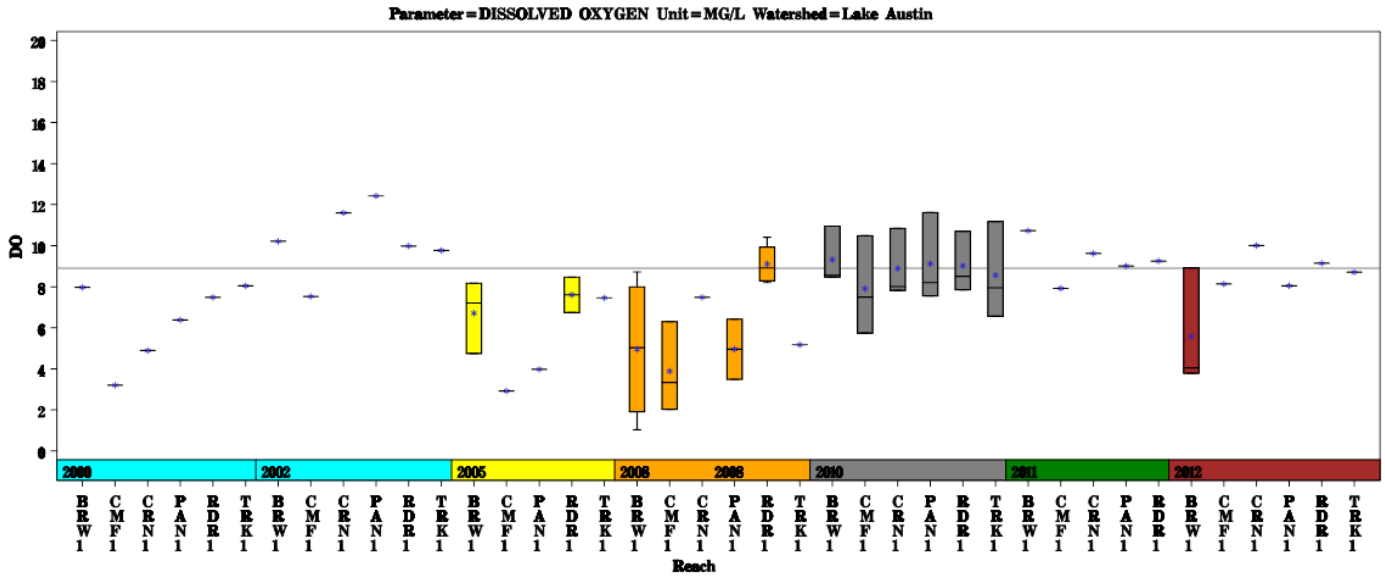
Lake Austin Tributaries

Aerial Map



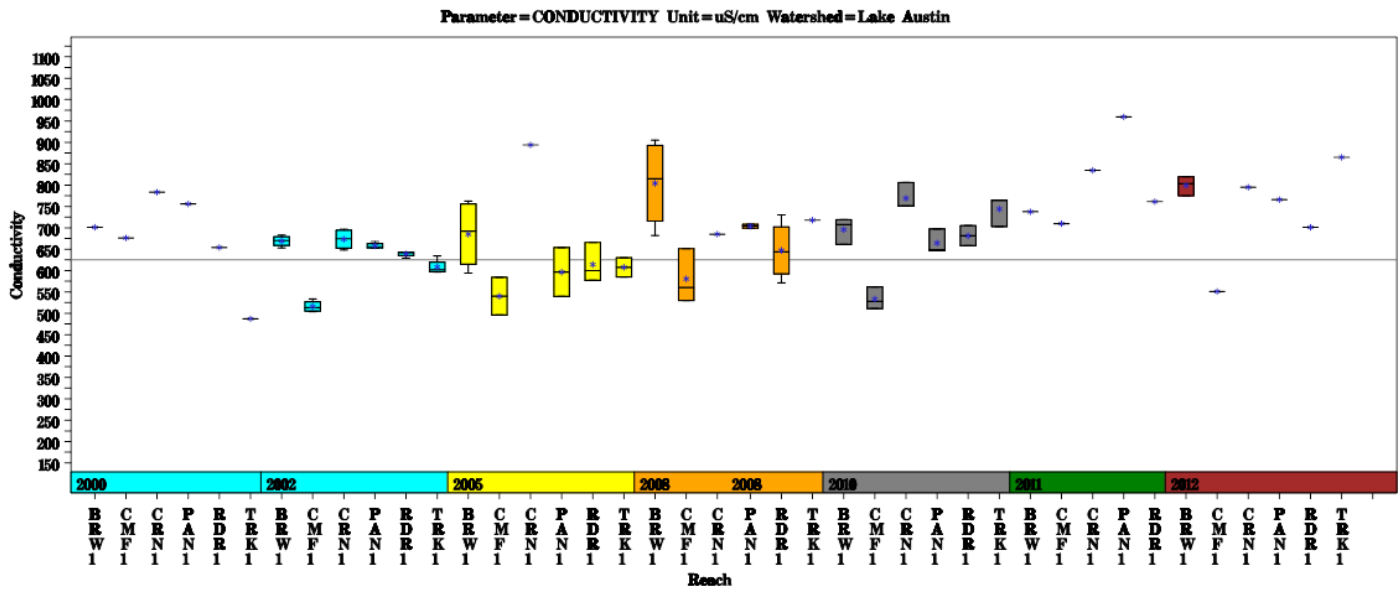
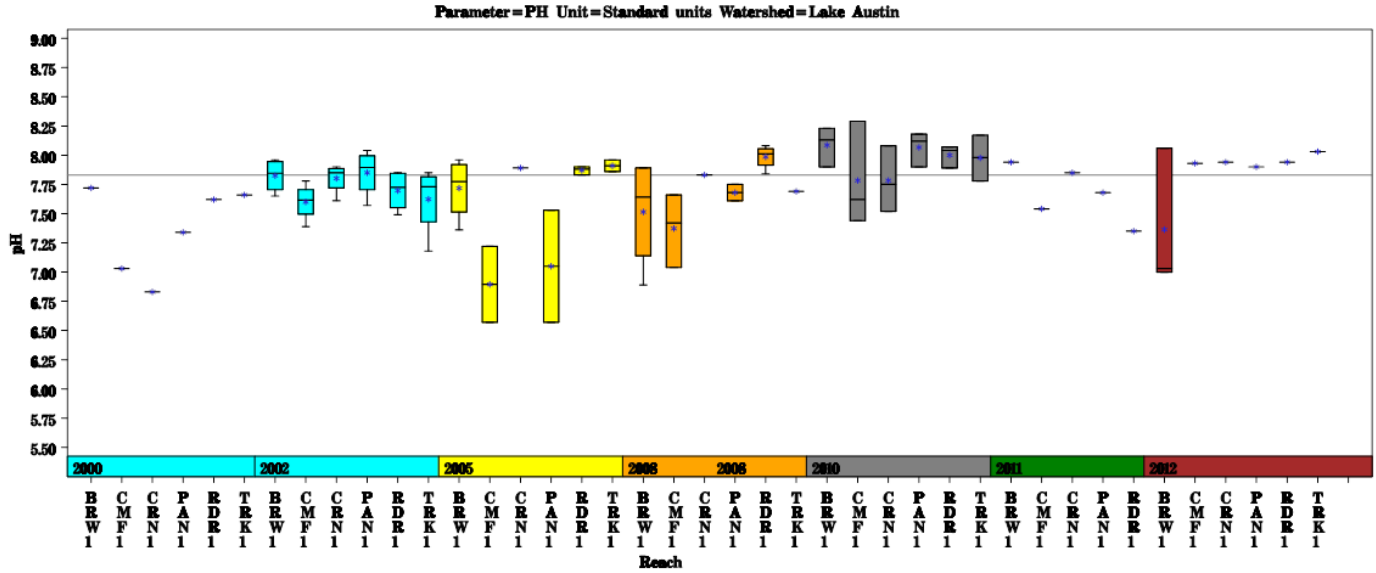
Lake Austin Tributaries

Data Summary Graphs – Dissolved Oxygen and Temperature (Downstream to Upstream by Year)



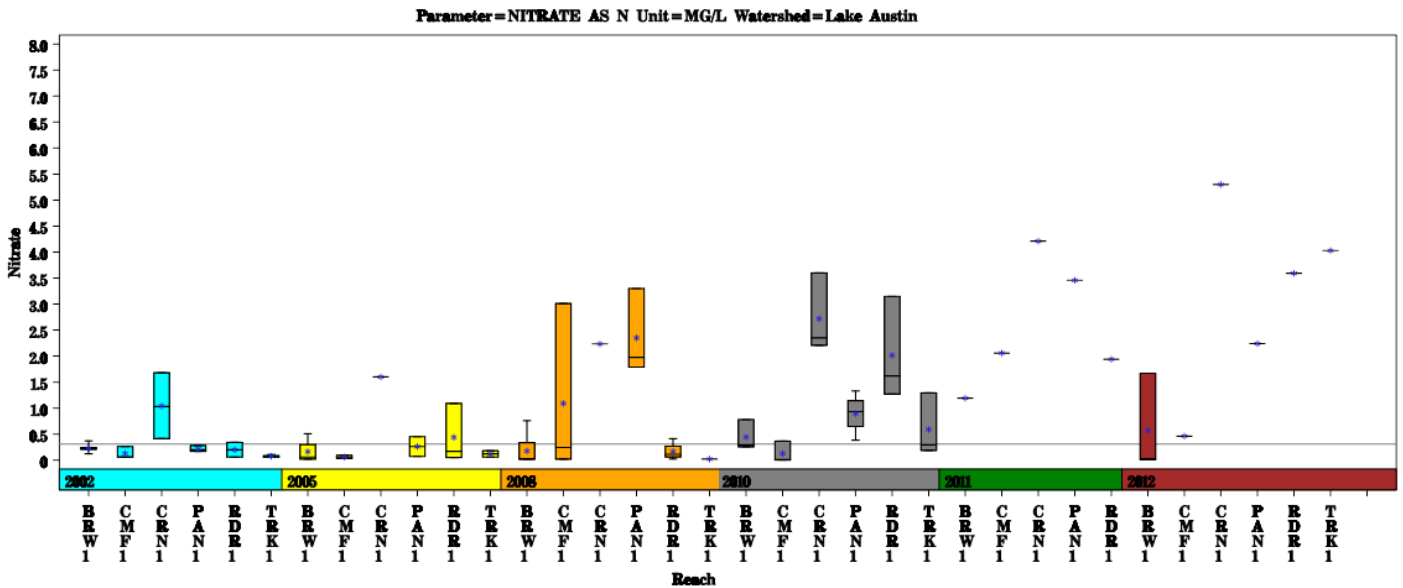
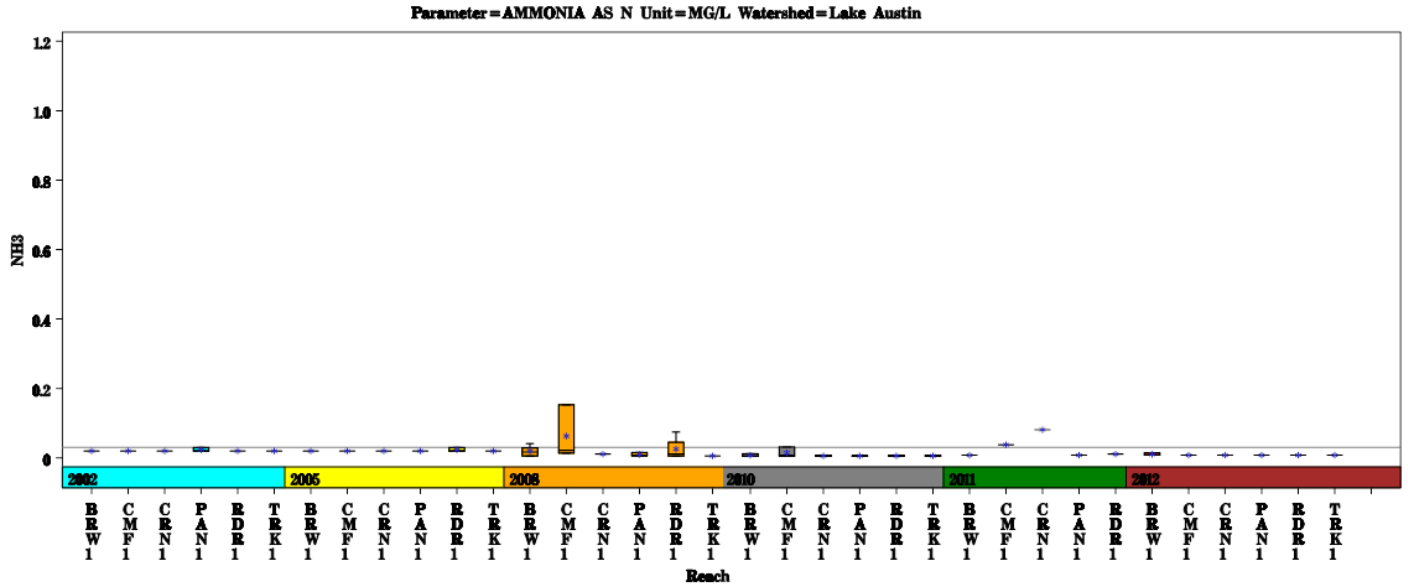
Lake Austin Tributaries

Data Summary Graphs – pH and Conductivity (Downstream to Upstream by Year)



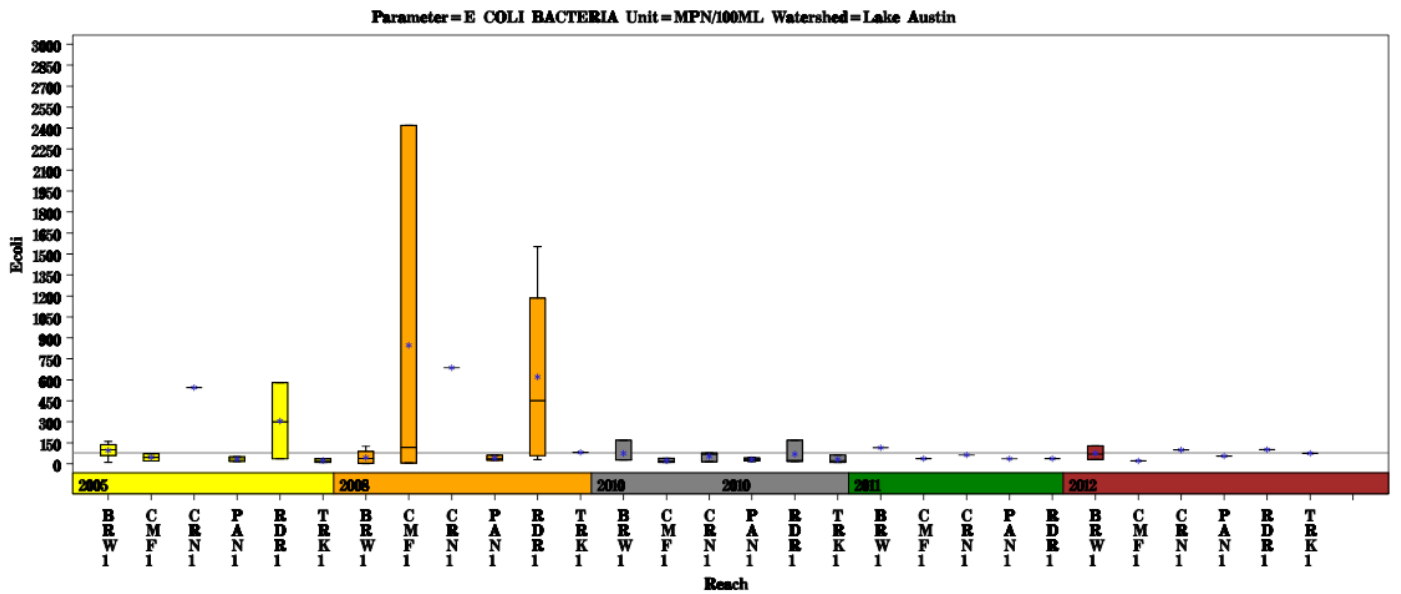
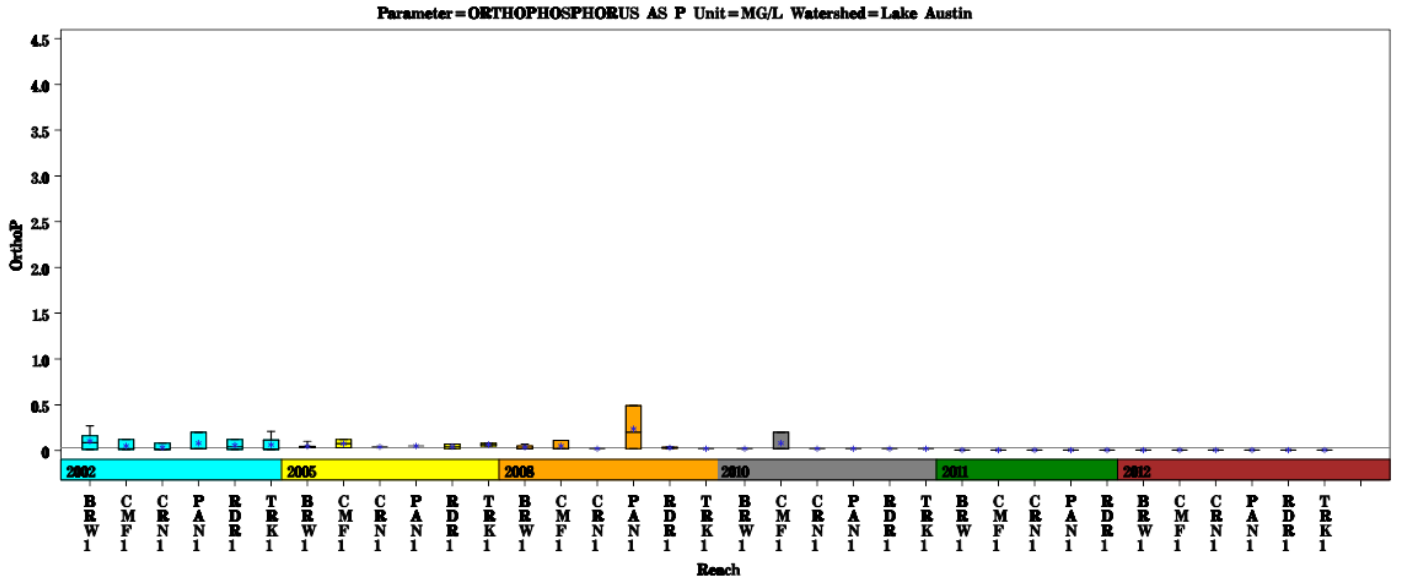
Lake Austin Tributaries

Data Summary Graphs – Ammonia and Nitrate/Nitrite (Downstream to Upstream by Year)



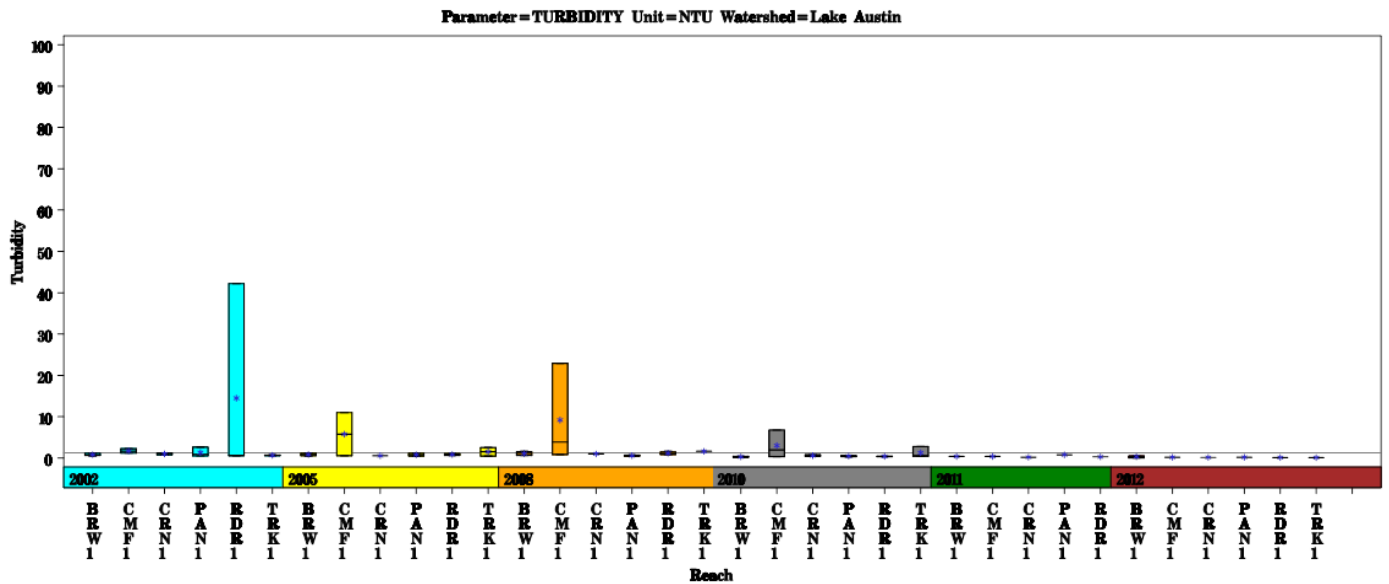
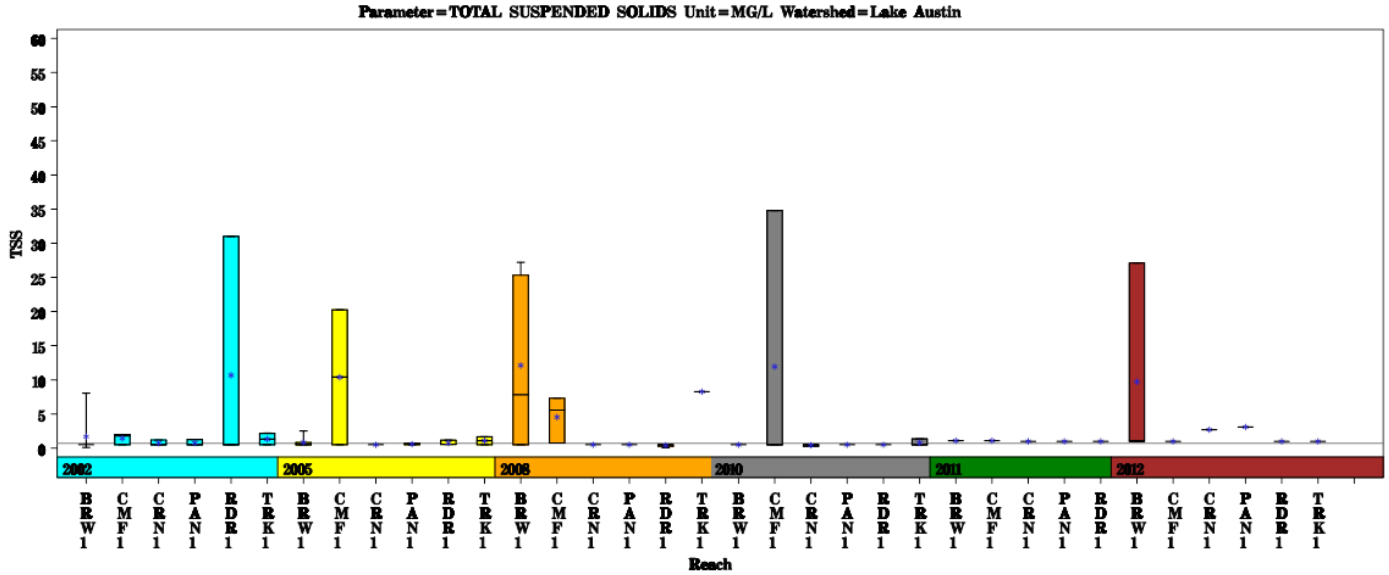
Lake Austin Tributaries

Data Summary Graphs – Orthophosphate and E.coli (Downstream to Upstream by Year)



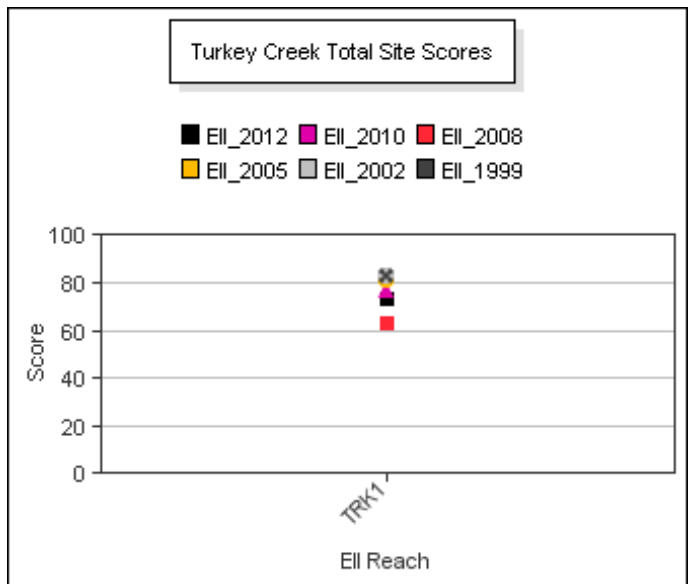
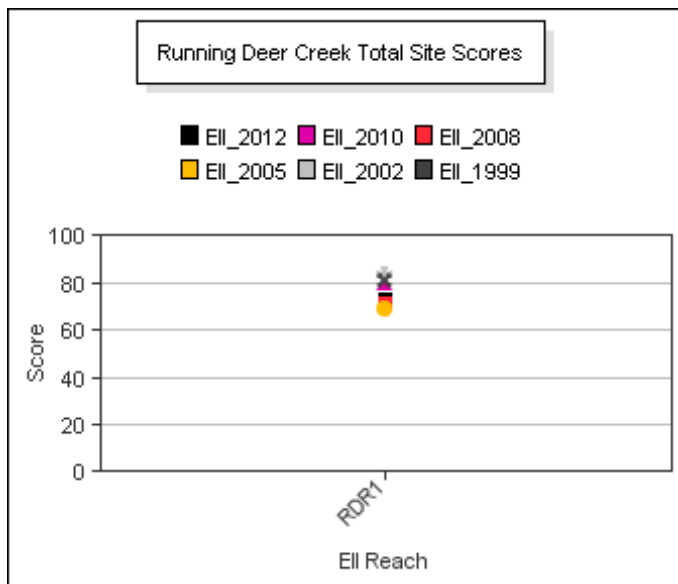
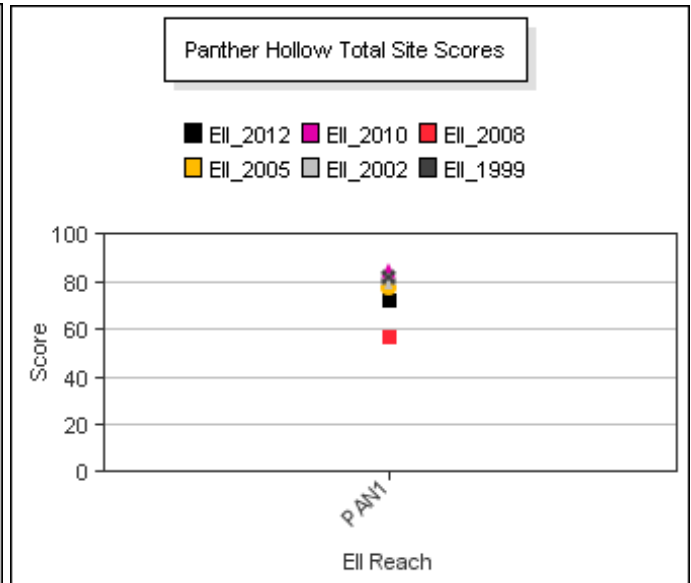
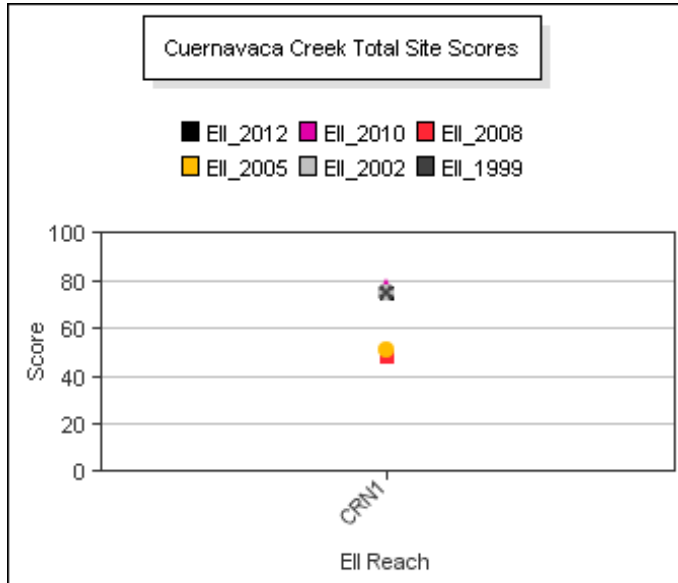
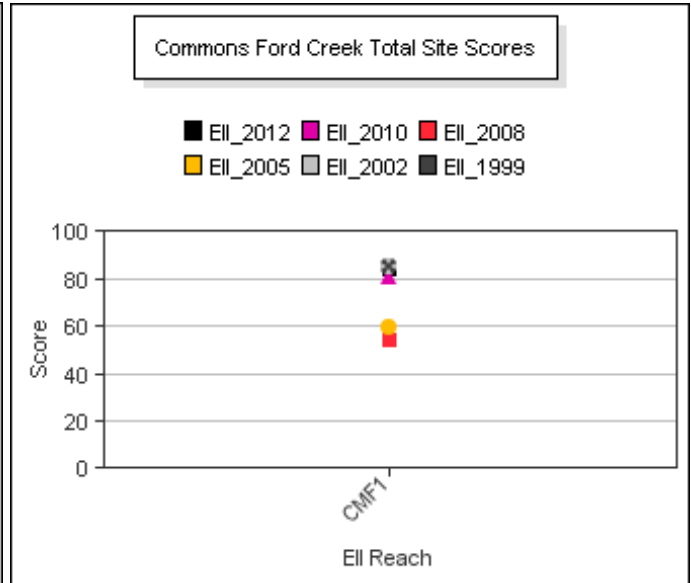
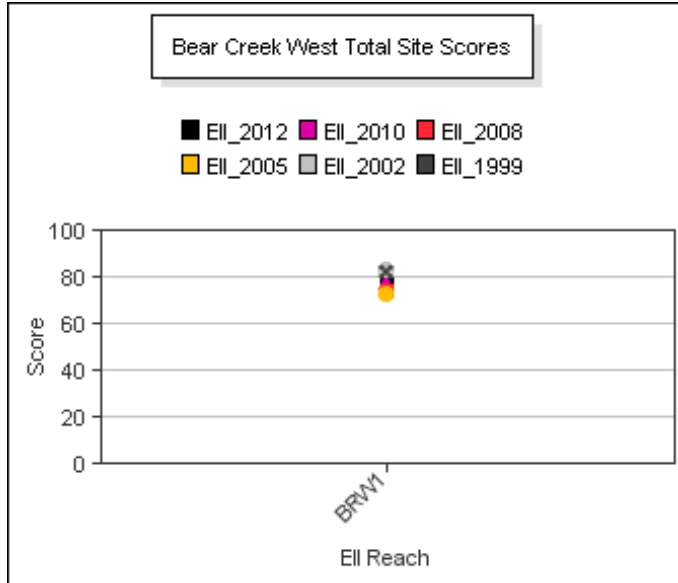
Lake Austin Tributaries

Data Summary Graphs – Total Suspended Solids and Turbidity (Downstream to Upstream by Year)



Lake Austin Tributaries

Score Summary – Reach scores for each sample year



Lake Austin Tributaries

Site Photographs



1048-ds-03_04_2010



1048-us-03_04_2010



1222_00-us-05_17_2010



1222_00-ur-05_17_2010



1223_00-ds-05_26_2010



1223_00-us-05_26_2010

Lake Austin Tributaries

Site Photographs



316_00-ds-05_27_2010



316_00-us-05_27_2010



1221_00-ds-05_26_2010



1221_00-us-05_26_2010



1224_00-ds-05_26_2010



1224_00-us-05_26_2010

This page left intentionally blank