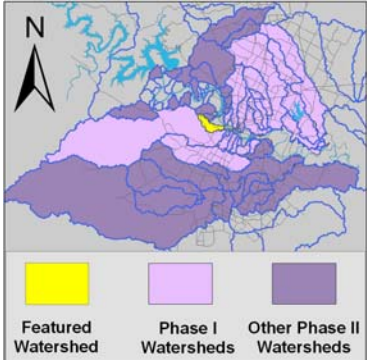


# Eanes Creek Watershed

## Summary Sheet

Catchment	Total area	3.7 sq. miles				
	Area in recharge	2.28 sq. miles				
	Creek length	6 miles				
	Receiving water	Town Lake				
Demographics	2000 population	5,951				
	2030 projected population	9,357				
	30 year projected % increase	57 %				
Land Use	Impervious cover (2003 estimate)	25.72 %				
Overall EII Scores	2001	2004	2007	2010	2012	
	61	68	60	66	67	



### Flow Regime\* for Sample Sites on Eanes Creek

Site #	Site Name	2001					2004					2007					2010				2011	2012			
		Mar	Mar	Jun	Sep	Dec	Mar	May	May	Jun	Oct	Dec	Feb	May	Jun	Sep	Dec	Mar	May	May	Oct	Dec	Mar	May	
		WQ	Bio	WQ	WQ	WQ	WQ	WQ	Bio	WQ	WQ	WQ	WQ	WQ	Bio	WQ	WQ	WQ	WQ	Bio	WQ	WQ	WQ	WQ	Bio
1106	Camp Craft	B	B	n	B	B	B	B	B	B	B	B	B	B	S	B	B	B	B	B	B	B	B	B	n
182	Rollingwood	n		n	n	n																			

\* B = baseflow    n = no flow    storm = storm flow    blue = Samples were taken    grey = Samples were not taken    blank = not visited

### Summary of 2012 Data for Eanes Creek

Summary	Parameter	Mean	Max	Min	Discussion
Physicochemical	D.O. mg/l	9.2	9.6	8.7	Within normal range, generally above average.
	pH st.units	7.86	7.93	7.79	Within normal range.
	Cond uS/cm	1039	1049	1029	Consistently high readings.
Nutrients	NH <sub>3</sub> mg/l	0.008	0.008	0.008	Generally low.
	NO <sub>3</sub> mg/l	1.377	1.800	0.953	Within normal range.
	Ortho P mg/l	0.004	0.004	0.004	Generally low.
Sediment Load	TSS mg/l	1.0	1.0	1.0	Generally low.
	Turbidity ntu	0.42	0.42	0.42	Generally low.
Biology	E.Coli /100ml	82	93	70	Generally low.
	Benthic Macroinvertebrates and Diatoms: evaluations are provided in the introduction of this report				

### Index scores\* for Eanes Creek by Year

Reach	Site	Site Name	Year	Water Quality	Sediment**	Contact Rec.	Non-Contact Rec.	Physical Integrity	Aquatic Life	Benthic subindex	Diatom subindex	Total EII Score
EAN1	182	Eanes Creek @ Rollingwood	1998		58		52	62				43
EAN2	1106	Eanes Creek @ Camp Craft Road	1998	51	58	76	88	74	70	65	75	70
EAN1	182	Eanes Creek @ Rollingwood	2001		73		55	35				41
EAN2	1106	Eanes Creek @ Camp Craft Road	2001	51	73	74	76	74	49	21	66	63
EAN2	1106	Eanes Creek @ Camp Craft Road	2004	58	69	43	83	75	78	69	87	68
EAN2	1106	Eanes Creek @ Camp Craft Road	2007	54	57	42	77	66	65	59	70	60
EAN2	1106	Eanes Creek @ Camp Craft Road	2010	53	63	45	93	73	67	59	74	66
EAN2	1106	Eanes Creek @ Camp Craft Road	2012	55	74	50	62	75	85	83	86	67

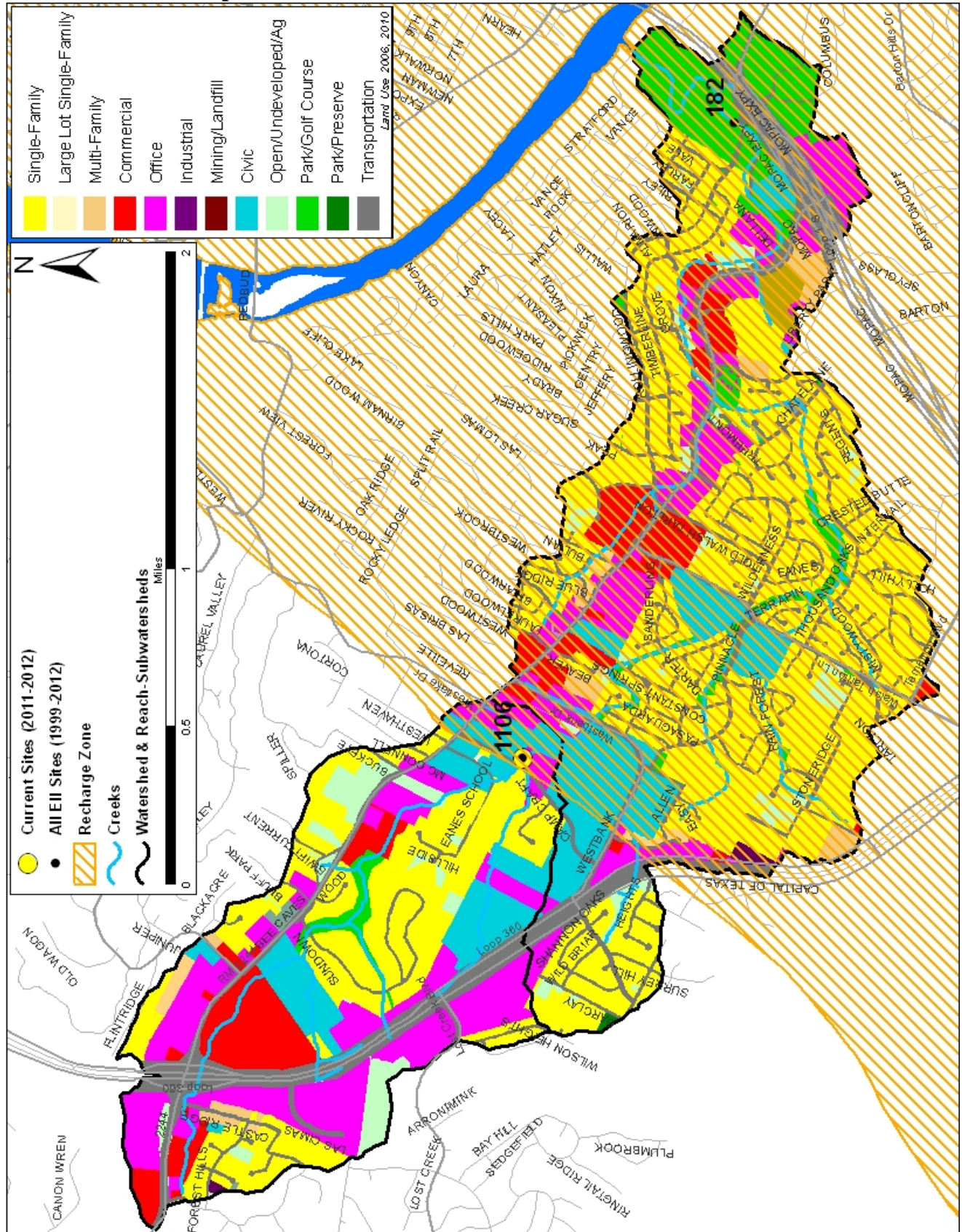
\* blank cells indicate parameter was not collected, blank row indicate site was dropped

\*\*sediment samples only collected at the downstream site

100-87.5 Excellent   
 87.5-75 V. Good   
 75-62.5 Good   
 62.5-50 Fair   
 50-37.5 Marginal   
 37.5-25 Poor   
 25-12.5 Bad   
 12.5-0 V. Bad

# Eanes Creek Watershed

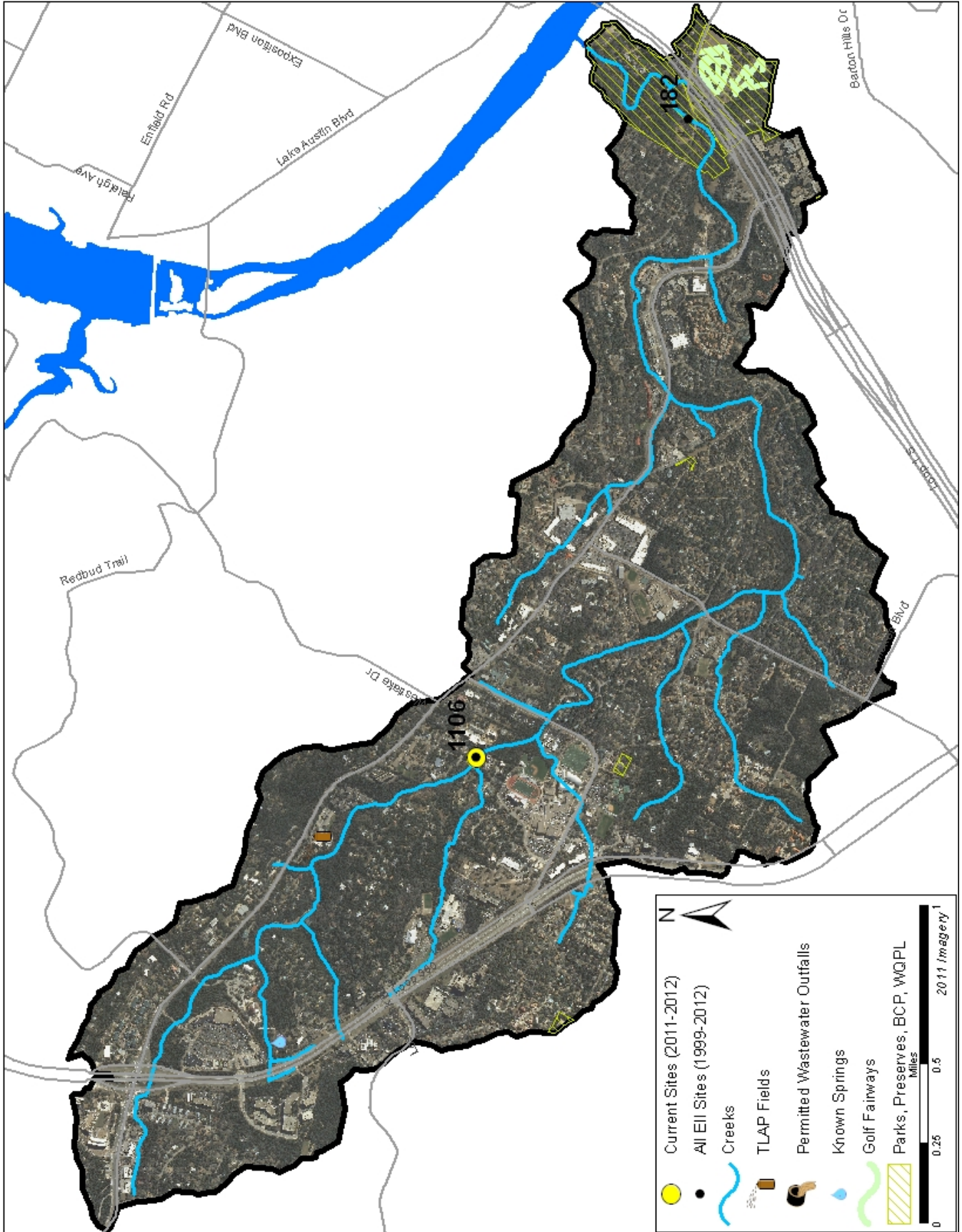
## Land Use Map





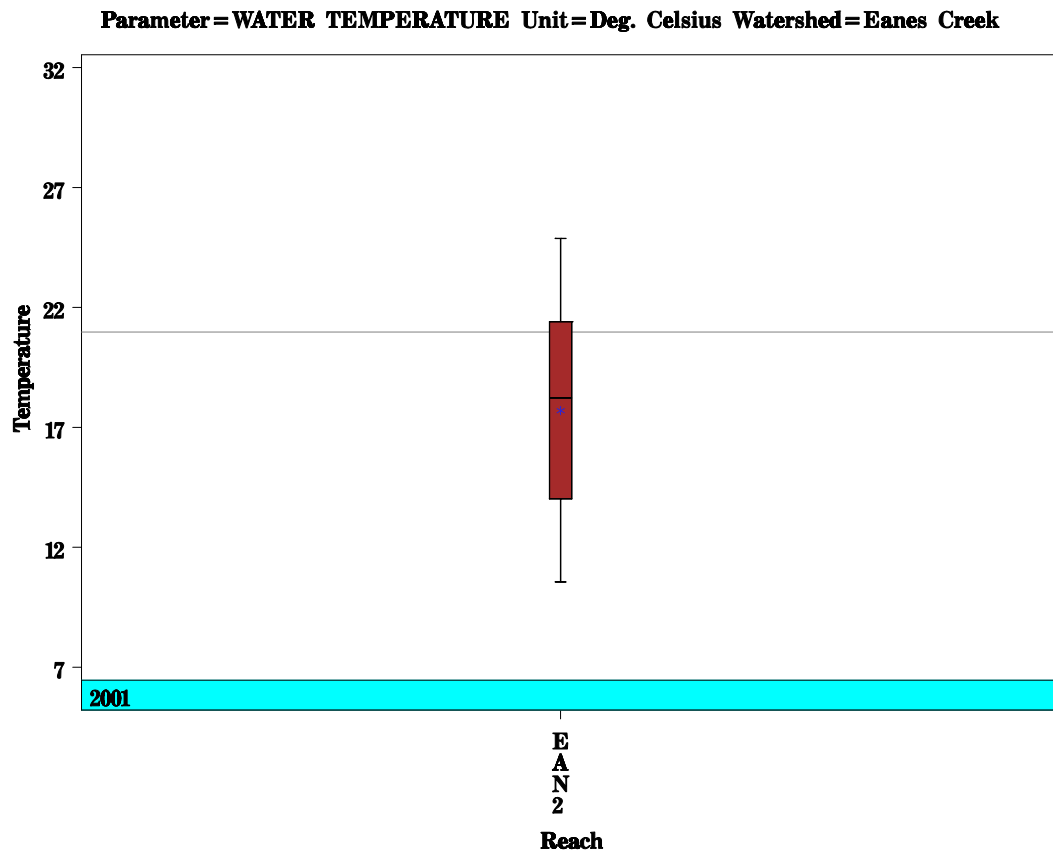
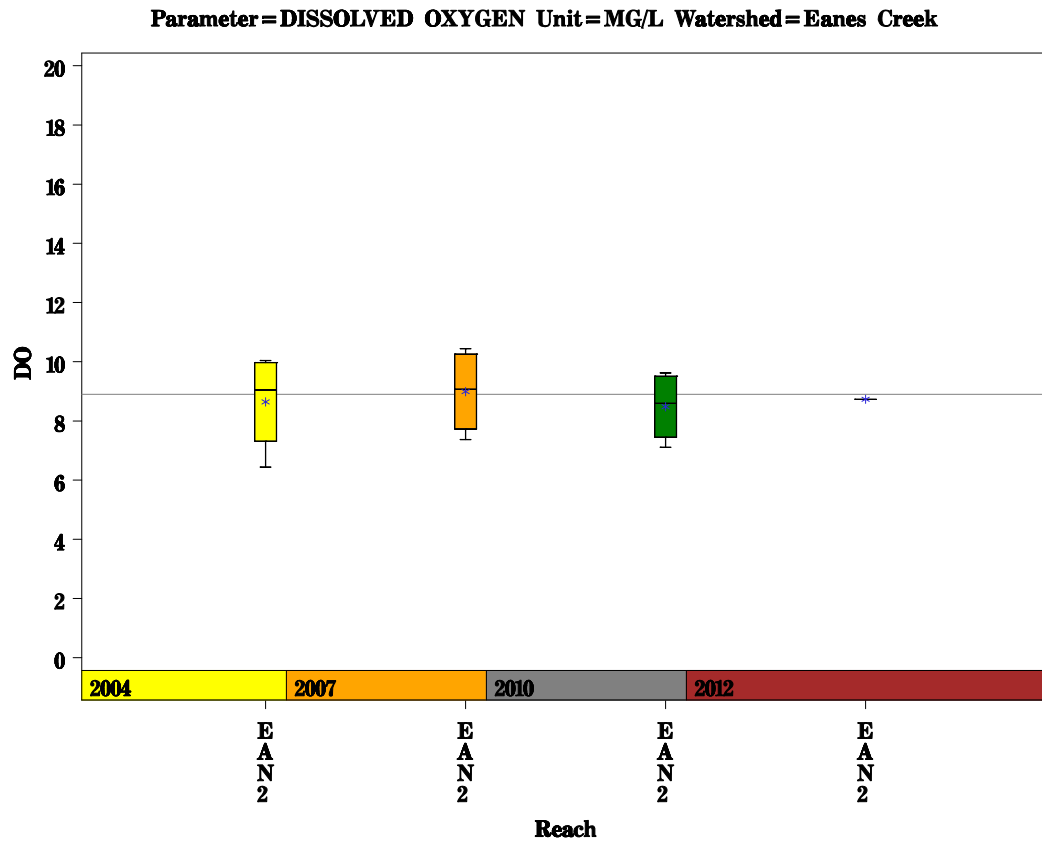
# Eanes Creek Watershed

## Aerial Map



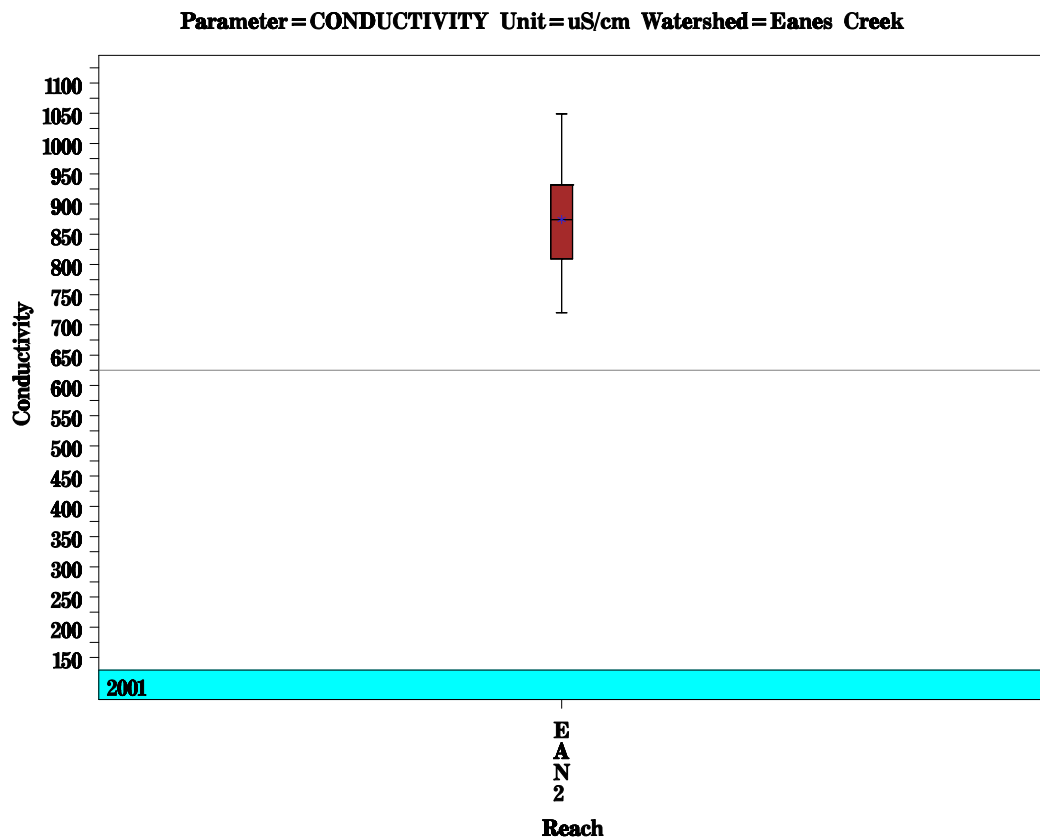
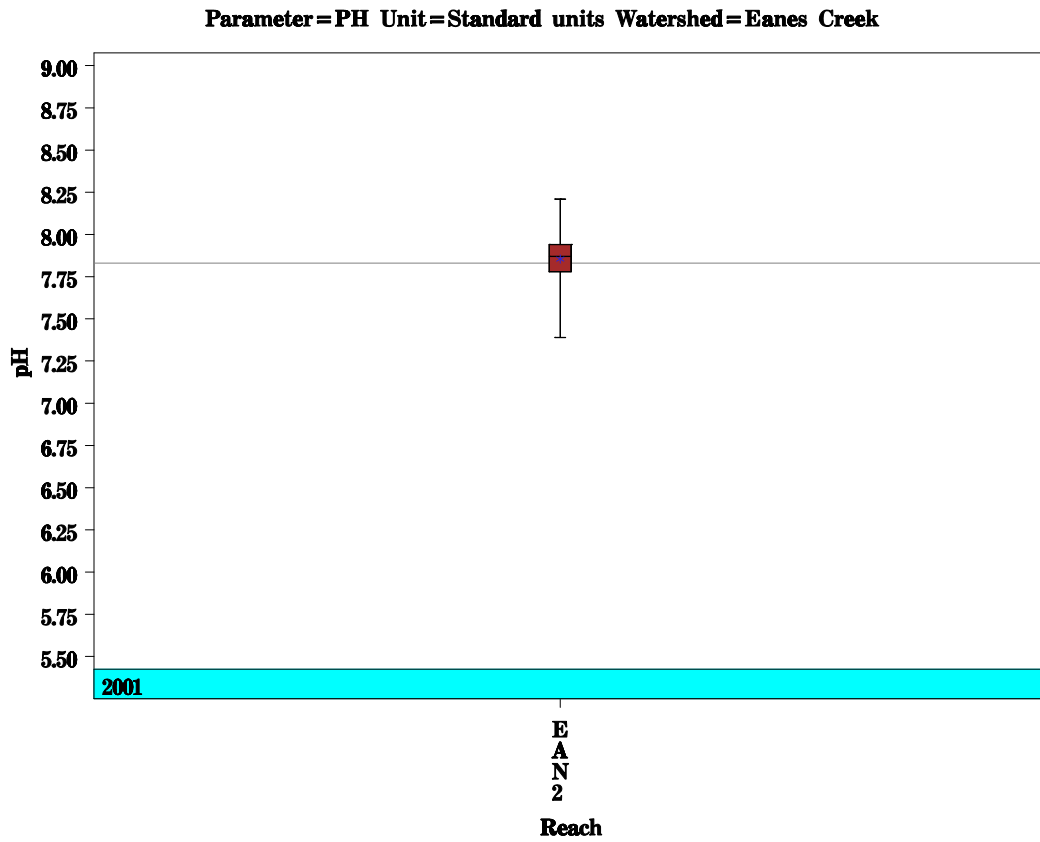
# Eanes Creek Watershed

Data Summary Graphs – Dissolved Oxygen and Temperature (Downstream to Upstream by Year)



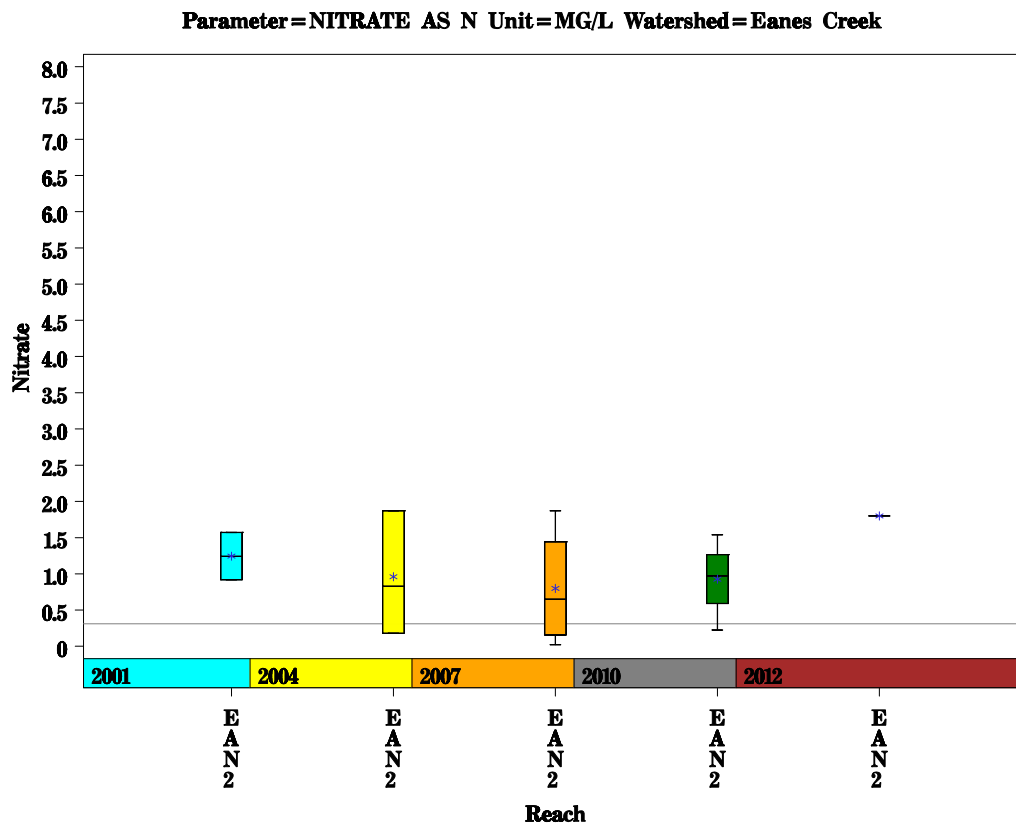
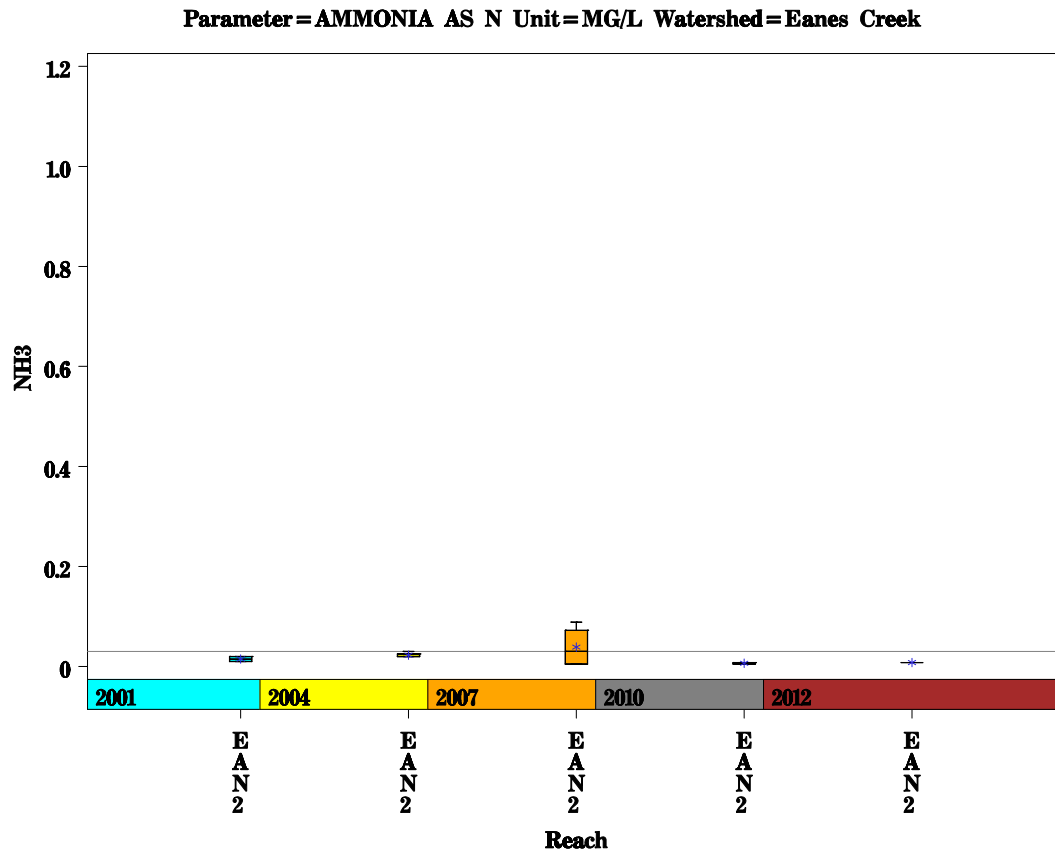
# Eanes Creek Watershed

Data Summary Graphs – pH and Conductivity (Downstream to Upstream by Year)



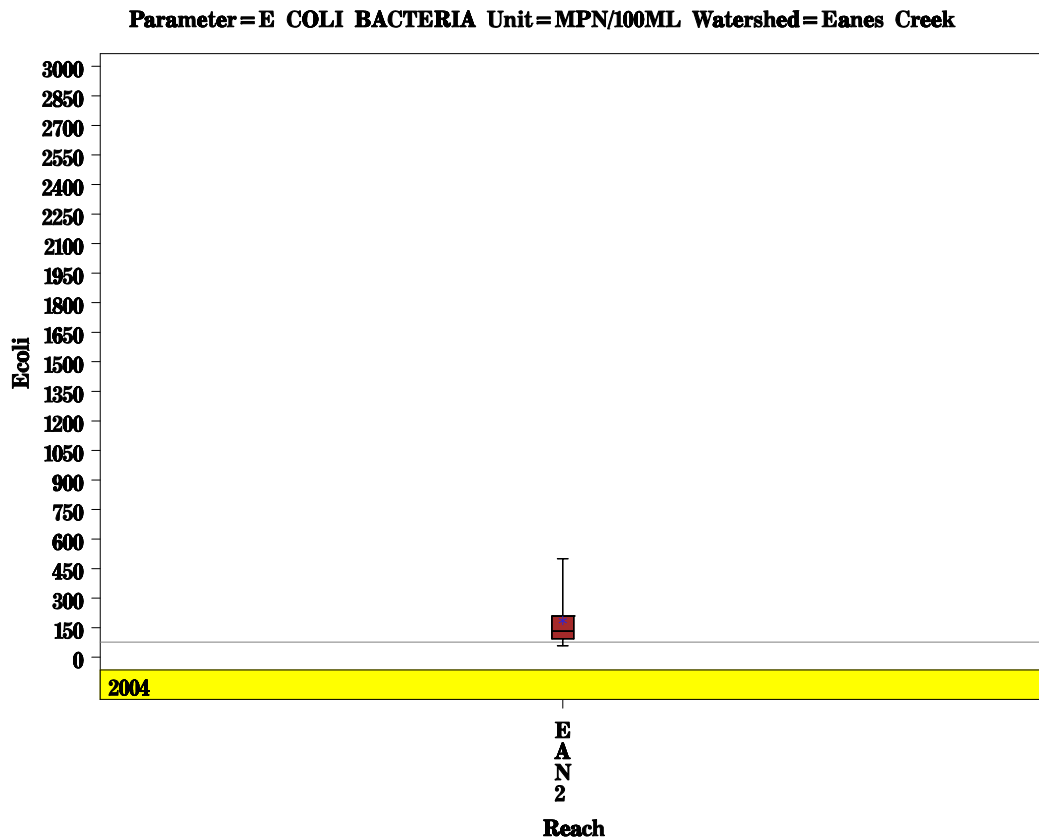
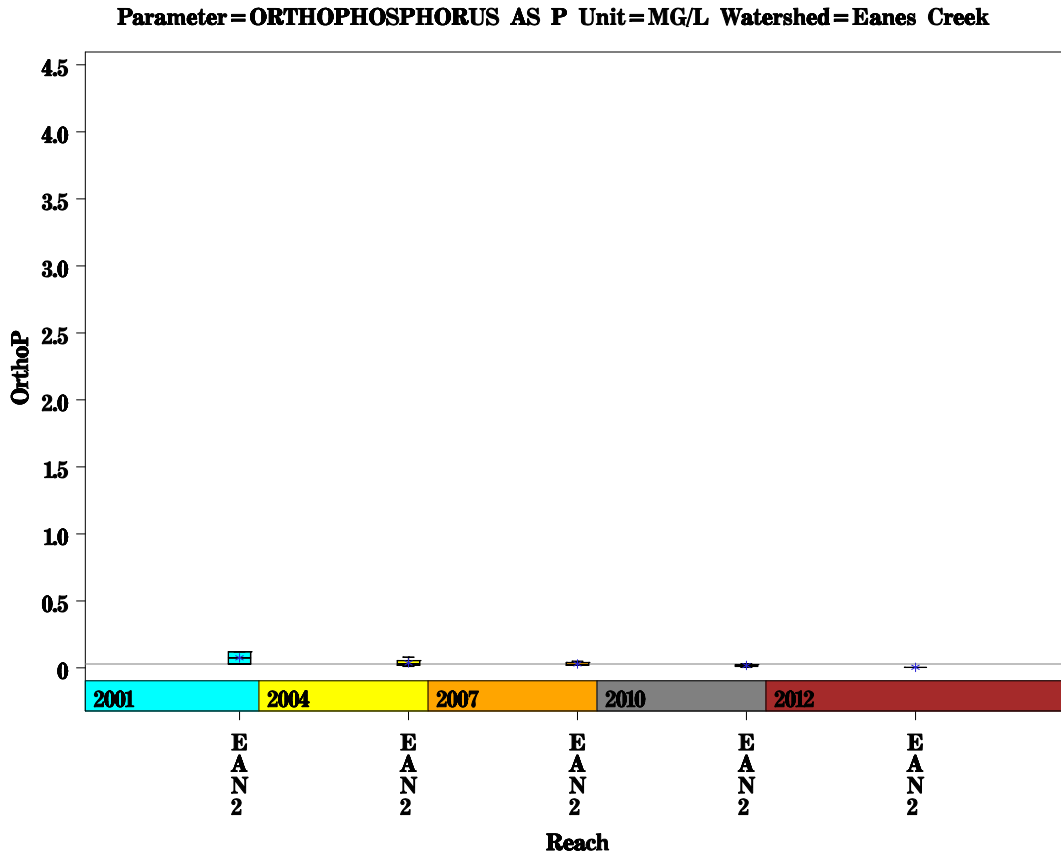
# Eanes Creek Watershed

Data Summary Graphs – Ammonia and Nitrate/Nitrite (Downstream to Upstream by Year)



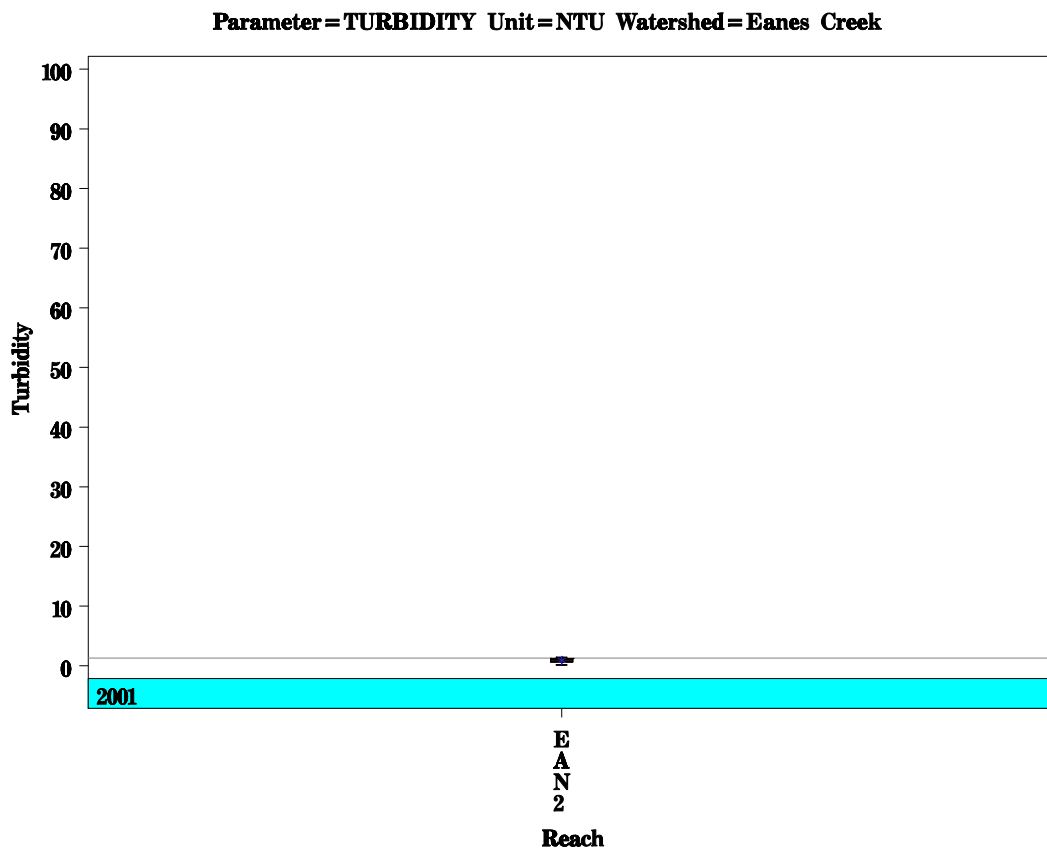
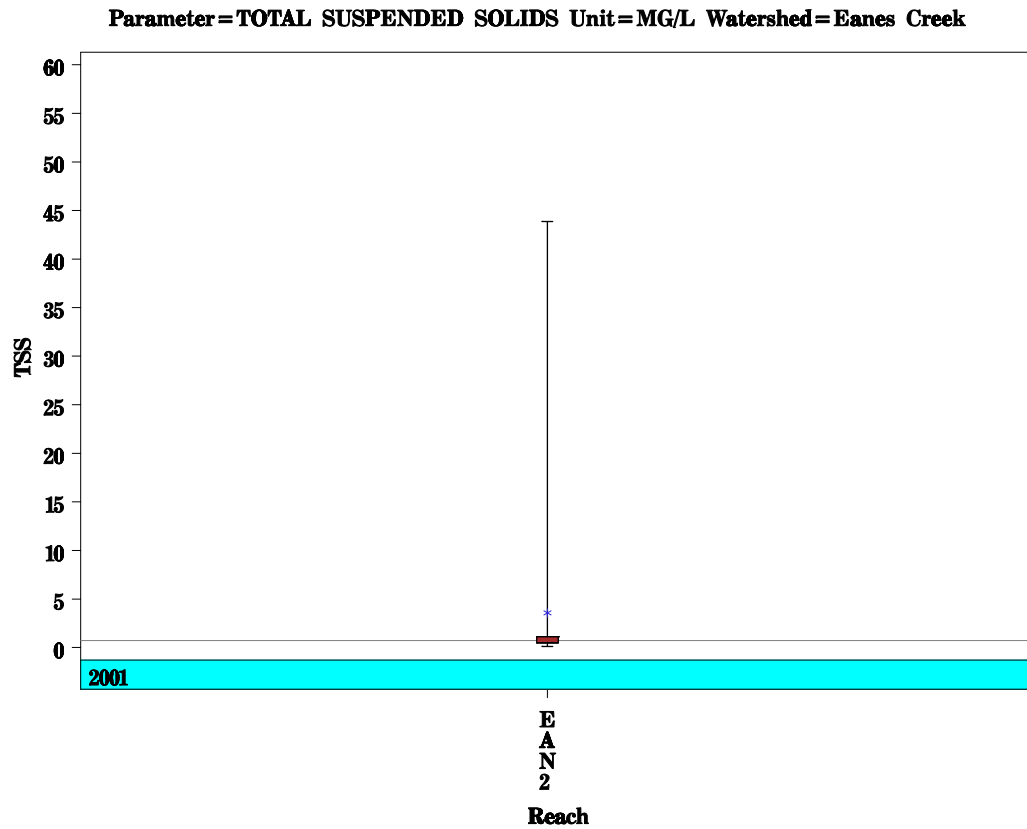
# Eanes Creek Watershed

Data Summary Graphs – Orthophosphate and E.coli (Downstream to Upstream by Year)



# Eanes Creek Watershed

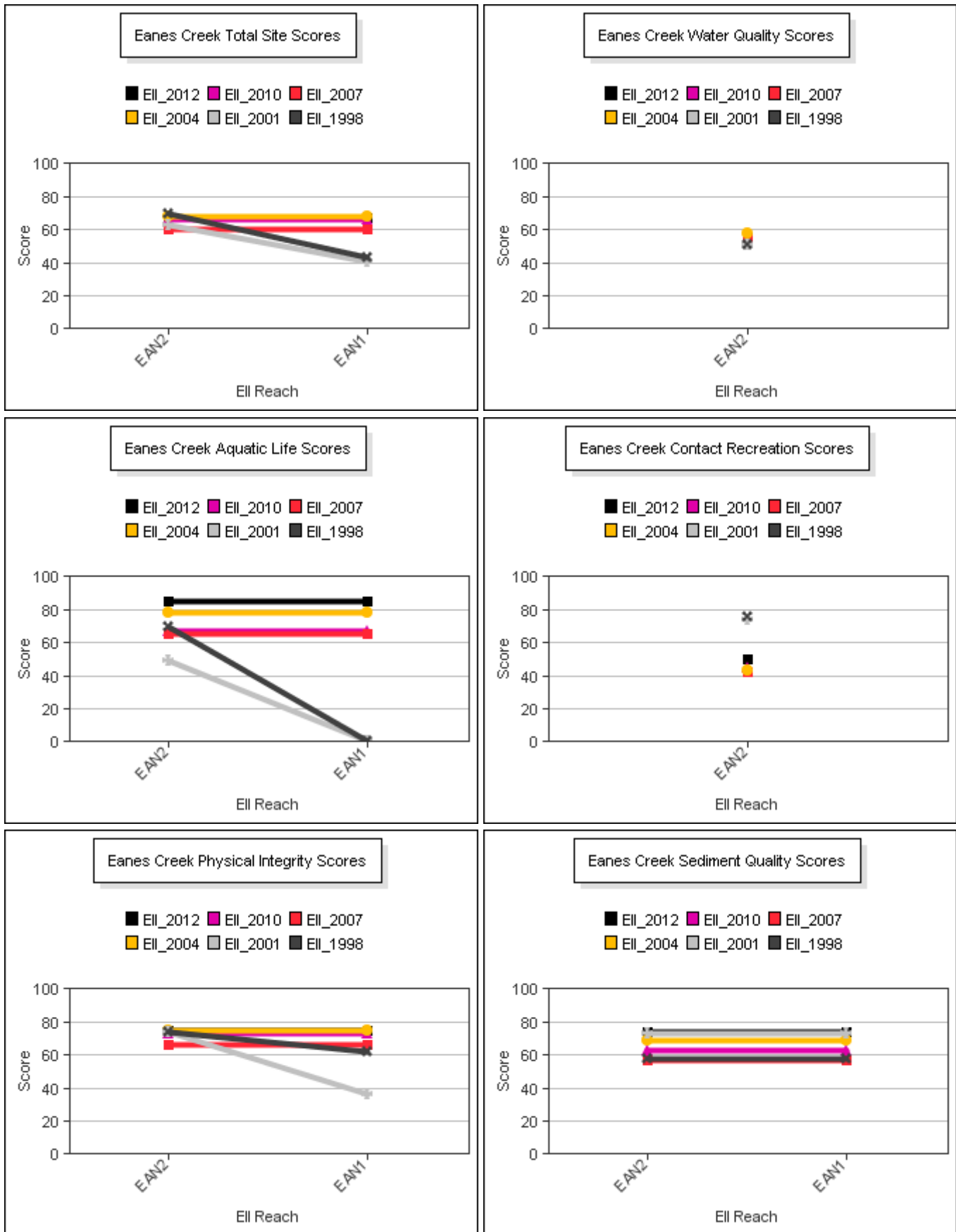
Data Summary Graphs – Total Suspended Solids and Turbidity (Downstream to Upstream by Year)





# Eanes Creek Watershed

## Score Summary – Reach scores for each sample year



---

# Eanes Creek Watershed

---

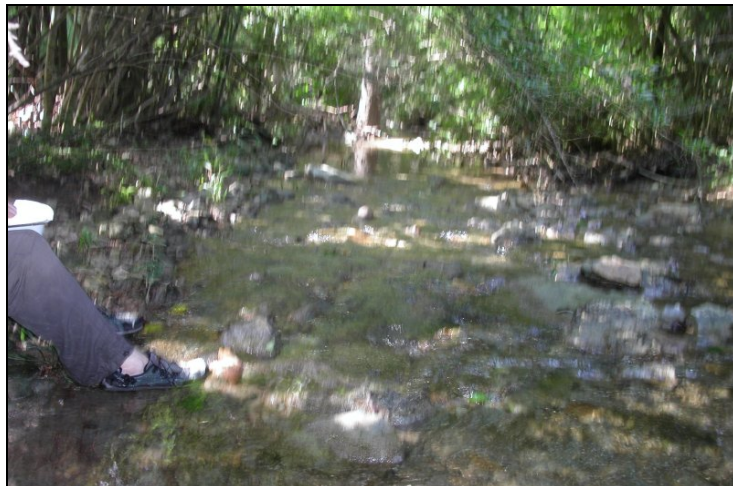
## Site Photographs



1106\_us\_06\_19\_2007



1106\_ur\_06\_19\_2007



1106\_ds\_06\_19\_2007



---

# Eanes Creek Watershed

---

## Site Photographs



1106\_00-us-05\_17\_2010



1106\_00-ur-05\_17\_2010



1106\_00-ds-05\_17\_2010

This page left intentionally blank