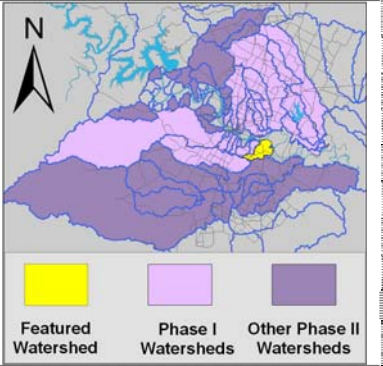


Carson Creek Watershed

Summary Sheet

Catchment	Total area	6 square miles				
	Area in recharge	none				
	Creek length	6 miles				
Demographics	Receiving water	Colorado River				
	2000 population	6,982				
	2030 projected population	9,273				
Land Use	30 year projected % increase	33 %				
	Impervious cover (2003 estimate)	19.43 %				
Overall EII Scores	2001	2004	2007	2010	2012	
	65	60	66	65	68	



Flow Regime* for Sample Sites on Carson Creek

Site #	Site Name	2004						2007					2010				2011	2012	
		Mar	May	May	Jun	Oct	Dec	Feb	May	Jun	Sep	Dec	Mar	May	May	Oct	Dec	Mar	Apr
		WQ	WQ	Bio	WQ	WQ	WQ	WQ	WQ	Bio	WQ	WQ	WQ	WQ	Bio	WQ	WQ	WQ	Bio
1095	US 183	B	n		B	B	B												
1096	Hoecke	B	B	B	B	B	B	B	B	S	B	B	B	B	S	B	B	B	B
1094	Shady Spgs	B	B	B	B	B	B	B	B	B	B	B	B	B	S	B	B	B	B

* B = baseflow n = no flow storm = storm flow blue = Samples were taken grey = Samples were not taken blank = not visited

Summary of 2012 Data for Carson Creek

Summary	Parameter	Mean	Max	Min	Comments
Physicochemical	D.O. mg/l	6.5	10.8	2.5	Wide range: some low values downstream, some high values upstream.
	pH st.units	7.68	8.0	7.4	Some low values downstream, generally higher upstream.
	Cond uS/cm	700	850	428	Within normal range.
Nutrients	NH ₃ mg/l	0.011	0.022	0.008	Within normal range.
	NO ₃ mg/l	1.996	3.550	0.133	Within normal range, higher values at mouth site 1094.
	Ortho P mg/l	0.007	0.012	0.004	Within normal range, generally higher downstream.
Sediment Load	TSS mg/l	3.6	11.1	1.1	Some above average values downstream, but within normal range.
	Turbidity ntu	1.23	1.90	0.85	Within normal range.
Biology	E.Coli /100ml	434	921	56	Generally within normal range, some high values downstream.
	Benthic Macroinvertebrates and Diatoms: evaluations are provided in the introduction of this report				

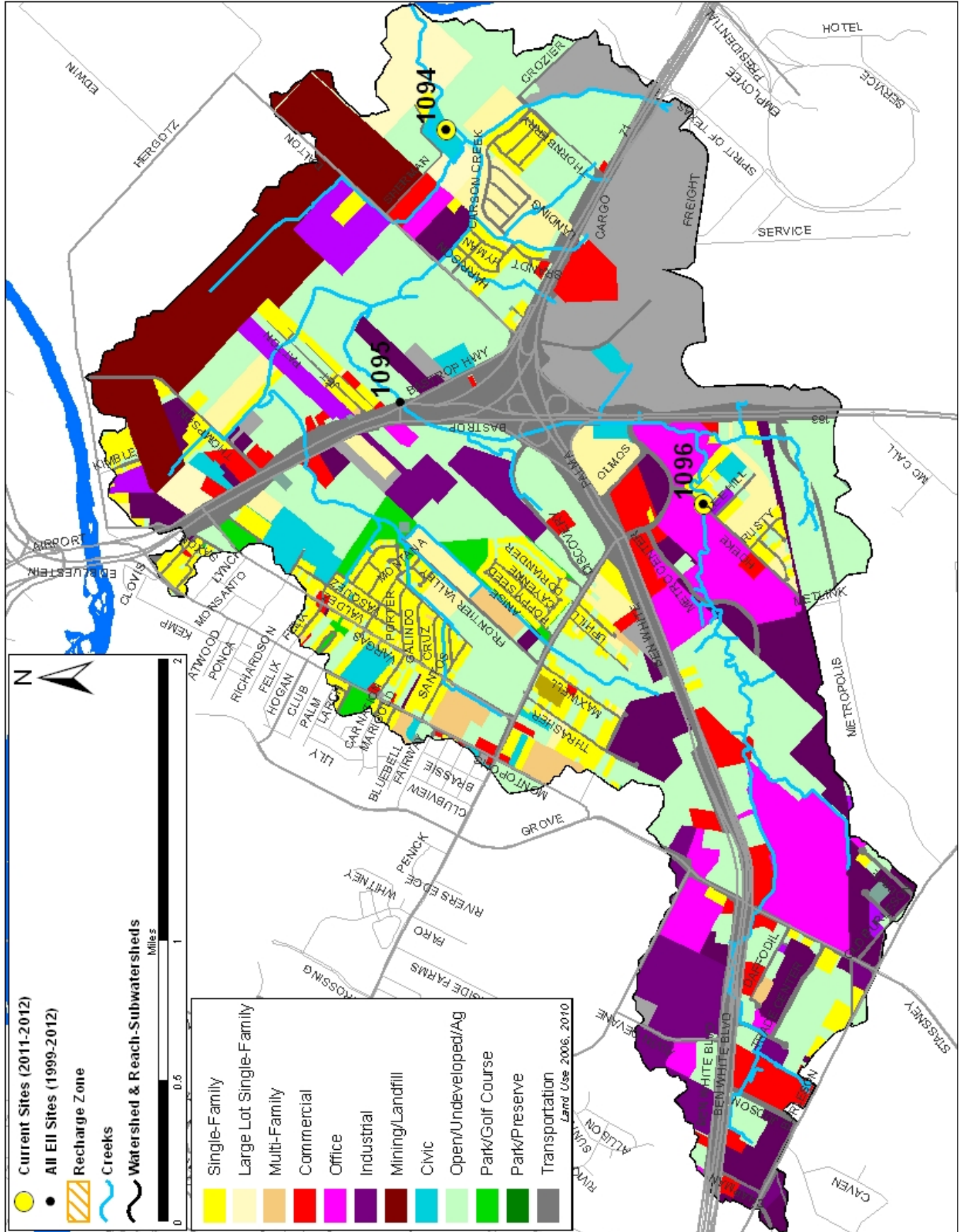
Index scores* for Carson Creek Sites by Year

Reach	Site	Site Name	Year	Water Quality	Sediment**	Contact Recreation	Non-Contact Rec.	Physical Integrity	Aquatic Life	Benthic subindex	Diatom subindex	Total EII Score
CAR1	1094	@ Shady Spring Sub	1998	45	83	85	85	69	53	55	50	70
CAR2	1095	@ US 183	1998	59	83	90	62	53	50	49	51	66
CAR2	1096	@ Hoecke Lane	1998	57	83	92	74	38	66	75	57	68
CAR1	1094	@ Shady Spring Sub	2001	40	85	76	82	74	48	39	56	64
CAR2	1095	@ US 183	2001	62	85	92	68	61	22	37	6	65
CAR2	1096	@ Hoecke Lane	2001	54	85	91	73	55	12	18	6	60
CAR1	1094	@ Shady Spring Sub	2004	54	85	51	88	72	67	60	73	70
CAR2	1095	@ US 183	2004	68	85	46	37	44				47
CAR2	1096	@ Hoecke Lane	2004	56	85	43	65	57	70	75	65	63
CAR1	1094	@ Shady Spring Sub	2007	46	73	43	89	64	74	66	82	65
CAR2	1096	@ Hoecke Lane	2007	56	73	52	91	62	70	71	68	67
CAR1	1094	@ Shady Spring Sub	2010	56	78	46	83	78	50	35	65	65
CAR2	1096	@ Hoecke Lane	2010	66	78	45	79	55	68	65	71	65
CAR1	1094	@ Shady Spring Sub	2012	49	77	33	71	87	82	71	93	67
CAR2	1096	@ Hoecke Lane	2012	64	77	51	80	71	73	72	73	69

* blank cells indicate parameter was not collected, blank row indicate site was dropped **sediment samples only collected at the downstream site
 100-87.5 Excellent 87.5-75 V. Good 75-62.5 Good 62.5-50 Fair 50-37.5 Marginal 37.5-25 Poor 25-12.5 Bad 12.5-0 V. Bad

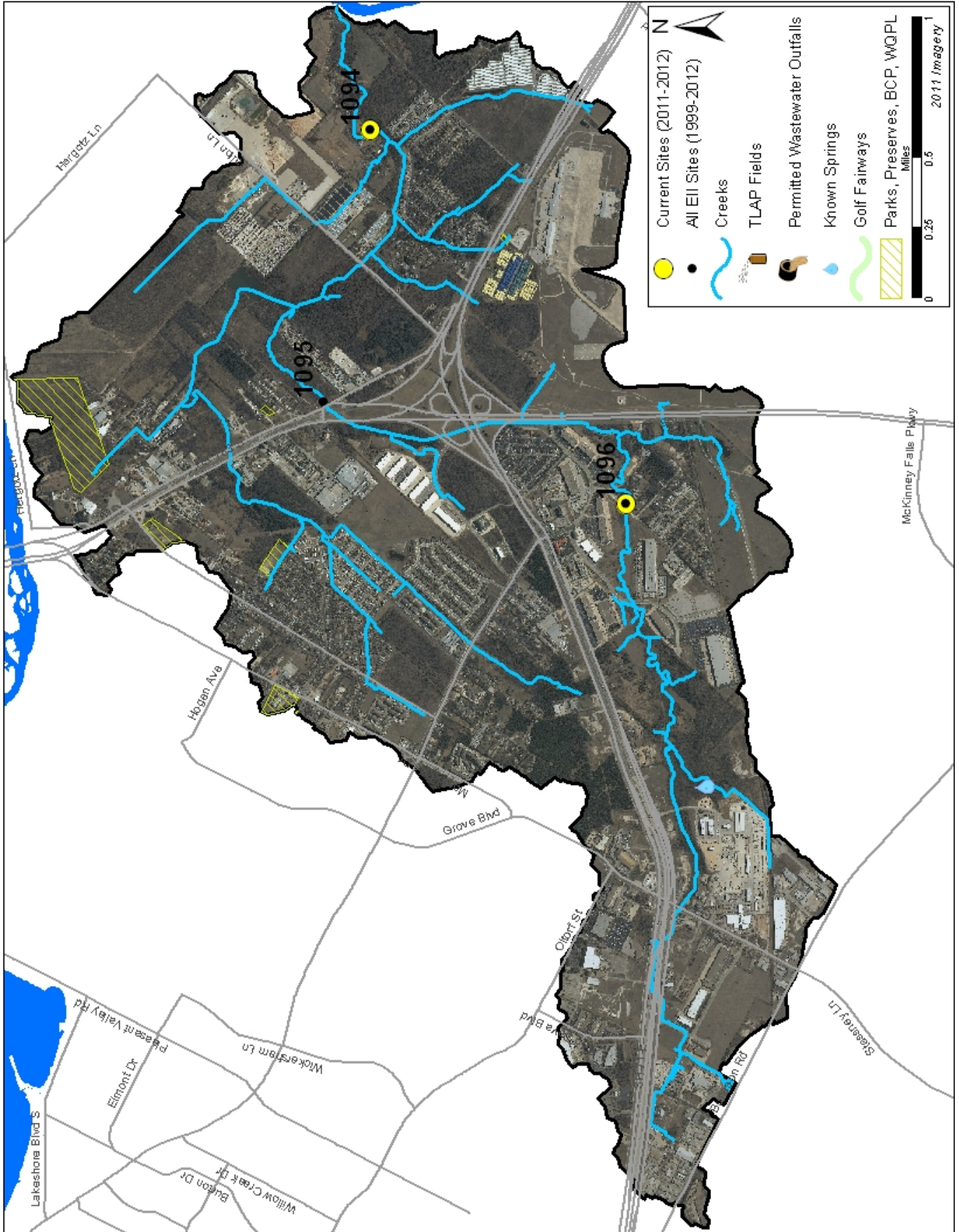
Carson Creek Watershed

Land Use Map



Carson Creek Watershed

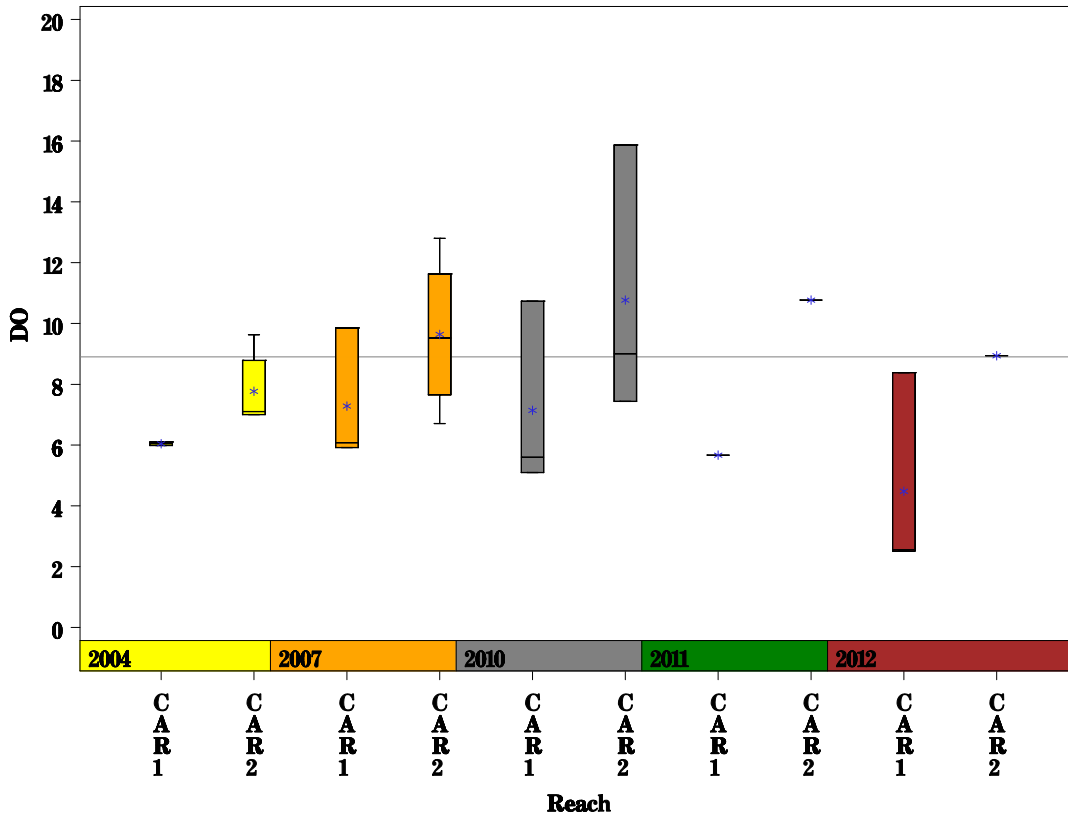
Aerial Map



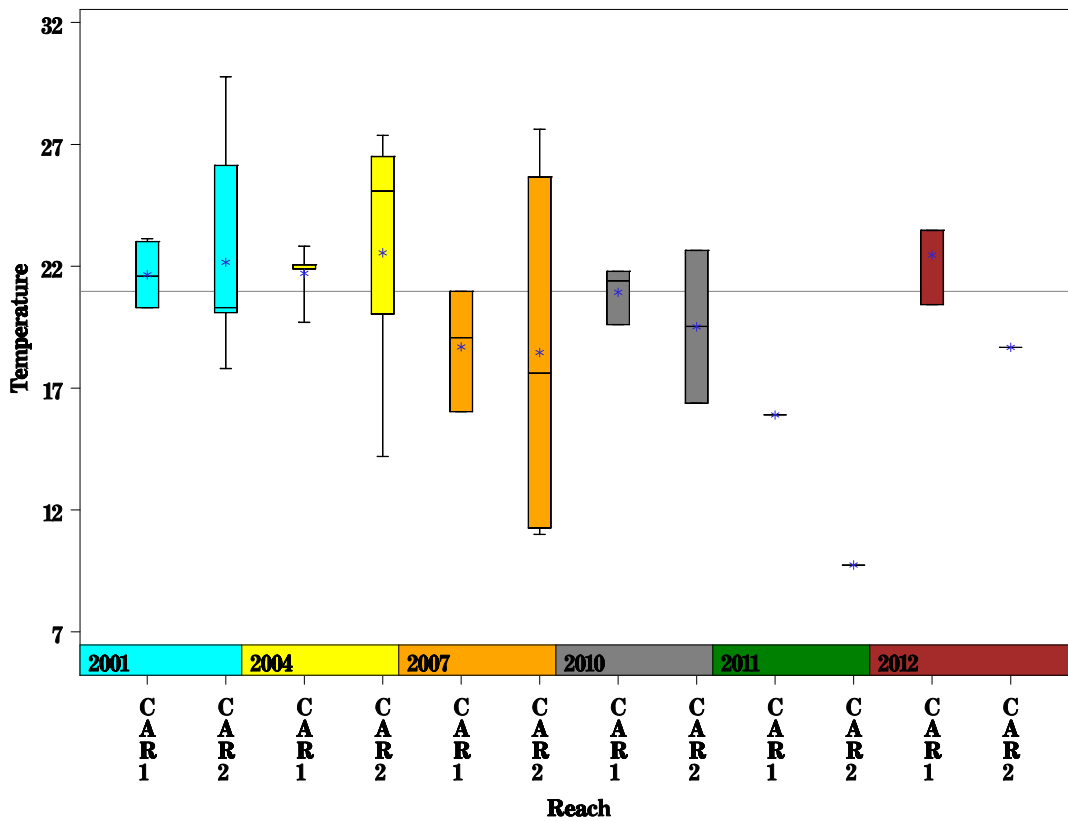
Carson Creek Watershed

Data Summary Graphs – Dissolved Oxygen and Temperature (Downstream to Upstream by Year)

Parameter = DISSOLVED OXYGEN Unit = MG/L Watershed = Carson Creek

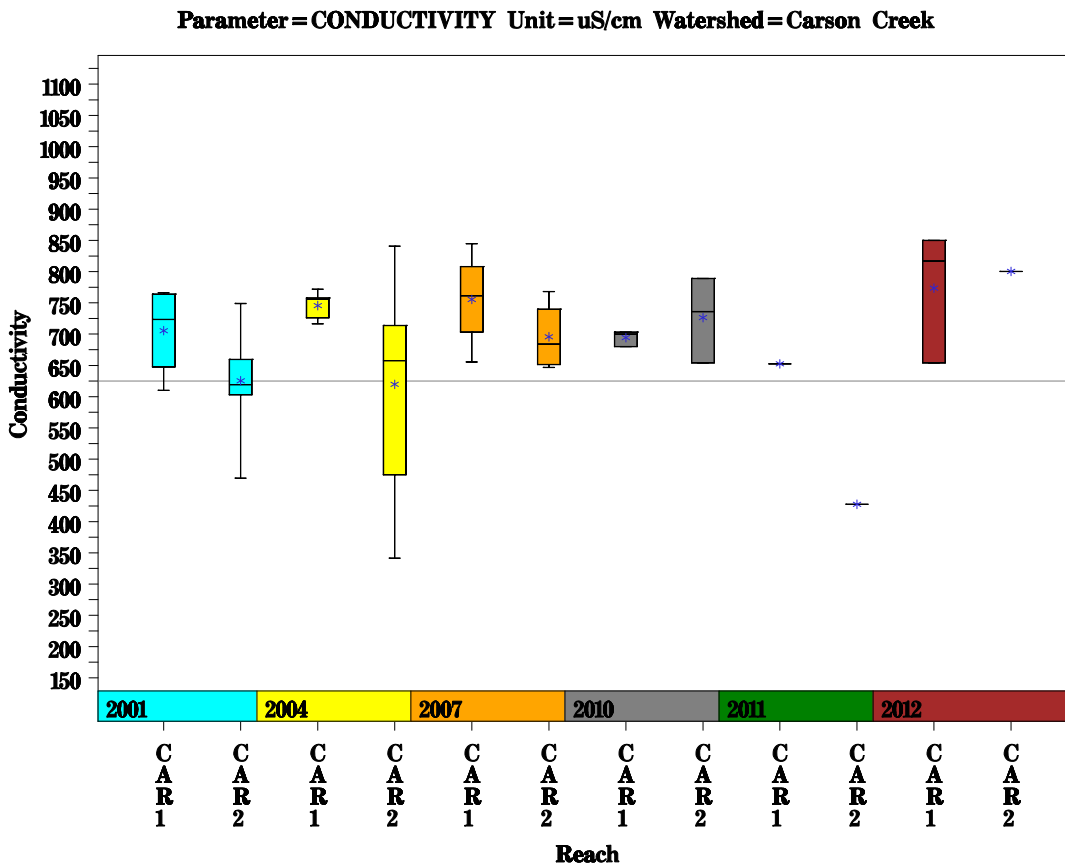
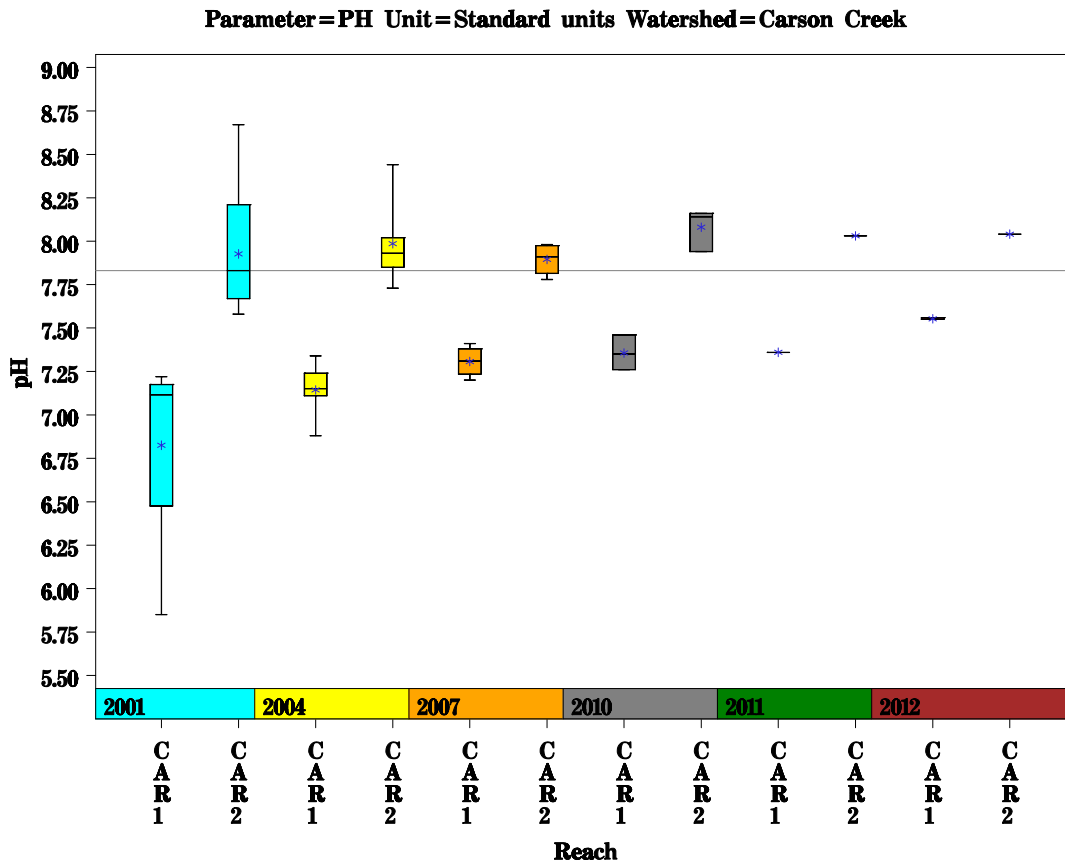


Parameter = WATER TEMPERATURE Unit = Deg. Celsius Watershed = Carson Creek



Carson Creek Watershed

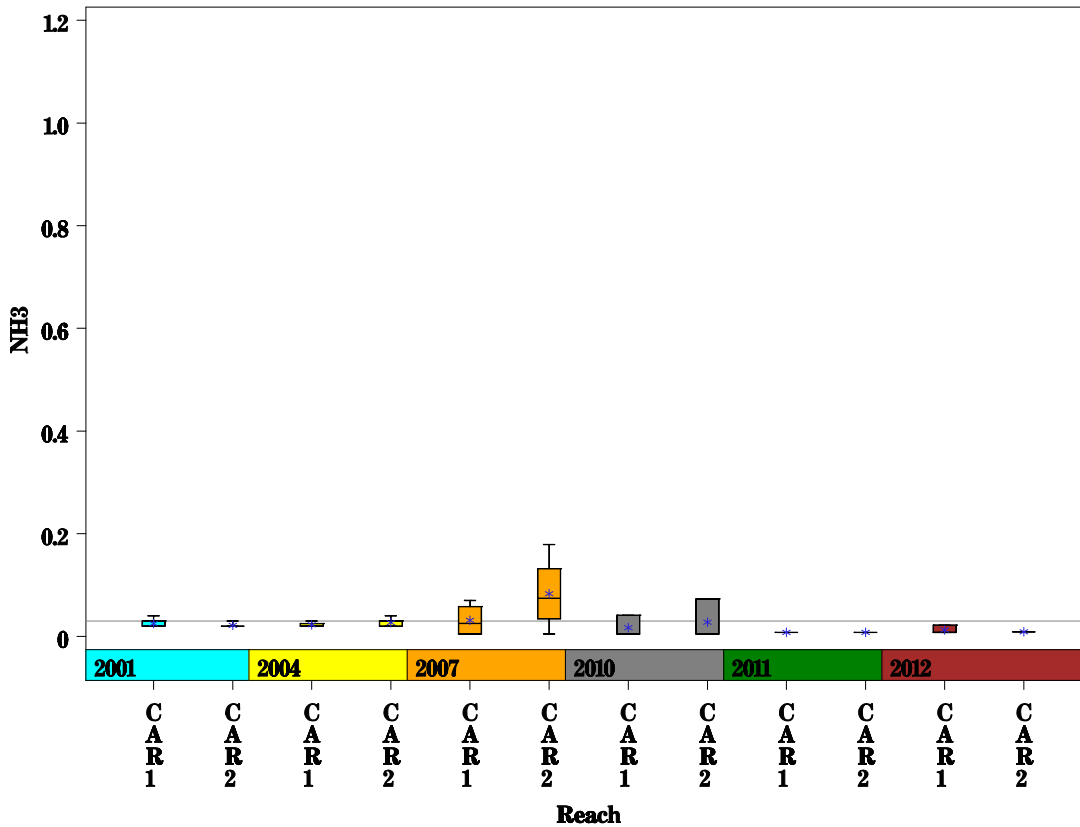
Data Summary Graphs – pH and Conductivity (Downstream to Upstream by Year)



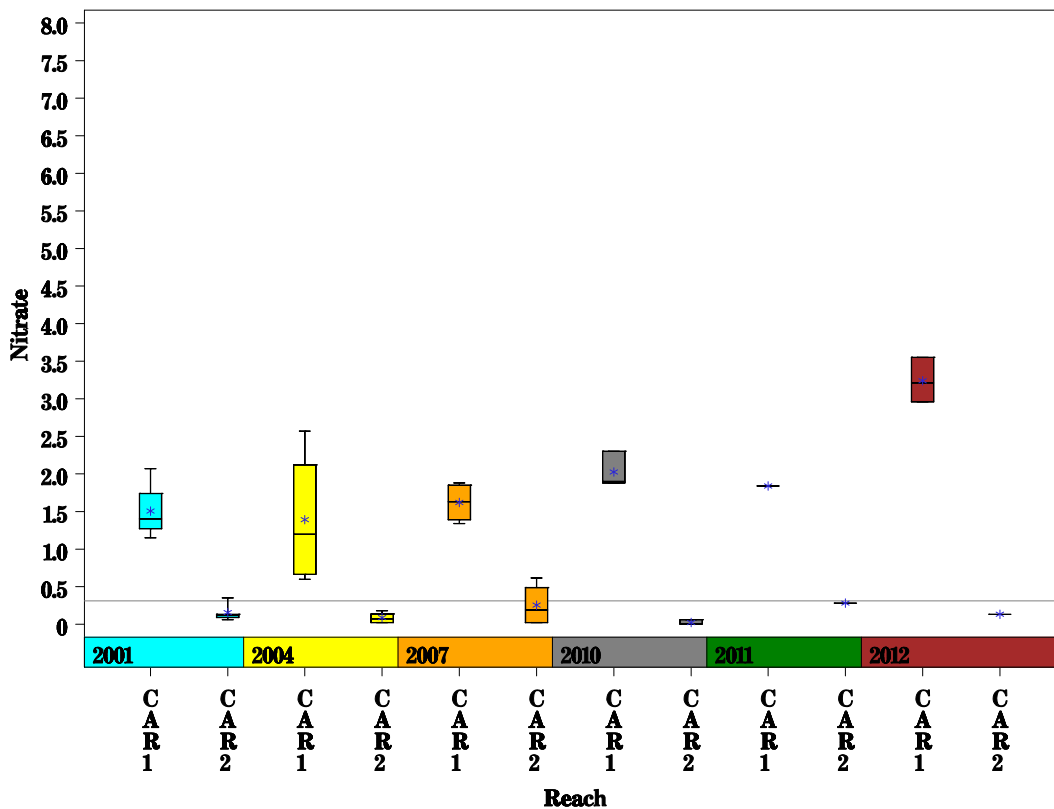
Carson Creek Watershed

Data Summary Graphs – Ammonia and Nitrate/Nitrite (Downstream to Upstream by Year)

Parameter=AMMONIA AS N Unit=MG/L Watershed=Carson Creek

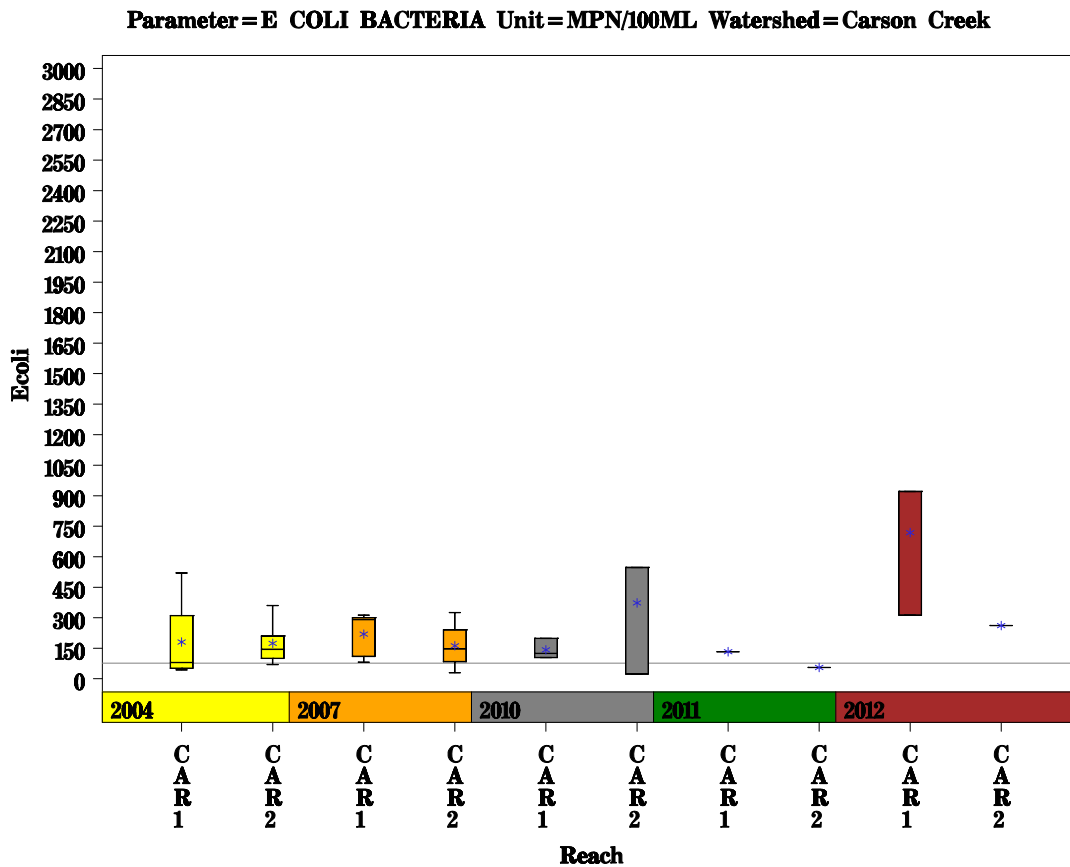
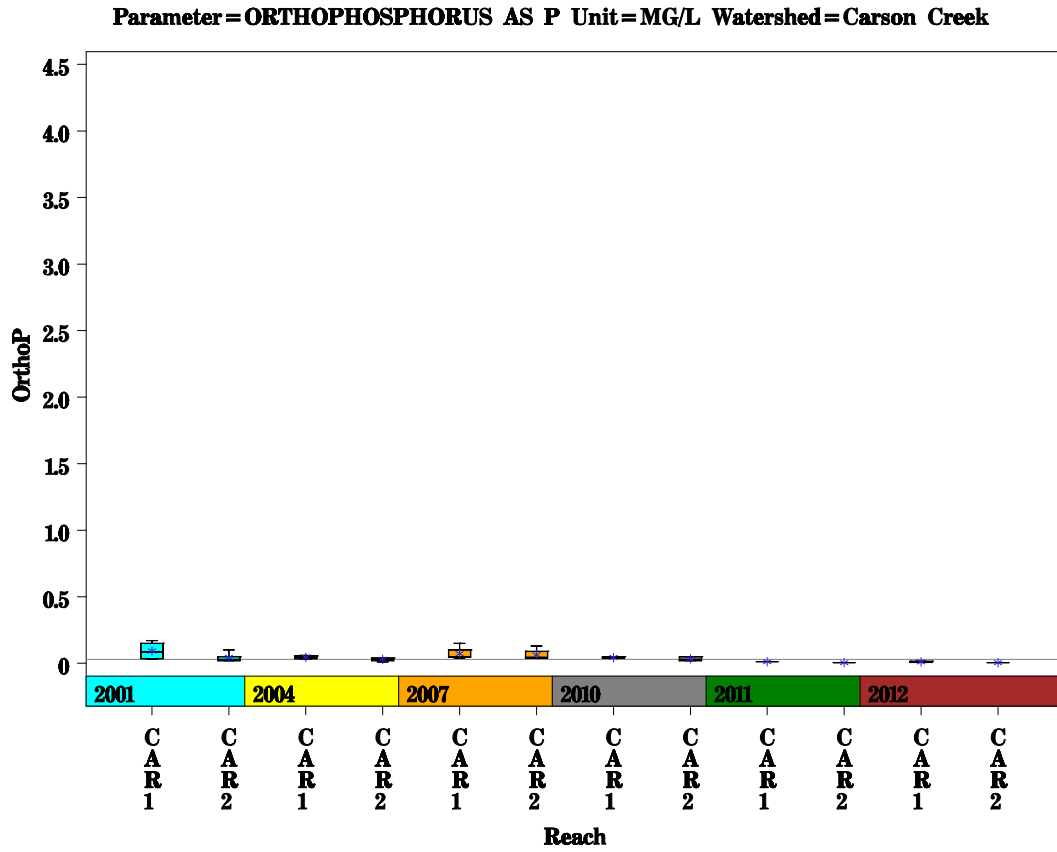


Parameter=NITRATE AS N Unit=MG/L Watershed=Carson Creek



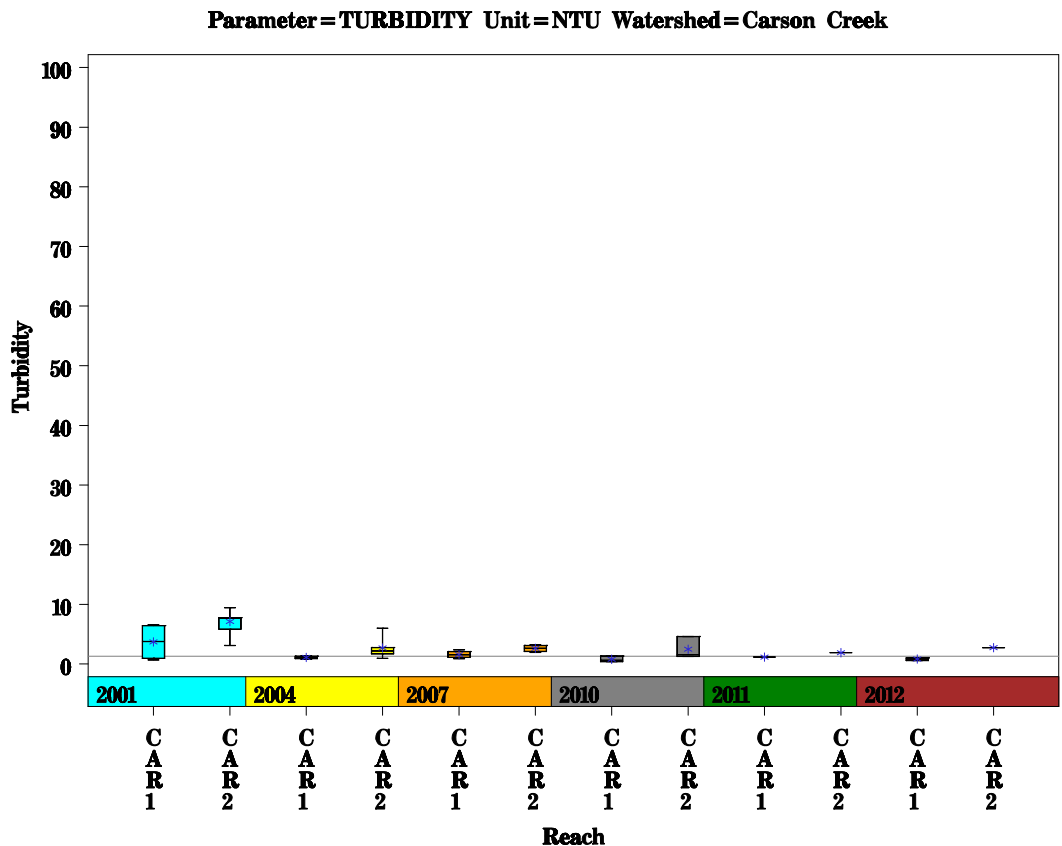
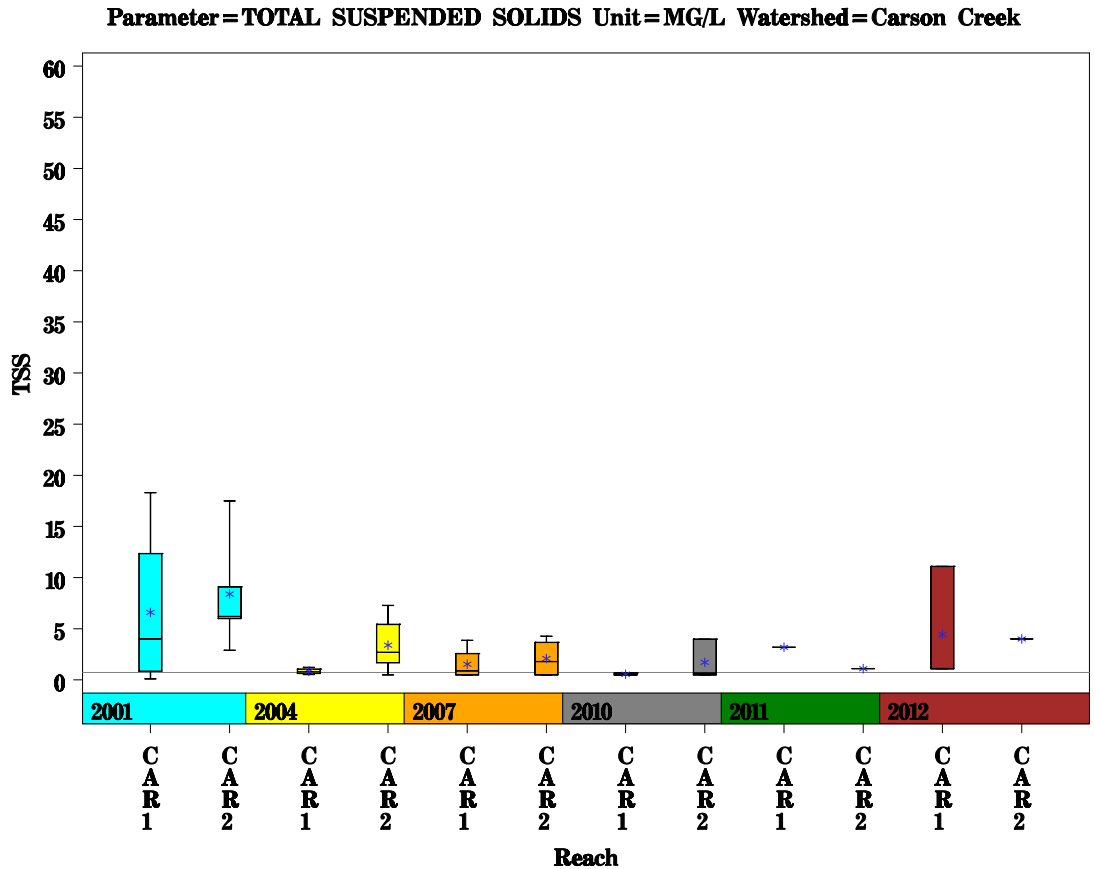
Carson Creek Watershed

Data Summary Graphs – Orthophosphate and E.coli (Downstream to Upstream by Year)



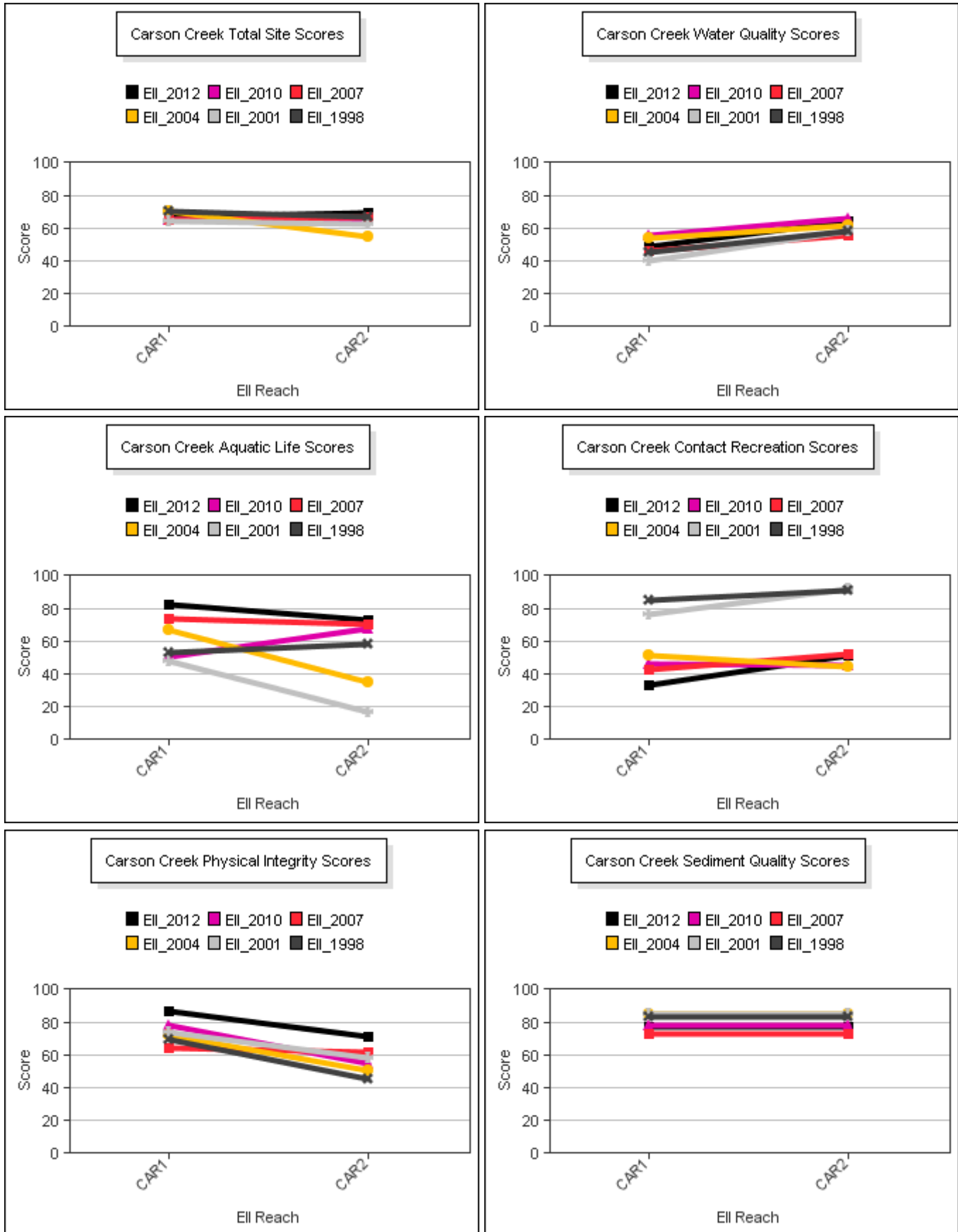
Carson Creek Watershed

Data Summary Graphs – Total Suspended Solids and Turbidity (Downstream to Upstream by Year)



Carson Creek Watershed

Score Summary – Reach scores for each sample year



Carson Creek Watershed

Site Photographs



1094_t00-us-05_20_2004



1094_ur_06_19_2007



1094_00-us-05_18_2010



1094_00-ds-05_18_2010



1095_t00-us-05_20_2004



1095_t00-ds-05_20_2004

Carson Creek Watershed

Site Photographs



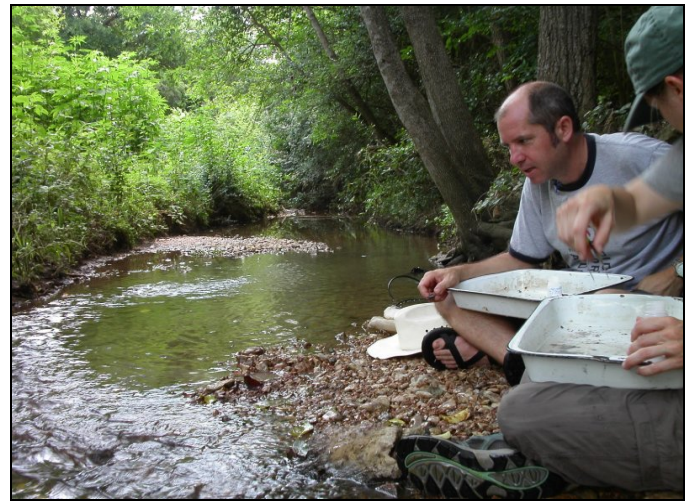
1096_t00-ur-05_18_2004



1096_t00-ds-05_18_2004



1096_ur_06_19_2007



1096_ds_06_19_2007



1096_00-ur-05_18_2010



1096_00-ds-05_18_2010

This page left intentionally blank