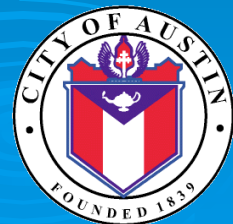


Water Treatment Plant 4

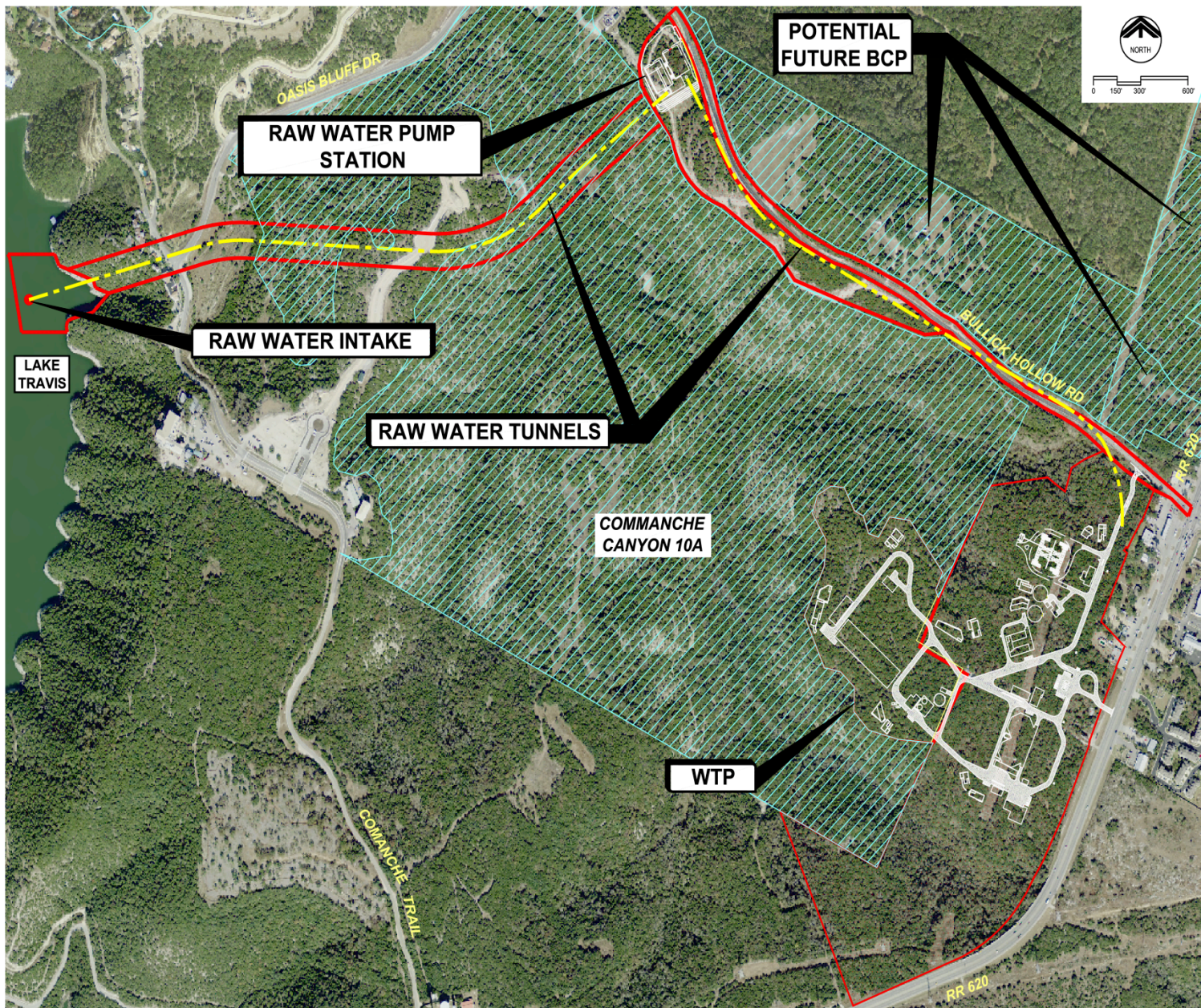
Bullick Hollow Road Ductbank
Construction

Village of Volente Council Meeting

January 18, 2011



WTP 4 Overview





727.520.8181
www.aerophoto.com

City of Austin, TX Water Treatment Plant #4

Image # 101108 6011
Date 11.08.10

Electrical Power Supply to the Raw Water Pump Station (RWPS)

- Dual feed electrical service and communications lines required for operation of the RWPS facility
- Four (4) alternatives studied to provide service from WTP4 site to RWPS site.
 - Ductbank (underground electrical conduit) running down Bullick Hollow Road ROW
 - Electrical and communications lines in tunnel
 - Overhead electrical lines over Comanche Canyon Preserve and through RWPS site
 - Overhead electrical lines over Comanche Canyon Preserve and ductbank in Bullick Hollow Road ROW.

Electrical Power Supply to the Raw Water Pump Station (RWPS)

➤ Constraints

- Prohibited from installing overhead electrical lines over Comanche Canyon Preserve.
- Prohibited from installing new overhead electrical lines on or adjacent to RWPS site due to deed restrictions.
- Ductbank requires pull boxes spaced at approximately 400 foot intervals
- Bullick Hollow Road ROW is a BCP Infrastructure Corridor.

Electrical Ductbanks

- What is a ductbank?
 - An underground electrical and communications conduit run.
 - Pull boxes required at approximately 400 foot intervals to provide access for installation and maintenance of the conduit.
 - A pull box looks like a manhole from the surface.

Bullick Hollow Road

- Travis County Right-of-Way
- BCP Infrastructure Corridor
- Surrounded by preserve lands
- Steep road slopes in some areas
- Congested with existing utilities
- Adjacent to Critical Environmental Features and Buffer Zones
- ROW exhibits several “pinch points”

Construction Methodology

➤ Daytime Construction

- Construction time 7 a.m. to 5 p.m.
- Daytime lane closures resulting in high traffic impact
- Approximate 6-8 month construction period
- Heavy construction traffic in daytime hours
- Construction duration could extend into beginning of peak season

➤ Nighttime Construction

- Construction time 8 p.m. to 6 a.m.
- Nighttime full road closure from RR 620 to Oasis Bluff
- Alternate routes provided
- Approximate 4-6 month construction period
- Full use of Bullick Hollow Road in daytime and weekends
- Increased safety for daytime commuters/traffic

BCP Infrastructure Void Mitigation Protocols - Delays for void mitigation investigation could impact construction period duration.

Bullick Hollow Road

➤ Previous Bullick Hollow Road Improvements

- Widening of east and west bound lanes near RWPS site
- Addition of acceleration lane east bound from RWPS site.
- Addition of turning lanes to WTP4 and RWPS.
- Stormwater conveyance, collection, and treatment improvements

Community Outreach

➤ Community outreach effort consists notification and updates to:

- Travis County Precinct 3 Commissioner Karen Huber
- Travis County TNR
- Village of Volente Council Members
- Volente Neighborhood Association
- Volente Fire Department ESD 14
- Lake Travis Fire Rescue ESD 6
- Austin Fire Department (2 stations near plant site)
- Travis County Sheriff's Office West Command
- US Post Office
- Comanche Trail Community Association
- Leander ISD bus route managers
- TxDOT
- Surrounding businesses and property owners

Next Steps

- Identify potential improvements to Bullick Hollow Road
 - Revegetate roadside with wild flowers
 - Expand acceleration lane to top of hill
 - Improve/add shoulders to Bullick Hollow Road
 - Increase lane width
- Complete design process
- Permitting through City of Austin, Travis County, and BCP

Bullick Hollow Road Ductbank

Questions and Comments?

