

A teal ribbon graphic with a folded end on the left, spanning across the top of the page. It contains the text "FM 969 CORRIDOR" and "APPENDIX D".

FM 969 CORRIDOR

APPENDIX D

D

**TRAFFIC CRASH DATA ANALYSIS
TECHNICAL MEMORANDUM**



TECHNICAL MEMORANDUM

Client: **City of Austin**
Project Name: **FM 969 Corridor Study**
Location: **Austin, Texas**
Project Number:
Issue Date: **June 11, 2012**

TO: **City of Austin**

FROM: **URS Team**

SUBJECT: **Traffic Crash Data Analysis Technical Memorandum**

The purpose of this memo is to summarize the methodology and results of URS team's crash data analysis for FM 969.

Reported traffic crash data for FM 969 between US 183 and Webberville were provided by TxDOT in August 2011. A total of 251 crashes were reported between 2008 and 2010 as shown at the end of this memo from **Tables 6 to 8**. The URS team summarized the crash data by severity and location and calculated crash rates by intersections and roadway segments. These rates were then compared to the Texas statewide crash rates for similar roadways and the roadway segment with higher than average crash rate was identified.

1. Crash Data Summary

Table 1 summarizes the reported historical crash data by severity.

Table 1: Summary of FM 969 Historical Crash Data by Severity

Year	Fatal	Injury	PDO	Total
2008	3	47	43	93
2009	1	42	38	81
2010	2	38	37	77
Total	6	127	118	251

The crashes were mapped based on the reported GPS coordinates. If a crash was located within the functional area of a study intersection, it was identified as intersection related. Otherwise it was identified as non-intersection related. **Table 2** summarizes the reported historical crash data by location.

Table 2: Summary of FM 969 Historical Crash Data by Location

Location	Fatal	Injury	PDO	Total
Intersection Related	2	73	58	133
Non-Intersection Related	4	54	60	118

2. Crash Rates by Intersection

Crash rate by intersection normalizes the reported crashes at an intersection to exposure in terms of million entering vehicles (MEV). The MEV is calculated as:

$$MEV = \frac{TEV}{1,000,000} \times 365$$

Where: TEV = total daily entering vehicles at an intersection.

The crash rate is the reported crashes divided by the MEV. **Tables 3A-3C** provide a summary of the average crash rates between 2008 and 2010 for FM 969. The TEV was estimated using the 2011 TMC counts.

The intersection at Imperial Drive experienced the highest total crash rate between 2008 and 2010. The intersection at Craigwood Drive was the only one with fatal crashes in 2008 and 2010.

Table 3A: FM 969 Crash Rates by Intersection in 2008

Intersection	TEV (vpd)	Number of Traffic Crashes				Traffic Crashes per MEV			
		Fatal	Injury	PDO	Total	Fatal	Injury	PDO	Total
US 183	41,403	0	2	1	3	0.00	0.13	0.07	0.20
Craigwood Dr	33,524	1	0	0	1	0.08	0.00	0.00	0.08
Johnny Morris Rd	33,685	0	2	2	4	0.00	0.16	0.16	0.33
Sendero Hills Pkwy	31,744	0	1	3	4	0.00	0.09	0.26	0.35
Decker Ln/FM 3177	34,299	0	5	2	7	0.00	0.40	0.16	0.56
Imperial Dr	17,651	0	5	7	12	0.00	0.78	1.09	1.86
Blue Bluff Rd	16,146	0	2	2	4	0.00	0.34	0.34	0.68
FM 973	27,250	0	5	3	8	0.00	0.50	0.30	0.80
SH 130	19,865	0	1	0	1	0.00	0.14	0.00	0.14
Gilbert Rd	19,147	0	0	0	0	0.00	0.00	0.00	0.00
Hound Dog Trail	16,904	0	0	1	1	0.00	0.00	0.16	0.16
Hunters Bend/Delta Post	16,565	0	1	0	1	0.00	0.17	0.00	0.17
Taylor Ln	5,637	0	1	1	2	0.00	0.49	0.49	0.97

Table 3B: FM 969 Crash Rates by Intersection in 2009

Intersection	TEV (vpd)	Number of Traffic Crashes				Traffic Crashes per MEV			
		Fatal	Injury	PDO	Total	Fatal	Injury	PDO	Total
US 183	40,989	0	1	0	1	0.00	0.07	0.00	0.07
Craigwood Dr	33,189	0	0	0	0	0.00	0.00	0.00	0.00
Johnny Morris Rd	33,348	0	1	1	2	0.00	0.08	0.08	0.16
Sendero Hills Pkwy	31,427	0	3	1	4	0.00	0.26	0.09	0.35
Decker Ln/FM 3177	33,956	0	7	1	8	0.00	0.56	0.08	0.65
Imperial Dr	17,475	0	7	5	12	0.00	1.10	0.78	1.88
Blue Bluff Rd	15,985	0	0	2	2	0.00	0.00	0.34	0.34
FM 973	26,978	0	8	4	12	0.00	0.81	0.41	1.22
SH 130	19,667	0	0	2	2	0.00	0.00	0.28	0.28
Gilbert Rd	18,956	0	1	0	1	0.00	0.14	0.00	0.14
Hound Dog Trail	16,735	0	1	0	1	0.00	0.16	0.00	0.16
Hunters Bend/Delta Post	16,399	0	1	2	3	0.00	0.17	0.33	0.50
Taylor Ln	5,581	0	0	0	0	0.00	0.00	0.00	0.00

Table 3C: FM 969 Crash Rates by Intersection in 2010

Intersection	TEV (vpd)	Number of Traffic Crashes				Traffic Crashes per MEV			
		Fatal	Injury	PDO	Total	Fatal	Injury	PDO	Total
US 183	40,579	0	2	0	2	0.00	0.14	0.00	0.14
Craigwood Dr	32,857	1	0	0	1	0.08	0.00	0.00	0.08
Johnny Morris Rd	33,015	0	4	2	6	0.00	0.33	0.17	0.50
Sendero Hills Pkwy	31,113	0	2	5	7	0.00	0.18	0.44	0.62
Decker Ln/FM 3177	33,616	0	5	1	6	0.00	0.41	0.08	0.49
Imperial Dr	17,300	0	1	2	3	0.00	0.16	0.32	0.48
Blue Bluff Rd	15,825	0	1	0	1	0.00	0.17	0.00	0.17
FM 973	26,708	0	2	7	9	0.00	0.21	0.72	0.92
SH 130	19,470	0	0	1	1	0.00	0.00	0.14	0.14
Gilbert Rd	18,766	0	0	0	0	0.00	0.00	0.00	0.00
Hound Dog Trail	16,568	0	0	0	0	0.00	0.00	0.00	0.00
Hunters Bend/Delta Post	16,235	0	1	0	1	0.00	0.17	0.00	0.17
Taylor Ln	5,525	0	0	0	0	0.00	0.00	0.00	0.00

3. Crash Rate by Roadway Segment

Crash rate by segment is the reported crashes per 100 million vehicle miles of travel (100MVM) along the roadway segment. The 100MVM is calculated as:

$$100MVM = \frac{AADT \times L}{100,000,000} \times 365$$

Where: AADT = annual average daily traffic on the highway segment; L = segment length in miles measured between intersections.

The crash rate is the total crashes divided by the 100MVM. A summary of the crash rates for FM 969 between 2008 and 2010 is provided in **Tables 4A to 4C**. The segment AADT values were estimated using the 2010 TxDOT AADT and the 2011 ADT counts. All reported crashes, including those identified as intersection related, were accounted for in calculating the crash rates by segment.

Table 4A: FM 969 Crash Rates by Segment in 2008

Segment	AADT (vpd)	Length (mile)	Number of Traffic Crashes				Traffic Crashes per 100MVM			
			Fatal	Injury	PDO	Total	Fatal	Injury	PDO	Total
US 183 to Decker Ln/FM 3117	26,763	1.77	2	10	8	20	11.6	57.8	46.3	115.7
Decker Ln/FM 3117 to FM 973	16,537	2.11	1	23	21	45	7.9	180.6	164.9	353.3
FM 973 to Dunlap Rd	15,803	3.21	0	8	11	19	0.0	43.2	59.4	102.6
Dunlap Rd to Webberville	4,123	4.12	0	6	3	9	0.0	96.8	48.4	145.2

Table 4B: FM 969 Crash Rates by Segment in 2009

Segment	AADT (vpd)	Length (mile)	Number of Traffic Crashes				Traffic Crashes per 100MVM			
			Fatal	Injury	PDO	Total	Fatal	Injury	PDO	Total
US 183 to Decker Ln/FM 3117	26,495	1.77	0	14	4	18	0.0	81.8	23.4	105.2
Decker Ln/FM 3117 to FM 973	16,372	2.11	0	23	20	43	0.0	182.4	158.6	341.0
FM 973 to Dunlap Rd	15,645	3.21	1	5	11	17	5.5	27.3	60.0	92.7
Dunlap Rd to Webberville	4,082	4.12	0	0	3	3	0.0	0.0	48.9	48.9

Table 4C: FM 969 Crash Rates by Segment in 2010

Segment	AADT (vpd)	Length (mile)	Number of Traffic Crashes				Traffic Crashes per 100MVM			
			Fatal	Injury	PDO	Total	Fatal	Injury	PDO	Total
US 183 to Decker Ln/FM 3117	26,230	1.77	1	15	9	25	5.9	88.5	53.1	147.5
Decker Ln/FM 3117 to FM 973	16,208	2.11	1	15	17	33	8.0	120.2	136.2	264.4
FM 973 to Dunlap Rd	15,489	3.21	0	8	7	15	0.0	44.1	38.6	82.7
Dunlap Rd to Webberville	4,041	4.12	0	0	4	4	0.0	0.0	65.8	65.8

TxDOT maintains a statewide automated database for all reported motor vehicle traffic crashes since 2003, and the statistics are available through TxDOT's website. The Texas statewide crash rates between 2008 and 2010 are listed in **Table 5**.

Table 5: Texas Statewide Crash Rates

Roadway Characteristic	Traffic Crashes per 100 million vehicle miles in Urban Area		
	2008	2009	2010
4 or more lanes, undivided	298.86	281.29	268.59

For a comparable facility, the statewide crash rates experienced a downtrend from 2008 to 2010, and the crash rates on FM 969 showed a similar downtrend in the same time period. The crash rates for the segment between Decker Lane/FM 3117 and FM 973 are notably higher than the statewide average in 2008 and 2009, and just below the statewide average in 2010. The other three segments all experienced crash rates well below the statewide average between 2008 and 2010.

Figure 1 shows the reported traffic crashes on FM 969 between Decker Lane/FM 3117 and FM 973. There are two areas with high concentration of reported crashes and further safety studies are recommended.

- "Park at Woodlands Drive" and "Bantom Woods Bend" are both unsignalized intersections situated on horizontal and vertical curves. There were 21 reported crashes between 2008 and 2010 along the short segment (nearly 800 feet) between the two intersections.

- “Imperial Drive” is a signalized intersection situated near a horizontal curve. There were 36 reported crashes between 2008 and 2010 within approximately 500 feet to the west of the intersection.

Figure 1: Reported Crashes on FM 969 between Decker Lane/FM 3117 and FM 973

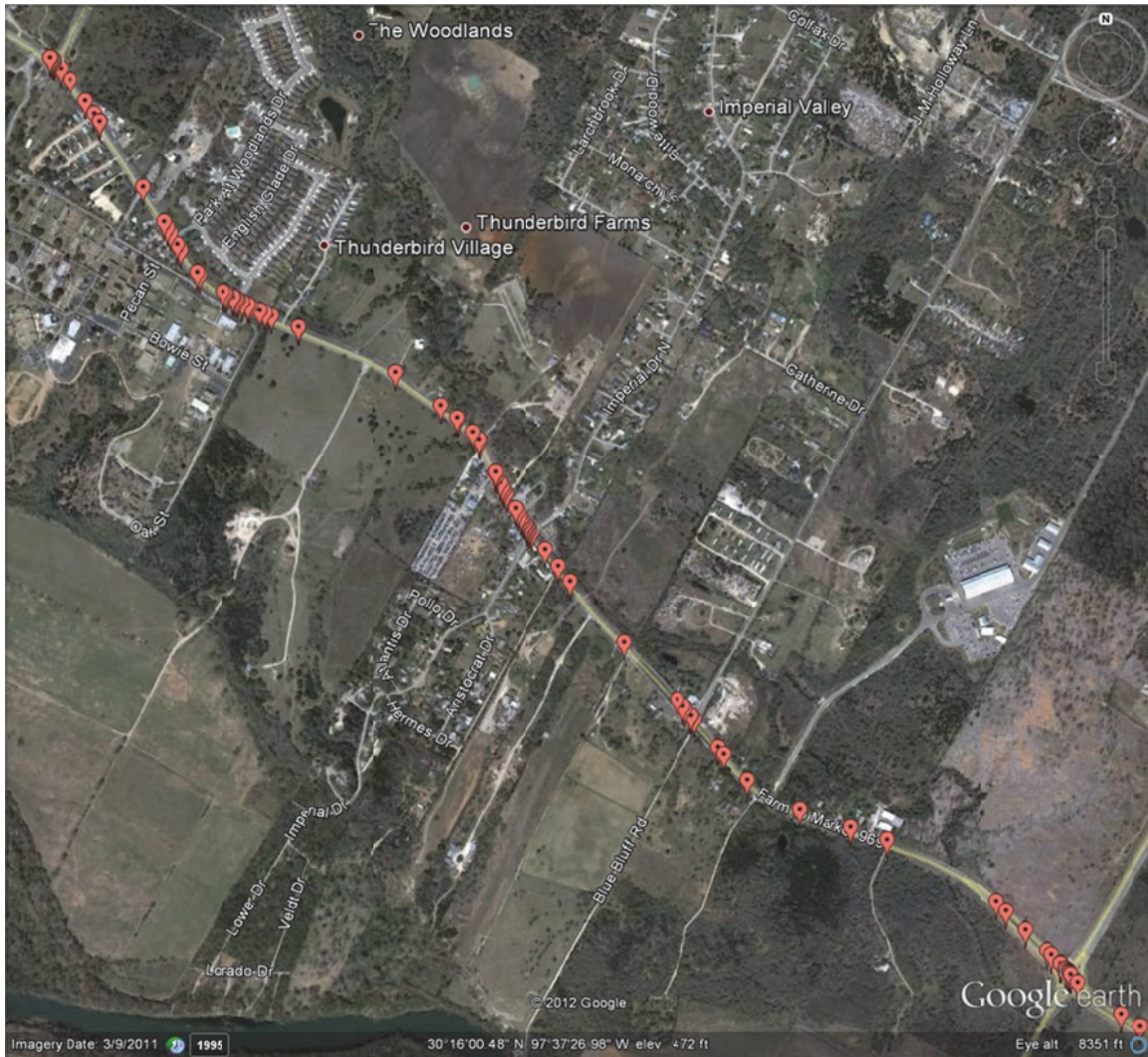


Table 6 - Raw Crash Data in FM 969 Corridor in Year 2008

Crash Latitude	Crash Longitude	Crash Time	Intersecting Road	Intersection Related	Crash Severity	Light Condition	Weather Condition	Manner of Collision	Vehicle Unit Description	Vehicle Direction of Travel	Total Vehicles
30.26200959	-97.62066493	12:00 AM	N/A	NON INTERSECTION	NOT INJURED	NO DATA	CLEAR/CLOUDY	OMV VEHICLE GOING STRAIGHT	MOTOR VEHICLE	WEST	1
30.24886546	-97.57531291	12:07 AM	N/A	NON INTERSECTION	NOT INJURED	DARK, NOT LIGHTED	CLEAR/CLOUDY	OMV VEHICLE GOING STRAIGHT	MOTOR VEHICLE	WEST	1
30.24972754	-97.52437236	12:54 AM	N/A	NON INTERSECTION	NOT INJURED	DARK, NOT LIGHTED	SLEET/HAIL	OMV VEHICLE GOING STRAIGHT	MOTOR VEHICLE	EAST	1
30.27144819	-97.63213907	12:58 AM	N/A	NON INTERSECTION	NOT INJURED	NO DATA	NO DATA	OMV VEHICLE GOING STRAIGHT	NON CONTACT	WEST	1
30.25501766	-97.55108421	1:15 AM	N/A	NON INTERSECTION	POSSIBLE INJURY	DARK, NOT LIGHTED	CLEAR/CLOUDY	OMV VEHICLE GOING STRAIGHT	MOTOR VEHICLE	EAST	1
30.2732217	-97.63442804	1:15 AM	N/A	DRIVEWAY ACCESS	NOT INJURED	NO DATA	CLEAR/CLOUDY	SD ONE STRAIGHT-ONE STOPPED	MOTOR VEHICLE	EAST	1
30.26912932	-97.62719941	2:01 AM	N/A	NON INTERSECTION	INCAPACITATING INJURY	DARK, NOT LIGHTED	CLEAR/CLOUDY	OD BOTH GOING STRAIGHT	MOTOR VEHICLE	EAST	1
30.27680779	-97.63726807	2:30 AM	FM3177	INTERSECTION RELATED	UNKNOWN	DARK, NOT LIGHTED	CLEAR/CLOUDY	OMV VEHICLE GOING STRAIGHT	MOTOR VEHICLE	NO DATA	1
30.25727553	-97.61204902	3:07 AM	N/A	NON INTERSECTION	POSSIBLE INJURY	DARK, NOT LIGHTED	CLEAR/CLOUDY	OMV VEHICLE GOING STRAIGHT	MOTOR VEHICLE	WEST	1
30.25356366	-97.53352173	3:20 AM	N/A	NON INTERSECTION	INCAPACITATING INJURY	DARK, NOT LIGHTED	CLEAR/CLOUDY	OMV VEHICLE GOING STRAIGHT	MOTOR VEHICLE	EAST	1
30.2855597	-97.66478943	3:22 AM	N/A	NON INTERSECTION	UNKNOWN	DARK, LIGHTED	CLEAR/CLOUDY	OMV VEHICLE GOING STRAIGHT	MOTOR VEHICLE	EAST	1
30.2561702	-97.55400975	3:46 AM	N/A	NON INTERSECTION	UNKNOWN	NO DATA	CLEAR/CLOUDY	OMV VEHICLE GOING STRAIGHT	MOTOR VEHICLE	EAST	1
30.2561702	-97.55400975	3:46 AM	N/A	NON INTERSECTION	NOT INJURED	NO DATA	CLEAR/CLOUDY	OMV VEHICLE GOING STRAIGHT	MOTOR VEHICLE	EAST	1
30.25746763	-97.61227294	4:02 AM	N/A	NON INTERSECTION	NON-INCAPACITATING	DARK, NOT LIGHTED	CLEAR/CLOUDY	OMV VEHICLE GOING STRAIGHT	MOTOR VEHICLE	UNKNOWN	1
30.26912932	-97.62719941	4:30 AM	N/A	NON INTERSECTION	UNKNOWN	DARK, NOT LIGHTED	CLEAR/CLOUDY	SD BOTH GOING STRAIGHT-REAR END	MOTOR VEHICLE	NOT APPLICABLE	1
30.25241389	-97.60108002	4:34 AM	N/A	NON INTERSECTION	NON-INCAPACITATING	DARK, NOT LIGHTED	CLEAR/CLOUDY	OMV VEHICLE GOING STRAIGHT	MOTOR VEHICLE	EAST	1
30.24763117	-97.58180677	5:10 AM	N/A	NON INTERSECTION	POSSIBLE INJURY	DARK, LIGHTED	CLEAR/CLOUDY	OMV VEHICLE GOING STRAIGHT	MOTOR VEHICLE	WEST	1
30.2847264	-97.65981549	5:21 AM	US0183	INTERSECTION	FATAL	DARK, NOT LIGHTED	CLEAR/CLOUDY	OMV VEHICLE GOING STRAIGHT	MOTOR VEHICLE	EAST	1
30.2570858	-97.61183167	5:25 AM	FM0973	INTERSECTION	POSSIBLE INJURY	DARK, NOT LIGHTED	FOG	ANGLE - BOTH GOING STRAIGHT	MOTOR VEHICLE	WEST	1
30.28117706	-97.64896788	5:51 AM	N/A	NON INTERSECTION	NOT INJURED	DAWN	CLEAR/CLOUDY	OMV VEHICLE GOING STRAIGHT	MOTOR VEHICLE	SOUTH	1
30.2570858	-97.61183167	6:15 AM	FM0973	INTERSECTION	NOT INJURED	DARK, NOT LIGHTED	CLEAR/CLOUDY	OD ONE STRAIGHT-ONE LEFT TURN	MOTOR VEHICLE	WEST	1
30.26701073	-97.62563536	6:20 AM	N/A	DRIVEWAY ACCESS	NOT INJURED	DARK, NOT LIGHTED	CLEAR/CLOUDY	OD ONE STRAIGHT-ONE LEFT TURN	MOTOR VEHICLE	EAST	1
30.27680779	-97.63726807	6:25 AM	FM3177	INTERSECTION	POSSIBLE INJURY	DARK, NOT LIGHTED	CLEAR/CLOUDY	OD ONE STRAIGHT-ONE LEFT TURN	MOTOR VEHICLE	WEST	1
30.25862811	-97.61363551	6:50 AM	N/A	NON INTERSECTION	POSSIBLE INJURY	DARK, NOT LIGHTED	CLEAR/CLOUDY	OMV VEHICLE GOING STRAIGHT	MOTOR VEHICLE	EAST	1
30.24817898	-97.57944203	7:05 AM	CADILLAC DR	INTERSECTION RELATED	NON-INCAPACITATING	DAWN	CLEAR/CLOUDY	SD ONE STRAIGHT-ONE STOPPED	MOTOR VEHICLE	WEST	1
30.27550749	-97.63610217	7:21 AM	N/A	DRIVEWAY ACCESS	NOT INJURED	DAYLIGHT	CLEAR/CLOUDY	ANGLE - BOTH GOING STRAIGHT	MOTOR VEHICLE	NO DATA	1
30.25422255	-97.60570303	7:40 AM	N/A	NON INTERSECTION	POSSIBLE INJURY	DAYLIGHT	CLEAR/CLOUDY	OMV VEHICLE GOING STRAIGHT	MOTOR VEHICLE	EAST	1
30.27680779	-97.63726807	8:35 AM	FM3177	INTERSECTION	NON-INCAPACITATING	DAYLIGHT	CLEAR/CLOUDY	ANGLE - BOTH GOING STRAIGHT	MOTOR VEHICLE	NORTH	1
30.26683235	-97.6254838	8:35 AM	N/A	NON INTERSECTION	POSSIBLE INJURY	DAYLIGHT	CLEAR/CLOUDY	SD BOTH GOING STRAIGHT-REAR END	MOTOR VEHICLE	WEST	1
30.28279341	-97.65317353	8:36 AM	JOHNNY MORRIS RD	INTERSECTION	NOT INJURED	DAYLIGHT	CLEAR/CLOUDY	OD ONE STRAIGHT-ONE BACKING	MOTOR VEHICLE	EAST	1
30.26914543	-97.62722253	8:47 AM	N/A	NON INTERSECTION	NOT INJURED	DARK, NOT LIGHTED	CLEAR/CLOUDY	OMV VEHICLE GOING STRAIGHT	MOTOR VEHICLE	NO DATA	1
30.28279341	-97.65317353	9:10 AM	JOHNNY MORRIS RD	INTERSECTION RELATED	NOT INJURED	DAYLIGHT	CLEAR/CLOUDY	SD ONE STRAIGHT-ONE STOPPED	MOTOR VEHICLE	WEST	1
30.26795848	-97.62627078	9:19 AM	N/A	NON INTERSECTION	NON-INCAPACITATING	DAYLIGHT	CLEAR/CLOUDY	OD BOTH GOING STRAIGHT	MOTOR VEHICLE	SOUTH	1
30.28565216	-97.6654129	9:28 AM	N/A	NON INTERSECTION	POSSIBLE INJURY	DAYLIGHT	CLEAR/CLOUDY	SD BOTH GOING STRAIGHT-REAR END	MOTOR VEHICLE	EAST	1
30.27139797	-97.632007	9:33 AM	N/A	DRIVEWAY ACCESS	NON-INCAPACITATING	DAYLIGHT	CLEAR/CLOUDY	SD ONE STRAIGHT-ONE RIGHT TURN	MOTOR VEHICLE	WEST	1
30.2481813	-97.57941041	9:45 AM	CADILLAC DR	INTERSECTION	NOT INJURED	NO DATA	CLEAR/CLOUDY	ANGLE - BOTH GOING STRAIGHT	MOTOR VEHICLE	EAST	1
30.27680779	-97.63726807	9:48 AM	FM3177	INTERSECTION	NOT INJURED	DAYLIGHT	CLEAR/CLOUDY	OD ONE STRAIGHT-ONE LEFT TURN	MOTOR VEHICLE	WEST	1
30.27011616	-97.62873768	9:50 AM	N/A	NON INTERSECTION	NOT INJURED	DAYLIGHT	CLEAR/CLOUDY	OMV VEHICLE GOING STRAIGHT	MOTOR VEHICLE	WEST	1
30.28086486	-97.64815478	10:15 AM	N/A	DRIVEWAY ACCESS	NOT INJURED	DAYLIGHT	CLEAR/CLOUDY	SD ONE STRAIGHT-ONE STOPPED	MOTOR VEHICLE	WEST	1
									MOTOR VEHICLE	NO DATA	1

Table 6 - Raw Crash Data in FM 969 Corridor in Year 2008											
Crash Latitude	Crash Longitude	Crash Time	Intersecting Road	Intersection Related	Crash Severity	Light Condition	Weather Condition	Manner of Collision	Vehicle Unit Description	Vehicle Direction of Travel	Total Vehicles
30.27184973	-97.63305294	10:35 AM	N/A	NON INTERSECTION	POSSIBLE INJURY	DAYLIGHT	CLEAR/CLOUDY	OMV VEHICLE GOING STRAIGHT	MOTOR VEHICLE	WEST	1
									MOTOR VEHICLE	EAST	1
									MOTOR VEHICLE	NO DATA	1
30.28103034	-97.64859122	10:47 AM	N/A	DRIVEWAY ACCESS	NOT INJURED	DAYLIGHT	CLEAR/CLOUDY	OD ONE STRAIGHT-ONE LEFT TURN	MOTOR VEHICLE	WEST	1
									MOTOR VEHICLE	NO DATA	1
									MOTOR VEHICLE	EAST	1
30.2479357	-97.58461573	10:50 AM	N/A	DRIVEWAY ACCESS	NOT INJURED	DAYLIGHT	CLEAR/CLOUDY	SD ONE STRAIGHT-ONE LEFT TURN	MOTOR VEHICLE	WEST	1
									MOTOR VEHICLE	WEST	1
30.27682467	-97.63728932	10:57 AM	FM3177	INTERSECTION RELATED	NON-INCAPACITATING	DAYLIGHT	CLEAR/CLOUDY	OD BOTH GOING STRAIGHT	MOTOR VEHICLE	NORTH	1
									MOTOR VEHICLE	SOUTH	1
30.25155746	-97.59661122	11:51 AM	N/A	NON INTERSECTION	NOT INJURED	NO DATA	CLEAR/CLOUDY	OMV VEHICLE GOING STRAIGHT	MOTOR VEHICLE	EAST	1
30.28085444	-97.64812552	12:12 PM	N/A	NON INTERSECTION	NOT INJURED	DAYLIGHT	CLEAR/CLOUDY	SD BOTH GOING STRAIGHT-REAR END	MOTOR VEHICLE	WEST	1
									MOTOR VEHICLE	NO DATA	1
30.28538787	-97.66368667	12:13 PM	N/A	NON INTERSECTION	NOT INJURED	DAYLIGHT	CLEAR/CLOUDY	SD ONE STRAIGHT-ONE STOPPED	MOTOR VEHICLE	WEST	1
									MOTOR VEHICLE	WEST	1
30.24747027	-97.58305112	12:14 PM	HUNTERS BEND RD	INTERSECTION RELATED	NON-INCAPACITATING	DAYLIGHT	CLEAR/CLOUDY	SD ONE STRAIGHT-ONE STOPPED	MOTOR VEHICLE	EAST	1
									MOTOR VEHICLE	EAST	1
30.24817898	-97.57944203	1:05 PM	CADILLAC DR	INTERSECTION RELATED	INCAPACITATING INJURY	DAYLIGHT	CLEAR/CLOUDY	SD ONE STRAIGHT-ONE STOPPED	MOTOR VEHICLE	EAST	1
									MOTOR VEHICLE	NO DATA	1
									MOTOR VEHICLE	EAST	1
30.24817898	-97.57944203	1:05 PM	CADILLAC DR	INTERSECTION RELATED	INCAPACITATING INJURY	DAYLIGHT	CLEAR/CLOUDY	OD BOTH GOING STRAIGHT	MOTOR VEHICLE	NO DATA	1
									MOTOR VEHICLE	EAST	1
									MOTOR VEHICLE	WEST	1
30.26673489	-97.62539615	1:20 PM	N IMPERIAL DR	INTERSECTION	NON-INCAPACITATING	DAYLIGHT	CLEAR/CLOUDY	ANGLE - BOTH GOING STRAIGHT	MOTOR VEHICLE	NORTH	1
									MOTOR VEHICLE	EAST	1
30.28509853	-97.66196707	1:32 PM	REGENCY DR	INTERSECTION	FATAL	DAYLIGHT	CLEAR/CLOUDY	ANGLE - BOTH GOING STRAIGHT	MOTOR VEHICLE	WEST	1
									MOTOR VEHICLE	NORTH	1
30.26717727	-97.62577658	1:45 PM	N/A	DRIVEWAY ACCESS	NOT INJURED	NO DATA	NO DATA	ANGLE - ONE STRAIGHT-ONE RIGHT TURN	MOTOR VEHICLE	NORTH	1
									MOTOR VEHICLE	EAST	1
30.26912932	-97.62719941	1:55 PM	N/A	NON INTERSECTION	INCAPACITATING INJURY	DAYLIGHT	CLEAR/CLOUDY	OMV VEHICLE GOING STRAIGHT	MOTOR VEHICLE	WEST	1
									MOTOR VEHICLE	WEST	1
30.2570858	-97.61183167	2:00 PM	FM0973	INTERSECTION	NON-INCAPACITATING	DAYLIGHT	CLEAR/CLOUDY	OD ONE STRAIGHT-ONE LEFT TURN	MOTOR VEHICLE	NO DATA	1
									MOTOR VEHICLE	EAST	1
30.27180336	-97.63294901	2:04 PM	N/A	NON INTERSECTION	NON-INCAPACITATING	DAYLIGHT	CLEAR/CLOUDY	OMV VEHICLE GOING STRAIGHT	MOTOR VEHICLE	EAST	1
30.24831438	-97.52235365	2:12 PM	N/A	NON INTERSECTION	POSSIBLE INJURY	DAYLIGHT	RAIN	OMV VEHICLE GOING STRAIGHT	MOTOR VEHICLE	EAST	1
30.26711065	-97.62572009	2:25 PM	N/A	NON INTERSECTION	NOT INJURED	DAYLIGHT	CLEAR/CLOUDY	OD BOTH GOING STRAIGHT	MOTOR VEHICLE	WEST	1
									MOTOR VEHICLE	EAST	1
30.28279341	-97.65317353	2:29 PM	JOHNNY MORRIS RD	INTERSECTION	NON-INCAPACITATING	DAYLIGHT	CLEAR/CLOUDY	ANGLE - BOTH GOING STRAIGHT	MOTOR VEHICLE	EAST	1
									MOTOR VEHICLE	SOUTH	1
30.26883493	-97.62683749	2:40 PM	N/A	NON INTERSECTION	FATAL	DAYLIGHT	CLEAR/CLOUDY	OD BOTH GOING STRAIGHT	MOTOR VEHICLE	EAST	1
									MOTOR VEHICLE	WEST	1
30.2630428	-97.62169064	3:00 PM	N/A	NON INTERSECTION	NOT INJURED	DAYLIGHT	CLEAR/CLOUDY	SD ONE STRAIGHT-ONE STOPPED	MOTOR VEHICLE	EAST	1
									MOTOR VEHICLE	EAST	1
30.25686781	-97.61162239	3:42 PM	N/A	NON INTERSECTION	NOT INJURED	DAYLIGHT	CLEAR/CLOUDY	SD BOTH GOING STRAIGHT-SIDESWIPE	MOTOR VEHICLE	EAST	1
									MOTOR VEHICLE	EAST	1
30.28279341	-97.65317353	3:44 PM	JOHNNY MORRIS RD	INTERSECTION	POSSIBLE INJURY	DAYLIGHT	CLEAR/CLOUDY	OD ONE STRAIGHT-ONE LEFT TURN	MOTOR VEHICLE	EAST	1
									MOTOR VEHICLE	WEST	1
30.25084859	-97.59242298	3:52 PM	N/A	NON INTERSECTION	POSSIBLE INJURY	DAYLIGHT	CLEAR/CLOUDY	OD ONE STRAIGHT-ONE LEFT TURN	MOTOR VEHICLE	EAST	1
									MOTOR VEHICLE	WEST	1
30.24817782	-97.57945783	4:20 PM	N/A	NON INTERSECTION	NOT INJURED	DAYLIGHT	CLEAR/CLOUDY	SD ONE STRAIGHT-ONE STOPPED	MOTOR VEHICLE	EAST	1
									MOTOR VEHICLE	EAST	1
30.24728302	-97.5213166	4:42 PM	N/A	NON INTERSECTION	NOT INJURED	DAYLIGHT	CLEAR/CLOUDY	OMV VEHICLE GOING STRAIGHT	MOTOR VEHICLE	EAST	1
30.2686733	-97.62668324	4:45 PM	N/A	NON INTERSECTION	NOT INJURED	DAYLIGHT	CLEAR/CLOUDY	SD BOTH GOING STRAIGHT-SIDESWIPE	MOTOR VEHICLE	WEST	1
									MOTOR VEHICLE	WEST	1
30.2629037	-97.62153929	4:54 PM	N/A	DRIVEWAY ACCESS	POSSIBLE INJURY	DAYLIGHT	CLEAR/CLOUDY	SD ONE STRAIGHT-ONE STOPPED	MOTOR VEHICLE	EAST	1
									MOTOR VEHICLE	EAST	1
30.26678254	-97.625439	5:08 PM	N/A	DRIVEWAY ACCESS	POSSIBLE INJURY	DAYLIGHT	CLEAR/CLOUDY	SD ONE STRAIGHT-ONE RIGHT TURN	MOTOR VEHICLE	EAST	1
									MOTOR VEHICLE	EAST	1
30.2668442	-97.62549415	5:28 PM	N/A	NON INTERSECTION	POSSIBLE INJURY	DAYLIGHT	CLEAR/CLOUDY	SD BOTH GOING STRAIGHT-SIDESWIPE	MOTOR VEHICLE	EAST	1
									MOTOR VEHICLE	EAST	1
30.25022763	-97.58917699	5:35 PM	N/A	NON INTERSECTION	NOT INJURED	DAYLIGHT	CLEAR/CLOUDY	OMV VEHICLE GOING STRAIGHT	MOTOR VEHICLE	WEST	1
30.28246779	-97.65229939	5:37 PM	N/A	NON INTERSECTION	POSSIBLE INJURY	DAYLIGHT	CLEAR/CLOUDY	SD BOTH GOING STRAIGHT-SIDESWIPE	MOTOR VEHICLE	WEST	1
									MOTOR VEHICLE	WEST	1

Table 6 - Raw Crash Data in FM 969 Corridor in Year 2008											
Crash Latitude	Crash Longitude	Crash Time	Intersecting Road	Intersection Related	Crash Severity	Light Condition	Weather Condition	Manner of Collision	Vehicle Unit Description	Vehicle Direction of Travel	Total Vehicles
30.25045615	-97.59028339	5:40 PM	N/A	NON INTERSECTION	NOT INJURED	DAYLIGHT	CLEAR/CLOUDY	SD BOTH GOING STRAIGHT-REAR END	MOTOR VEHICLE	EAST	1
									MOTOR VEHICLE	EAST	1
30.24825513	-97.58523435	5:45 PM	N/A	DRIVEWAY ACCESS	NOT INJURED	DAYLIGHT	CLEAR/CLOUDY	SD ONE STRAIGHT-ONE STOPPED	MOTOR VEHICLE	EAST	1
									MOTOR VEHICLE	EAST	1
30.26673489	-97.62539615	6:06 PM	N IMPERIAL DR	INTERSECTION RELATED	POSSIBLE INJURY	DAYLIGHT	CLEAR/CLOUDY	SD BOTH GOING STRAIGHT-SIDESWIPE	MOTOR VEHICLE	WEST	1
									MOTOR VEHICLE	WEST	1
30.26673489	-97.62539615	6:35 PM	N IMPERIAL DR	INTERSECTION	NOT INJURED	DAYLIGHT	CLEAR/CLOUDY	ANGLE - BOTH GOING STRAIGHT	MOTOR VEHICLE	WEST	1
									MOTOR VEHICLE	SOUTH	1
30.26673489	-97.62539615	6:48 PM	N IMPERIAL DR	INTERSECTION	NOT INJURED	DAYLIGHT	CLEAR/CLOUDY	SD ONE STRAIGHT-ONE RIGHT TURN	MOTOR VEHICLE	EAST	1
									MOTOR VEHICLE	EAST	1
30.26673489	-97.62539615	6:54 PM	N IMPERIAL DR	INTERSECTION RELATED	NOT INJURED	DAYLIGHT	CLEAR/CLOUDY	OMV VEHICLE GOING STRAIGHT	MOTOR VEHICLE	NOT APPLICABLE	1
									MOTOR VEHICLE	EAST	1
30.26285304	-97.62148576	7:01 PM	N/A	NON INTERSECTION	NOT INJURED	DARK, NOT LIGHTED	CLEAR/CLOUDY	OD BOTH GOING STRAIGHT	MOTOR VEHICLE	EAST	1
									MOTOR VEHICLE	WEST	1
30.24465821	-97.52232064	7:05 PM	N/A	NON INTERSECTION	INCAPACITATING INJURY	DARK, NOT LIGHTED	CLEAR/CLOUDY	OMV VEHICLE GOING STRAIGHT	MOTOR VEHICLE	WEST	1
									MOTOR VEHICLE	WEST	1
30.27640027	-97.63685374	7:10 PM	N/A	DRIVEWAY ACCESS	NOT INJURED	DARK, NOT LIGHTED	RAIN	OD ONE STRAIGHT-ONE LEFT TURN	MOTOR VEHICLE	EAST	1
									MOTOR VEHICLE	NO DATA	1
30.2570858	-97.61183167	7:12 PM	FM0973	INTERSECTION	NOT INJURED	DARK, LIGHTED	RAIN	OD ONE STRAIGHT-ONE LEFT TURN	MOTOR VEHICLE	WEST	1
									MOTOR VEHICLE	EAST	1
30.2491885	-97.58704196	7:40 PM	N/A	NON INTERSECTION	NOT INJURED	DAYLIGHT	CLEAR/CLOUDY	OD BOTH GOING STRAIGHT	MOTOR VEHICLE	EAST	1
									MOTOR VEHICLE	WEST	1
30.26673489	-97.62539615	7:57 PM	N IMPERIAL DR	INTERSECTION	NOT INJURED	DAYLIGHT	CLEAR/CLOUDY	OD ONE STRAIGHT-ONE LEFT TURN	MOTOR VEHICLE	WEST	1
									MOTOR VEHICLE	EAST	1
30.2570858	-97.61183167	8:54 PM	FM0973	INTERSECTION	NON-INCAPACITATING	DARK, NOT LIGHTED	CLEAR/CLOUDY	OD ONE STRAIGHT-ONE LEFT TURN	MOTOR VEHICLE	EAST	1
									MOTOR VEHICLE	NO DATA	1
									MOTOR VEHICLE	WEST	1
30.26269671	-97.62132929	9:45 PM	BLUE BLUFF RD	INTERSECTION RELATED	UNKNOWN	DARK, LIGHTED	CLEAR/CLOUDY	OMV VEHICLE TURNING LEFT	MOTOR VEHICLE	EAST	1
30.27181874	-97.63298349	9:45 PM	N/A	NON INTERSECTION	POSSIBLE INJURY	DARK, LIGHTED	CLEAR/CLOUDY	OMV VEHICLE GOING STRAIGHT	MOTOR VEHICLE	EAST	1
30.26694856	-97.62558264	9:55 PM	N/A	NON INTERSECTION	NOT INJURED	DARK, NOT LIGHTED	CLEAR/CLOUDY	SD BOTH GOING STRAIGHT-SIDESWIPE	MOTOR VEHICLE	EAST	1
									MOTOR VEHICLE	EAST	1
30.28081275	-97.64800843	9:57 PM	SENDERO HILLS PKWY	INTERSECTION RELATED	POSSIBLE INJURY	DARK, UNKNOWN LIGHTING	CLEAR/CLOUDY	ANGLE - ONE STRAIGHT-ONE LEFT TURN	MOTOR VEHICLE	SOUTH	1
									MOTOR VEHICLE	EAST	1
30.27334586	-97.63451194	10:26 PM	N/A	NON INTERSECTION	NOT INJURED	DARK, NOT LIGHTED	CLEAR/CLOUDY	OMV VEHICLE GOING STRAIGHT	MOTOR VEHICLE	WEST	1
30.24465821	-97.52232064	10:31 PM	N/A	NON INTERSECTION	NON-INCAPACITATING	DARK, NOT LIGHTED	CLEAR/CLOUDY	OMV VEHICLE GOING STRAIGHT	MOTOR VEHICLE	EAST	1
30.24834703	-97.57804924	10:55 PM	N/A	NON INTERSECTION	NOT INJURED	DARK, NOT LIGHTED	CLEAR/CLOUDY	OMV VEHICLE GOING STRAIGHT	MOTOR VEHICLE	WEST	1
30.27163117	-97.63256303	11:38 PM	N/A	NON INTERSECTION	UNKNOWN	DARK, LIGHTED	CLEAR/CLOUDY	OMV VEHICLE GOING STRAIGHT	MOTOR VEHICLE	EAST	1
30.27664224	-97.63709878	11:40 PM	N/A	NON INTERSECTION	POSSIBLE INJURY	DARK, NOT LIGHTED	CLEAR/CLOUDY	SD ONE STRAIGHT-ONE LEFT TURN	MOTOR VEHICLE	WEST	1
									MOTOR VEHICLE	WEST	1
										Total Vehicles	165
										Total Crashes	93

Table 7 - Raw Crash Data in FM 969 Corridor in Year 2009											
Crash Latitude	Crash Longitude	Crash Time	Intersecting Road	Intersection Related	Crash Severity	Light Condition	Weather Condition	Manner of Collision	Vehicle Unit Description	Vehicle Direction of Travel	Total Vehicles
30.27154342	-97.63236634	12:43 AM	N/A	NON INTERSECTION	NOT INJURED	DARK, NOT LIGHTED	CLEAR/CLOUDY	OMV VEHICLE GOING STRAIGHT	MOTOR VEHICLE	EAST	1
30.28284768	-97.65331921	1:34 AM	N/A	NON INTERSECTION	UNKNOWN	DARK, NOT LIGHTED	RAIN	OMV VEHICLE GOING STRAIGHT	MOTOR VEHICLE	EAST	1
30.27680779	-97.63726807	1:41 AM	FM3177	INTERSECTION	POSSIBLE INJURY	DARK, NOT LIGHTED	CLEAR/CLOUDY	ANGLE - ONE STRAIGHT-ONE LEFT TURN	MOTOR VEHICLE	EAST	1
									MOTOR VEHICLE	SOUTH	1
30.27680779	-97.63726807	1:43 AM	FM3177	INTERSECTION	POSSIBLE INJURY	DARK, LIGHTED	RAIN	ANGLE - ONE STRAIGHT-ONE LEFT TURN	MOTOR VEHICLE	EAST	1
									MOTOR VEHICLE	SOUTH	1
30.27680779	-97.63726807	1:46 AM	FM3177	INTERSECTION RELATED	POSSIBLE INJURY	DARK, LIGHTED	CLEAR/CLOUDY	OMV VEHICLE GOING STRAIGHT	MOTOR VEHICLE	SOUTH	1
30.26701652	-97.62564027	2:00 AM	N/A	NON INTERSECTION	NOT INJURED	DARK, LIGHTED	CLEAR/CLOUDY	OMV VEHICLE GOING STRAIGHT	MOTOR VEHICLE	EAST	1
30.26678902	-97.62544484	2:15 AM	N/A	NON INTERSECTION	POSSIBLE INJURY	NO DATA	CLEAR/CLOUDY	SD BOTH GOING STRAIGHT-REAR END	MOTOR VEHICLE	EAST	1
									MOTOR VEHICLE	EAST	1
30.27680779	-97.63726807	2:26 AM	FM3177	INTERSECTION	NON-INCAPACITATING	DARK, NOT LIGHTED	CLEAR/CLOUDY	ANGLE - ONE STRAIGHT-ONE RIGHT TURN	MOTOR VEHICLE	SOUTH	1
									MOTOR VEHICLE	EAST	1
30.2481813	-97.57941041	2:41 AM	CADILLAC DR	INTERSECTION	NOT INJURED	DARK, LIGHTED	CLEAR/CLOUDY	SD ONE STRAIGHT-ONE STOPPED	MOTOR VEHICLE	EAST	1
									MOTOR VEHICLE	EAST	1
30.2515098	-97.59598567	3:20 AM	N/A	NON INTERSECTION	UNKNOWN	DARK, NOT LIGHTED	CLEAR/CLOUDY	OMV VEHICLE GOING STRAIGHT	MOTOR VEHICLE	EAST	1
30.2570858	-97.61183167	3:45 AM	FM0973	INTERSECTION RELATED	POSSIBLE INJURY	DARK, LIGHTED	RAIN	OMV VEHICLE GOING STRAIGHT	MOTOR VEHICLE	SOUTH	1
30.26673489	-97.62539615	4:22 AM	N IMPERIAL DR	INTERSECTION	NOT INJURED	NO DATA	CLEAR/CLOUDY	SD ONE STRAIGHT-ONE RIGHT TURN	MOTOR VEHICLE	EAST	1
									MOTOR VEHICLE	NO DATA	1
									MOTOR VEHICLE	EAST	1
30.24765031	-97.52152037	4:24 AM	N/A	NON INTERSECTION	NOT INJURED	DARK, NOT LIGHTED	CLEAR/CLOUDY	OMV VEHICLE GOING STRAIGHT	MOTOR VEHICLE	EAST	1
30.25704823	-97.61180116	5:03 AM	FM0973	INTERSECTION RELATED	POSSIBLE INJURY	DARK, NOT LIGHTED	CLEAR/CLOUDY	OMV VEHICLE TURNING RIGHT	MOTOR VEHICLE	NORTH	1
30.26560968	-97.62438433	5:13 AM	N/A	NON INTERSECTION	NOT INJURED	DARK, NOT LIGHTED	CLEAR/CLOUDY	SD BOTH GOING STRAIGHT-REAR END	MOTOR VEHICLE	WEST	1
									MOTOR VEHICLE	WEST	1
30.28333319	-97.65463166	6:08 AM	N/A	NON INTERSECTION	UNKNOWN	DARK, LIGHTED	FOG	OMV VEHICLE GOING STRAIGHT	MOTOR VEHICLE	EAST	1
30.27109225	-97.63117846	6:38 AM	N/A	NON INTERSECTION	NOT INJURED	DARK, NOT LIGHTED	RAIN	SD ONE STRAIGHT-ONE LEFT TURN	MOTOR VEHICLE	WEST	1
									MOTOR VEHICLE	WEST	1
30.26795848	-97.62627078	7:10 AM	N/A	NON INTERSECTION	INCAPACITATING INJURY	DAWN	FOG	OD BOTH GOING STRAIGHT	MOTOR VEHICLE	NO DATA	1
									MOTOR VEHICLE	EAST	1
									MOTOR VEHICLE	WEST	1
30.28221982	-97.65164476	7:34 AM	N/A	NON INTERSECTION	POSSIBLE INJURY	DAYLIGHT	CLEAR/CLOUDY	SD BOTH GOING STRAIGHT-REAR END	MOTOR VEHICLE	NO DATA	1
									MOTOR VEHICLE	WEST	1
									MOTOR VEHICLE	NO DATA	1
									MOTOR VEHICLE	WEST	1
30.28081275	-97.64800843	7:41 AM	SENDERO HILLS PKWY	INTERSECTION RELATED	POSSIBLE INJURY	DAYLIGHT	CLEAR/CLOUDY	SD ONE STRAIGHT-ONE STOPPED	MOTOR VEHICLE	NO DATA	1
									MOTOR VEHICLE	WEST	1
									MOTOR VEHICLE	WEST	1
30.28086486	-97.64815478	7:44 AM	N/A	NON INTERSECTION	POSSIBLE INJURY	DAYLIGHT	CLEAR/CLOUDY	SD ONE STRAIGHT-ONE STOPPED	MOTOR VEHICLE	WEST	1
									MOTOR VEHICLE	WEST	1
30.2768781	-97.63736349	7:52 AM	N/A	NON INTERSECTION	NON-INCAPACITATING	DAYLIGHT	CLEAR/CLOUDY	OMV VEHICLE GOING STRAIGHT	MOTOR VEHICLE	EAST	1
30.27680779	-97.63726807	8:00 AM	FM3177	INTERSECTION RELATED	POSSIBLE INJURY	DAYLIGHT	FOG	SD ONE STRAIGHT-ONE STOPPED	MOTOR VEHICLE	WEST	1
									MOTOR VEHICLE	WEST	1
30.24930685	-97.58727117	8:45 AM	N/A	DRIVEWAY ACCESS	POSSIBLE INJURY	DAYLIGHT	CLEAR/CLOUDY	OD ONE STRAIGHT-ONE LEFT TURN	MOTOR VEHICLE	EAST	1
									MOTOR VEHICLE	WEST	1
30.28279341	-97.65317353	8:47 AM	JOHNNY MORRIS RD	INTERSECTION	NOT INJURED	DAYLIGHT	CLEAR/CLOUDY	ANGLE - ONE STRAIGHT-ONE RIGHT TURN	MOTOR VEHICLE	SOUTH	1
									MOTOR VEHICLE	WEST	1
30.25154561	-97.59629716	8:49 AM	N/A	NON INTERSECTION	NOT INJURED	DAYLIGHT	CLEAR/CLOUDY	SD BOTH GOING STRAIGHT-REAR END	MOTOR VEHICLE	NO DATA	1
									MOTOR VEHICLE	EAST	1
30.26673489	-97.62539615	10:03 AM	N IMPERIAL DR	INTERSECTION	POSSIBLE INJURY	DAYLIGHT	CLEAR/CLOUDY	ANGLE - BOTH GOING STRAIGHT	MOTOR VEHICLE	NORTH	1
									MOTOR VEHICLE	EAST	1
30.2570858	-97.61183167	10:15 AM	FM0973	INTERSECTION RELATED	NOT INJURED	DAYLIGHT	CLEAR/CLOUDY	SD BOTH RIGHT TURN	MOTOR VEHICLE	NORTH	1
									MOTOR VEHICLE	NORTH	1
30.27680779	-97.63726807	10:22 AM	FM3177	INTERSECTION RELATED	NOT INJURED	DAYLIGHT	CLEAR/CLOUDY	ANGLE - ONE LEFT TURN-ONE STOPPED	MOTOR VEHICLE	SOUTH	1
									MOTOR VEHICLE	EAST	1
30.26673489	-97.62539615	10:23 AM	N IMPERIAL DR	INTERSECTION	POSSIBLE INJURY	DAYLIGHT	CLEAR/CLOUDY	ANGLE - BOTH GOING STRAIGHT	MOTOR VEHICLE	EAST	1
									MOTOR VEHICLE	SOUTH	1
30.24747027	-97.58305112	10:27 AM	HUNTERS BEND RD	INTERSECTION RELATED	NON-INCAPACITATING	DAYLIGHT	CLEAR/CLOUDY	SD ONE STRAIGHT-ONE STOPPED	MOTOR VEHICLE	EAST	1
									MOTOR VEHICLE	EAST	1
30.28079186	-97.64794977	10:30 AM	N/A	NON INTERSECTION	NOT INJURED	DAYLIGHT	CLEAR/CLOUDY	SD BOTH GOING STRAIGHT-REAR END	MOTOR VEHICLE	WEST	1
									MOTOR VEHICLE	WEST	1
30.26749669	-97.62600866	10:35 AM	N/A	DRIVEWAY ACCESS	POSSIBLE INJURY	DAYLIGHT	CLEAR/CLOUDY	SD ONE STRAIGHT-ONE RIGHT TURN	MOTOR VEHICLE	WEST	1
									MOTOR VEHICLE	WEST	1
30.26789583	-97.62623909	10:36 AM	N/A	NON INTERSECTION	NOT INJURED	DAYLIGHT	RAIN	OMV VEHICLE GOING STRAIGHT	MOTOR VEHICLE	EAST	1
30.26560968	-97.62532767	10:45 AM	N IMPERIAL DR	INTERSECTION RELATED	POSSIBLE INJURY	DAYLIGHT	CLEAR/CLOUDY	SD ONE STRAIGHT-ONE STOPPED	MOTOR VEHICLE	NO DATA	1

Table 7 - Raw Crash Data in FM 969 Corridor in Year 2009

Crash Latitude	Crash Longitude	Crash Time	Intersecting Road	Intersection Related	Crash Severity	Light Condition	Weather Condition	Manner of Collision	Vehicle Unit Description	Vehicle Direction of Travel	Total Vehicles
30.25000553	-97.62535167	10:45 AM	N IMPERIAL DR	INTERSECTION RELATED	POSSIBLE INJURY	DAYLIGHT	CLEAR/CLOUDY	SD ONE STRAIGHT-ONE STOPPED	MOTOR VEHICLE	WEST	1
30.2570858	-97.61183167	11:00 AM	FM0973	INTERSECTION	POSSIBLE INJURY	DAYLIGHT	CLEAR/CLOUDY	OD ONE STRAIGHT-ONE LEFT TURN	MOTOR VEHICLE	EAST	1
									MOTOR VEHICLE	WEST	1
									MOTOR VEHICLE	NO DATA	1
30.2542845	-97.60583763	11:16 AM	N/A	NON INTERSECTION	NOT INJURED	DAYLIGHT	CLEAR/CLOUDY	SD ONE STRAIGHT-ONE STOPPED	MOTOR VEHICLE	EAST	1
									MOTOR VEHICLE	EAST	1
30.25727177	-97.61204477	11:22 AM	FM0973	INTERSECTION RELATED	NOT INJURED	DAYLIGHT	CLEAR/CLOUDY	SD ONE STRAIGHT-ONE STOPPED	MOTOR VEHICLE	EAST	1
									MOTOR VEHICLE	EAST	1
30.2667782	-97.6254351	11:35 AM	N IMPERIAL DR	INTERSECTION RELATED	POSSIBLE INJURY	DAYLIGHT	CLEAR/CLOUDY	SD ONE STRAIGHT-ONE STOPPED	MOTOR VEHICLE	EAST	1
									MOTOR VEHICLE	EAST	1
30.26695522	-97.62558829	12:03 PM	N/A	NON INTERSECTION	NOT INJURED	DAYLIGHT	CLEAR/CLOUDY	OMV VEHICLE GOING STRAIGHT	MOTOR VEHICLE	WEST	1
30.26261752	-97.62125003	12:21 PM	FM0973	INTERSECTION RELATED	NOT INJURED	DAYLIGHT	CLEAR/CLOUDY	OMV VEHICLE GOING STRAIGHT	NON CONTACT	EAST	1
									MOTOR VEHICLE	EAST	1
30.25377302	-97.60471966	1:00 PM	N/A	NON INTERSECTION	NOT INJURED	DAYLIGHT	RAIN	SD BOTH GOING STRAIGHT-SIDESWIPE	MOTOR VEHICLE	WEST	1
									MOTOR VEHICLE	WEST	1
30.27596171	-97.63646194	1:29 PM	N/A	NON INTERSECTION	NOT INJURED	DAYLIGHT	CLEAR/CLOUDY	OD BOTH GOING STRAIGHT	MOTOR VEHICLE	EAST	1
									MOTOR VEHICLE	NO DATA	1
30.28509853	-97.66196707	2:00 PM	REGENCY DR	INTERSECTION	NOT INJURED	DAYLIGHT	CLEAR/CLOUDY	ANGLE - ONE STRAIGHT-ONE LEFT TURN	MOTOR VEHICLE	WEST	1
									MOTOR VEHICLE	SOUTH	1
30.27109598	-97.63118899	2:12 PM	N/A	NON INTERSECTION	POSSIBLE INJURY	DAYLIGHT	CLEAR/CLOUDY	SD BOTH GOING STRAIGHT-SIDESWIPE	MOTOR VEHICLE	EAST	1
									MOTOR VEHICLE	EAST	1
30.26673489	-97.62539615	2:47 PM	N IMPERIAL DR	INTERSECTION	NOT INJURED	DAYLIGHT	CLEAR/CLOUDY	OD ONE STRAIGHT-ONE LEFT TURN	MOTOR VEHICLE	WEST	1
									MOTOR VEHICLE	EAST	1
30.28089612	-97.64824259	2:59 PM	N/A	NON INTERSECTION	POSSIBLE INJURY	DAYLIGHT	RAIN	SD BOTH GOING STRAIGHT-REAR END	MOTOR VEHICLE	EAST	1
									MOTOR VEHICLE	EAST	1
30.2507691	-97.5591307	3:05 PM	N/A	NON INTERSECTION	NOT INJURED	DAYLIGHT	CLEAR/CLOUDY	OD BOTH GOING STRAIGHT	MOTOR VEHICLE	SOUTH	1
									MOTOR VEHICLE	NO DATA	1
30.26796619	-97.62627468	3:26 PM	N/A	DRIVEWAY ACCESS	NON-INCAPACITATING	DAYLIGHT	CLEAR/CLOUDY	SD ONE STRAIGHT-ONE STOPPED	MOTOR VEHICLE	WEST	1
									MOTOR VEHICLE	NO DATA	1
30.28565244	-97.66541527	3:45 PM	US0183	INTERSECTION RELATED	INCAPACITATING INJURY	DAYLIGHT	CLEAR/CLOUDY	OMV VEHICLE GOING STRAIGHT	MOTOR VEHICLE	EAST	1
30.2570858	-97.61183167	3:47 PM	FM0973	INTERSECTION RELATED	NOT INJURED	DAYLIGHT	CLEAR/CLOUDY	SD BOTH RIGHT TURN	MOTOR VEHICLE	NORTH	1
									MOTOR VEHICLE	NORTH	1
30.26673489	-97.62539615	4:36 PM	N IMPERIAL DR	INTERSECTION RELATED	NOT INJURED	DAYLIGHT	CLEAR/CLOUDY	SD ONE STRAIGHT-ONE STOPPED	MOTOR VEHICLE	EAST	1
									MOTOR VEHICLE	EAST	1
30.25755489	-97.61237609	4:45 PM	N/A	NON INTERSECTION	POSSIBLE INJURY	DAYLIGHT	CLEAR/CLOUDY	SD ONE STRAIGHT-ONE STOPPED	MOTOR VEHICLE	EAST	1
									MOTOR VEHICLE	EAST	1
30.25716259	-97.61192142	5:00 PM	N/A	NON INTERSECTION	NOT INJURED	DAYLIGHT	CLEAR/CLOUDY	SD BOTH GOING STRAIGHT-SIDESWIPE	MOTOR VEHICLE	EAST	1
									MOTOR VEHICLE	EAST	1
30.24835779	-97.58543317	5:03 PM	N/A	NON INTERSECTION	NOT INJURED	DAYLIGHT	CLEAR/CLOUDY	OD BOTH GOING STRAIGHT	MOTOR VEHICLE	EAST	1
									MOTOR VEHICLE	WEST	1
30.24746982	-97.58308192	5:05 PM	HUNTERS BEND RD	INTERSECTION RELATED	NOT INJURED	DAYLIGHT	RAIN	SD ONE STRAIGHT-ONE RIGHT TURN	MOTOR VEHICLE	EAST	1
									MOTOR VEHICLE	EAST	1
30.27169385	-97.63270353	5:11 PM	BANTOM WOODS BND	INTERSECTION RELATED	POSSIBLE INJURY	DAYLIGHT	CLEAR/CLOUDY	OMV VEHICLE GOING STRAIGHT	MOTOR VEHICLE	EAST	1
30.24747027	-97.58305112	5:19 PM	HUNTERS BEND RD	INTERSECTION RELATED	NOT INJURED	DAYLIGHT	CLEAR/CLOUDY	SD ONE STRAIGHT-ONE STOPPED	MOTOR VEHICLE	EAST	1
									MOTOR VEHICLE	EAST	1
30.27133751	-97.63184803	5:28 PM	N/A	NON INTERSECTION	NOT INJURED	DAYLIGHT	CLEAR/CLOUDY	SD BOTH GOING STRAIGHT-SIDESWIPE	MOTOR VEHICLE	EAST	1
									MOTOR VEHICLE	EAST	1
30.27310823	-97.63435137	5:34 PM	PARK AT WOODLANDS DR	INTERSECTION	NON-INCAPACITATING	DAYLIGHT	CLEAR/CLOUDY	OD BOTH GOING STRAIGHT	MOTOR VEHICLE	EAST	1
									MOTOR VEHICLE	WEST	1
30.27684248	-97.63731404	5:36 PM	FM3177	INTERSECTION RELATED	NON-INCAPACITATING	DAYLIGHT	CLEAR/CLOUDY	SD ONE STRAIGHT-ONE STOPPED	MOTOR VEHICLE	EAST	1
									MOTOR VEHICLE	EAST	1
30.26185551	-97.62051962	5:45 PM	N/A	NON INTERSECTION	POSSIBLE INJURY	DAYLIGHT	CLEAR/CLOUDY	OMV VEHICLE GOING STRAIGHT	MOTOR VEHICLE	WEST	1
30.25042426	-97.59010952	5:46 PM	N/A	NON INTERSECTION	NOT INJURED	DUSK	RAIN	OMV VEHICLE GOING STRAIGHT	MOTOR VEHICLE	WEST	1
									MOTOR VEHICLE	NO DATA	1
30.26795848	-97.62627078	5:51 PM	N/A	NON INTERSECTION	NON-INCAPACITATING	DAYLIGHT	RAIN	OD BOTH GOING STRAIGHT	MOTOR VEHICLE	NO DATA	1
									MOTOR VEHICLE	WEST	1
									MOTOR VEHICLE	EAST	1
30.26863618	-97.62665542	6:10 PM	N/A	NON INTERSECTION	INCAPACITATING INJURY	DUSK	CLEAR/CLOUDY	OD BOTH GOING STRAIGHT	MOTOR VEHICLE	WEST	1
									MOTOR VEHICLE	WEST	1
									MOTOR VEHICLE	NO DATA	1
30.26573499	-97.62539615	6:21 PM	N IMPERIAL DR	INTERSECTION	INCAPACITATING INJURY	DAYLIGHT	CLEAR/CLOUDY	ANGLE - ONE STRAIGHT-ONE LEFT TURN	MOTOR VEHICLE	NO DATA	1
									MOTOR VEHICLE	WEST	1

Table 7 - Raw Crash Data in FM 969 Corridor in Year 2009											
Crash Latitude	Crash Longitude	Crash Time	Intersecting Road	Intersection Related	Crash Severity	Light Condition	Weather Condition	Manner of Collision	Vehicle Unit Description	Vehicle Direction of Travel	Total Vehicles
30.40073463	-97.02335013	6:21 PM	N IMPERIAL DR	INTERSECTION	INCAPACITATING INJURY	DAYLIGHT	CLEAR/CLOUDY	ANGLE - ONE STRAIGHT-ONE LEFT TURN	MOTOR VEHICLE	SOUTH	1
									MOTOR VEHICLE	NO DATA	1
									MOTOR VEHICLE	NO DATA	1
30.24910346	-97.58687727	6:27 PM	N/A	NON INTERSECTION	POSSIBLE INJURY	DARK, NOT LIGHTED	CLEAR/CLOUDY	SD ONE STRAIGHT-ONE STOPPED	MOTOR VEHICLE	NO DATA	1
									MOTOR VEHICLE	EAST	1
									MOTOR VEHICLE	NO DATA	1
									MOTOR VEHICLE	NO DATA	1
									MOTOR VEHICLE	EAST	1
30.25591849	-97.61003784	6:29 PM	N/A	DRIVEWAY ACCESS	NOT INJURED	DAYLIGHT	CLEAR/CLOUDY	SD BOTH GOING STRAIGHT-REAR END	MOTOR VEHICLE	EAST	1
									MOTOR VEHICLE	EAST	1
30.25727553	-97.61204902	6:30 PM	FM0973	INTERSECTION RELATED	POSSIBLE INJURY	DARK, NOT LIGHTED	CLEAR/CLOUDY	SD ONE STRAIGHT-ONE STOPPED	MOTOR VEHICLE	EAST	1
30.26269425	-97.62132683	6:34 PM	FM0973	INTERSECTION	NOT INJURED	DARK, NOT LIGHTED	CLEAR/CLOUDY	OMV VEHICLE TURNING LEFT	MOTOR VEHICLE	EAST	1
30.2722146	-97.63363881	6:48 PM	N/A	NON INTERSECTION	NOT INJURED	DAYLIGHT	CLEAR/CLOUDY	OMV VEHICLE GOING STRAIGHT	MOTOR VEHICLE	EAST	1
30.26774002	-97.62616028	7:00 PM	N/A	DRIVEWAY ACCESS	NOT INJURED	DAYLIGHT	CLEAR/CLOUDY	OD ONE STRAIGHT-ONE LEFT TURN	MOTOR VEHICLE	EAST	1
									MOTOR VEHICLE	WEST	1
30.25142815	-97.59869723	8:05 PM	N/A	NON INTERSECTION	NOT INJURED	DARK, NOT LIGHTED	CLEAR/CLOUDY	OD BOTH GOING STRAIGHT	MOTOR VEHICLE	WEST	1
									MOTOR VEHICLE	EAST	1
30.26690248	-97.62554357	8:23 PM	N/A	DRIVEWAY ACCESS	UNKNOWN	DARK, LIGHTED	RAIN	OMV VEHICLE TURNING LEFT	MOTOR VEHICLE	EAST	1
30.2570858	-97.61183167	8:25 PM	FM0973	INTERSECTION	NON-INCAPACITATING	DUSK	CLEAR/CLOUDY	OD ONE STRAIGHT-ONE LEFT TURN	MOTOR VEHICLE	NORTHEAST	1
									MOTOR VEHICLE	SOUTHWEST	1
30.25409427	-97.54025223	8:30 PM	N/A	NON INTERSECTION	NOT INJURED	DARK, NOT LIGHTED	CLEAR/CLOUDY	OMV VEHICLE GOING STRAIGHT	MOTOR VEHICLE	EAST	1
30.2523921	-97.60103243	8:52 PM	N/A	NON INTERSECTION	NOT INJURED	DARK, LIGHTED	CLEAR/CLOUDY	SD ONE STRAIGHT-ONE STOPPED	MOTOR VEHICLE	NOT APPLICABLE	1
									MOTOR VEHICLE	EAST	1
30.25712495	-97.61187888	10:02 PM	FM0973	INTERSECTION RELATED	NON-INCAPACITATING	DARK, NOT LIGHTED	CLEAR/CLOUDY	SD ONE STRAIGHT-ONE STOPPED	MOTOR VEHICLE	EAST	1
									MOTOR VEHICLE	EAST	1
30.24877193	-97.56801166	10:50 PM	N/A	NON INTERSECTION	FATAL	DARK, NOT LIGHTED	RAIN	OD BOTH GOING STRAIGHT	MOTOR VEHICLE	WEST	1
									MOTOR VEHICLE	EAST	1
30.27408801	-97.63502928	10:58 PM	N/A	NON INTERSECTION	NOT INJURED	DARK, NOT LIGHTED	CLEAR/CLOUDY	OMV VEHICLE GOING STRAIGHT	MOTOR VEHICLE	EAST	1
30.2570858	-97.61183167	11:32 PM	FM0973	INTERSECTION	NON-INCAPACITATING	DARK, NOT LIGHTED	CLEAR/CLOUDY	OD ONE STRAIGHT-ONE LEFT TURN	MOTOR VEHICLE	EAST	1
									MOTOR VEHICLE	WEST	1
										Total Vehicles	157
										Total Crashes	81

Table 8 - Raw Crash Data in FM 969 Corridor in Year 2010

Crash Latitude	Crash Longitude	Crash Time	Intersecting Road	Intersection Related	Crash Severity	Light Condition	Weather Condition	Manner of Collision	Vehicle Unit Description	Vehicle Direction of Travel	Total Vehicles
30.26594138	-97.62468261	12:13 AM	N/A	NON INTERSECTION	NOT INJURED	DARK, NOT LIGHTED	CLEAR	OMV VEHICLE GOING STRAIGHT	MOTOR VEHICLE	NORTH	1
30.28081275	-97.64800843	12:54 AM	SENDERO HILLS PKWY	INTERSECTION RELATED	POSSIBLE INJURY	DARK, LIGHTED	CLEAR	OMV VEHICLE GOING STRAIGHT	MOTOR VEHICLE	EAST	1
30.27680779	-97.63726807	1:05 AM	FM3177	INTERSECTION	NON-INCAPACITATING	DARK, LIGHTED	CLEAR	SD BOTH GOING STRAIGHT-REAR END	MOTOR VEHICLE	EAST	1
30.24796765	-97.58060004	1:25 AM	N/A	NON INTERSECTION	NOT INJURED	DARK, NOT LIGHTED	CLEAR	OMV VEHICLE GOING STRAIGHT	MOTOR VEHICLE	EAST	1
30.27156849	-97.63242254	1:40 AM	N/A	NON INTERSECTION	POSSIBLE INJURY	DARK, LIGHTED	RAIN	OMV VEHICLE GOING STRAIGHT	MOTOR VEHICLE	EAST	1
30.25148257	-97.59741987	1:54 AM	N/A	NON INTERSECTION	NON-INCAPACITATING	DARK, NOT LIGHTED	CLEAR	OMV VEHICLE GOING STRAIGHT	MOTOR VEHICLE	EAST	1
30.25617631	-97.61053227	2:09 AM	N/A	NON INTERSECTION	NON-INCAPACITATING	DARK, LIGHTED	CLEAR	OMV VEHICLE GOING STRAIGHT	MOTOR VEHICLE	WEST	1
30.28472698	-97.65981879	2:23 AM	N/A	NON INTERSECTION	FATAL	DARK, NOT LIGHTED	CLEAR	SD ONE STRAIGHT-ONE STOPPED	MOTOR VEHICLE	EAST	1
30.26630128	-97.62500624	3:24 AM	N/A	NON INTERSECTION	NOT INJURED	DARK, NOT LIGHTED	CLOUDY	SD ONE STRAIGHT-ONE LEFT TURN	MOTOR VEHICLE	EAST	1
30.27567685	-97.63623448	3:52 AM	N/A	NON INTERSECTION	INCAPACITATING INJURY	DARK, NOT LIGHTED	CLEAR	OMV VEHICLE GOING STRAIGHT	MOTOR VEHICLE	EAST	1
30.28081275	-97.64800843	5:12 AM	SENDERO HILLS PKWY	INTERSECTION	NOT INJURED	DARK, NOT LIGHTED	CLEAR	OMV VEHICLE GOING STRAIGHT	MOTOR VEHICLE	WEST	1
30.25057152	-97.59091239	6:10 AM	N/A	NON INTERSECTION	NOT INJURED	DARK, NOT LIGHTED	CLEAR	OMV VEHICLE GOING STRAIGHT	MOTOR VEHICLE	EAST	1
30.27888734	-97.64282438	6:46 AM	N/A	NON INTERSECTION	POSSIBLE INJURY	UNKNOWN	CLEAR	SD ONE STRAIGHT-ONE STOPPED	MOTOR VEHICLE	WEST	1
30.28081275	-97.64800843	7:04 AM	SENDERO HILLS PKWY	INTERSECTION RELATED	NOT INJURED	DARK, NOT LIGHTED	CLEAR	SD ONE STRAIGHT-ONE STOPPED	MOTOR VEHICLE	WEST	1
30.27172518	-97.63277377	7:09 AM	N/A	NON INTERSECTION	NOT INJURED	DARK, LIGHTED	CLEAR	OMV VEHICLE GOING STRAIGHT	MOTOR VEHICLE	NORTH	1
30.25336119	-97.6036265	7:29 AM	SH0130	INTERSECTION RELATED	NOT INJURED	DAYLIGHT	CLOUDY	SD ONE STRAIGHT-ONE STOPPED	MOTOR VEHICLE	NORTH	1
30.26063395	-97.61863224	7:30 AM	N/A	NON INTERSECTION	FATAL	DAWN	RAIN	OD BOTH GOING STRAIGHT	MOTOR VEHICLE	EAST	1
30.27680779	-97.63726807	7:32 AM	FM3177	INTERSECTION RELATED	NON-INCAPACITATING	DAYLIGHT	CLEAR	SD ONE STRAIGHT-ONE STOPPED	MOTOR VEHICLE	WEST	1
30.28097394	-97.64844643	7:36 AM	SENDERO HILLS PKWY	INTERSECTION RELATED	NON-INCAPACITATING	DAYLIGHT	CLEAR	SD ONE STRAIGHT-ONE STOPPED	MOTOR VEHICLE	EAST	1
30.24790063	-97.58454782	7:40 AM	N/A	NON INTERSECTION	NOT INJURED	DAYLIGHT	CLOUDY	SD BOTH GOING STRAIGHT-REAR END	MOTOR VEHICLE	WEST	1
30.24790063	-97.58454782	7:40 AM	N/A	NON INTERSECTION	NOT INJURED	DAYLIGHT	CLOUDY	SD BOTH GOING STRAIGHT-REAR END	MOTOR VEHICLE	WEST	1
30.27680779	-97.63726807	7:44 AM	FM3177	INTERSECTION RELATED	NOT INJURED	DAYLIGHT	CLEAR	SD ONE STRAIGHT-ONE STOPPED	MOTOR VEHICLE	WEST	1
30.2570858	-97.61183167	7:55 AM	FM0973	INTERSECTION	NOT INJURED	DAYLIGHT	CLEAR	ANGLE - BOTH GOING STRAIGHT	MOTOR VEHICLE	NORTH	1
30.25996943	-97.61639511	8:39 AM	N/A	NON INTERSECTION	UNKNOWN	DARK, NOT LIGHTED	CLEAR	OMV VEHICLE GOING STRAIGHT	MOTOR VEHICLE	UNKNOWN	1
30.27273992	-97.63410251	9:00 AM	N/A	NON INTERSECTION	NOT INJURED	DAYLIGHT	CLOUDY	OMV VEHICLE GOING STRAIGHT	MOTOR VEHICLE	UNKNOWN	1
30.27287061	-97.63419081	9:10 AM	N/A	NON INTERSECTION	NON-INCAPACITATING	DAYLIGHT	RAIN	OD BOTH GOING STRAIGHT	MOTOR VEHICLE	WEST	1
30.27686548	-97.63734597	9:55 AM	N/A	DRIVEWAY ACCESS	POSSIBLE INJURY	DAYLIGHT	RAIN	SD ONE STRAIGHT-ONE RIGHT TURN	MOTOR VEHICLE	WEST	1
30.25800654	-97.61290943	10:25 AM	N/A	NON INTERSECTION	NOT INJURED	DAYLIGHT	CLEAR	SD BOTH GOING STRAIGHT-REAR END	MOTOR VEHICLE	WEST	1
30.28279341	-97.65317353	10:26 AM	JOHNNY MORRIS RD	INTERSECTION	NON-INCAPACITATING	DAYLIGHT	UNKNOWN	ANGLE - BOTH GOING STRAIGHT	MOTOR VEHICLE	EAST	1
30.25447805	-97.60629075	12:22 PM	N/A	NON INTERSECTION	POSSIBLE INJURY	DAYLIGHT	CLEAR	OMV VEHICLE GOING STRAIGHT	MOTOR VEHICLE	SOUTH	1
30.27680779	-97.63726807	12:39 PM	FM3177	INTERSECTION	POSSIBLE INJURY	DAYLIGHT	RAIN	SD ONE STRAIGHT-ONE LEFT TURN	MOTOR VEHICLE	EAST	1
30.25120958	-97.55886055	12:50 PM	N/A	DRIVEWAY ACCESS	NOT INJURED	DAYLIGHT	CLOUDY	OMV VEHICLE TURNING LEFT	MOTOR VEHICLE	EAST	1
30.28081275	-97.64800843	1:01 PM	SENDERO HILLS PKWY	INTERSECTION	NOT INJURED	DAYLIGHT	CLEAR	ANGLE - BOTH GOING STRAIGHT	MOTOR VEHICLE	NORTH	1
30.27167504	-97.63266138	1:23 PM	N/A	NON INTERSECTION	INCAPACITATING INJURY	DAYLIGHT	CLEAR	OMV VEHICLE GOING STRAIGHT	MOTOR VEHICLE	WEST	1

Table 8 - Raw Crash Data in FM 969 Corridor in Year 2010

Crash Latitude	Crash Longitude	Crash Time	Intersecting Road	Intersection Related	Crash Severity	Light Condition	Weather Condition	Manner of Collision	Vehicle Unit Description	Vehicle Direction of Travel	Total Vehicles
30.2481813	-97.57941041	1:25 PM	CADILLAC DR	INTERSECTION	POSSIBLE INJURY	DAYLIGHT	CLEAR	OD ONE STRAIGHT-ONE LEFT TURN	MOTOR VEHICLE	WEST	1
									MOTOR VEHICLE	EAST	1
30.28280644	-97.6532085	1:39 PM	JOHNNY MORRIS RD	INTERSECTION RELATED	POSSIBLE INJURY	DAYLIGHT	CLEAR	SD ONE STRAIGHT-ONE STOPPED	MOTOR VEHICLE	WEST	1
									MOTOR VEHICLE	WEST	1
30.2570858	-97.61183167	1:53 PM	FM0973	INTERSECTION RELATED	NOT INJURED	DAYLIGHT	CLEAR	OMV VEHICLE GOING STRAIGHT	MOTOR VEHICLE	EAST	1
30.28081275	-97.64800843	1:54 PM	SENDERO HILLS PKWY	INTERSECTION	NOT INJURED	DAYLIGHT	CLEAR	OD ONE STRAIGHT-ONE LEFT TURN	MOTOR VEHICLE	WEST	1
									MOTOR VEHICLE	EAST	1
30.24922033	-97.52364146	1:55 PM	N/A	NON INTERSECTION	NOT INJURED	DAYLIGHT	CLEAR	OMV VEHICLE GOING STRAIGHT	MOTOR VEHICLE	EAST	1
									MOTOR VEHICLE	EAST	1
30.25355115	-97.54787484	1:56 PM	TAYLOR LN	INTERSECTION RELATED	NOT INJURED	DAYLIGHT	CLEAR	SD ONE STRAIGHT-ONE STOPPED	MOTOR VEHICLE	EAST	1
									MOTOR VEHICLE	EAST	1
									MOTOR VEHICLE	EAST	1
30.28565026	-97.66540114	2:05 PM	US0183	INTERSECTION RELATED	POSSIBLE INJURY	DAYLIGHT	CLEAR	SD ONE STRAIGHT-ONE STOPPED	MOTOR VEHICLE	WEST	1
									MOTOR VEHICLE	WEST	1
									MOTOR VEHICLE	WEST	1
30.27226808	-97.63370036	2:20 PM	FM3177	INTERSECTION	NON-INCAPACITATING	DAYLIGHT	CLEAR	OD ONE STRAIGHT-ONE LEFT TURN	MOTOR VEHICLE	WEST	1
									MOTOR VEHICLE	EAST	1
30.24728302	-97.5213166	2:25 PM	N/A	NON INTERSECTION	NOT INJURED	DAYLIGHT	CLOUDY	OD BOTH GOING STRAIGHT	MOTOR VEHICLE	SOUTH	1
									MOTOR VEHICLE	NORTH	1
30.27156849	-97.63242254	2:45 PM	N/A	NON INTERSECTION	NON-INCAPACITATING	DAYLIGHT	RAIN	OD BOTH GOING STRAIGHT	MOTOR VEHICLE	WEST	1
									MOTOR VEHICLE	EAST	1
30.26127949	-97.61993997	2:50 PM	N/A	NON INTERSECTION	NOT INJURED	DAYLIGHT	CLEAR	OMV VEHICLE GOING STRAIGHT	MOTOR VEHICLE	WEST	1
30.2570858	-97.61183167	3:12 PM	FM0973	INTERSECTION RELATED	NOT INJURED	DAYLIGHT	RAIN	SD BOTH RIGHT TURN	MOTOR VEHICLE	EAST	1
									MOTOR VEHICLE	EAST	1
30.27680779	-97.63726807	3:15 PM	FM3177	INTERSECTION RELATED	NON-INCAPACITATING	DAYLIGHT	CLOUDY	OMV VEHICLE GOING STRAIGHT	MOTOR VEHICLE	SOUTH	1
30.2570858	-97.61183167	3:25 PM	FM0973	INTERSECTION	NOT INJURED	DAYLIGHT	CLEAR	ANGLE - BOTH GOING STRAIGHT	MOTOR VEHICLE	EAST	1
									MOTOR VEHICLE	NORTH	1
30.26427671	-97.62303319	3:25 PM	N/A	NON INTERSECTION	INCAPACITATING INJURY	DAYLIGHT	CLEAR	OD BOTH GOING STRAIGHT	MOTOR VEHICLE	WEST	1
									MOTOR VEHICLE	EAST	1
									MOTOR VEHICLE	WEST	1
30.27550749	-97.63610217	3:30 PM	N/A	NON INTERSECTION	NON-INCAPACITATING	DAYLIGHT	RAIN	OD BOTH GOING STRAIGHT	MOTOR VEHICLE	EAST	1
									MOTOR VEHICLE	WEST	1
30.28506621	-97.66178019	3:33 PM	REGENCY DR	INTERSECTION	POSSIBLE INJURY	DAYLIGHT	CLOUDY	SD BOTH GOING STRAIGHT-REAR END	MOTOR VEHICLE	EAST	1
									MOTOR VEHICLE	EAST	1
30.28079186	-97.64794977	3:45 PM	N/A	NON INTERSECTION	NOT INJURED	DAYLIGHT	CLEAR	SD BOTH GOING STRAIGHT-REAR END	MOTOR VEHICLE	EAST	1
									MOTOR VEHICLE	EAST	1
									MOTOR VEHICLE	EAST	1
30.26673489	-97.62539615	4:02 PM	N IMPERIAL DR	INTERSECTION	NOT INJURED	DAYLIGHT	CLEAR	ANGLE - ONE STRAIGHT-ONE LEFT TURN	MOTOR VEHICLE	NORTH	1
									MOTOR VEHICLE	WEST	1
30.26758904	-97.62606765	4:52 PM	N/A	NON INTERSECTION	INCAPACITATING INJURY	DAYLIGHT	RAIN	ANGLE - BOTH GOING STRAIGHT	MOTOR VEHICLE	NORTH	1
									MOTOR VEHICLE	WEST	1
30.285512	-97.66446723	4:58 PM	N/A	DRIVEWAY ACCESS	NON-INCAPACITATING	DAYLIGHT	CLEAR	ANGLE - ONE STRAIGHT-ONE LEFT TURN	MOTOR VEHICLE	NORTH	1
									MOTOR VEHICLE	EAST	1
30.2570858	-97.61183167	5:25 PM	FM0973	INTERSECTION	NON-INCAPACITATING	DAYLIGHT	CLEAR	OD ONE STRAIGHT-ONE LEFT TURN	MOTOR VEHICLE	EAST	1
									MOTOR VEHICLE	WEST	1
30.2570858	-97.61183167	5:30 PM	FM0973	INTERSECTION RELATED	NOT INJURED	DAYLIGHT	CLOUDY	SD ONE STRAIGHT-ONE STOPPED	MOTOR VEHICLE	NORTH	1
									MOTOR VEHICLE	NORTH	1
30.25704129	-97.61179496	5:40 PM	FM0973	INTERSECTION RELATED	POSSIBLE INJURY	DAYLIGHT	CLOUDY	SD BOTH RIGHT TURN	MOTOR VEHICLE	EAST	1
									MOTOR VEHICLE	EAST	1
30.26024154	-97.61731118	5:40 PM	N/A	NON INTERSECTION	INCAPACITATING INJURY	DAYLIGHT	CLEAR	OMV VEHICLE GOING STRAIGHT	MOTOR VEHICLE	EAST	1
30.28279341	-97.65317353	5:43 PM	JOHNNY MORRIS RD	INTERSECTION	POSSIBLE INJURY	DAYLIGHT	CLEAR	ANGLE - ONE STRAIGHT-ONE RIGHT TURN	MOTOR VEHICLE	WEST	1
									MOTOR VEHICLE	SOUTH	1
30.24810963	-97.57998886	5:45 PM	HUNTERS BEND RD	INTERSECTION RELATED	NON-INCAPACITATING	DAYLIGHT	CLOUDY	SD ONE STRAIGHT-ONE STOPPED	MOTOR VEHICLE	EAST	1
									MOTOR VEHICLE	EAST	1
									MOTOR VEHICLE	EAST	1
30.25841901	-97.61339126	6:15 PM	NOT REPORTED	NON INTERSECTION	NOT INJURED	DAYLIGHT	CLEAR	SD ONE STRAIGHT-ONE STOPPED	MOTOR VEHICLE	EAST	1
									MOTOR VEHICLE	EAST	1
30.26269671	-97.62132929	7:09 PM	BLUE BLUFF RD	INTERSECTION	POSSIBLE INJURY	DAYLIGHT	CLEAR	ANGLE - ONE STRAIGHT-ONE LEFT TURN	MOTOR VEHICLE	SOUTH	1
									MOTOR VEHICLE	WEST	1

Table 8 - Raw Crash Data in FM 969 Corridor in Year 2010

Crash Latitude	Crash Longitude	Crash Time	Intersecting Road	Intersection Related	Crash Severity	Light Condition	Weather Condition	Manner of Collision	Vehicle Unit Description	Vehicle Direction of Travel	Total Vehicles
30.28279341	-97.65317353	7:19 PM	JOHNNY MORRIS RD	INTERSECTION	NOT INJURED	DAYLIGHT	CLEAR	OD ONE STRAIGHT-ONE LEFT TURN	MOTOR VEHICLE	WEST	1
									MOTOR VEHICLE	EAST	1
30.28279341	-97.65317353	7:20 PM	JOHNNY MORRIS RD	INTERSECTION	NON-INCAPACITATING	DARK, LIGHTED	CLOUDY	OD ONE STRAIGHT-ONE LEFT TURN	MOTOR VEHICLE	WEST	1
									MOTOR VEHICLE	EAST	1
30.269411	-97.62762672	7:26 PM	N/A	NON INTERSECTION	NOT INJURED	DAYLIGHT	CLEAR	OMV VEHICLE GOING STRAIGHT	MOTOR VEHICLE	WEST	1
30.25142898	-97.59870319	8:25 PM	N/A	NON INTERSECTION	NOT INJURED	DARK, NOT LIGHTED	CLOUDY	OMV VEHICLE GOING STRAIGHT	MOTOR VEHICLE	WEST	1
30.2570858	-97.61183167	8:28 PM	FM0973	INTERSECTION	NOT INJURED	DAYLIGHT	CLEAR	OD ONE STRAIGHT-ONE LEFT TURN	MOTOR VEHICLE	EAST	1
									MOTOR VEHICLE	WEST	1
30.2570858	-97.61183167	8:35 PM	FM0973	INTERSECTION RELATED	NOT INJURED	DARK, LIGHTED	CLEAR	SD BOTH RIGHT TURN	MOTOR VEHICLE	NORTH	1
									MOTOR VEHICLE	NORTH	1
30.26673489	-97.62539615	8:35 PM	N IMPERIAL DR	INTERSECTION	POSSIBLE INJURY	DARK, LIGHTED	CLEAR	ANGLE - BOTH GOING STRAIGHT	MOTOR VEHICLE	EAST	1
									MOTOR VEHICLE	SOUTH	1
30.2676481	-97.62610537	8:55 PM	N/A	DRIVEWAY ACCESS	NOT INJURED	DARK, NOT LIGHTED	CLEAR	SD ONE STRAIGHT-ONE RIGHT TURN	MOTOR VEHICLE	EAST	1
									MOTOR VEHICLE	EAST	1
30.25148609	-97.59739167	9:47 PM	N/A	NON INTERSECTION	POSSIBLE INJURY	DARK, NOT LIGHTED	CLEAR	OMV VEHICLE GOING STRAIGHT	MOTOR VEHICLE	EAST	1
30.24747027	-97.58305112	10:00 PM	HUNTERS BEND RD	INTERSECTION	POSSIBLE INJURY	DARK, LIGHTED	CLEAR	OD ONE STRAIGHT-ONE LEFT TURN	MOTOR VEHICLE	WEST	1
									MOTOR VEHICLE	EAST	1
30.27173145	-97.63278782	10:11 PM	N/A	NON INTERSECTION	UNKNOWN	UNKNOWN	CLEAR	OMV VEHICLE GOING STRAIGHT	MOTOR VEHICLE	EAST	1
30.28392259	-97.65613563	11:35 PM	N/A	NON INTERSECTION	NOT INJURED	DARK, NOT LIGHTED	RAIN	OMV VEHICLE GOING STRAIGHT	MOTOR VEHICLE	EAST	1
30.25154561	-97.59629716	11:47 PM	N/A	NON INTERSECTION	NOT INJURED	DARK, NOT LIGHTED	CLEAR	OMV VEHICLE GOING STRAIGHT	MOTOR VEHICLE	SOUTH	1
30.28279341	-97.65317353	11:58 PM	JOHNNY MORRIS RD	INTERSECTION RELATED	NOT INJURED	DARK, LIGHTED	CLEAR	OMV VEHICLE TURNING LEFT	MOTOR VEHICLE	EAST	1
										Total Vehicles	141
										Total Crashes	77