

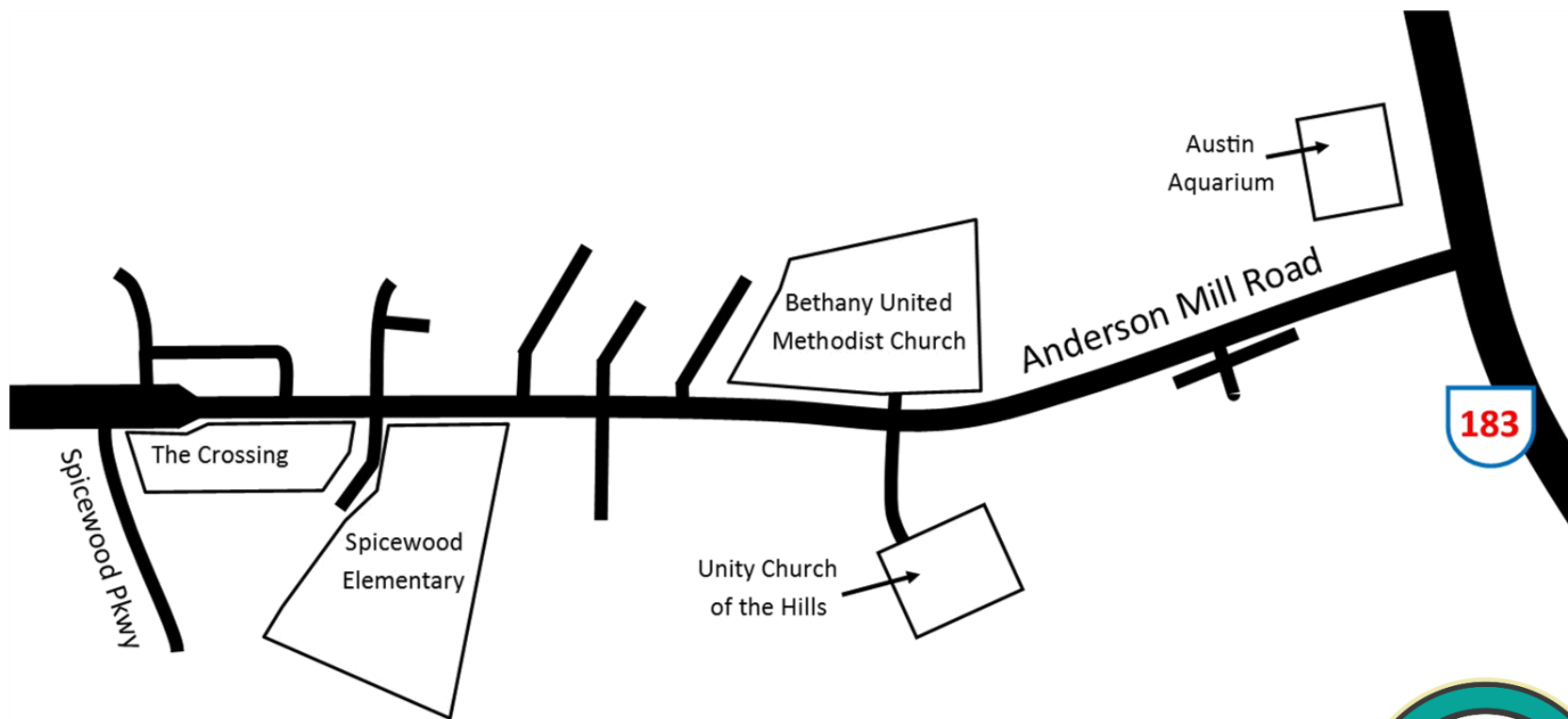
THE 2016
MOBILITY
BOND



TEXAS
DVP-8287

PROJECT LIMITS

Anderson Mill Road From US 183 to Spicewood Parkway



FUNDING

- \$500k in funding for preliminary engineering & design (ATD 2016 Operating Budget)
- \$5.5M in funding for construction, utility coordination & ROW acquisition as needed (2016 Mobility Bond)
 - Part of \$30M bucket to address
 - Anderson Mill Road from Spicewood Parkway to US Hwy 183
 - the intersection of RM 620 and FM 2222
 - Parmer Lane between SH 45 to Brushy Creek Road

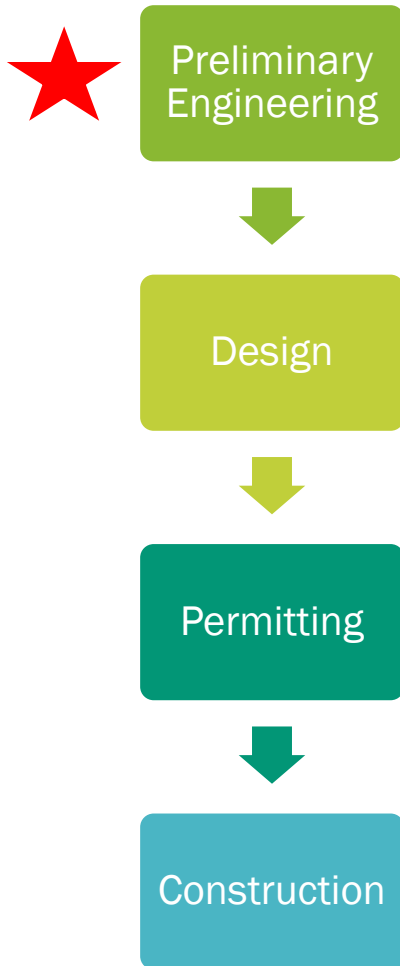


PROJECT TEAM

- Austin Transportation Department: Sponsor
- Public Works Department: Project Delivery
- Team:
 - Paul Terranova, ATD, lead on 2016 Bond Regional Projects
 - Allison Dietzel, PWD, Project Manager
 - Kevin Sweat, PWD, Managing Engineer
 - Dipti Borkar-Desai, ATD, Area Engineer
 - Cheyenne Krause, ATD, Public Information/Engagement
 - & internal engineering, design and planning teams
- GOAL: Work with community to balance needs and priorities to develop a constructible project(s) that enhances safety and mobility and fits within budget



TIMELINE



- Preliminary Engineering (2017-2018)
 - Community engagement on vision, recommendations, and priorities for limited funding
 - Includes high-level design (30%) and coordination with utilities, right of way, and existing plans and guiding documents
- Design (2018-2020)
 - Community engagement on 60% design
- Construction: (~2020-2021)



COMMUNITY ENGAGEMENT COMPLETED TO DATE

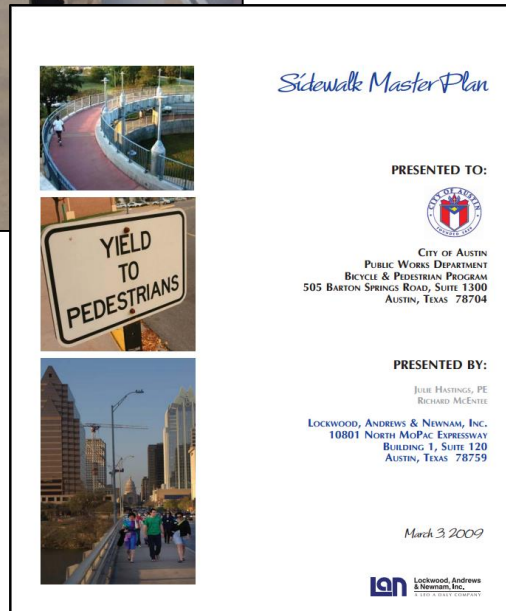
- Grassroots, community-led input effort for Anderson Mill from RM 620 to US 183
 - Sample comments/concerns:
 - Concerns about left-turn movements (safety and congestion)
 - Lack of sidewalks/ADA Accessibility, especially near businesses and transit
 - Concerns about cut-through traffic in adjacent neighborhoods
 - Desire to see new traffic and pedestrian signals and medians
 - Etc.
 - Maps today for additional input



GUIDING PLANS AND DOCUMENTS



- Sidewalk Master Plan
- Bicycle Master Plan
- Complete Streets Ordinance
- ATD Street Design Guide
- Imagine Austin



PROJECT CONTEXT AND ANTICIPATED CONSTRAINTS

- Utilities
- Drainage
- Right-of-Way / Easements



ANTICIPATED CONSTRAINT: BUDGET

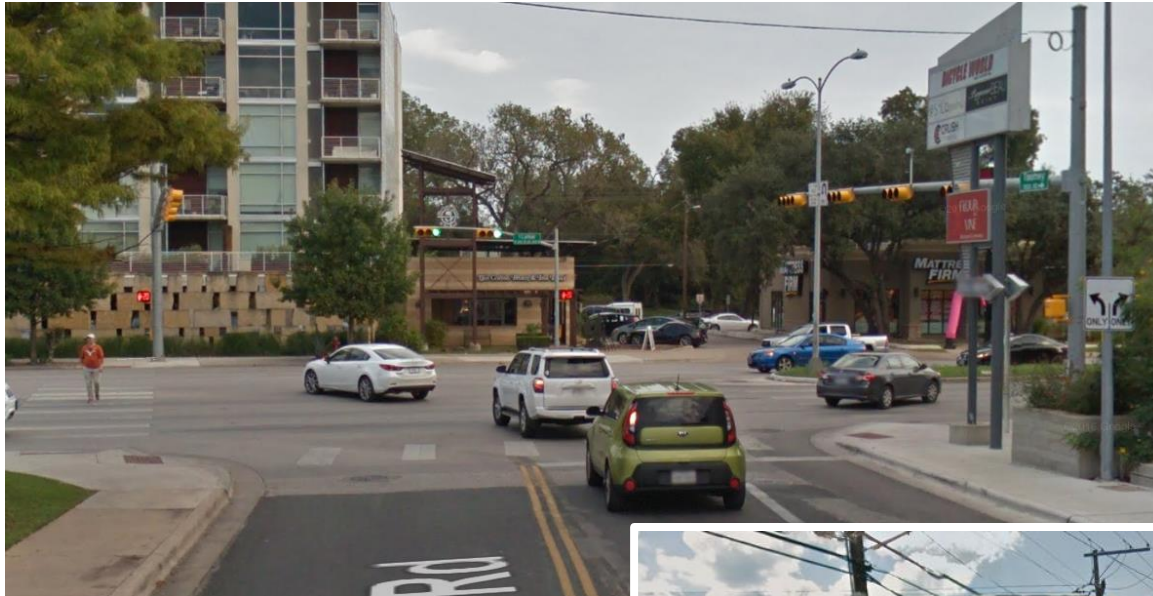
\$5.5 million for construction, utility relocation and ROW acquisition as needed

If recommended improvement costs exceed budget, community may be asked to help us prioritize improvements



ANTICIPATED CONSTRAINT: BUDGET

Example: two 3-leg intersections, two different costs



Lamar Blvd. at Toomey Rd.

- Wider road = larger poles
- Concrete work to add ADA ramps, additional right-turn lane and foundation for larger signal poles

• **COST: ~ \$125,000**

35th Street at Pecos Street

- Smaller signal poles/arms
- No concrete work needed

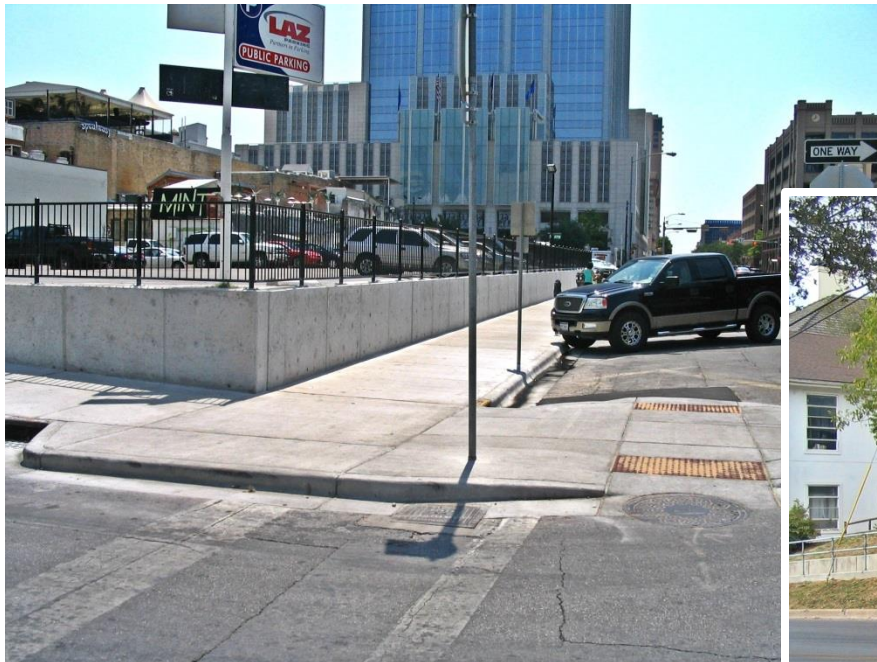
• **COST: ~ \$75,000**



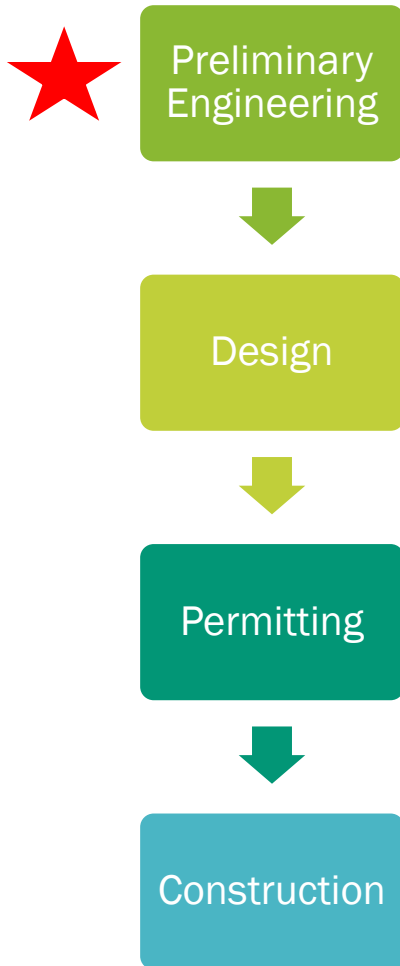
ANTICIPATED CONSTRAINT: BUDGET

Example: three sidewalk projects with three different costs

- 4th Street and Colorado **\$150,000**
 - A complex sidewalk installation
 - retaining walls, railing on top of the wall to prevent falls, extended bulb out curb ramps, etc.
- 30th Street and Speedway - **\$100,000**
 - really complex ramp and sidewalk
 - steep hill, includes terracing ramps, retaining walls, handrail, etc.
- S.1st and Great Britain - **\$30,000**
 - relatively simple sidewalk installation



TIMELINE



- Preliminary Engineering (2017-2018)
 - Community engagement on vision, recommendations, and priorities for limited funding
 - Includes high-level design (30%) and coordination with utilities, right of way, and existing plans and guiding documents
- Design (2018-2020)
 - Community engagement on 60% design
- Construction: (~2020-2021)



QUESTIONS?

- 2016Bond@AustinTexas.gov
- Allison.Dietzel@AustinTexas.gov

