

Zero Waste Block Leader Orientation

Jennifer Denton
Austin Resource Recovery



Agenda for Today

- **Introductions**
- **Zero Waste Block Leader Program**
 - ❖ Roles & Responsibilities
 - ❖ Communications
 - ❖ Quarterly Meetups & Tours
 - ❖ Recruiting more Block Leaders
- **Austin Resource Recovery Overview**
 - ❖ Zero Waste Goals
 - ❖ Diversion Rate
 - ❖ Residential Services
 - ❖ Curbside Recycling Collection
 - ❖ Curbside Trash Collection
 - ❖ Recycle Re-Use Drop Off Center
 - ❖ Composting Classes
 - ❖ Curbside Organics Pilot
 - ❖ Commercial Services



Zero Waste Block Leader Program

Block Leaders are active, "green-minded" neighborhood residents who help spread the word about recycling in your neighborhoods. Your mission is to unite the community to promote environmental issues and lead the effort in creating a cleaner, greener Austin.

Block Leaders are not the recycling or composting police!

As Block Leaders you are available to help to educate your friends and neighbors on recycling and composting, in a way that encourages them to divert more materials from the landfill.



Roles & Responsibilities

- We ask for a commitment of between 10 - 25 hours **a year**
- Block Leaders will be asked to commit to providing information to their neighbors at a self-selected level of activity:
 - ❖ By placing a "Zero Waste Block Leader" sign in your yard, or
 - ❖ By sharing the Austin Resource Recovery electronic newsletter with your neighbors/neighborhood association, or
 - ❖ By distributing informational door hangers to your neighbors, or
 - ❖ By making presentations to your neighborhood association/HOA meeting, or
 - ❖ By engaging their neighbors in face to face conversations about Zero Waste goals, or
 - ❖ By volunteering with Austin Resource Recovery staff at community events

Compost Coaches

Compost Coaches

- Block Leaders currently in compost pilot will serve as peer educators to block leaders in the upcoming expansion areas.
- Block leaders in the upcoming compost expansion areas will act as compost coaches to their neighbors. Training and materials will be provided! Stay tuned for more information!



Zero Waste Block Leader Program



Communications

I PROMISE NOT TO SPAM YOU!

- Email from perhaps twice a month, or more as special projects or updates from Austin Resource Recovery become available.
- You will receive the monthly Austin Resource Recovery Newsletter each month – feel free to share it with your neighbors!
- **If you aren't receiving email from me at all, please let me know.**
- Add the email address block.leader@austintexas.gov to your contact list.
- You are always welcome to call or email me! Jennifer.denton@austintexas.gov | 512-974-2744



Quarterly Reports

What we're looking for in the report:

- How many people you are interacting with. Not WHO, but how many.
- What questions are you getting from neighbors about recycling, composting or zero waste in general,
- What questions do you have or information do you need,
- What issues you are seeing so that we can create materials for you use to help address those issues, and
- Also, we'd like to know who is doing a great job and recognize them for it.

Quarterly Meetups and Tours

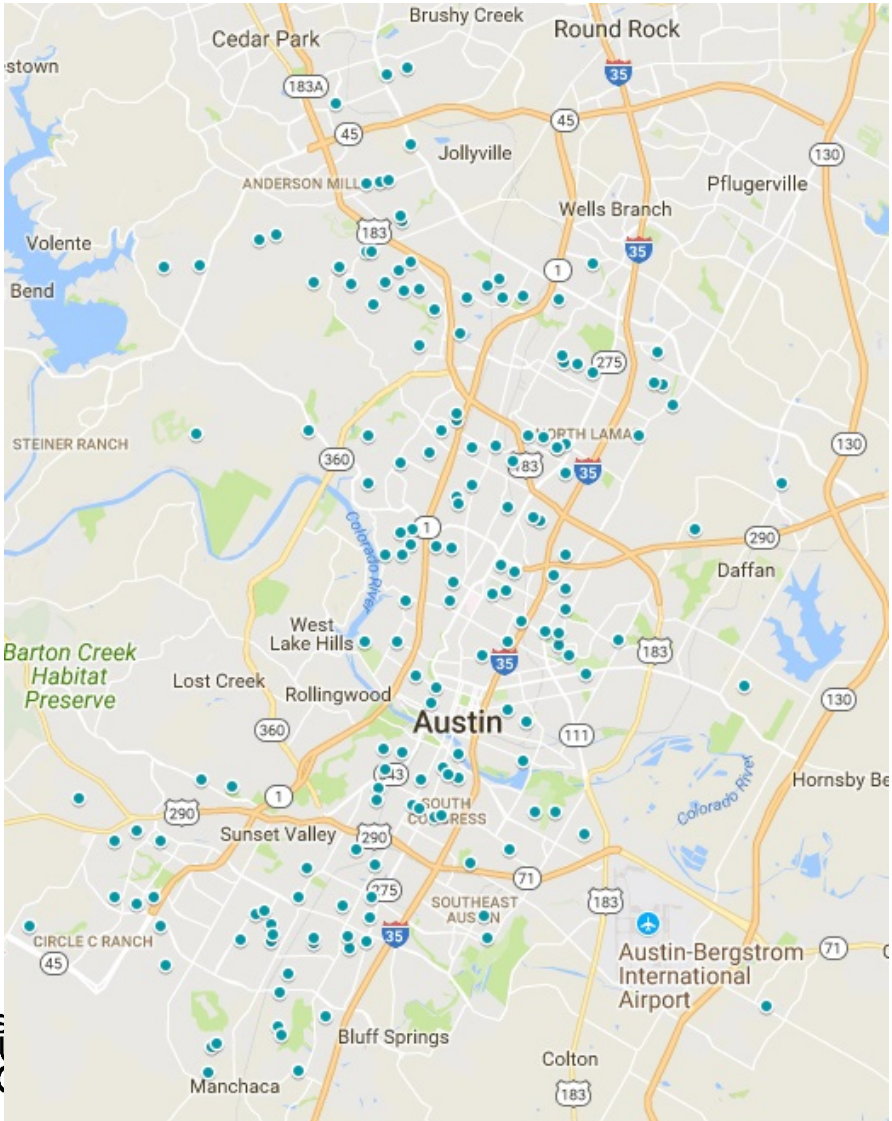
Quarterly Meetups

- Input and feedback,
- Information sharing: What's working? Any issues? What questions are you getting?
- To interact with block leaders in other neighborhoods and learn from each other,
- Distribute door hangers

Optional Tours

- Balcones MRF
- Organics By Gosh
- Recycle Reuse Drop Off Center
- Hornsby Bend Biosolids Management Plant
- Community First Village
- Make other suggestions!

Recruiting More Block Leaders!



- We have 170 Block Leaders spread across our service area
- We have big gaps in some areas – we will focus our recruitment and our outreach in these areas
- austintexas.gov/zerowasteblockleader



Find us Online



[facebook.com/austinrecycles](https://www.facebook.com/austinrecycles)

We have created a Facebook Group called
'Zero Waste Block Leaders'

<http://bit.ly/BlockLeaderGroup>

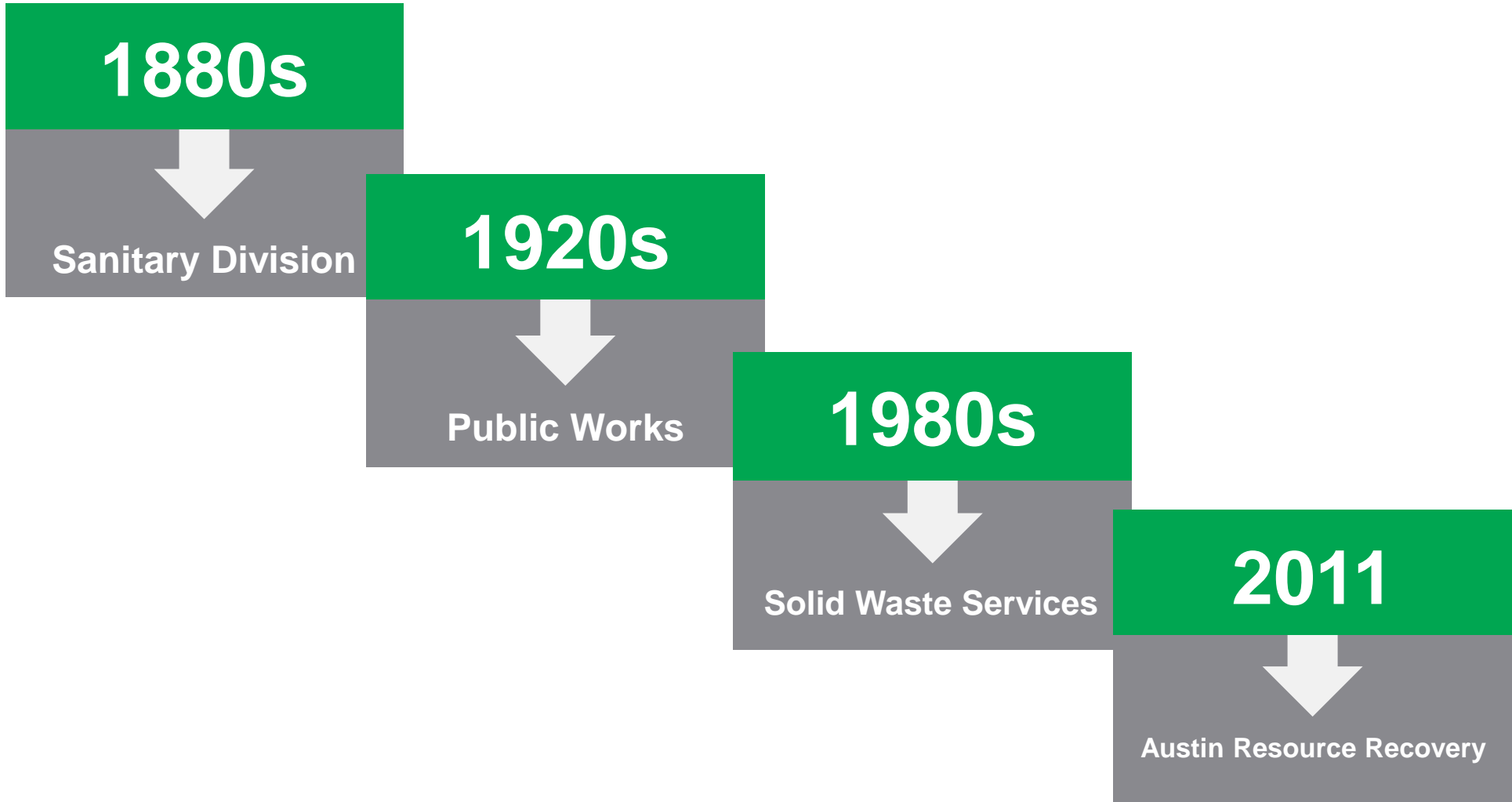


austinrecycles.com





Evolution of Austin Resource Recovery



Austin's Zero Waste Goal

- Master Plan adopted 2011
- 90% diversion by 2040
- Reaching Zero Waste
 - Reduce
 - Purchasing habits
 - Reuse
 - Recycling
 - Composting



Diversion Rate

Tons Diverted



DIVERSION

Tons Diverted +
Tons Disposed



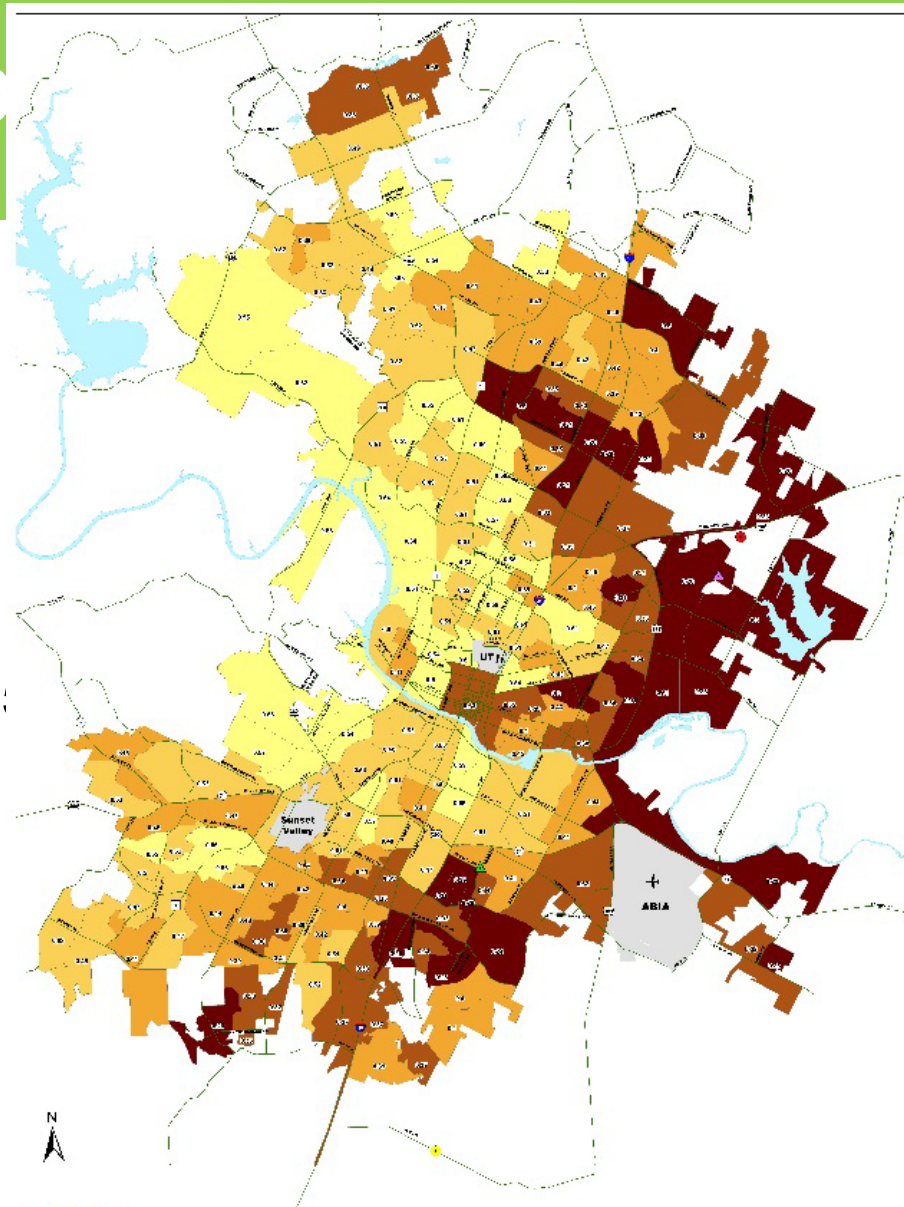
GENERATION

Collection

Rate

In 2015

rate was 42%,
and 30%



THE CITY OF AUSTIN
 OFFICE OF SUSTAINABILITY
 78777
 512.478.2000
 www.austintexas.gov

Garbage Routes By Diversion Rates (March to May 2016)

©2016 City of Austin, Texas. All rights reserved. This map is for informational purposes only. The City of Austin is not responsible for any errors or omissions on this map. The City of Austin is not responsible for any damages, including consequential damages, arising from the use of this map.

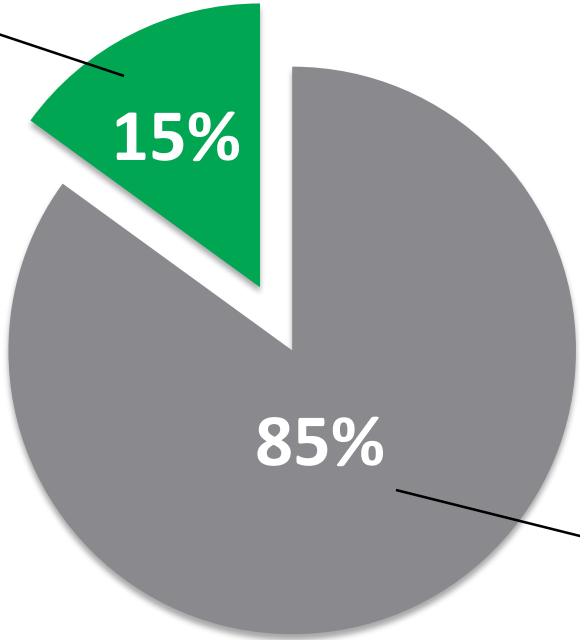
- ▲ Not on route
- ▲ 0-10%
- ▲ 11-20%
- ▲ 21-30%
- ▲ 31-40%
- ▲ 41-50%
- ▲ 51-60%
- ▲ 61-70%
- ▲ 71-80%
- ▲ 81-90%
- ▲ 91-100%
- ▲ Not on route



Material Stream

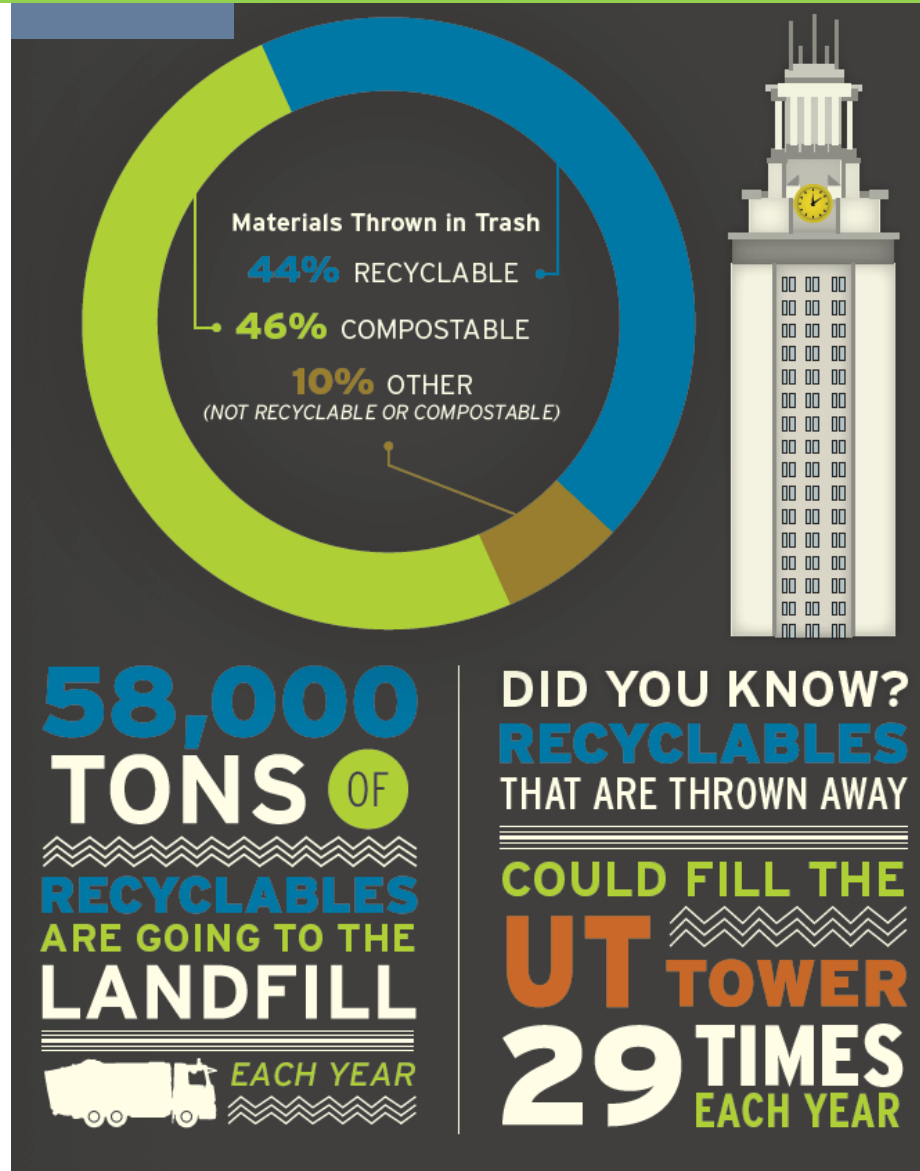
Most of the discards in Austin are outside of ARR's control

Mostly Residential
Managed by City of Austin



Commercial & Multifamily
Managed by Private Haulers

What's in Our Trash?





Services



Curbside Trash Collection



96-gallon
\$42.85/mo.*



64-gallon
\$24.30/mo.*



32-gallon
\$19.15/mo.*



24-gallon
\$17.90/mo.*

*Includes base fee of \$14.05. Carts 64-gallon and smaller cost \$0.16 per gallon; the 96-gallon cart costs \$0.30 per gallon.

- Weekly Collection
- Pay as you throw
- Save money each month by recycling more & reducing trash cart size

Curbside Recycling Collection



- Biweekly Collection
- Single Stream
 - Plastic
 - Paper
 - Glass
 - Metal
- Cart overflowing? Customers can request a second cart for FREE. Call 512-494-9400.

What Goes In?



Plastic Materials



Paper



Boxboard and Cardboard



Metals



Glass



KEEP OUT OF RECYCLING CART!

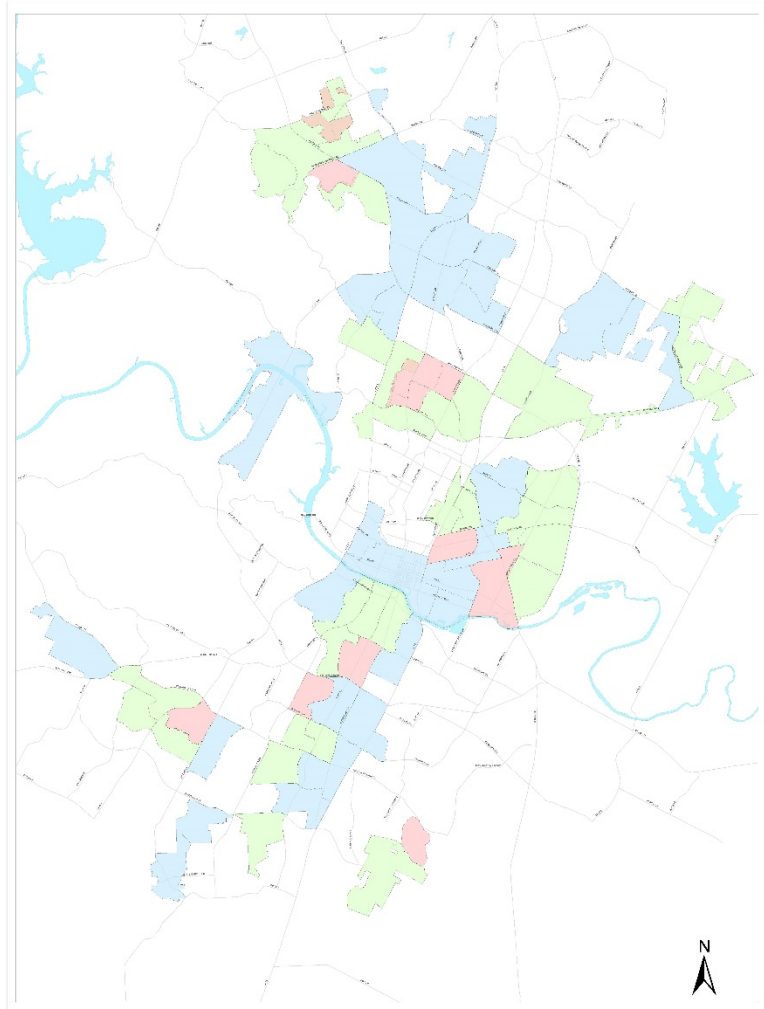


Curbside Composting Collection


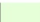



- Weekly Collection
- New green cart
- Food Scraps
- Yard Trimmings
- 2017 first expansion year
- 2020 in all homes

Curbside Composting



**Austin Resource Recovery
Curbside Composting Program**

-  Pilot Areas
-  Phase 1 Expansion
-  Phase 2 Expansion

- 32 gallon cart
- Food Scraps
- Yard Trimmings
- Data on tonnage collected

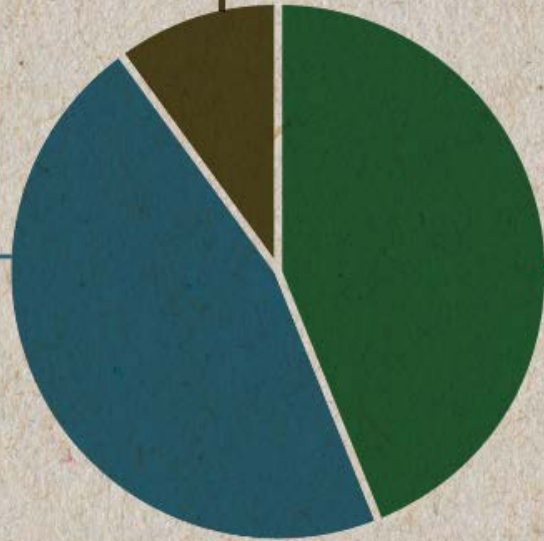
Why Composting is Important

WHAT'S IN OUR TRASH?

44% of Austin's residential trash can be recycled

46% of Austin's residential trash can be composted

10% of Austin's residential trash is actually trash



BENEFITS OF COMPOSTING

- Improve Austin's air quality
- Reduce harmful methane gasses
- Reduce Austin's dependence on landfills



What Goes In?

WHAT GOES INTO YOUR GREEN CART

If it grows, it goes!



FOOD SCRAPS

- Cooked or raw meat, poultry and seafood (including bones)
- Cheese & dairy products
- Fruits & vegetables
- Grains, breads, pastas & baked goods
- Tea bags & tea leaves
- Nuts, jelly, candy, snack foods
- Eggshells, leftover & spoiled food



YARD TRIMMINGS

- Grass clippings
- Small branches
- Small tree limbs
- Tree roots
- Flowers
- Leaves
- Plants
- Straw



FOOD-SOILED PAPER

- Paper bags, napkins, towels, plates & cups
- Paper take-out containers & take-out boxes (with no plastic or wax coating)
- Pizza boxes
- Coffee filters
- Microwavable popcorn bags
- Newspaper
- Tissues



NATURAL FIBERS

- Popsicle sticks
- Sawdust (in paper bags)
- Shredded paper
- Toothpicks
- Wooden chopsticks
- Untreated wood

What Doesn't Go In?

KEEP THESE ITEMS OUT OF YOUR GREEN CART

Prohibited items cannot break down into nutrient-rich compost, or cause a safety hazard for collection crews. Check the list below to find out what to keep out of your green cart:

- Aluminum
- Animal carcasses
- Ceramics
- Cigarette butts & ashes
- Clothing
- Diapers
- Fats, oils & grease
- Glass
- Glossy paper
- Hazardous waste
- Landscape timbers
- Liquids
- Medical Waste
- Metal
- Pet waste
- Plastic bags
- Plastic containers
- Plastic straws
- Rocks
- Styrofoam
- Trash
- Treated or painted lumber
- Tree stumps
- Treated or painted wood
- Wine corks



For a complete, up-to-date list of accepted materials, visit austintexas.gov/austincomposts

Kitchen Compost Collection



STEP 1

Keep your kitchen collector in a convenient location in your kitchen, such as on the counter top, under the sink or in the freezer.



STEP 2

While cooking or cleaning up, place leftover food scraps and food-soiled paper into your kitchen collector.



STEP 3

Empty the contents of your kitchen collector into your green composting cart before you set out the cart each week.

Backyard vs Curbside Composting

	Backyard	Curbside
Meat, Poultry, Fish		X
Bones		X
Compostable Bags		X
Food soiled paper	X	X
Coffee grounds	X	X
Cotton balls	X	X
Pet hair		X

*this is not an exhaustive list

Contamination in Composting



Contamination commonly found in compost

- Non-food items
- Diapers
- Recyclables
- Trash
- Rocks
- Construction materials and other debris
- Tree trunks
- Fats, oils, grease
- Pet waste
- Treated or painted wood
- Wine Corks

Curbside Clothing & Household Items Recycling

- We encourage you to donate items to charities first
- Collection is every other week, same day as recycling
- Use the green bag, provided by Simple Recycling, a for-profit company. Set at the curb, **not** in the blue recycling cart
- Simple Recycling will leave a new bag tied to the cart

<http://austintexas.gov/clothing>



Yard Trimmings Collection



- Weekly Collection
- No longer than 5 feet
- No larger than 3 inches in diameter
- Bundled or in lawn leaf bags

Large Brush Collection



- Collection twice a year
- Large storm debris
- Brush too large for weekly collection

Bulk Collection

- Collection twice a year
- Items too large for your trash cart

MAKE SEPARATE PILES



Metal Items

5 feet



Tires

5 feet



Non-Metal Items

Street Sweeping & Dead Animal Collection



- Street Sweeping
 - Residential 6 times a year
 - Major streets once a month
- Dead animal collection
 - Call 3-1-1
 - austinrecycles.com online form
- Funded by Clean Community Fee

Recycle & ReUse Drop Off Center



- 2514 Business Center Dr.
- Mon – Fri: 9 a.m. to 5 p.m.
- Sat 7 a.m. to noon



Household Hazardous Waste Collection



- Household hazardous waste
- Brush and yard trimmings
- Recyclables
- Electronics and Appliances
- Tires

ReBlend Paint



- FREE
- ReBlend Paint
 - 3 colors
- Cleaning Supplies at the Reuse Store
- Mulch



Home Composting Classes



- Attend a class
 - In person
 - Online/ YouTube
 - Request a class
- \$75 rebate

Chicken Keeping Classes

CHICKEN KEEPING

DO YOUR PART TO
REACH ZERO WASTE!

EARN A \$75 REBATE
FOR A CHICKEN COOP!

TAKE A CLASS AND LEARN HOW
TO KEEP FOOD SCRAPS OUT OF
THE LANDFILL.



austintexas.gov/chickenkeeping

Register or find out more




- Attend a class
 - In person
- \$75 post purchase rebate for chicken coop
- Available to City of Austin residents


Online Tools

MY SCHEDULE


English



[My Schedule](#)



[What Do I Do With...](#)



[Need help?](#)

Please type your home address:

Example: 301 W. Second St., Austin, Texas

[Terms of Service](#)

[List of Materials](#)


Powered by 


My Schedule


- Collection reminders
- austinrecycles.com

Online Tools

WHAT DO I DO WITH... English

 My Schedule

 What Do I Do With...

 Need help?

Type the name of a waste item and we'll tell you how to recycle or dispose of it.

[Terms of Service](#)

[List of Materials](#)

Powered by 

What do I Do With...?

- Search for any unwanted item
- austinrecycles.com

Business Outreach Team



- Free Consulting
- Onsite Technical Assistance
- Educational Resources Online
- Presentations and Training
- Ordinance Verification
- Guidance for Best Practices

Universal Recycling Ordinance



- For commercial & multifamily properties with more than 4 units
- Must provide recycling for 5 items
- Must provide education to tenants and employees
- Must provide signs
- Submit an Annual Diversion Plan
- www.austintexas.gov/uro

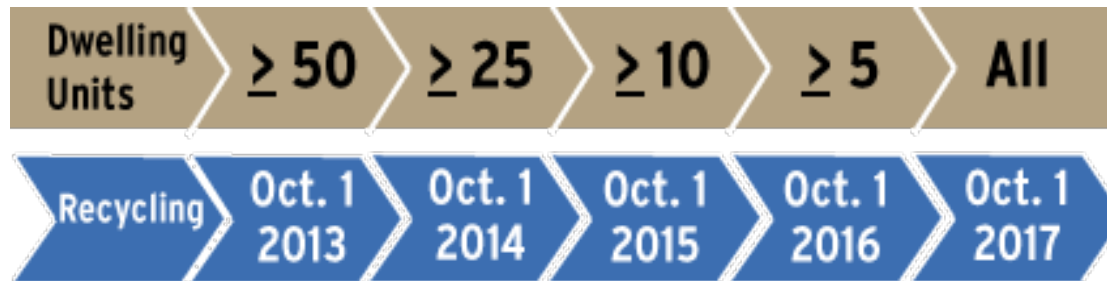
Multifamily Phase In



Multifamily Residential Properties

Multifamily properties including:

- Apartments
- Condominiums
- Mobile home parks
- Private funded dorms
- Assisted living facilities



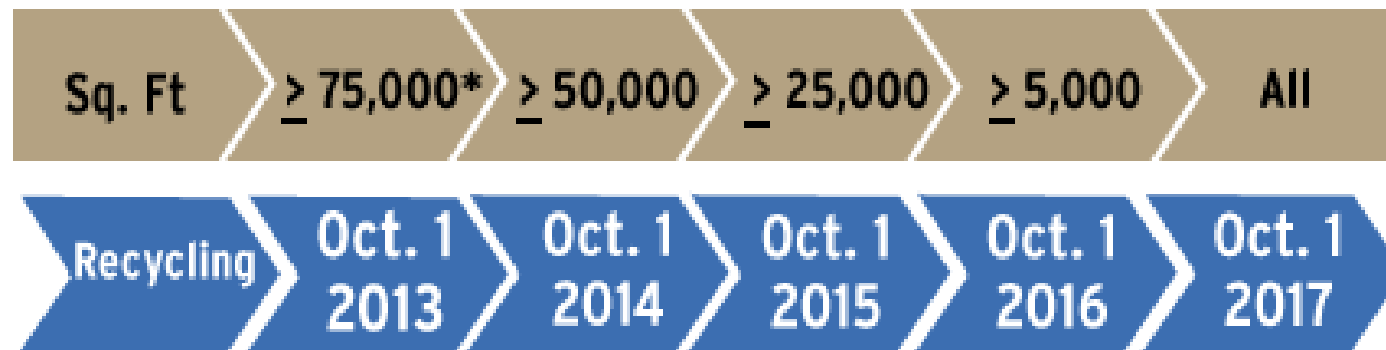
Commercial Business Phase In



Commercial Non-Residential Properties

Non-residential commercial properties, including:

- Retail
- Medical facilities
- Hotels and Motels
- Religious buildings
- Commercial office buildings
- Private educational facilities
- Industrial and Manufacturing Facilities



Commercial Composting

By Oct. 1, 2018, all food enterprises* will be required to ensure their employees have convenient access to organics diversion services.

Food service enterprises include:

- Grocers
- Farmers' Markets
- Food and Beverage Industry (restaurants, bars, catering)

