

AUSTIN RESOURCE RECOVERY

RECYCLE & REUSE





DROP-OFF CENTER



RECYCLE AND REUSE DROP-OFF CENTER

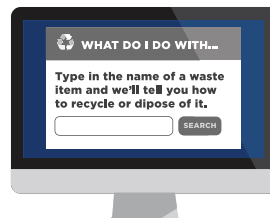
At the Recycle & Reuse Drop-Off Center, you can drop off many items to be recycled, reused or safely discarded. You can also pick up free items to reuse yourself.

The center provides four types of services:

-  Recycling
-  Brush and yard trimmings
-  Household hazardous waste
-  Reuse

ELIGIBILITY AND COST

Most Recycle & Reuse Drop-Off Center services are free to Austin residents, but some services have a fee. Eligibility and cost information are listed with each service.



WHAT DO I DO WITH...?

Use the *What Do I Do With?* tool at austinrecycles.com to find out whether the Recycle & Reuse Drop-Off Center accepts an item.

HOURS

Monday–Friday: 9 a.m. to 5 p.m.

Saturday: 7 a.m. to noon

Closed on all City holidays

ADDRESS

2514 Business Center Drive
Austin, TX 78744

CONTACT

Recycling And Reuse: 512-974-4373

Household Hazardous Waste: 512-974-4343



DROP-OFF



HOUSEHOLD HAZARDOUS WASTE

Drop off your household hazardous waste for safe disposal or reuse. Throwing household hazardous waste in the trash or pouring it down the drain is dangerous and harmful to the environment.

ELIGIBILITY AND COST

- Free for Austin and Travis County residents.
- Fees apply if you do not live in Austin or Travis County.
- You can drop off up to 30 gallons annually.
- Businesses are not eligible to drop off hazardous waste.

For information about how businesses can dispose of hazardous waste, call **512-974-4336**.

SAFETY GUIDELINES

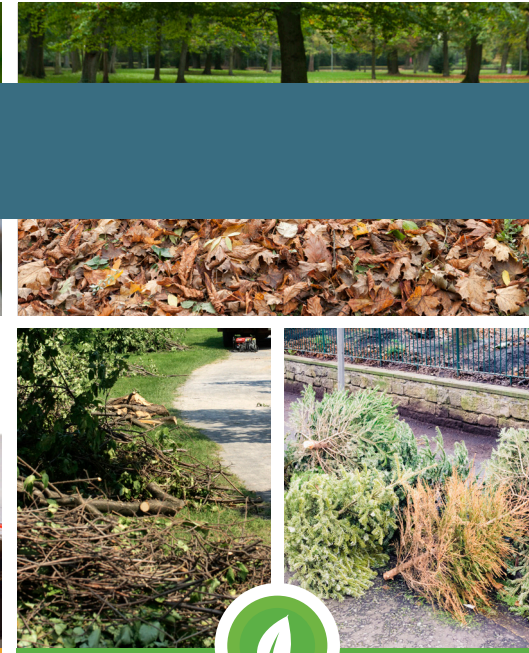
- Bring products in original containers; do not mix.
- Bring items in 5-gallon (or smaller) containers.
- Put small containers upright in sturdy boxes.
- If something is leaking, put it in a larger container and absorb the spill with cat litter.

ACCEPTED ITEMS

- Cleaning products
- Automotive fluids and oil filters
- Paint and thinners
- Fluorescent light bulbs
- Batteries (car and household)
- Pesticides and herbicides
- Mercury
- Aerosol cans
- Pool chemicals
- Cooking oil
- Propane cylinders

NOT ACCEPTED

- Radioactive materials
- Syringes and medical waste
- Explosive materials (including ammunition)
- Any waste generated by a business



BRUSH AND YARD TRIMMINGS

ELIGIBILITY AND COST

Free for Austin residents, but others pay \$6.50 per cubic yard.

ACCEPTED BRUSH AND YARD TRIMMINGS

- Tree limbs
- Leaves
- Christmas trees (no decorations)

NOT ACCEPTED

- Treated or painted lumber
- Particle board
- Construction materials



RECYCLABLES

ELIGIBILITY AND COST

Free for everyone.

ACCEPTED ITEMS

- Plastic bags (clean and dry)
- Plastic film / plastic wrap (clean and dry)
- Styrofoam (clean and dry)
- Scrap metal
- Large hard plastic items
 - Lawn chairs
 - Children's pools
 - Pet carriers
 - Trash cans
- Single-stream recyclables
 - Cardboard and paper
 - Hard plastic, cans and foil
 - Glass bottles and jars

NOT ACCEPTED

- Mattresses
- Furniture
- Toilets
- Non-recyclable trash

ELECTRONICS AND APPLIANCES

ELIGIBILITY AND COST

Free for everyone.

EXAMPLES OF ACCEPTED ITEMS

If it plugs in, we probably accept it.

- Televisions
- Computers
- Printers and fax machines
- Cell phones and chargers
- Lawn mowers and weed eaters
- Large appliances
 - Washers and dryers
 - Stoves
 - Water heaters
 - Air conditioners
 - Exercise equipment
- Small appliances
 - Lamps
 - Microwaves
 - Kitchen appliances

TIRES

ELIGIBILITY AND COST

There is a fee to drop off tires. The fee depends on the size of the tire:

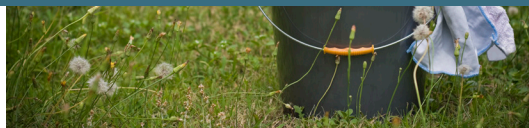
- 19 in. or smaller – \$6 each
- 20 in. or larger – \$7 each



WHAT DO I DO WITH...?

Still not sure whether the Recycle & Reuse Drop-Off Center accepts an item? Use the *What Do I Do With?* tool at **austinrecycles.com** to find out.

PICK-UP



REUSE STORE



AUSTIN REBLEND PAINT



MULCH

Many materials that are dropped off at the center are in usable condition. These items go to the ReUse Store, where other people can pick them up.

ELIGIBILITY AND COST

Free for everyone.

ITEM AVAILABILITY

Availability varies, but items include:

- Art supplies
- Cleaning products
- Household chemicals
- Automotive fluids

Austin ReBlend paint is recycled from paint dropped off at the center.

ELIGIBILITY AND COST

Free for individuals and nonprofits. Not available to businesses.

ITEM AVAILABILITY

- 100% post-consumer paint with low VOCs
- Available in three colors:



Mulch is available for pickup. You must load the mulch yourself.

ELIGIBILITY AND COST

Free for everyone.

WHAT TO BRING

- Pitchfork or shovel
- Work gloves
- Containers to hold the mulch

AUSTIN'S ZERO WASTE GOAL

The City of Austin's Zero Waste goal is to **reduce the amount of waste sent to area landfills by 90 percent by 2040**. By using the Recycle & Reuse Drop-Off Center's services, you can do your part to achieve Zero Waste!

