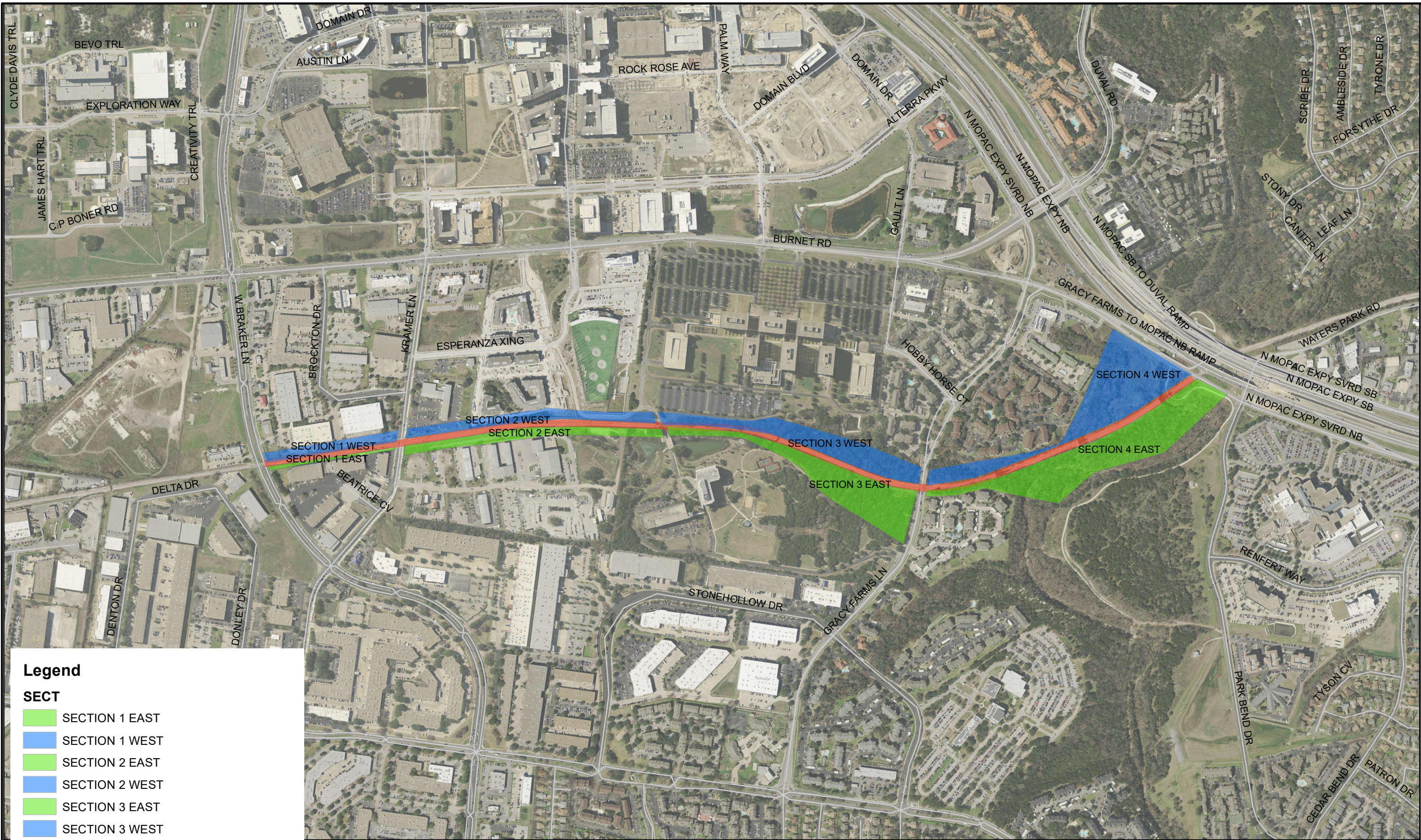


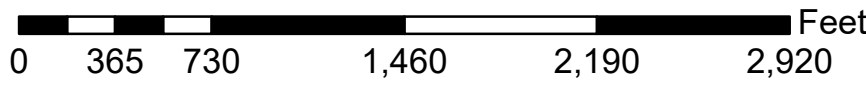
2. Overall Trail Corridor



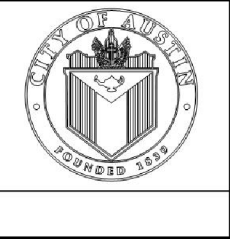
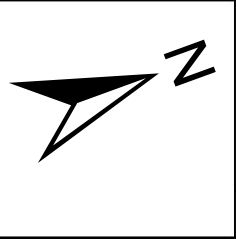
Legend

SECT

- SECTION 1 EAST
- SECTION 1 WEST
- SECTION 2 EAST
- SECTION 2 WEST
- SECTION 3 EAST
- SECTION 3 WEST
- SECTION 4 EAST
- SECTION 4 WEST
- CAPMETRO RED LINE RAIL ALIGNMENT
- TRANSPORTATION.street_segment



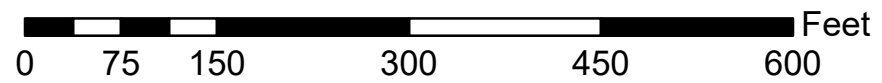
CITY OF AUSTIN, TEXAS
DEPARTMENT OF PUBLIC WORKS
ENGINEERING SERVICES DIVISION
RED LINE TRAIL - WALNUT CREEK
TRAIL TO BRAKER LN
OVERALL TRAIL CORRIDOR





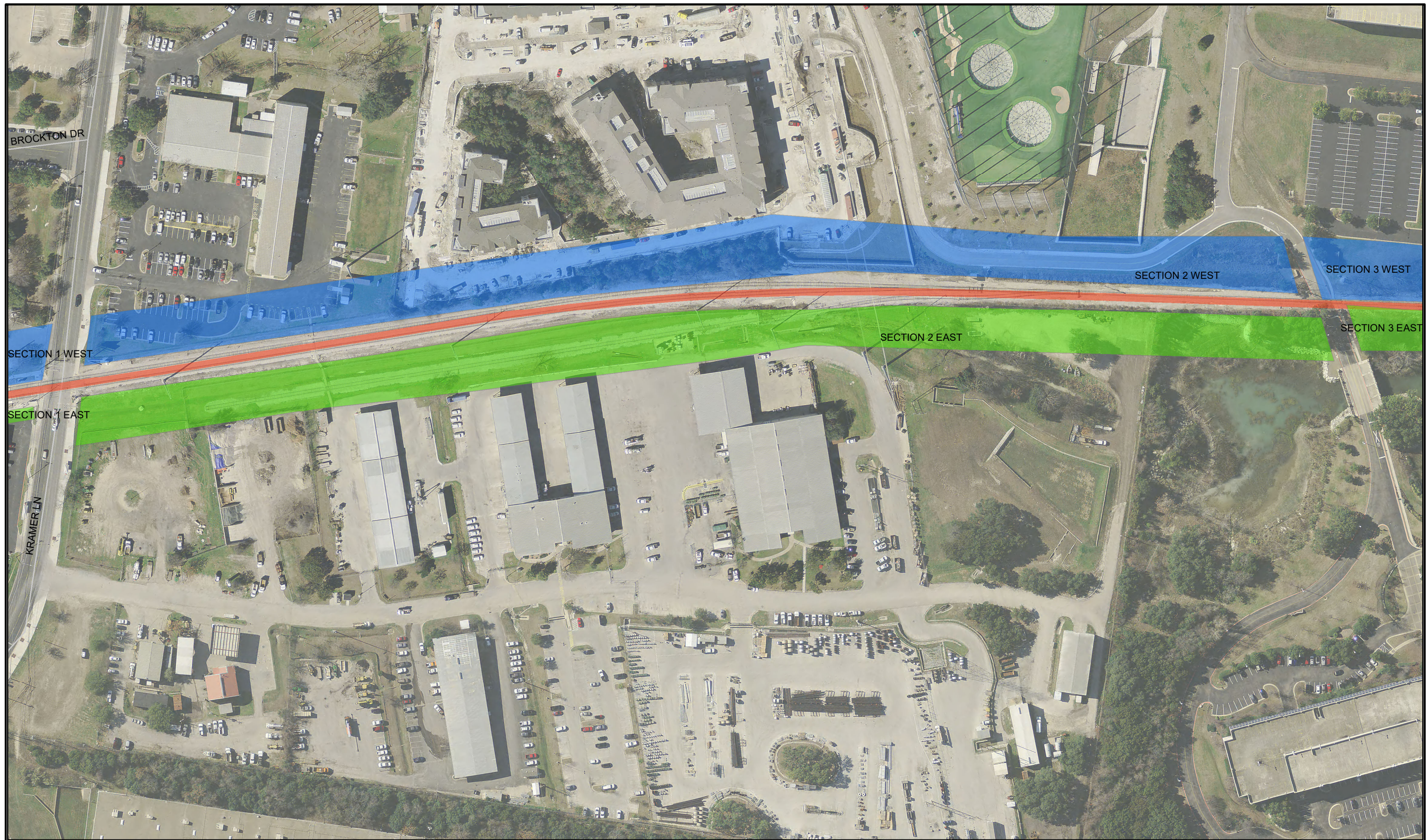
Legend

 CAPMETRO RED LINE RAIL ALIGNMENT



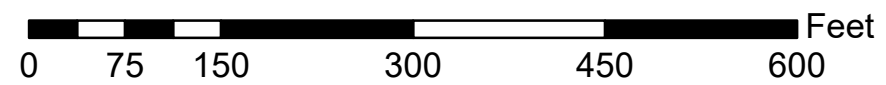
CITY OF AUSTIN, TEXAS
DEPARTMENT OF PUBLIC WORKS
ENGINEERING SERVICES DIVISION
**RED LINE TRAIL - WALNUT CREEK
TRAIL TO BRAKER LN**
SECTION 1 EAST / WEST





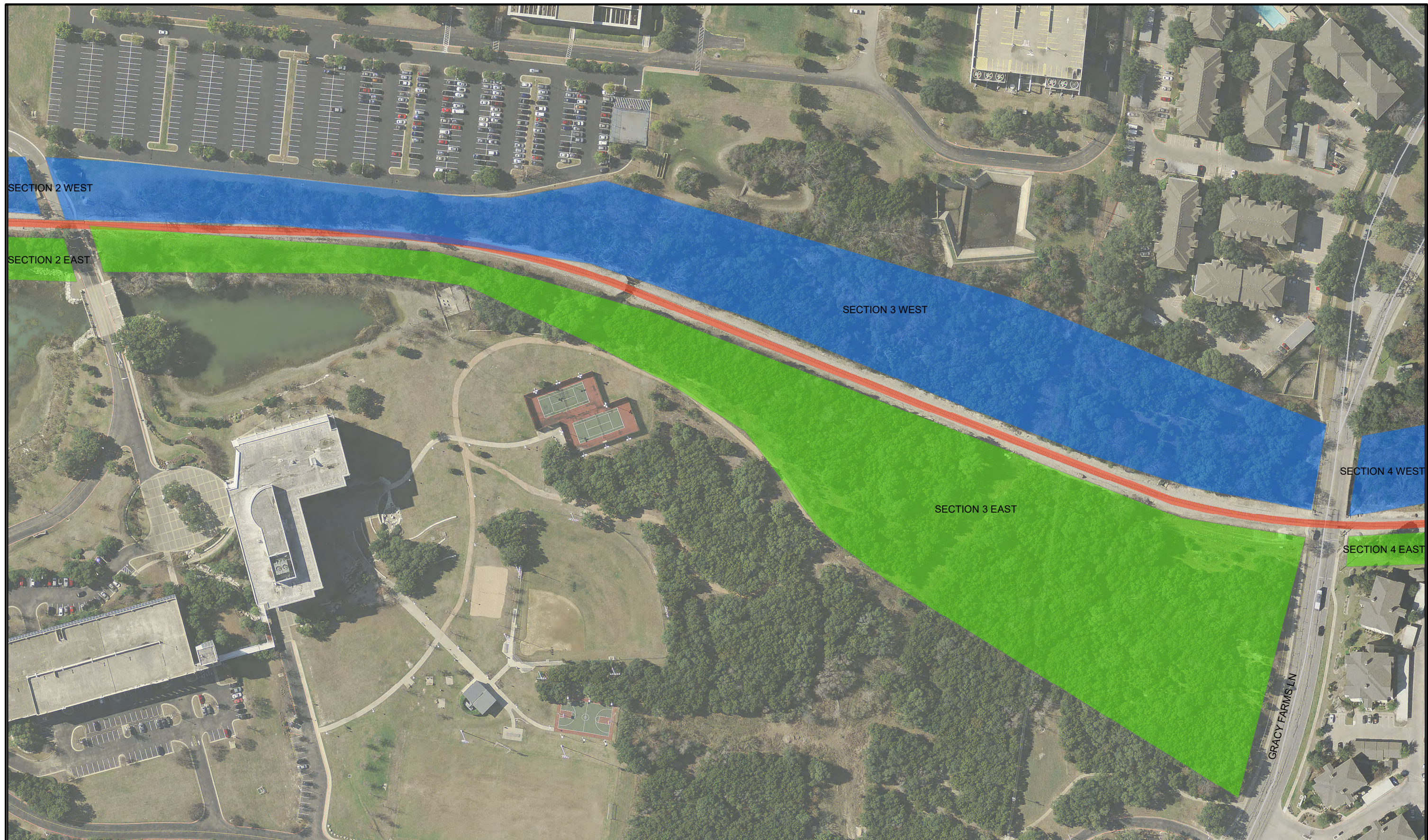
Legend

 CAPMETRO RED LINE RAIL ALIGNMENT



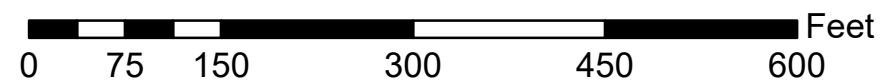
CITY OF AUSTIN, TEXAS
DEPARTMENT OF PUBLIC WORKS
ENGINEERING SERVICES DIVISION
**RED LINE TRAIL - WALNUT CREEK
TRAIL TO BRAKER LN**
SECTION 2 EAST / WEST





Legend

 CAPMETRO RED LINE RAIL ALIGNMENT



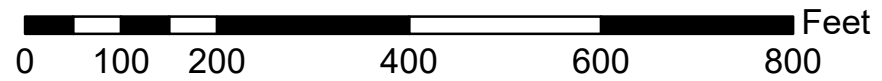
CITY OF AUSTIN, TEXAS
DEPARTMENT OF PUBLIC WORKS
ENGINEERING SERVICES DIVISION
**RED LINE TRAIL - WALNUT CREEK
TRIAL TO BRAKER LN**
SECTION 3 EAST / WEST





Legend

 CAPMETRO RED LINE RAIL ALIGNMENT



CITY OF AUSTIN, TEXAS
DEPARTMENT OF PUBLIC WORKS
ENGINEERING SERVICES DIVISION
RED LINE TRAIL - WALNUT CREEK
TRAIL TO BRAKER LN
SECTION 4 EAST / WEST

