



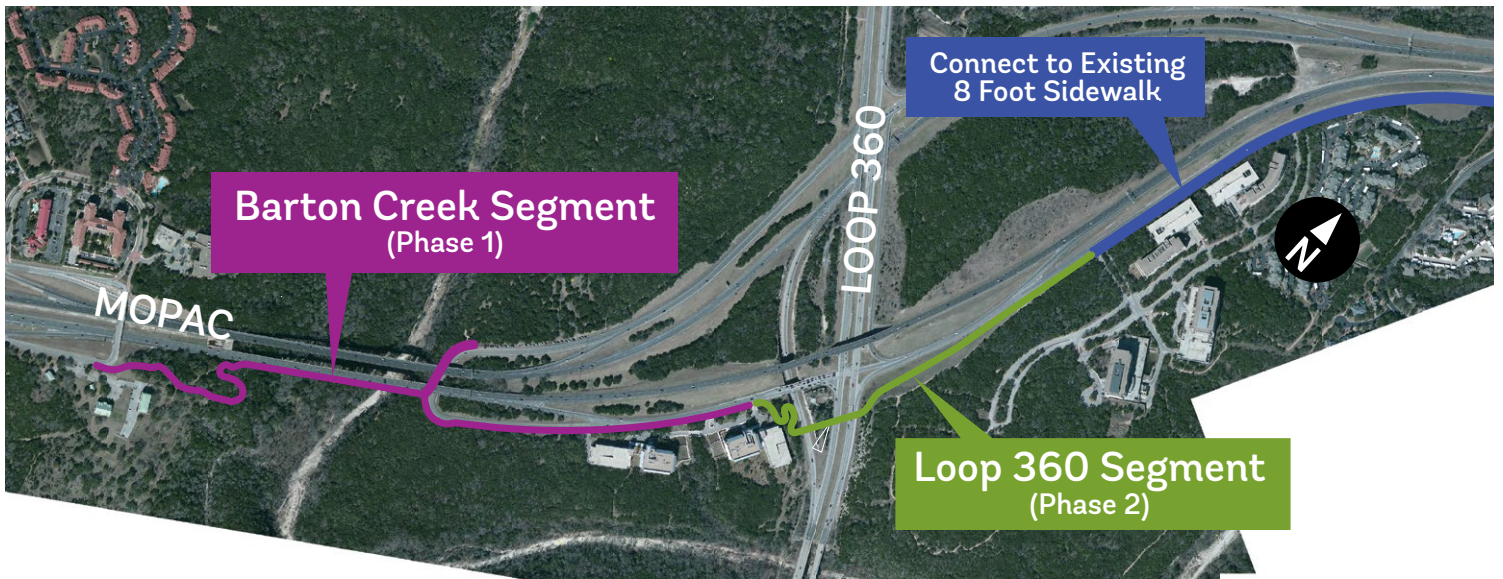
MOPAC MOBILITY BRIDGES CONSTRUCTION UPDATE



SPRING 2016

ABOUT THE PROJECT

Construction of the 14-foot-wide, 1,045-foot-long MoPac Mobility Bridges (formerly called Mopac Bicycle & Pedestrian Bridge) began in Feb. 2014. One bridge is being built adjacent to MoPac and spans the Barton Creek Greenbelt at MoPac, and two additional bridges will be built which span Loop 360.



PHASE 1 BARTON CREEK SEGMENT

The Barton Creek Segment is taking shape. Over the past three months we have completed major milestones including finalizing the construction of the columns and the erection of the bridge beams. Retaining walls along the trail portion are also taking shape. For the next several months the public will experience nightly lane closures on Mopac so that we are able to place the concrete for the bridge deck and railings.

JANUARY 2016

Completed all substructure work.
Completed beam erection.

FEBRUARY 2016

Placement of bridge deck forms.
Began construction of retaining walls along trail. Completed work along northbound frontage road cycle track.

MARCH 2016

Completed concrete painting.
Continued with grading and retaining walls along the trail.





Grading of bike path in Barton Creek



Switch back trail



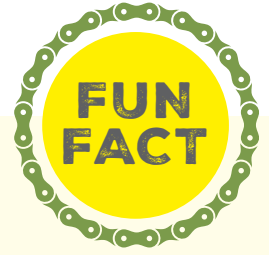
Bridge nearing completion



Elevation on recently placed bridge beams



Bridge column



Did you know that Austin joins other Texas cities, Houston and Dallas, that have a dedicated bike bridge.

PHASE 2 360 SEGMENT

During the last three months the majority of the path was completed. The last of the concrete pathway is being placed and pathway lighting is being installed.

JANUARY 2016

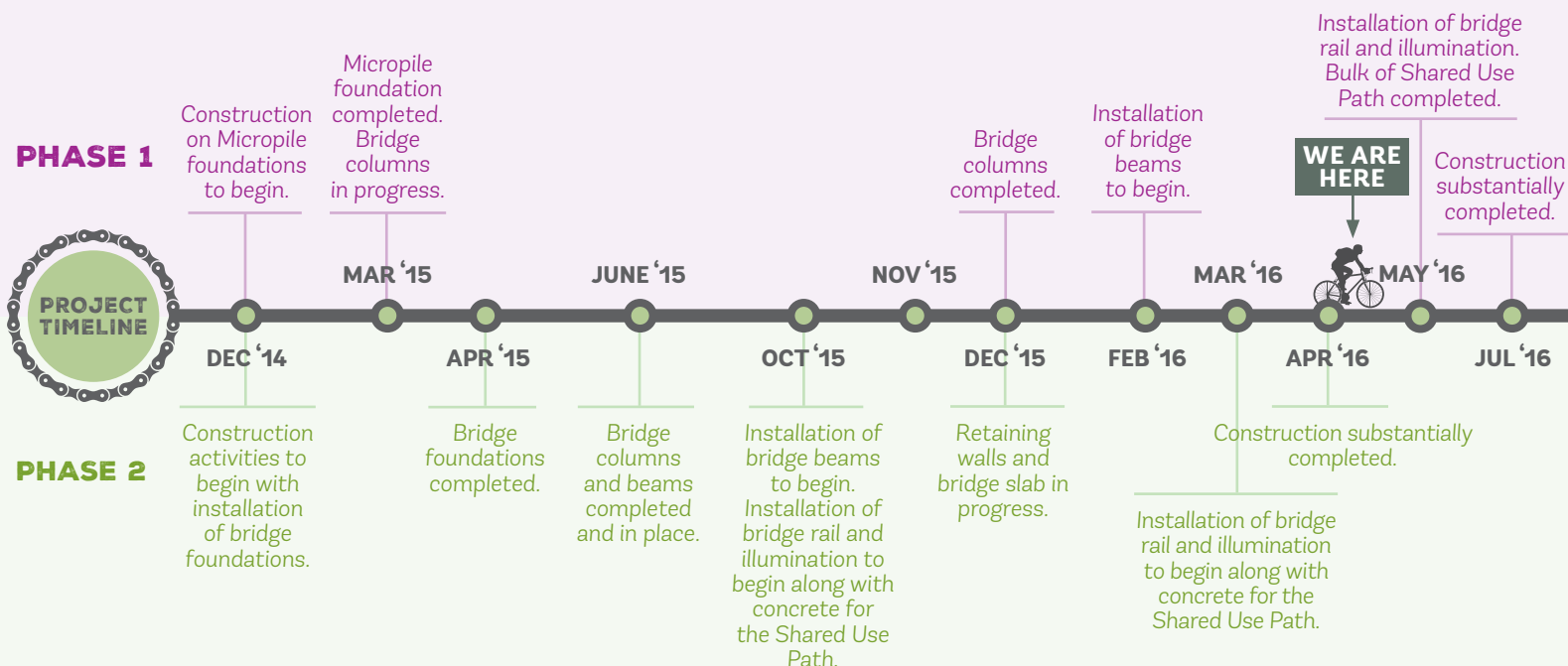
Concrete path was completed.

FEBRUARY 2016

Pathway lighting was installed.

MARCH 2016

Began wiring of pathway lighting, installed landscaping and trees north of Loop 360. Completed pathway south of Loop 360. Began installation of railings along pathway.



THE MOPAC MOBILITY BRIDGES ARE A JOINT PROJECT OF THE CITY OF AUSTIN, THE TEXAS DEPARTMENT OF TRANSPORTATION AND THE CAPITAL AREA METROPOLITAN PLANNING ORGANIZATION (CAMPO).



FOR MORE INFO:
 pdurbantrails@austintexas.gov
 Phone (512) 974-3570
 austintexas.gov/urbantrails