

City of Austin

Northern Walnut Creek Trail Ph2 (NWCT Ph 2)

Public Meeting - Walnut Creek Elementary

April 11, 2017

City Project Manager: Jessica Salinas, PMP
Urban Trails Program Manager: Janae Ryan, EIT, CFM
PARD Sponsor: D'Anne Williams, PLA
RPS Project Manager: Josh Henke, PE



NWCT Ph2 Trail



Northern Walnut Creek Trail Ph 2 Project Team

- ❑ City Project Manager-Jessica Salinas
- ❑ City Urban Trails Program Manager-Janae Ryan
- ❑ City of Austin Departments
 - ❑ Parks and Recreation Department- D'Anne Williams
 - ❑ Watershed Protection Department- Eric Loucks
 - ❑ Public Works Information Office- Alexandria Bruton
- ❑ Project Consultant & Subconsultants:
 - ❑ **RPS Group- Josh Henke, PE (Project Manager) & Jason Devaney**
 - ❑ Altura Solutions - ADA/TDLR Review
 - ❑ Hejl Lee & Associates - Erosion/Sedimentation Control and Tree Protection
 - ❑ Hill Country Environmental Inc - Environmental Assessment/Impact
 - ❑ Holt Engineering Inc - Geotechnical
 - ❑ Jose I Guerra Inc - Structural
 - ❑ McGray & McGray - Surveying
 - ❑ Winterowd Assoc - Landscape Architecture
 - ❑ Zara Environmental LLC - Environmental Species Survey

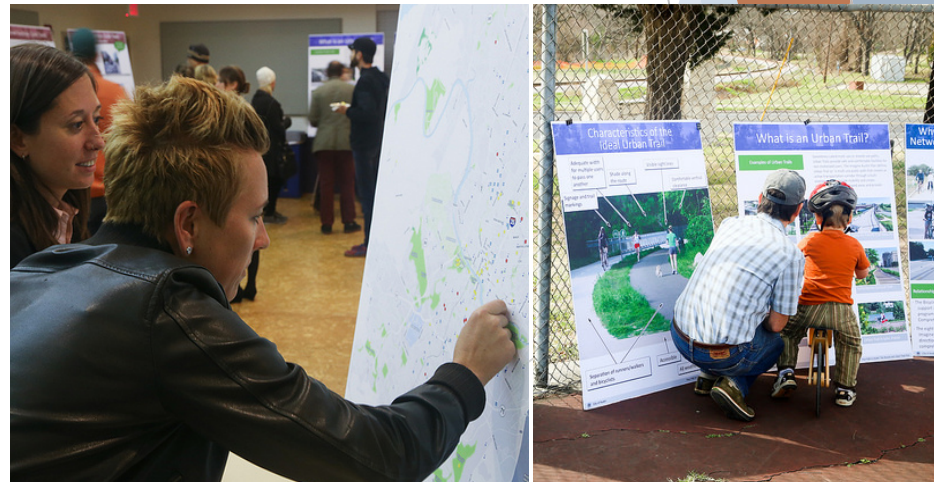


NWCT Ph2 Trail



Public Meeting Objective

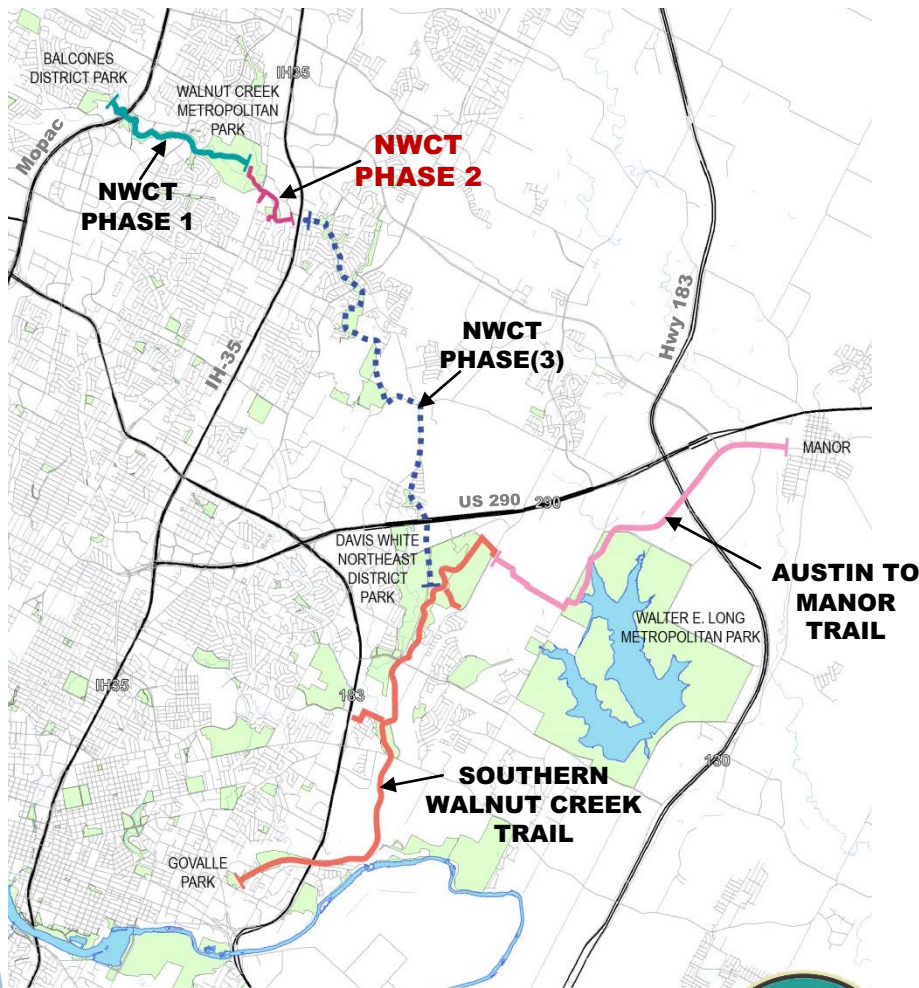
- ▶ Inform/Explain the overall project (15 mins)
- ▶ History & Criteria (5 mins)
- ▶ Trail Alignment (15 mins)
- ▶ Next Steps (10 mins)
- ▶ Questions



NWCT Ph2 Trail



Project Overview - BIG PICTURE



Walnut Creek Trail:

- ▶ A 10' wide concrete Hike and Bike Trail connecting North Austin with the Lady Bird Lake Hub and Spoke Trail System

Phase 1 (OPEN)

- ▶ 2.6 miles

Phase 2 (DESIGN)

- ▶ 1.5 miles

Phase 3 (PER)

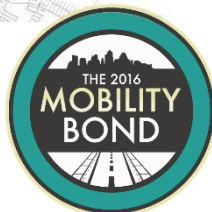
- ▶ Preliminary Engineering Report starting 2017
- ▶ Approx. 5 miles

Southern Walnut Creek Trail (OPEN)

- ▶ 7.3 miles



NWCT Ph2 Trail



North Walnut Creek Trail Phase 2

▶ Project Goals

- ▶ Connect Northern Walnut Creek Trail Ph 1 to IH-35
- ▶ Connect neighborhoods, businesses and schools along the way
- ▶ Provide a safe pedestrian and bicycle friendly route suitable for all ages & abilities

▶ Funding:

- ▶ PARD: \$1M
- ▶ TxDOT Grant = \$1.5M
- ▶ 2016 Mobility Bond Budget = \$2.5M

▶ Segment 1: Walnut Creek Metropolitan Park to Oakbrook Dr or (Walnut Bluffs Trailhead)

▶ Segment 2: Oakbrook Dr or Walnut Bluffs to IH-35



NWCT Ph2 Trail



History, Trail Alignment Review & Criteria

- ▶ Public Feedback 2015 - Analyzed alternative route
 - ▶ Utilize electrical easement across private property
 - ▶ Apartment complex is a gated community
- ▶ Trail alignment using pre-identified criteria
 - ▶ Environmental impacts
 - ▶ Topographic conditions
 - ▶ Safety concerns
 - ▶ Land constraints
 - ▶ Integration into existing connectivity network
 - ▶ Accessibility to nearby schools, neighborhoods & major businesses
- ▶ Ongoing discussions with TxDOT to understand the IH-35 improvements and connection to Southern Walnut Creek Trail
 - ▶ Northern Walnut Creek Trail Ph 3 - Preliminary Engineering Report beginning in 2017



NWCT Ph2 Trail



Design Consideration of Trails

- ▶ Ensure Hydraulic model shows no impact
- ▶ Eliminate Conflicts - Motorized / Non Motorized
- ▶ Eliminate Conflicts - Trail Riders / Leisure Riders
- ▶ Avoid Trees - Environmental impacts
- ▶ Avoid Critical Environmental Features - caves, wetlands, habitat, high erosion areas and others
- ▶ Comply with ADA standards - ensure the least grade change



NWCT Ph2 Trail



TRAIL Summary

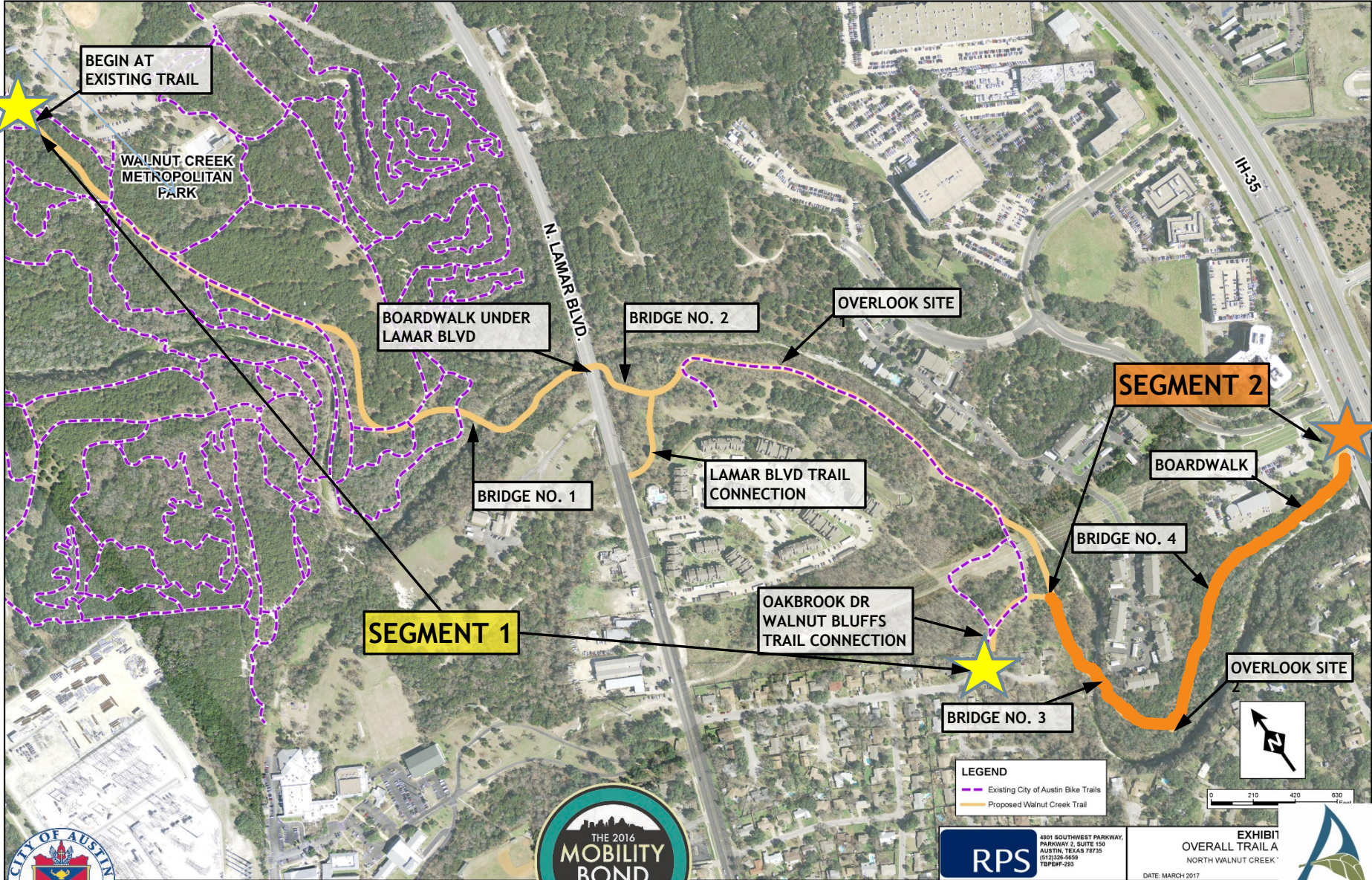
- ▶ Length = Approx. 8,000 Linear Feet (1.5 Miles)
- ▶ Width = 10 feet, with 2-5' of clear space/grass shoulders on each side
- ▶ Surface = Concrete
- ▶ Bridge Structures/Creek Crossings = 4
- ▶ Boardwalk Sections = 2
- ▶ Trail Connections = 2 (Lamar Blvd Trail and Oakbrook Dr/Walnut Bluffs Trail)
- ▶ Overlook Sites = 2
- ▶ Miscellaneous Improvements = Signage, and Landscaping
- ▶ No parking lot planned at Oakbrook Dr/Walnut Bluffs Trailhead
 - ▶ Parking and Public Facilities at Walnut Creek Metropolitan Park



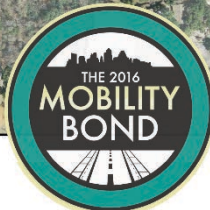
NWCT Ph2 Trail



Overall Trail Alignment



T:\GIS\exh\Overall Map.mxd



LEGEND
 - Existing City of Austin Bike Trails
 - Proposed Walnut Creek Trail

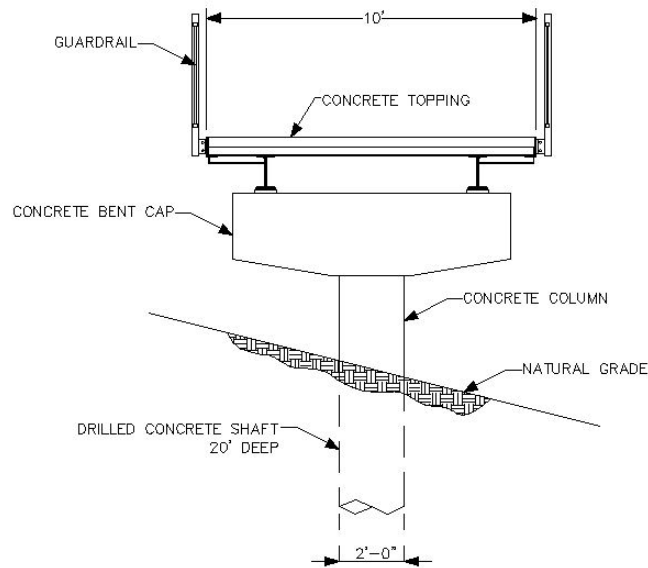
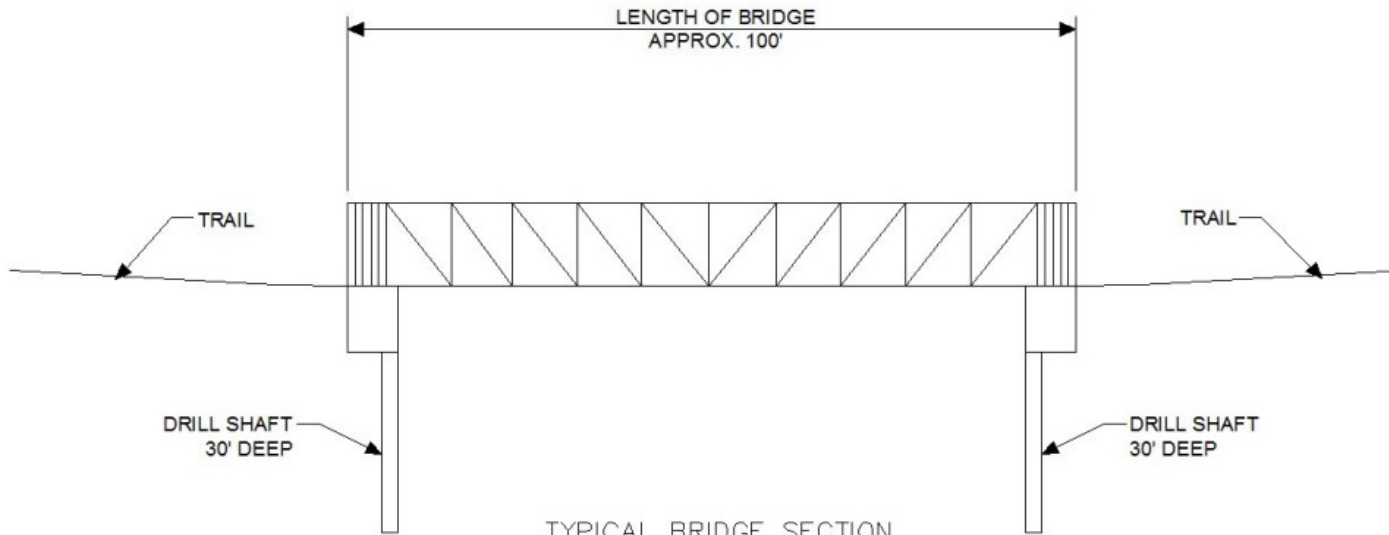
RPS
 4801 SOUTHWEST PARKWAY,
 PARKWAY 2, SUITE 150
 AUSTIN, TEXAS 78725
 (512) 326-2659
 TSP#F-203

EXHIBIT
 OVERALL TRAIL A
 NORTH WALNUT CREEK

DATE: MARCH 2017



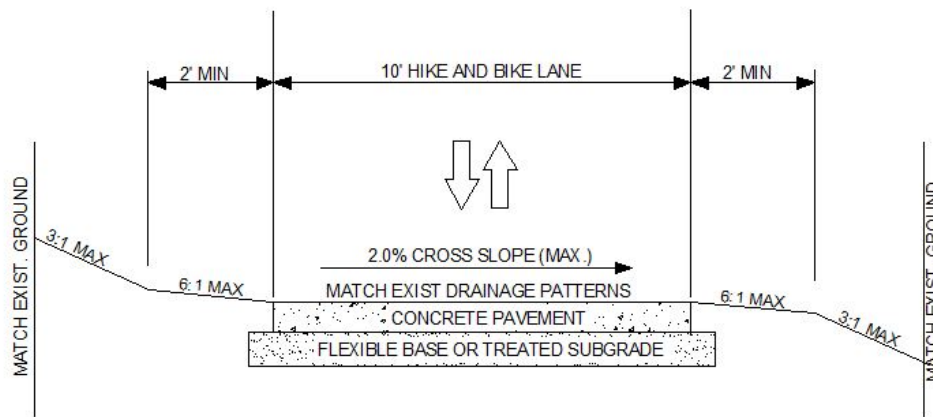
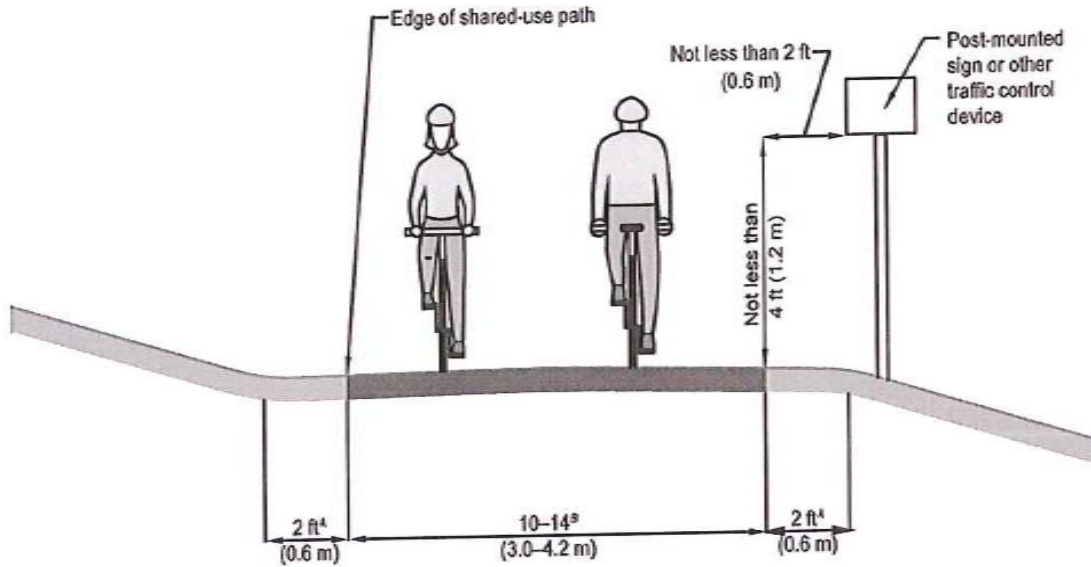
TRAIL Typical Cross-Sections



NWCT Ph2 Trail



TRAIL Typical Cross-Sections



TYPICAL TRAIL SECTION

Trail Location Overview

▶ PARKLAND

- ▶ The project will be located within City-owned parkland and drainage easements with public access rights dedicated to the City

▶ Existing Drainage Easement

- ▶ Southern portion of the trail on private property indicates that the City has the right to construct and maintain a thirty foot (30') wide pedestrian and bicycle trail

▶ State of Texas Property

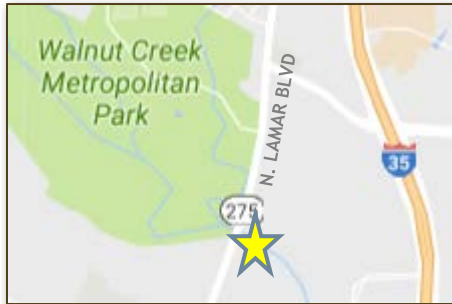
- ▶ A portion of the project at Lamar Boulevard and the Northbound IH-35 Frontage Road is located on State of Texas owned land, which will likely require a Multiple Use Agreement (MUA)

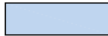




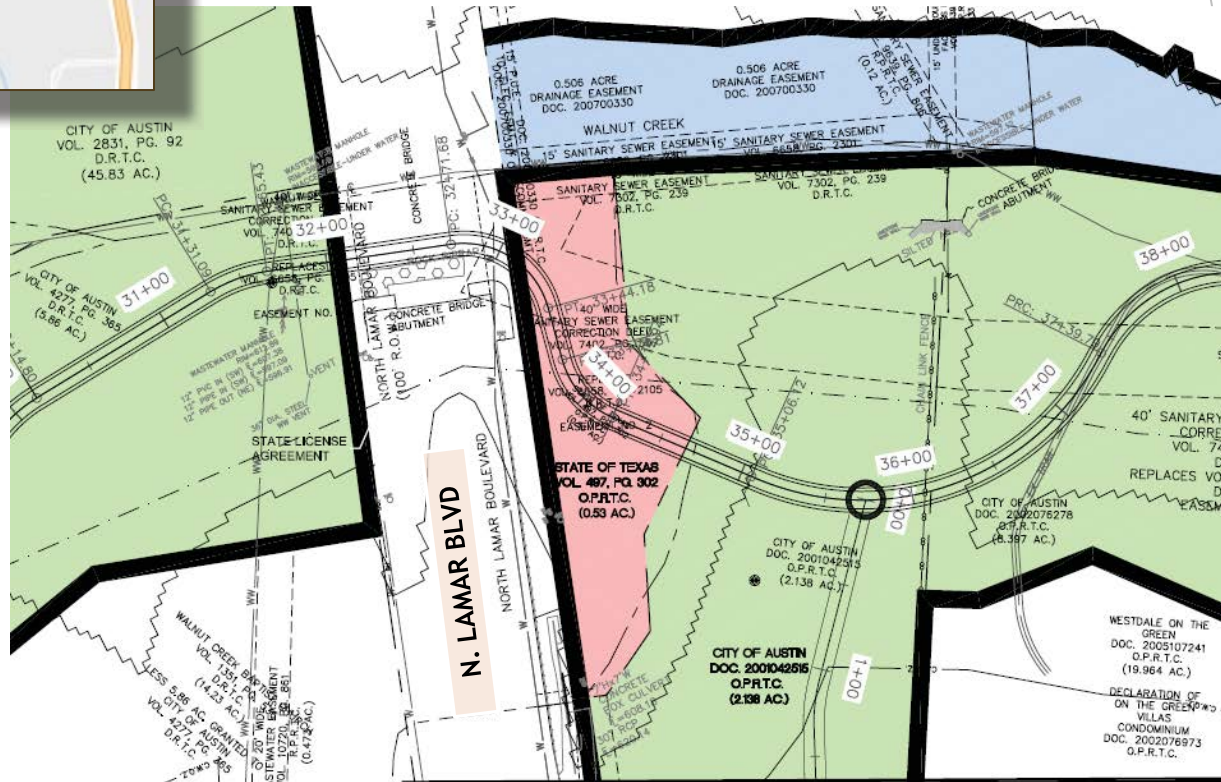
NWCT Ph2 Trail



Boardwalk under N. Lamar



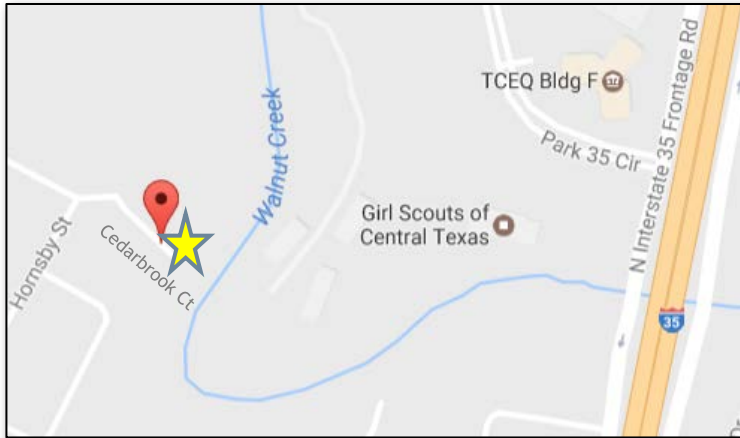
-  DRAINAGE EASEMENT
-  COA PARKLAND
-  STATE OF TEXAS





NWCT Ph2 Trail



Cedarbrook Court - Bridge #3



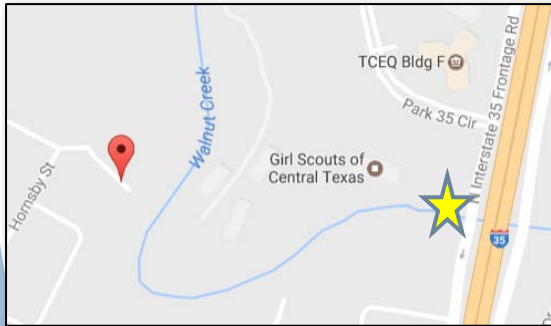
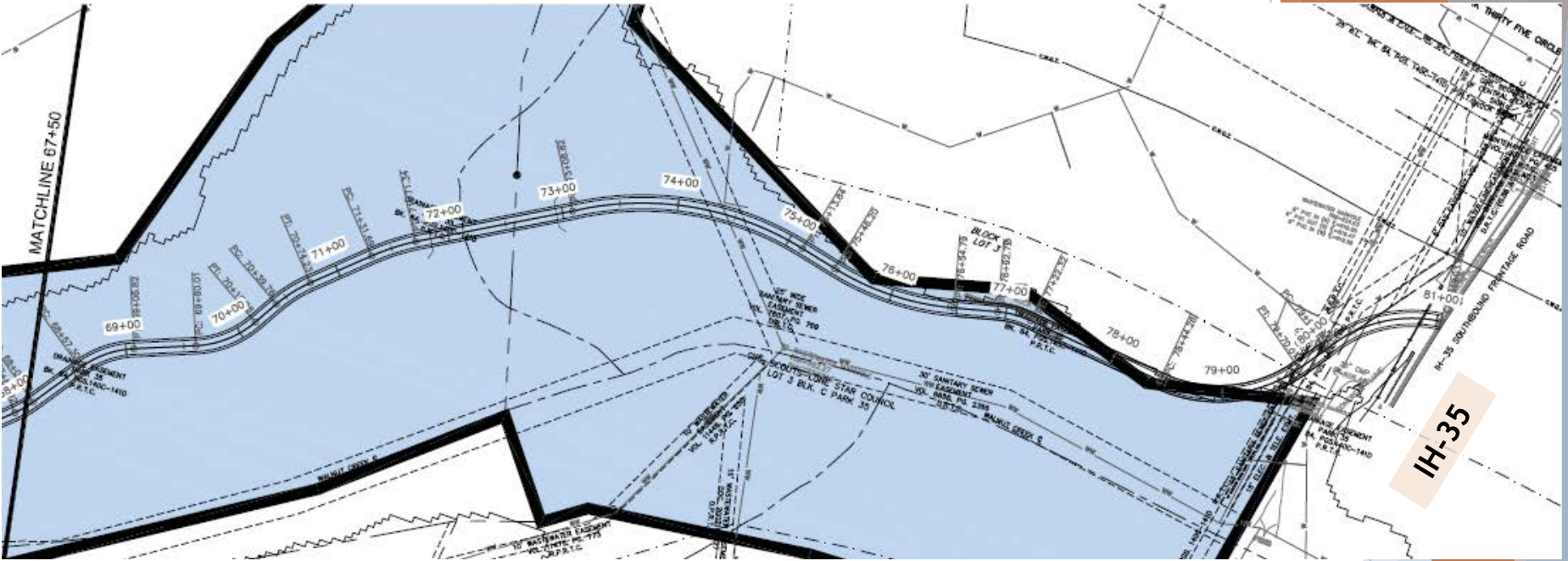
-  DRAINAGE EASEMENT
-  COA PARKLAND



NWCT Ph2 Trail



IH-35 connection Drainage Easement & TxDOT ROW



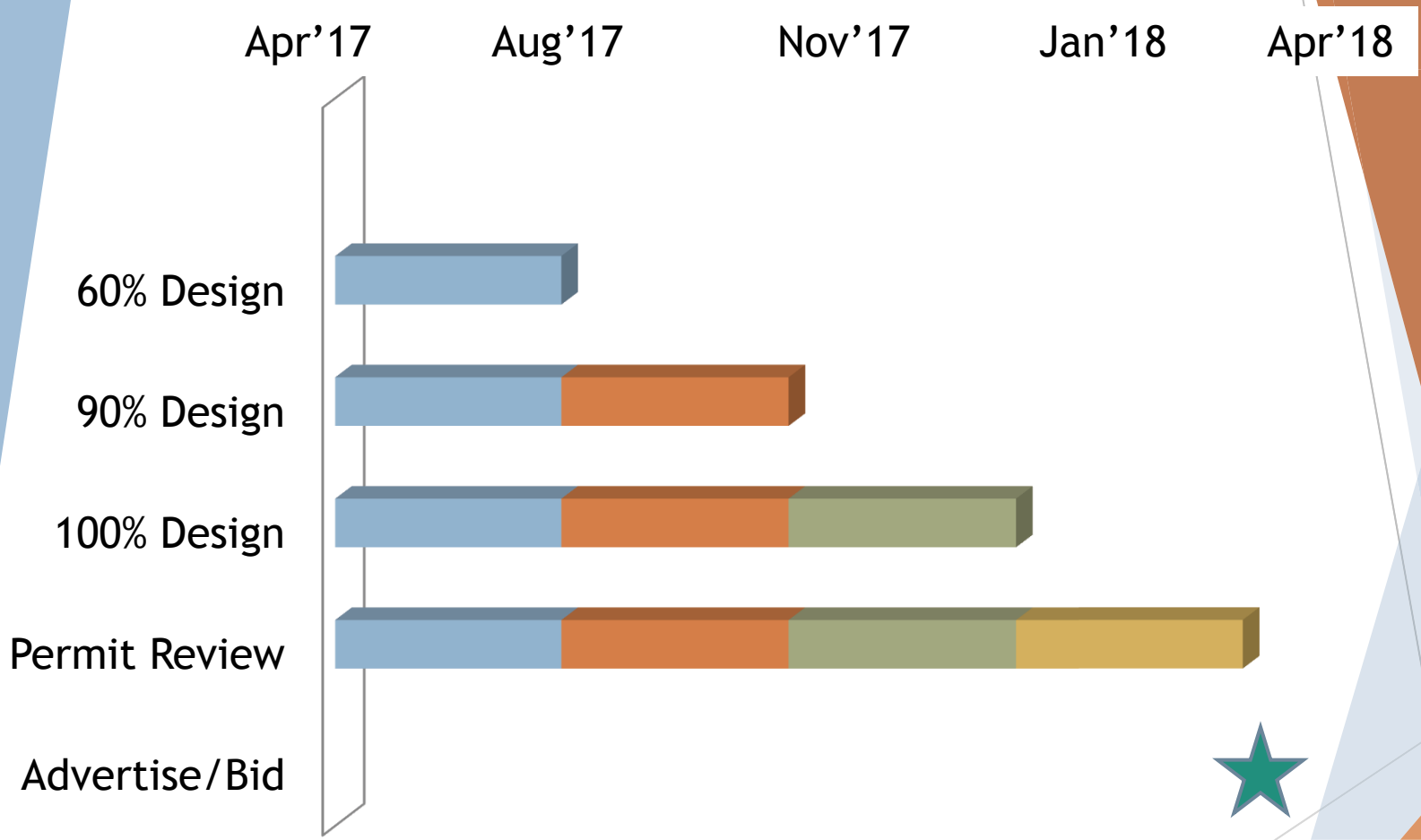
 DRAINAGE EASEMENT



NWCT Ph2 Trail



Design Schedule (Segments 1 & 2)



NWCT Ph2 Trail



History & Next Steps

- Feb 2013: Preliminary Alignment
- Aug 2014: Environmental Study complete. Clearance granted from BCCP
- Jun 2015: Collected Public Input
- Nov 2016: Mobility Bond 2016 - Construction Funding
- Apr 2017: Public Meeting and Project Status
- Spring 2018: Design Complete for Segments 1 & 2
- Fall 2018: Project Bid (Segment 1)
[Aside: Segment 2 construction dependent on Funding, Environmental, Hydraulic constraints, and coordination with TxDOT IH-35 bridge improvement plans]
- Fall 2019: Construction Complete (Segment 1 and possibly 2)



NWCT Ph2 Trail



Questions

▶ Project website:

<https://austintexas.gov/walnutcreektrail>

▶ Contact Information:

Jessica Salinas, Project Manager

(512) 974-7646

Jessica.Salinas@AustinTexas.gov

Janae Ryan, Urban Trails Program Manager

(512) 974-3159

Janae.Ryan@AustinTexas.gov



NWCT Ph2 Trail

