

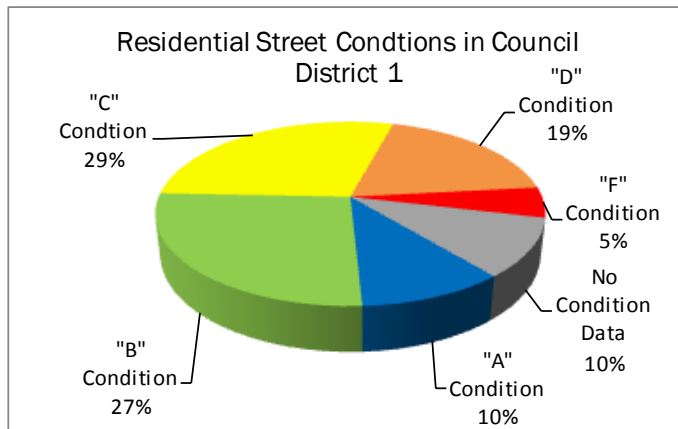
This profile summarizes the current conditions of streets, sidewalk network, urban trails, and Safe Routes to Schools program.



Public Works Department

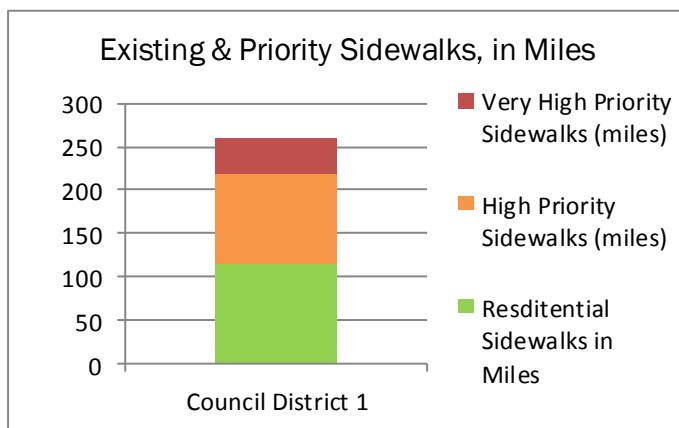
District 1 Profile

Photo: Southern Walnut Creek Urban Trail

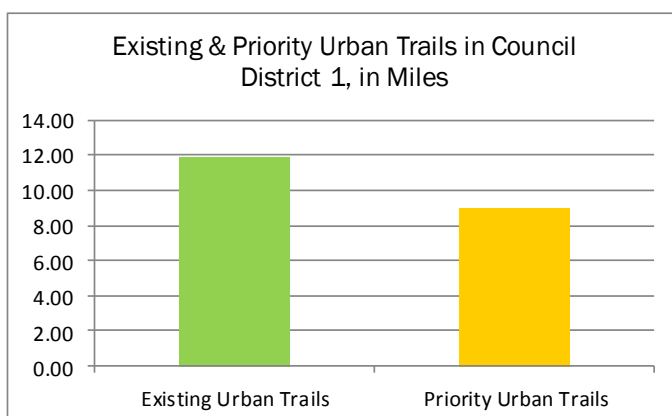


District 1 includes approximately 11% of all residential streets (402 lane miles) maintained by the Public Works Department. The category "No Condition Data" represents data anomalies from database transfers and data processing. These anomalies will be fully accounted for upon updating the Pavement Management Database.

The average number of residential sidewalks for all districts is 108 miles. District 1 includes 11% of the residential sidewalk network, or 114 miles. The Sidewalk Master Plan has identified 40 miles of Very High Priority sidewalk needs and 104 miles of High Priority sidewalk needs in District 1.



There are 31.3 miles of existing Urban Trails throughout Austin, and 12 of those miles are within District 1. The Urban Trails in District 1 include Southern Walnut Creek Trail, Austin to Manor Trail, and the US 290 Manor Expressway Trail. Priority urban trails identified by the Urban Trails Master Plan include Northern Walnut Creek Trail, Mogan Corridor, Boggy Creek, (CapMetro) Red Line Trail, and the completion of Austin to Manor Trail.



The Safe Routes to Schools program serves 13 schools in District 1. The Safe Routes to Schools program is reported by the location of the schools, and students may live in different districts or outside of the district boundaries.

Note that all numbers above, except the Safe Routes to Schools Program, are estimates produced by geo-spatial data processing and are to be used as guides only.

PWD Infrastructure Priorities
Council District 1



Street Condition

- "D" - Poor
- "F" - Failed

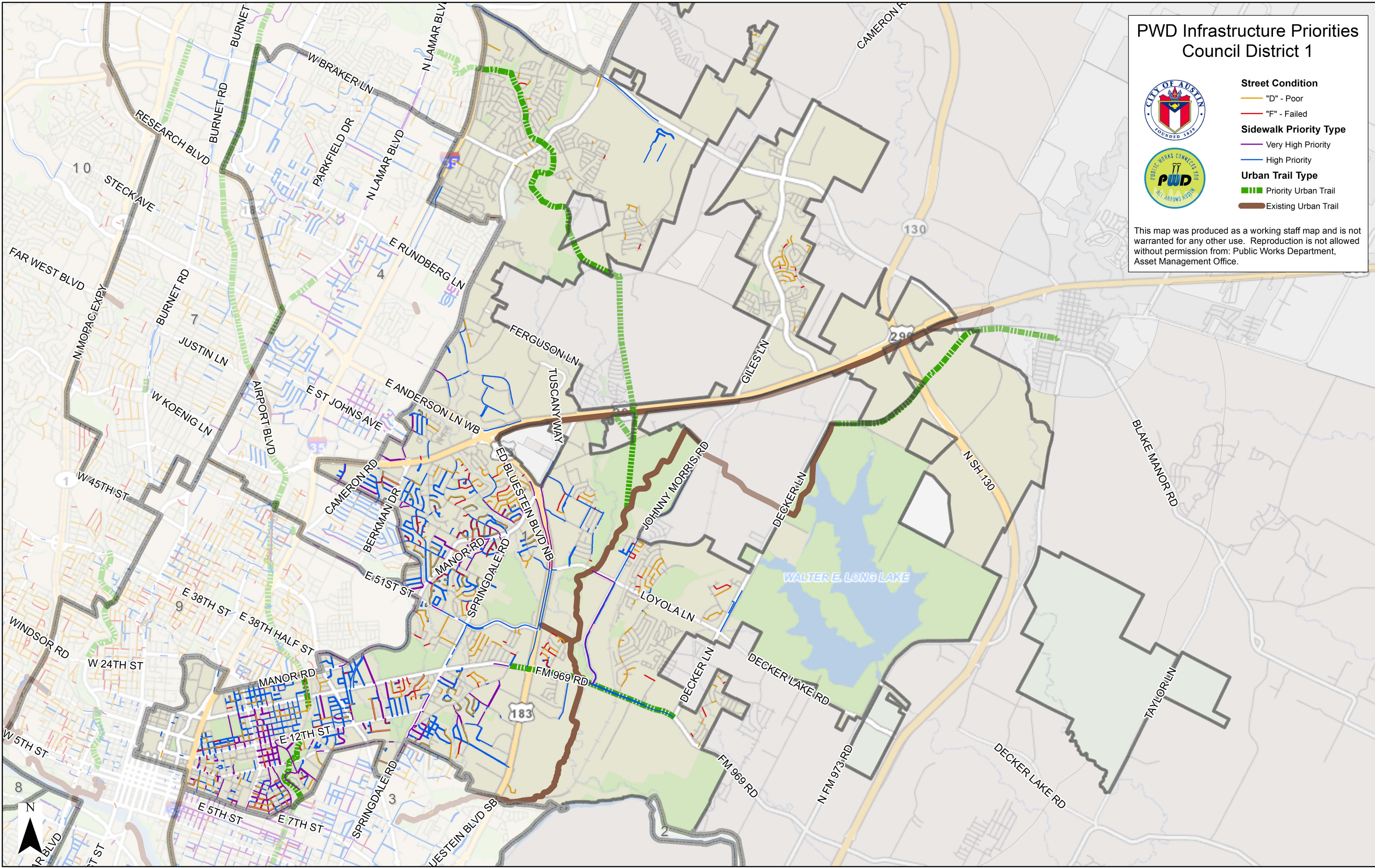
Sidewalk Priority Type

- Very High Priority
- High Priority

Urban Trail Type

- Priority Urban Trail
- Existing Urban Trail

This map was produced as a working staff map and is not warranted for any other use. Reproduction is not allowed without permission from: Public Works Department, Asset Management Office.

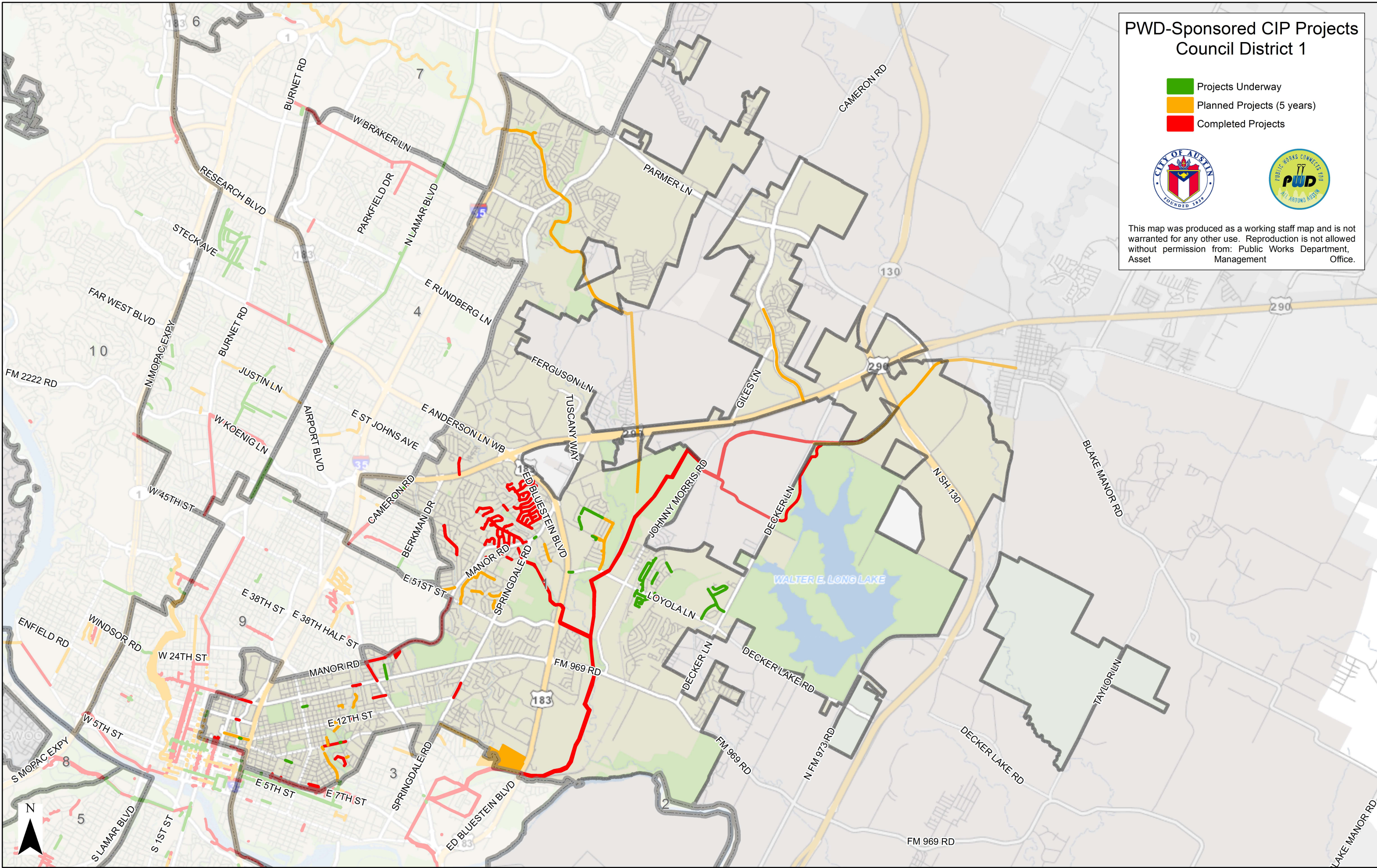


PWD-Sponsored CIP Projects
Council District 1

- Projects Underway
- Planned Projects (5 years)
- Completed Projects



This map was produced as a working staff map and is not warranted for any other use. Reproduction is not allowed without permission from: Public Works Department, Asset Management Office.



PWD Street Preventative Maintenance
Council District 1

- Street & Bridge Operations - 5 Year Service Plan
- Street & Bridge Operations - Fiscal Year 2014 Service Plan
- Street & Bridge Operations - Work Performed 2009-2013



This map was produced as a working staff map and is not warranted for any other use. Reproduction is not allowed without permission from: Public Works Department, Asset Management Office.

