

THE GROVE AT SHOAL CREEK

PUBLIC PARKS MASTER PLAN

FEBRUARY 2018

DRAFT

Prepared For: The Grove At Shoal Creek

In Collaboration with: Austin Parks & Recreation Department

Prepared By: Rialto Studio, Inc.

CONTENTS

- 4 EXECUTIVE SUMMARY
- 6 BACKGROUND
- 16 COMMUNITY ENGAGEMENT
- 18 VISION PLAN
- 24 MASTER PLAN
- 40 IMPLEMENTATION
- 44 APPENDIX

FIGURES

- Figure 2 -1: The Grove Context Map.....6
- Figure 2 -2: Site Analysis Exhibit.....9
- Figure 2 -3: Existing and Proposed Utilities Exhibit..... 10
- Figure 2 -4: EXHIBIT E Parks Plan from PUD Ordinance 12
- Figure 2 -5: EXHIBIT D Environmental Resources from PUD Ordinance..... 13
- Figure 2 -6: EXHIBIT D Environmental Resources from PUD Ordinance..... 14
- Figure 2 -7: Demographics within 2 mile radius..... 15
- Figure 4 -1: Vision Plan Areas..... 20
- Figure 5 -1: The Grove at Shoal Creek - Parks Master Plan 24
- Figure 5 -2: The Grove at Shoal Creek - Circulation Plan..... 25
- Figure 5 -3: The Grove at Shoal Creek - Master Plan Projects 26
- Figure 5 -4: The Grove at Shoal Creek - Core Infrastructure Projects..... 27
- Figure 5 -5: Project A - Gateway Park..... 28
- Figure 5 -6: Project B - Shoal Creek Trail Enhancements 29
- Figure 5 -7: Project C -Casual Play & Fitness..... 30
- Figure 5 -8: Project D - Great Lawns 31
- Figure 5 -9: Project D - Cul De Sac Alternative..... 32
- Figure 5 -10: Project E - Active Hub 33
- Figure 5 -11: Project F - Pond Enhancements..... 34
- Figure 5 -12: Project G - Natural Zone Enhancements 35
- Figure 5 -13: Project H - Passive Park South 36
- Figure 5 -14: Project I - Dog Park 37
- Figure 5 -15: Project J - Pocket Park Play Zone..... 38
- Figure 5 -16: Project K - Pocket Park Gardens 39
- Figure 6 -1: The Grove at Shoal - Phasing Plan 42

EXECUTIVE SUMMARY

4 |

The Public Parks Master Plan for The Grove at Shoal Creek is a document that was developed by the property owner in collaboration with the Parks and Recreation Department (PARD) with input from the community. The goal of this project was to develop a Master Plan for the public parks at The Grove at Shoal Creek (The Grove) including the 16.25-acre Signature Park and the Pocket Park in compliance with the City Parkland Improvement and Operations Agreement for The Grove at Shoal Creek Planned Unit Development (PUD).

The document is separated into the following sections:

Background

Provides an overview of the site and context, site analysis, and demographic information as well as information about the PUD Ordinance that governs both the overall site

Community Engagement

Provides a brief overview of the community engagement process that informed this plan, including both the community engagement that occurred prior to approval of the PUD and the three public meetings that were conducted as part of this planning process.

Vision Plan

Establishes three Vision Statements and 10 Underlying goals for this Master Plan, with specific strategies for implementing those goals, and lays out an overall Vision Plan for the project, which directly informs the Master Plan.

Master Plan

Lays out the overall Master Plan for the public parks at The Grove at Shoal Creek. This includes an overall Circulation Plan, Core Infrastructure, and 11 individual projects which collectively constitute the Master Plan for the parks.

Implementation

Establishes the Initial Phase of park improvements, which will fulfill the developer’s obligation to improve the parkland per the PUD, as well as future phases. Provides an estimate of long term maintenance costs.

Appendix

Contains meeting minutes and survey results from the public outreach process.

ROLES AND RESPONSIBILITIES

The following is a brief description of the roles and responsibilities, as determined by the City Parkland Improvement and Operations Agreement for the planning, design, construction, programming, and ongoing maintenance of the public parks at The Grove.

Property Owner (Arg/Property Owner’s Association)

Develop a Public Parks Master Plan in consultation with PARD and the community

Construct Improvements required in the PUD , which include the concrete Shoal Creek Trail (trail surface only), pond, pedestrian bridge, and \$750 per residential unit (approximately \$1 million) in additional improvements.

Publicly dedicate the public parks after required improvements are completed

Ongoing maintenance of the parks

Parks and Recreation Department (PARD)

Assist in facilitating the public outreach process

Collaborate with ARG and the community to develop the Public Parks Master Plan

Approval of the Public Parks Master Plan

Review and Approval of subsequent site plans

Permanent Ownership of Public Parklands

Management Committee

Includes representatives of PARD, ARG, The Property Owners Association, and the surrounding community

Approves Annual Management Plan for park maintenance

Approves Annual Programming Plan for programming and special events

This Page Left Blank Intentionally

BACKGROUND

EXISTING CONDITIONS

6 |

SITE INVENTORY

The Grove site is approximately 75 acres and is located in north-central Austin. It is bordered by Bull Creek Road on the west, residential uses to the north and south and Shoal Creek on the east. Existing established neighborhoods around the site include: Allandale and Shoalmont to the north, Rosedale to the east, Ridgelea and Oakmont Heights to the south and Westminster and the Post West Austin Apartments to the west.

Vehicular access into the site is from Bull Creek Road. MoPac Freeway is approximately one block west from the northwest corner of site and its closest major east-west connections are 45th and 35th Streets. There are existing CapMetro bus routes on Bull Creek Road with stops adjacent to the site. Additional access into the site includes existing bike lanes on Bull Creek Road and a proposed Shoal Creek Trail extension through the project site.



Figure 2 -1: The Grove Context Map

ENVIRONMENTAL RESOURCES

Topography on the west side of the property has a gentle slope falling west from Bull Creek Road towards the Shoal Creek on the east. There are several existing one-story buildings and associated parking lots on site that were used by the Texas Department of Transportation (TxDot). The Pocket Park will be located in this portion of the site. The east side of the property has slightly higher gradients and is dominated by a large grove of heritage oak trees and Shoal Creek. Roughly 3.5 acres of land along Shoal Creek are in the 100-year floodplain. The Signature Park will be located in the eastern portion of the site.

Habitats on Site

The habitats on-site have been largely influenced and developed through man-made impacts. While the natural habitats within the site were found to be in poor condition due to the number of invasive species and limited maintenance, this project has the opportunity to simultaneously increase their ecological function and enhance the users' experience. There are four major existing plant communities within the project site. They are: riparian edge, vernal wetland, upland prairie/meadow and herbaceous understory. The following is a short description of these plant communities.

- **Riparian Edge:** this plant community is focused around the edges of Shoal Creek on the eastern boundary of the property. The canopy species in this area are dominated by Cedar Elm, Mesquite and Live Oak trees, while the riverbank is primarily covered with invasive species such as Dallisgrass, Bermudagrass and Crabgrass, as well as aggressive native species such as Giant Ragweed and Western Ragweed. Due to major flow events the riverbank is exhibiting some significant erosion in certain areas.
- **Vernal Wetland:** this plant community is considered an existing critical environmental feature (CEF) and is near Shoal Creek. Due to the nature of these types of wetlands, this region is covered by shallow water for varying periods of time throughout the year depending on climate conditions, typically in the winter and spring.
- **Uplands Prairie/Meadow:** this plant community is intertwined with the Herbaceous Understory and can serve as a natural buffer between the formal park spaces and the natural riverbank while providing additional water filtration through the soil. It is characteristically dominated by a grassland community that includes both grasses and forb species. However the primary grassland species include invasive species such as Bermudagrass, Johnsongrass and Crabgrass. There are areas in which seasonal wildflowers currently grow.
- **Herbaceous Understory:** this plant community is entwined with the Uplands Prairie/Meadow plant community and is typically dominated by woody vegetation. The existing understory currently consists of brushy species and younger trees such as Poison ivy, Elbow Bush, Mesquite, Cedar Elm, Chinaberry Tree, Tree of Heaven and Giant Ragweed.



Existing Riparian Edge



Existing Vernal Wetland



Existing Uplands Prairie/Meadow



Existing Herbaceous Understory

Heritage Trees

There are two large groves of heritage oak trees on the site, a smaller live oak grove located in the Pocket Park and a larger grove located in the Signature Park consisting primarily of live oak with some cedar elms and other species present. Both groves represent outstanding natural resources for the parks and will provide shade, habitat, beauty, and character to the parks. The grove in the Signature Park is particularly exceptional, including a 78" live oak and many other extraordinary specimens. The PUD agreement calls for additional protections for many of these trees, called the Signature Grove, requiring protection of the 3/4 critical root zone (CRZ) above and beyond the 1/2 CRZ protections required by City of Austin code. It is the intention of the Master Plan to protect and preserve these trees as both an outstanding natural resource and incredible amenity to the park.

Shoal Creek

Shoal Creek is a key feature of the Signature Park and provides both opportunities and limitations in how the site can be developed. The benefits include wildlife habitat, providing a corridor for both wildlife and human movement, exploration of natural beauty, and educational opportunities provided by the creek. Some of the key concerns that have been expressed around the creek are outlined below.

Bank Stabilization

The west bank of Shoal Creek at the north end of the site has experienced considerable erosion over time. If the bank continues to erode the slope will gradually lay back and reach an equilibrium where it will remain more stable. The Grow Zone and Critical Water Quality Zone paralleling the creek corridor are provided in order to allow the creek a natural space in which to find that equilibrium within its banks. While more structural bank stabilization efforts are theoretically possible and have been discussed with the city’s Watershed Department, it was concluded that the high cost of these improvements is not merited in this case. This is primarily because there are no structures at risk and the area that may erode is within a zone designed to allow the creek space to move.

Sediment Collection

There is some potential for sediment collection following storm events within the floodplain as well as in and around the pond. The pond is designed to receive a sediment load to prevent sediment from being conveyed further downstream, and will require occasional maintenance to remove collected sediment. Overall, the potential for sediment collection to considerably impact the park is minimal.

Flooding Potential

The Signature Park does include Shoal Creek and its floodplain. Both the 25 and 100-year floodplain are depicted on the Site Analysis Plan. Portions in the 25 year floodplain will flood regularly and even the 100-year floodplain has the potential to flood, so any improvements in these areas must be constructed in a manner that is resilient to the expected flooding. However, the site continues to slope up fairly quickly from the edge of the floodplain, so that flooding cannot expand into the more developed parts of the site. Additionally, the pond in the park will fill up during storm events and it’s 100-year water elevation will encompass some amenity areas of the site. The pond is designed to drain down quickly from this water surface elevation to return those areas to usability in a matter of hours or days. However, any improvements within that area must be designed to be resilient to occasional inundation.



Heritage Oak Grove in Pocket Park



Heritage Oak Grove in Signature Park

SITE ANALYSIS

The site analysis plan included here lays out the major physical elements that will influence development of the park, including the floodplain and critical water quality zone along Shoal Creek, an additional Riparian Grow Zone to protect riparian vegetation along the creek, The wetland CEF and associated buffer, Heritage and protected trees on the site, and the anticipated alignment of the Shoal Creek Trail.



Figure 2 -2: Site Analysis Exhibit

EXISTING AND PROPOSED UTILITIES

The only existing utilities on the site are the wastewater line running in the bottom of Shoal Creek and the Overhead Electric bordering the north edge of the Signature Park and the south edge of the Pocket Park along Bull Creek Road. There are also some utilities within the Pocket Park that serve the existing structures and will be removed.

New utilities proposed in the site include stormwater lines to the pond from the adjacent development and from the pond to the outfall into Shoal Creek, as well as a wastewater connection from the adjacent development to Shoal Creek. The anticipated easements for these utilities are depicted on the Existing and Proposed Utilities map below. There will also be electrical and water services to the park, the location of which will be determined at site plan. The utilities and easements depicted here are approximate and may change due to engineering constraints, additional requirements, or other factors.



Figure 2 -3: Existing and Proposed Utilities Exhibit

OPPORTUNITIES AND CONSTRAINTS

Based on the existing conditions outlined in the previous pages, there are a number of opportunities and constraints that have impacted the development of this Master Plan. The most important of these are outlined below

Key Opportunities:

- Existing Heritage Trees provide recreational, aesthetic, and habitat benefits to the park.
- Portions of the park along Shoal Creek provide outstanding natural diversity and interest and an ideal location to escape into nature.
- The wetland CEF provides diversity of plant communities and natural interest.
- The wet pond that must be constructed for the adjacent development provides unique recreational opportunities and a potential focal point for the Signature Park.
- Some existing vegetation, especially in riparian areas, is native and serving a key ecosystem function.
- The site is highly accessible for pedestrians and cyclists from both the new development adjacent and existing communities surrounding the site.
- The North Greenbelt provides a gateway to the Signature Park from the highly visible corner of 45th and Bull Creek Road.
- The pocket park has excellent visibility and is highly accessible from surrounding neighborhood, especially to the south.
- The park can both add to and access the regional Shoal Creek Trail network.

Key Constraints:

- Need to preserve Heritage Trees limits grading and hardscape construction in certain areas.
- Floodplains and buffers associated with Shoal Creek limit development in some areas.
- Areas immediately adjacent to the wet pond will be inundated during storm events and must be designed to resist damage due to inundation.
- Recreational opportunities are limited in the Wetland CEF and its buffer.
- Much of the existing vegetation is invasive.
- The signature park site has limited visibility from existing public ROW.

PUD ZONING REQUIREMENTS

PUD PARKLAND REQUIREMENTS

There are several sections within the planned unit development (PUD) zoning for the Grove that impact the planning and design for public parks at The Grove:

- PART 6. Open Space and Parkland
- PART 7. Environmental
- PART 13. Cultural and Historical Measures.
- Exhibit D. Environmental Resources Exhibit
- Exhibit E. Parks Plan and Parkland Improvement and Operations Agreement
- Exhibit G. Project Design Guidelines
- Exhibit H. Tree Disposition Plan

These sections layout general requirements for dedication and calculation of parkland, restrictions on development within the PUD, required improvements within the public parks, as well as long-term operations and maintenance requirements. For additional detail, refer to City of Austin Ordinance Number 20161215-075.



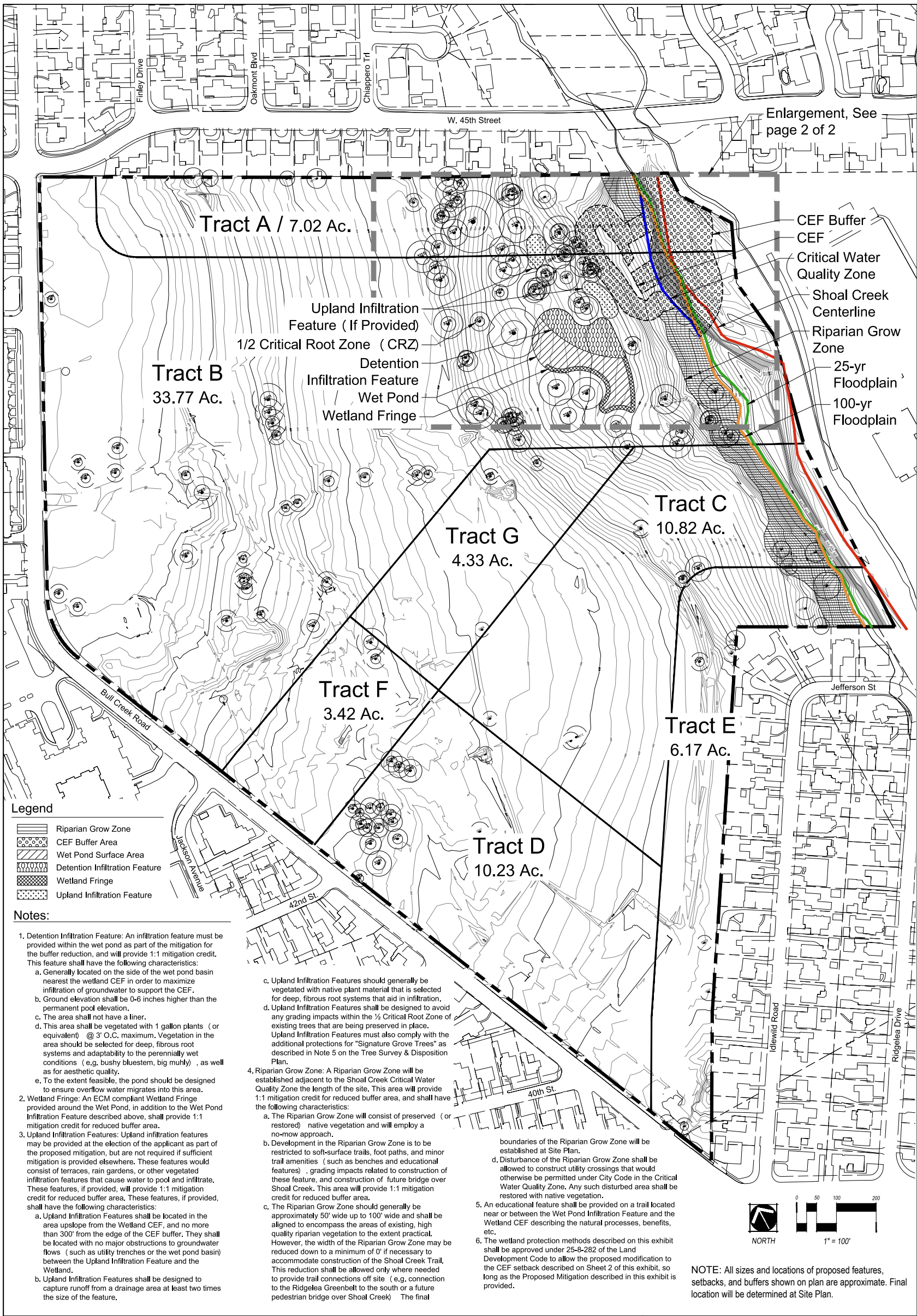


Figure 2 -5: EXHIBIT D Environmental Resources from PUD Ordinance

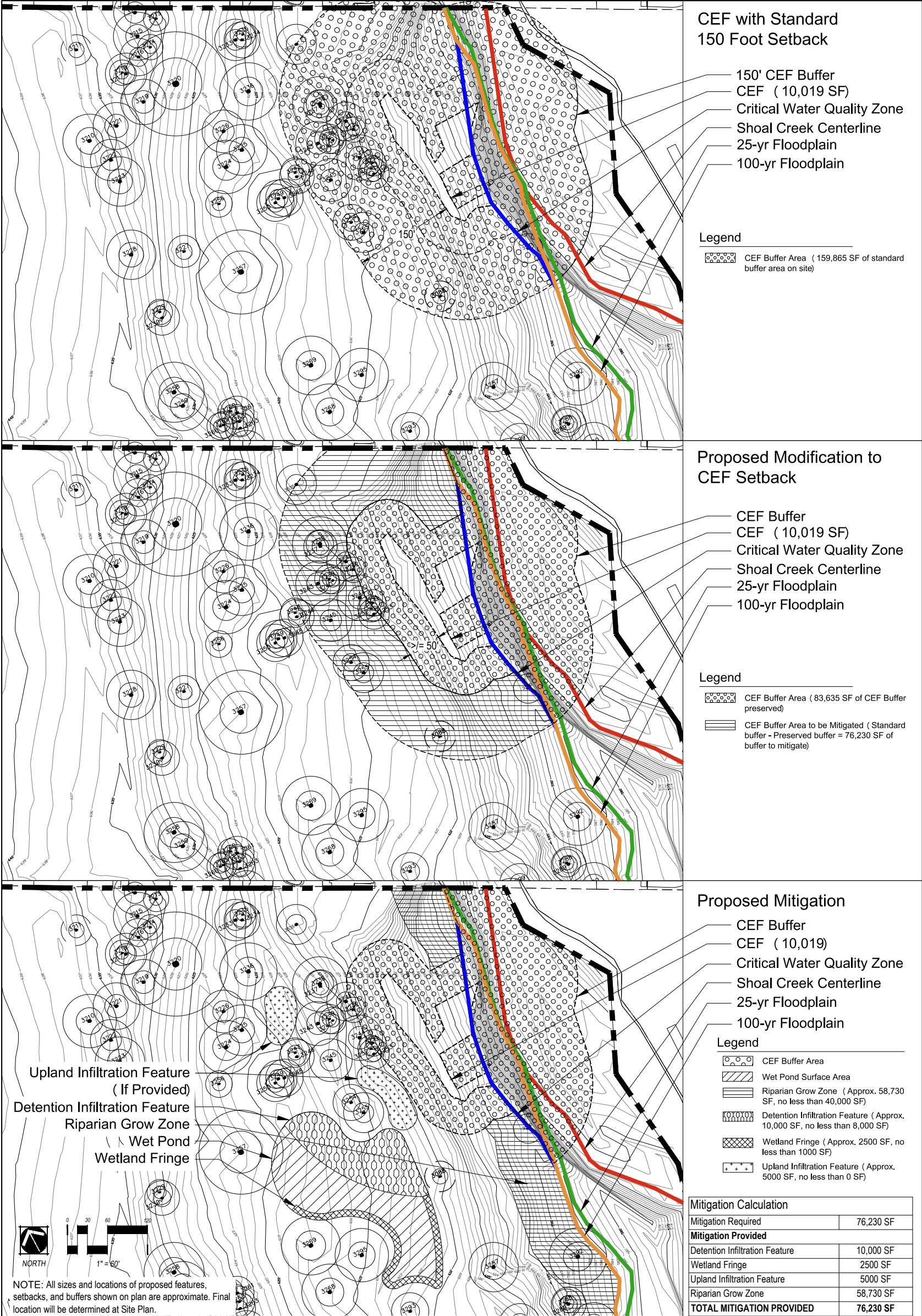


Figure 2 -6: EXHIBIT D Environmental Resources from PUD Ordinance

PLANNING CONTEXT

DEMOGRAPHIC MAKEUP

Austin In General

- 2017 estimated population is 949,587, at a density of 3,494 people per square mile
- 2.68% population growth from 2012-2016
- 11th largest city in the United States
- 3.3% job growth per annum
- \$57,689 median household income

POPULATION OF SURROUNDING ZIPCODES

78703, 78705, 78712, 78731, 78752

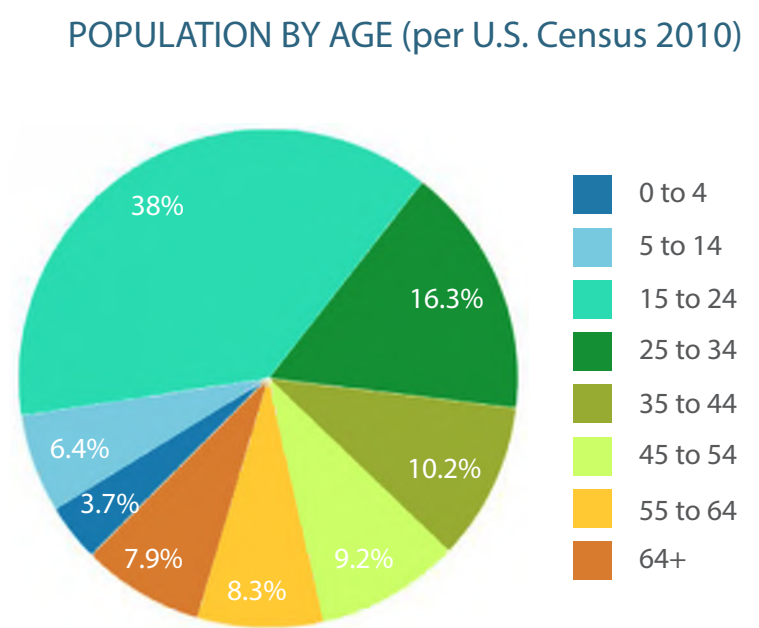
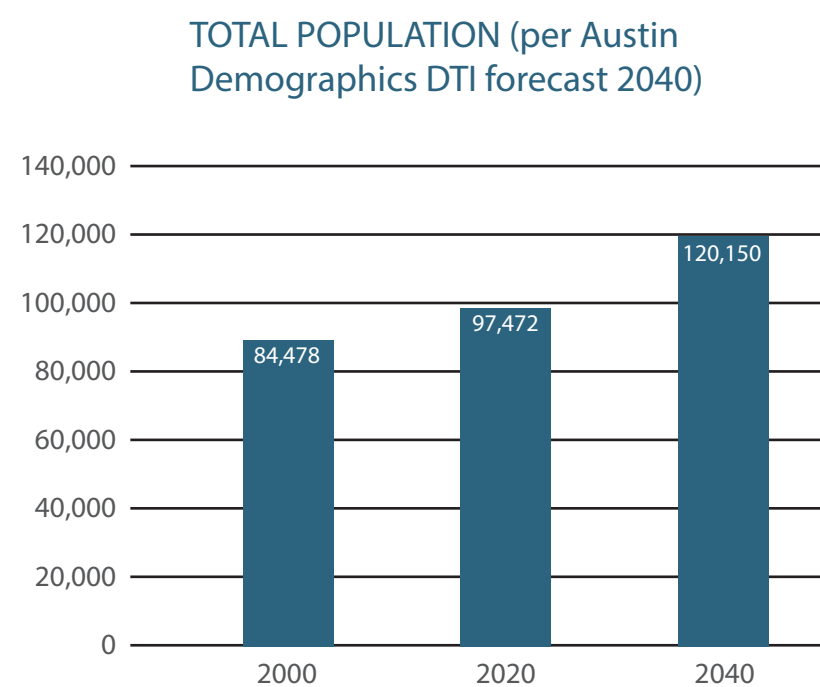


Figure 2-7: Population By Age and Total Population of Surrounding Zipcodes

CONCLUSIONS

- The population continuing to grow in this part of Austin, increasing by an estimated 42% from 2000 to 2040.
- All age groups are represented in the area, so the park system will need a wide range of amenities targeted at all ages.
- Only 10% of the population is under 15. This user group has a strong need for parks and playgrounds should be provided, but this is not the dominant demand for the park.
- 16% of the population is over 55. This indicates a strong need for passive recreation including trails, and seating areas.
- More than half of the population is between 15 and 24. Trails, active recreation, and social spaces are needed to serve this group.

COMMUNITY ENGAGEMENT

PREVIOUS PUBLIC PARTICIPATION INITIATIVES

16 |

In order for a project to be successful it needs to fit into the existing fabric of a community. The current land uses and population around a site can significantly alter the design and programming of a space. Because of this, soliciting feedback from community stakeholders has been a core component of the design for The Grove from the beginning. Prior to the initiation of the parks master planning process, The Grove project went through approximately two years of planning, public outreach, and public hearings during the zoning process. This process started in January of 2015 and ended with the approval of a PUD by the City Council in December of 2016. During this time there was constant public input, including a community visioning workshop, three master plan presentation meetings and multiple public hearing appearances at the City of Austin’s Parks Board, Environmental Commission, Bicycle Advisory Commission, Zoning and Platting Commission and City Council. Additionally there were over forty small scale meetings held with citizens groups, organizations and other various stakeholders. While most of these meetings focused on The Grove development in its entirety, the parks within the project were a core topic for many of these meetings. Additionally, the developer conducted three more targeted workshops focusing on bicycle infrastructure, housing, and, in December of 2015, a workshop was held focusing exclusively on the parks.

Surveys were conducted at many of the meetings to quantify community input. Surveys results from the initial Visioning Workshops conducted in January 2015 and the Parks Workshop conducted in December of 2015 are included in the appendix of this document and served as a starting point for the public outreach conducted as a part of this Master Planning Process.



Park Planning Workshop DECEMBER 2015



Bicycle Planning Workshop AUGUST 2015



Vision Meeting JANUARY 2015

MASTER PARKS PLAN PUBLIC ENGAGEMENT

Three public input meetings were held to solicit feedback from the community regarding the goals and programming priorities for the public parks at The Grove, to discuss a vision plan and design alternatives for those parks and to present the resulting Public Parks Master Plan. The resulting master plan is the result of that process and will be presented to the Parks Board for recommendation and to the Director of PARD for final approval. The following are summaries of the public input meetings. Detailed meeting summaries may be found in the Appendix of this document.

PUBLIC INPUT MEETING SUMMARIES

First Public Meeting

On March 21, 2017 the first of three public meetings for The Grove Public Park Master Plan was held at Bryker Woods Elementary. This meeting was focused on analyzing the existing conditions of the site, reviewing park precedents that could be used as inspiration for elements throughout the parks, and the stakeholders participating in a brainstorming workshop. The goal of the workshop was to identify the biggest needs and desires for the parks in The Grove. Stakeholders then categorized their needs and desires into three piles: Goals, Amenities, and Programs. The goals, amenities, and programs identified through this process were used to shape the Vision and Goals statement for the parks at The Grove.

Second Public Meeting

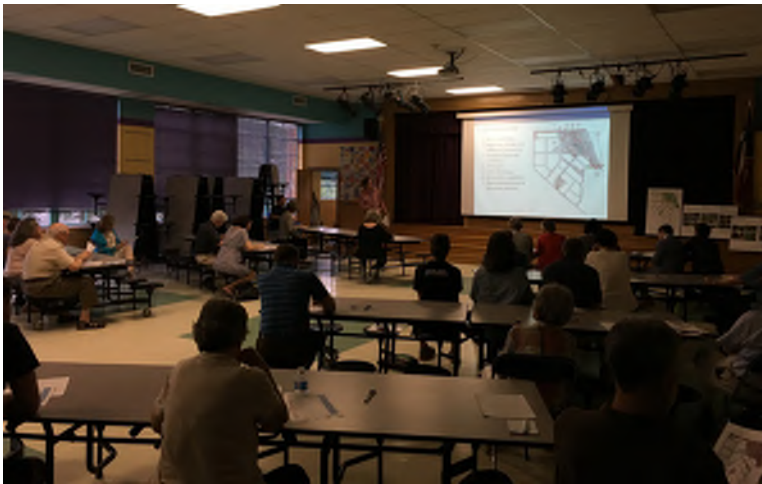
On April 24, 2017 the second of three public meetings for The Grove Public Park Master Plan was held at Bryker Woods Elementary. The second meeting began by discussing the results of Workshop 1 from the first public meeting; the discussion was followed by an initial review of the draft vision and goals statement compiled from the Workshop 1 feedback. Once the statements were reviewed participants were given a worksheet on which they could comment on the vision statement as well as comment on, add to and rank the goal statements. Next two alternatives, option A and option B, for the Vision and Park Plans including zones of intensity and program elements for each were presented to the stakeholders. Participants were referred back to the worksheet they were given earlier in the evening, and were encouraged to evaluate how well the alternatives fulfilled the goals. The contents of the worksheet were developed into an on-line poll for stakeholders who could not attend the meeting.

Third Public Meeting

On May 30, 2017 the third and final public meeting for The Grove Public Park Master Plan was held at Bryker Woods Elementary. The third meeting began by updating the stakeholders on the Workshop 2 results. A final draft of the vision and goal statements was presented to the stakeholders. Next a final Vision and Park Plan that depicted the long-term vision was presented. Stakeholders were given a worksheet on which they could read a description of the Core Infrastructure recommendations and the ten recommended projects broken out by geography. The worksheet included cost ranges as well. These costs were intended to inform participants of the relative scale of each project, which could impact final phasing of implementation. The worksheet asked participants to state high, medium or low priority for each project. The contents of the worksheet was developed into an on-line poll for stakeholders who could not attend the meeting. (Additionally, there was considerable input provided at this meeting encouraging the inclusion of a dog park in the Parks Master Plan. A dog park had been previously excluded due to spacial and environmental constraints, but some participants expressed a desire to see a dog park of any scale included in the project. For this reason, a dog park was added as an additional project option to the online survey.)



First Public Meeting MARCH 2017



Third Public Meeting MAY 2017



Third Public Meeting MAY 2017

VISION PLAN

OVERALL VISION

18 |

The Vision Plan for the Public Parks at The Grove at Shoal Creek begins with a series of three Vision Statements. Each of these statements consists of underlying Goals with supporting strategies for achieving those Goals. These Vision Statements and Goals were crafted based on input received in the first Public Meeting as well as input from the Parks Department, other City departments and the property owner. They were evolved and finalized based on public feedback at the Second Public Meeting.

This Vision is then developed into an overall Vision Plan for the parks, which broadly envisions 4 zones within the parks. These zones include the North Greenbelt and Pocket Park, as well as the Park Zone and Natural Zone, both within the Signature Park. Each of these zones speaks to specific elements of the goals and strategies laid out under the Vision Statement, and careful attention was paid during the planning process to properly balance the amount of the park dedicated to each of these zones to best reflect the overall Vision.

The Vision Plan is intended to inform the outcome of the Parks Master Plan, and the connection between the two is clear. The Vision Plan is also a useful reference point during implementation of the plan. While a Master Plan document can only achieve a certain level of specificity and must by necessity provide some flexibility, the Vision Plan can be utilized to ensure detailed design elements and choices made as the plan is implemented are true to the intent of the Master Plan.

A master plan is necessarily imprecise and significant changes are to be expected during detailed design and implementation. The Vision Plan provides a reference point of intent to ensure flexibility in implementation of the Master Plan.

Vision Statement 1 *A refuge from the urban environment anchored by majestic live oaks, diverse natural habitat, and Shoal Creek*

Goal 1: to preserve, protect and enhance the natural character and distinct natural features of the site

- Preserve heritage trees
- Provide a buffer for Shoal Creek’s riparian edge
- Minimize impacts on Shoal Creek’s erosion hazard zone
- Protect and buffer the site’s unique wetland
- Use vegetation that supports urban wildlife (i.e. birds, bees and butterflies)

Goal 2: to provide opportunities for exploration, escape, and connection with nature

- Provide a network of trails; large and small, hard and soft, throughout the site
- Welcome pets while protecting the environment and experience of other park users
- Create opportunities for children to interact with nature through play
- Welcome exploration of the site’s more natural areas
- Distribute passive uses throughout the site
- Design the wet pond to support wildlife and invite interaction

Goal 3 : to celebrate the site’s unique geology and ecology

- Design the wet pond to enhance and recharge the wetland
- Provide educational materials regarding the unique relationship between the wet pond, wetland, and creek
- Create creek overlooks and wildlife watching locations

Vision Statement 2

Active, vibrant parks that serve the needs of the surrounding neighborhood, new and old, and all Austinites

Goal 1: to provide opportunities for active recreation for all ages and abilities

- Create imaginative play environments for children of all ages
- Distribute multi-generational spaces across the site
- Encourage structured and unstructured fitness activities
- Provide walking loops
- Create wide, level open lawns for unstructured recreation where feasible
- Design spaces and signage to emphasize pedestrian and bicycle safety

Goal 2: to ensure infrastructure is sufficient to accommodate anticipated use

- Welcome and accommodate pets in the parks by integrating pet comfort stations
- Accommodate sufficient parking for off-site users
- Build trails and pathways to accommodate regular use and expected traffic
- Provide ample bicycle parking
- Provide ample waste collection and regular maintenance

Goal 3: to create a vibrant complimentary interface with the adjacent urban district

- Accommodate many active uses outside the public park area in the adjacent urban plaza
- Blur the lines between public and private realm to ensure that the adjacent plazas and streetscapes feel like an extension of the public park
- Encourage park-compatible uses on adjacent private land including restaurants, food stands, splash play features, public restrooms, farmer's markets, etc.

Goal 4: to develop programming and amenities that build community

- Accommodate events and community programs
- Provide places for small events and gatherings
- Create ample shaded seating and picnic areas
- Encourage community stewardship of site's natural resources

Vision Statement 3

Open spaces that integrate with the fabric of Shoal Creek and the surrounding neighborhoods

Goal 1: to build a critical link and destination in Austin's Shoal Creek Trail system

- Build the Shoal Creek Trail through the parks from Jefferson Street to the corner of 45th and Bull Creek
- Build a bridge across Shoal Creek and a connection to Shoal Creek Boulevard
- Develop nodes where key views can be appreciated

Goal 2: to create a place that feels open, welcoming and comfortable for all

- Provide identity, wayfinding, and interpretive signage in the park and along trail corridors
- Accommodate the existing and future pet owners that will use the park
- Ensure that at least 705' of public frontage exists along the park's edge
- Ensure the restaurant area adjacent to the park is designed to create an open, welcoming gateway from the adjacent plaza to the park
- Ensure site's amenities are accessible and accommodate users of all abilities
- Provide good visibility and lighting in more active areas of park
- Buffer surrounding residential areas from high activity areas

Goal 3: to celebrate the site's unique cultural history

- Develop features to inform the public and celebrate the unique history of the site
- Provide opportunities for public art

VISION PLAN

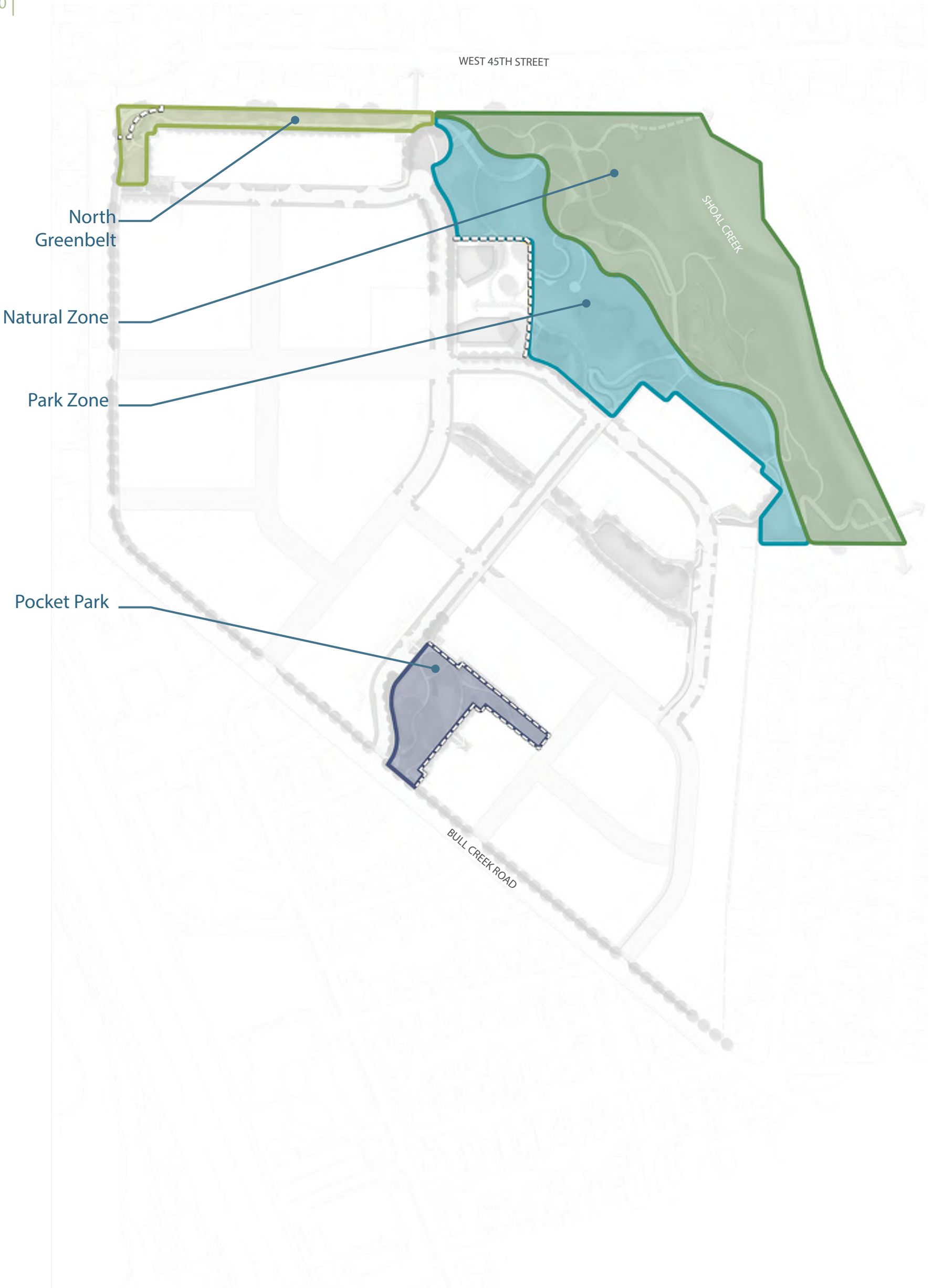


Figure 4-1: Vision Plan Areas

PARK ZONE

The Park Zone covers the more frequently used and amenitized portions of the park. It is composed of two sub-zones: the Active zone and the Passive Zone.

ACTIVE ZONE

The most developed and programmed part of the park, the active zone, comprises portions of the park zone located closest to the proposed mixed-use district. It may include pathways, spaces and amenities that extend across the boundary between the mixed-use district and the public park. This area will anticipate the greatest number of visitors and will thus have more paving, more reinforced and maintained landscapes, and ample seating, shade, and amenities. Heritage trees in this area should be protected with decks where appropriate to avoid excessive compaction of their root zones.

Typical Amenities

- Active creative playscape
- Splash pad
- Open plaza for farmers’ markets and community gatherings
- Games (ping pong, chess, bocce, etc.)
- Vending/restaurants (not permitted in public parkland)
- Public art
- Ample seating and shade
- Publicly accessible restrooms
- Bike parking
- Performance space/amphitheater
- Dog waste and watering stations

Typical Programming

- Farmer’s markets/Marketplaces
- Concerts and live performances
- Community festivals and parties



Active Zone Character Images

PASSIVE ZONE

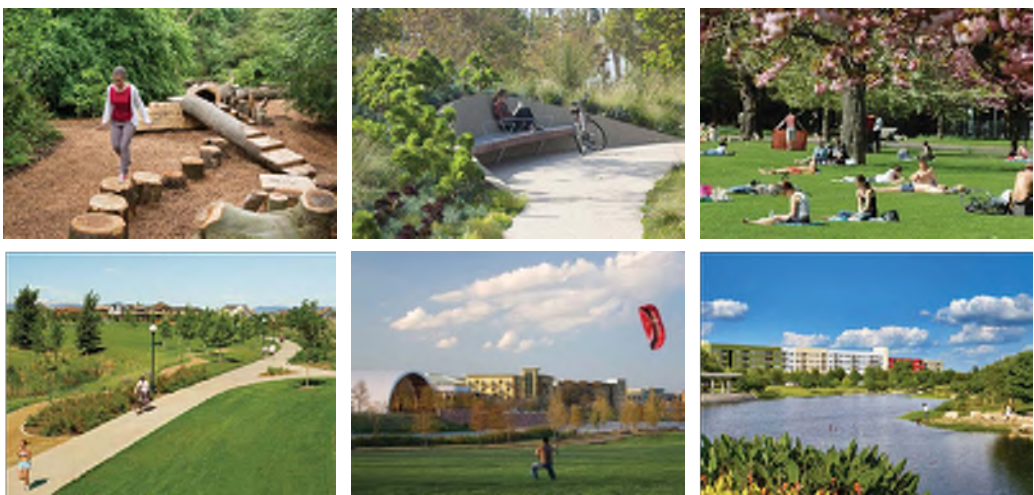
The passive zone will make up the majority of the park zone and will serve as a transition between the more heavily used active zone and the natural zone. This larger area will feature lower intensity amenities such as trails, picnic areas, and soft surface playgrounds. The key features of the passive zone are large areas of open, unprogrammed lawn for general play, relaxation, picnicking, gathering, etc. Shade is provided primarily by trees rather than hard structures and paving is primarily hard surface with soft surface possible in lower traffic areas.

Typical Amenities

- Open lawn
- Soft surface playground and/or natural play
- Trails and walking paths
- Shoal creek trail
- Pollinator garden
- Picnic and seating areas
- Natural landscape area
- Interactive wet pond
- Dog waste and watering stations
- Fitness equipment
- Event Lawn

Typical Programming

- Fitness and exercise groups and classes
- Movies in the park/lawn performances
- Small gatherings, birthday parties, etc.



Passive Zone Character Images

NATURAL ZONE

The natural zone will cover a large portion of the eastern part of the site and seeks to preserve and enhance the site’s unique natural character. This zone will feature preserved and restored natural landscapes with opportunities to watch, explore, and interpret the surrounding habitats. The natural zone will also provide protection and buffering for Shoal Creek and a wetland located on the site.

Typical Amenities

- Natural/restored landscape
- Wet pond and wetlands
- Shoal Creek Trail
- Walking Paths
- Creek overlooks and wildlife watching stations
- Soft surface where practical
- Nature play
- Educational features
- Picnic and seating areas
- Dog waste stations

Typical Programming

- Environmental education classes
- Community maintenance/restoration days



Natural Area Character Images

NORTH GREENBELT

The north Greenbelt serves as a critical gateway into the site’s park system, a front door for the Signature Park, and a buffer for the homes north of the site. It extends the presence of the Signature Park out to Bull Creek Road and provides a key link in the site’s trail network, while also offering small scale seating, lawns, and other passive amenities.

Typical Amenities

- Shoal Creek Trail
- Small open lawns
- Picnic and seating areas
- Project and park identity signage



North Greenbelt Character Images

POCKET PARK

The Pocket Park is an important recreational destination within The Grove. More easily accessible for many residents in and around The Grove, this will be a common daily destination for play, gathering, and relaxation. This park is also located near a retirement community and provides an excellent opportunity for multi-generational recreation and interaction. It's location along Bull Creek Road makes it a visible and fitting place to honor the site's unique history.

Typical Amenities

- Open Lawn family play area
- Walking paths and strolling garden
- Bike trails
- Picnic and seating areas
- Historical marker/educational feature
- Dog waste and watering stations

Typical Programming

- Small gatherings, birthday parties, etc.



Pocket Park Character Images

MASTER PLAN

MASTER PLAN DESCRIPTION

24 | The Master Plan includes both an overall circulation plan and series of 11 Master Plan Projects. The Master Plan Projects provide a detailed description of the core infrastructure and 11 individual and geographically determined projects, which collectively detail the desired improvements, amenities, programming, maintenance levels, and lighting levels in these distinct areas of the parks. These projects can be constructed individually or collectively and facilitate phasing of the overall park improvements. Collectively, the core infrastructure and 11 Master Plan Projects constitute the Public Parks Master Plan for The Grove.



Figure 5 -1: The Grove at Shoal Creek - Parks Master Plan

CIRCULATION PLAN

CIRCULATION

The circulation system that runs through The Grove’s parks consists of three different hierarchies, primary pathways, secondary pathways, and the Shoal Creek Trail.

There are a series of loops that have been identified as a result of how the circulation system was designed. A 1/2-mile accessible loop in the Signature Park provides a recreational loop for users of all ages and abilities. The 3/4 -mile loop provides a more diverse experience within the Signature Park, directing users across hard and soft surface trails and through all zones of the park. Finally, a potential 1 ¾- community loop is identified that would span between the parks and other trails planned for the larger community. The trails shown outside the Public Parkland are not intended to be controlled by this plan but are generally requirements of the PUD zoning and associated Design Guidelines.

The circulation system depicted in the Circulation Plan is not intended to be an exact representation of the final park circulation system. Many factors including grades, trees, significant existing vegetation, phasing, and final alignment of surrounding roads and buildings can impact the final layout, which will be determined at the time of detailed design.

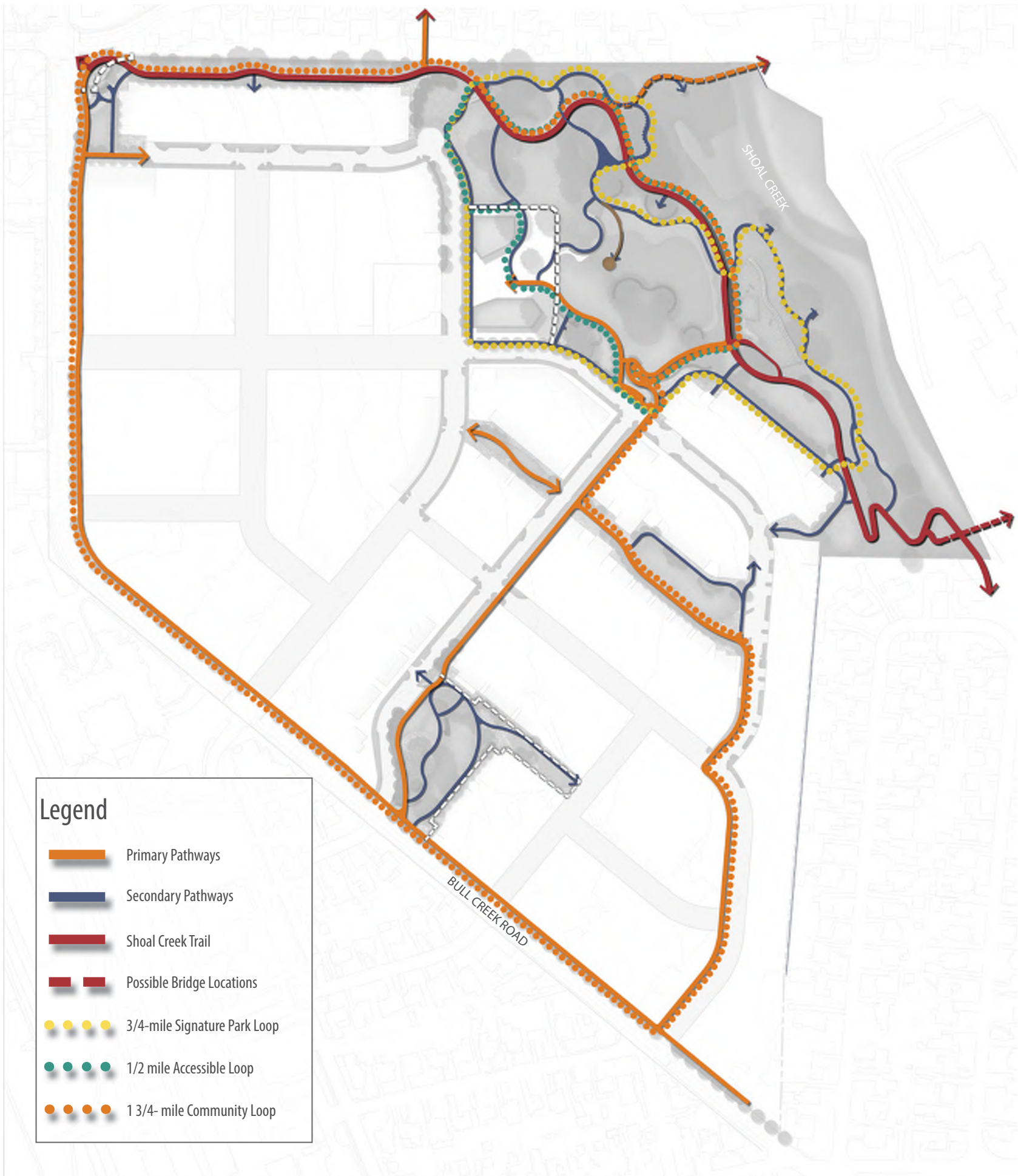


Figure 5 -2: The Grove at Shoal Creek - Circulation Plan

MASTER PLAN PROJECTS

The Grove Master Park Plan is broken into the following projects:

- Core Infrastructure Projects
 - Project A - Gateway Park
 - Project B - Shoal Creek Trail Enhancements
 - Project C - Casual Play and Fitness
 - Project D - Great Lawns
 - Project E - Active Hub
- Project F - Pond Enhancements
 - Project G - Natural Zone Enhancements
 - Project H - Passive Park South
 - Project I - Dog Park
 - Project J - Pocket Park Play Zone
 - Project K - Pocket Park Gardens



Figure 5 -3: The Grove at Shoal Creek - Master Plan Projects

CORE INFRASTRUCTURE

The Core Infrastructure is portions of the park system that must be built per the PUD and for the park to function at the most basic level. Items 1 and 2 below are required to be funded separately by the PUD and do not contribute to the cost estimates in this document. Items 3 and 4 are not explicitly required by the PUD but are considered essentials to the park regardless of what other amenities are provided. The cost of these items does contribute to the overall park budget.

- 1. Shoal Creek Trail, pedestrian bridge, Jefferson Street connection, perimeter sidewalks, and trees
- 2. Wet Pond
- 3. Buffer plantings and general re-vegetation
- 4. Waste receptacles, drinking fountains and dog waste stations



Figure 5-4: The Grove at Shoal Creek - Core Infrastructure Projects

PROJECT A - GATEWAY PARK



Figure 5 -5: Project A - Gateway Park

The corner pocket park serves as the front porch of the project. It should invite people in, while providing a great vantage for relaxing and watching the world pass by.

- Zone(s): North Greenbelt
- Primary Amenities:
 1. Park and signage/ interactive signage
 2. Welcome lawn with seating, approximately 0.25 acres
 3. Access to Shoal Creek Trail and Bull Creek Road Trail
 4. Community shelter (“Front Porch”) and herb garden
- Lighting: Moderate light level
- Maintenance Requirement: High

PROJECT B - SHOAL CREEK TRAIL ENHANCEMENTS

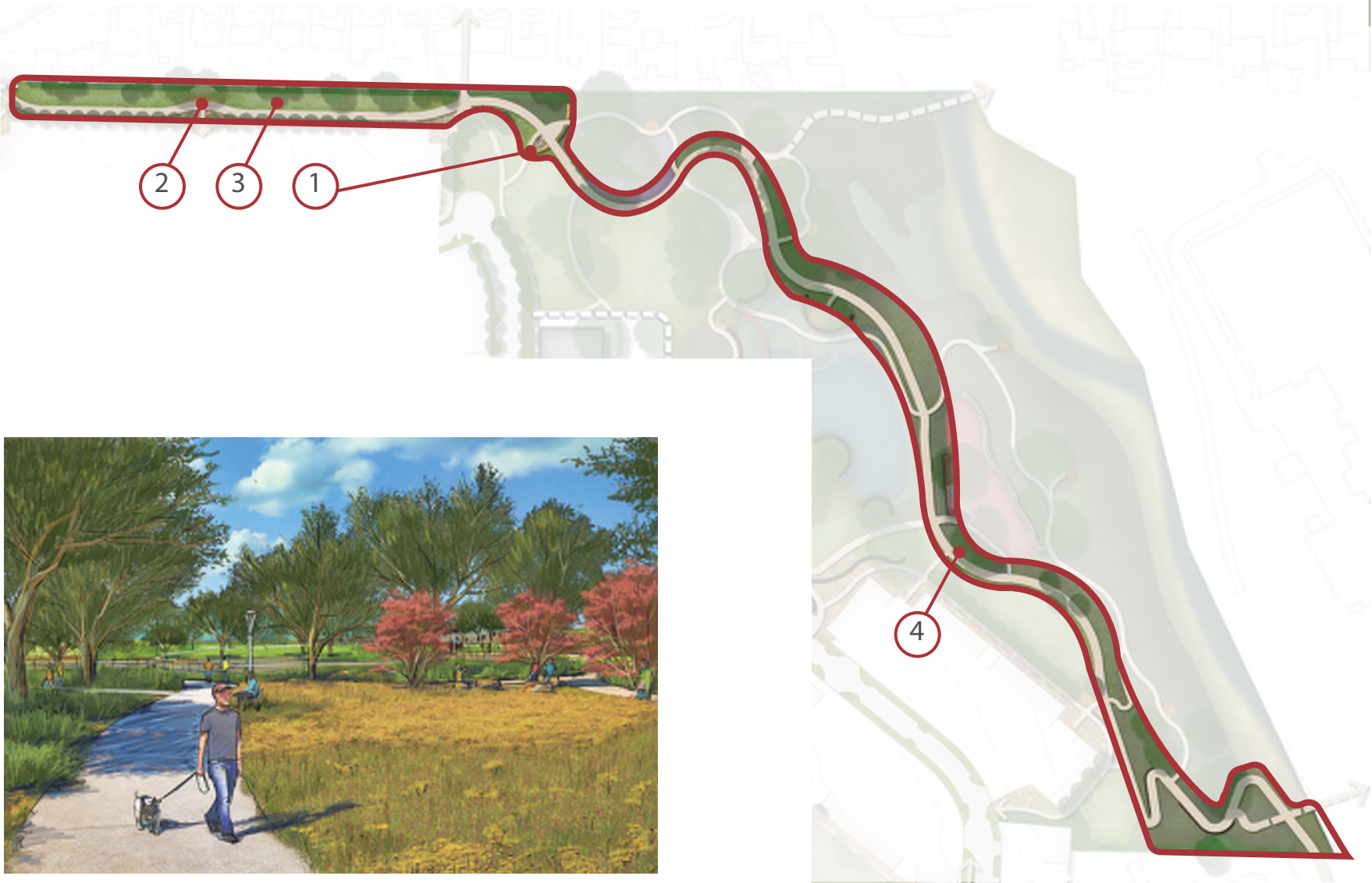


Figure 5 -6: Project B - Shoal Creek Trail Enhancements

The 12' concrete trail is a key part of the site's and City's pedestrian and bicycle infrastructure and should be designed as a complete park facility. The budget is for enhancement and improvements along the trail.

- Zone(s): North Greenbelt, Passive Zone, Natural Zone
- Primary Amenities:
 1. Signature park entry, directional and way finding signage
 2. Benches, waste receptacle, pet waste stations, hydration stations, bike repair stations
 3. Lawn and tree plantings in North Greenbelt
 4. Tree and restoration plantings in Natural Zone
- Lighting: Moderate in North Greenbelt and Passive Zone, low in Natural Zone
- Maintenance Requirement: Moderate

PROJECT C - CASUAL PLAY & FITNESS



Figure 5 -7: Project C -Casual Play & Fitness

The northern area of the Signature Park is characterized by low-impact play for all ages, including playgrounds, trails, and fitness equipment, woven into a majestic grove of trees.

- Zone(s): Passive Zone, Natural Zone
- Primary Amenities:
 1. Nature play area (approximately 3,000-5,000 SF)
 2. Walking trails and fitness loop (5-8 stations)
 3. Picnic and seating areas at regular intervals
- Programming: Fitness classes
- Lighting: Low light level
- Maintenance Requirement: Moderate

PROJECT D - GREAT LAWNS



Figure 5 -8: Project D - Great Lawns

The upper lawn is a flat, multi-purpose field for a wide range of activities. The larger central lawn is an area for relaxing in the grass, small informal gatherings, and playing catch with friends.

- Zone(s): Passive Zone
- Primary Amenities:
 1. Upper Lawn/Multi-purpose field, approximately 0.4 acres, may be reduced if cul-de-sac option is selected, see following page
 2. Lower lawn, gently sloping, approximately 0.7 acres
 3. Ring of paths and natural landscaping
 4. Formal and informal seating opportunities
 5. Low walls for tree preservation and leveling of lawns
 6. Cul-de-sac in adjacent ROW, see following page for alternate design in this area
- Programming: Community gatherings, fitness classes
- Lighting: Low light level





PROJECT D - CUL DE SAC ALTERNATIVE

32 | Alternate Design for Cul-de-sac Area:

Subject to approval by the Austin Transportation Department, Development Services Department, Fire Department and any other appropriate reviewing agency, this Master Plan encourages the shortening of the proposed cul-de-sac as shown in the exhibit below and the development of a license agreement to allow the ROW where the cul-de-sac is not developed to be utilized as parkland. The new cul-de-sac may be required to be constructed in part within the public parkland as shown below. If this alternate is not approved by all parties, then the cul-de-sac will be constructed as originally designed and depicted on the previous page. The design shown below is conceptual in nature and will be finalized in collaboration with City staff to meet engineering requirements.



Figure 5 -9: Project D - Cul De Sac Alternative

LEGEND	
	ROADWAY PAVING
	PARKLAND
	RIGHT-OF-WAY
	LAND IN ROW NOT USED FOR ROADWAY

PROJECT E - ACTIVE HUB

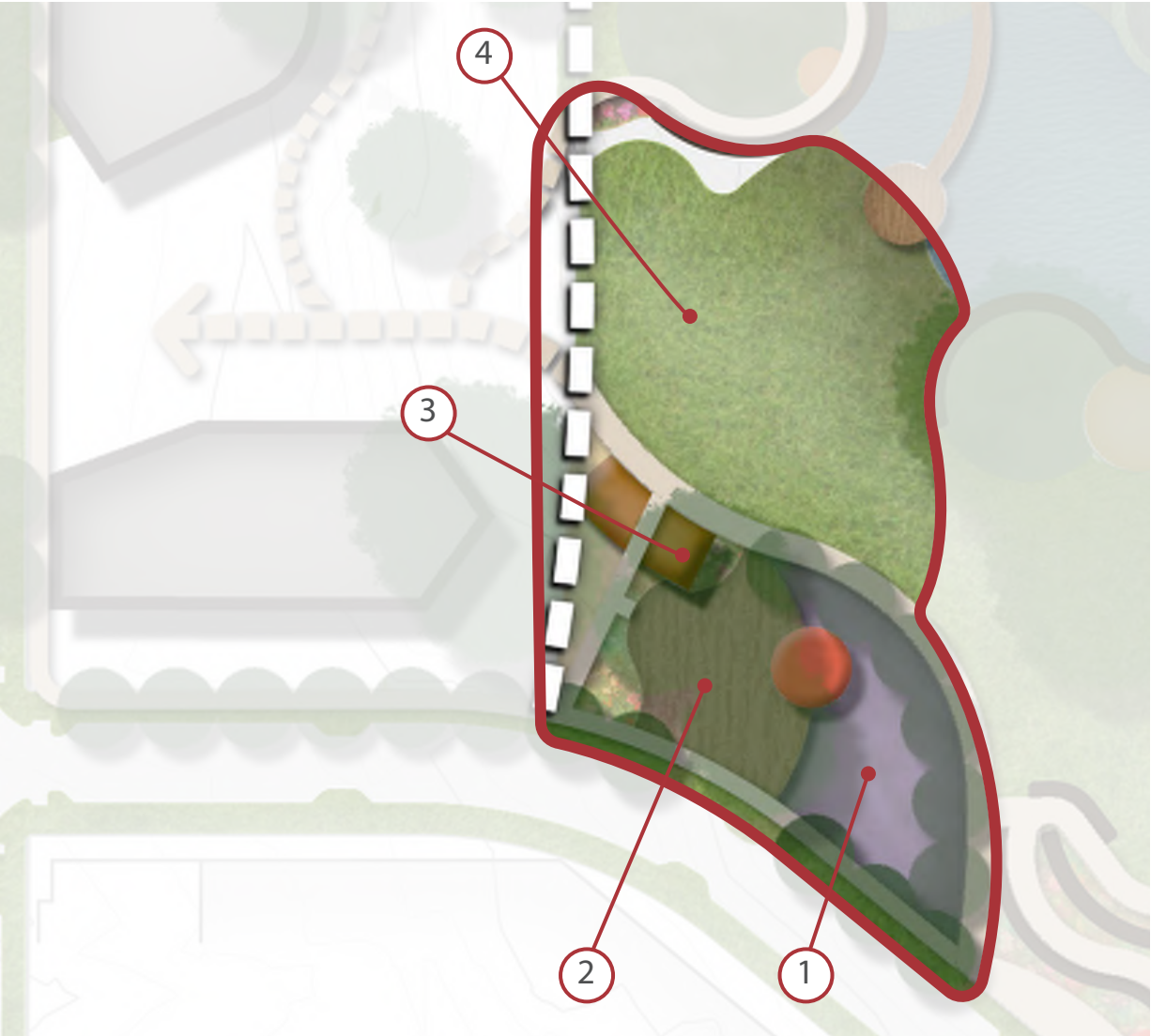


Figure 5-10: Project E - Activity Hub

This area is expected to be the most intensely used part of the park, with a destination adventure playground, a large community deck full of activity, and a shade pavilion overlooking an event lawn.

- Zone(s): Active Zone
- Primary Amenities:
 1. Adventure Playground and signature play feature, approximately 5,000- 8,000 SF
 2. Community deck with moveable furniture and game tables built around existing trees, approximately 2,000- 4,000 SF
 3. Pavilion/Shade structure overlooking lawn and play area, approximately 1,000- 3,000 SF
 4. Sloped event lawn down to pond, approximately 0.3 - 0.4 acres
- Programming: Movies in the park, live performances, community gatherings and socials, birthday parties
- Lighting: High light level
- Maintenance Requirement: High

Note: If phasing requires this area to be split into two phases, the first phase should include a portion of the adventure playground to provide some active play within the park in the first phase. This first phase would consist of a portion of Item 1 plus necessary pathways and vegetation for access. Items 2 through 4 may be delayed to a later phase.

PROJECT F - POND ENHANCEMENTS



Figure 5 -11: Project F - Pond Enhancements

- The natural zone is an escape from the surrounding city, an urban refuge. It also provides an important buffer for Shoal Creek and the site’s vernal wetland.
- Zone(s): Passive Zone, Natural Zone
 - Primary Amenities:
 1. Boardwalk
 2. Turf banks on west edge, natural riparian banks on east edge
 3. Picnic/Seating areas overlooking pond
 4. Terraced retaining walls to improve pond access
 5. Wetland and habitat restoration
 - Programming: Educational programming
 - Lighting: Low
 - Maintenance Requirement: High

PROJECT G - NATURAL ZONE ENHANCEMENTS



Figure 5-12: Project G - Natural Zone Enhancements

The natural zone is an escape from the surrounding city, an urban refuge. It also provides an important buffer for Shoal Creek and the site's vernal wetland.

- Zone(s): Natural Zone
- Primary Amenities:
 1. Soft surface trails with intermittent seating areas
 2. Overlook/wildlife watching stations along Shoal Creek
 3. Small outdoor classroom
- Programming: Educational programming, community prairie maintenance days
- Lighting: None except along Shoal Creek Trail
- Maintenance Requirement: Low

PROJECT H - PASSIVE PARK SOUTH



Figure 5 -13: Project H - Passive Park South

The southern area of the Signature Park is not as actively programmed, but provides ample unprogrammed lawn, paths, and gardens while also addressing some challenging grade transitions.

- Zone(s): Passive Zone
- Primary Amenities:
 - 1. Open lawns
 - 2. Pathways
- Programming: Educational programming
- Lighting: Low light level
- Maintenance Requirement: Moderate

PROJECT I - DOG PARK



Figure 5-14: Project I - Dog Park

The Dog Park will serve residents in The Grove and from surrounding neighborhoods. It will provide a safe and secure area for owners and their pets to run and play in an unleashed space, while still being surrounded by the natural elements that the site has to offer.

- Zone(s): Natural Zone
- Primary Amenities:
 1. Iconic sculptural element at entry/street terminus
 2. Terrace garden / Pollinator Garden
 3. Accessible pathway from street to Shoal Creek Trail
 4. Rain Garden along lower edge to intercept any water draining fro dog park
 5. Off-leash dog park, approximately .25-.35 acres
- Lighting: Moderate light level
- Maintenance Requirement: High

PROJECT J - POCKET PARK PLAY ZONE



Figure 5-15: Project J - Pocket Park Play Zone

The Pocket Park will provide a family play area convenient to the southern portion of the site and surrounding neighborhoods to the south. Shaded by live oaks and a large pavilion, this will be a daily destination for families in and around The Grove.

- Zone(s): Pocket Park
- Primary Amenities:
 1. Park gateway
 2. Playground, approx. 800-1500 SF
 3. Pavilion and seating area on edge of trees, approx. 300-600 SF
 4. Small Lawns
- Programming: Birthday parties
- Lighting: Moderate light level
- Maintenance Requirement: High

PROJECT K - POCKET PARK GARDENS



Figure 5-16: Project K - Pocket Park Gardens

This portion of the Pocket Park is characterized by shady gardens under existing oaks surrounded by open lawns and is populated with paths, small gathering spaces, and a historic marker or monument.

- Zone(s): Pocket Park
- Primary Amenities:
 1. Strolling garden around oak trees
 2. Large open lawn, approx. .5 acre
 3. Sidewalk and seating around park perimeter
 4. Art/Educational installation honoring site history
 5. Secondary lawn area
 6. Pathway access to south of site
- Lighting: Low light level
- Maintenance Requirement: Moderate

Note: Adjacent residential units are required to comply with Section 4.4.3 of the Grove at Shoal Creek Design Guidelines.

IMPLEMENTATION

INITIAL PHASE

40 |

Per Exhibit E, Note 11 or the PUD ordinance, “\$750 per residential unit shall be provided for parkland improvements.” In addition to that, construction of the concrete surface of the Shoal Creek Trail (trail only, not including lighting, furnishings, landscaping, or amenities) and the wet pond with associated amenities must be constructed and are not credited toward the \$750/unit. Together, these elements will constitute the Initial Phase of the project, construction of which will fulfill the developer’s obligations for park construction from the PUD.

A total of 1,548 market rate residential units would generate a maximum Initial Phase budget of \$1.1 million. However, in all likelihood, the final unit total will be somewhat less. For the purposes of phasing, this plan assumes an approximate budget of \$1.1 million for the Initial Phase. The actual final budget will be determined at site plan by the total number of units constructed. Regardless of the final cost of the improvements proposed in the Initial Phase, the developer is obligated to construct only the value of improvements outlined by the PUD (\$750/unit). In no way should the initial phase priorities outlined below be construed to modify that requirement, regardless of whether final construction costs are lower or higher than estimated here.

The Initial Phase was determined as follows:

1. Per Exhibit E, Section IV.D, The Shoal Creek Trail and Wet Pond must be constructed and are not counted toward the Initial Phase Budget. These are elements 1 and 2 of the Core Infrastructure project and are not reflected in the Approximate Cost table below as their cost does not impact the Initial Phase budget.
2. The remaining Core Infrastructure items must be constructed and are included in the costs below.
3. Per the same section, Project F: Pond Enhancements will be constructed and its cost does not contribute to the Initial Phase Budget.
4. Certain elements are required by Section IV.D of the Parkland Agreement, specifically active recreation equipment and an open lawn area. For this reason, Project D, The Great Lawns has been included in the Initial Phase, and a portion of Project E: The Active Hub has been included in order to install a first phase of the adventure playground (the remainder of Project E would be installed in Future Phases).
5. For the remaining budget, the highest community priority projects were selected. The top community priority was Project B: Shoal Creek Trail Enhancements.
6. After inclusion of the above, it is anticipated that there will still be remaining initial phase budget. Any budget that remains should be utilized to construct a portion of Project G: Natural Zone Enhancements, with priority given to the construction of a trail network throughout that zone. Any portion of Project G not constructed in the Initial Phase should be a priority for construction in Future Phases.

FUTURE PHASES

All improvements not included in the Initial Phase are included in Future Phases. These improvements may be constructed in whatever order or priority is desired by those who acquire or dedicate funding to their construction. The developer may elect to construct all or part of these improvements if desired, but is not obligated to do so.

ESTIMATED COST BY PHASE

Estimated costs for each project are provided below. Costs only reflect dollars that are credited toward the Initial Phase Budget and thus do not include the Shoal Creek Trail or the pond and associated amenities. These costs are approximate and may vary based on a number of factors. Actual final costs for any one Project may be significantly lower or higher than the costs estimated here.

Initial Phase	Approximate Cost
Core Infrastructure	\$90,000 - \$120,000
Project B - Shoal Creek Trail	\$280,000 - \$340,000
Project D - Great Lawns	\$260,000 - \$375,000
Project E - Active Hub (Phase 1)	\$180,000 - \$220,000
Project F - Pond Enhancements	\$0.00
Project G - Natural Zone Enhancements	Remainder of Initial Phase budget

Future Phases	Approximate Cost
Project A - Gateway Park	\$200,000 - \$300,000
Project C - Casual Play and Fitness	\$390,000 - \$560,000
Project E - Active Hub (Phase 2)	\$650,000 - \$750,000
Project G - Natural Zone Enhancements	\$0.00 - \$320,000
Project H - Passive Park South	\$200,000 - \$240,000
Project I - Dog Park	\$480,000 - \$540,000
Project J - Pocket Park Play Zone	\$190,000 - \$270,000
Project K - Pocket Park Gardens	\$230,000 - \$330,000

*budget for Phase 1 of Project G will be determined by total remaining after projects above are fulfilled, (total combined budget for Project G is approximately \$280-320,000).

Note: Inclusion of cost estimates in this plan is not a modification of the Parkland Agreement and does not expand the developer’s obligations thereunder. They are provided for information and planning purposes only. The developer’s obligation in the Parkland Agreement shall remain as set forth therein, notwithstanding any proposed improvements identified herein.

PHASING PLAN

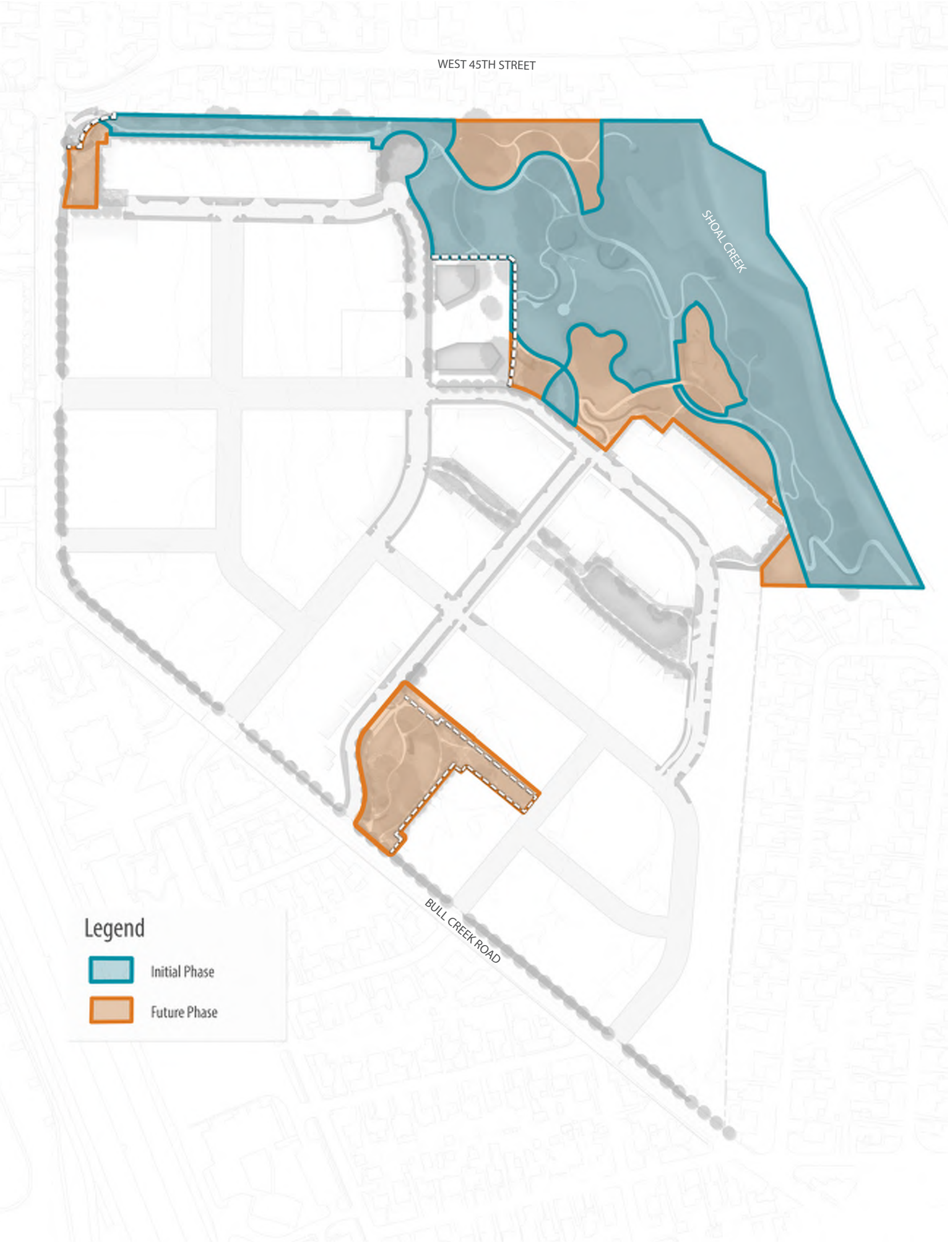


Figure 6 -1: The Grove at Shoal Creek - Phasing Plan

LONG TERM MAINTENANCE

Maintenance of the parks at The Grove at Shoal Creek is the responsibility of the Property Owners’ Association. Requirements for this maintenance are spelled out in Exhibit E, Section V of the PUD Ordinance. Approximate annual maintenance costs are estimated in the table below. Capitol replacement costs should be assumed to be the initial construction costs provided in this document plus inflation.

ITEM	SIGNATURE PARK AND NORTH GREENBELT	POCKET PARK	TOTAL ANNUAL COST
Landscape and Tree Maintenance	\$ 87,000.00	\$ 18,500.00	\$ 105,500.00
Irrigation Repair	\$ 8,00.00	\$ 1,800.00	\$ 9,800.00
Custodial Service and Supplies	\$ 48,000.00	\$ 9,000.00	\$ 57,000.00
Landscape Replacement and Decor	\$ 10,000.00	\$ 1,750.00	\$ 11,750.00
Pond Maintenance	\$ 10,200.00	\$ -	\$ 10,200.00
Electric Utilities	\$ 12,000.00	\$ 1,200.00	\$ 13,200.00
Water and Sewer Utilities	\$ 53,000.00	\$ 10,000.00	\$ 63,000.00
TOTAL	\$ 228,200.00	\$ 42,250.00	\$ 270,450.00

Note: Inclusion of cost estimates in this plan is not a modification of the Parkland Agreement and does not expand the developer’s obligations thereunder. They are provided for information and planning purposes only. The developer’s obligation in the Parkland Agreement shall remain as set forth therein, notwithstanding any proposed improvements identified herein.

APPENDIX

44 |

Meeting Summaries - Master Parks Plan Public Involvement Meetings 1, 2, and 3

Workshop 1: The Grove Public Parks Master Plan

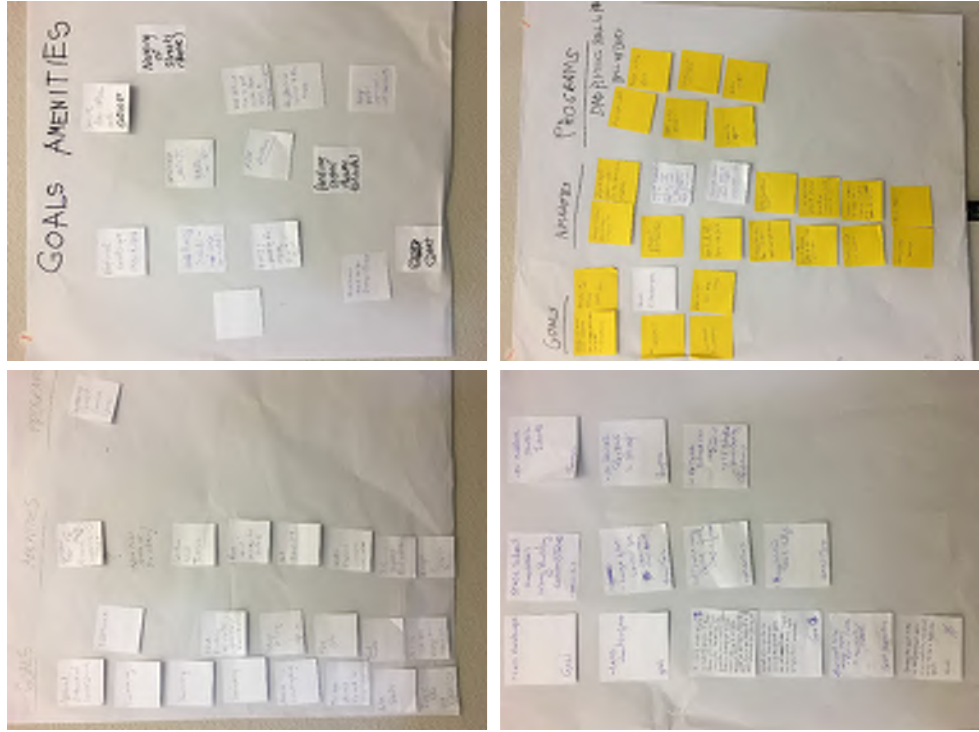
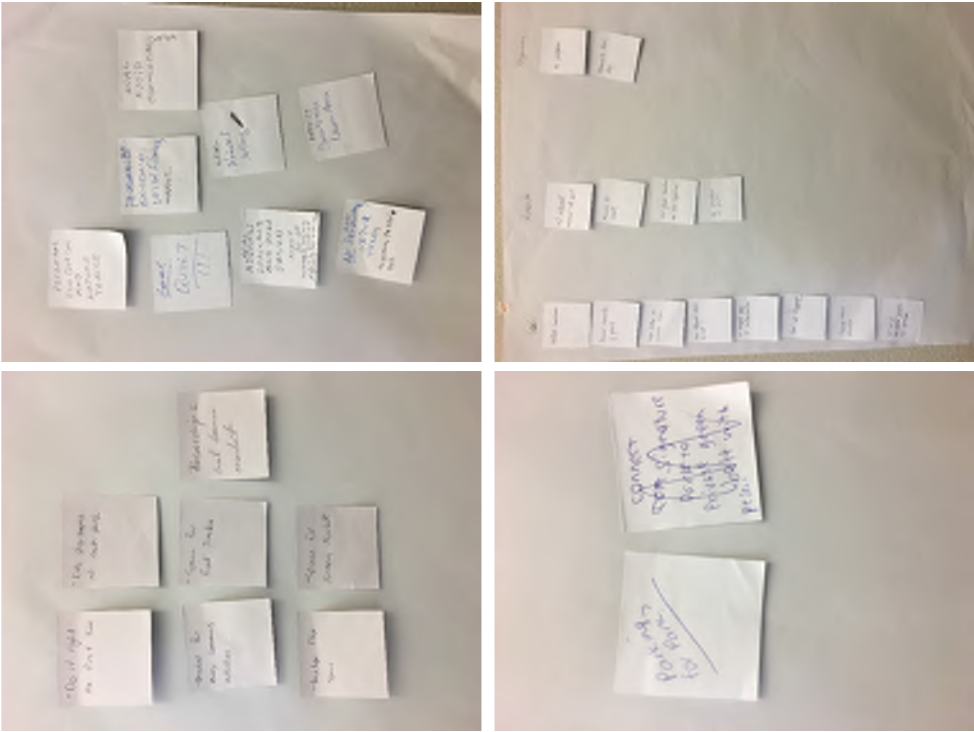
Meeting Summary

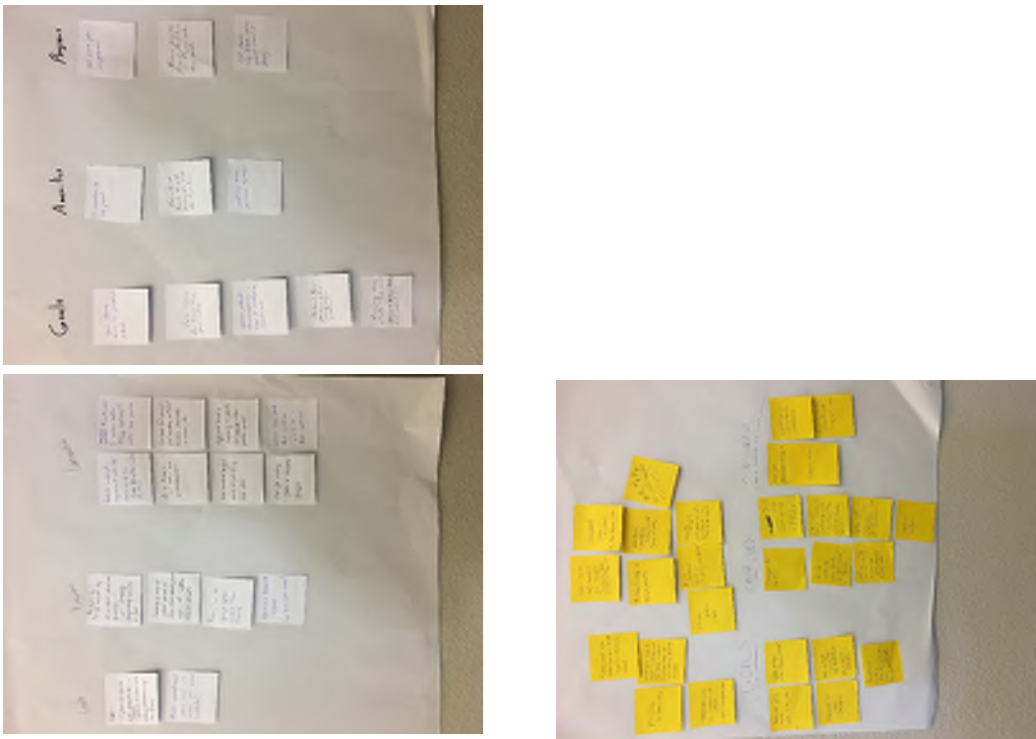
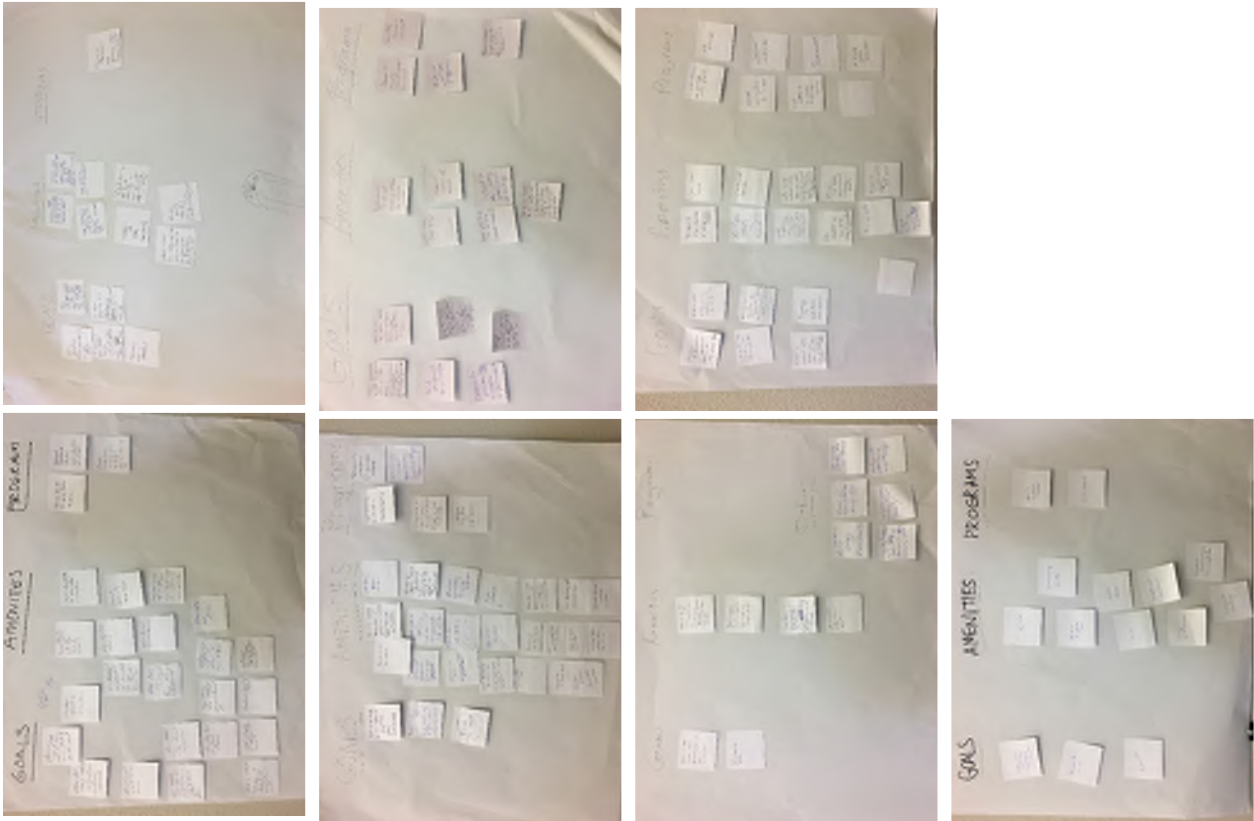
March 21, 2017

Introduction: Charles Mabry, PAR Marilyn Lamensdorf, PAR	Charles introduced the master planning process for the public parks within the Grove at Shoal Creek. Marilyn updated stakeholders on decisions made during the PUD process and what the roles and responsibilities of PAR and the developer would be moving forward.
Existing Conditions Review: Caitlin Admire	Caitlin updated stakeholders on site conditions that will have some influence on the outcomes of the master plan such as existing and planned edge conditions, drainage and heritage trees. Members of the public asked for clarification about the pond – what is its purpose, what is driving its size and shape and how does it relate to the overall watershed hydrologic dynamics? The size and design of the pond are determined by engineering considerations. The pond will provide water quality and detention for a large portion of The Grove property including the park and must be designed in compliance with the Environmental Criteria Manual and Drainage Criteria Manual of the City of Austin. Final design will be reviewed and approved by the Watershed Protection Department and will also be reviewed by a third party engineer per the PUD agreement.
Precedent Park Review: Rebecca Leonard, AIG Bull Creek	Rebecca reviewed a number of parks that could be used as inspiration for elements in the Signature Park. Members of the public suggested the designers find less urban parks that will more directly relate to the scale of the commercial around the park. The designers will bring more imagery of parks to the upcoming meetings.
Stakeholder Brainstorm: Rebecca Leonard, AIG Bull Creek	Rebecca had the stakeholders work in pairs or tables to identify the biggest needs and desires for the parks in The Grove. Members of the public asked for a summary of the information the designers collected at previous meetings for the PUD. PAR and the developer expressed that the previously collected information will be considered when developing the master plan, but there was a desire to provide the opportunity for newcomers to the process to have input. Survey results from both the original survey conducted in January of 2015 (regarding the entire development) and a subsequent survey conducted in December of 2015 (regarding the parks in particular) are attached here.
Brainstorm Organization/ Categorization: Rebecca Leonard, AIG Bull Creek	Rebecca asked the stakeholders to work together at their tables to categorize their sticky notes into three piles: Goals, Amenities, Program.

Report Back: Rebecca Leonard, AIG Bull Creek	Each table was given an opportunity to state their top goals, top amenities and top programs. A common goal that was heard throughout the evening was an emphasis on nature, whether that be retaining the natural landscape that can be found on this site, incorporating native trees and vegetation into the proposed plan, designing nature playscapes that blend with the existing surroundings, or creating nature and wildlife programs that community members can get involved in. There are various ways in which community members would like to retain the aesthetic qualities of the current site while still showing a desire for amenities and programs that lend to a park that will be inviting to all age groups of the surrounding community.		
	The following is a recap of the most common themes from the tables:		
	Goals:	Amenities:	Program:
	Keep more natural areas and less hardscape.	Natural, native planting areas	Farmers market
	Make this a quiet, natural escape for the users.	Soft trails and bicycle access	Environmental education classes (i.e. birding)
	Provide pedestrian access to the park and natural areas within.	Open lawn	Fitness classes
	Preserve natural landscape, particularly the trees.	Amenities for off-leash dog usage	Entertainment (music, movies and storytelling)
	Create opportunities for active and passive recreation	Wildlife habitat	
	Ensure a multi-generational park	Children's play areas	
Next Steps: Rebecca Leonard	Rebecca and Charles informed stakeholders about the schedule and next steps.		

Workshop 1: The Grove Public Parks Master Plan
Facilitated Table Brainstorms
March 21, 2017





Prior Stakeholder Input

2015 and 2016

Bull Creek Visioning Aggregate Survey Results
08.27.2015

This survey was conducted at two community workshops (January 21st and 28th, 2015) as well as being available online. 216 surveys were collected at the workshops and 488 were taken online, for a total of 704 surveys. The surveys received break down by neighborhood as follows:

75	Allandale
19	Brykerwoods
53	Highland Park West / Balcones
104	Oakmont Heights
90	Ridgelea
172	Rosedale
70	Westminster
121	Other

Station 1: Residential Character

To what extent are the following types of residential development appropriate for this site? This only refers to the developed areas and does not include future open space. Disregard architectural style and materials for this exercise.

Please rate each image on a 1 to 4 scale, based on the following criteria. The type of development shown is:

- 1. Not appropriate on the site in any situation.
- 2. Appropriate in Low Density areas of the site.
- 3. Appropriate in High Density areas of the site.
- 4. Appropriate in all areas of the site

Station 1: Residential Character

Image 1.1: Average Score = 2.6



Image 1.1

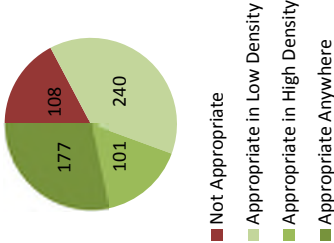


Image 1.2: Average Score = 2.5

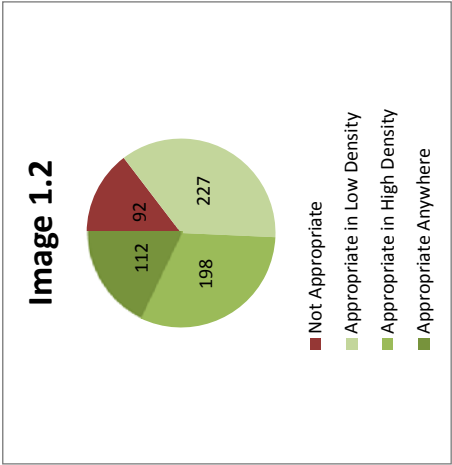


Image 1.3: Average Score = 2.3

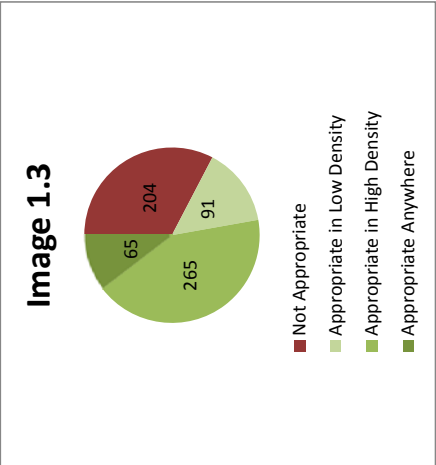


Image 1.4: Average Score = 2.1

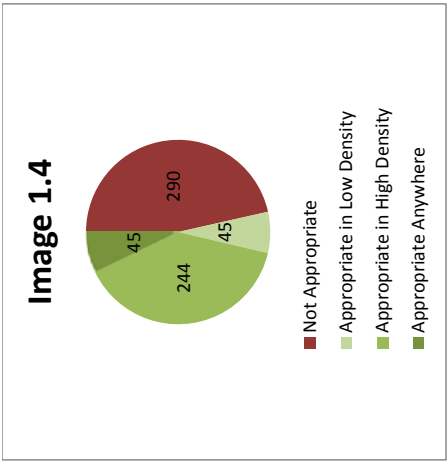


Image 1.5: Average Score = 1.8

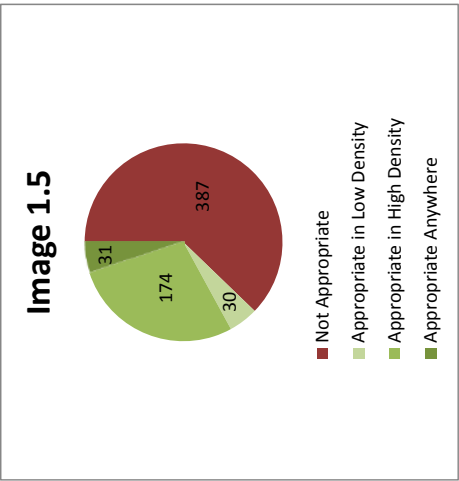


Image 1.6: Average Score = 1.3

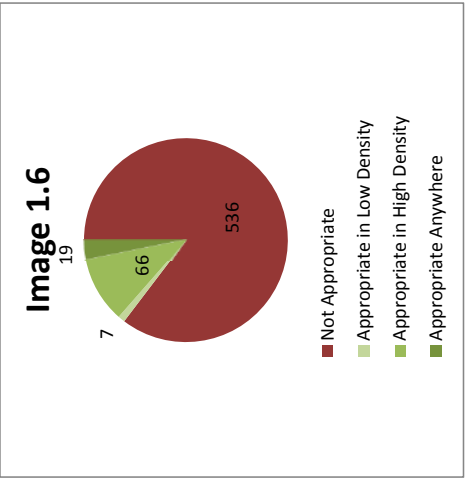
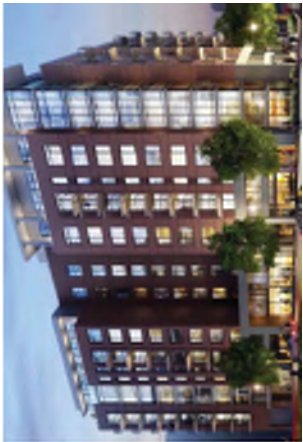


Image 1.7: Average Score = 2.7

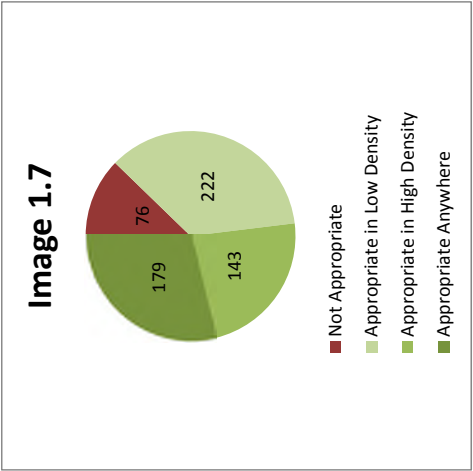


Image 1.8: Average Score = 2.4

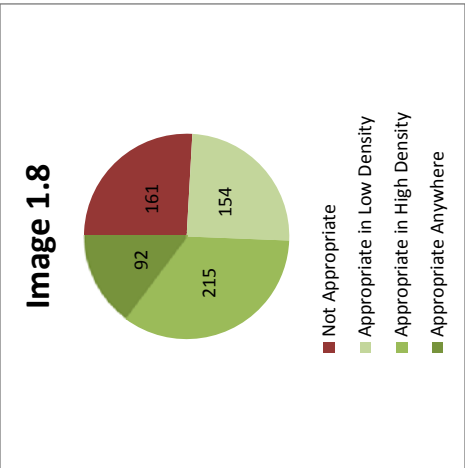


Image 1.9: Average Score = 1.9

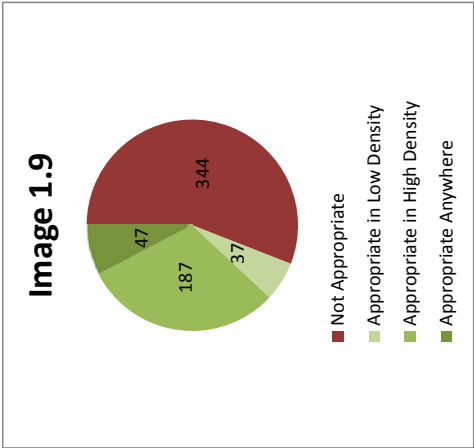


Image 1.10: Average Score = 1.5

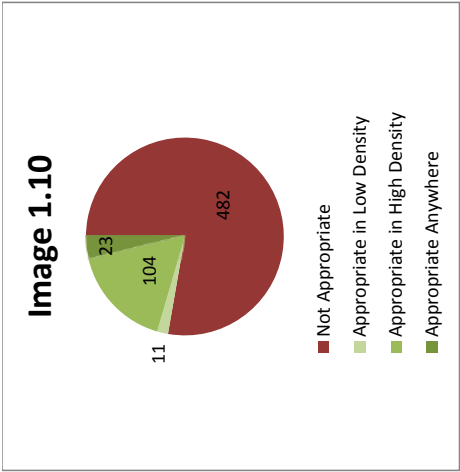


Image 1.12: Average Score = 2.1

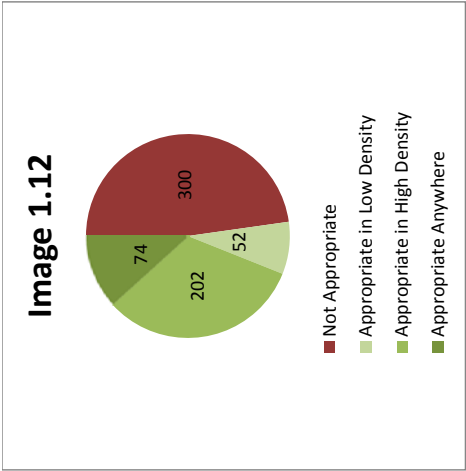
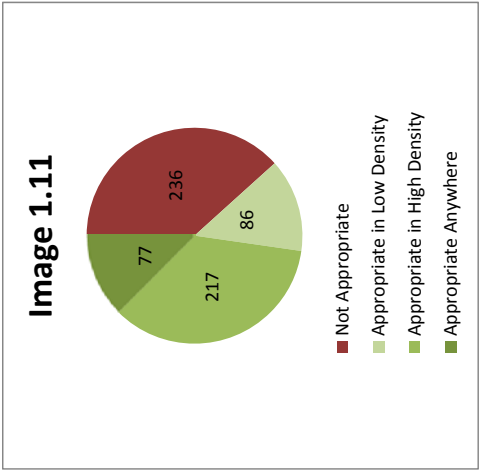


Image 1.11: Average Score = 2.2



Station 2: Commercial Character

To what extent are the following types of commercial development appropriate for this site? This only refers to the developed areas and does not include future open space. Disregard architectural style and materials for this exercise.

Please rate each image on a 1 to 4 scale, based on the following criteria. The type of development shown is:

- 1. Not appropriate on the site in any situation.
- 2. Appropriate in Low Density areas of the site.
- 3. Appropriate in High Density areas of the site.
- 4. Appropriate in all areas of the site.

Image 2.1: Average Score = 2.3



Image 2.1

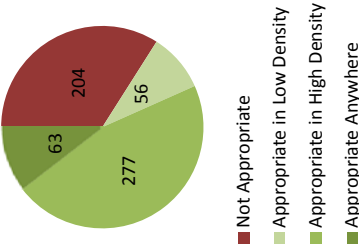


Image 2.2: Average Score = 1.4



Image 2.2

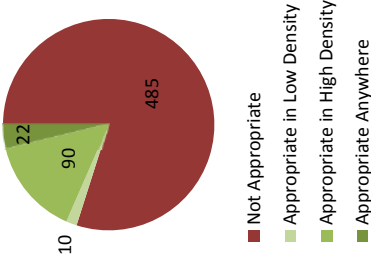


Image 2.3: Average Score = 1.7



Image 2.3

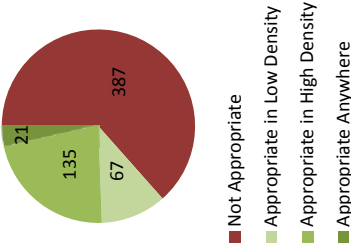


Image 2.4: Average Score = 1.2

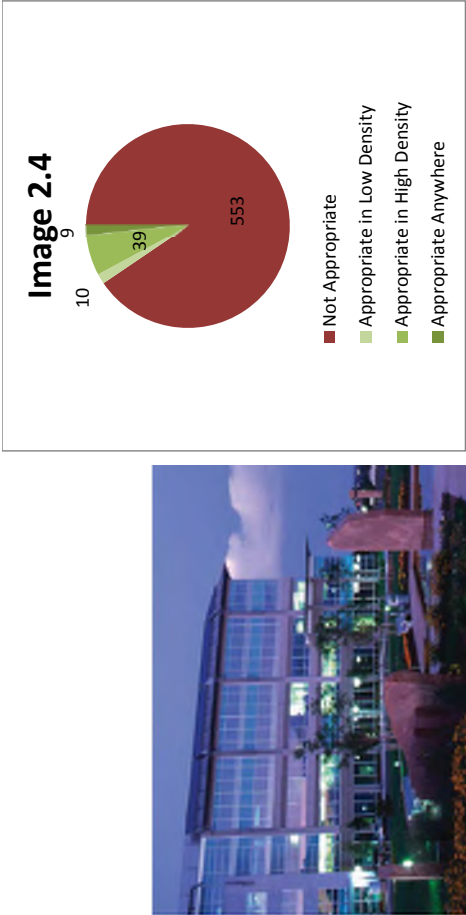


Image 2.5: Average Score = 2.3

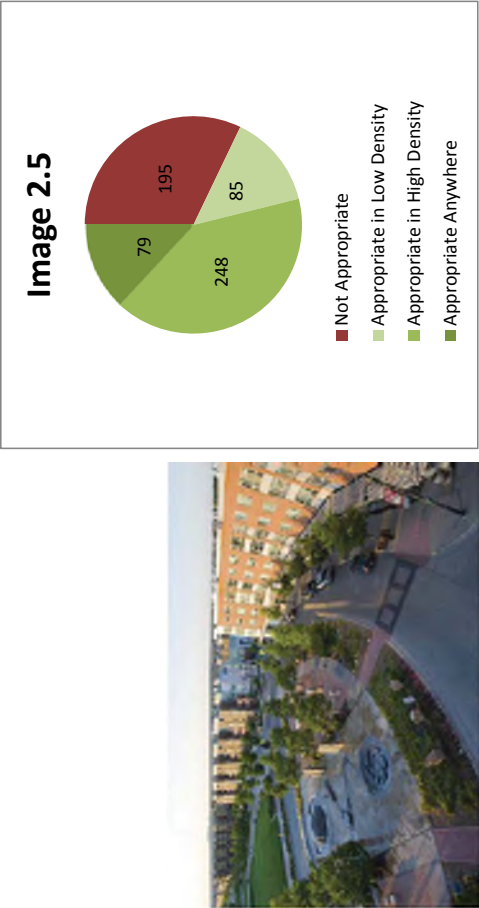


Image 2.6: Average Score = 1.4

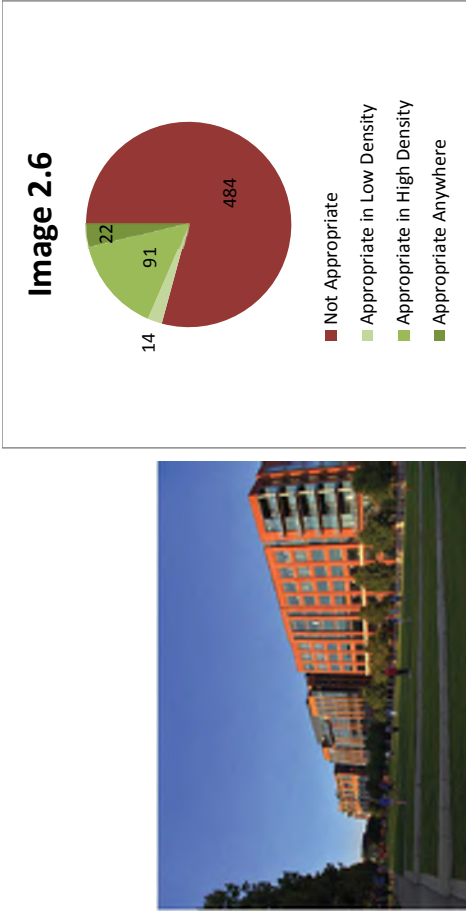


Image 2.7: Average Score = 2.9



Image 2.8: Average Score = 2.4

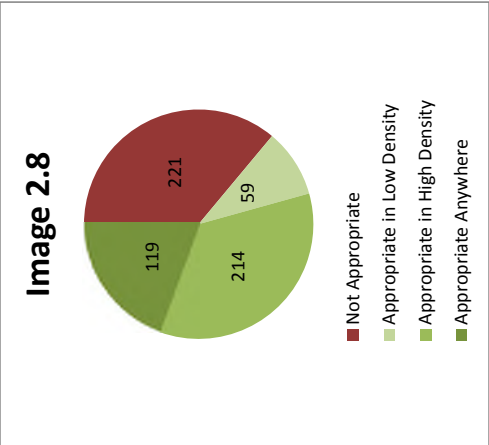


Image 2.9: Average Score = 1.5

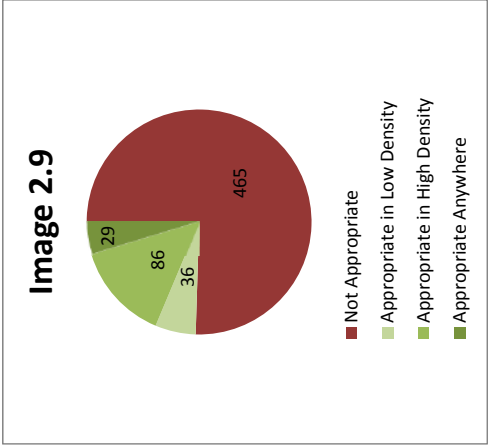


Image 2.10: Average Score = 1.9

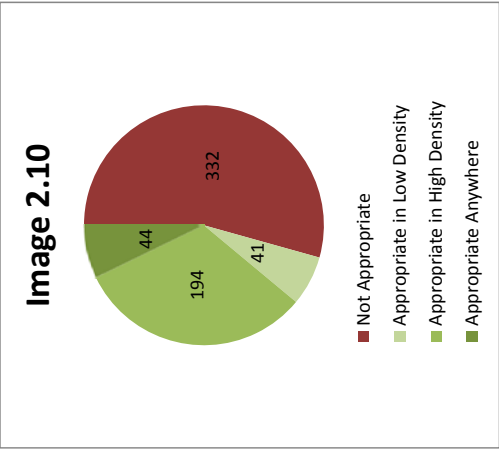
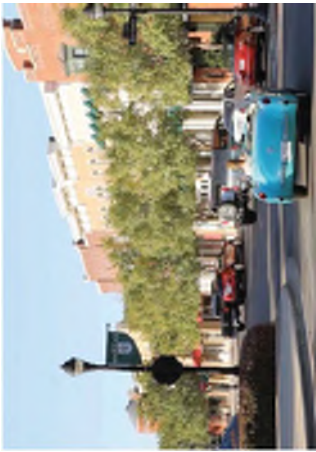


Image 2.11: Average Score = 2.7

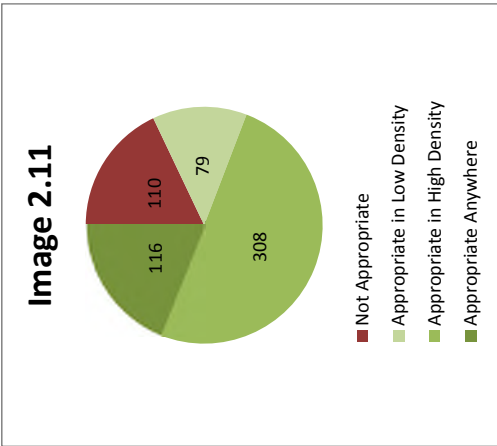


Image 2.12: Average Score = 2.9

Station 3: Open Space Character

The following images reflect various characters and types of open space that may be developed or preserved on the site. To what extent should each type of open space be represented on the site?

Please rate each image on a 1 to 4 scale, based on the following criteria. The type of open space shown:

- 1. Should not be present on the site.
- 2. Should be minimally present on the site.
- 3. Should be well represented on the site.
- 4. Should be the majority of open space on the site.

Image 3.1: Average Score = 3.2

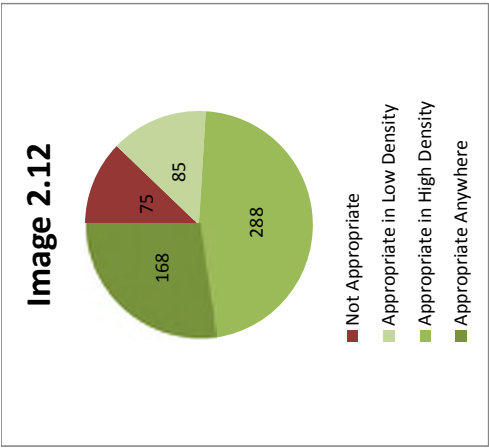
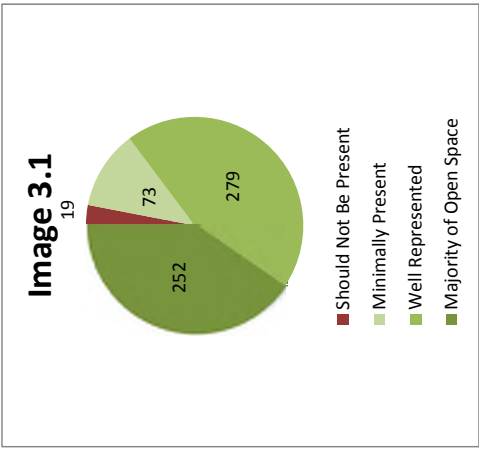


Image 3.2: Average Score = 2.9

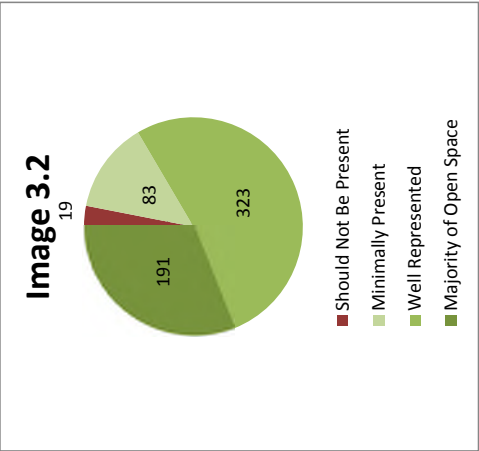


Image 3.3: Average Score = 2.6

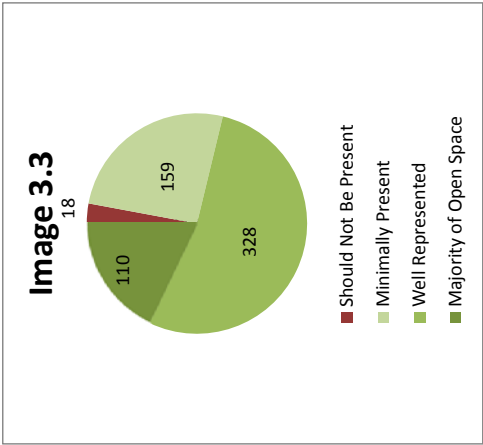


Image 3.4: Average Score = 2.6

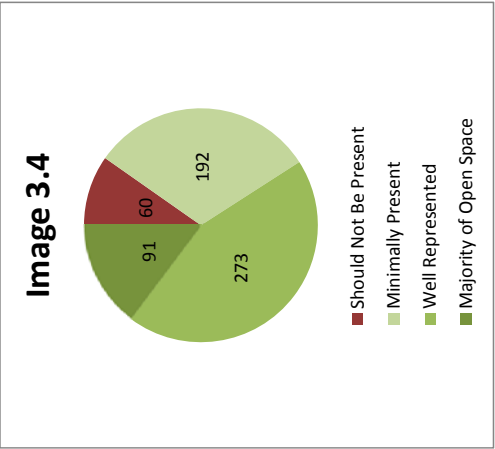


Image 3.5: Average Score = 2.4

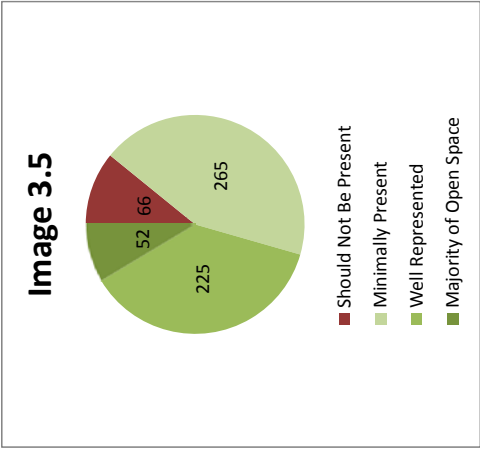


Image 3.6: Average Score = 1.7

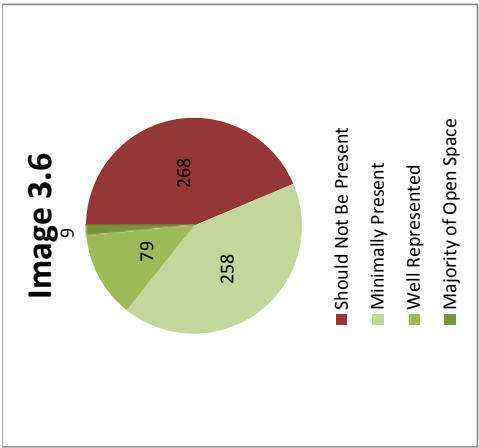


Image 3.7: Average Score = 2.1

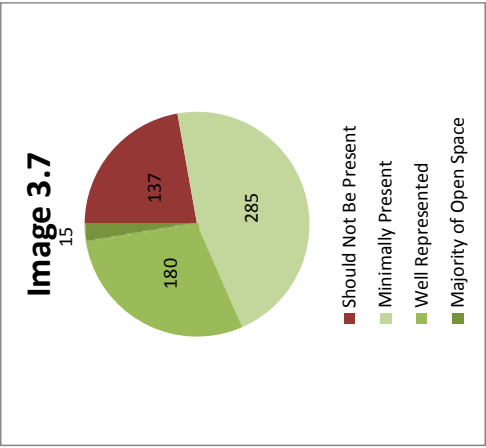


Image 3.8: Average Score = 3.0

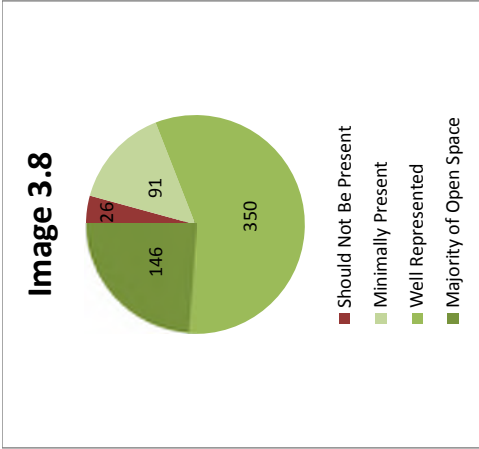


Image 3.9: Average Score = 2.8

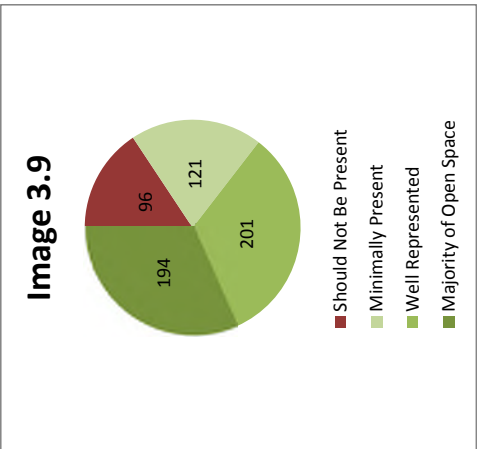


Image 3.10: Average Score = 2.0

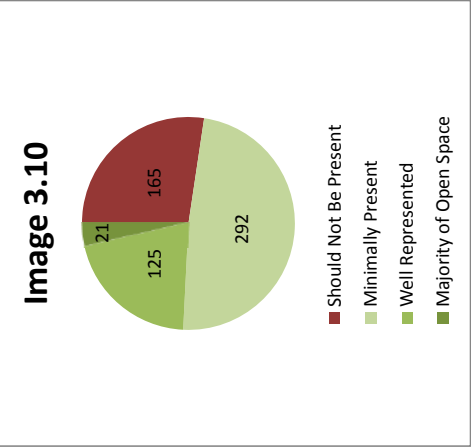


Image 3.11: Average Score = 3.1

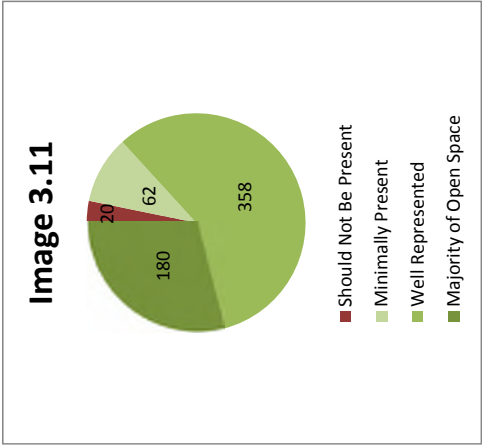


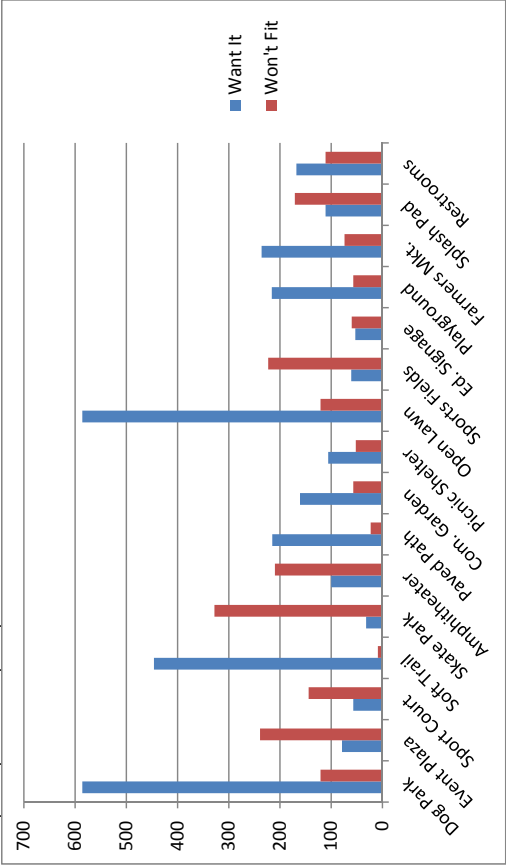
Image 3.12: Average Score = 2.8



Station 4: Park Amenities

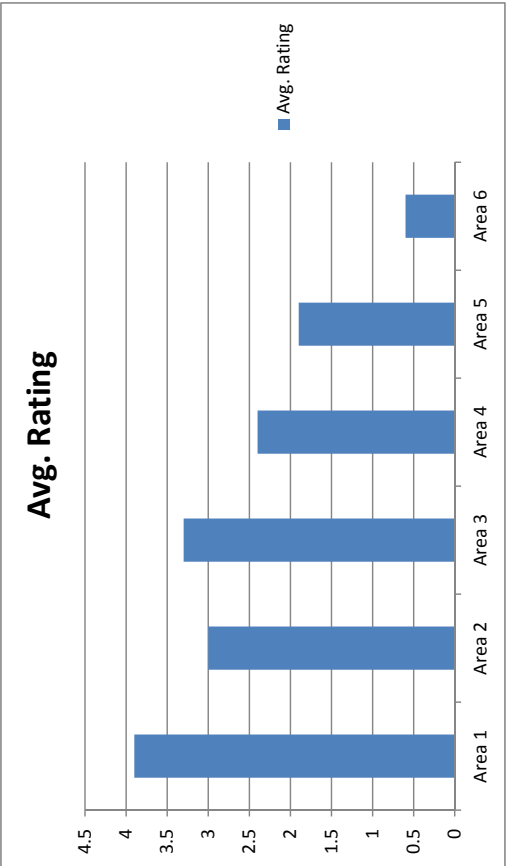
What amenities would you like to have available within the public parks and open spaces on this site?

Please list the 5 amenities you would most like to see and list up to 5 amenities that you think would not fit into the site's public parks and open spaces:

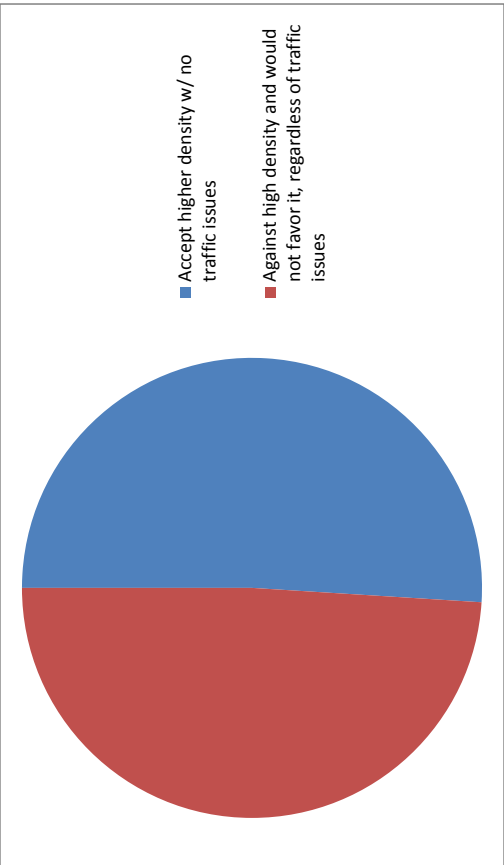


Station 5: Development Density

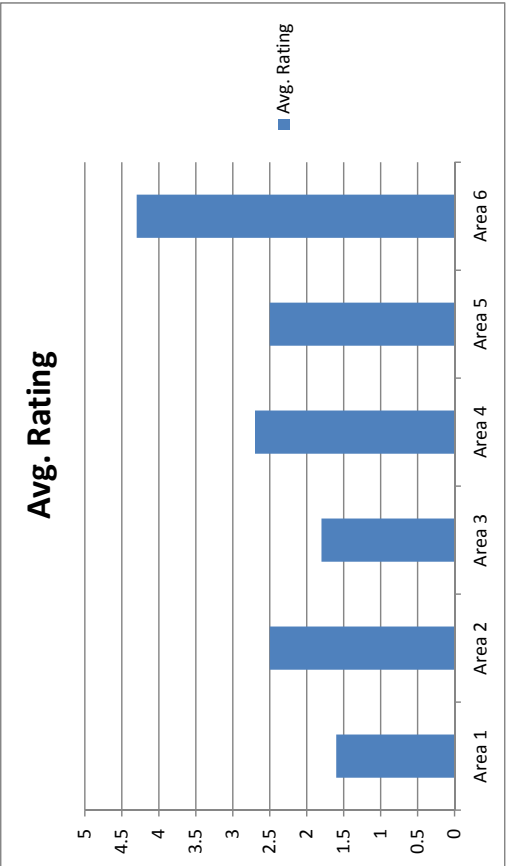
Most Appropriate for Higher Density



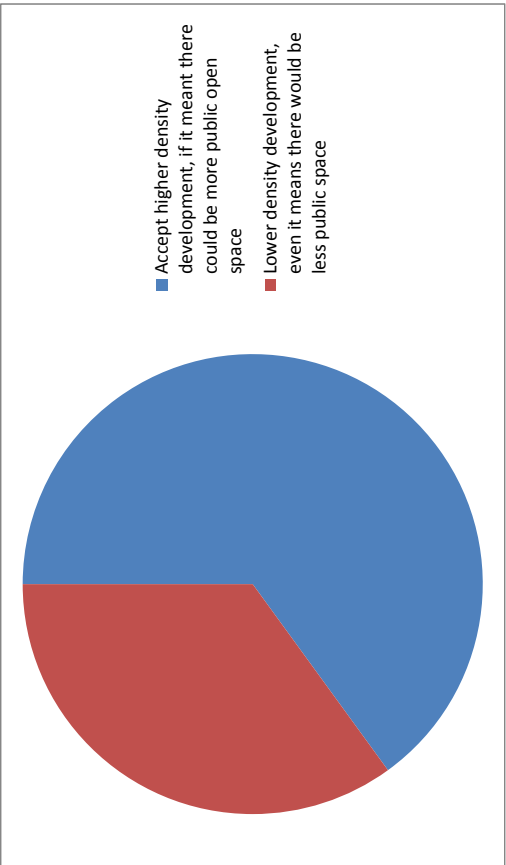
Density Development on this Site



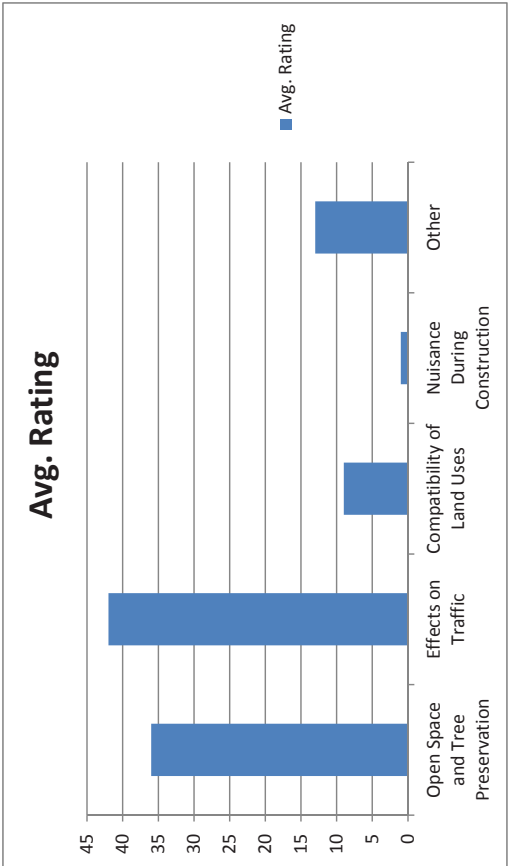
Most Appropriate for Open Space



Disregarding Traffic Issues, Density Development on this Site

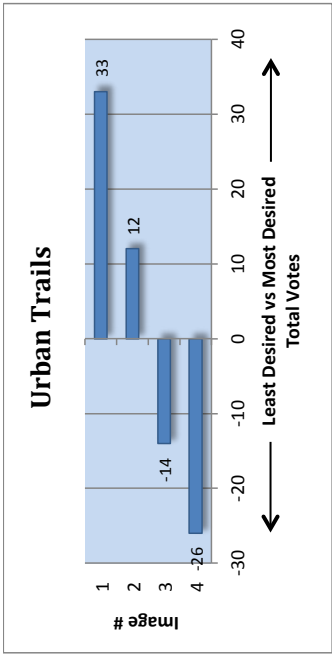
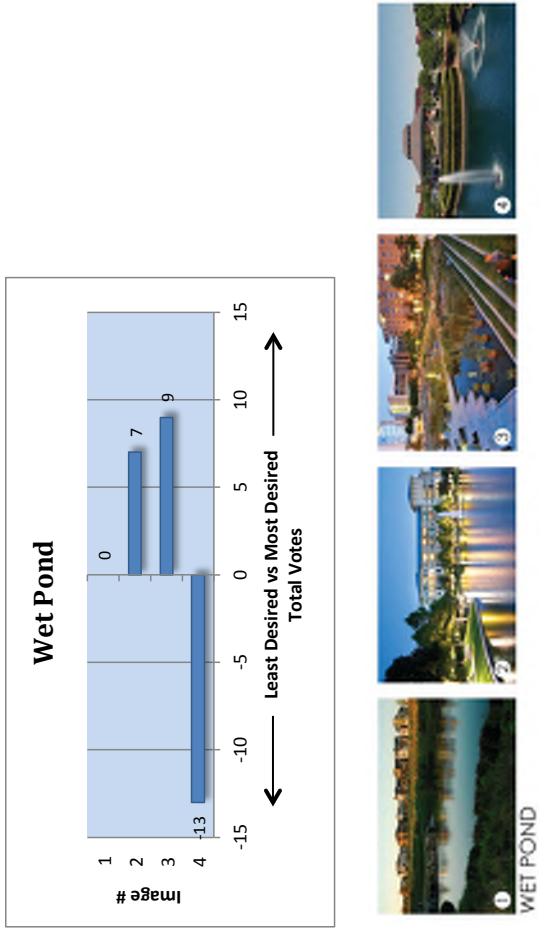


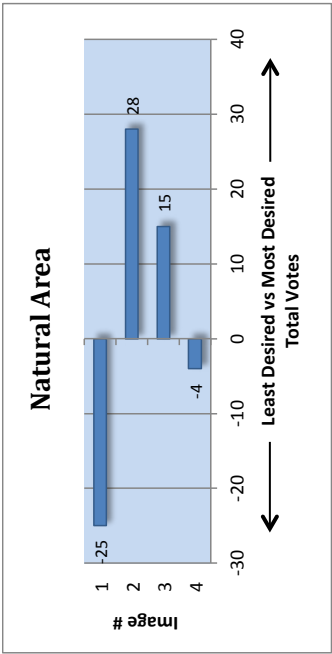
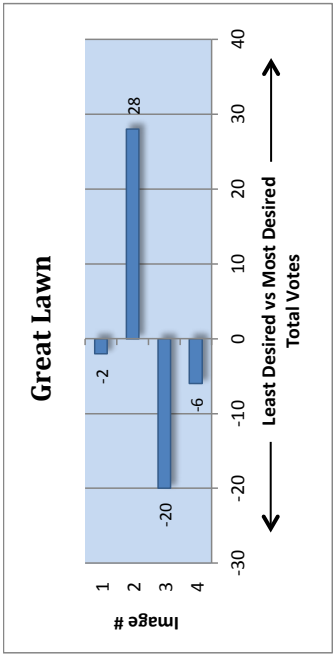
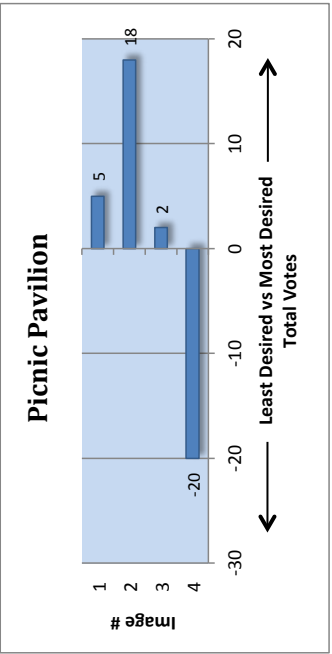
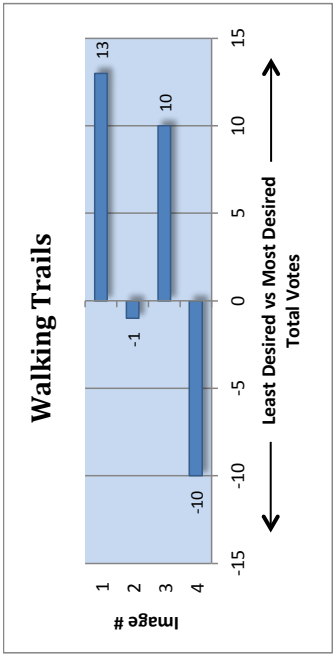
Station 6: Additional Questions
Greatest Overall Concerns



Grove at Shoal Creek
Park Design Meeting Survey Results
Meeting Held: 12/12/15

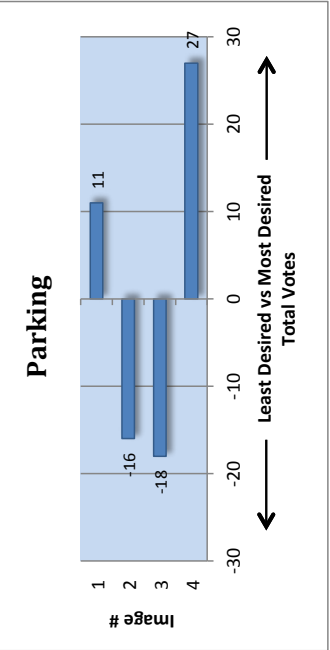
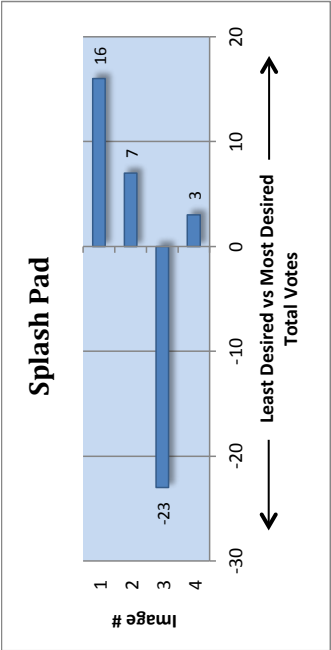
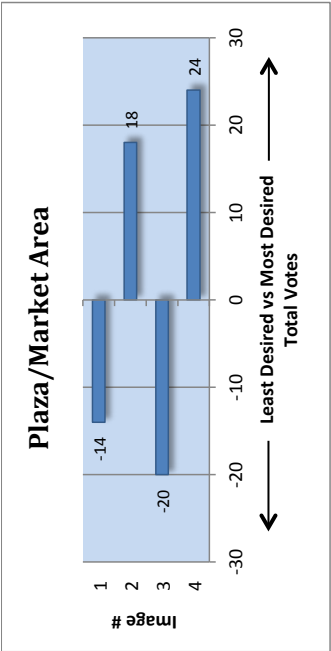
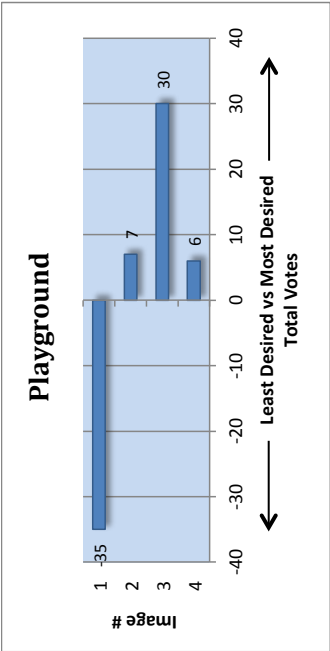
STATION #1 – Park and Amenity Character

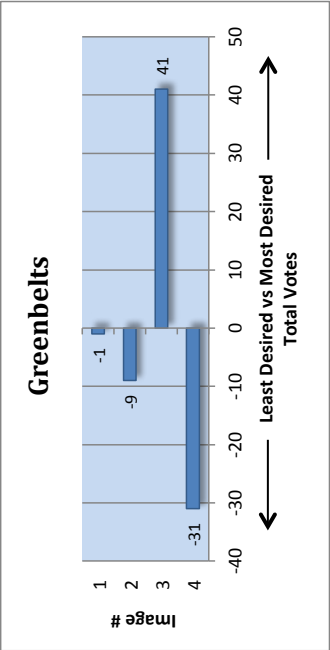
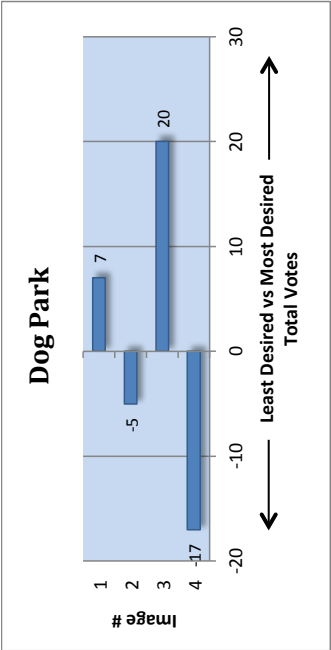
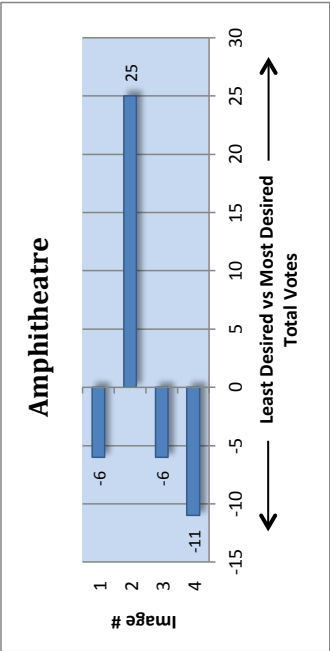
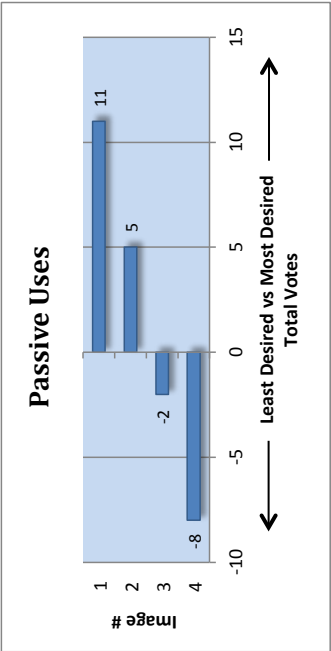


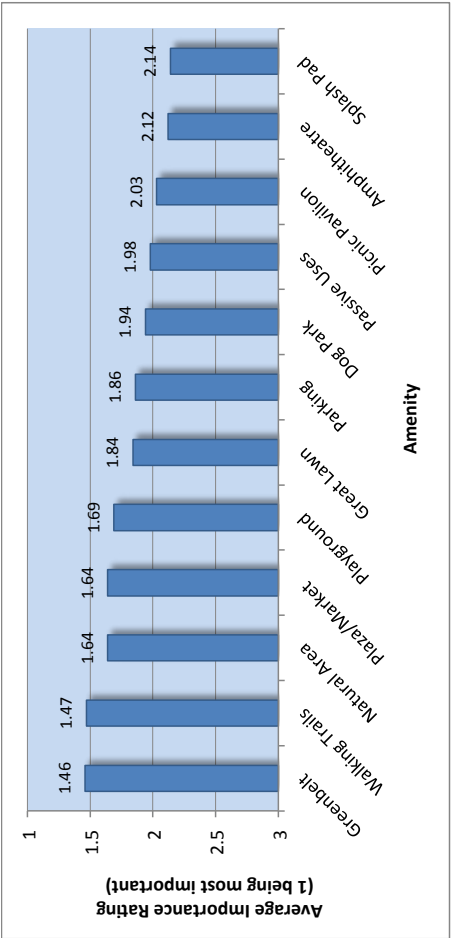


2

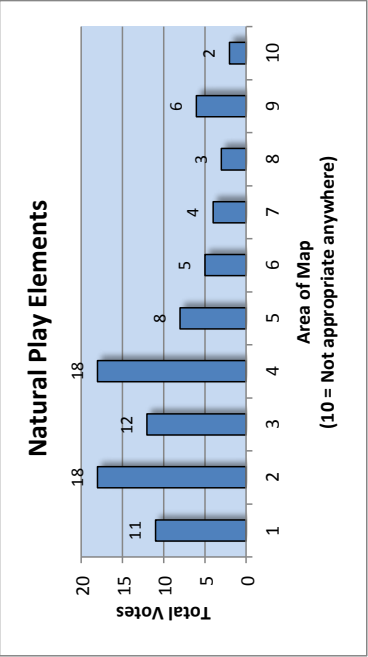
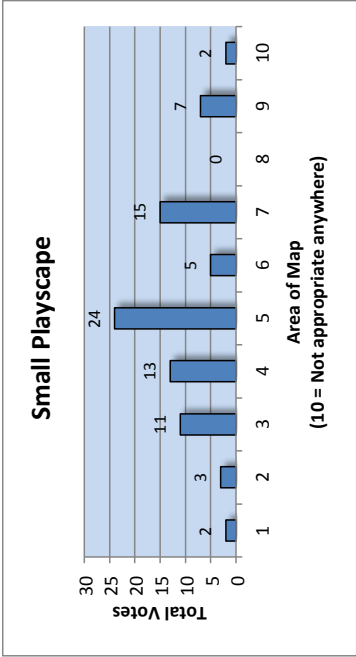
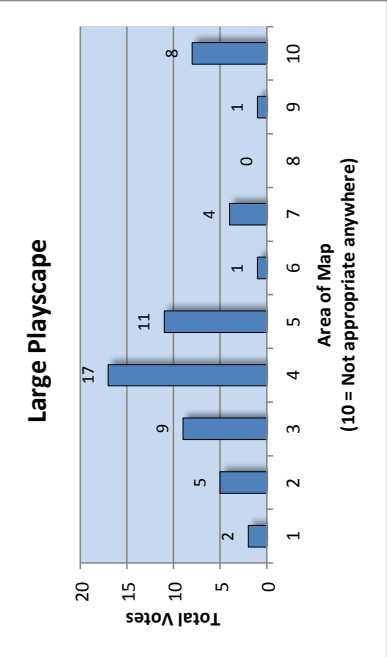
3

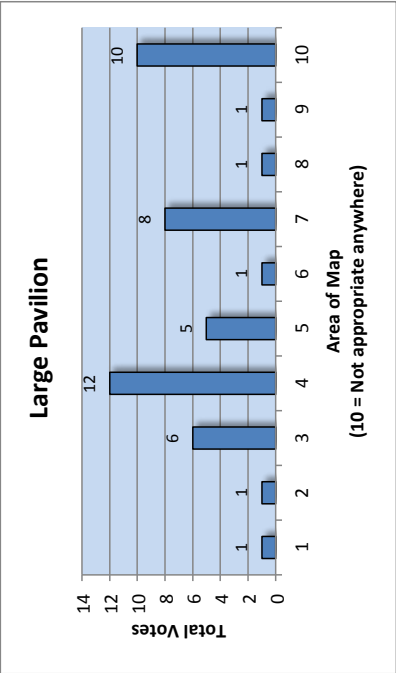
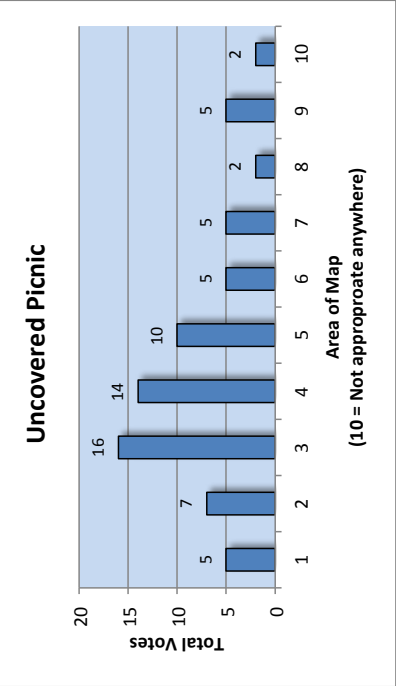
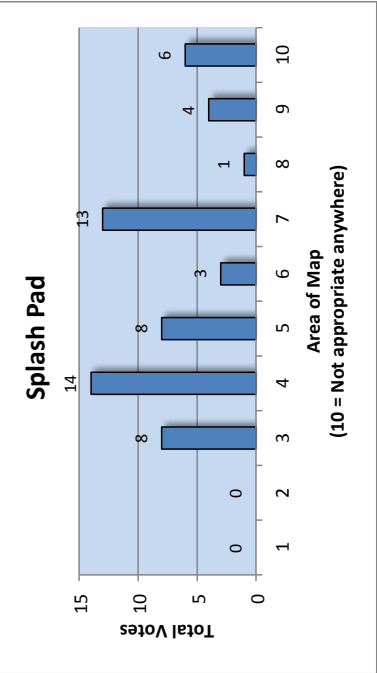




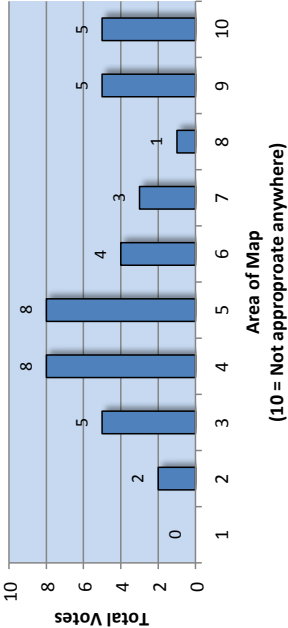


STATION #2 – Site Opportunities

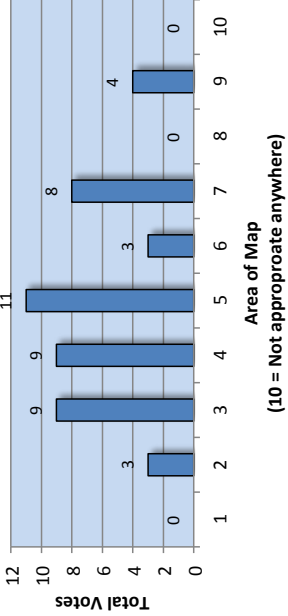




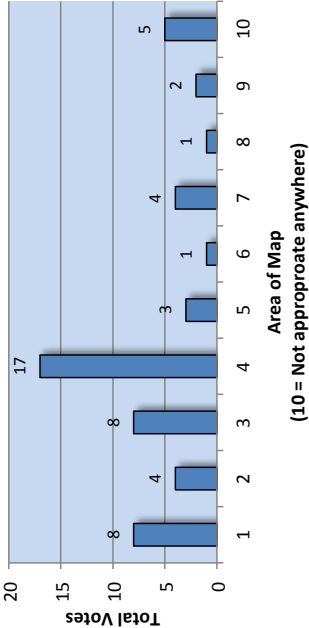
Sports Court

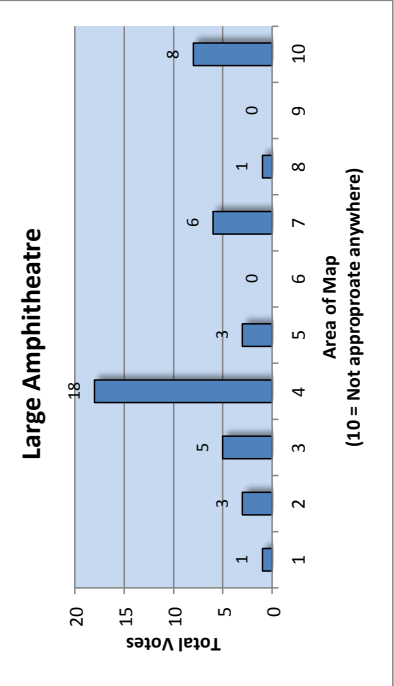
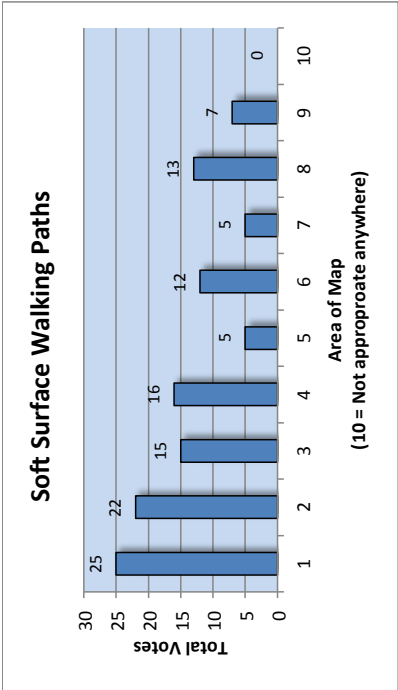
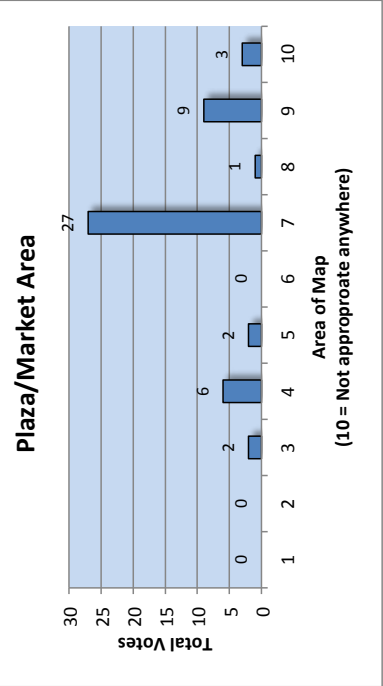
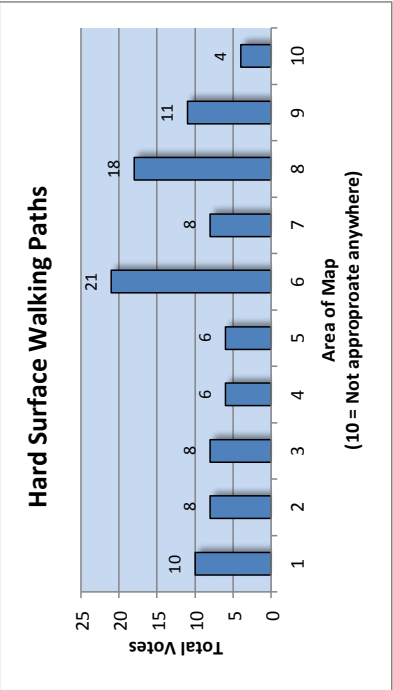
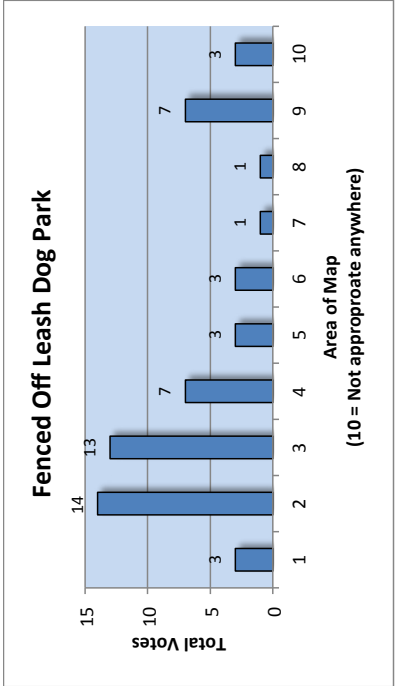
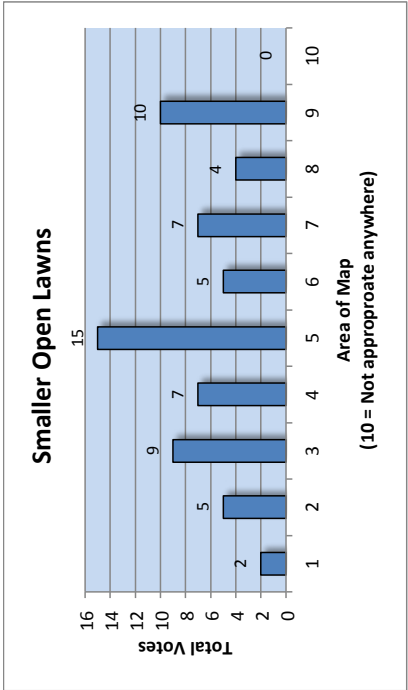


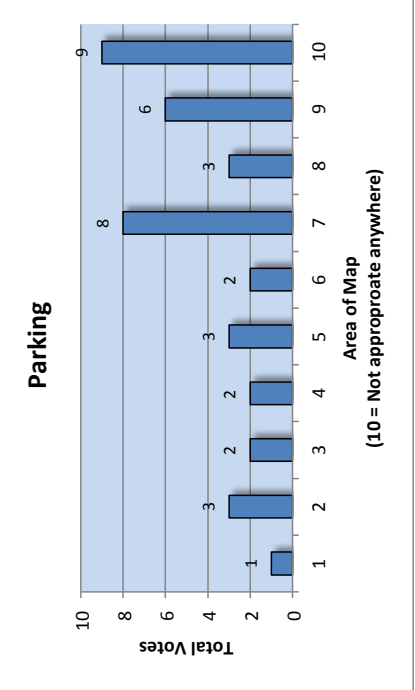
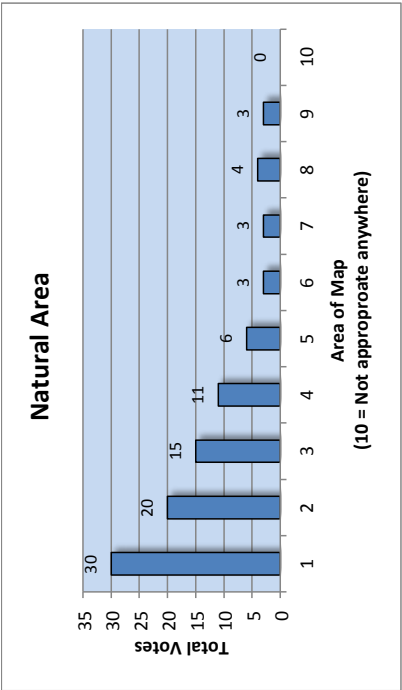
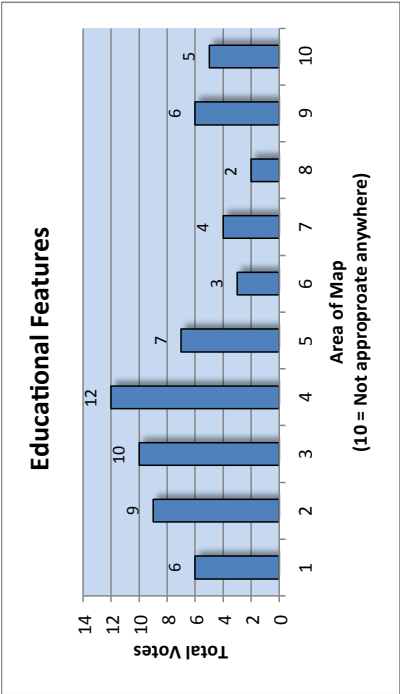
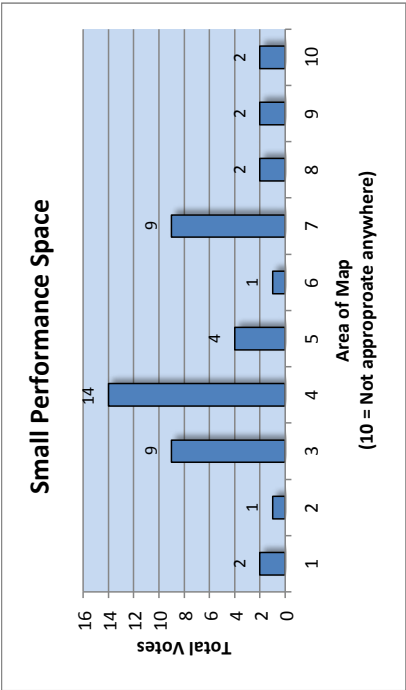
Small Pavilion



Great Lawn



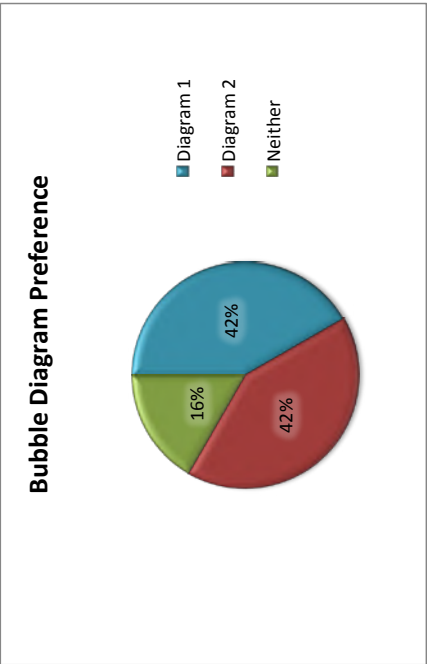




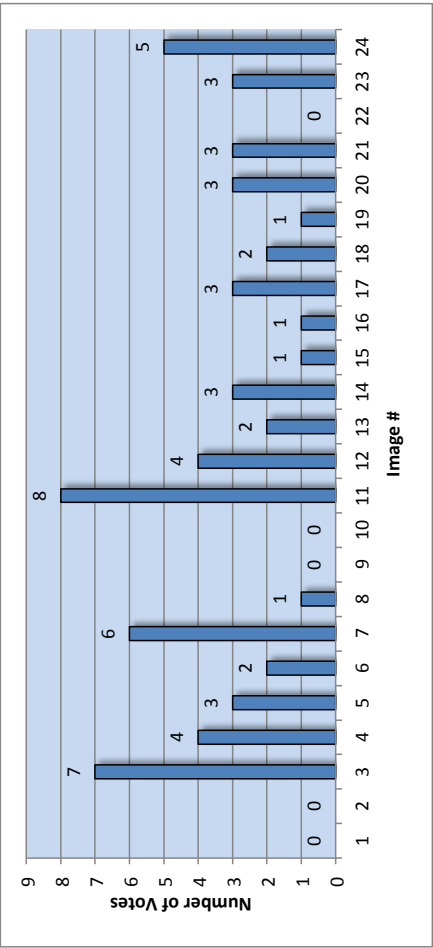
Other/Write-in Suggestions:

- Adult Swings (1)
 - Bocce Ball (1)
 - Pickleball (1)
 - Bike path connection to Shoal Creek Trail (1)
 - Bridge across Shoal Creek (2)
 - Overlook @ pond/creek (1)
 - Public Art (2)
 - Rock Climbing (2)
 - Waterfall (1)
 - **Trail loops (3)**
 - Greenbelt along Tract E (1)
 - **More Park Acreage (5)**
 - Bike Parking (1)
 - Benches throughout (1)
 - Farmer's Market (2)
 - **Community Garden (3)**
- Wild Food Forest (1)
 - Wifi (2)
 - Community Pool (2)
 - Art/Culture Center (1)
 - Public Restrooms (1)
 - **Ball Fields, Soccer and Softball (4)**
 - Splash Pad (1)
 - Local Shopping (1)
 - Restaurant w/ outdoor seating near playground (1)
 - Rain Gardens (1)
 - Mini "Rittenhouse Square" (1)
 - Wildlife (1)
 - Fitness Stations (2)
 - Biergarten (1)
 - Basketball Court (1)
 - Small Water Feature (1)

STATION #3 – Bubble Diagrams



Kid's Station



Summary of Common Notes from Surveys and Maps

- Many people mentioned more park land so that they don't have to choose between natural and improved – they want both.
- Pretty divided on wanting a natural or improved park, but even those who want more amenities desire elements that are smaller and more natural in character.
- Parking doesn't seem like a huge priority, bike parking is important though. Instead of providing actual parking just provide a loading/unloading zone.
- Sustainability: drought tolerant, especially in the case of the large lawn area.
- How do we incorporate more green into the development without using more acreage – green roofs, green walls, rain gardens, lots of street trees, etc
- Trails that are accessible and provide large loops are desired.
- People are very torn on the dog park.
- People want shade in their great lawn.
- A desire for choices – large gathering vs intimate conversation, walk in nature vs play ball on the lawn, sun vs shade.
- The idea of interactive/adventure learning for kid's amenities, playground and splash pad. Do something different and innovative.
- Can we make the creek area more useable? Many people mentioned that they often just go down in there and poke around with their kids, would love to continue doing that but maybe get it cleaned up a little bit and provide stairs for easier access down the embankment
- Public art comes up a lot, specifically interactive.
- Safety is a concern – lighting and separation of peds/bikes/cars

Workshop 2: The Grove Public Parks Master Plan Meeting Summary

April 24, 2017

Introduction: Charles Mabry, PARD	Charles introduced the master planning process for The Grove Public Parks Master Plan, updated stakeholders on decisions made during the PUD process and what the roles and responsibilities of PARD and the developer would be moving forward.																																																																	
Previous Input Review: Rebecca Leonard, AIG Bull Creek	Rebecca updated the participants on Workshop 1 results and results from park-focused meetings during the PUD process as requested at the last workshop.																																																																	
Finalize Vision and Goals: Rebecca Leonard, AIG Bull Creek	<div>Rebecca reviewed draft vision and goal statements compiled from prior feedback. Participants were given a worksheet on which they could comment on the vision statement as well as comment on, add to and rank the goal statements.</div> <table><tr><th colspan="5">Goals in Order of Ranked Importance</th></tr><tr><th>Rank</th><th>Goal</th><th>Average Rating</th><th>% Rating 1 or 2</th><th>% Rating 10 or 11</th></tr><tr><td>1</td><td>Preserve and enhance the natural character and distinct natural features of the site</td><td>3.09</td><td>59%</td><td>3%</td></tr><tr><td>2</td><td>Build a critical link and destination in Austin's Shoal Creek Trail system</td><td>4.78</td><td>26%</td><td>6%</td></tr><tr><td>3</td><td>Create a place that feels open, welcoming and comfortable for all.</td><td>5.27</td><td>12%</td><td>5%</td></tr><tr><td>4</td><td>Provide opportunities for exploration, escape, and connection with nature.</td><td>5.42</td><td>20%</td><td>11%</td></tr><tr><td>5</td><td>Provide opportunities for active recreation for all ages and abilities</td><td>5.52</td><td>19%</td><td>8%</td></tr><tr><td>6</td><td>Ensure infrastructure is sufficient to accommodate anticipated use.</td><td>5.72</td><td>20%</td><td>11%</td></tr><tr><td>7</td><td>Celebrate the sites unique geology and ecology.</td><td>5.83</td><td>23%</td><td>17%</td></tr><tr><td>8</td><td>Create a vibrant complimentary interface with the adjacent urban district.</td><td>6.75</td><td>8%</td><td>20%</td></tr><tr><td>9</td><td>Develop programming and amenities that build community.</td><td>7.08</td><td>9%</td><td>22%</td></tr><tr><td>10</td><td>Celebrate the site's unique cultural history.</td><td>7.43</td><td>3%</td><td>29%</td></tr><tr><td>-</td><td>Other Goals</td><td>5.33</td><td>41%</td><td>30%</td></tr></table> <div>Full comments are included after this summary.</div>	Goals in Order of Ranked Importance					Rank	Goal	Average Rating	% Rating 1 or 2	% Rating 10 or 11	1	Preserve and enhance the natural character and distinct natural features of the site	3.09	59%	3%	2	Build a critical link and destination in Austin's Shoal Creek Trail system	4.78	26%	6%	3	Create a place that feels open, welcoming and comfortable for all.	5.27	12%	5%	4	Provide opportunities for exploration, escape, and connection with nature.	5.42	20%	11%	5	Provide opportunities for active recreation for all ages and abilities	5.52	19%	8%	6	Ensure infrastructure is sufficient to accommodate anticipated use.	5.72	20%	11%	7	Celebrate the sites unique geology and ecology.	5.83	23%	17%	8	Create a vibrant complimentary interface with the adjacent urban district.	6.75	8%	20%	9	Develop programming and amenities that build community.	7.08	9%	22%	10	Celebrate the site's unique cultural history.	7.43	3%	29%	-	Other Goals	5.33	41%	30%
Goals in Order of Ranked Importance																																																																		
Rank	Goal	Average Rating	% Rating 1 or 2	% Rating 10 or 11																																																														
1	Preserve and enhance the natural character and distinct natural features of the site	3.09	59%	3%																																																														
2	Build a critical link and destination in Austin's Shoal Creek Trail system	4.78	26%	6%																																																														
3	Create a place that feels open, welcoming and comfortable for all.	5.27	12%	5%																																																														
4	Provide opportunities for exploration, escape, and connection with nature.	5.42	20%	11%																																																														
5	Provide opportunities for active recreation for all ages and abilities	5.52	19%	8%																																																														
6	Ensure infrastructure is sufficient to accommodate anticipated use.	5.72	20%	11%																																																														
7	Celebrate the sites unique geology and ecology.	5.83	23%	17%																																																														
8	Create a vibrant complimentary interface with the adjacent urban district.	6.75	8%	20%																																																														
9	Develop programming and amenities that build community.	7.08	9%	22%																																																														
10	Celebrate the site's unique cultural history.	7.43	3%	29%																																																														
-	Other Goals	5.33	41%	30%																																																														

Review Vision and Park Plans: Robert Deegan, Norris Design	Robert described two alternatives for the Vision and Park Plans including zones of intensity and program elements for each. Participants filled out a Draft Plan Evaluation Worksheet that prompted them to evaluate how well the alternatives fulfill the goals.			
	Ranking Signature Park Concepts by Goals			
	Goal	Concept A	Concept B	
	Preserve and enhance the natural character and distinct natural features of the site.	3.12	2.57	
	Celebrate the sites unique geology and ecology.	3.01	2.43	
	Provide opportunities for exploration, escape, and connection with nature.	3.24	2.55	
	Provide opportunities for active recreation for all ages and abilities.	3.00	2.79	
	Develop programming and amenities that build community.	2.88	2.78	
	Create a vibrant complimentary interface with the adjacent urban district.	3.04	2.66	
	Ensure infrastructure is sufficient to accommodate anticipated use.	2.81	2.50	
	Celebrate the site's unique cultural history.	2.76	2.39	
	Build a critical link and destination in Austin's Shoal Creek Trail system.	3.06	2.70	
	Create a place that feels open, welcoming and comfortable for all.	3.14	2.79	
	Ranking Pocket Park Concepts by Goals			
	Goal	Concept A	Concept B	
	Preserve and enhance the natural character and distinct natural features of the site.	2.75	2.60	
	Celebrate the sites unique geology and ecology.	2.71	2.58	
	Provide opportunities for exploration, escape, and connection with nature.	2.67	2.53	
	Provide opportunities for active recreation for all ages and abilities.	2.82	2.62	
	Develop programming and amenities that build community.	2.79	2.69	
	Create a vibrant complimentary interface with the adjacent urban district.	2.54	2.63	
	Ensure infrastructure is sufficient to accommodate anticipated use.	2.64	2.60	
	Celebrate the site's unique cultural history.	2.49	2.48	
	Build a critical link and destination in Austin's Shoal Creek Trail system.	2.56	2.63	
	Create a place that feels open, welcoming and comfortable for all.	2.61	2.61	
Next Steps:	Full comments are included after this summary.			
	Rebecca and Charles informed stakeholders about the schedule and next steps.			

Workshop 2: The Grove Public Parks Master Plan
Combined Paper and On-line Poll Results

April 24, 2017

Vision Statement Comments

It would be good to have a large playground, splash pad & restrooms. Larger active zone, an amphitheater would be good.
The options seem very similar. I'm not really sure what the choices are.
Need a Dog park somewhere even if it's a small one. Ex: pocket dog parks at domain development
Find more than .5 acre for off leach dog area. Even if it similar to domain dog areas.
Good!
To say no park land used for parking sounds nice, but the reality is to create a lot of problems, traffic, space, & safety. Not wise.
Seems like a lot to expect from limited spaces. Good Luck!
Natural viewpoint would be great. Treehouse with slide sounds like a great idea but could become too crowded if it is not big enough.
Very Nice!
Great Plan!
I don't consider this an urban area, just a bit too far north. The second one is good. The third is forced. I don't think this development is a fabric of Austin, it's a new and exciting Austin, but don't try to make it something that is not to appear opposition. I think you need to tie this more and more to Shoal Creek and the Shoal Creek Trail. Other than residents at the Grove, that will be there connection to the rest of Austin. One of the jewels along the Shoal Creek corridor.
I like it, especially serving the needs of all of Austin (I'm not an immediate neighbor, but I'll be biking over).
The third bullet doesn't add anything meaningful to the vision.
I prefer urban oasis -- birds, plants, dogs. A place to get away from the hustle and concrete jungle Austin is becoming and a buffer from street and commercial business.
Appropriate IF by vibrant, you don't mean large crowds and loud concerts. Also, by all Austinites, I take it to mean that you are trying to drive people into your development
There is too much activity and planned restaurants including the pond near the "majestic" trees for them to survive long term. The paving over and building on the last piece of Blackland prairie in central Austin with a pollinator strip garden as a substitute does not contribute to "diverse natural habitat".
I add even more parkland - it needs to support the mass of people brought in by the PUD as well as the nearby neighborhoods! a multi-generational space
Active, vibrant parks that serve the needs of the surrounding neighborhoods, new and old, and all Austinites.
Love the open spaces and keeping the diverse, natural habitat
Appropriate vision statement.
Very
Love it!
Very appropriate
Exactly what it should be
Very appropriate.
Passive, preserve natural beauty, undeveloped
Open spaces that feel integral and indispensable to the fabric of Austin. What does that even mean? I really don't like that line.
I am not sure if it is an urban oasis as compared to a vibrant park
I would take out "Active" from the second sentence and add something about wildflowers.
A natural area preserving sensitive environmental features.
Urban is not adjective that should describe this park
I love the idea of action and activity for Central Austin
One of the top priorities on all input was a dog park. Clearly not included in either plan. Why did the neighbors bother with input if it was not noted/used?
The vision statement is lovely, and quite the opposite of the actual plan. A shopping mall parking lot will be more of an urban oasis. What a lost opportunity.
I am not sure what this means

Goals in Order of Ranked Importance				
Rank	Goal	Average Rating	% Rating 1 or 2	% Rating 10 or 11
1	Preserve and enhance the natural character and distinct natural features of the site	3.09	59%	3%
2	Build a critical link and destination in Austin's Shoal Creek Trail system	4.78	26%	6%
3	Create a place that feels open, welcoming and comfortable for all.	5.27	12%	5%
4	Provide opportunities for exploration, escape, and connection with nature.	5.42	20%	11%
5	Provide opportunities for active recreation for all ages and abilities	5.52	19%	8%
6	Ensure infrastructure is sufficient to accommodate anticipated use.	5.72	20%	11%
7	Celebrate the sites unique geology and ecology.	5.83	23%	17%
8	Create a vibrant complimentary interface with the adjacent urban district.	6.75	8%	20%
9	Develop programming and amenities that build community.	7.08	9%	22%
10	Celebrate the site's unique cultural history.	7.43	3%	29%
-	Other Goals	5.33	41%	30%

- 27% of residents provided “Other” goals. These included requests for dog parks, tennis courts, bicycle safety, small amphitheater, community performance spaces, peaceful place of natural beauty, create a park that enhances the uniqueness of the neighborhoods, preserve the uses of the of the current park, recognize historical significance of site, and splash pad.

‘Other’ Goals Provided
Dog Park
Dog Park
Tennis Courts
Help mitigate flooding along Shoal Creek.
Off Leash Dog Park
Emphasize pedestrian and bicycle safety.
keep it natural
Provide a small place for performance art - small amphitheater. The city is severely lacking outdoor community performance spaces. Zilker Hillside is the only one I can think of.
i did not use other

Preserve a peaceful place of natural beauty that is undisturbed by development, bikes, restaurant food, trash, concrete and other infrastructure
Activities that are difficult to duplicate (and difficult to find) Like a swimming pool and tennis court would be the best overall improvement to the plan. I do not at all understand the goal of an amphitheatre. All this creates is noise complaints.
Enhances the uniqueness of the neighborhoods
Preserve the uses of the site that have been in place for many years -- walking trails, access by adjacent neighbors, dog friendly.
Recognize historical significance of site
Additional heritage, protected and non-protected tree preservation
I would like to see a designated off leash dog park area.. when it mentions creating a space for all... to me that includes our four legged friends. When it mentions preserving the natural character.. it being a unique and wonderful dog park to a tremendous number of people for many (over 20) years, that's become a huge part of its character.
Provide dog park with off leash area
Large lower field for dog park will be very attractive to residents in such a crowded area. Midlevel wildflower field, trees and bushes fenced off for people to view and walk around but not on; will permit some aspects of natural world to continue to exist; fence off before construction begins.
Splash pad!!
The #1 request on the original survey of the surrounding neighborhood was a dog park. Are there designs honoring that request -- even if it's created through a retail proposition, similar to the Yard Bar on Burnet Rd.?

Ranking Signature Park Concepts by Goals		
Goal	Concept A	Concept B
Preserve and enhance the natural character and distinct natural features of the site.	3.12	2.57
Celebrate the sites unique geology and ecology.	3.01	2.43
Provide opportunities for exploration, escape, and connection with nature.	3.24	2.55
Provide opportunities for active recreation for all ages and abilities.	3.00	2.79
Develop programming and amenities that build community.	2.88	2.78
Create a vibrant complimentary interface with the adjacent urban district.	3.04	2.66
Ensure infrastructure is sufficient to accommodate anticipated use.	2.81	2.50
Celebrate the site's unique cultural history.	2.76	2.39
Build a critical link and destination in Austin's Shoal Creek Trail system.	3.06	2.70
Create a place that feels open, welcoming and comfortable for all.	3.14	2.79

- Signature Park Option A comments included statements about where a splash pad would be located, preference to this option for the larger amount of lawn, the need for many accessible trails, the bridge on the southern portion of the site is not needed, how the decks under trees may harm trees vibrancy, concentrate recreational amenities near public plaza, lack of active spaces for kids and families.
- Signature Park Option B comments included increasing the size of the playgrounds, appreciation for the amount of active zones provided, concern over potential problem with active recreation in environmentally sensitive areas, overall a park that would be fun for all ages.

Signature Park Option A Comments
Key Question is where is splash pad in this option?
I recommend this option due to larger amount of open lawn.
Option A Preferred!
Bridge at southern end of property is problem, but this is better than concept B
Outdoor Exercise Area?
There is no detail about supportive infrastructure & neighborhood interface.
Hard to tell on this map how it meets some of this criteria.
You need plenty of accessible trails. No need for a bridge at the south end, as you're already connecting into the Ridgelea trail.
dislike decks into trees that may harm tree's vibrancy. Hate that proximity to restaurants means trash and food will be in the park. Bike speed should be limited through this area to make it safe for pedestrians and explorers. I wanted to leave blank #9, 10, 11 - my point being do not do these at all!
This plan is the better of the two, but there is still so much park lost. The pond takes up too much space. The cul-de-sac at the north end is unnecessary. Why can't Jackson Avenue naturally end in an east-west street rather than have it's own large circle drive that creates additional traffic close to the homes on 45th?
Prefer Option A - concentrate recreational amenities near public plaza, focus rest of the site on preserving natural areas, trails.
southern bridge location feels too close to existing houses on 4100 block of Jefferson. The height of bridge and switchback trail is very close, please keep the existing natural vegetation in that area.
Option a is overbuilt, pushed to the creek edges that will be washed away over time
This does not have enough fun places for kids and families
More play area

Signature Park Option B Comments
I like the splash pad- playground would be better if it were bigger.
I think all ages playzone/splash pad should be located on town square. The splash pad would require more concrete & is only used part of the year. There is a really close/ underutilized splash pad at Bailly Park(walking distance)
if an off-leash dog area is provided, it must be fenced.
Seems more fluid
I prefer this option w/ more active zones
I'm having a hard time seeing the details on this map.
It could use a larger playground and a public pool as well
Option B is too busy - needs to be more peaceful, more natural
Potential problem with active recreation in areas that are environmentally sensitive.
the southern bridge connection is very close and intrusive to existing houses at 41xx Jefferson back yards. also switchback trail very close to back yards. please keep existing vegetation
Very overbuilt, few open spaces, more of a commercial area than a park
This looks fun for all ages!
More play area
Dog park

Ranking Pocket Park Concepts by Goals		
Goal	Concept A	Concept B
Preserve and enhance the natural character and distinct natural features of the site.	2.75	2.60
Celebrate the sites unique geology and ecology.	2.71	2.58
Provide opportunities for exploration, escape, and connection with nature.	2.67	2.53
Provide opportunities for active recreation for all ages and abilities.	2.82	2.62
Develop programming and amenities that build community.	2.79	2.69
Create a vibrant complimentary interface with the adjacent urban district.	2.54	2.63
Ensure infrastructure is sufficient to accommodate anticipated use.	2.64	2.60
Celebrate the site’s unique cultural history.	2.49	2.48
Build a critical link and destination in Austin’s Shoal Creek Trail system.	2.56	2.63
Create a place that feels open, welcoming and comfortable for all.	2.61	2.61

- Pocket Park Option A comments included suggestions to increase seating, include historical memorial in this park, increase access from surrounding areas to not look like a private park, possibility of tennis courts.
- Pocket Park Option B comments included suggestions to keep playground sheltered from the street but close to other amenities, include historical memorial, increase seating, increase accessibility, include dog park here.

Pocket Park Option A Comments
Design is OK for all seems community input/ refinement is generally limited to items like where the playscape is.
I recommend this option due to larger open lawn.
Like the flat open space in NW corner. Prefer seating deck with view over Plan B's actice deck. Like- No Amphitheater.
These two concepts are so similar that the choices are not significant.
Like no lengthy green space & more access to plays cape.
Could the pocket park have a couple of tennis courts?
Outdoor Excersize Area?
Tennis Courts?
Much better. I can see this map.
Needs more seating areas. Needs more access from surrounding areas. It shouldn't look like a private park.
Terrible location
There could be more seating and a bigger playground
Why isn't there room for an off-leash dog area here?
Include prominent educational memorial to commemorate former state school for blind and deaf. these questions difficult to asnwer . I prefer Option A to option B but still feel like area too small for heavy usage it will resceive.
Splash Pad

Pocket Park Option B Comments
Don't like less passive use. Like- No Amphitheater.
I prefer this option
It seems to be more diverse and invites for exploring and spread people in different areas.
I am very concerned about the amount of cars going to and from this area as I live nearby.
Also needs more seating. Needs more accessibility.
Maintain existing ecosystems. keep Austin green
The most important thing to me is the placement of the playgrounds. The should be sheltered from the street but close to other amenities.
Not enough
The case for no dog park was weak. There is PLENTY of space to include a fenced in dog park. it was the NUMBER ONE thing people wanted.
The playground could be larger and more seating available
Too many roads in Option B
Include prominent educational memorial to commemorate former state school for blind and deaf. these questions don't feel appropriate. The area feels very small & constrained. make it larger for better score!

Overall Online Survey - Additional Comments
This park should not just turn into yet another concert venue. Any farmer's markets should not adversely affect surrounding neighbors with noise, traffic, cut through traffic and parking. The park should be kept as natural as possible, but include a combination of soft and hard trails. All parts should be accessible.
It would be good to have bigger playgrounds and a public pool/splashpad
I hope a next iteration will be more passive and natural. I hate that the suggestion for soft surfaces on a trail was immediately rejected. Why was the need for an "urban trail" that requires concrete predetermined before input? ps - with all the development and limited park area, I believe there cannot be a dog park on site, and even a dog friendly park will be difficult. Between owners and neighbors, there will be too many dogs and not enough land here.
It needs to preserve as much the open space nature of the area.
As I stated in the meeting, it needs to be made clear that existing homes on 45th can maintain access to the park through our back gates, especially if we are to use the Shoal Creek Trail to travel east/west in lieu of a sidewalk in front of our homes. At the meeting, Mr. Deegan said this "could be discussed." Frankly, that's not good enough. Also, as the owner of 2623 W. 45th Street, we are the *ONLY* home on 45th that does not get at least 50' of distance from our property line to the development. The cul-de-sac for Jackson Avenue is closer than 50' to our house as currently drawn, which in turn pushes the trail closer to our house than it will be for others. The 50' "Northern Greenbelt" needs to consistently run across the northern edge of the project.
Preserve and protect natural areas and heritage trees, concentrate active recreation closer to developed area of Grove. Thanks.
Prefer a bridge which "collects" users in the center area of the 16 acre park. The southern bridge location on west bank feel overbearing to Ridgelea neighbors. move it to middle or north with more pedestrians / commuters will be
The plans are extremely difficult to see on this survey. Had I not attended the meeting I would have no idea what these questions were asking. Another ARG bait and switch.
The number one request from neighborhood associations was an off leash dog park.
Looking forward to family fun at this new park!!
Hard to believe this is going to turn out Well when the #2request of a dog park was completely left out.
Please have a splash pad
If a dog park is in the works, but hasn't been communicated yet, please do so. Honoring the #1 request of the surrounding neighborhoods will demonstrate so much good will on your part.

Workshop 3: The Grove Public Parks Master Plan
Meeting Summary

May 30, 2017

Introduction: Charles Mabry, PARC	Charles introduced the master planning process for The Grove Public Parks Master Plan, updated stakeholders on decisions made during the PUD process and what the roles and responsibilities of PARC and the developer would be moving forward.
Previous Input Review: Rebecca Leonard, AIG Bull Creek	<p>Rebecca updated the participants on Workshop 2 results. Rebecca reviewed a final draft of the vision and goal statements with changes tracked from prior feedback.</p> <p>Although, there was concern that the online poll after Workshop 2 wasn't kept up long enough, there was general consensus about the changes made to the vision and goal statements.</p>
Parks Plan and Potential Phasing: Robert Deegan, Norris Design	<p>Robert reviewed a revised Vision and Park Plan that depicts the long-term vision. Participants were given a worksheet on which they could read a description of the Core Infrastructure recommendations and the ten recommended projects broken out by geography, amenity type, and logical construction sequencing. The worksheet included cost ranges as well. These costs were simply there to inform participants about the relative scale of each project and may have some bearing on the final phasing of implementation. The worksheet asked participants to state high, medium or low priority for each project.</p> <p>Questions or Concerns raised at the meeting are as follows:</p> <ul style="list-style-type: none">• Illustrate the row of trees that buffer the edge of the park along the homes on Idlewild Rd.• How will this park feel open to all?• Concern with maintenance. Are there examples of public parks maintained by property owner groups?• Consider playscapes that engage the child's full brain. Researcher at UT is a national leader in this.• Confirmation that the wet pond will always have water in it.• Confirmation that the pond is required.• There was a desire for a dog park on site. The consensus was a .5 acre or less, fenced dog park in the most appropriate location that can be found.• Document in the plan that the bridge detailed design will come back to the community.• What is the timeline for these improvements? <p>The contents of the worksheet was developed into an on-line poll for people who could not attend the meeting. Full results are included after this summary.</p>
Next Steps:	Robert and Charles informed stakeholders about the schedule and next steps.

Workshop 3: The Grove Public Parks Master Plan
Combined Paper and On-line Poll Results

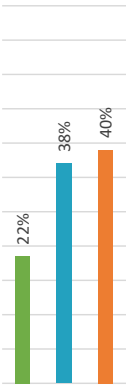
May 30, 2017



Survey Responses

The survey was conducted both in person at Public Meeting #3 and online.

	# RESPONSES
In Person	24
Online	149

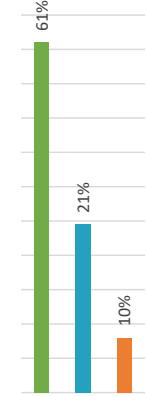


PRIORITY	# RESPONSES
High	37
Medium	64
Low	68

Project 1: Gateway Park

The corner pocket park serves as the front porch of the project. It should invite people in while providing a great vantage for relaxing and watching the world pass by.

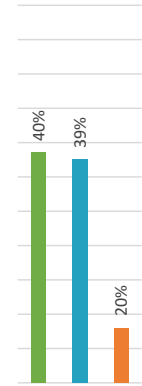
Project 2: Shoal Creek Trail Enhancements



PRIORITY	# RESPONSES
High	102
Medium	49
Low	16

The 12-foot concrete trail is a key part of the site's and city's pedestrian and bicycle infrastructure and should be designed as a complete park facility.

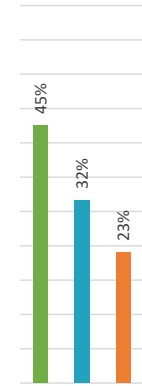
Project 3: Casual Play and Fitness



PRIORITY	# RESPONSES
High	67
Medium	65
Low	34

The northern area of the Signature Park is characterized by low-impact play for all ages, including playgrounds, trails, and fitness equipment, woven into a majestic grove of trees.

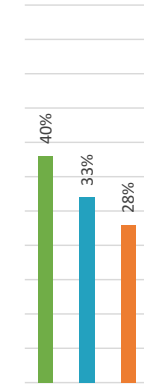
Project 4: The Great Lawns



PRIORITY	# RESPONSES
High	75
Medium	53
Low	38

The upper lawn is a flat, multi-purpose field for a wide range of activities. This is an area for relaxing in the grass, small informal gatherings, and playing catch with friends.

Project 5: The Active Hub

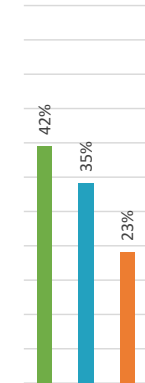


PRIORITY	# RESPONSES
High	66
Medium	54
Low	46

This area is expected to be the most intensely used part of the park, with a destination adventure playground, a large community deck full of activity, and a shade pavilion overlooking an event lawn.

Project 6: Pond Enhancements

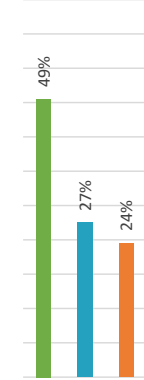
The wet pond will serve as the centerpiece of the park, a cooling and beautiful water feature that provides wildlife habitat and opportunities to explore and learn.



PRIORITY	# RESPONSES
High	69
Medium	58
Low	38

Project 7: Natural Zone Enhancements

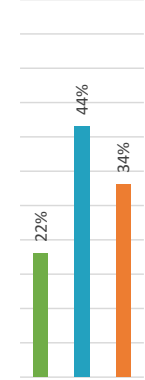
The natural zone is an escape from the surrounding city, an urban refuge. It also provides an important buffer for Shoal Creek and the site's vernal wetland.



PRIORITY	# RESPONSES
High	81
Medium	45
Low	39

Project 8: Passive Park South

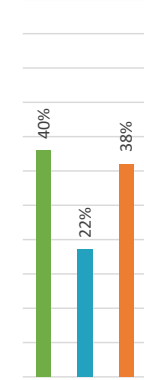
The southern area of the Signature Park is not as actively programmed, but provides ample unprogrammed lawn, paths, and gardens while also addressing some challenging grade transitions.



PRIORITY	# RESPONSES
High	36
Medium	73
Low	56

Project 9: Pocket Park Play Zone

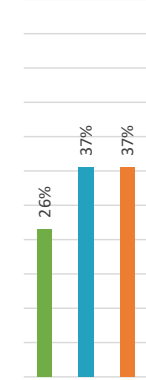
The Pocket Park will provide a family play area convenient to the southern portion of the site and surrounding neighborhoods to the south. Shaded by live oaks and a large pavilion, this will be a daily destination for families in and around The Grove.



PRIORITY	# RESPONSES
High	66
Medium	37
Low	62

Project 10: Pocket Park Gardens

This portion of the Pocket Park is characterized by shady gardens under existing oaks surrounded by open lawns and populated with paths, small gathering spaces, and a historic marker or monument.

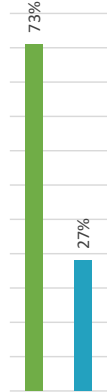


PRIORITY	# RESPONSES
High	43
Medium	61
Low	61

Note: The following responses were included in the online survey only as a response to feedback received from attendees at the public meeting

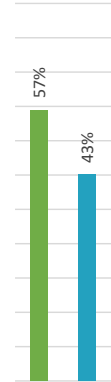
Dog Park Feasibility Study

In the May 30th meeting it was suggested that a fenced approximately 1/2 –acre dog park would be appropriate in the Parks.



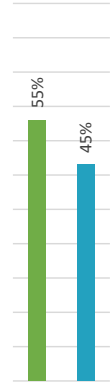
Due to environmental and other constraints, a fenced dog park is most feasible in the two areas shown on the Dog Park Feasibility Study below.

ANSWER	# RESPONSES
Yes	79
No	60



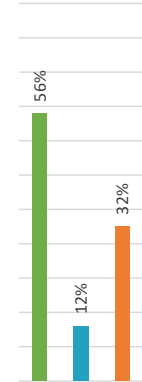
Do you believe location 2 is appropriate for this use?

ANSWER	# RESPONSES
Yes	76
No	63



Please indicate your priority for a fenced dog park in relation to the other enhancements proposed in this survey.

PRIORITY	# RESPONSES
High	78
Medium	16
Low	45

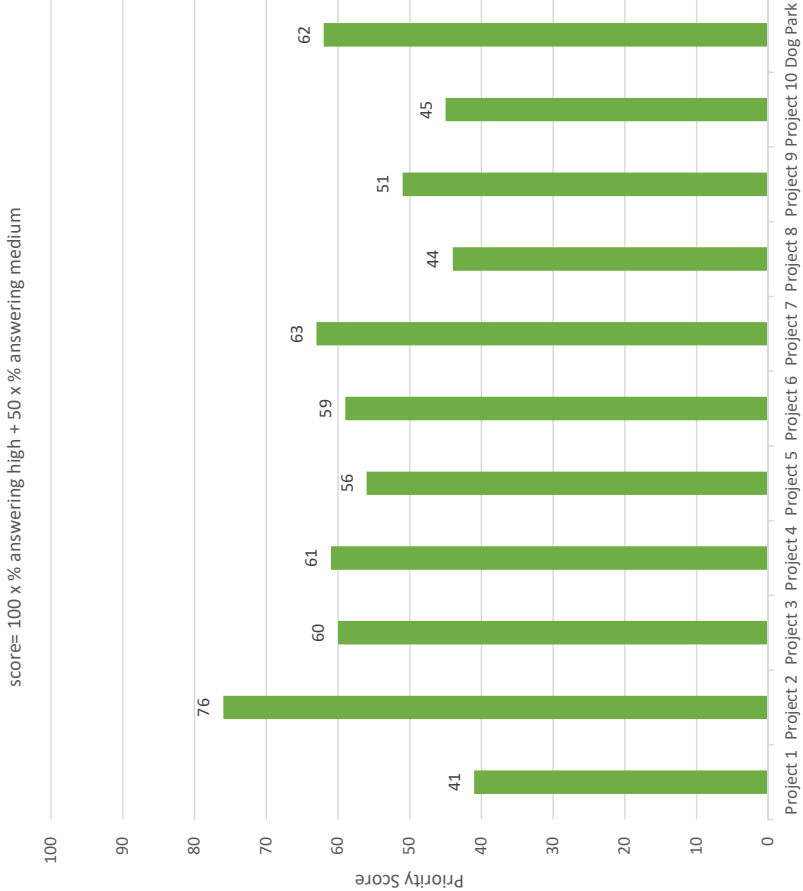


Dog Park Feasibility Study



Project Comparison w/ Weighted Average

The weighted average scores each project by the percentage of respondents giving “High” priority to a project plus half the percentage of respondents giving “Medium” priority to that project.*



**Percentage of respondents is used rather than total responses to ensure a fair comparison between projects surveyed both in person and online and projects surveyed online only.*

This Page Left Blank Intentionally