



# LITTLE STACY PARK

CLMP164 2015 Landscape Architecture Rotation List PA150000028

## Public Meeting 3 Summary

Prepared by Asakura Robinson  
January 2016

asakura  
robinson

# Agenda + Format

The third public meeting for the Little Stacy Neighborhood Park Improvements project was held on Saturday, January 23rd, from 9AM to 11AM at Travis Heights Elementary. Approximately fifteen community members participated and offered their feedback on the final site plan, which took into account community feedback on the three concepts presented in October 2015. After a presentation on the revised site plan, the project team accepted questions and comments, which will be explored in the finalization of the design.

Asakura Robinson began the presentation with a brief overview of the stakeholder process to date, including a summary three concepts and the feedback that informed the updated site plan. After presenting the final site plan and elements of the design, the project team welcomed comments and questions from participants, which will be taken into consideration for the final design.

The design team included representatives from Asakura Robinson, Altura Solutions, Architectural Engineers Collaborative, Jose I. Guerra, McCann Adams Studio and Nature Playscapes. The City of Austin Parks & Recreation Department attendees included representatives from the Aquatics and Historic Preservation Divisions.

# Public Meeting 2 Recap

“How we got here”

Rather than choosing a concept in entirety, participants were asked to score areas between the three concepts so that preferences would arise, and an integrated concept could be developed using feedback from all three.



Garden



Proscenium



Minimalism

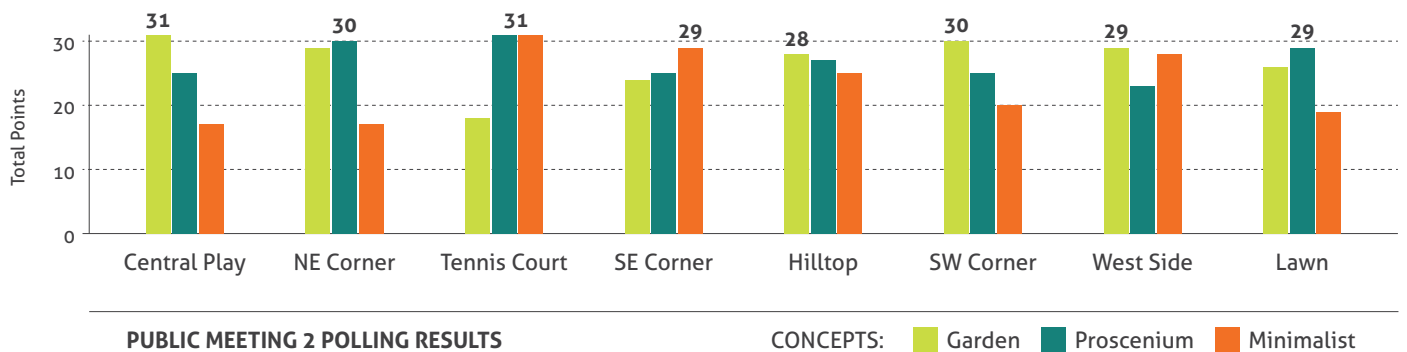


### “What we heard”

The site plan was divided into eight areas: 1) Central Play, 2) Northeast Corner, 3) Tennis Court, 4) Southeast Corner, 5) Hilltop, 6) Southwest Corner, 7) West Side, and 8) Lawn. Preferences in areas of the three concepts appeared in the results.

Through both the ranking system and public comments in meetings and via email, there were common themes that arose and ultimately influenced the final design. Community members wanted:

- Clearly marked entrances and a formal sense of arrival;
- Erosion control and stormwater management, as well as minimal impervious surfaces and the preservation of the open lawn space on the west side of the park;
- A pathway to prevent people from walking on plants and tree roots;
- A central play area that is both cohesive and appropriate for all ages to allow children to age in the park;
- Resurfacing of the tennis court and to maintain both courts for tennis use;
- Programming of the hillside through the stabilization design; and
- To preserve the WPA-era aesthetic of the park.





## Six-Part Plan

“How we responded”

The project team, using feedback from the public input process and City of Austin department recommendations, has designed a final concept plan that incorporates elements from all three previous concept schemes while opting for a delicate touch on the well-loved site.

This concept plan was introduced to community stakeholders as a Six-Part Conceptual Plan, touching on design interventions supporting six primary themes:

- Arrival & Identity
- Shelter House & Lawn
- Circulation & Cohesion
- Basketball & Tennis
- Green Infrastructure & Stormwater
- Play

These themes are detailed in brief in this summary, followed by community member responses and discussion.

## 1. Arrival + Identity

Entrances at the southwest and northeast corners of the park are formalized with a paved, accessible path, accessible parking, bike racks and mortared limestone planters that can serve as seat walls and meeting spaces.

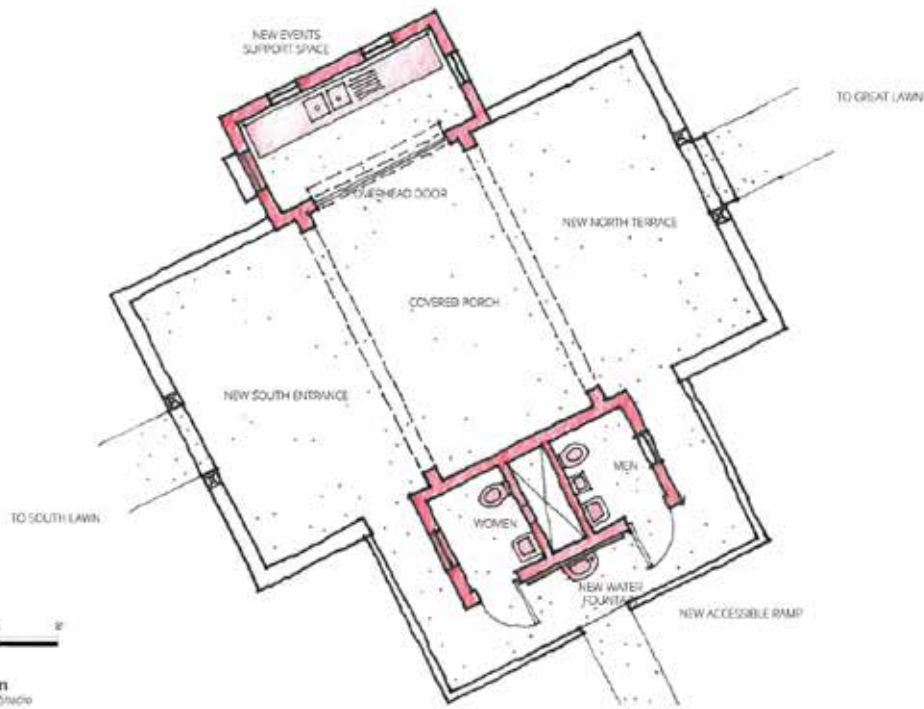
Stakeholders expressed interest in visually extending the art of the Larry Monroe Forever Bridge, with the recommendation that consultants explore collaboration with artist Stefanie Distefano.



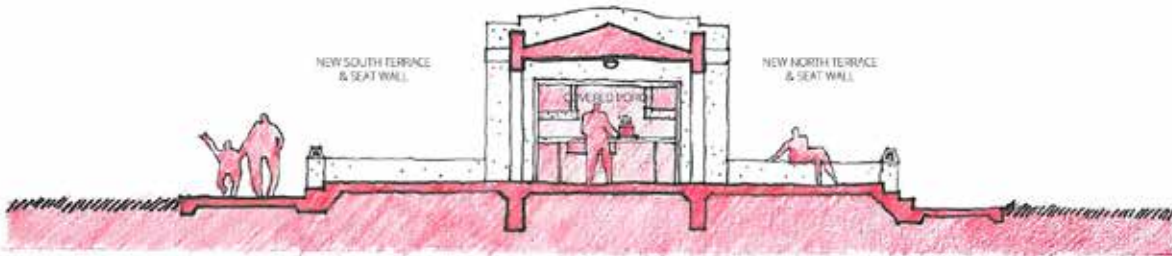
## 2. Shelter House + Lawn

The existing shelter house merits historic preservation and will be improved to maintain its historic integrity. The plinth of the house would be extended to create a larger social space with a seat wall edge. The storage room would be retrofitted as a kitchen/prep area and the bathrooms would be upgraded.

The existing lawn is considered a great asset to the park for its sunny open space, and would be enlarged by shifting the sidewalk to maximize useful space.



Shelter House Plan  
Image by McCann Adams Studio



Shelter House Section looking West  
Image by McCann Adams Studio

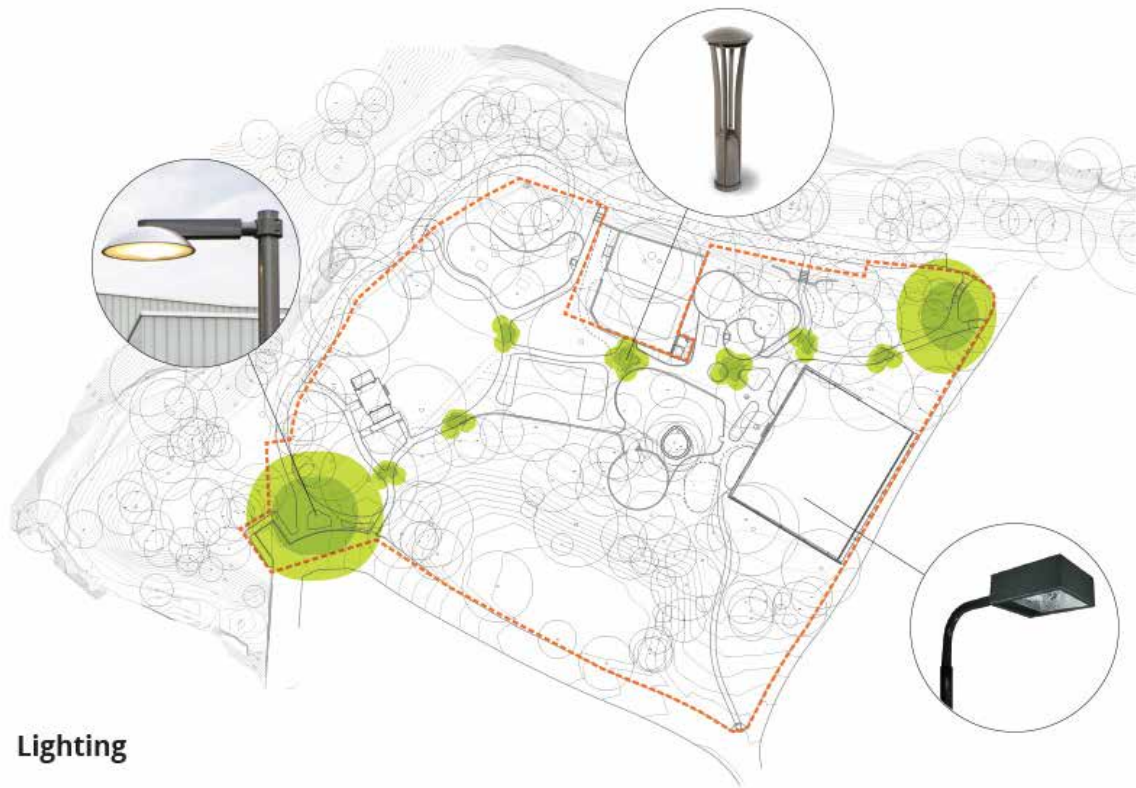


### 3. Circulation + Cohesion

The circulation will primarily be through a diagonal "spine" running across the park and centered around the central play area. Notably, the main entrance to the pool area is shifted to front the playground and park center.

Visual cohesion across the park will be achieved by replicating design elements throughout the park, including use of circular curbs, mortared walls and non-linear sidewalks. The existing asphalt surfaces will be replaced.





## Lighting

### 4. Basketball + Tennis

The existing, ill-proportioned basketball court will be fashioned into a half-court layout (with the goal to the south) by shortening and widening the existing surface. This will produce a more multi-use surface for yoga, foursquare, basketball and other uses while avoiding conflicts with the playground.

The existing tennis courts will be maintained and resurfaced, with new lighting, additional benches for players and an accessible entrance.





## 5. Green Infrastructure + Stormwater

Raingardens will be installed throughout the site to slow and detain rainwater and manage erosion on the site. They will be connected with overflow pipes and sleeving to reduce the amount of moving water on the surface of the site and the Blunn Creek bank.

The landscape plan calls for new trees to be established in the sunny south areas of the park, while shade-tolerant ground cover and perennials will make up much of the additional planting.

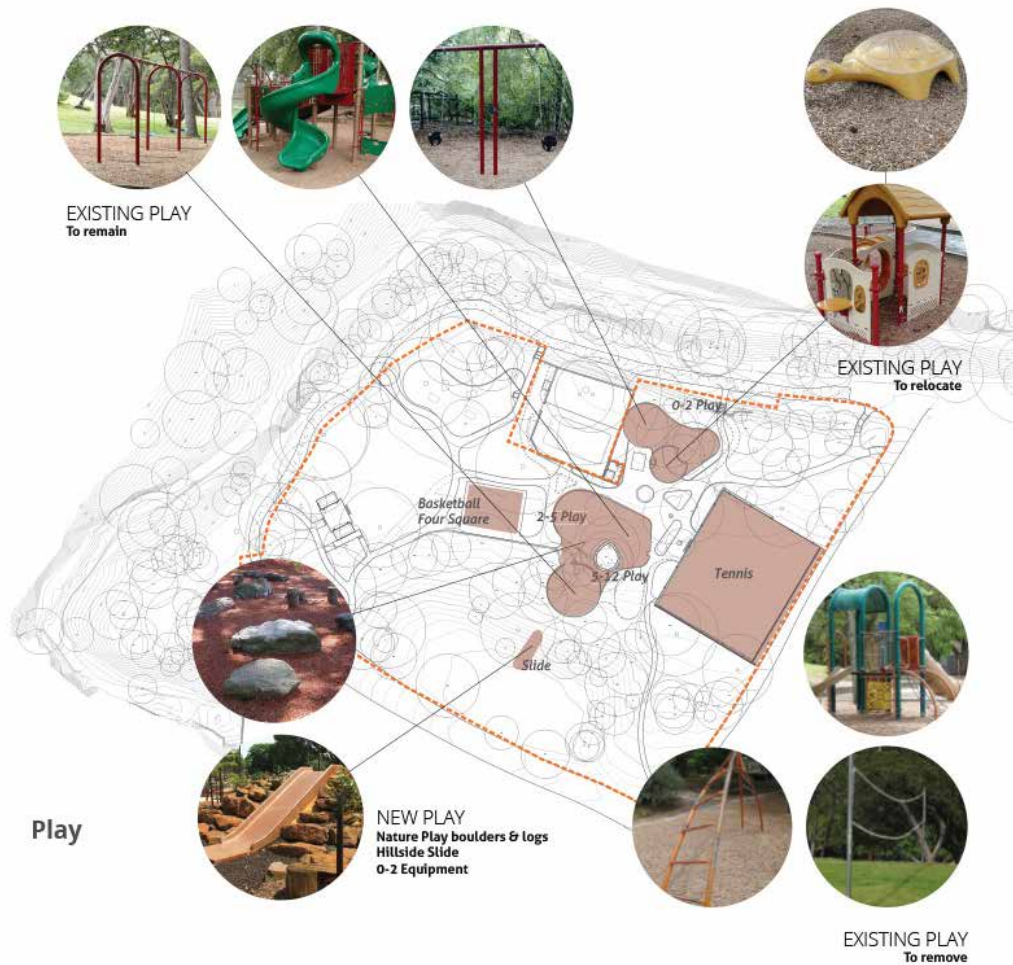


Landscape & Stormwater Management

## 6. Play

Much of the existing play equipment will be maintained and all play areas are generally enlarged. An ages 2-5 piece of equipment will be removed and replaced with a nature play elements, including climbable limestone boulders.

The 0-2 play area (currently where the turtle is) will be relocated to a synthetic turf area closer to the children's swings and within eyesight of the wading pool area. The pool's fence will be enlarged as part of a separate project and the pool will continue to be open in season.



# Community Feedback

## Shelter House

Participants expressed interest in extending the mural from the Larry Monroe Forever Bridge to the shelter house, perhaps along the proposed seat wall addition. Because the shelter house is a historic building, the preservation of its historical integrity must be explored before moving forward with an art addition.

A suggestion was made to move the aquatics storage from the shelter house, closer to the pool or to pump house, to allow more space for community gathering. Aquatics Division has indicated support of considering a move of equipment storage from the current shelter house to another location closer to the pool; however, the current pump house is not adequate or appropriate for the storage needs and a new structure would need to be brought in or constructed on-site as part of this project.

One participant thought there were greater priorities in the park that should be pursued.

## Nature Play

Participants were interested in the nature play idea that was presented, and like the idea of a boulder as a play structure. Another feature of the playscape is the creation of semi-hidden spaces that serve as a hideout, though not totally hidden.

There was no objection to replacing the 2-5 year old play structure. One participant mentioned that the older children currently use the 2-5 play area as a gathering area.

The new slide on the hillside should be metal, which is faster and more enjoyable for the children, as long as the area is partially shaded to prevent it from getting too hot. Conditions at the hillside should be adequate.



## Tennis Courts

A participant mentioned that the tennis courts were resurfaced about 7 years ago and began cracking after 6 months, most likely due to rain and water damage under the asphalt. The comment was to suggest that the courts should not be resurfaced until the water damage and drainage system is addressed. Currently the west side of the stone wall is letting water in.

## Community Garden

A community garden presented in two of the concepts in the second public meeting did not receive favorable responses; however, a few participants spoke out at the third public meeting expressing interest in the hilltop community garden. Although it is not included in the plan, the space is still available. There may be a way to fund this through the community by talking to the Parks Urban Farm Coordinator and the Sustainable Food Center for examples of funding and operations strategies. Participants expressed interest in growing persimmon, lemon, thornless blackberry, flowers, orchards and other edibles.

## Road Closure

Homeowners are still concerned about traffic increasing in the alleyway and want to know who they can work with to mitigate the problem through signage, speedbumps or other measures.

## Stormwater Management

Mosquitoes are a concern if there is standing water at the park. Rain gardens can help solve the water issue by moving the water and mosquitoes' eggs quickly into the creek. Additionally, the northeast corner of the park becomes a flood hazard during storms.



## Conclusion

- Determine with further community feedback whether the shelter house extension is a priority over other park improvements.
- Explore opportunities to extend the mural of the Larry Monroe Forever Bridge to the shelter house and how to preserve the structure's historical integrity.
- Discuss with the Aquatics Department whether the pool storage can be moved to the pump house or other location closer to the pool.
- Address site drainage before resurfacing tennis courts to ensure long-lasting repair.
- Add nature play elements, including a boulder play structure and semi-hidden spaces.
- Replace the 2-5 year old play area.
- Incorporate a metal slide into the hillside stabilization.
- Provide community members with resources for creating and operating a community garden on the hilltop.
- Continue exploring opportunities to mitigate an increase in traffic in the alleyway when Watershed Department closes the road along the creek.



For additional information, contact:

**City of Austin, Parks and Recreation Department**

Gary Gregson, Project Coordinator

[gary.gregson@austintexas.gov](mailto:gary.gregson@austintexas.gov)

512-974-9475

**Asakura Robinson**

Brendan Wittstruck, Assistant Project Manager

[brendan@asakurarobinson.com](mailto:brendan@asakurarobinson.com)

512-351-9601

# LITTLE STACY PARK

