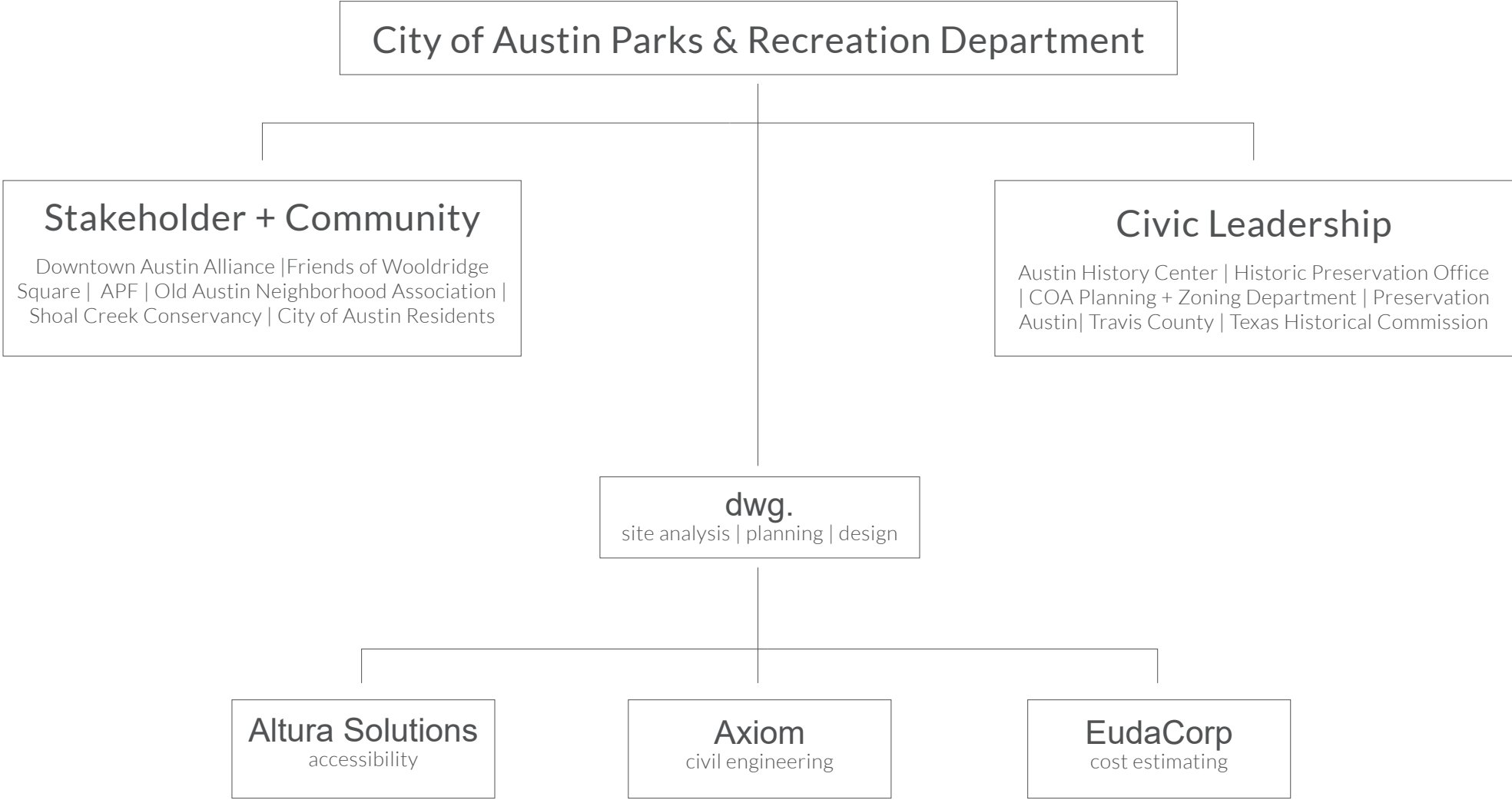




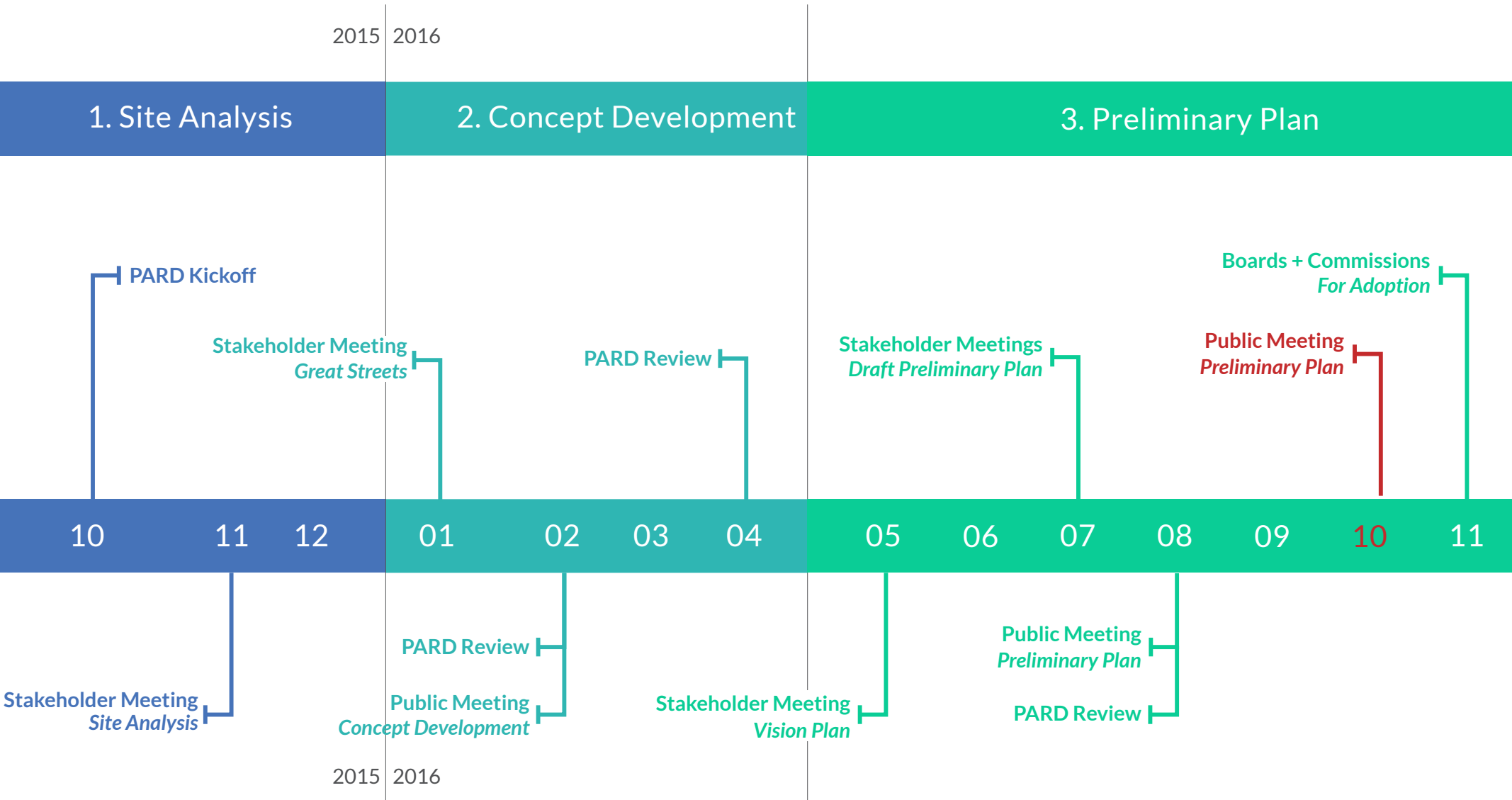
# WOOLDRIDGE SQUARE PRELIMINARY PLAN

Public Meeting #3 | October 25, 2016

# PROJECT TEAM



# PROJECT SCHEDULE







PROJECT REVIEW

100+

survey participants

7

meetings with civic  
leadership

5

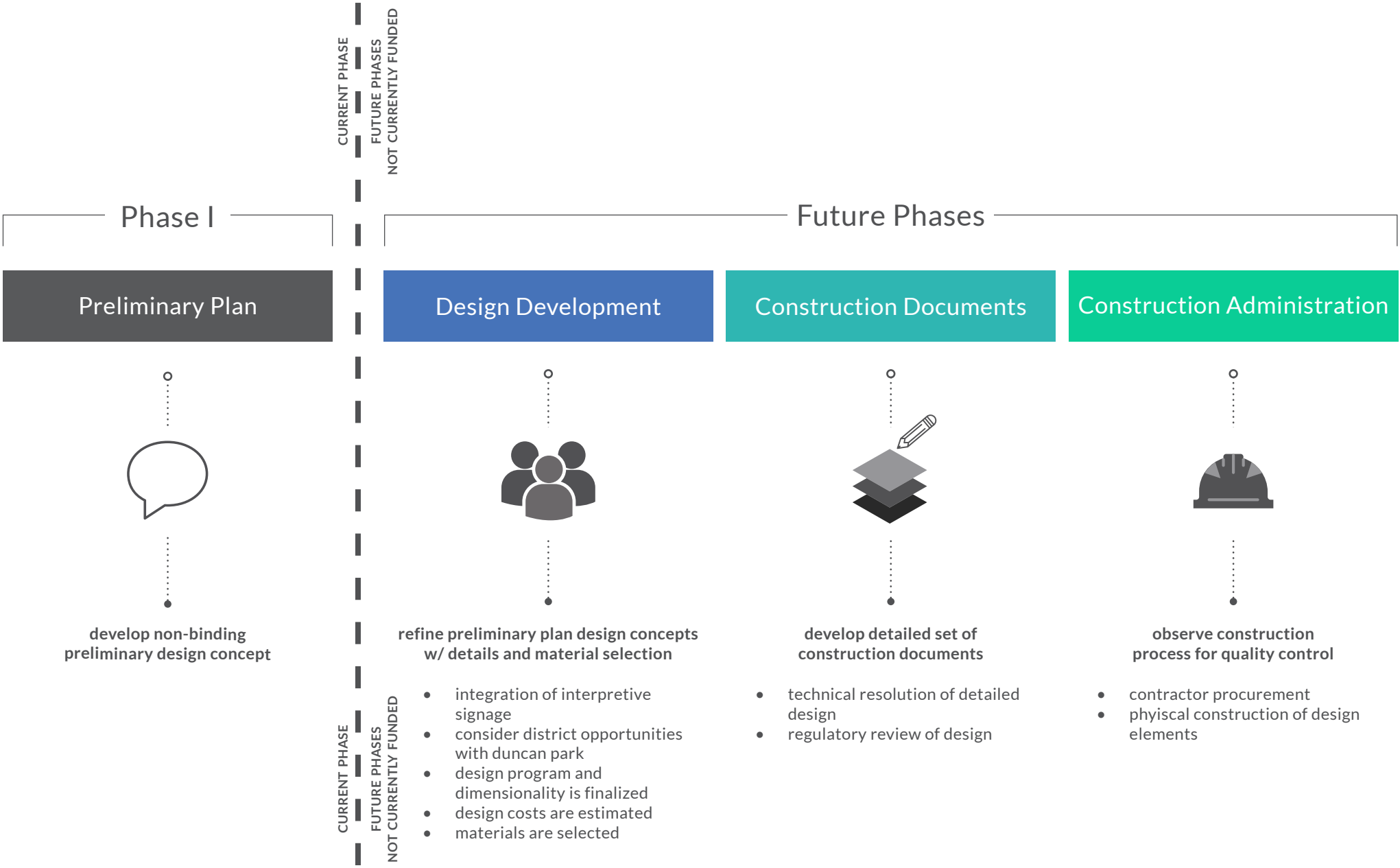
public meetings +  
stakeholder workshops

4

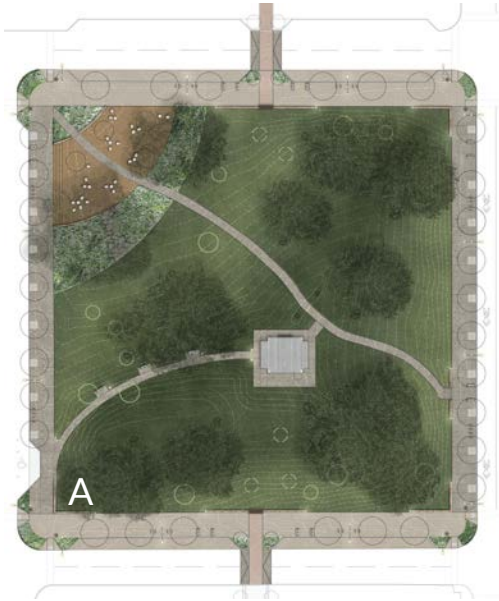
online +  
print surveys



# NEXT STEPS

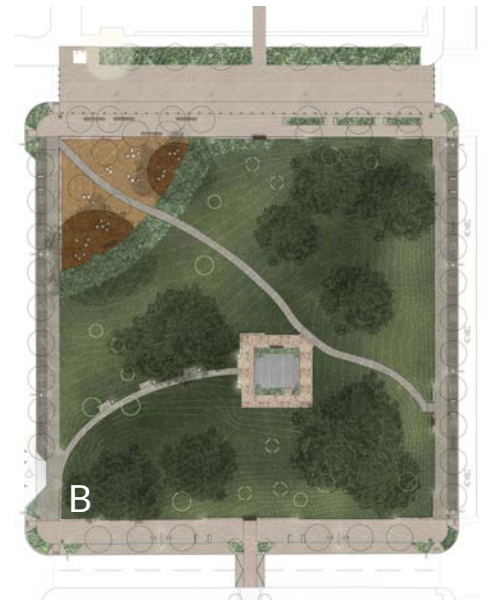


# PUBLIC SURVEY RESULTS



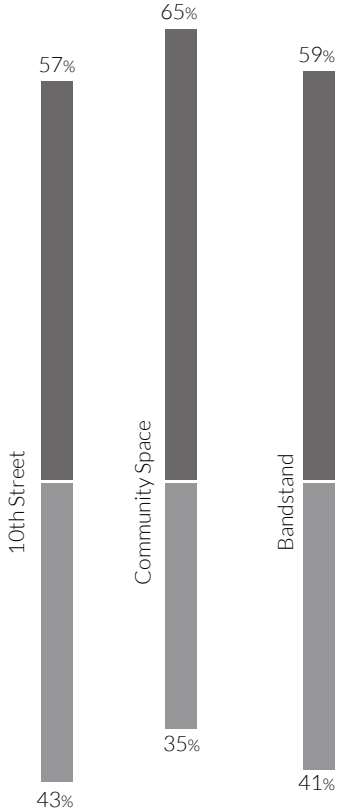
- Top Strengths
1. Visual Connection to TC + AHC
  2. Simple Design
  3. Signage + Lighting
  4. ADA Parking/Walk
  5. Steps at Community Space

- Top Concerns
1. Vertical Elements
  2. Wheelchair Lift Location
  3. Retaining Walls
  4. Planting in ROW
  5. Speed Table



- Top Strengths
1. 10th St. Sidewalk Layout
  2. On-site Restroom
  3. Proposed Trees + Silva Cells
  4. Preserved Viewsheds
  5. Moon Tower

- Top Concerns
1. 10th St. Closure
  2. Loss of Parking Spaces
  3. Width of Walk at Bandstand
  4. Material Selection
  5. Tree Deck



*Wooldridge Square is a common ground, a civic space where Austin comes together as a community.*

- Ted Lee Eubanks

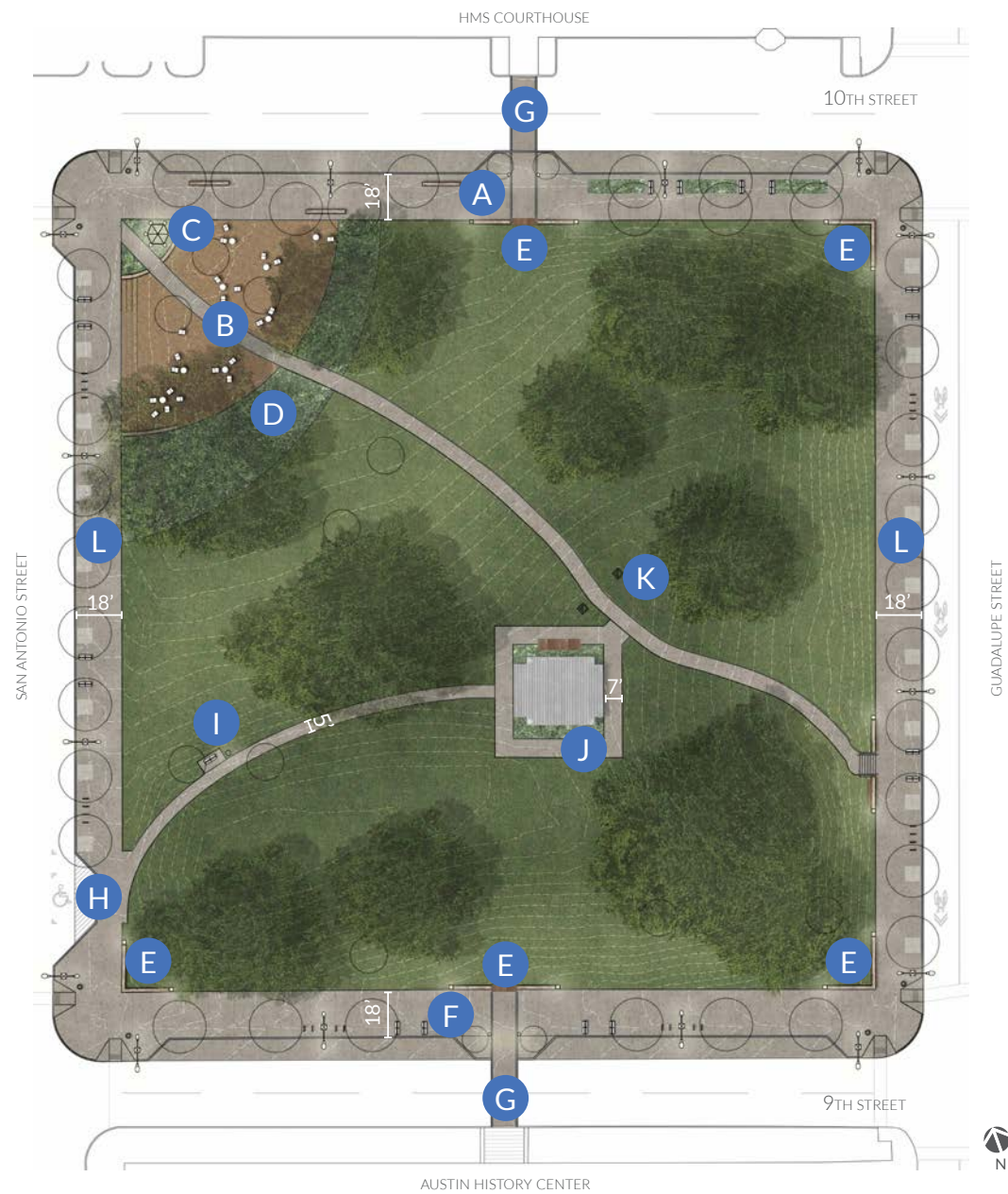
# PRELIMINARY PLAN

## SYMBOLS

-  Street Light
-  Bike Rack
-  Bench
-  Trash Can
-  Cafe Table + Chairs
-  Sharrow Lane
-  Existing Young Tree
-  Proposed Tree
-  Formal Planting Bed
-  Interpretive Signage
-  Silva Cell

## LEGEND

- A** Civic Promenade
- B** Community Space
- C** Relocated Moon Tower
- D** Planting Band
- E** Viewing Platform
- F** 9th Street Promenade
- G** Mid-block Crossing
- H** ADA Walk + Parking Zone
- I** Bench Resting Area
- J** Perimeter Walk + Wheelchair Lift
- K** Area Drains
- L** Perimeter Streetscape





THANK YOU