



# City of Austin

## Highland Neighborhood Park & Reznicek Fields Master Plan

Public Meeting #3  
March 23, 2016

# Master Plan Timeline

September, 2015 to Present – Collected Site Information and Created Site Analysis and Site Context Maps.  
Held Focus Group meetings with City Staff, Technical Advisory Committee,  
University Hills Optimist Club and Friends of Highland Neighborhood Park.

November 17, 2015 – Public Meeting #1, Gather Input on Park Desires and Concerns.

November, 2015 to February, 2016 – Analyze Data Gathered and Prepare Preliminary Master Plan Concepts.

February 10, 2016 – Public Meeting #2 – Present Preliminary Master Plan Concepts and Receive Input.

February, 2016 to March, 2016 – Prepare Draft Final Master Plan.

**March 23, 2016 – Public Meeting #3 – Present Draft Final Master Plan and Receive Input.**

**March 2016 to May 2016 – Prepare Final Master Plan and Master Plan Report.**

**May 2016 – Present Draft Master Plan to Land, Facilities and Programs Committee and Parks and Recreation Board**

**June 2016 – Deliver Final Master Plan and Master Plan Report to City of Austin.**

## Tonight's Agenda

- Meeting #2 Survey Results
- Present Revised Park Master Plan
- Revised Park Program
- Questions & Answers

## Preliminary Master Plan Concepts



Concept A



Concept B

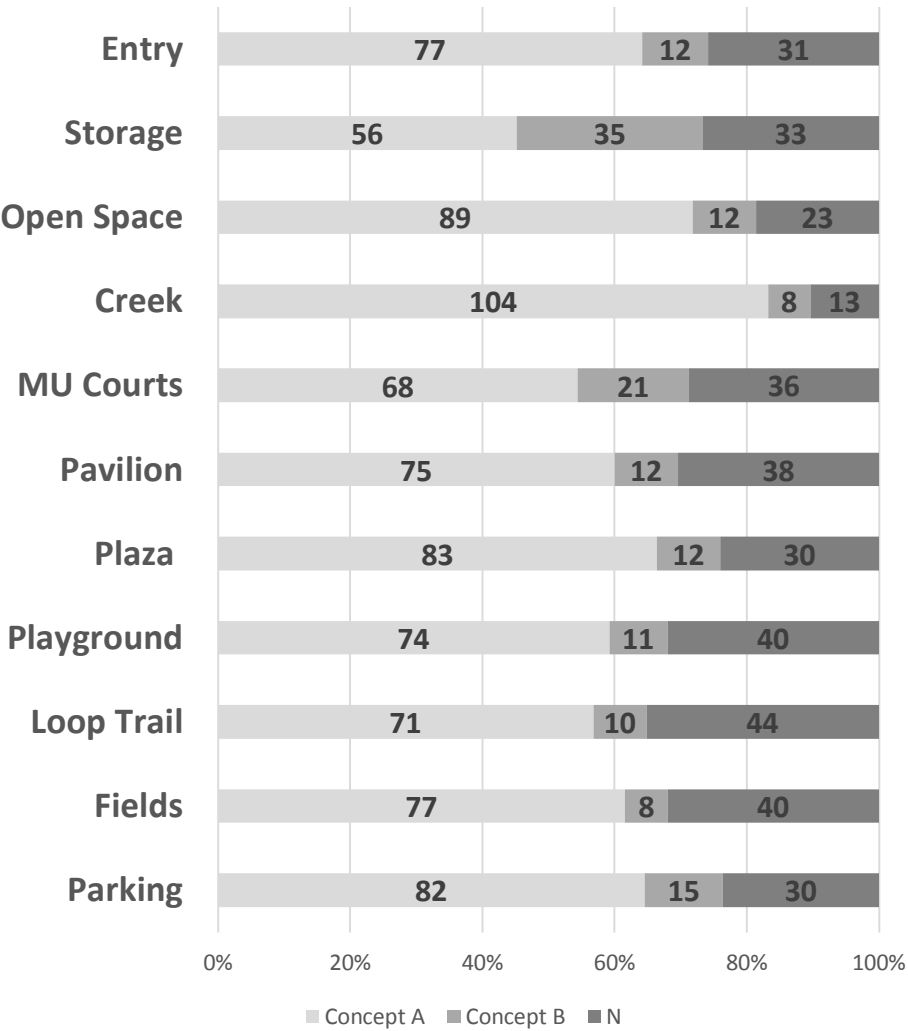


# Preliminary Master Plan Concepts



Concept A

## Station #1: Concept Options



# Preliminary Master Plan Concepts



Concept A



Concept B



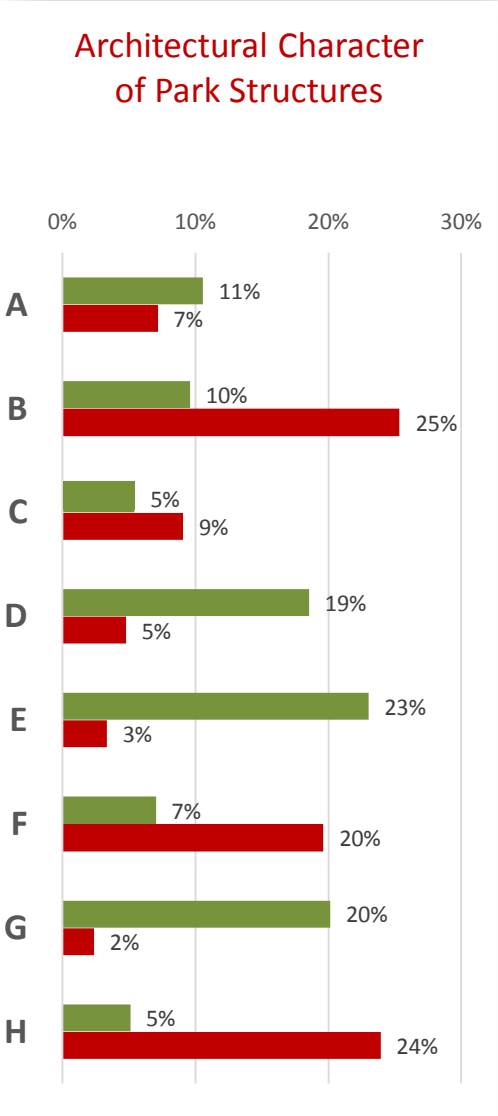
# Additional Feedback



Concept A

- Verify adequacy of playground
- Parking concerns
- Green Stormwater Infrastructure
- Improve compatibility with neighbors at parking and sport courts
- Further study North Greenbelt

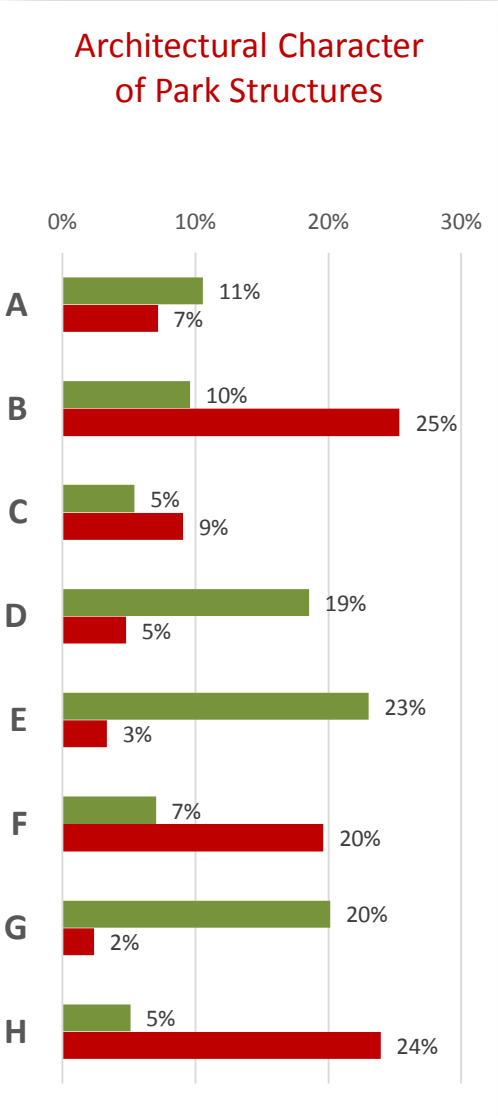
# Character Review



Most Positive Results

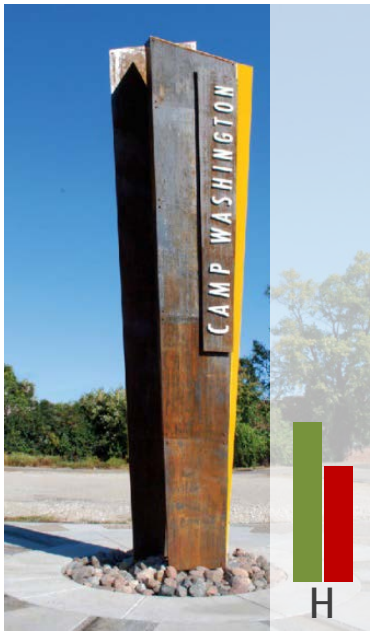
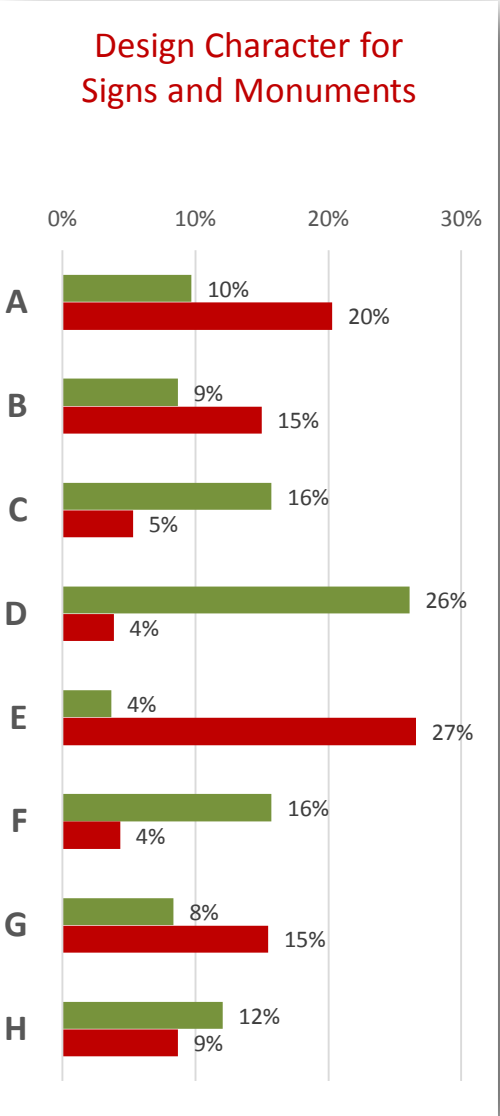


# Character Review



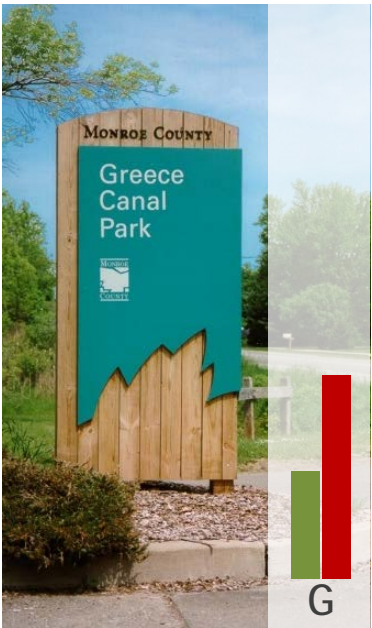
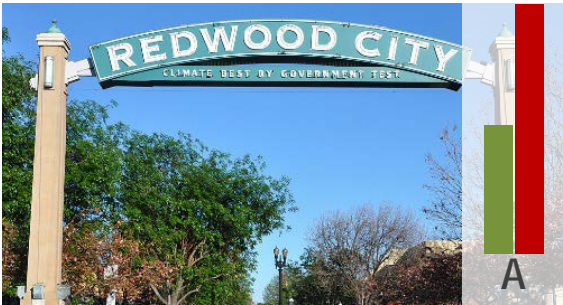
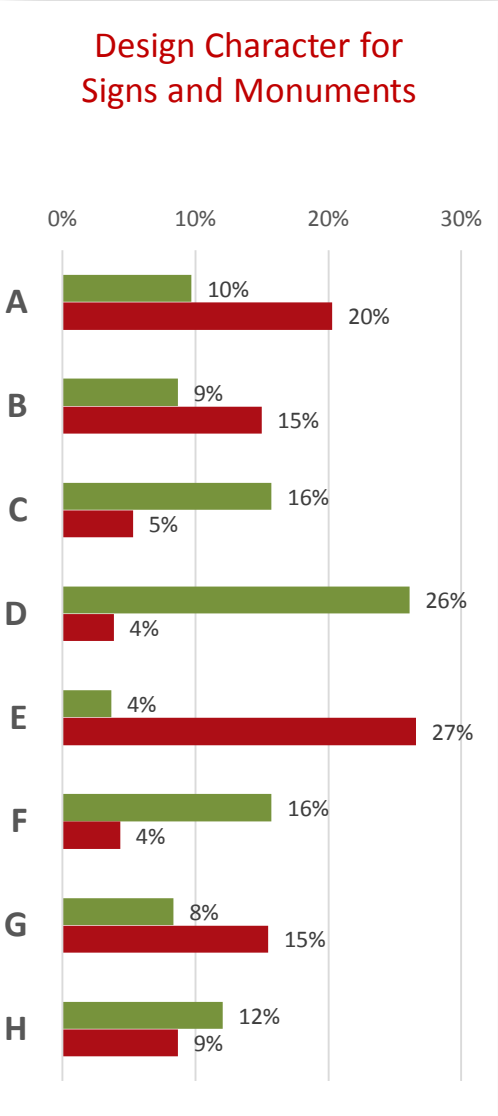
Least Positive Results

# Character Review



Most Positive Results

# Character Review

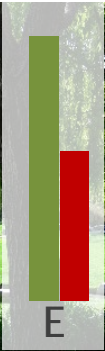
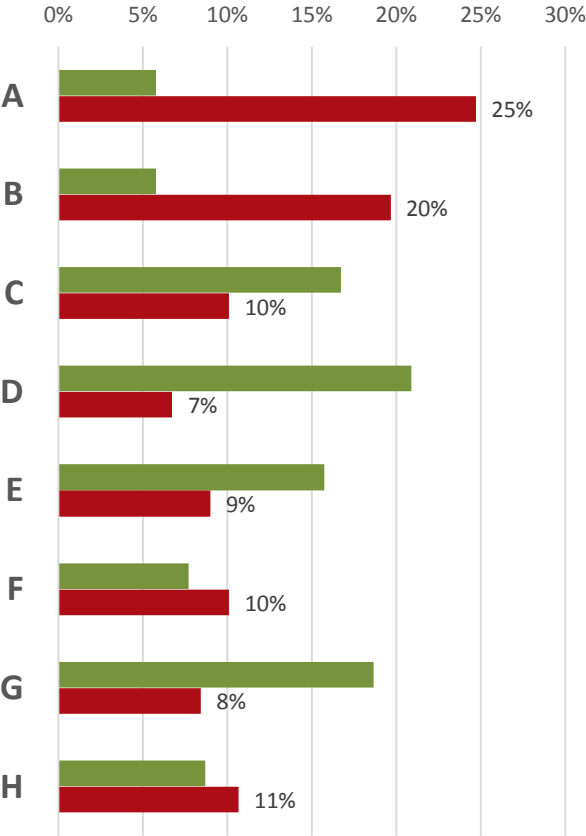


Least Positive Results



# Character Review

Design Characters for  
Landscape Elements

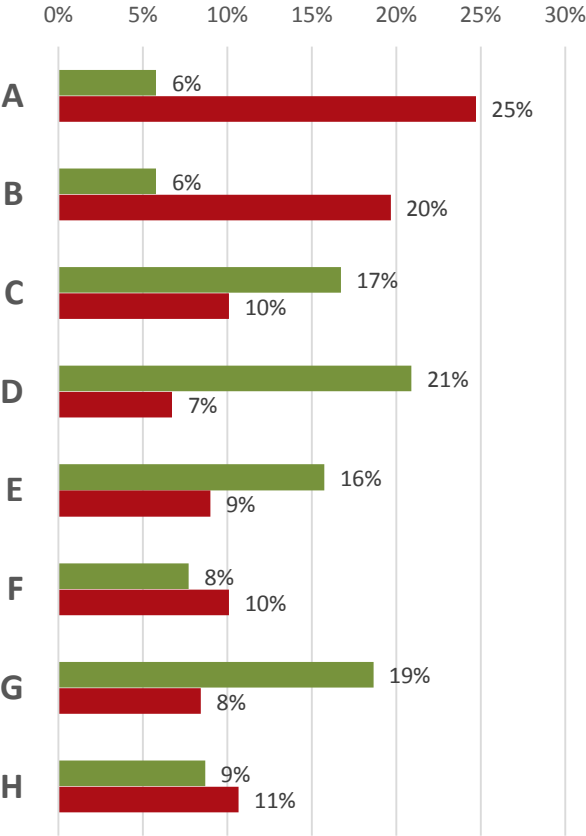


Most Positive Results



# Character Review

Design Characters for  
Landscape Elements



Least Positive Results

# Character Review



Most Positive



# Character Review



Most Polarizing



# Character Review



Least Positive



# Character Review



Least Interesting

# Revised Master Plan Context Map

North Green Belt

Highland Neighborhood Park

South Green Belt





# Highland Neighborhood Park

North Green Belt

Highland Neighborhood Park

South Green Belt

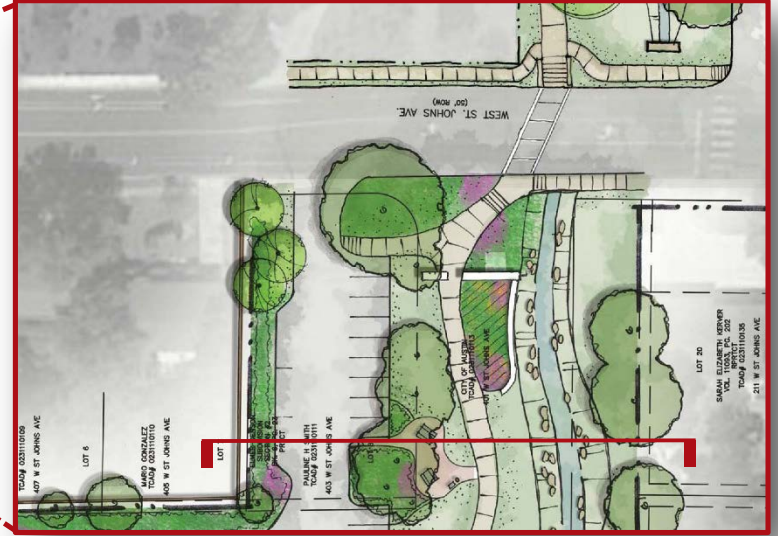


# Highland Neighborhood Park





# Highland Neighborhood Park



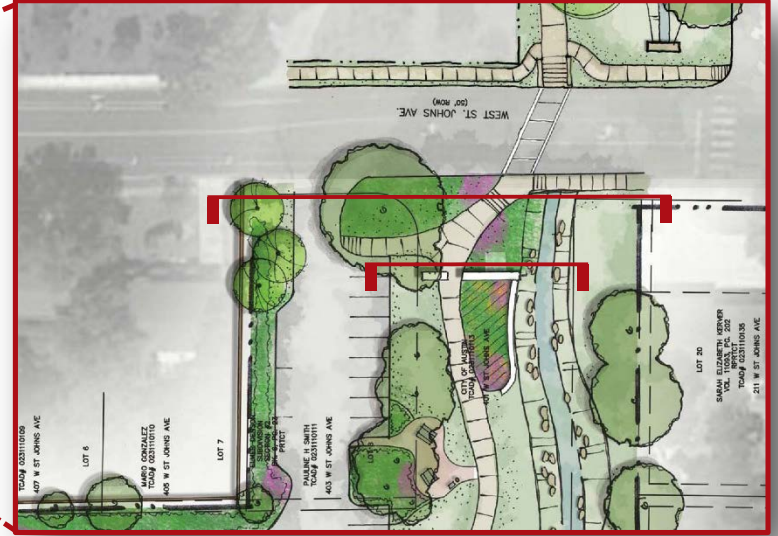
# Highland Neighborhood Park



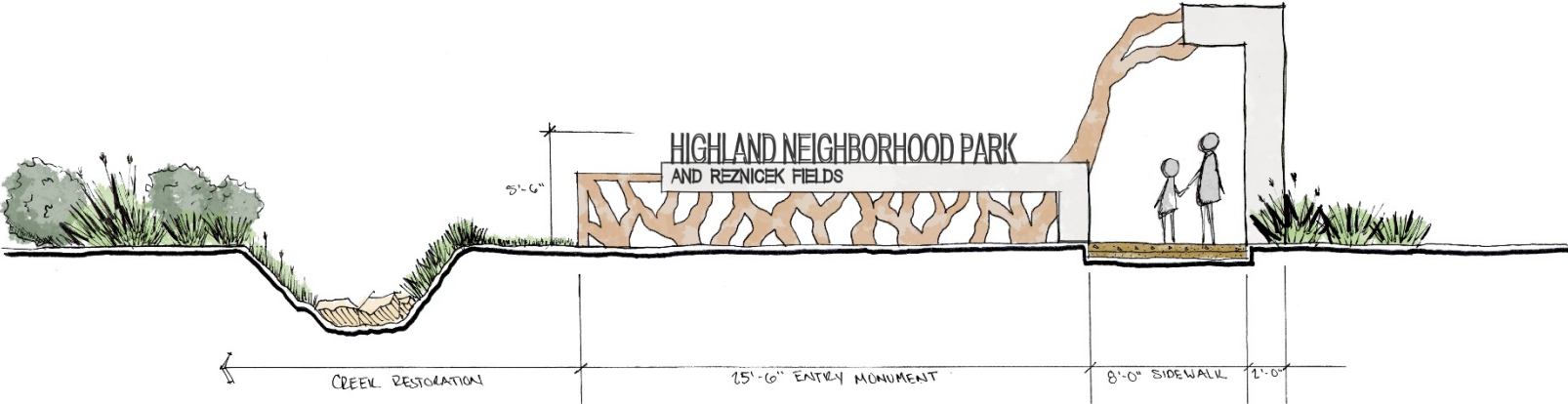
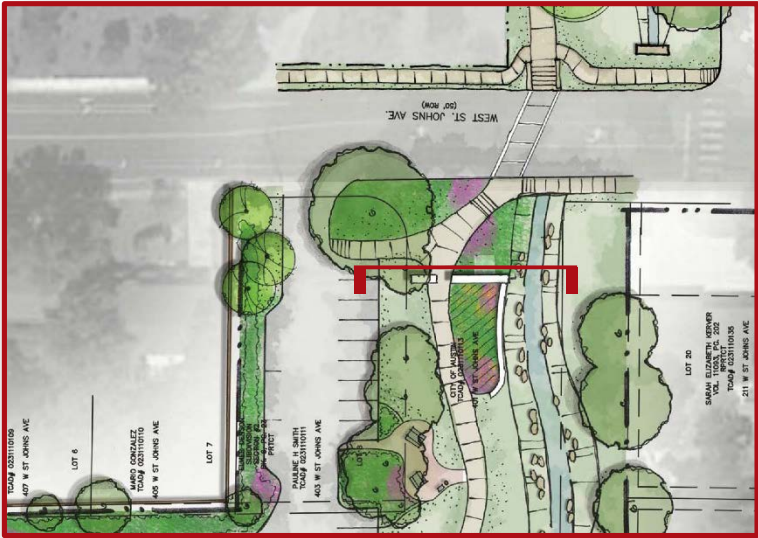
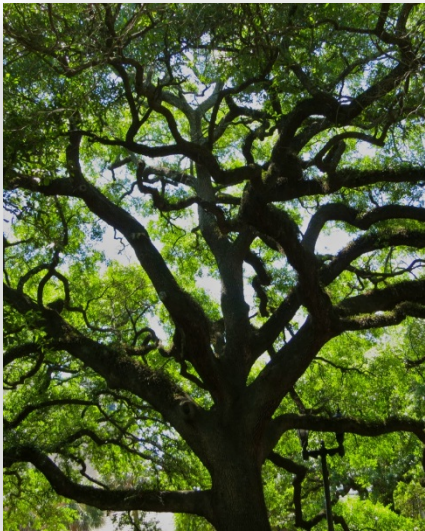
Park Entry



# Entry Monument Options



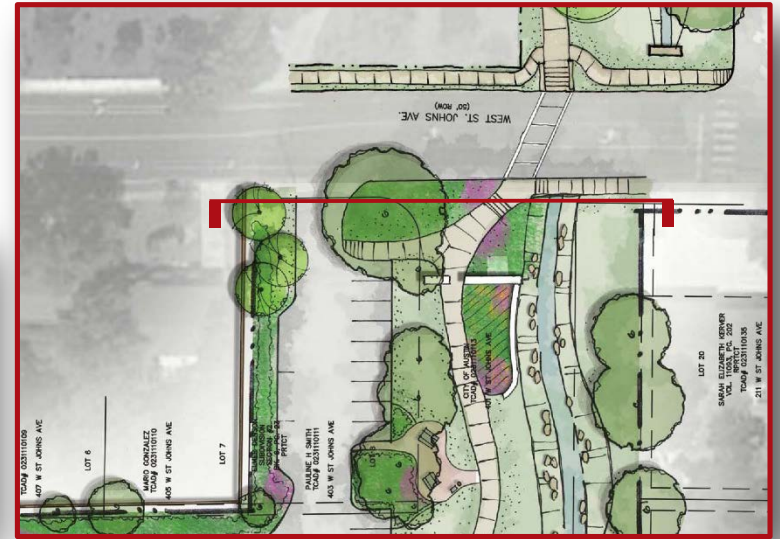
# Entry Monument - Option A



Option A

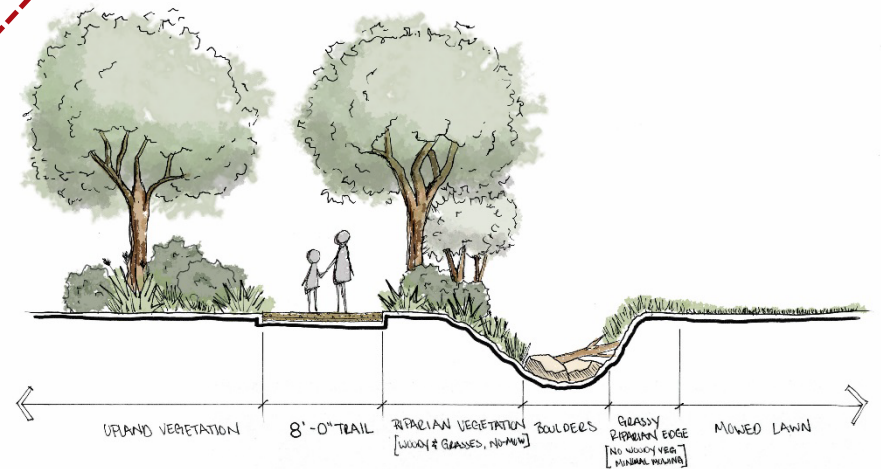


# Entry Monument - Option B



Option B

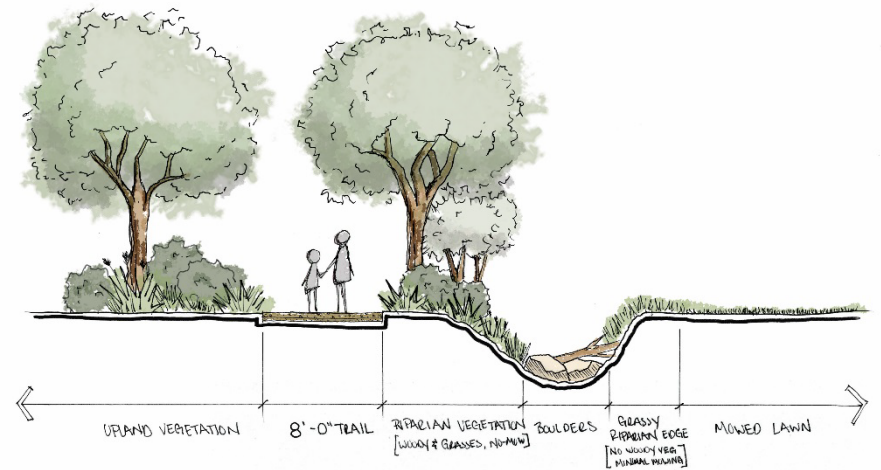
# Highland Neighborhood Park



Creek Restoration



# Highland Neighborhood Park



Creek Restoration

# Highland Neighborhood Park



Central Spine



# Highland Neighborhood Park



Central Spine

# Rain Gardens





# Multi-Use Fields Temporary Fencing





# On Site Loop Trails





# Playground



## 2-5 Playground



1,900 SF





## 5-12 Playground



6,300 SF



# Sand Play



650 SF





# Nature Play



3,150 SF



# Swing Area



2,290 SF





# Seat Wall



110 LF

# Pavilion



1,750 SF





# Picnic Area



1,500 SF



# Multi-Use Court





# South Greenbelt

North Greenbelt

Highland Neighborhood Park

South Greenbelt

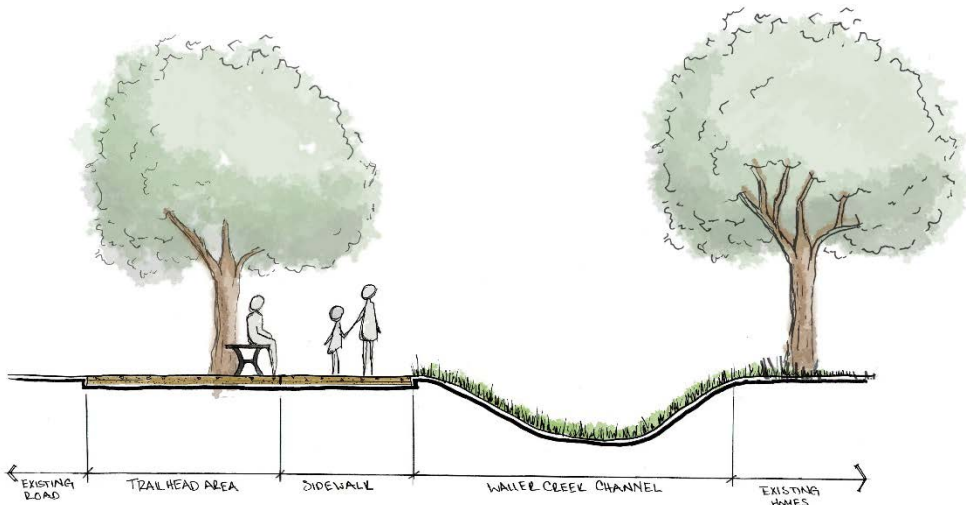


# South Greenbelt





# South Greenbelt Section



South Greenbelt at Trailhead



# North Greenbelt

North Greenbelt

Highland Neighborhood Park

South Greenbelt

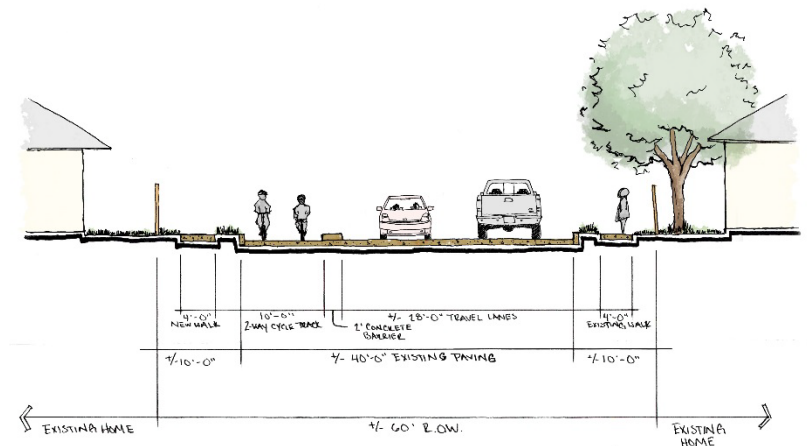




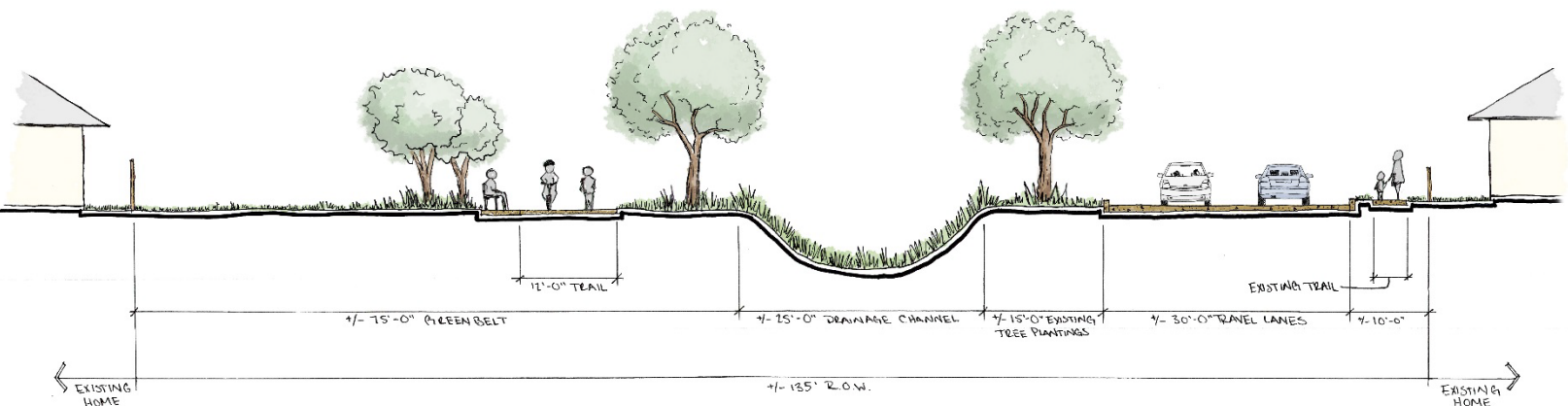
# North Greenbelt



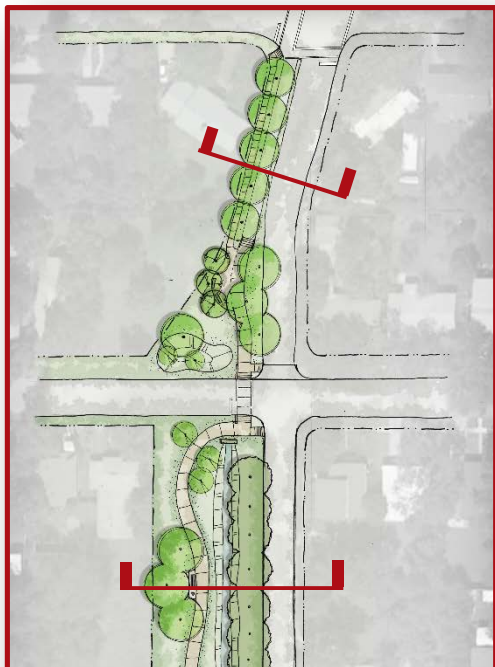
# North Greenbelt Sections



Northcrest Cycle Track



Northcrest Greenbelt





# St. John's Crossing



# Park Design Program

Use	Size
Walking / Running Loop	+/- 12' max
Playground, Ages 2-5	+/- 1,900 SF
Playground, Ages 5-12	+/- 6,300 SF
Playground, Nature Play	+/- 3,150 SF
Playground, Sand Play	+/- 650 SF
Playground, Swing Set Area	+/- 2,290 SF
Restroom	+/- 500 SF
Picnic Pavilion	+/- 1,750 SF
Storage	Renovate Existing, +/- 1,350 SF
Lighting (safety and athletic)	N/A
Open Lawn	1.2 Acre +
Parking	+/- 60 Spaces
Kickball Fields	2 Fields, +/- 1.6 Acres



## Park Design Program

Use	Size
Soccer Field	1 Field, overlapping Kickball
Water Quality Pond	1 Acre
Multi-Use Court	+/- 6,000 SF
Creek Restoration	+/- .65 Acres
Plaza / Central Spine	+/- 7,350 SF
Fitness Equipment	Varies, +/- 150 SF Each
Picnic Areas	+/- 2,600 SF Each

Tonight's Presentation and More Information are available at the Highland Neighborhood Park and Reznicek Fields Master Plan Web Page found on the City of Austin Parks and Recreation Web Site under the Projects Tab.

<http://www.austintexas.gov/department/highland-neighborhood-park-and-reznicek-fields-master-plan>