



City of Austin

Highland Neighborhood Park & Reznicek Fields Master Plan

Public Meeting #2
February 10, 2016

Master Plan Timeline

September, 2015 to Present – Collected Site Information and Created Site Analysis and Site Context Maps.
Held Focus Group meetings with City Staff, Technical Advisory Committee,
University Hills Optimist Club and Friends of Highland Neighborhood Park.

November 17, 2015 – Public Meeting #1, Gather Input on Park Desires and Concerns.

November, 2015 to February, 2016 – Analyze Data Gathered and Prepare Preliminary Master Plan Concepts.

February 10, 2016 – Public Meeting #2 – Present Preliminary Master Plan Concepts and Receive Input.

February, 2016 to March, 2016 – Prepare Draft Final Master Plan.

March 23, 2016 – Public Meeting #3 – Present Draft Final Master Plan and Receive Input.

March 2016 to May 2016 – Prepare Final Master Plan and Master Plan Report.

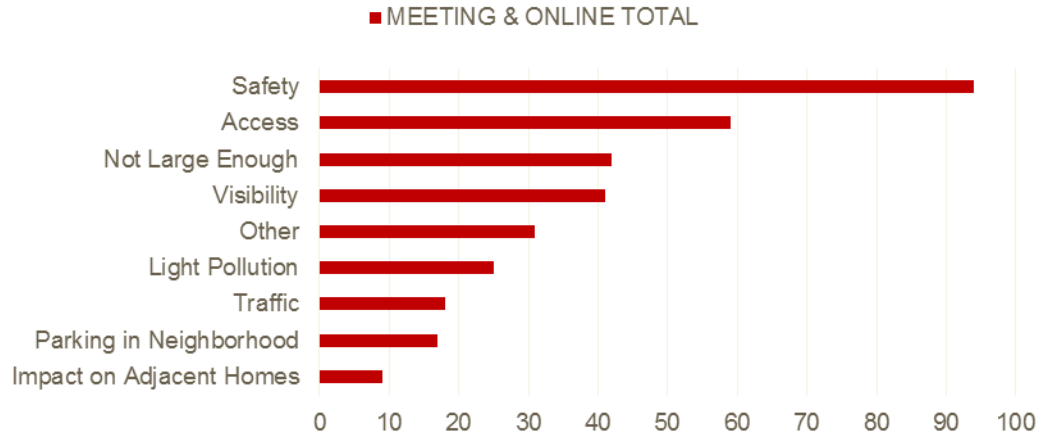
June 2016 – Deliver Final Master Plan and Master Plan Report to City of Austin.

Tonight's Agenda

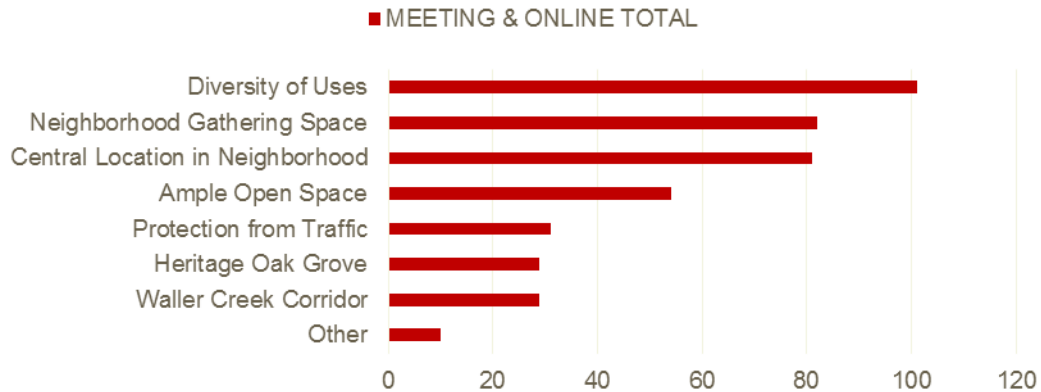
- Meeting #1 Results
- Park Program Review
- Present Two Concepts
- Overview of Survey
- Open House / Conduct Survey

Voting Results

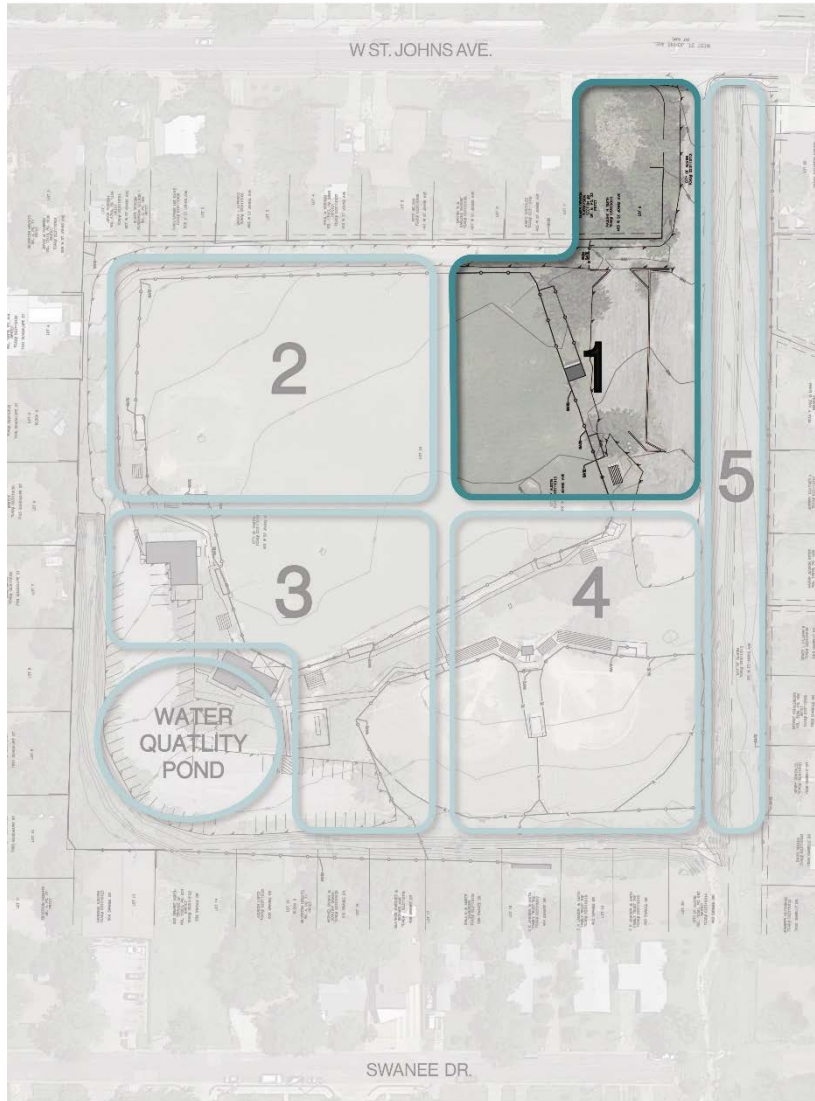
1. What are your biggest concerns for this site?



What are the biggest opportunities for a park in this location?



Voting Results



4. PARKING

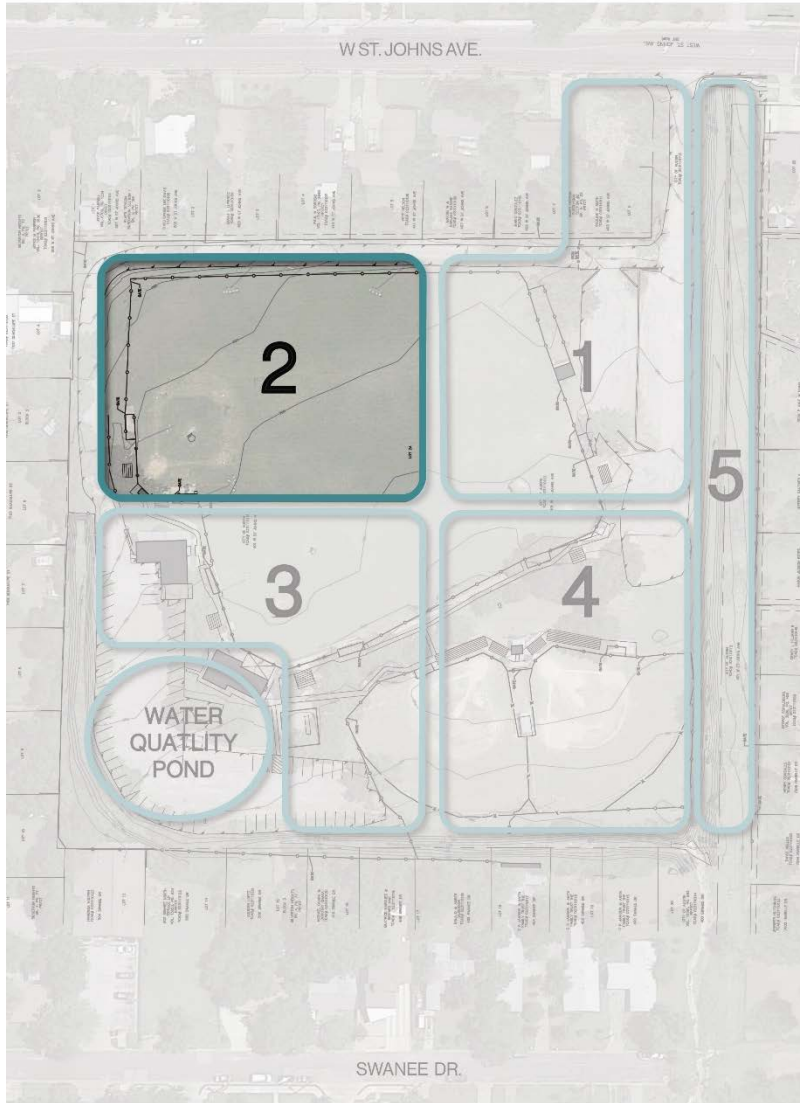


TOTAL

Area 1

Active Uses	17
Passive Uses	23
Sports Fields	8
Parking	77
Other Uses	15

Voting Results



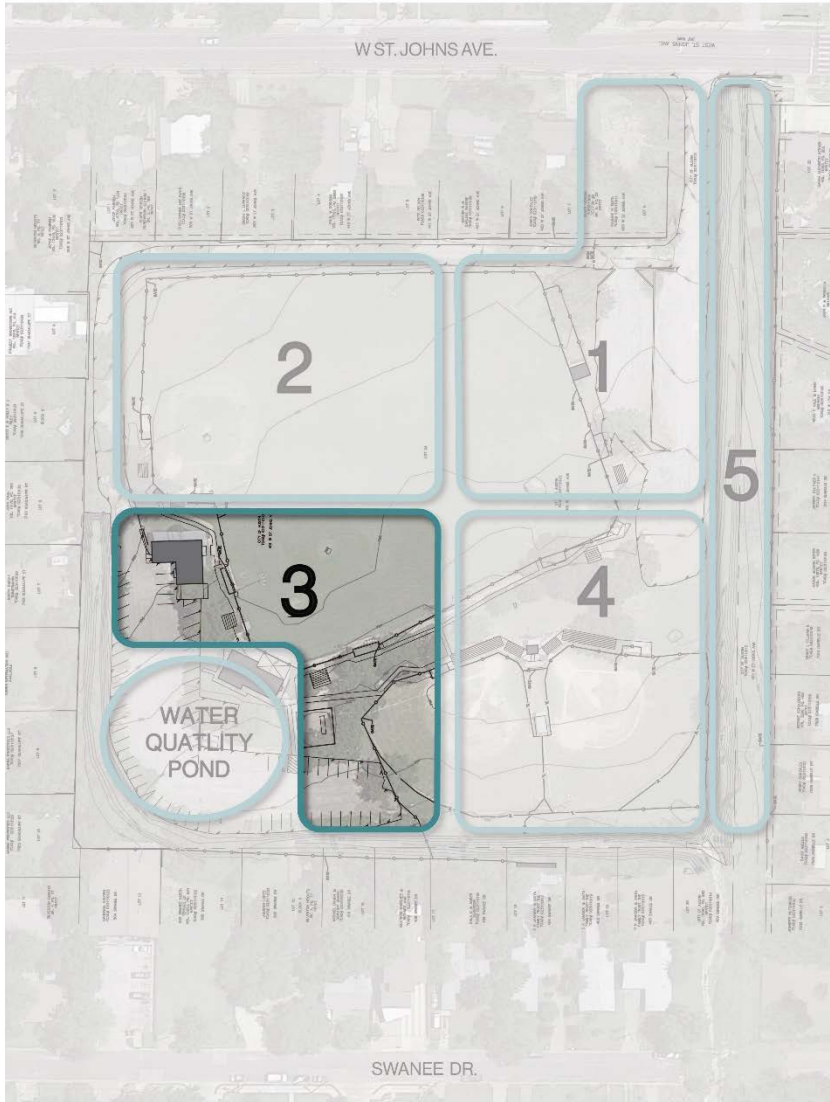
3. SPORTS FIELDS



TOTAL

	Area 2
Active Uses	39
Passive Uses	18
Sports Fields	65
Parking	7
Other Uses	13

Voting Results



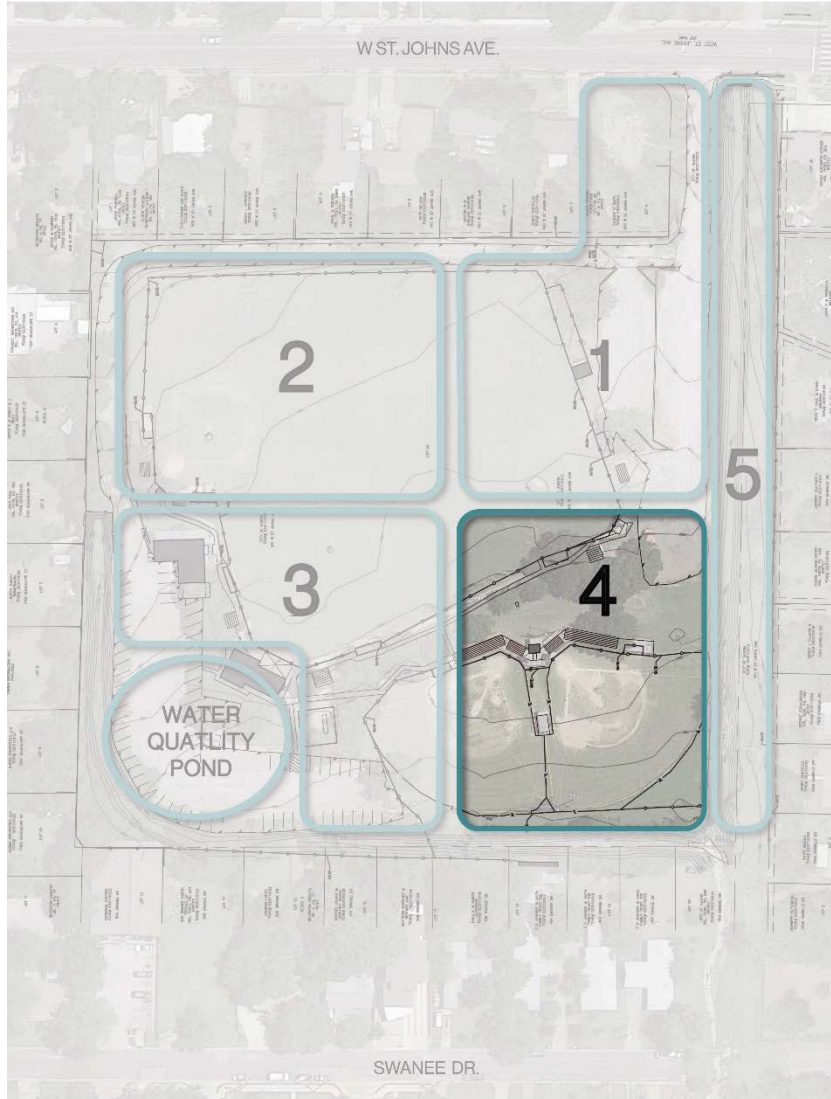
2. PASSIVE USES



TOTAL

	Area 3
Active Uses	29
Passive Uses	58
Sports Fields	23
Parking	8
Other Uses	18

Voting Results



1. ACTIVE USES

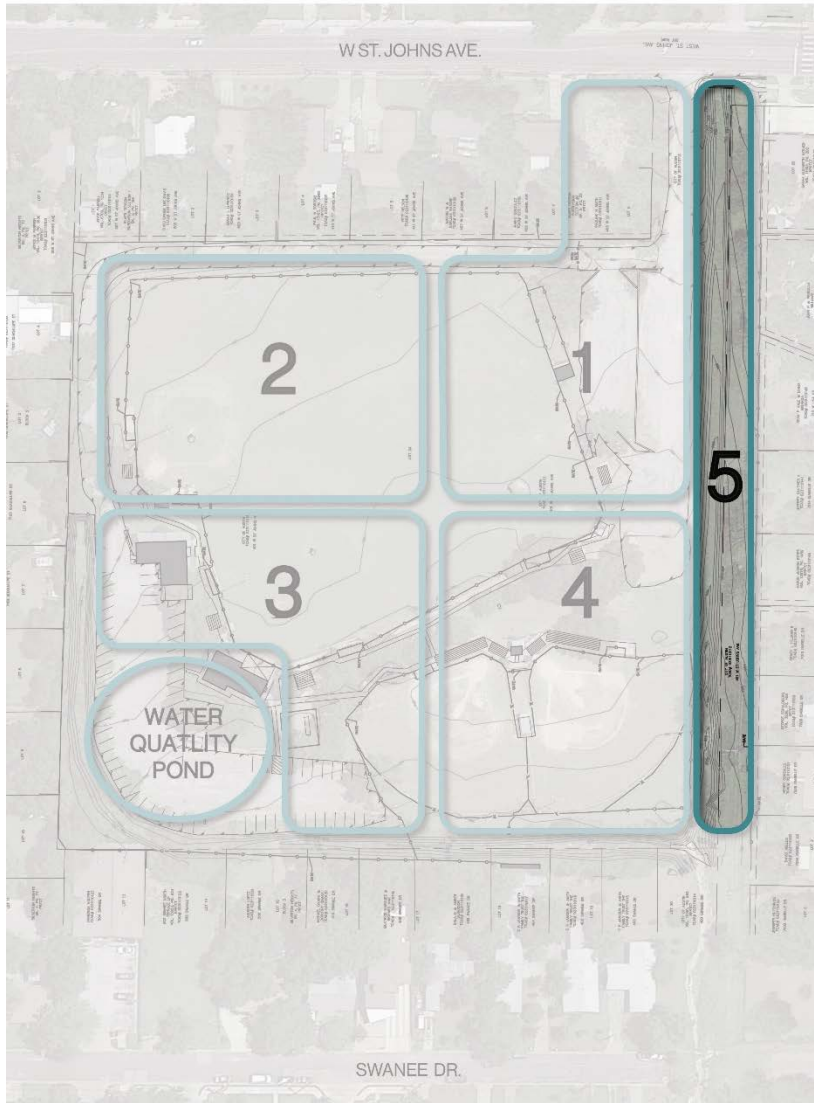


TOTAL

Area 4

Active Uses	48
Passive Uses	29
Sports Fields	38
Parking	7
Other Uses	13

Voting Results



5. OTHER USES



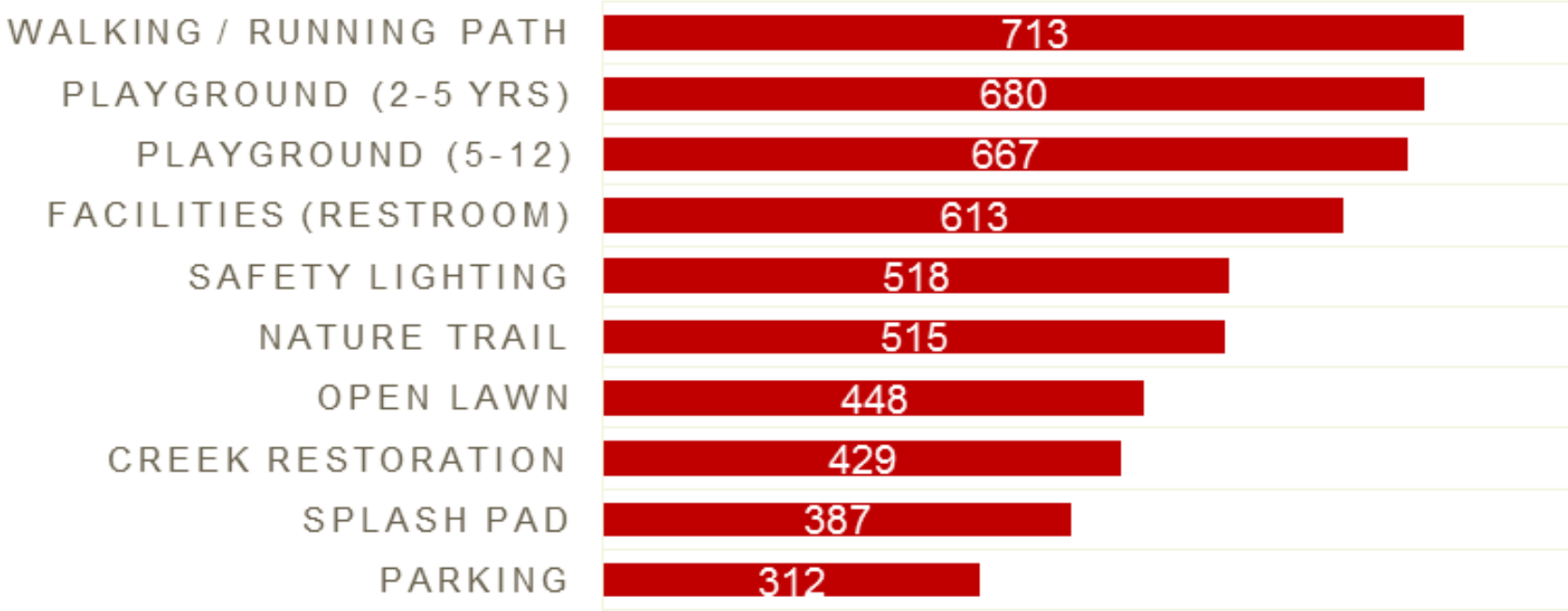
TOTAL

	Area 5
Active Uses	4
Passive Uses	9
Sports Fields	5
Parking	38
Other Uses	72

Voting Results

AMENITY PRIORITIZATION

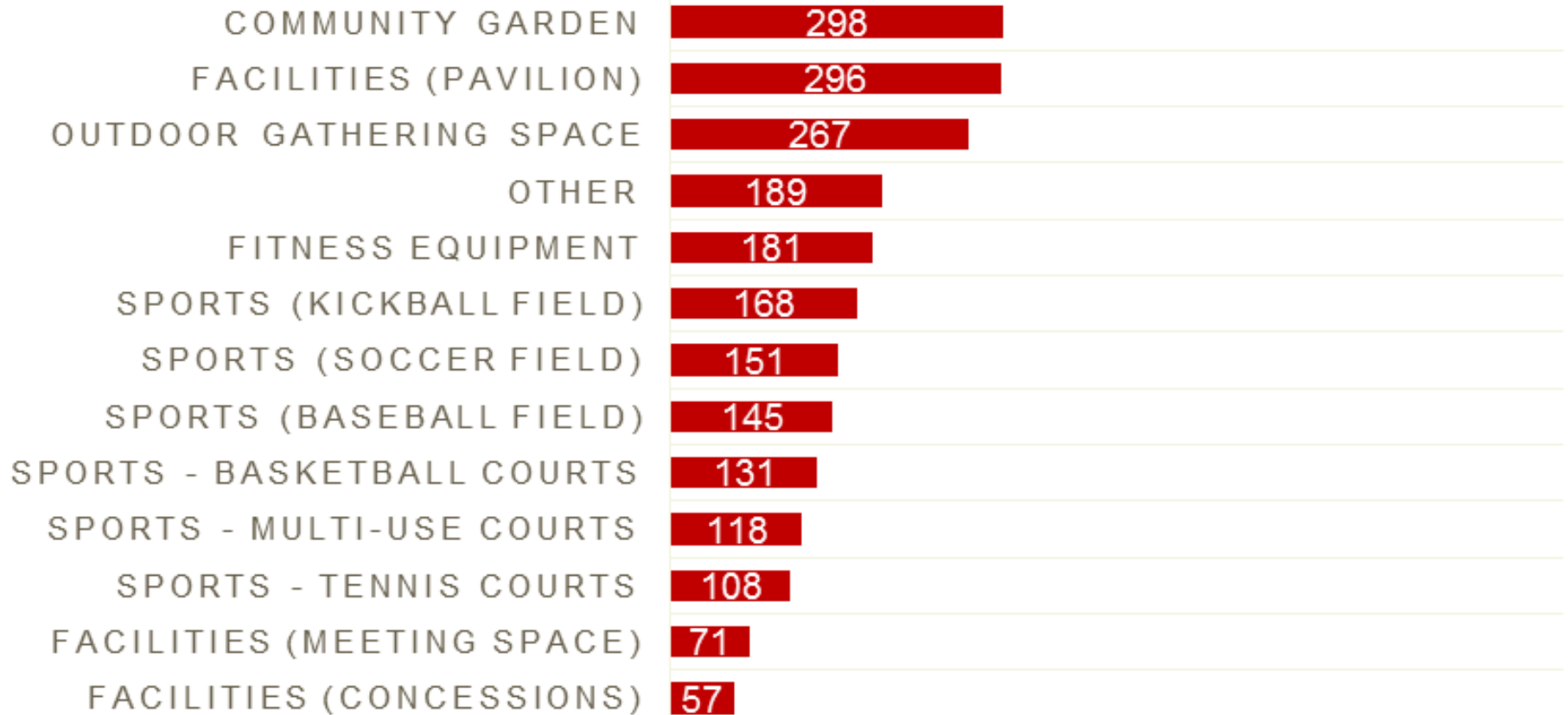
■ MEETING & ONLINE TOTAL



Voting Results

AMENITY PRIORITIZATION

■ MEETING & ONLINE TOTAL



Park Design Program – Top Priorities

Use	Size
Walking / Running Loop	+/-12' max
Playground, Ages 2-5	4-6K SF
Playground, Ages 5-12	6-8K SF
Restroom	+/- 600 SF
Picnic Pavilion	+/- 1K SF
Storage	+/- 250 SF
Lighting (safety and athletic)	N/A
Open Lawn	1 Acre +
Parking	+/- 60 Spaces
Kickball Fields	2 Fields, 1.3 Acres
Soccer Field	1 Field, overlapping Kickball
Water Quality Pond	1 Acre

Park Design Program – Secondary Priorities

Use	Size
Secondary Picnic Pavilion	+/- 300 SF
Multi-Use Court	+/- 7,500 SF
Creek Restoration	+/- .8 Acres
Plaza / Outdoor Gathering	5-10K SF, May overlap
Fitness Equipment	Varies
Additional Picnic Areas	+/- 250 SF Each

Park Design Program – Excluded Uses

Use
Splash Pad
Community Garden
Dedicated Basketball Courts
Dedicated Tennis Courts
Baseball Fields
Enclosed Meeting Room
Concession Stand

Preliminary Master Plan Context Map



Preliminary Master Plan Context Map



Preliminary Master Plan Context Map



Preliminary Master Plan Concept A



Preliminary Master Plan Concept B



Concept Comparison



Concept A

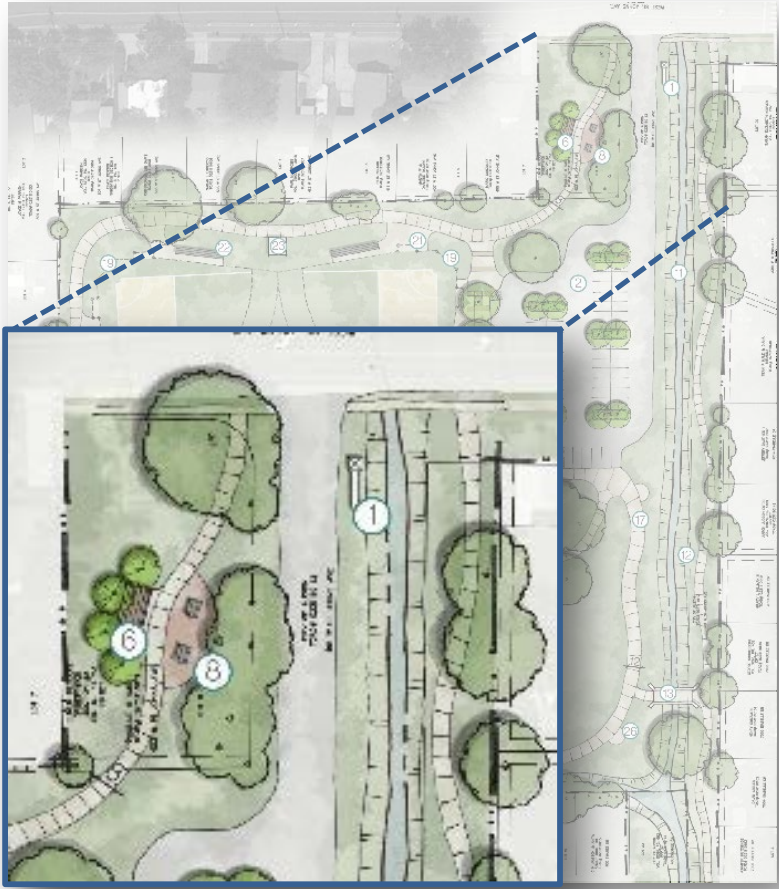


Concept B

Park Entry



Concept A



Concept B

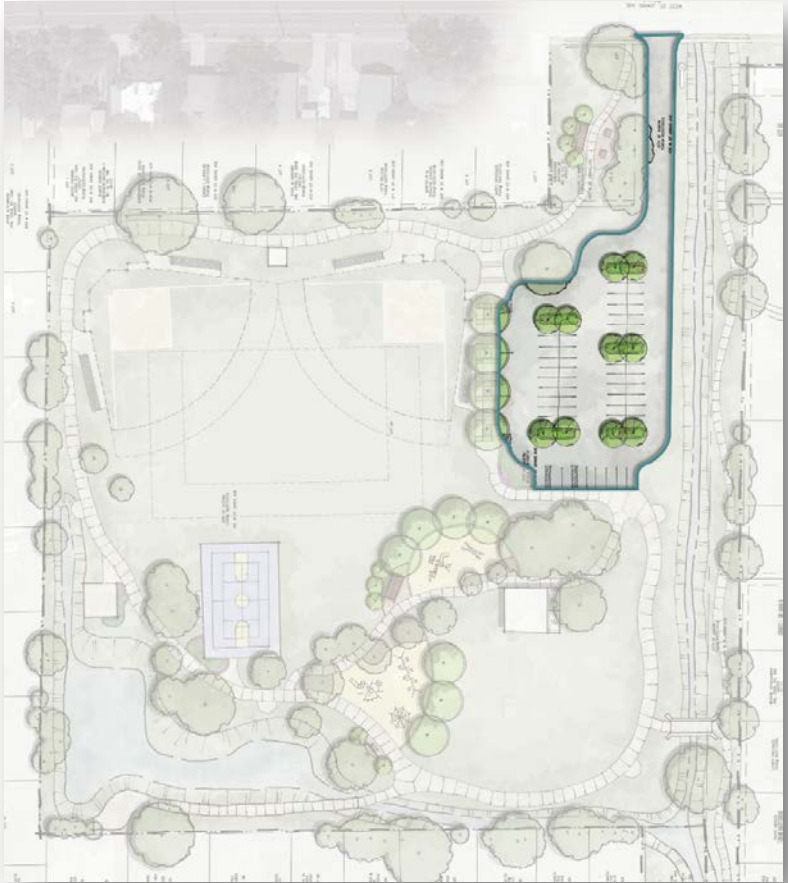
Park Entry Monumentation Examples



Parking Lots



Concept A



Concept B

Multi-Use Fields Orientation Options



Concept A



Concept B

Multi-Use Field Examples



Field Storage Options



Concept A



Concept B

Plaza/Food Truck Options



Concept A



Concept B

Plaza/Food Truck Examples



Playground and Pavilion Options

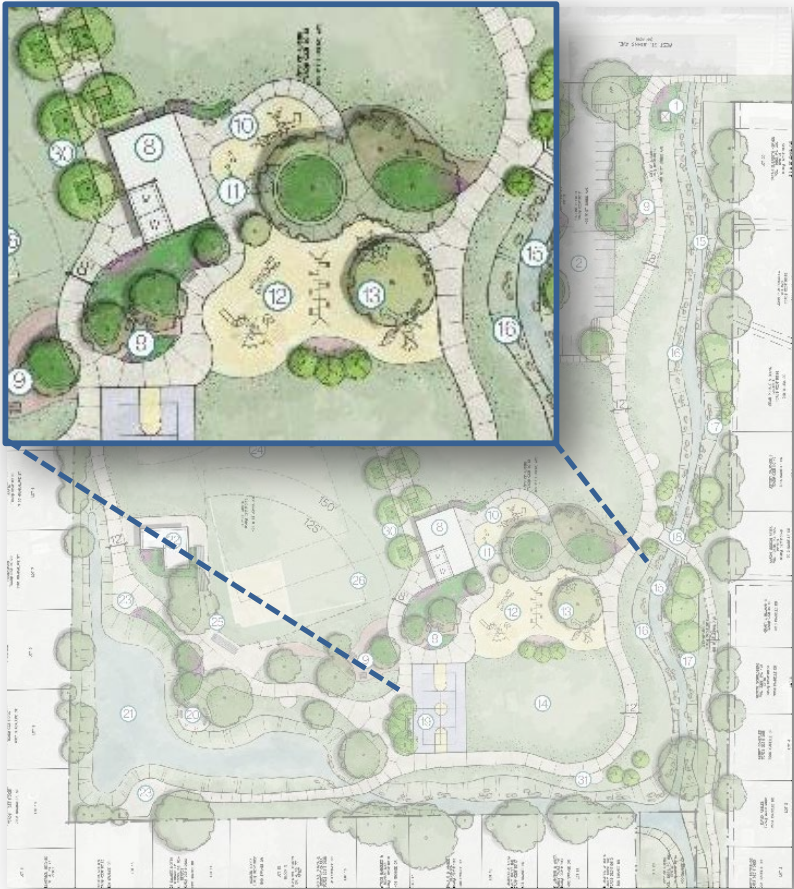


Concept A



Concept B

Playground and Pavilion Options



Concept A



Concept B

Playground and Pavilion Examples



Public Open Space Location Options



Concept A



Concept B

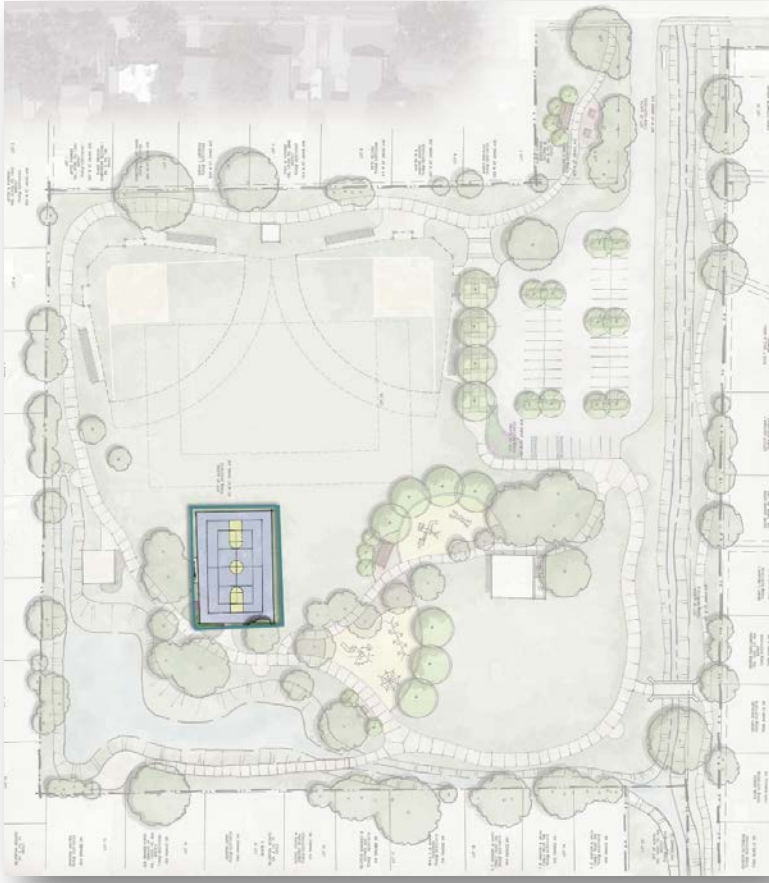
Public Open Space Examples



Multi-Use Court Options



Concept A



Concept B

Multi-Use Court Examples



Loop Trail Options



Concept A



Concept B

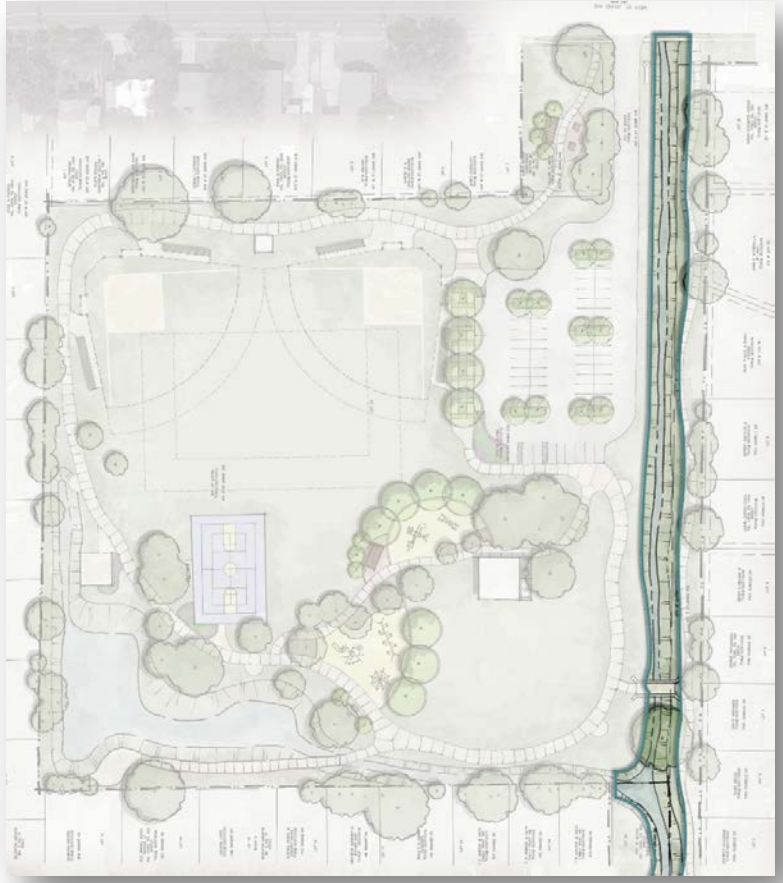
Loop Trail Examples



Creek Restoration Options



Concept A



Concept B

Creek Restoration Examples



Concept Comparison



Concept A



Concept B

Playground Character



A.



B.



C.



D.



E.



F.



G.



H.



I.



J.



K.



L.

HIGHLAND NEIGHBORHOOD PARK & REZNICEK FIELDS
PLAYGROUND CHARACTER

FEBRUARY 10, 2016



M.



N.



O.



P.



Q.



R.



S.



T.



U.



V.



W.



X.

HIGHLAND NEIGHBORHOOD PARK & REZNICEK FIELDS
PLAYGROUND CHARACTER

FEBRUARY 10, 2016

Park Character



A.



B.



C.



D.



E.



F.



G.



H.

HIGHLAND NEIGHBORHOOD PARK & REZNICEK FIELDS
PARK CHARACTER - PAVILION ARCHITECTURE

FEBRUARY 10, 2016



A.



B.



C.



D.



E.



F.



G.



H.

HIGHLAND NEIGHBORHOOD PARK & REZNICEK FIELDS
PARK CHARACTER - ENTRY SIGNAGE

FEBRUARY 10, 2016

Park Character



A.



B.



C.



D.



E.



F.



G.



H.

HIGHLAND NEIGHBORHOOD PARK & REZNICEK FIELDS
PARK CHARACTER - LANDSCAPE

FEBRUARY 10, 2016

Tonight's Presentation, Survey and More Information are available at the Highland Neighborhood Park and Reznicek Fields Master Plan Web Page found on the City of Austin Parks and Recreation Web Site under the Projects Tab.

<http://www.austintexas.gov/department/highland-neighborhood-park-and-reznicek-fields-master-plan>
