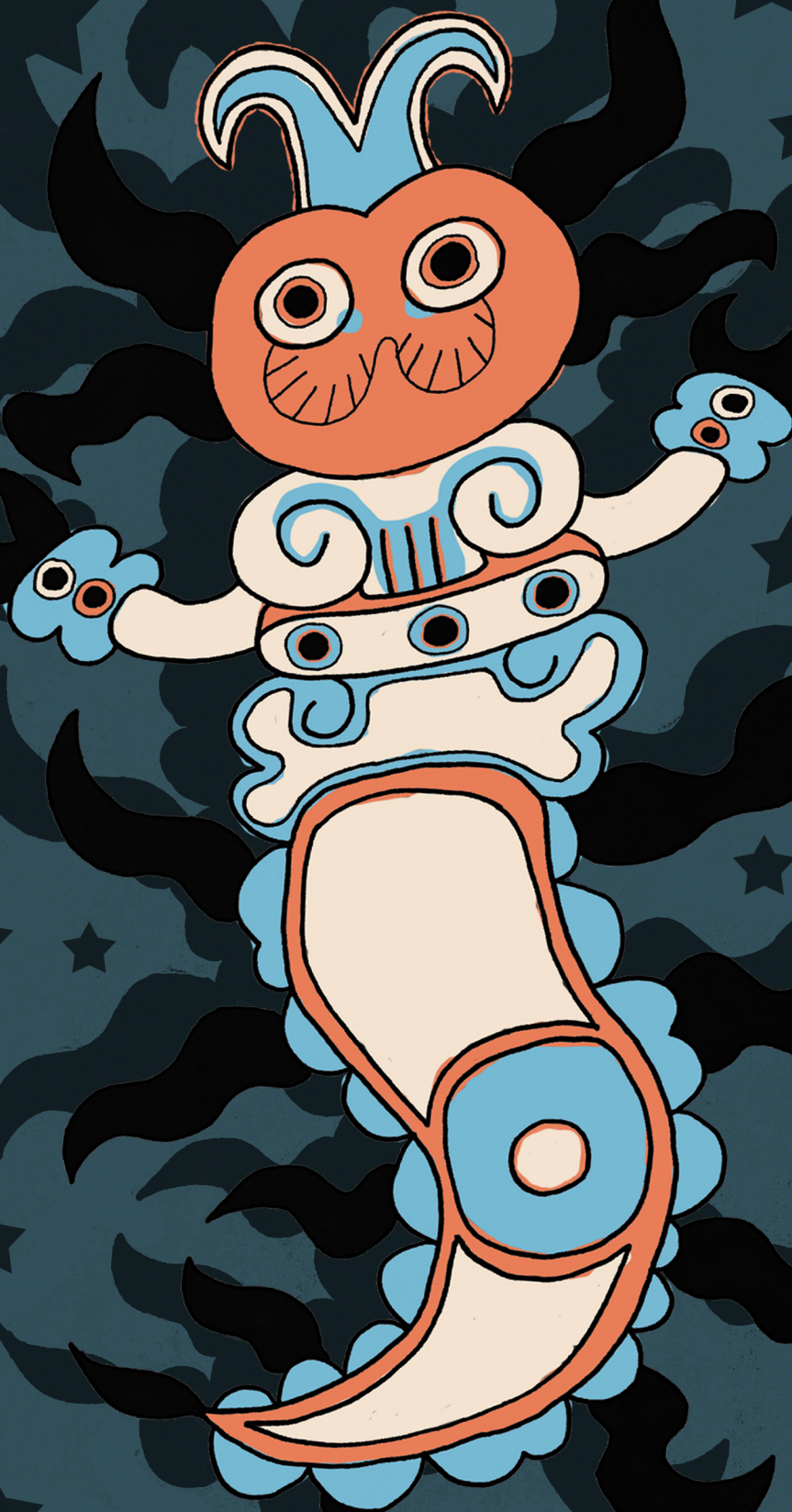


F  
I  
G  
U  
R  
A  
L  
O

2  
0  
2  
1



IN PERSON!

CALL FOR  
ENTRIES

# FIGÚRALO

## 2021

**Emma S. Barrientos  
Cultural Center**

600 River Street, Austin Texas 78701  
(512) 974-3772

The Emma S. Barrientos Mexican American Cultural Center (ESB-MACC) in affiliation with the Smithsonian Institute are proud to present the 2021 Figuralo, Youth Exhibit. Figuralo 2021 will showcase the exploration of artistic mediums through figurines, figurative images and figurative narratives. Figuralo 2021 will be held in-person at the ESB-MACC and showcased virtually via the Smithsonian Institutes' Learning Lab; meaning all works will be shown in-person and online via the Smithsonian Learning Lab (SLL). This is a wonderful opportunity to have the young artist featured in a major gallery. All young artists are highly encouraged to submit their wonderful creations. Details regarding submissions are below. For more information please visit our website at [MACCaustin.org](http://MACCaustin.org) or contact Lori Navarrete, Culture & Arts Education Specialist at [lori.navarrete@austintexas.gov](mailto:lori.navarrete@austintexas.gov).

### Figúralo Registration & Submission-

#### • How to register artwork to Figural 2021

o Please submit the Figúralo 2021 Registration Form and the image(s) or video/recordings of artwork to [lori.navarrete@austintexas.gov](mailto:lori.navarrete@austintexas.gov) (as an attachment), by 6pm Saturday November 20th, 2021. More specified submission details are below.

o Questions regarding Figúralo 2021 please contact Lori Navarrete, Cultural & Arts Education Specialists at [lori.navarrete@austintexas.gov](mailto:lori.navarrete@austintexas.gov).

•How to submit artwork to Figural 2021 (All work will be exhibited on-site at the ESB-MACC and on the Smithsonian Learning Lab (SLL), below are the special requirements for submitted artwork).

o In-person Artwork drop-off begins Tuesday, November 30 - December 3rd, 2021 from 10am - 6pm. Please drop-off all artwork to the ESB-MACC located at 600 River St., Austin, Texas, 78701

o For all 2-D and 3-D art (paintings, drawing, illustrations, photographs, found art, sculptures, canvas work, etc.) please submit a photo of work from any angle that clearly shows the artwork. Photos can be submitted as a PDF or JPEG file. Artist can submit up to 3 works.

o For all performance artists (musicians, actors, dancers, poets, performance artwork, etc.) please record a 3 - 8 minute video of your work that best represents your art. All videos must be submitted as an Mp4. Artist may chose to submit more that one performance, but it must fit within the 3-8min video.

o For all film makers and digital artists (film directors, animators, etc.) please submit work as an Mp4. Artwork must not exceeded 20mins in length. Artist may chose to submit more that one work, but it must fit within the 20min video.

### Participant Submission Guidelines

Participation Eligibility - Participants must have a strong interest in the Arts and be between the ages of 6-19.

### Artwork Categories, but not limited to -

- Painting / Oil Pastels
- Illustration / cartooning / stop motion
- Photography
- Sculpture (3-models, clay, papier-mache)
- Video imaging / Films(a work of visual art that combines more than one medium)
- Sound mixing clips / music
- Performance Art (musicians, actors, dancers, poets, performance artwork, etc.)

### Artwork Requirements-

- **Please complete entry form for each artwork submitted (very important)**
- 3 artworks per 2-D and 3-D artists (PDF or JPEG)
- Performance Artists 3 - 8 minute recorded video (Mp4)
- Film makers and digital artist 5 - 20min Mp4
- Entries must be the original work from the young artist
- Please have each piece display ready (each piece should be ready for install)
- There is no size limit to works entered
- All artworks must be instal ready, the ESB-MACC will not mix, edit, complete any artist's work. All parts of the artworks is representative of the artist creativity.

### Liability -

• ESB-MACC will make every attempt to preserve, secure and protect each artwork entry submitted, however ESB-MACC cannot be held responsible for damages, loss of art entries, or the cancellation of Figúralo 2021, Annual Youth Exhibit due to unforeseen circumstances. The ESB-MACC reserves the right to reproduce and publish images of entries for official publicity of event.

### Exhibit Opening

• Exhibit Opening will be held Saturday, December 11, 2021 from 2 - 6pm in the Sam Coronado Gallery at the Emma S. Barrientos Mexican American Cultural Center.

• Our virtual exhibit will go live on Saturday, December 11, 2021 at 2pm via the Smithsonian Institute's Learning Lab.

The City of Austin is proud to comply with The Americans With Disabilities Act. If you require assistance for participation in our programs or use of our facilities, please call (512) 974-3914.

La Ciudad de Austin esta comprometida al Acta de Americanos Incapacitados. Si requiere asistencia para participar en nuestros programas por favor llame al telefono numero (512) 974-3914.



Emma S. Barrientos  
Mexican American  
Cultural Center

