



Interactive 2016 Zilker Park Area Schedules **(ctrl+click on the DATE RANGE to view the appropriate map)**

Austin City Limits Festival

- **September 19 – 29**
- **September 30 – October 2 Event Days**
- **October 3 - 6**
- **October 7 - 9 Event Days**
- **October 10 – 14**
- **October 15 – 21**

Open Period

- **October 22 – 30**

Trail of Lights

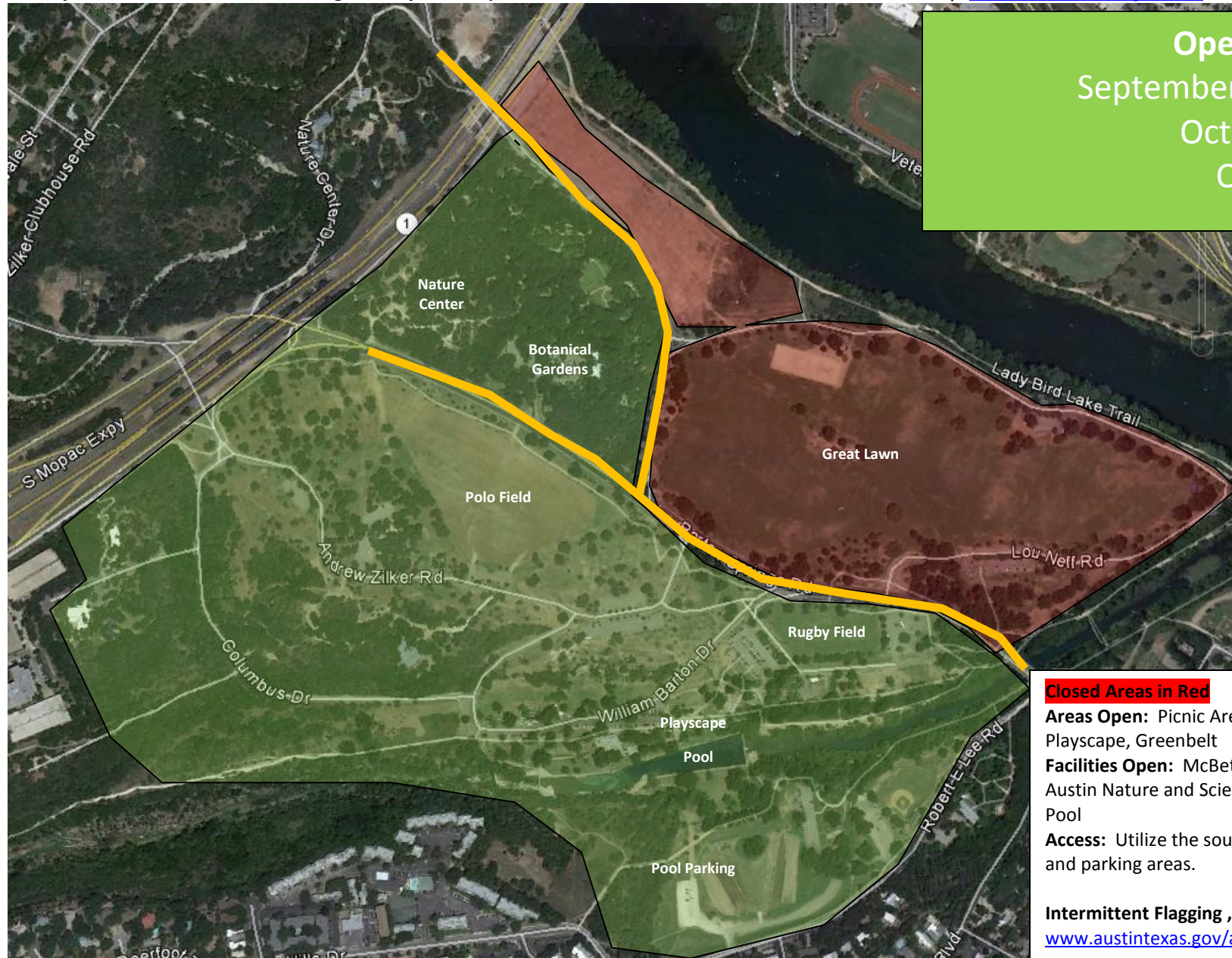
- **October 31 – November 16**
- **November 17 – December 23**
 - (Event Days December 3 (fun run), and 10-23 are within this period.)

2016 Zilker Park Area OPEN Area Schedule at a Glance

All subject to weather conditions during the subject time period.

ACL Music Festival (Festival Days Sept 30 – Oct 2, and 7-9)

Road closures vary. www.austintexas.gov/ace for detailed information.



Open Areas (green)
September 19 – 29, and
October 3-6, and
October 10-14

Closed Areas in Red
Areas Open: Picnic Areas, Rugby Field, Polo Field, Playscape, Greenbelt
Facilities Open: McBeth, Zilker Botanical Garden, Austin Nature and Science Center, Barton Springs Pool
Access: Utilize the south side main park entrances and parking areas.

Intermittent Flagging , Lane/Road Closures:
www.austintexas.gov/ace **see orange lines**

Expect higher pedestrian/vehicular traffic in area.

2016 Zilker Park Area OPEN Area Schedule at a Glance

All subject to weather conditions during the subject time period.

ACL Music Festival (Festival Days Sept 30 – Oct 2, and 7-9)

Road closures vary. www.austintexas.gov/ace for detailed information.



Open Areas (green)
Event Days
Sept 30 – Oct 1, &
Oct 7-9

Closed Areas in Red

Areas Open: Polo Field, Playscape, Greenbelt (walk-in access only)

Facilities Open: Barton Springs Pool (drive in via Lamar)

Access: Pool general parking at south gate lot via Lamar. ADA access via Mopac, or new south gate lot.

Full Road Closures Barton Springs and Stratford:

www.austintexas.gov/ace see red line

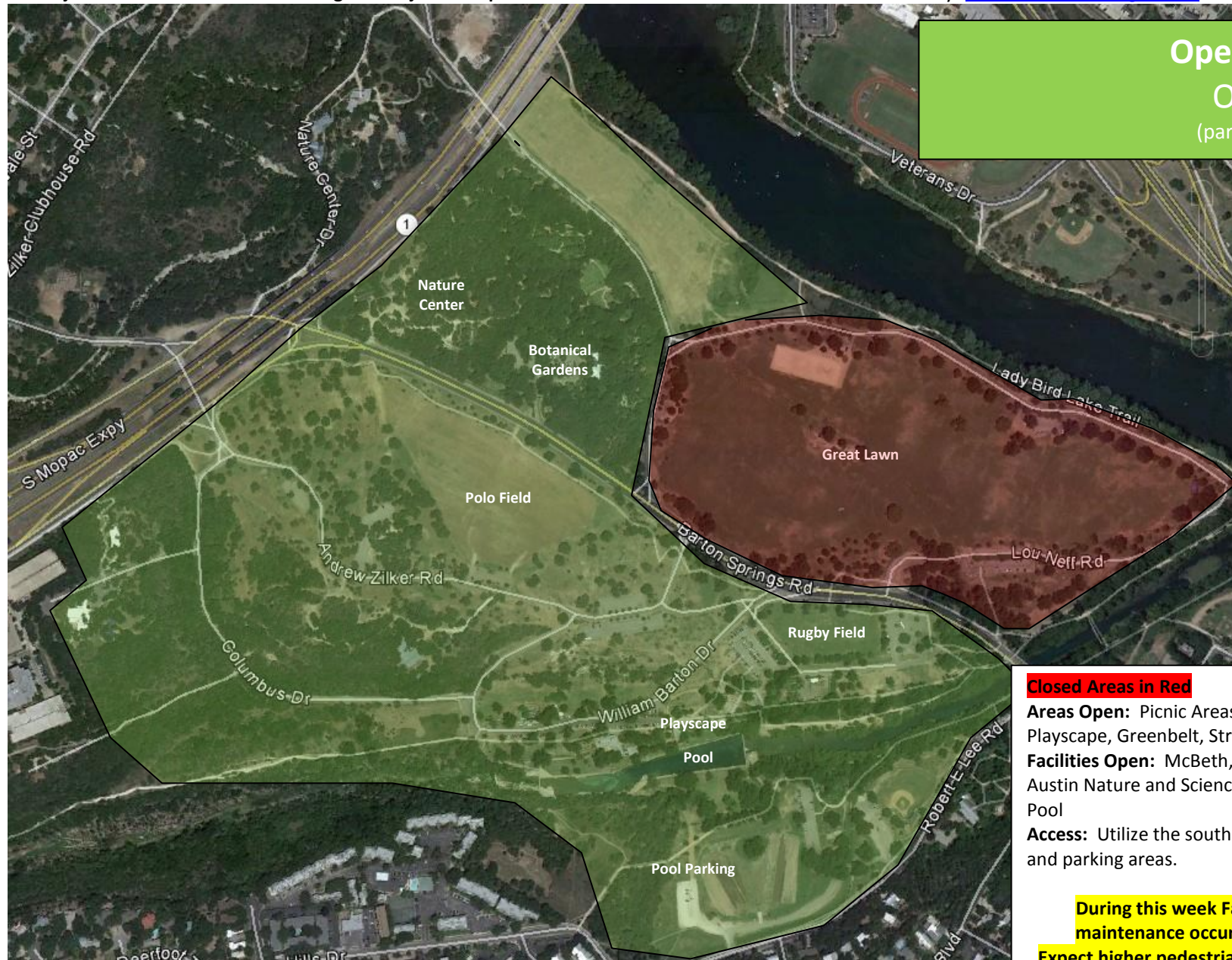
Expect higher pedestrian/vehicular traffic in area.

2016 Zilker Park Area OPEN Area Schedule at a Glance

All subject to weather conditions during the subject time period.

ACL Music Festival (Festival Days Sept 30 – Oct 2, and 7-9)

Road closures vary. www.austintexas.gov/ace for detailed information.



Open Areas (green)
October 15-21
(park maintenance week)

Closed Areas in Red
Areas Open: Picnic Areas, Rugby Field, Polo Field, Playscape, Greenbelt, Stratford Field
Facilities Open: McBeth, Zilker Botanical Garden, Austin Nature and Science Center, Barton Springs Pool
Access: Utilize the south side main park entrances and parking areas.

During this week Fall and post event turf maintenance occurs weather permitting.
Expect higher pedestrian/vehicular traffic in area.

2016 Zilker Park Area OPEN Area Schedule at a Glance

All subject to weather conditions during the subject time period.

Trail of Lights Festival (Event Nights Dec 3, and 10-23)

Road closures vary. www.austintexas.gov/ace for detailed information.



Open Areas (green)
October 22 – 30
(open period)

Transitional Feneline in Red
Areas Open: Great Lawn, Picnic Areas, Rugby Field, Polo Field, Playscape, Greenbelt, Stratford Field
Facilities Open: McBeth, Zilker Botanical Garden, Austin Nature and Science Center, Barton Springs Pool
Access: Utilize all north and south side main park entrances and parking areas, including Lou Neff.

2016 Zilker Park Area OPEN Area Schedule at a Glance

All subject to weather conditions during the subject time period.

Trail of Lights Festival (Event Nights Dec 3, and 10-23)

Roads closures vary. www.austintexas.gov/ace for detailed information.

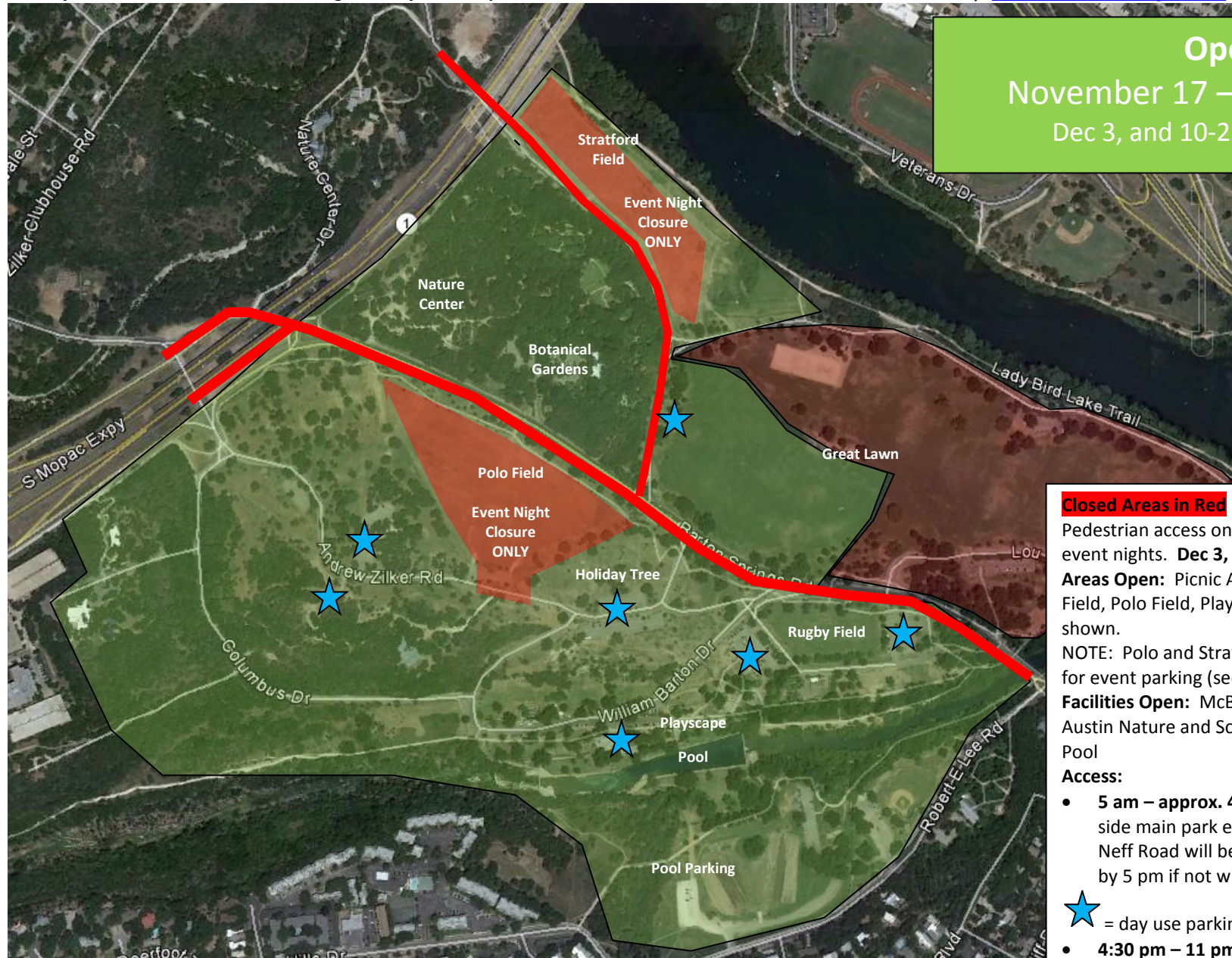


2016 Zilker Park Area OPEN Area Schedule at a Glance

All subject to weather conditions during the subject time period.

Trail of Lights Festival (Event Nights Dec 3, and 10-23)

Roads closures vary. www.austintexas.gov/ace for detailed information.



Open Areas (green)
November 17 – December 23
Dec 3, and 10-23 are Event Nights

Closed Areas in Red

Pedestrian access only after approx. 4:30 pm on event nights. **Dec 3, and 10-23 of the period.**

Areas Open: Picnic Areas, Rugby Field, Stratford Field, Polo Field, Playscape, Greenbelt, Great Lawn as shown.

NOTE: Polo and Stratford Fields are utilized at night for event parking (see subject area notes on map).

Facilities Open: McBeth, Zilker Botanical Garden, Austin Nature and Science Center, Barton Springs Pool

Access:

- **5 am – approx. 4:30 pm daily** - utilize the south side main park entrances and parking areas. Lou Neff Road will be closed. All cars must clear site by 5 pm if not with an event parking permit.



= day use parking for non-event times/closures

- **4:30 pm – 11 pm** – daily lane/road closures.

Nightly lane/road closures - Dec 3, and 10-23.

www.austintexas.gov/ace **see red line**

Expect higher pedestrian/vehicular traffic in area.