



ONION CREEK METRO PARK

Public Meeting #4

3.12.2015

DESIGN



DYNAMIC



BRG

GOODNIGHT RANCH

swa

CONNECTIVITY

CREATIVITY



SUSTAINABILITY



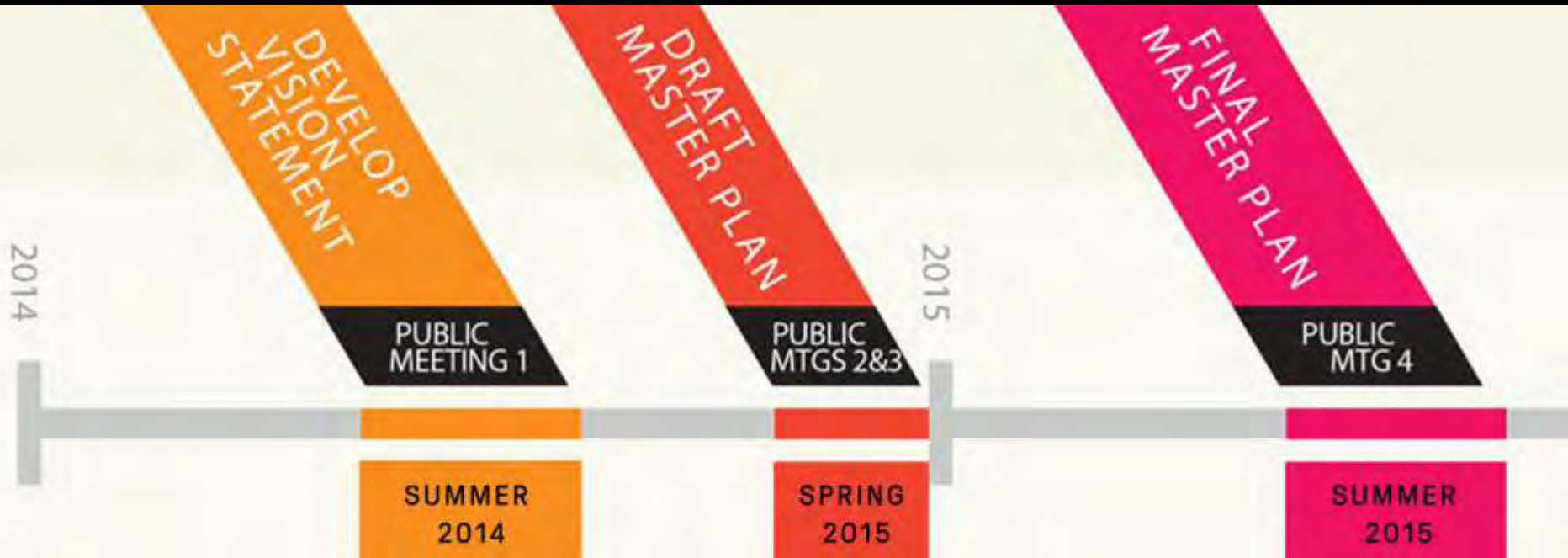
Purpose of a Master Plan:

- **Access to future public bond dollars:**
Future developments and improvements to Metro Park that use public bonds must be based on a master plan.
- **Create a vision of a 550 acre park**
Funding allocated in 1998 for purchase did not include money to develop or improve Metro park.
- **Create a park with community input**
Master Plan provides input in terms of ideas of recreation, entertainment, education, and natural open spaces.

Purpose of Tonight's Meeting:

- Present final draft of Master Plan :
Vision for the park areas, uses and implementation

Master Plan Timeline:



high preference



low preference

- nature paths
- stream restoration
- forest restoration
- wildlife habitat
- wildflower field
- water conservation
- 5k loop
- multi-use trail
- prairie restoration
- creek overlooks
- picnic grove
- dog park
- bike trails
- great lawn
- community garden

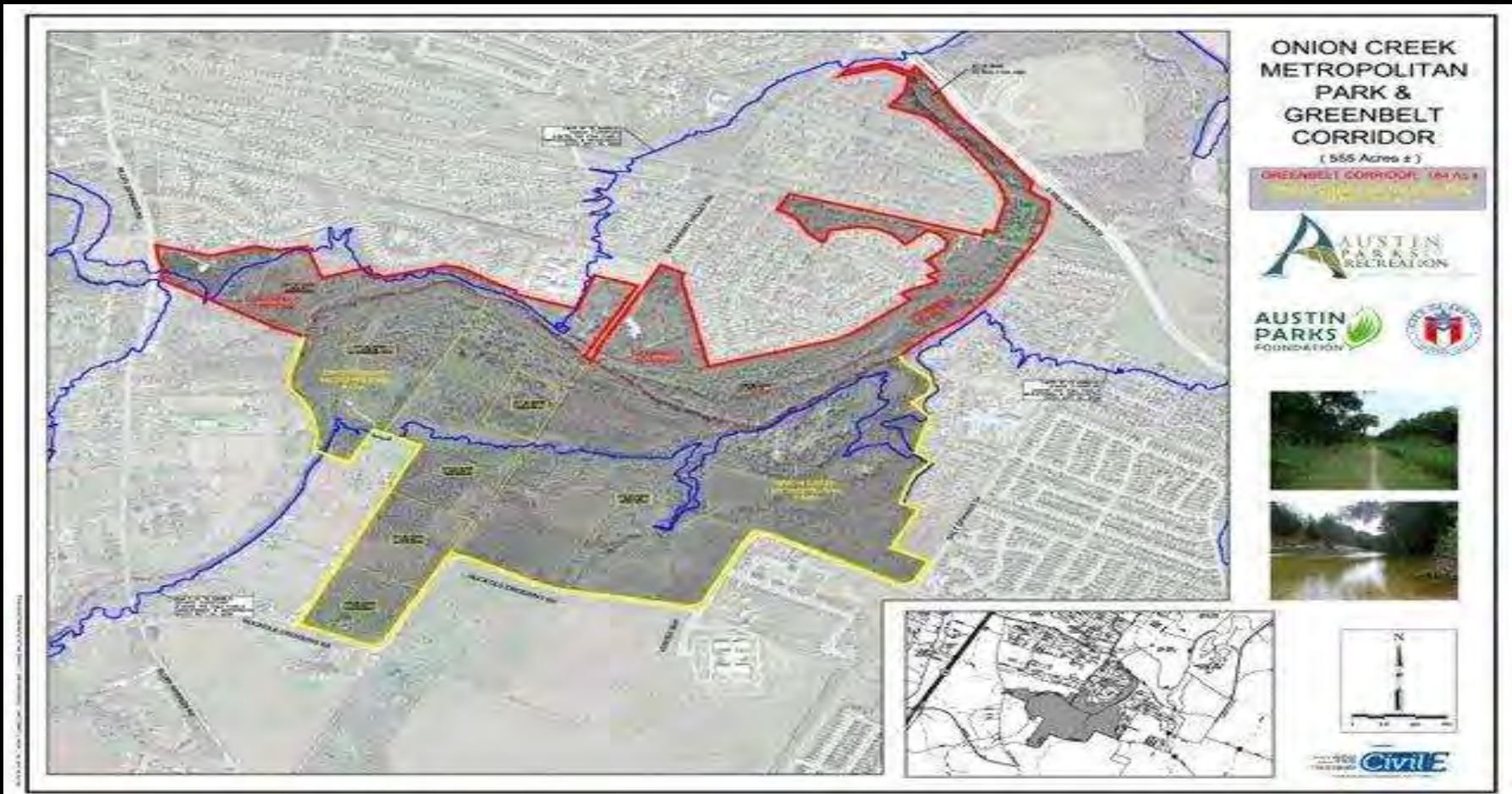
- invasive removal
- nature education
- picnic shelters
- grazing animals
- sustainable energy
- creek beach
- boot camp
- playground
- detention lake
- native plant nursery
- star gazing
- adventure forest
- observation tower
- activity meadows
- splash pad
- movies in the park
- birding center
- live music
- outdoor market
- group pavilion
- wetland
- seed collection
- workout stations
- disc golf
- equestrian trails
- community space
- botanic garden
- tree houses
- adventure play

- ecological research
- hammock grove
- butterfly garden
- whiff
- porch swing grove
- great hill
- amphitheater
- skate park
- festival space
- vehicle parking
- education center
- model airplanes
- volleyball
- yoga/pilates
- soccer
- children's museum
- library
- cafe

- bio-swales
- perli cabs
- archery
- visitors center
- sculpture park
- bmw
- mini golf
- fly fishing
- baseball/softball
- bowling alley
- billiards
- interactive art
- installation art
- wedding venues
- art studio
- children's maze
- bouncy castles
- basketball
- badminton
- boxcar racing
- bocce
- croquet
- ice skating



Metro Park:



Onion Creek Metro Park History:

- **January–May 2014:**
City staff negotiated a proposed consent agreement between City of Austin, Onion Creek Metro Park District and Austin Goodnight Ranch.
- **June 2014:**
City Council approved the partnership agreement.
- **September 2014:**
Began Community Meetings

Proposed Partnership Agreement

Two Public Parks

In-District Park (within the development) = 110 acres

Out-of- District Park (Metro park) = 550 acres



✓ 4 Schools
within a mile

✓ Connectivity
between Metro
Park and other
surrounding
developments

Park Agreement:

- **PARD Contributions:**
 - Initial construction Fall of 2017 on the Initial Park Improvements;
 - Direct implementation of the Master Plan through the bond process and PARD revenues;
 - Construct improvements on a phased schedule.

Park Agreement:

- **Goodnight Contributions:**

- Fund in-district park amenities including a 3 mile trail connecting to the Metro Park and other open public space;
- Provide funding to complete a master plan for the Metro Park;
- Annual funding for maintenance of the initial park improvements until the District can fully fund.

Summary of Steps:

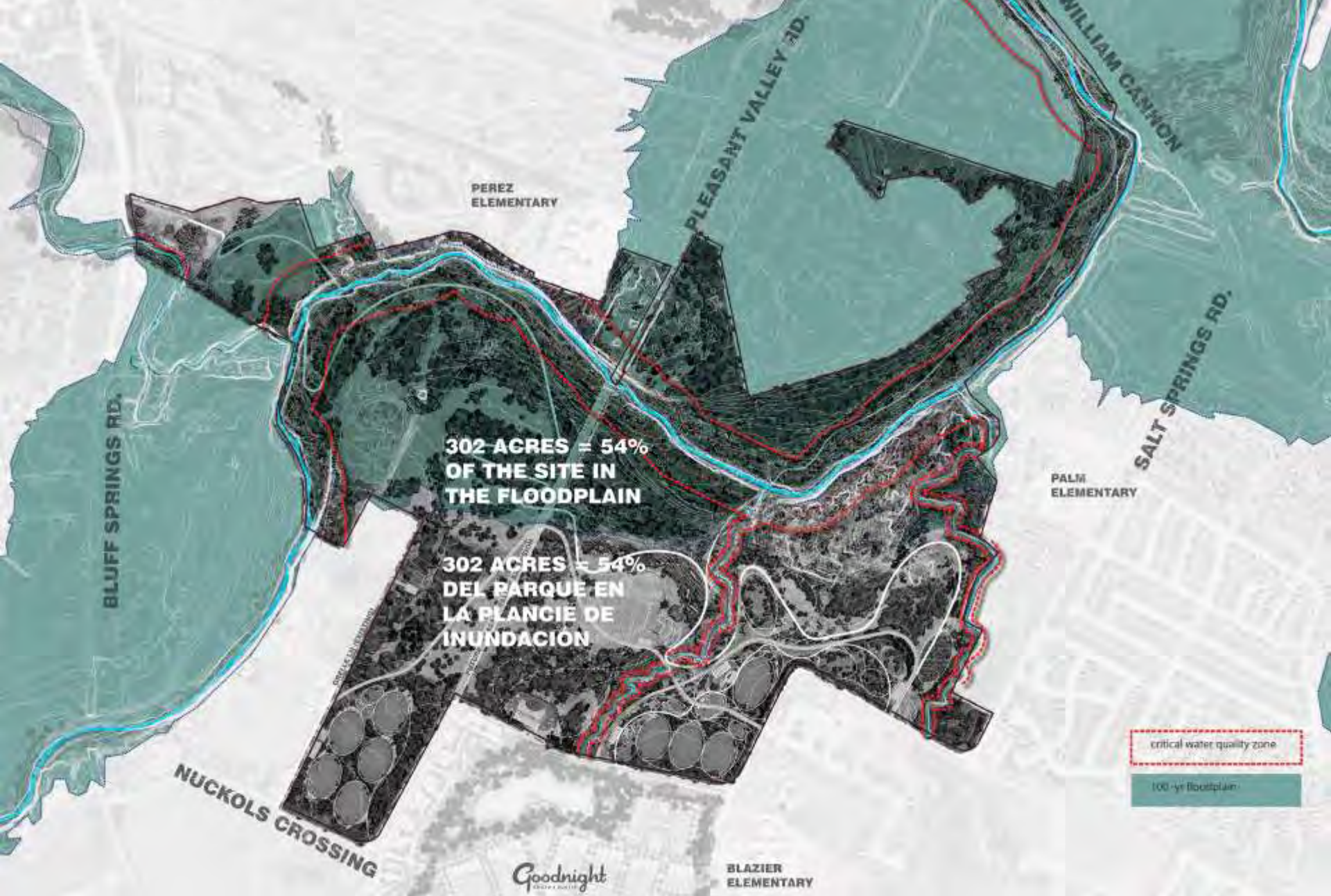
- 2014:** Council approved the partnership agreement;
- 2014:** PARD and Austin Parks Foundation hired SWA to complete master plan;
- 2014-15:** PARD and Austin Parks Foundation conduct community meetings;
- 2015:** Council adopts master plan;
- 2016:** PARD begins detailed design work on Initial Park Improvements;
- 2017:** PARD constructs Initial Park Improvements.

SITE CONTEXT:





ADJACENCIES



SITE CONSTRAINTS

A photograph of a river flowing through a dense forest. The water is calm and reflects the surrounding green trees and foliage. The scene is peaceful and natural. The text 'FRAMEWORK PLAN' is overlaid in a bold, yellow, sans-serif font on the left side of the image.

FRAMEWORK PLAN





SOCCER COMPLEX

CHATEAU AT ONION CREEK

PEREZ ELEMENTARY

PLEASANT VALLEY RD.

WILLIAM CANNON

BLUFF SPRINGS RD.

ONION CREEK PLANTATIONS

PALM ELEMENTARY

SALT SPRINGS RD.

ONION CREEK

FUTURE PLEASANT VALLEY CROSSING

NUCKOLS CROSSING

GOODNIGHT RANCH

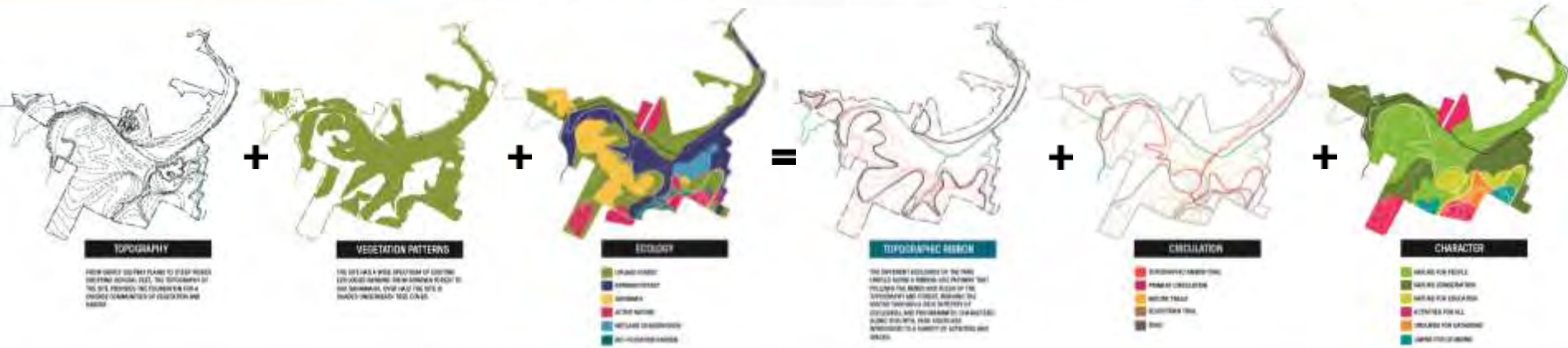
BLAZIER ELEMENTARY

MCKINNEY HEIGHTS

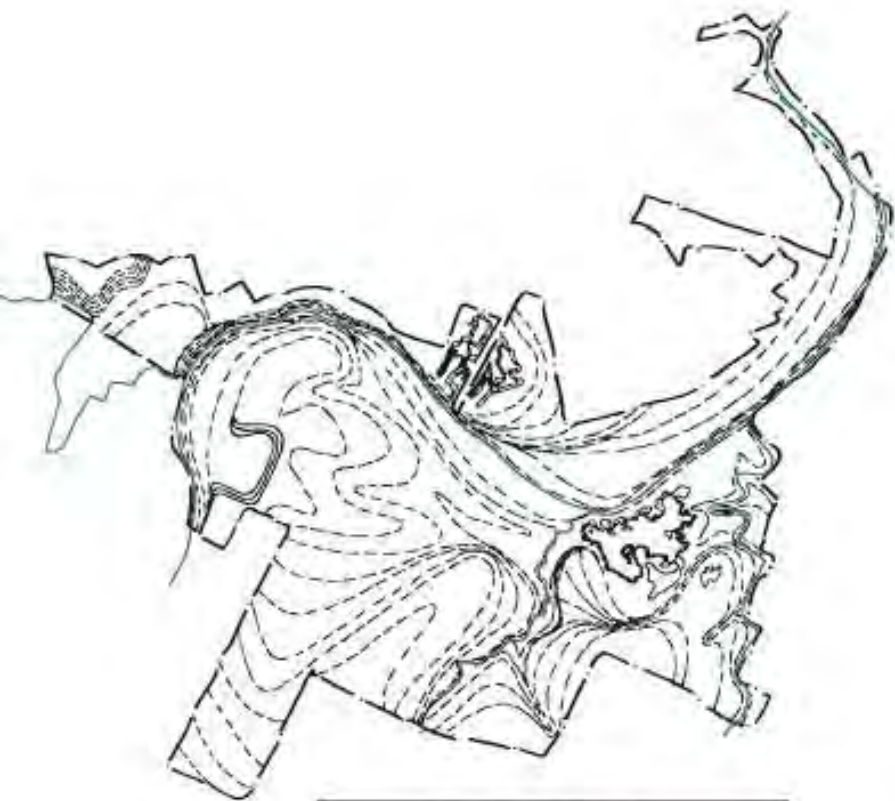
A photograph of a river flowing through a dense forest. The water is calm and reflects the surrounding green trees and foliage. The text "DRAFT MASTER PLAN:" is overlaid in a bold, yellow, sans-serif font across the middle of the image.

DRAFT MASTER PLAN:

DESIGN PROCESS + INTENT:



SITE ANALYSIS:



TOPOGRAPHY

FROM GENTLY SLOPING PLAINS TO STEEP RIDGES DROPPING SEVERAL FEET, THE TOPOGRAPHY OF THE SITE PROVIDES THE FOUNDATION FOR A DIVERSE COMMUNITIES OF VEGETATION AND HABITAT.



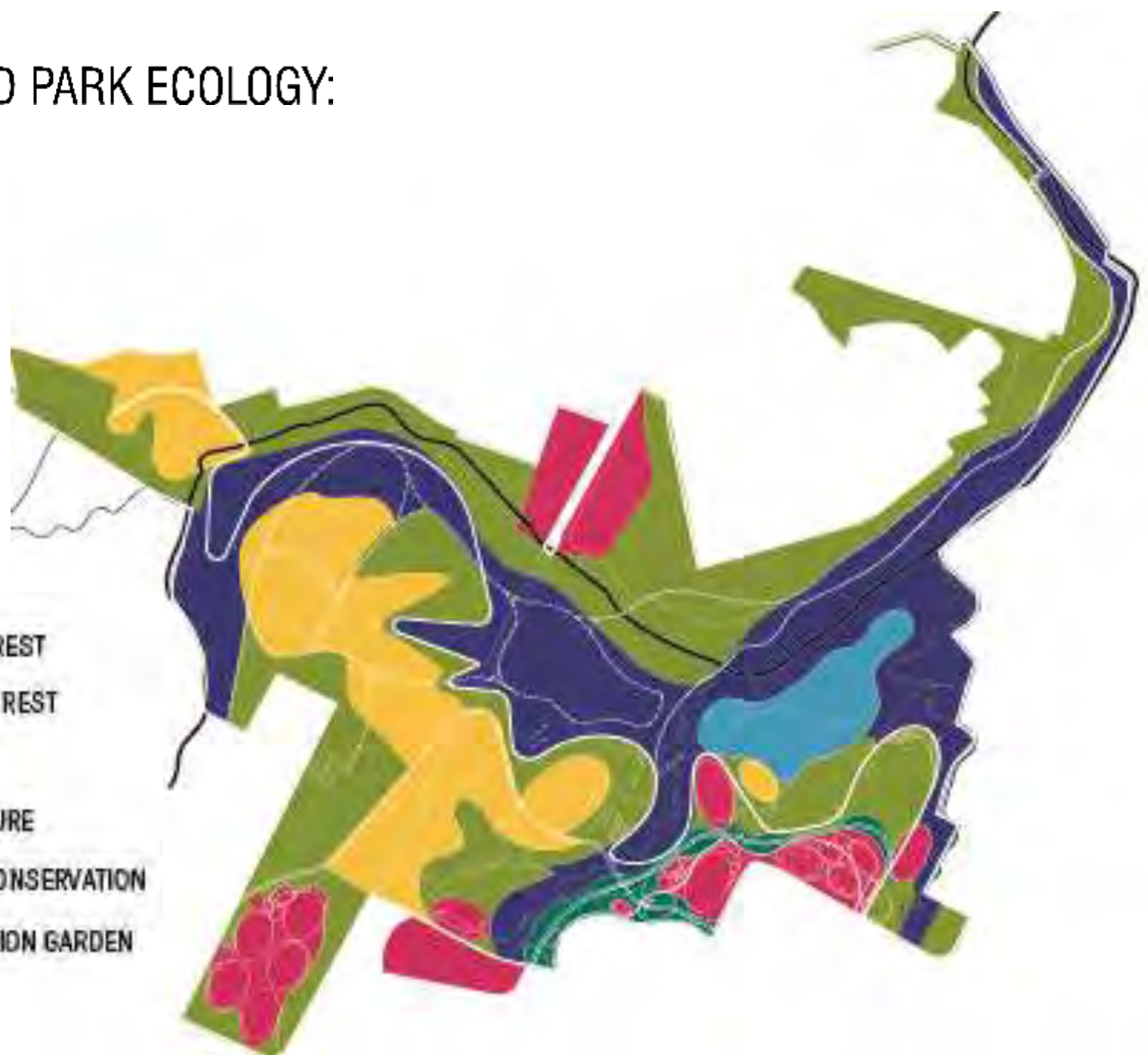
VEGETATION PATTERNS

THE SITE HAS A WIDE SPECTRUM OF EXISTING ECOLOGIES RANGING FROM RIPARIAN FOREST TO OAK SAVANNAHS. OVER HALF THE SITE IS SHADED UNDERNEATH TREE COVER.



PROPOSED PARK ECOLOGY:

- UPLAND FOREST
- RIPARIAN FOREST
- SAVANNAH
- ACTIVE NATURE
- WETLAND CONSERVATION
- BIO-FILTRATION GARDEN



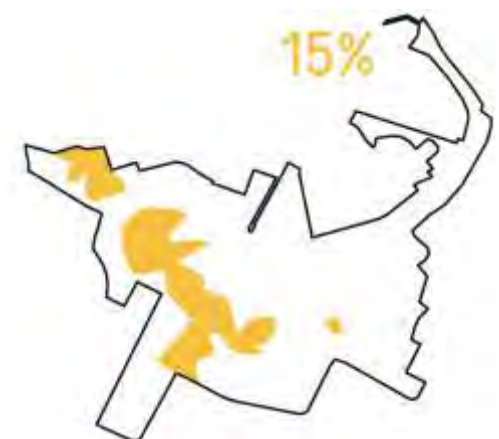
ECOLOGICAL CHARACTER



live oak | cedar elm | pecan |
Hackberry | white oak | bur oak
> 65% tree cover



cottonwood | bald cypress |
sycamore | pecan | white oak
> 65% tree cover

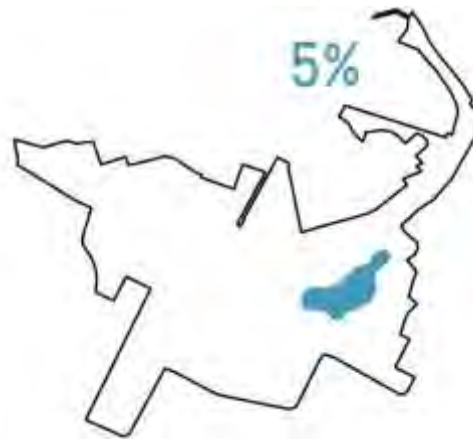


silver bluestem | indian blanket
wintergrass | side oats gramma
< 30% tree cover

ECOLOGICAL CHARACTER



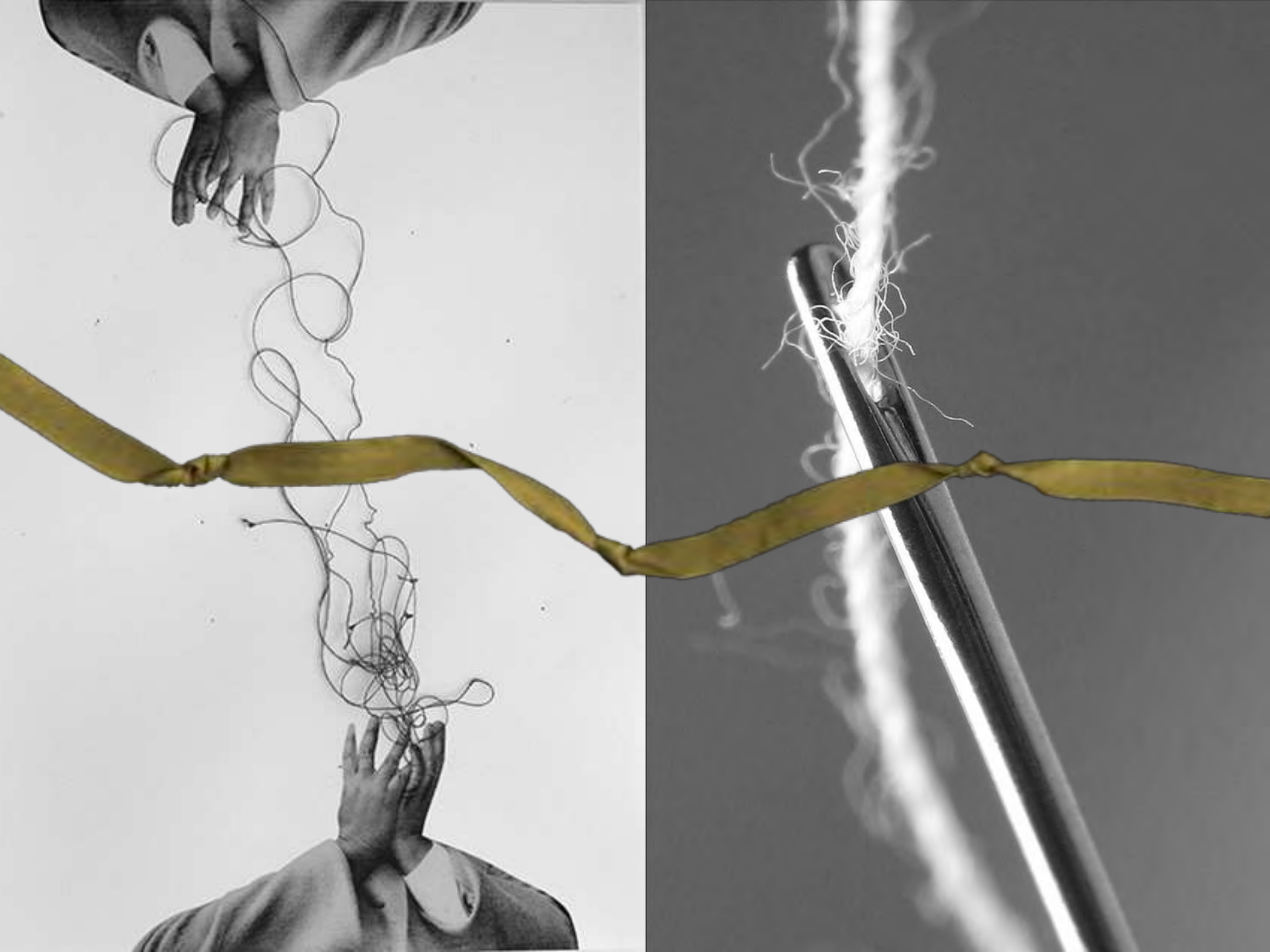
lawns | playfields | gardens |
plazas
< 25% tree cover



ephemeral wetland | sensitive
communities
30% - >65% tree cover



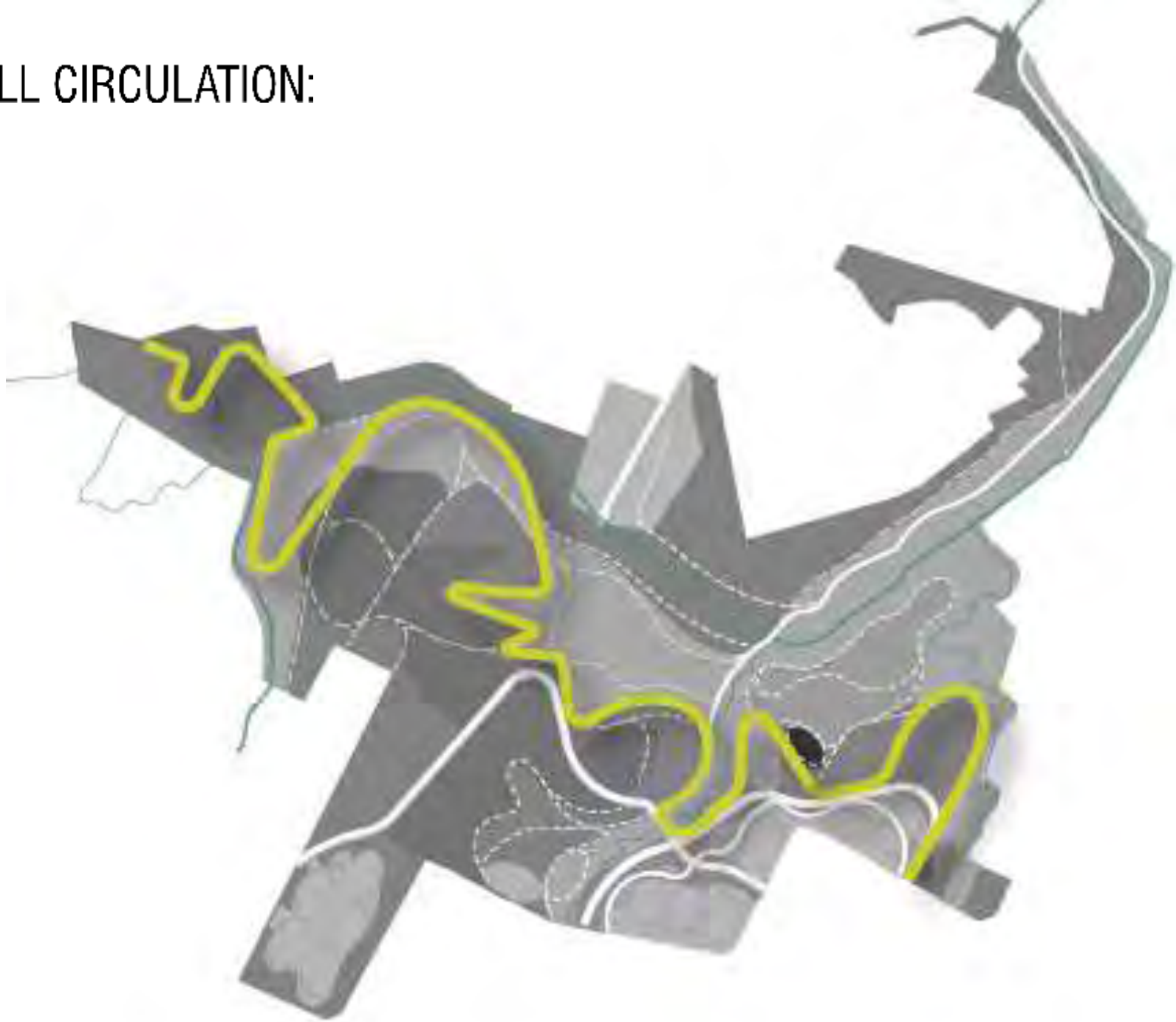
switchgrass | sunflowers | side
oats gramma
< 15% tree cover



TOPOGRAPHIC RIBBON:



OVERALL CIRCULATION:



PROGRAM CHARACTER:

-  NATURE FOR PEOPLE
-  NATURE CONSERVATION
-  NATURE FOR EDUCATION
-  ACTIVITIES FOR ALL
-  GROUNDS FOR GATHERING
-  LAWNS FOR LOUNGING



DRAFT MASTER PLAN



BLUFF SPRINGS RD.

**PEREZ
ELEMENTARY**

PLEASANT VALLEY RD.

WILLIAM CANNON

SALT SPRINGS

**PALM
ELEMENTARY**

ORLEANS (LEISTENOW)

NATURE PRESERVE PALM VALLEY INTERSECTION

NUCKOLS CROSSING

**GOODNIGHT
RANCH**

**BLAZIER
ELEMENTARY**

PARK ENTRY:



PARKWAY:





HEART OF THE PARK



BLUFF SPRINGS RD.

PEREZ
ELEMENTARY

PLEASANT VALLEY RD.

WILLIAM CANNON

SALT SPRINGS RD.

PALM
ELEMENTARY

NUCKOLS CROSSING

GOODNIGHT
RANCH

BLAZIER
ELEMENTARY

COMMUNITY CENTER/GREAT LAWN



PARKING
COMMUNITY PAVILION
VENDOR SPACES
PICNIC SEATING

RESTROOM
NATURE PLAYGROUND
BIO-FILTRATION
ENTRY MONUMENT
FLEX MEADOW

PLAZA
GARDENS

GREAT LAWN

COMMUNITY CENTER/GREAT LAWN



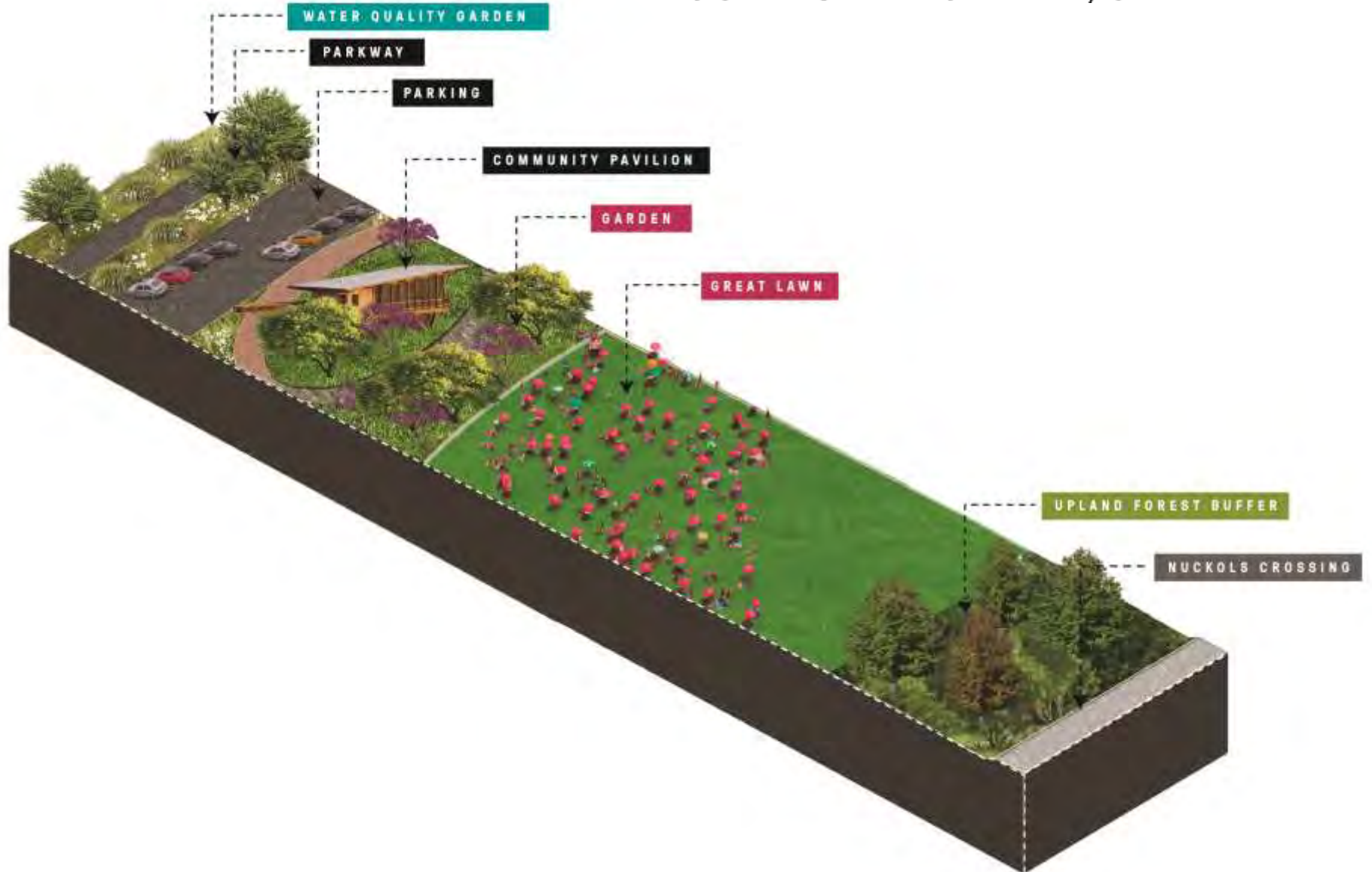
PARKING
COMMUNITY PAVILION
VENDOR SPACES
PICNIC SEATING

PLAZA
GARDENS

RESTROOM
NATURE PLAYGROUND
BIO-FILTRATION
ENTRY MONUMENT
FLEX MEADOW

GREAT LAWN

COMMUNITY CENTER/GREAT LAWN

















ACTIVE SPORTS



BLUFF SPRINGS RD.

PEREZ
ELEMENTARY

PLEASANT VALLEY RD.

WILLIAM CANNON

SALT SPRINGS RD.

PALM
ELEMENTARY

NUCKOLS CROSSING

GOODNIGHT
RANCH

BLAZIER
ELEMENTARY



PLAYFIELDS

WORKOUT STATIONS

GRAVEL PARKING

PICNIC SEATING

FLEX MEADOW

PLAYGROUND

COMMUNITY PAVILION

PARKING

BIO-FILTRATION

ENTRY MONUMENT

OPEN LAWN

OPEN LAWN

PLAYFIELDS

JOGGING TRAIL

Lake



PLAYFIELDS

WORKOUT STATIONS

GRAVEL PARKING

PICNIC SEATING

FLEX MEADOW

PLAYGROUND

COMMUNITY PAVILION

PARKING

BIO-FILTRATION

ENTRY MONUMENT

OPEN LAWN

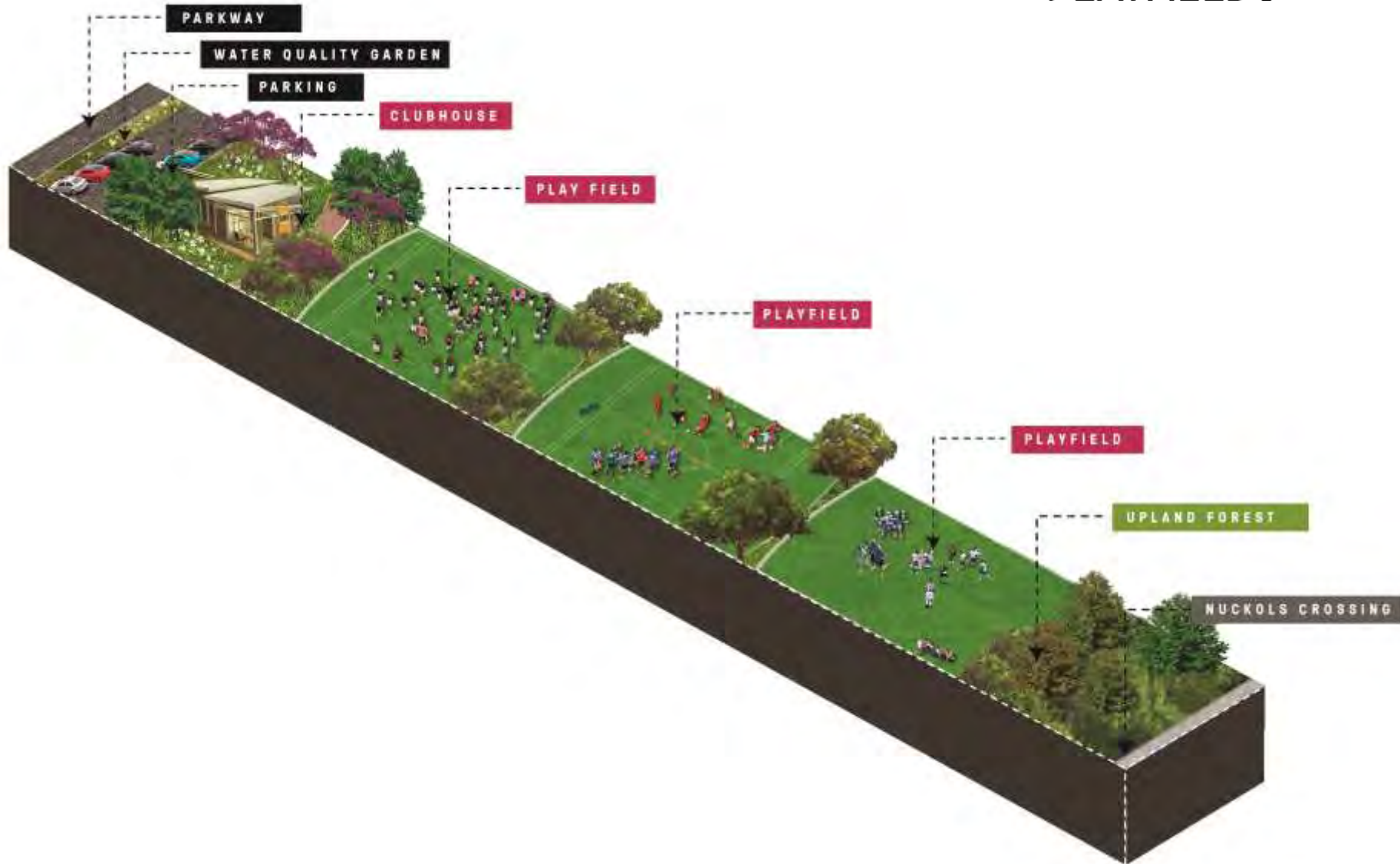
OPEN LAWN

PLAYFIELDS

JOGGING TRAIL

Lake

PLAYFIELDS







PLAYGROUNDS



BLUFF SPRINGS RD.

PEREZ
ELEMENTARY

PLEASANT VALLEY RD.

WILLIAM CANNON

SALT SPRINGS RD.

PALM
ELEMENTARY

NUCKOLS CROSSING

GOODNIGHT
RANCH

BLAZIER
ELEMENTARY





ADVENTURE SPORTS



BLUFF SPRINGS RD.

PEREZ
ELEMENTARY

PLEASANT VALLEY RD.

WILLIAM CANNON

SALT SPRINGS RD.

PALM
ELEMENTARY

NUCKOLS CROSSING

GOODNIGHT
RANCH

BLAZIER
ELEMENTARY



NATURAL HERITAGE POINT



BLUFF SPRINGS RD.

PEREZ
ELEMENTARY

PLEASANT VALLEY RD.

WILLIAM CANNON

SALT SPRINGS RD.

PALM
ELEMENTARY

NUCKOLS CROSSING

GOODNIGHT
RANCH

BLAZIER
ELEMENTARY

HERITAGE POINT



GARDEN PLAZA

HERITAGE LAWN

ICONIC PRAIRIE

TOPOGRAPHIC RIBBON TRAIL

GROUP PAVILION

FLEX MEADOW

PICNIC GROVE

OBSERVATION TOWER

HERITAGE LAWN

GARDEN PLAZA

HERITAGE LAWN

ICONIC PRAIRIE

TOPOGRAPHIC RIBBON TRAIL

GROUP PAVILION

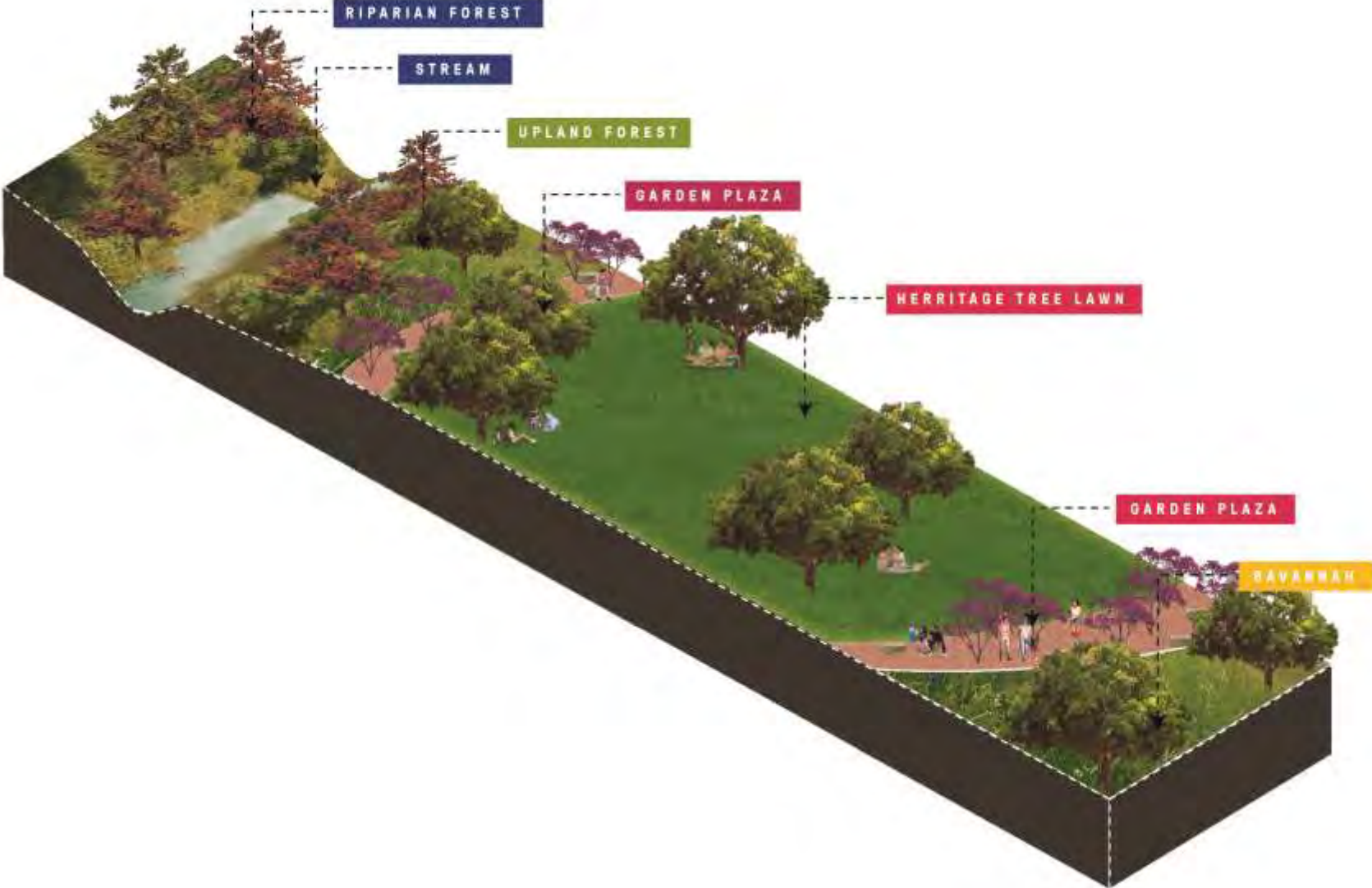
FLEX MEADOW

PICNIC GROVE

OBSERVATION TOWER

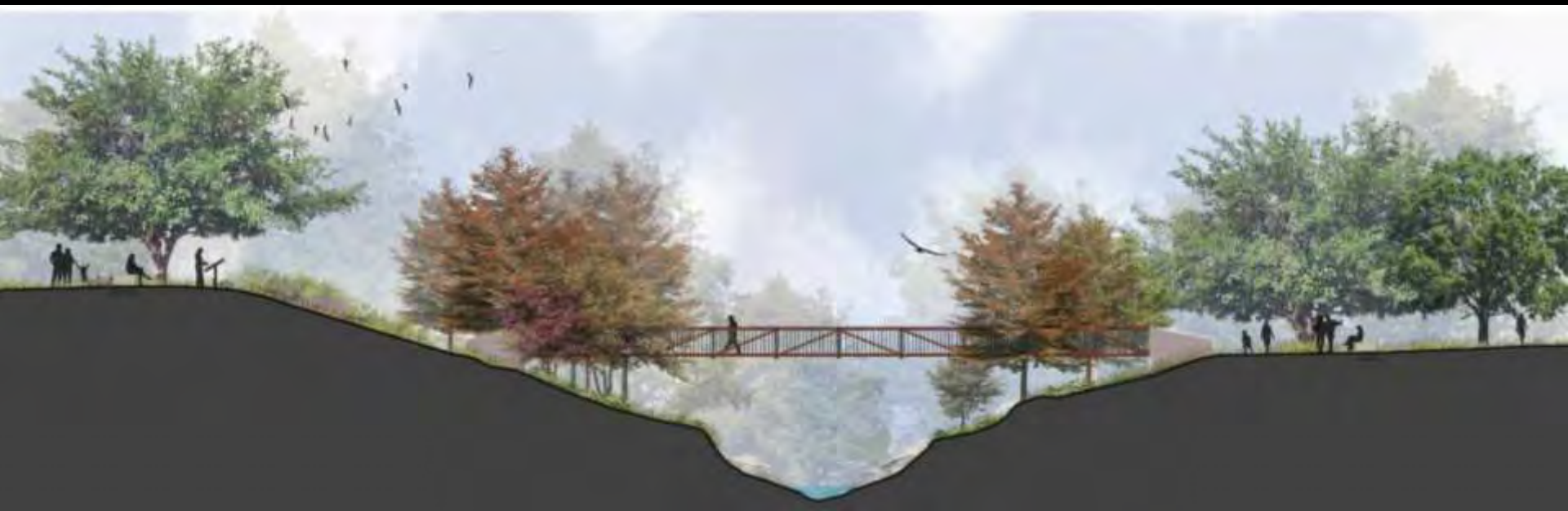


HERITAGE LAWN

















NATURE EDUCATION



BLUFF SPRINGS RD.

PEREZ
ELEMENTARY

PLEASANT VALLEY RD.

WILLIAM CANNON

SALT SPRINGS RD.

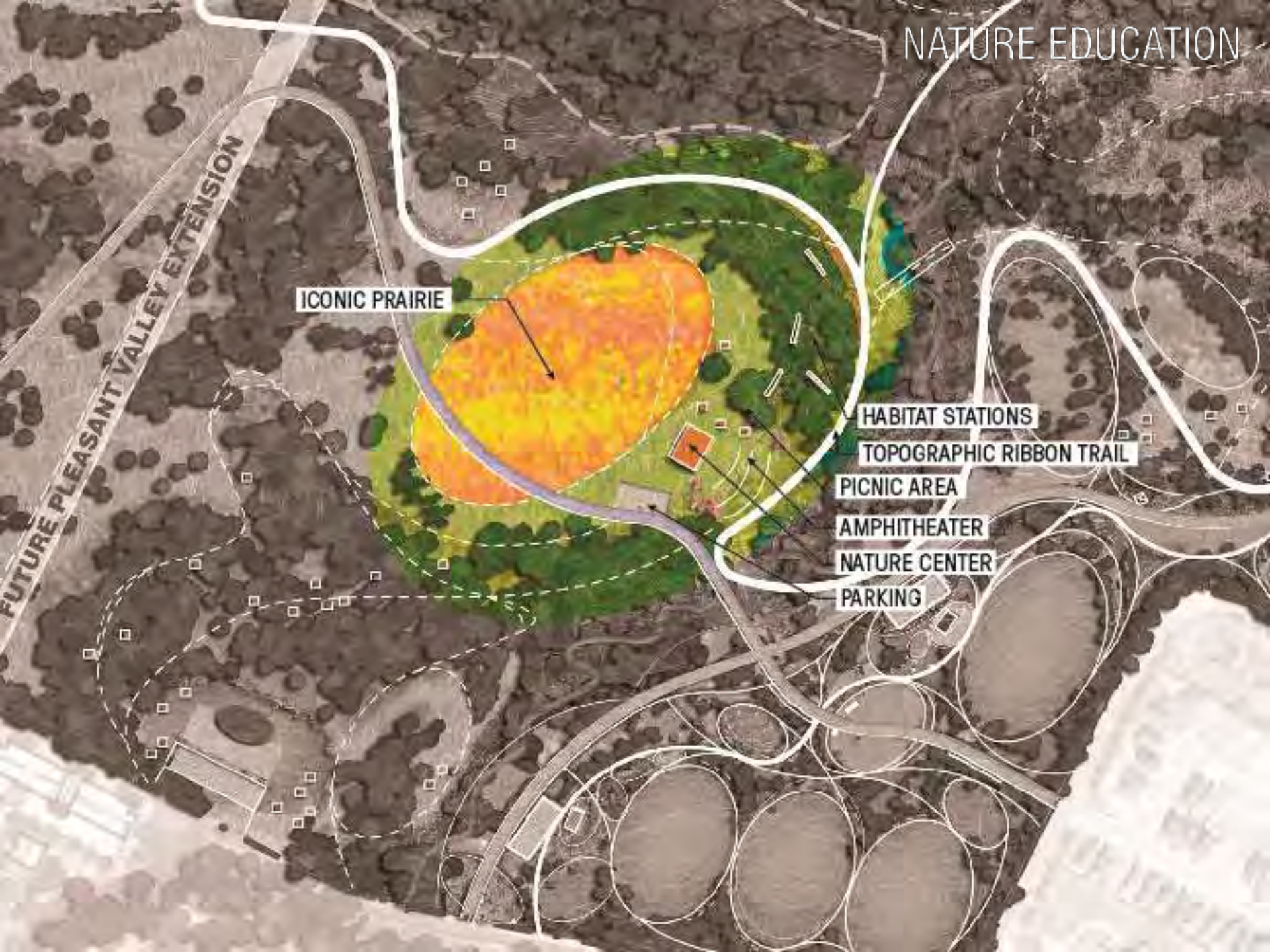
PALM
ELEMENTARY

NUCKOLS CROSSING

GOODNIGHT
RANCH

BLAZIER
ELEMENTARY

NATURE EDUCATION



ICONIC PRAIRIE

HABITAT STATIONS

TOPOGRAPHIC RIBBON TRAIL

PICNIC AREA

AMPHITHEATER

NATURE CENTER

PARKING

FUTURE PLEASANT VALLEY EXTENSION

FUTURE PLEASANT VALLEY EXTENSION

ICONIC PRAIRIE

HABITAT STATIONS

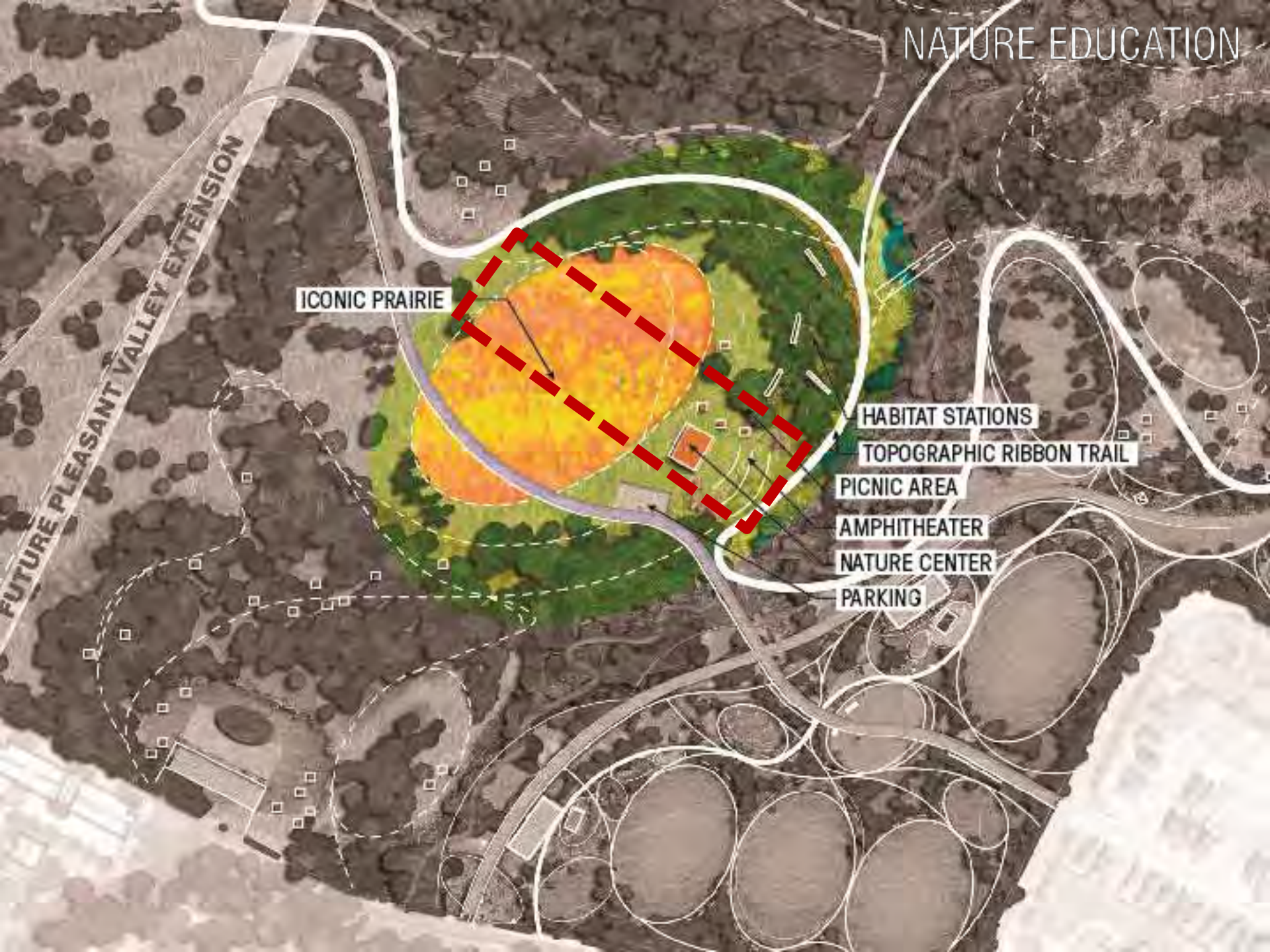
TOPOGRAPHIC RIBBON TRAIL

PICNIC AREA

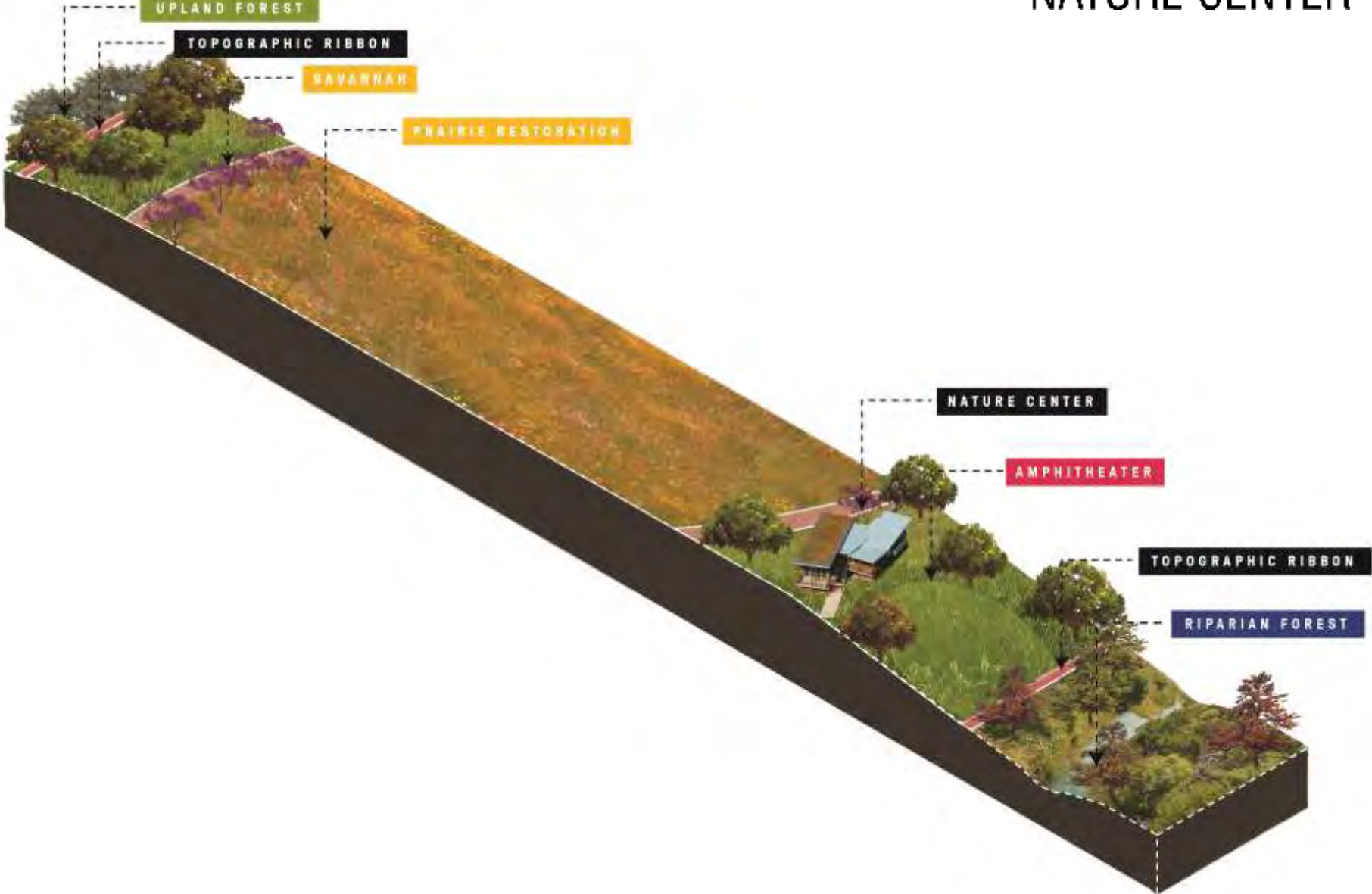
AMPHITHEATER

NATURE CENTER

PARKING



NATURE CENTER









HOW TO GROW
Native Plants

OF TEXAS AND THE SOUTHWEST

REVISED AND UPDATED EDITION



BY JILL NOKES

Illustrations by Katherine Miller Brown





WEST MEADOW



BLUFF SPRINGS RD.

PEREZ
ELEMENTARY

PLEASANT VALLEY RD.

WILLIAM CANNON

SALT SPRINGS RD.

PALM
ELEMENTARY

NUCKOLS CROSSING

GOODNIGHT
RANCH

BLAZIER
ELEMENTARY

SOUTH MEADOW

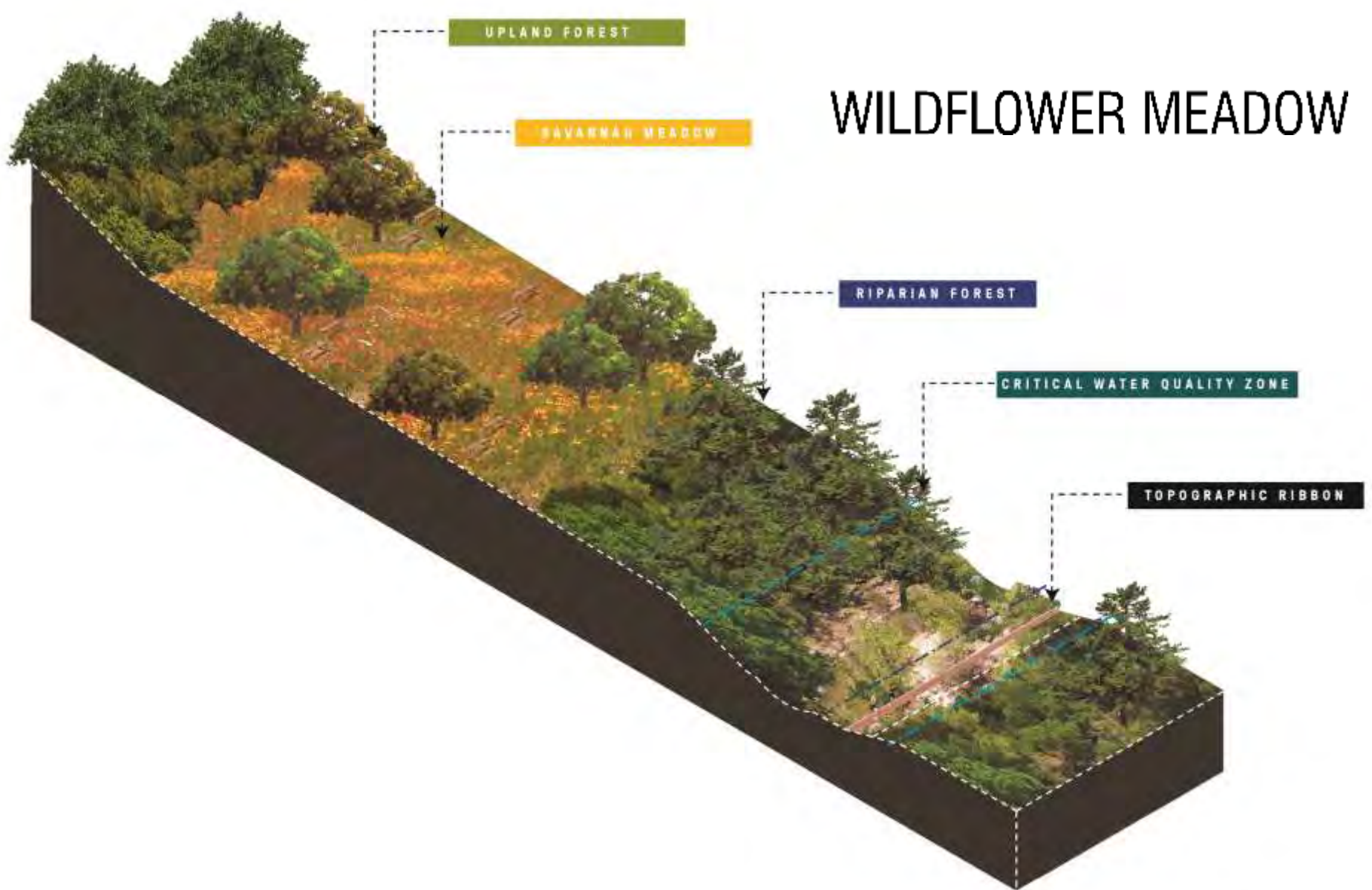
WILDFLOWER MEADOW



WILDFLOWER MEADOW



WILDFLOWER MEADOW





INITIAL PARK IMPROVEMENTS – FOCUS AREA



BLUFF SPRINGS RD.

PEREZ
ELEMENTARY

PLEASANT VALLEY RD.

WILLIAM CANNON

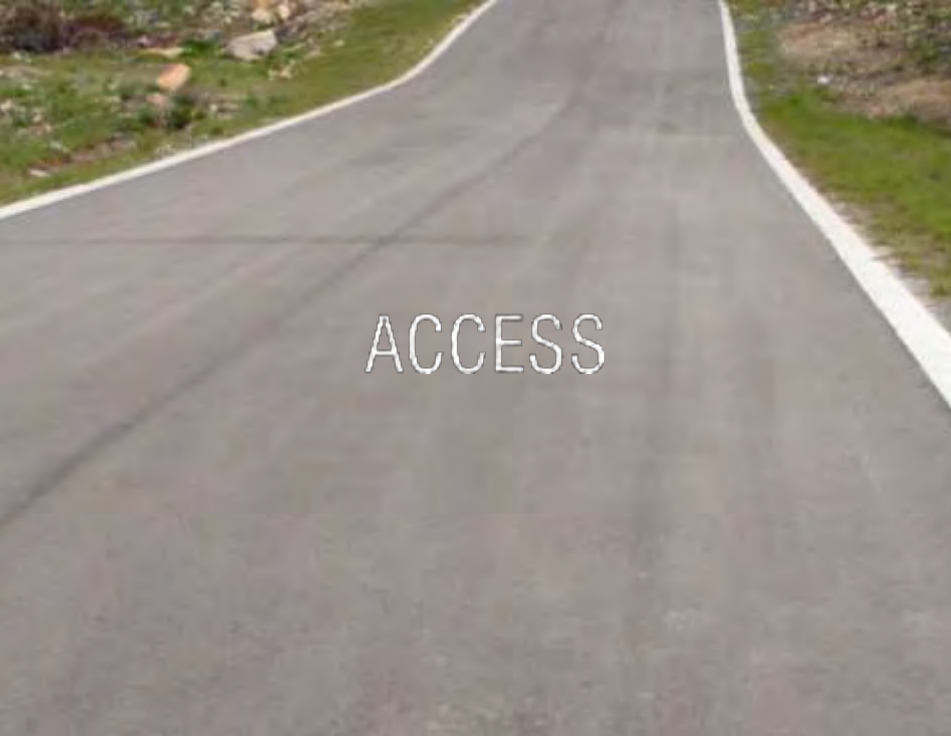
SALT SPRINGS RD.

PALM
ELEMENTARY

NUCKOLS CROSSING

GOODNIGHT
RANCH

BLAZIER
ELEMENTARY



ACCESS



IRRIGATED



PARKING



NON-IRRIGATED

DRAFT MASTER PLAN



BLUFF SPRINGS RD.

NUCKOLS CROSSING

PEREZ ELEMENTARY

PLEASANT VALLEY RD.

GOODNIGHT RANCH

BLAZIER ELEMENTARY

WILLIAM CANNON

SALT SPRINGS RD.

PALM ELEMENTARY

LEGEND

- | | |
|---------------------------|-------------------------------|
| 1 ENTRANCE MONUMENT | 25 ICONIC PRAIRIE |
| 2 COMMUNITY GARDEN | 26 PICNIC GROVE |
| 3 ADVENTURE PLAYGROUND | 27 PEDESTRIAN BRIDGE CROSSING |
| 4 OPEN FIELDS | 28 COMMUNITY/EVENT SPACE |
| 5 FAMILY PLAYGROUND | 29 PLAZA |
| 6 PLAY LAWN | 30 PORCH SWING GROVE |
| 7 NATURE BASED PLAY | 31 OVERLOOK |
| 8 EVENT CENTER | 32 CLUBHOUSE |
| 9 NATURE EDUCATION | 33 WORKOUT STATIONS |
| 10 WORKOUT STATIONS | 34 FAMILY PLAYGROUND |
| 11 GROUP PAVILION | 35 EQUESTRIAN FACILITY |
| 12 ENTRANCE MONUMENT | 36 PRAIRIE RESTORATION |
| 13 COMMUNITY PAVILION | 37 PICNIC MEADOW |
| 14 HERITAGE TREE LAWN | 38 EXISTING PARKING |
| 15 ICONIC PRAIRIE | 39 PARKOUR/ SKATEPARK |
| 16 FLEX MEADOW | 40 DISC GOLF |
| 17 OBSERVATION TOWER | 41 LOW WATER CROSSING |
| 18 OUTDOOR CLASSROOM | 42 BIRD BLINDS |
| 19 PICNIC GROVE | 43 OPEN LAWN |
| 20 WETLAND CONSERVATION | 44 PERMEABLE PARKING |
| 21 SHARED BRIDGE CROSSING | 45 EXISTING FAMILY PLAYGROUND |
| 22 NATURE CENTER | 46 OUTDOOR CLASSROOM |
| 23 AMPHITHEATER | P PARKING |
| 24 HABITAT STRUCTURES | R RESTROOM |





**ONION CREEK
METRO PARK**