



LADY BIRD LAKE

SOUTH FIRST STREET

BUTLER PARK

PALMER EVENT CENTER

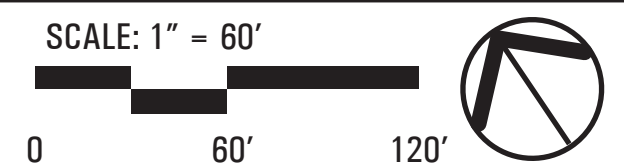
LONG CENTER

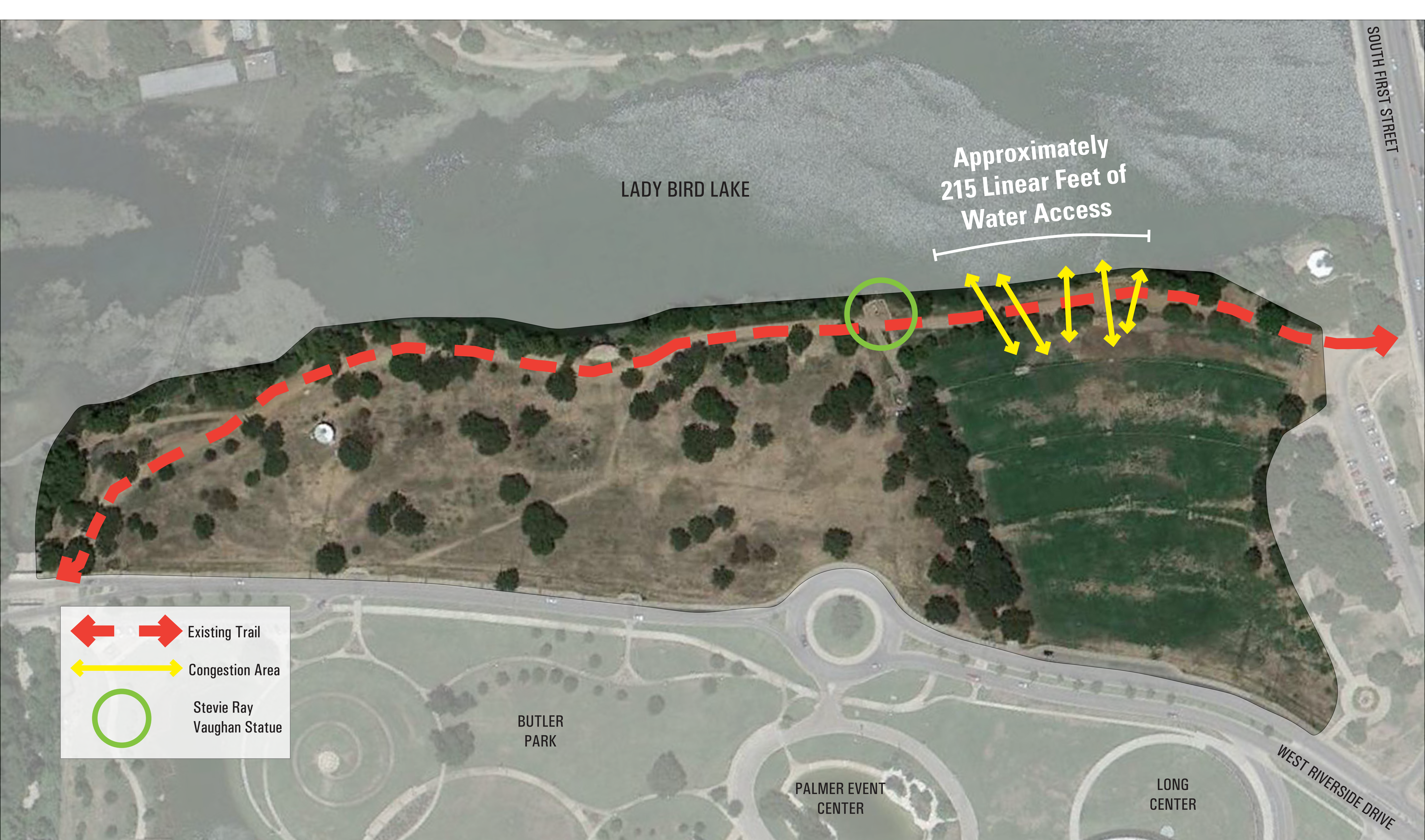
WEST RIVERSIDE DRIVE




SITE AERIAL

TOWN LAKE PARK - Auditorium Shores Improvements

OCTOBER 08, 2013
The information shown is based on the best information available and is subject to change without notice.








-  Existing Trail
-  Congestion Area
-  Stevie Ray Vaughan Statue

EXISTING AREA

TOWN LAKE PARK - Auditorium Shores Improvements

OCTOBER 08, 2013
The information shown is based on the best information available and is subject to change without notice.

SCALE: 1" = 60'



OFF-LEASH AREA DESIGNATION EXHIBIT - Presented at Parks and Recreation Board on **11-24-2009**

TOWN LAKE PARK - Auditorium Shores Improvements

OCTOBER 08, 2013
The information shown is based on the best information available and is subject to change without notice.





SOUTH FIRST STR

SOUTH LAMAR BLVD

Lady Bird Lake

Off Leash Area

Parking

Bottomland Woods

Auditorium Shores

Butler Park Pitch & Putt

West Bouldin Creek

Alliance Garden

Liz Carpenter Shade

Great Lawn

Observation Hill

DAC

Palmer Events Center

Long Center

Parking Expansion

BARTON SPRINGS ROAD

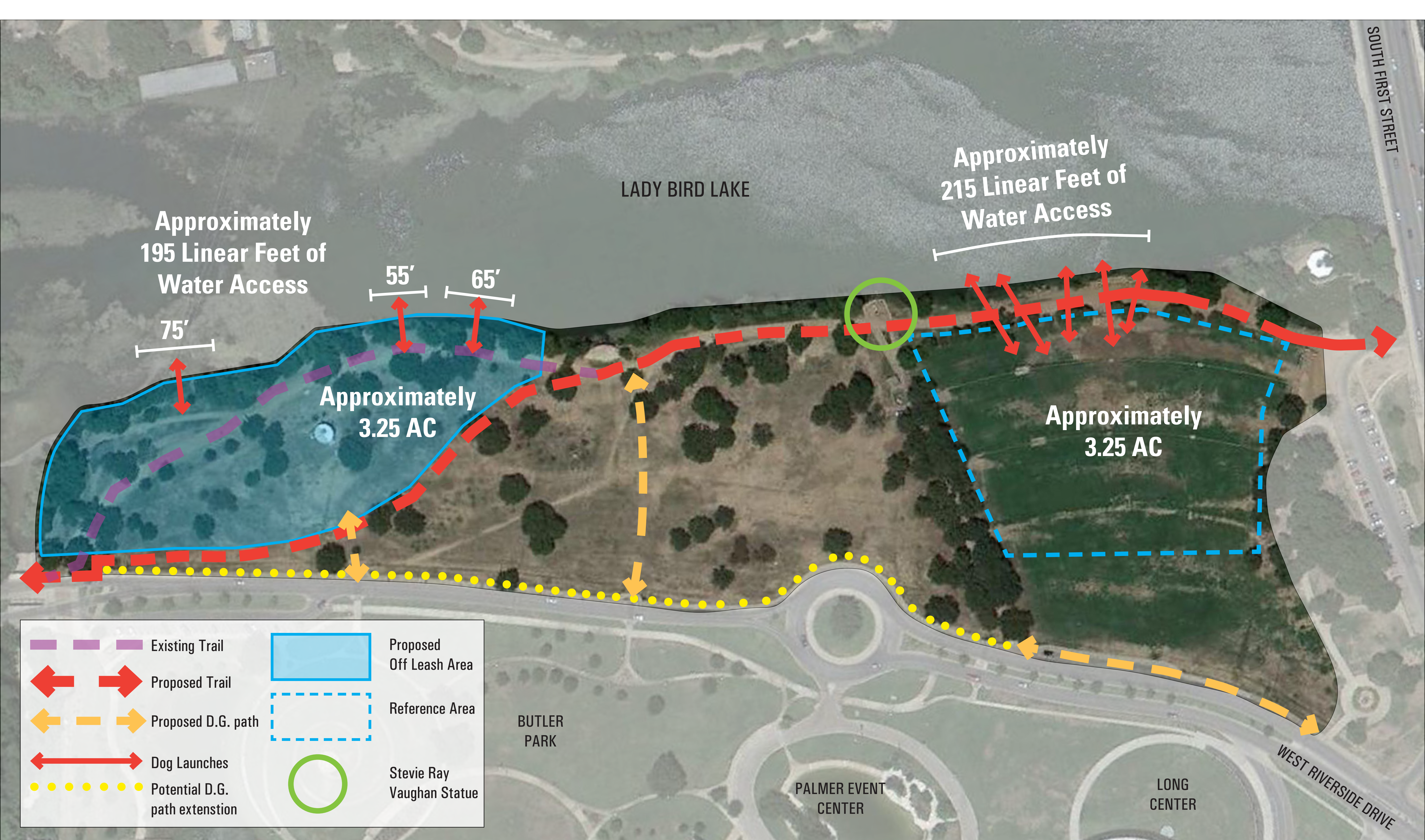
RIVERSIDE DRIVE

MASTERPLAN PROGRAM ELEMENTS EXHIBIT - Presented at Revised Masterplan Public Meeting on 12-03-2011

TOWN LAKE PARK - Auditorium Shores Improvements

OCTOBER 08, 2013
The information shown is based on the best information available and is subject to change without notice.





PROPOSED AREA

TOWN LAKE PARK - Auditorium Shores Improvements

OCTOBER 08, 2013
 The information shown is based on the best information available and is subject to change without notice.

SCALE: 1" = 60'

0 60' 120'

T B G PARTNERS



PROJECT STATS

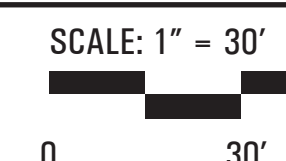
- 3.25 Acres of open space
- Approx. 535 LF unobstructed run areas
- Approx. 195 LF unobstructed water access

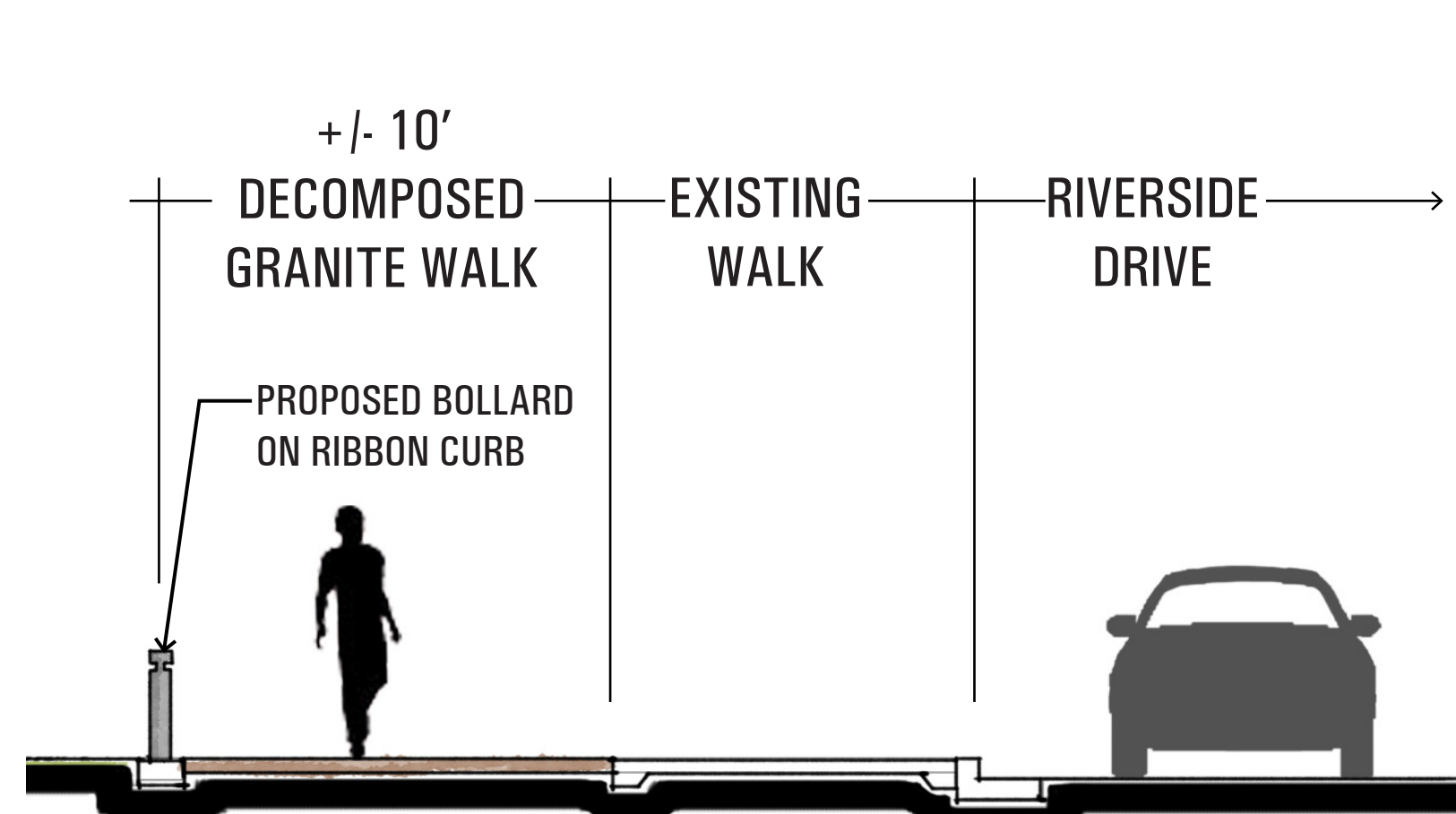
OFF-LEASH AREA - Conceptual Site Plan

TOWN LAKE PARK - Auditorium Shores Improvements

OCTOBER 08, 2013

The information shown is based on the best information available and is subject to change without notice.





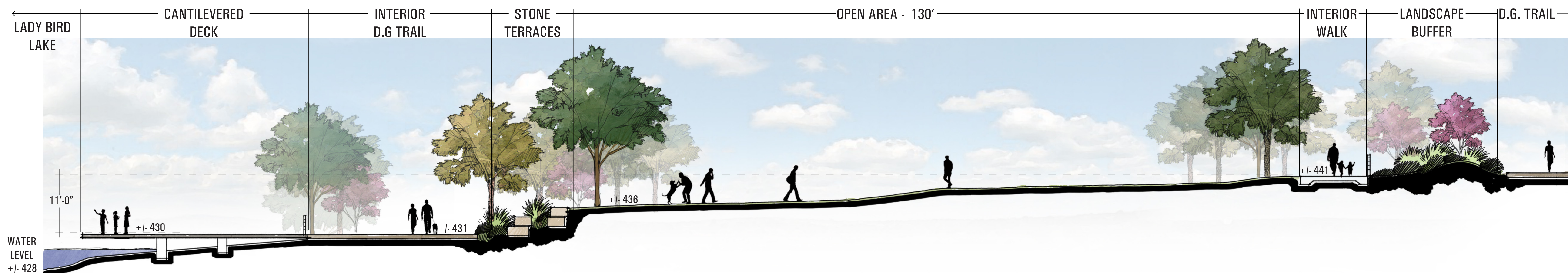
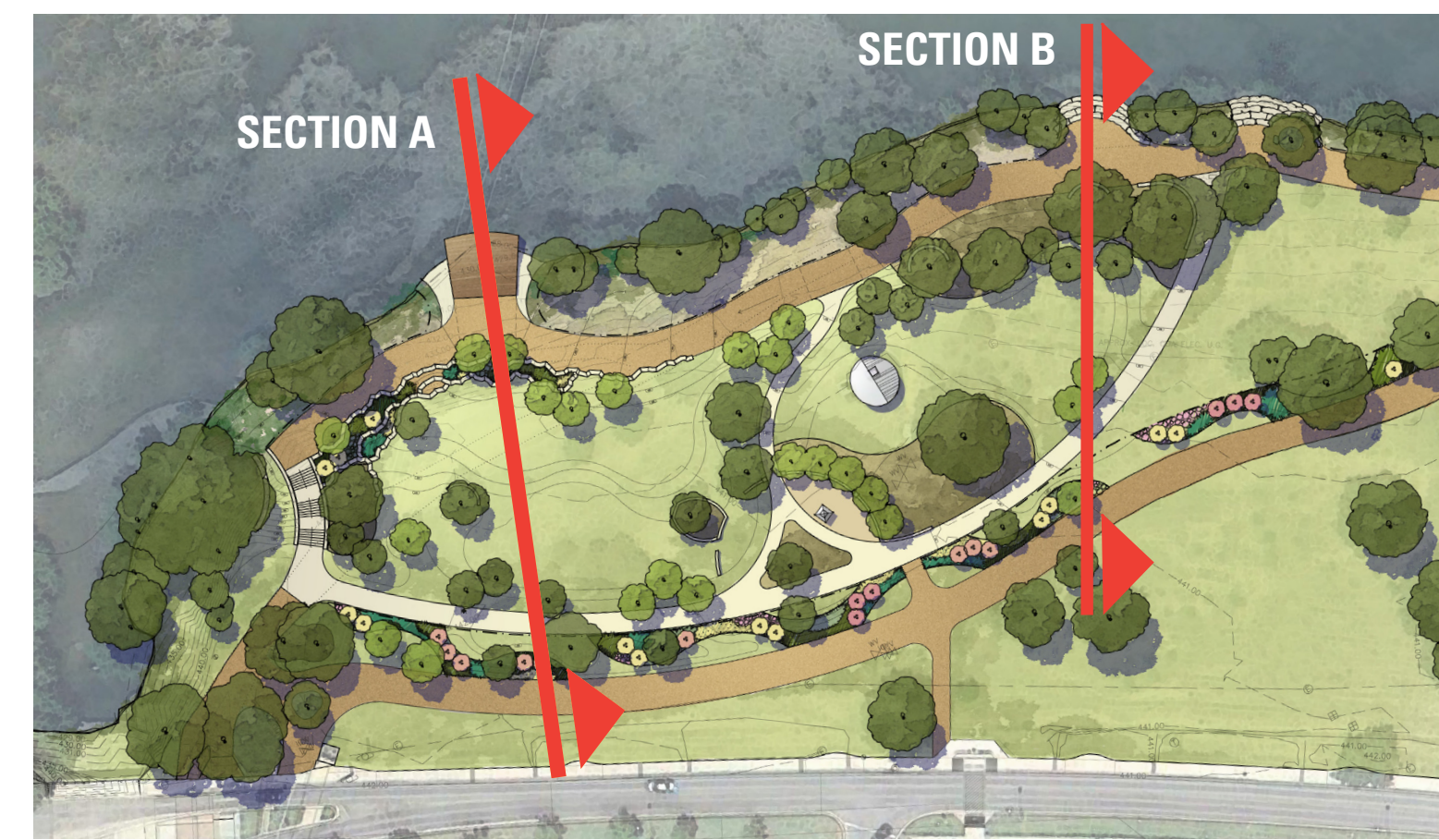
SECTION - Decomposed Granite Path (N.T.S.)



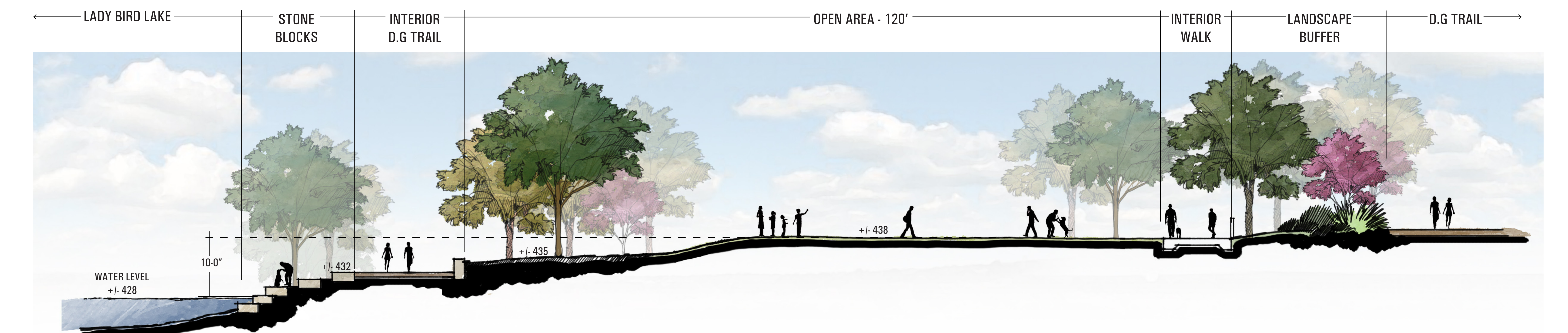
ELEVATION - Split Rail Barrier Fence Option (N.T.S.)



ELEVATION - Cable Barrier Fence Option (N.T.S.)



SECTION A

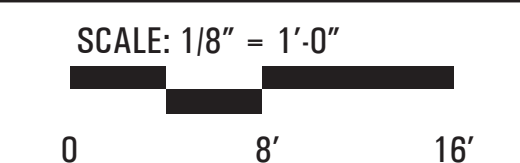


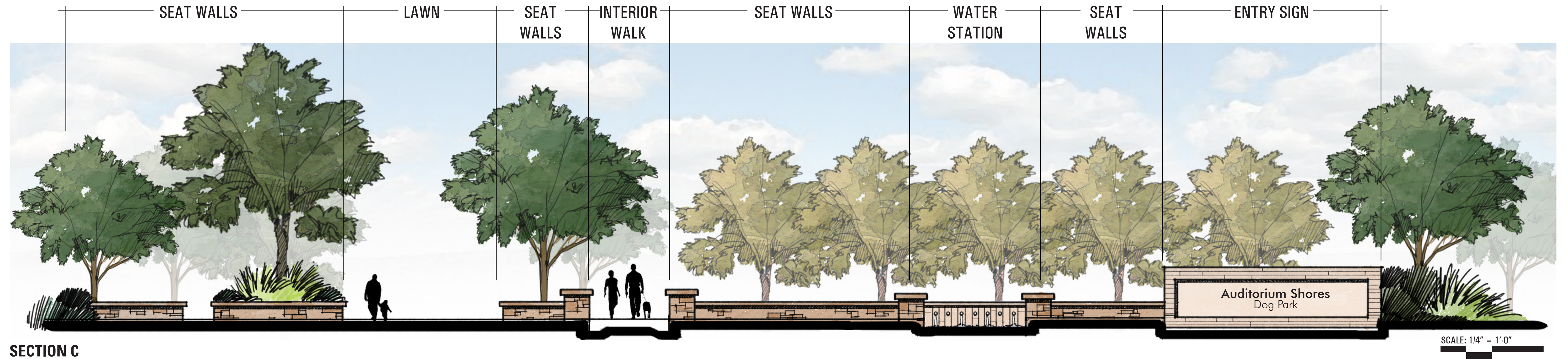
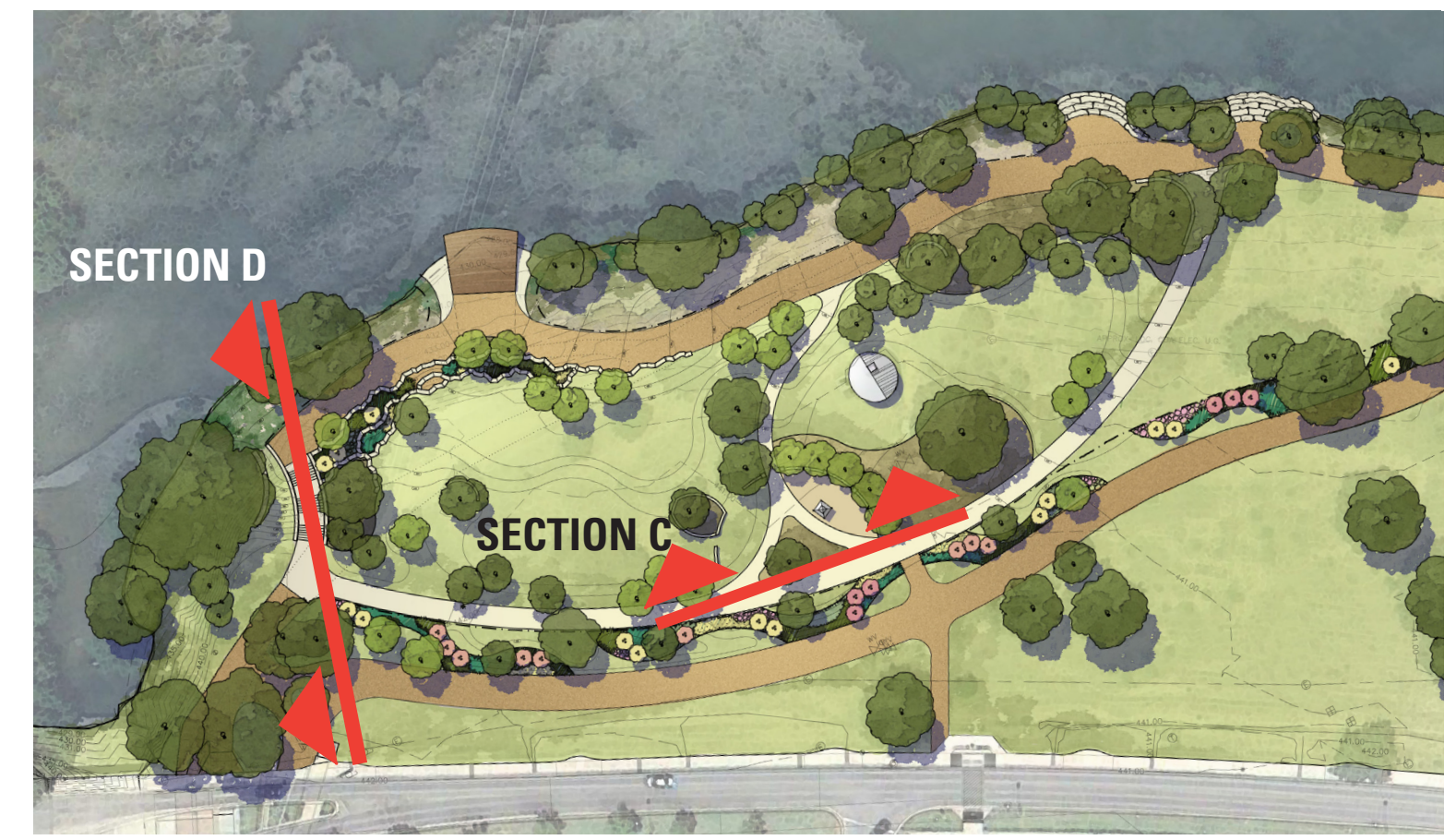
SECTION B

OFF-LEASH AREA - Site Sections

TOWN LAKE PARK - Auditorium Shores Improvements

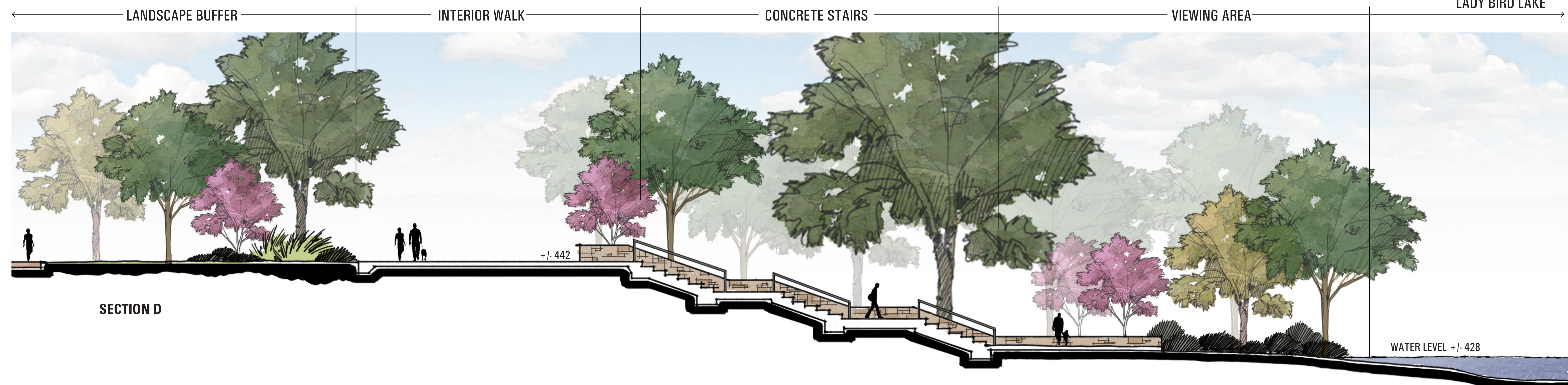
OCTOBER 08, 2013
The information shown is based on the best information available and is subject to change without notice.





SECTION C

SCALE: 1/4" = 1'-0"
0 4' 8'



SECTION D

SCALE: 3/16" = 1'-0"

OFF-LEASH AREA - Site Sections
TOWN LAKE PARK - Auditorium Shores Improvements

OCTOBER 08, 2013
 The information shown is based on the best information available and is subject to change without notice.





PAST MILESTONES

- Briefing to Council - 05-23-2013
- Auditorium Improvements Public Meeting #1 - 07-10-2013
- Auditorium Improvements Public Meeting #2 - 09-28-2013

FUTURE MILESTONES

- Parks and Recreation Board - November 2013
- Planning Commission - December 2013
- City Council Briefing - December 2013
- Approved Permit - January 2014
- Start of Construction - January 2014

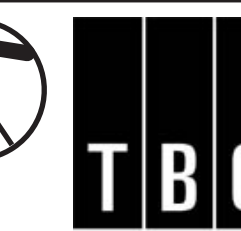
OFF-LEASH AREA - Conceptual Site Plan

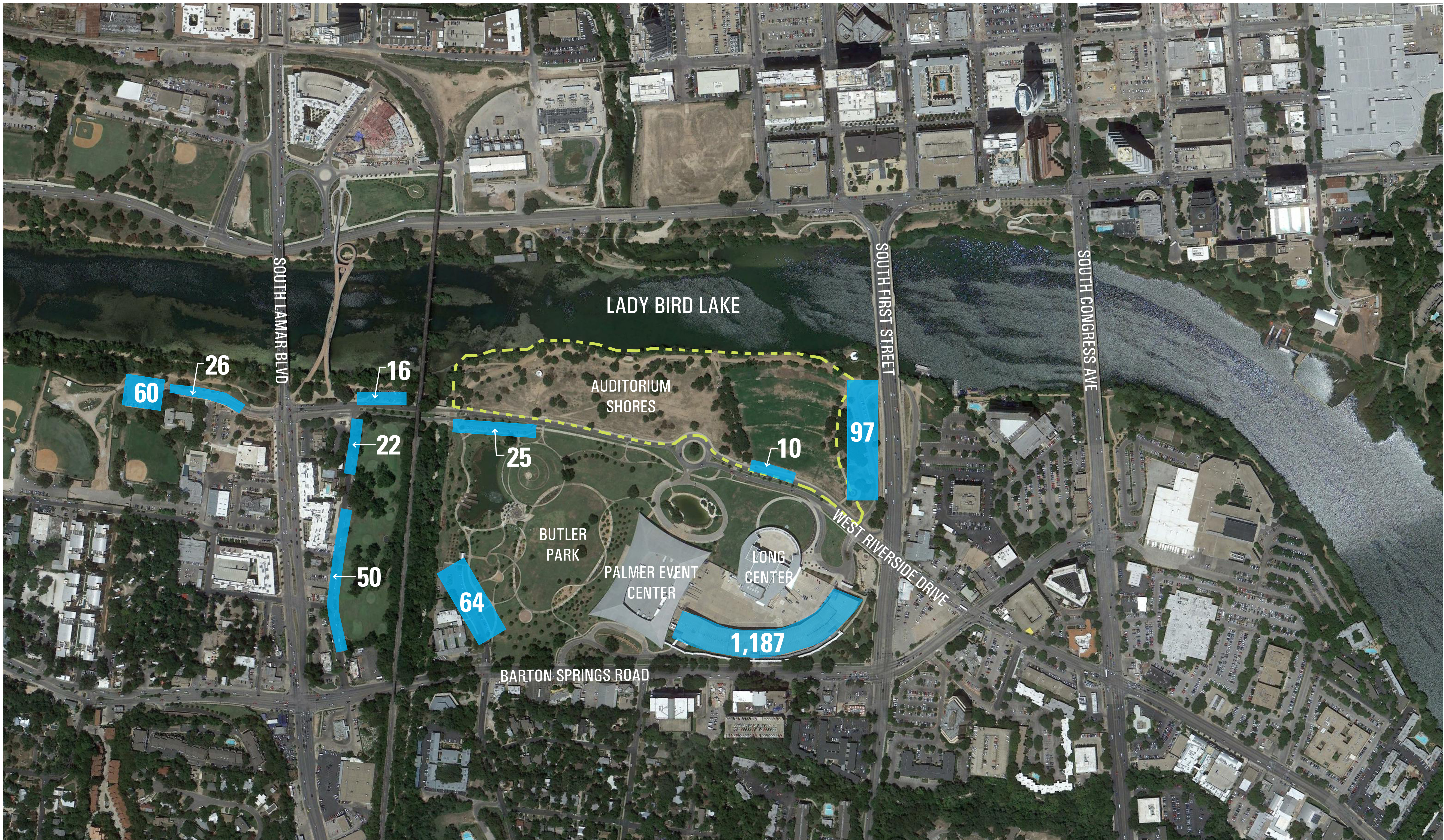
TOWN LAKE PARK - Auditorium Shores Improvements

OCTOBER 08, 2013

The information shown is based on the best information available and is subject to change without notice.

SCALE: 1" = 70'





PARKING OPTIONS

TOWN LAKE PARK - Auditorium Shores Improvements

OCTOBER 08, 2013
 The information shown is based on the best information available and is subject to change without notice.

SCALE: 1" = 200'

0 200' 400'

TBG
PARTNERS