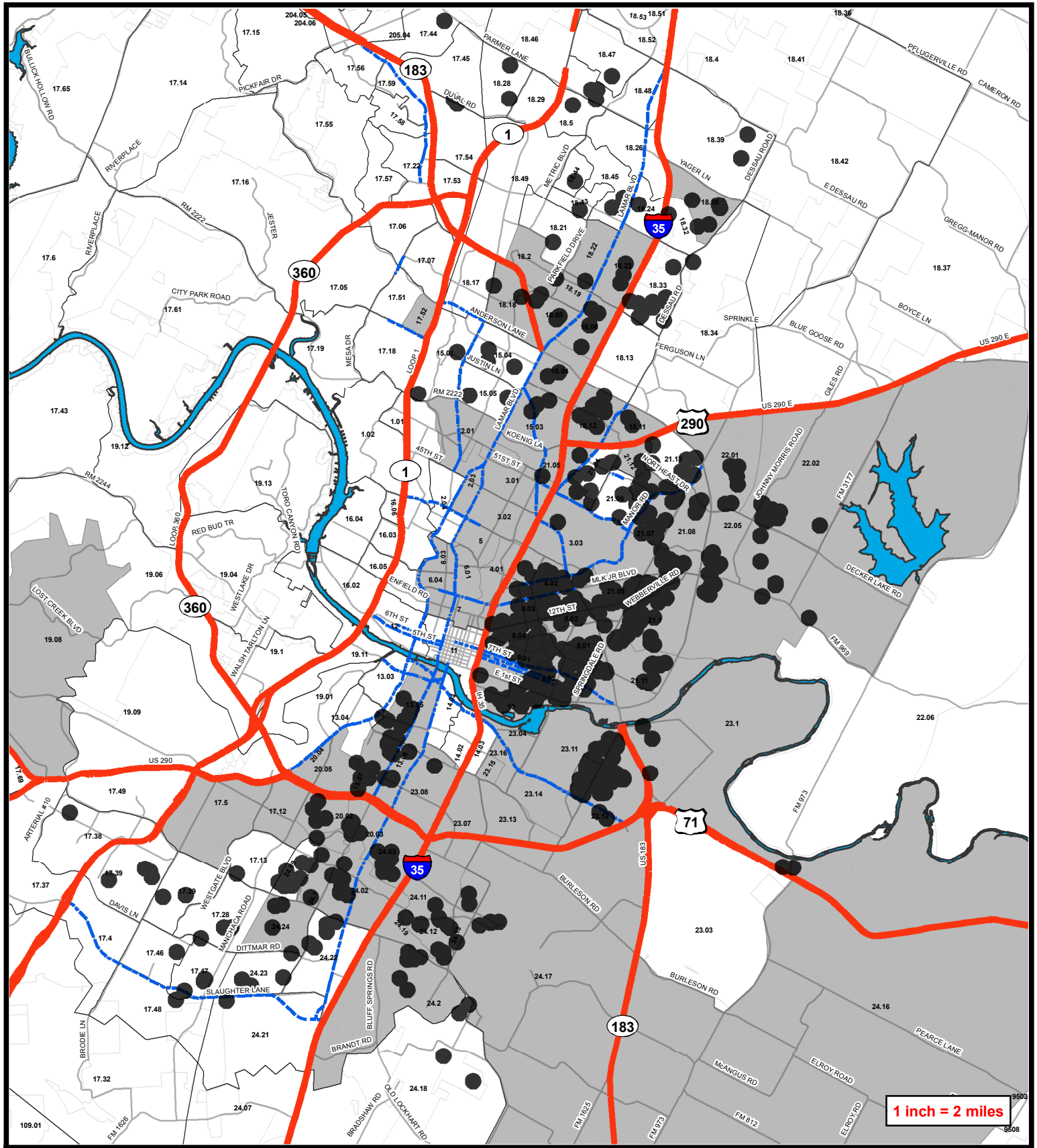
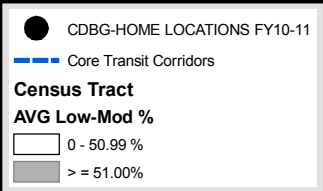


## Appendix IV

### Maps



## Location of CDBG and HOME Expenditures - FY 2010-11



This map has been produced by the Neighborhood Housing and Community Development Office for the sole purpose of geographic reference. No warranty is made by the City of Austin regarding specific accuracy or completeness. Created December 2011

Source(s): City of Austin;  
U.S. Department of Housing and Urban Development-  
FY 2010-11 Expenditure Data and  
U.S. Census Bureau; 2000 Decennial Census

# Location of CDBG - HOME Expenditures and Neighborhood Planning Areas FY 2010-11

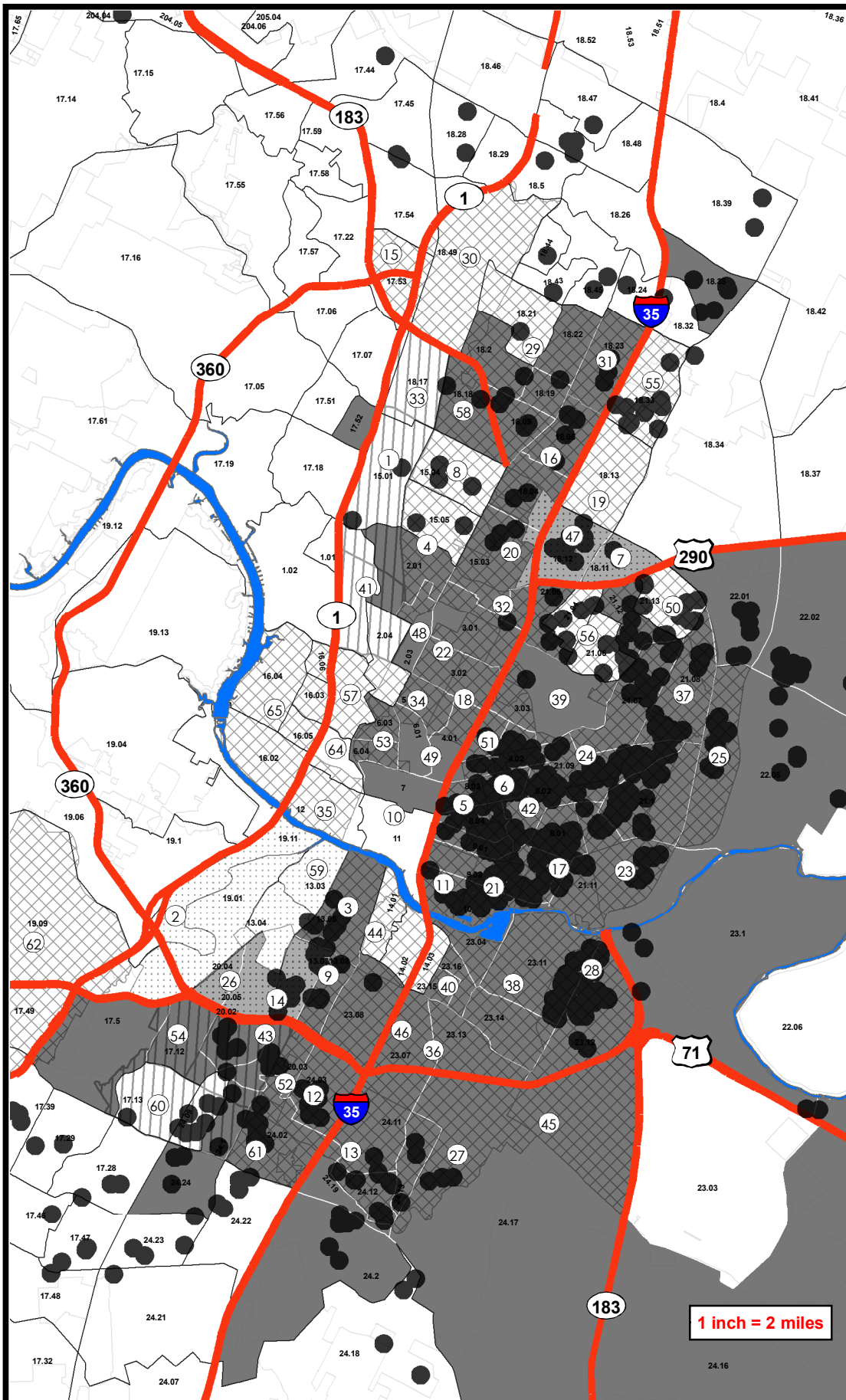
This map has been produced by the Neighborhood Housing and Community Development Office for the sole purpose of geographic reference. No warranty is made by the City of Austin regarding specific accuracy or completeness.

Created December 2011

Source(s): City of Austin;  
U.S. Department of Housing and Urban Development-  
FY 2010-11 Expenditure Data and  
U.S. Census Bureau; 2000 Decennial Census

## ID Neighborhood Plan

- 1 ALLANDALE
- 2 BARTON HILLS
- 3 BOULDIN CREEK
- 4 BRENTWOOD
- 5 CENTRAL EAST AUSTIN
- 6 CHESTNUT
- 7 CORONADO HILLS
- 8 CRESTVIEW
- 9 DAWSON
- 10 DOWNTOWN
- 11 EAST CESAR CHAVEZ
- 12 EAST CONGRESS
- 13 FRANKLIN PARK
- 14 GALINDO
- 15 GATEWAY
- 16 GEORGIAN ACRES
- 17 GOVALLE
- 18 HANCOCK
- 19 HERITAGE HILLS
- 20 HIGHLAND
- 21 HOLLY
- 22 HYDE PARK
- 23 JOHNSTON TERRACE
- 24 MLK
- 25 MLK-183
- 26 SOUTH LAMAR
- 27 MCKINNEY
- 28 MONTOPOLIS
- 29 NORTH AUSTIN CIVIC ASSOCIATION
- 30 NORTH BURNET
- 31 NORTH LAMAR
- 32 NORTH LOOP
- 33 NORTH SHOAL CREEK
- 34 NORTH UNIVERSITY
- 35 OLD WEST AUSTIN
- 36 PARKER LANE
- 37 PECAN SPRINGS-SPRINGDALE
- 38 PLEASANT VALLEY
- 39 RMMA
- 40 RIVERSIDE
- 41 ROSEDALE
- 42 ROSEWOOD
- 43 SOUTH MANCHACA
- 44 SOUTH RIVER CITY
- 45 SOUTHEAST
- 46 ST. EDWARDS
- 47 ST. JOHNS
- 48 TRIANGLE STATE
- 49 UT
- 50 UNIVERSITY HILLS
- 51 UPPER BOGGY CREEK
- 52 WEST CONGRESS
- 53 WEST UNIVERSITY
- 54 WESTGATE
- 55 WINDSOR HILLS
- 56 WINDSOR PARK
- 57 WINDSOR ROAD
- 58 WOOTEN
- 59 ZILKER
- 60 GARRISON PARK
- 61 SWEETBRIAR
- 62 EAST OAK HILL
- 63 WEST OAK HILL
- 64 OLD ENFIELD
- 65 WEST AUSTIN NEIGHBORHOOD GROUP



CDBG HOME Locations FY 10/11



## Neighborhood Plan

### STATUS



FUTURE PLANNING AREA

PLAN APPROVED

PLANNING UNDERWAY/APPROVED TO BEGIN

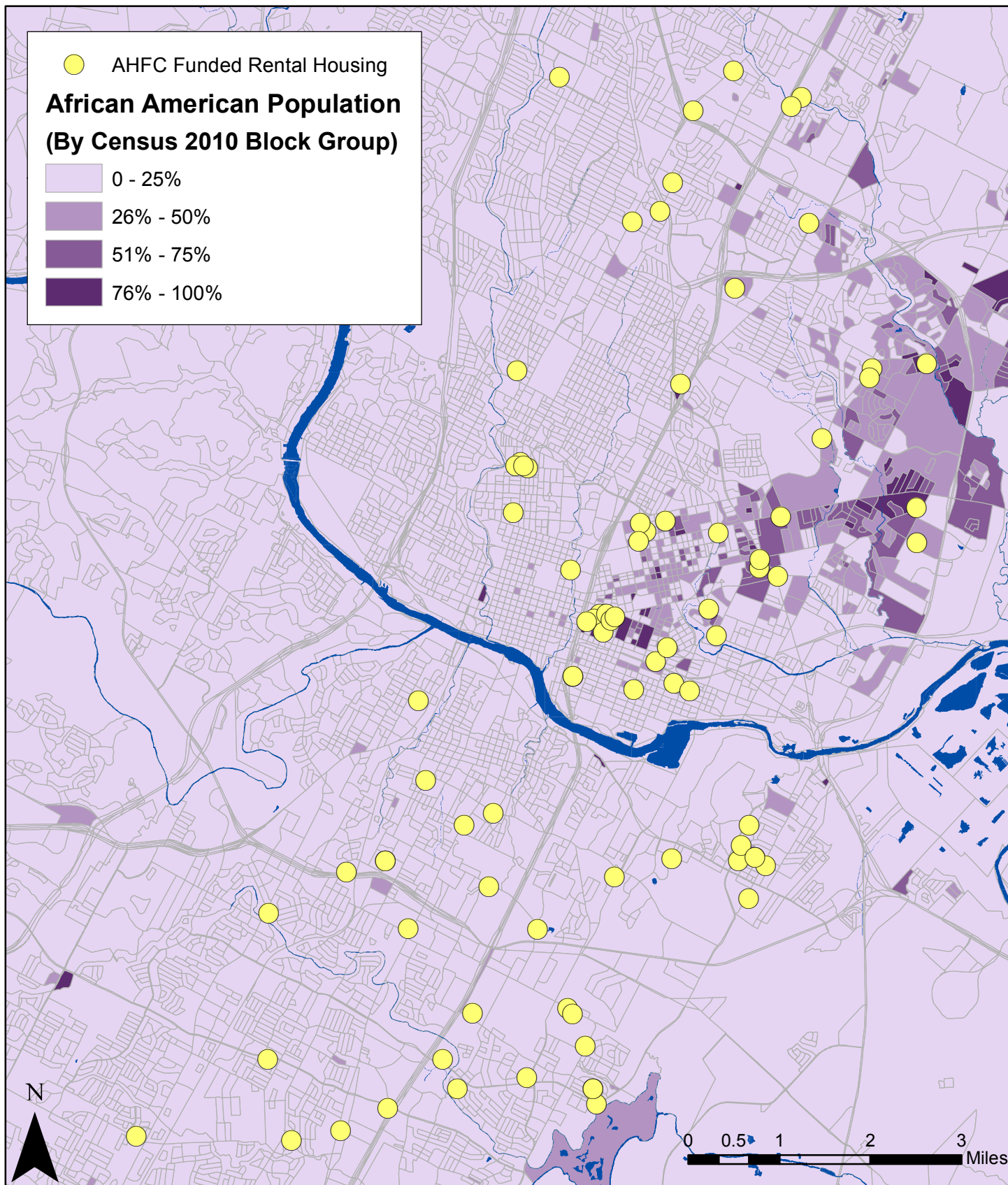
## Census Tract

### AVG Low-Mod %

0 - 50.99 %

> = 51.00%



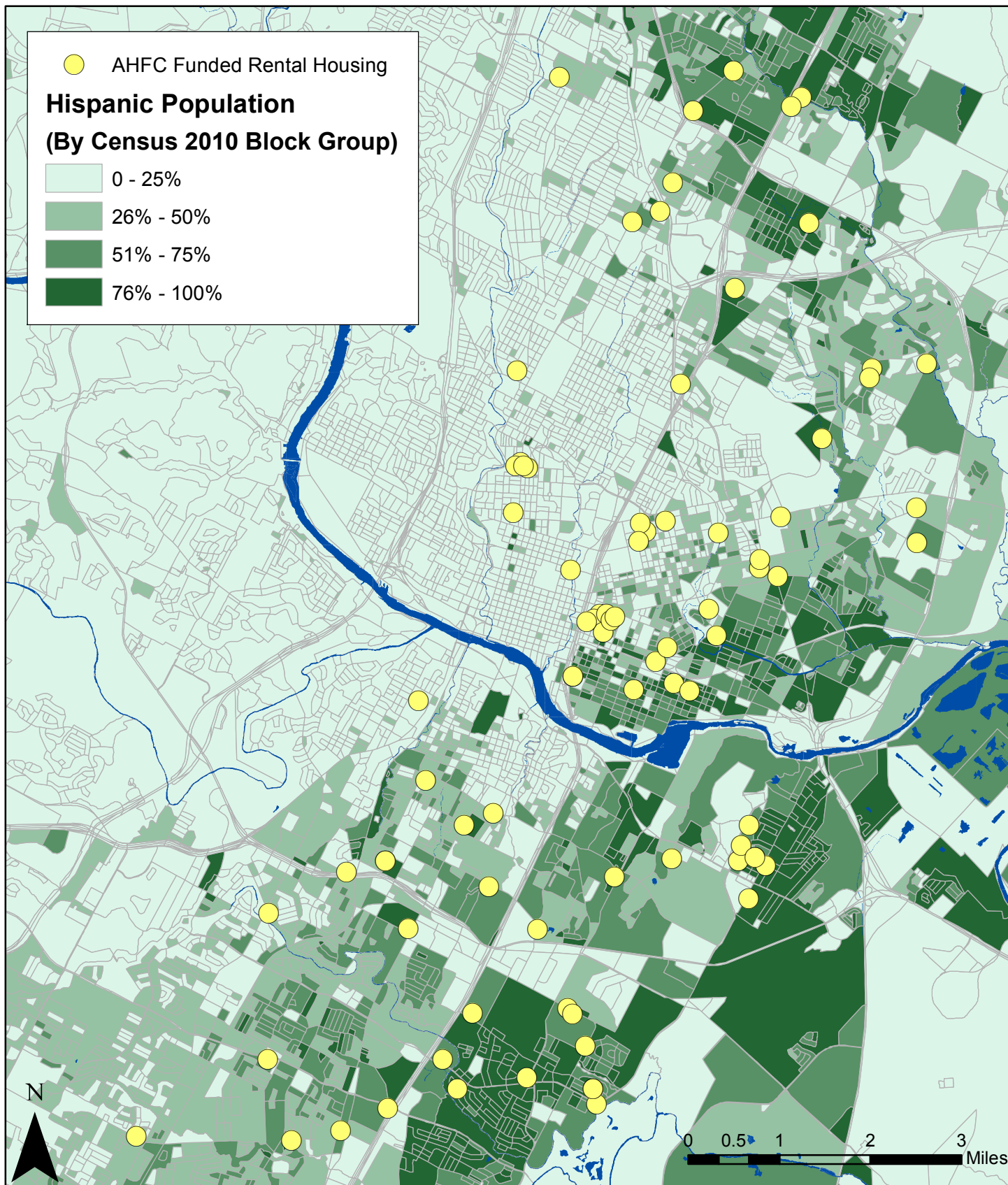


## Geographic Dispersion of Rental Housing Projects by African American Population in the City of Austin

This map has been produced by the City of Austin for the sole purpose of geographic reference.  
No warranty is made by the City of Austin regarding specific accuracy or completeness.  
Map updated December 2011.



Source: Census 2010



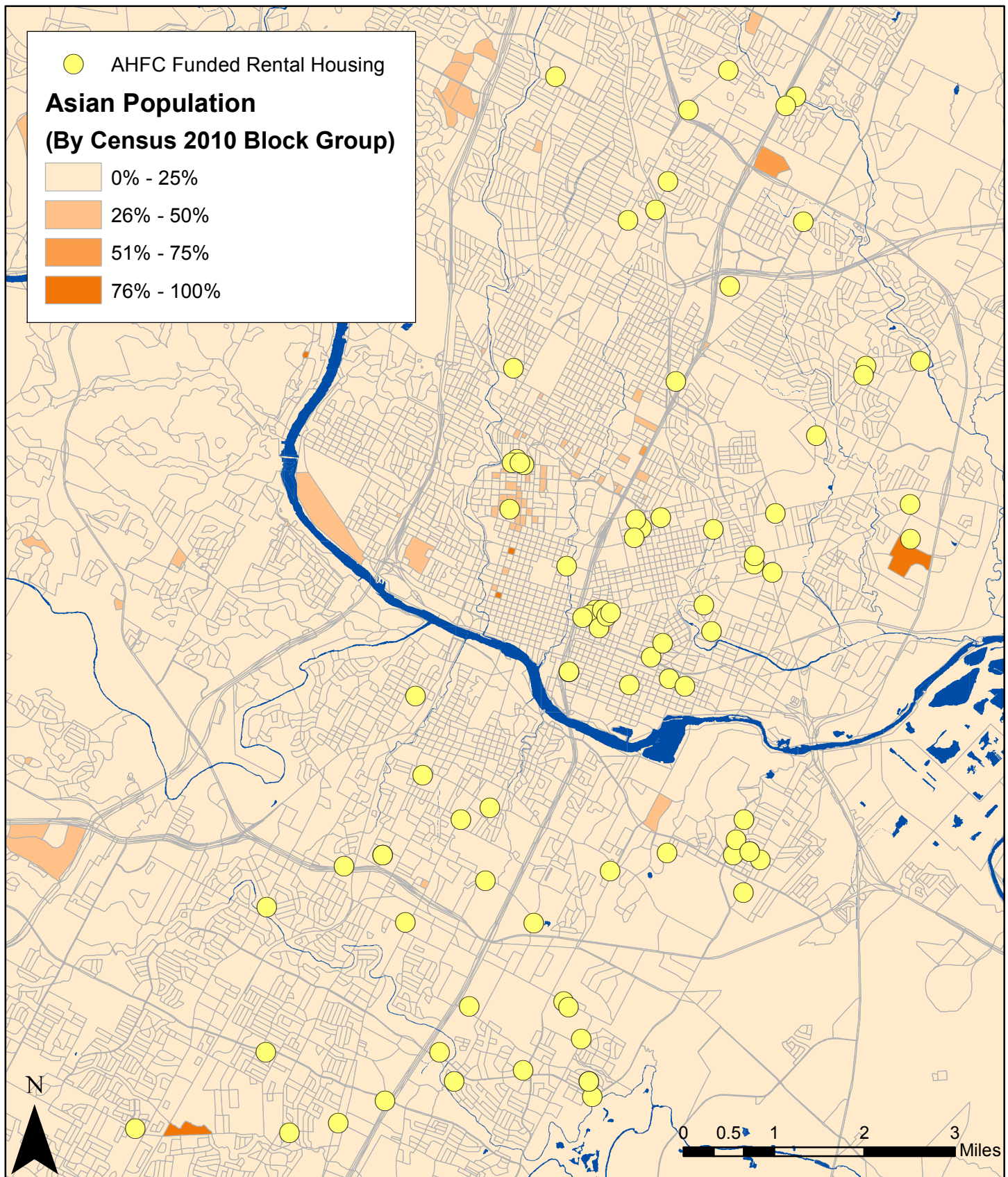
## Geographic Dispersion of Rental Housing Projects by Hispanic Population in the City of Austin

This map has been produced by the City of Austin for the sole purpose of geographic reference. No warranty is made by the City of Austin regarding specific accuracy or completeness. Map updated December 2011.



Source: Census 2010





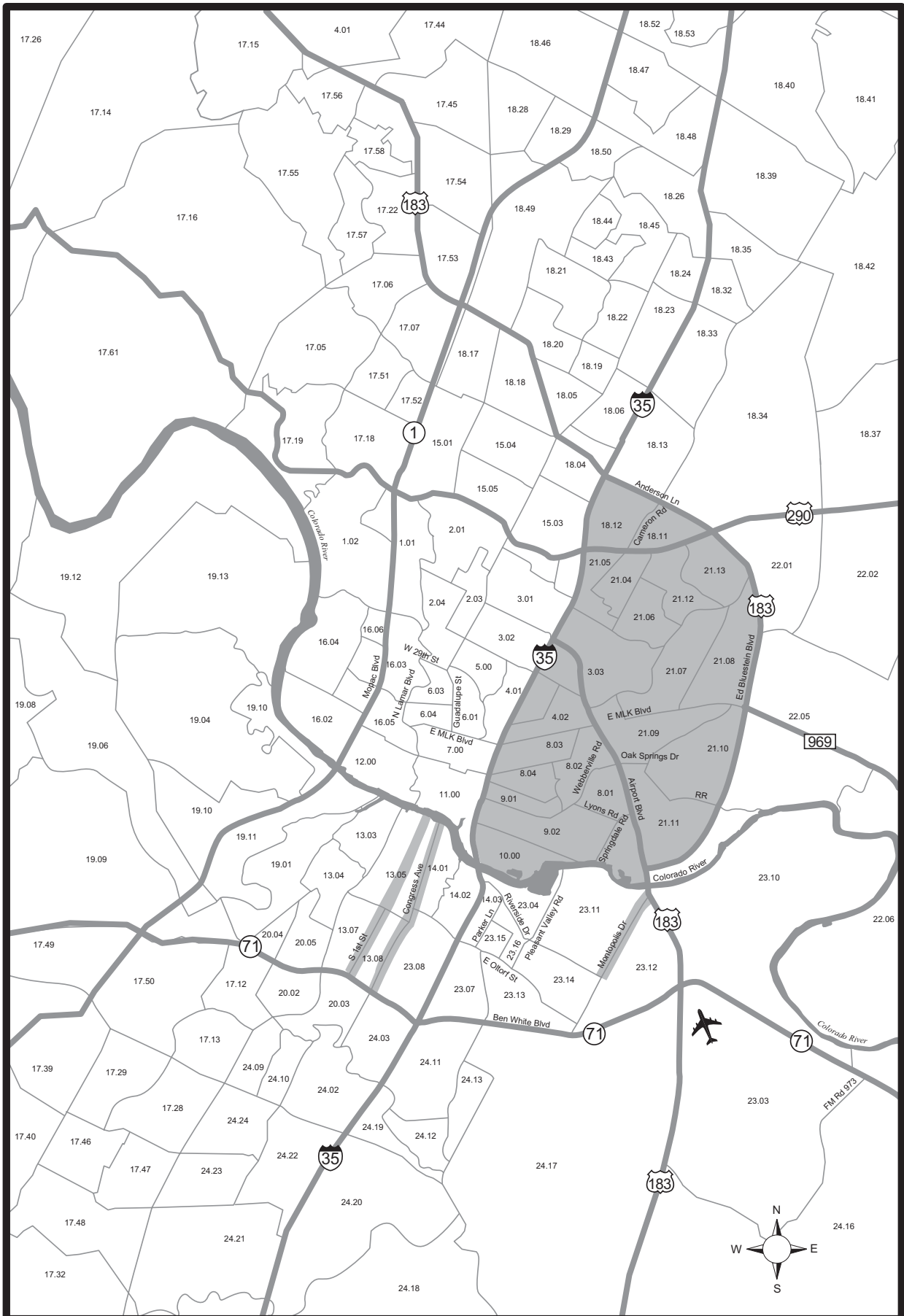
## Geographic Dispersion of Rental Housing Projects by Asian Population in the City of Austin

This map has been produced by the City of Austin for the sole purpose of geographic reference. No warranty is made by the City of Austin regarding specific accuracy or completeness. Map updated December 2011.



Source: Census 2010

# Neighborhood Commercial Management Program Priority Areas

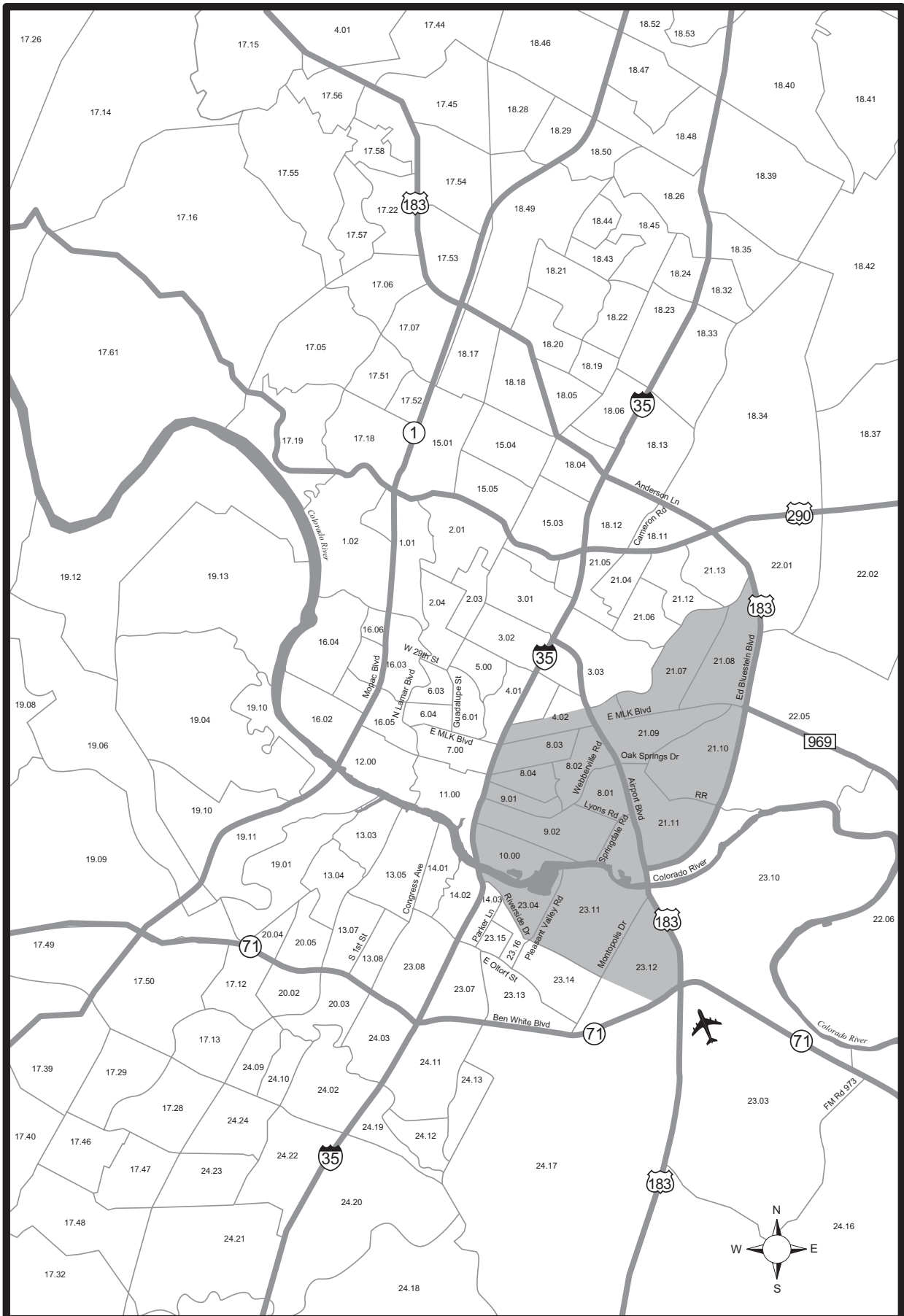


Includes portions of South Congress, South 1st Street and Montopolis.

Source: 2000 Census

The City of Austin is statutorily required to designate priority areas for commercial management.

# Commercial Preservation and Revitalization Area (CP&R)



Source: 2000 Census