

Vision Zero Traffic Safety Task Force

September 18, 2015



VISION ZERO

any traffic death is too many

Today's Presentation

- Background on V0
- Top Contributing Factors
- Changes to draft Vision
- Activity:
 - Review draft Action Plan & make recommendations on actions for top factors
 - Review top contributing factors maps – where should we focus?
- Next Steps

**Over 700 total traffic fatalities
since 2004**

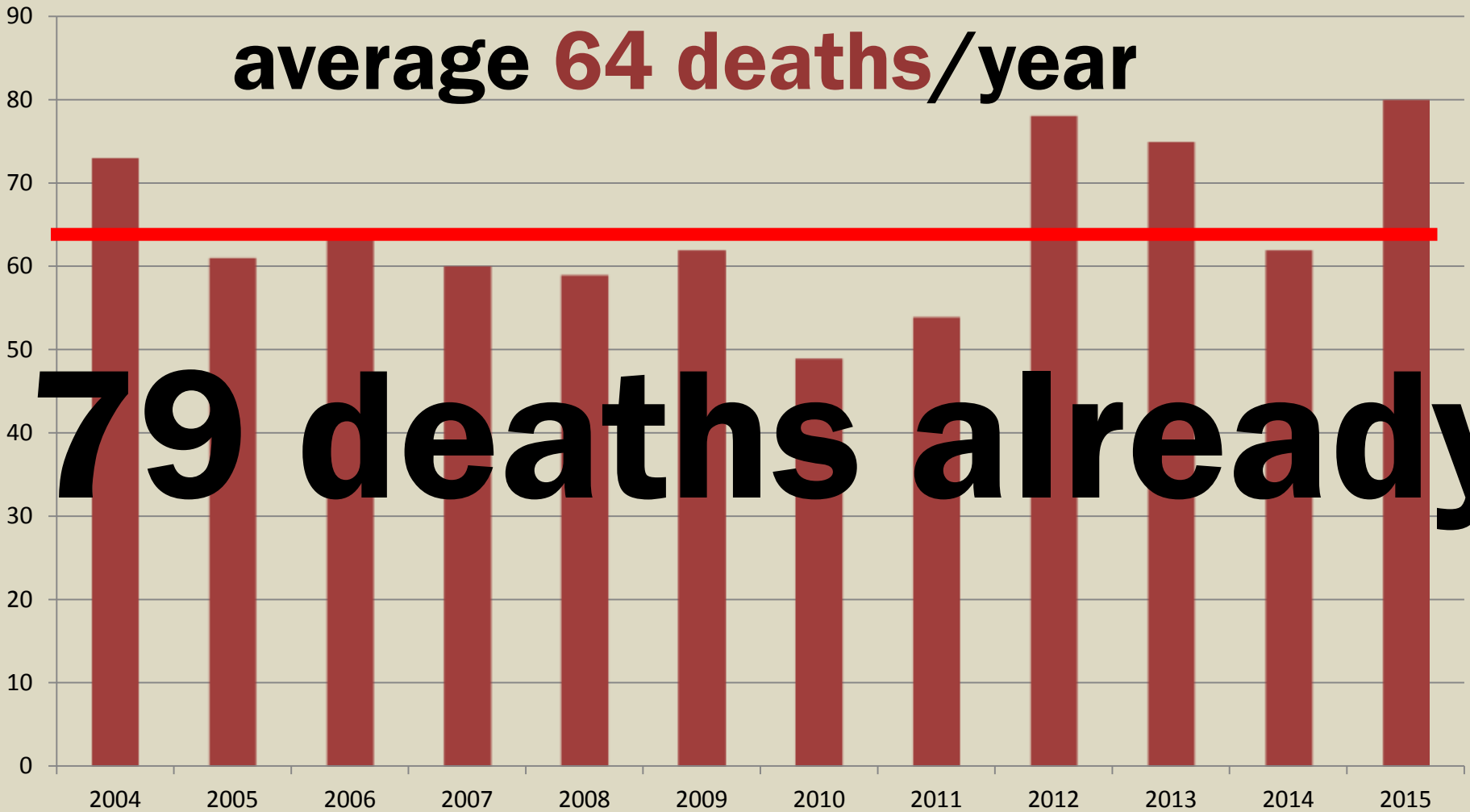
**Austin is the 13th most dangerous
city for cities over 500K**

**Austin is the 7th most dangerous
city for people walking**

Austin traffic deaths

average 64 deaths/year

79 deaths already



Source: City of Austin Annual Crime and Traffic Reports



Traffic injuries & deaths are
preventable; therefore
none are acceptable



People will make mistakes;
those mistakes shouldn't
be fatal



Safety is the **primary**
consideration in transportation
decision-making



Traffic safety solutions must be addressed **holistically** through **education, enforcement, engineering/design**

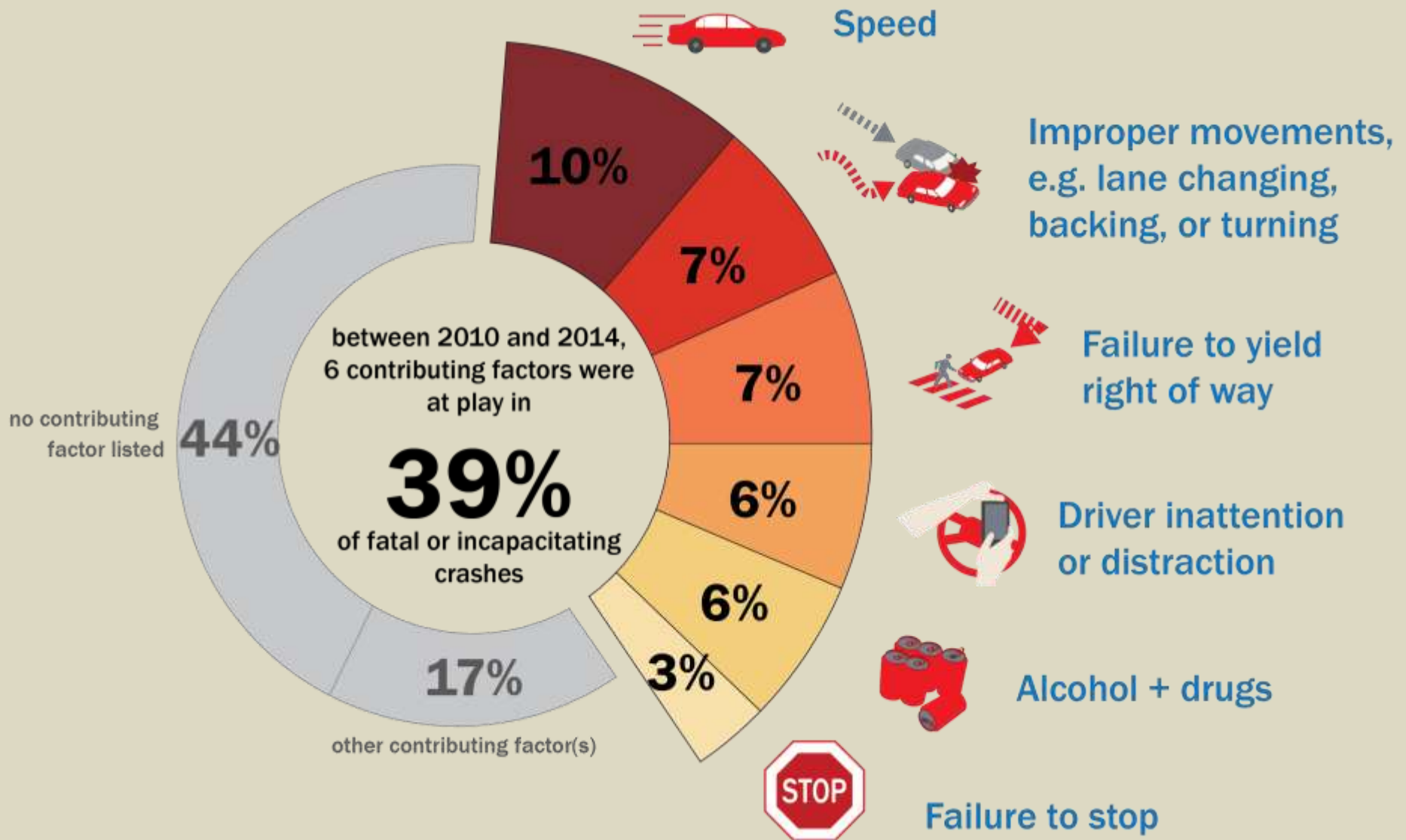


aims to achieve **zero deaths**
& zero serious injuries
while traveling in Austin

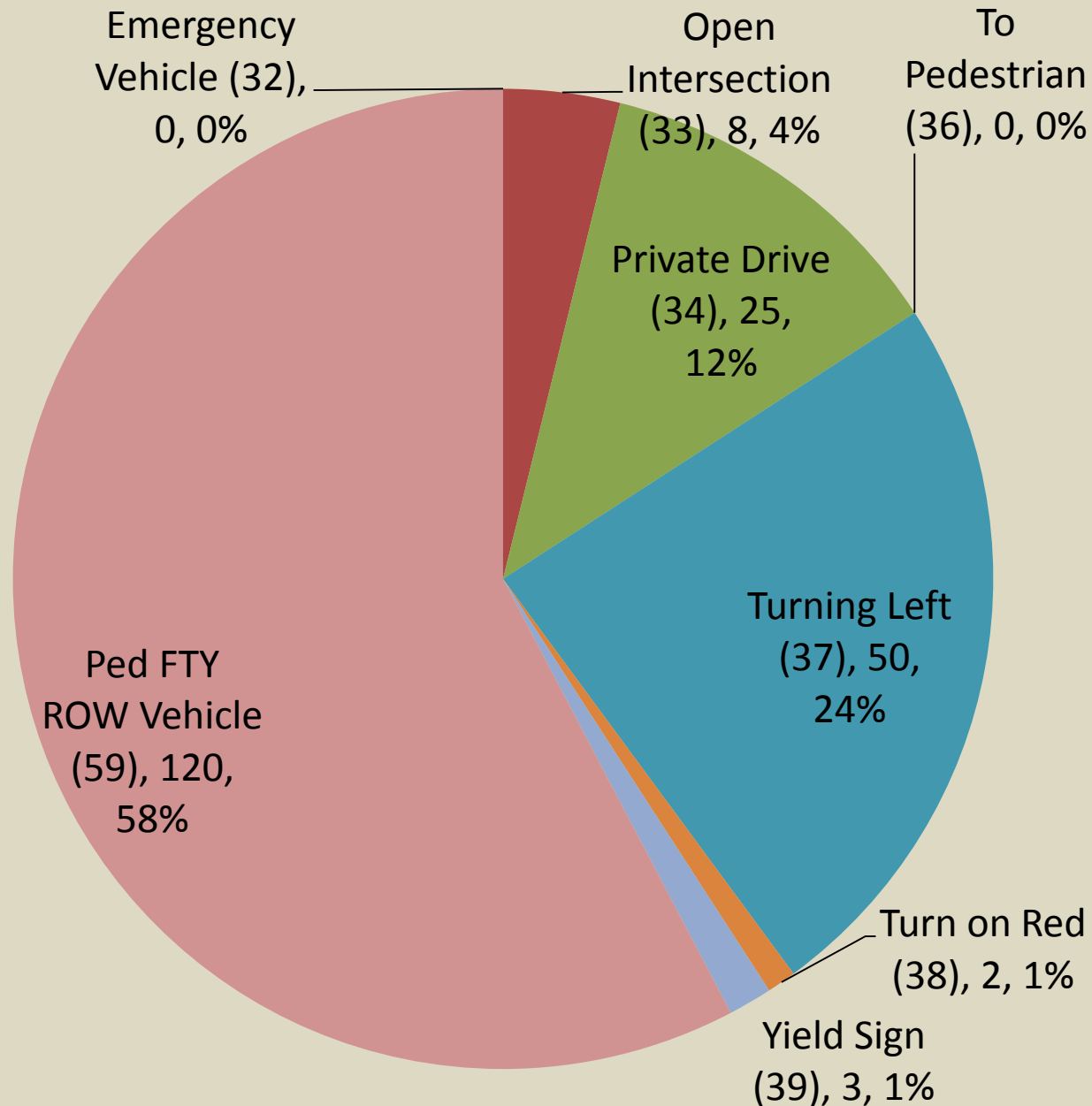
Previous meetings



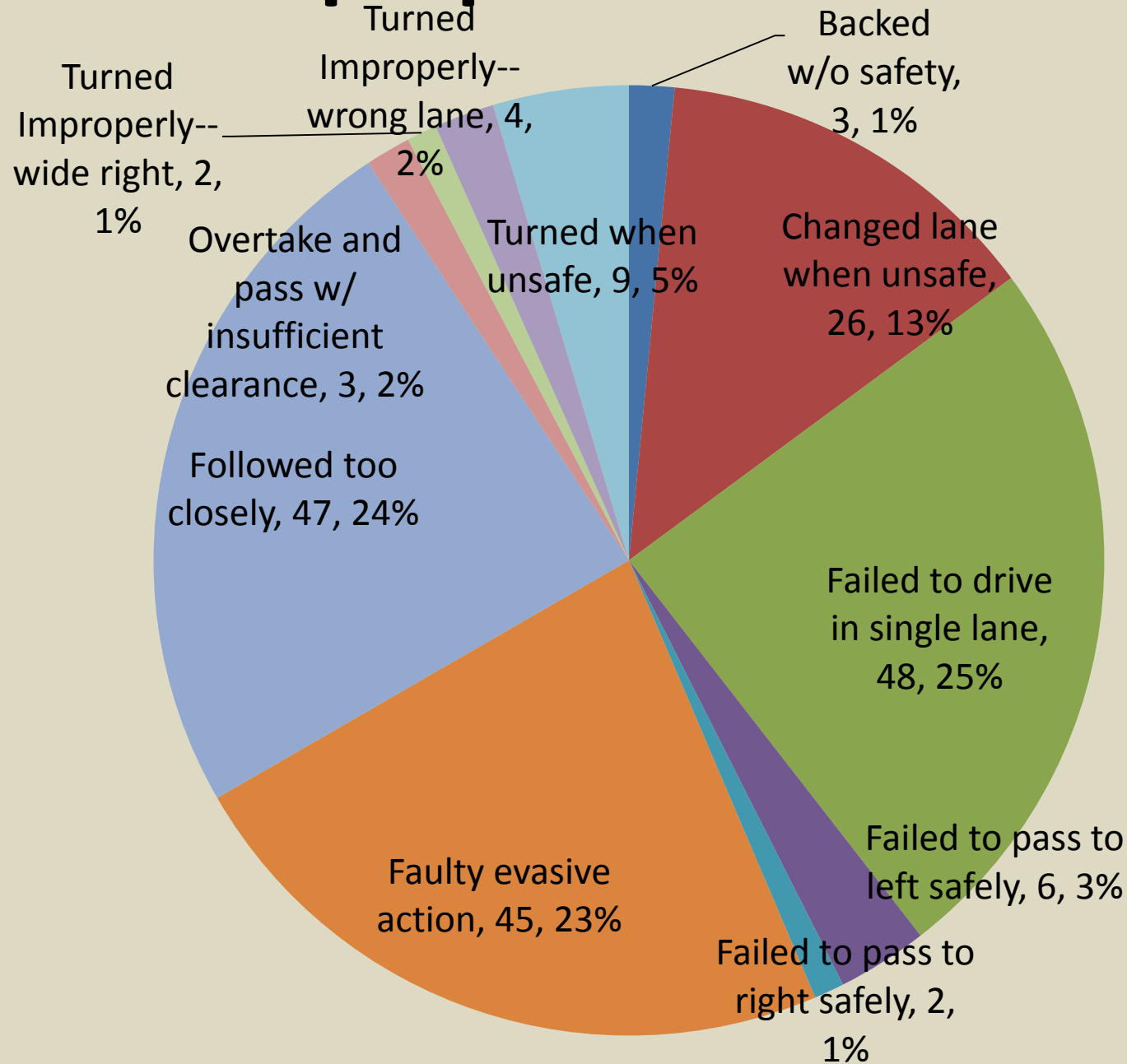
Revised **Top Causes** of fatal or incapacitating crashes



Failure to Yield



Improper Maneuvers



Overview of 2 activities

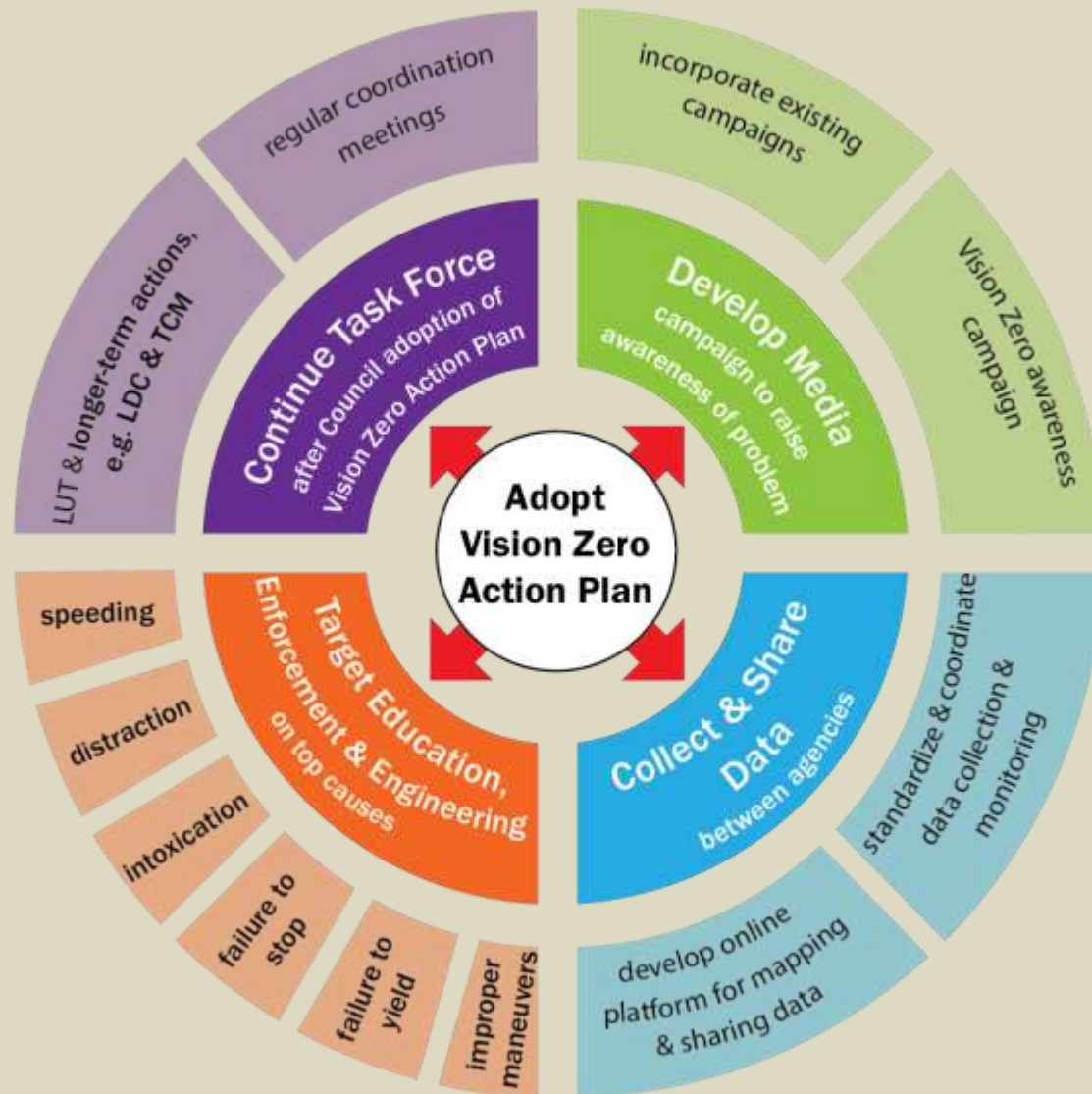
Activity 1: Review draft Action Plan

- Focus on Key Actions.

Activity 2: Review draft Top Contributing Factors Maps

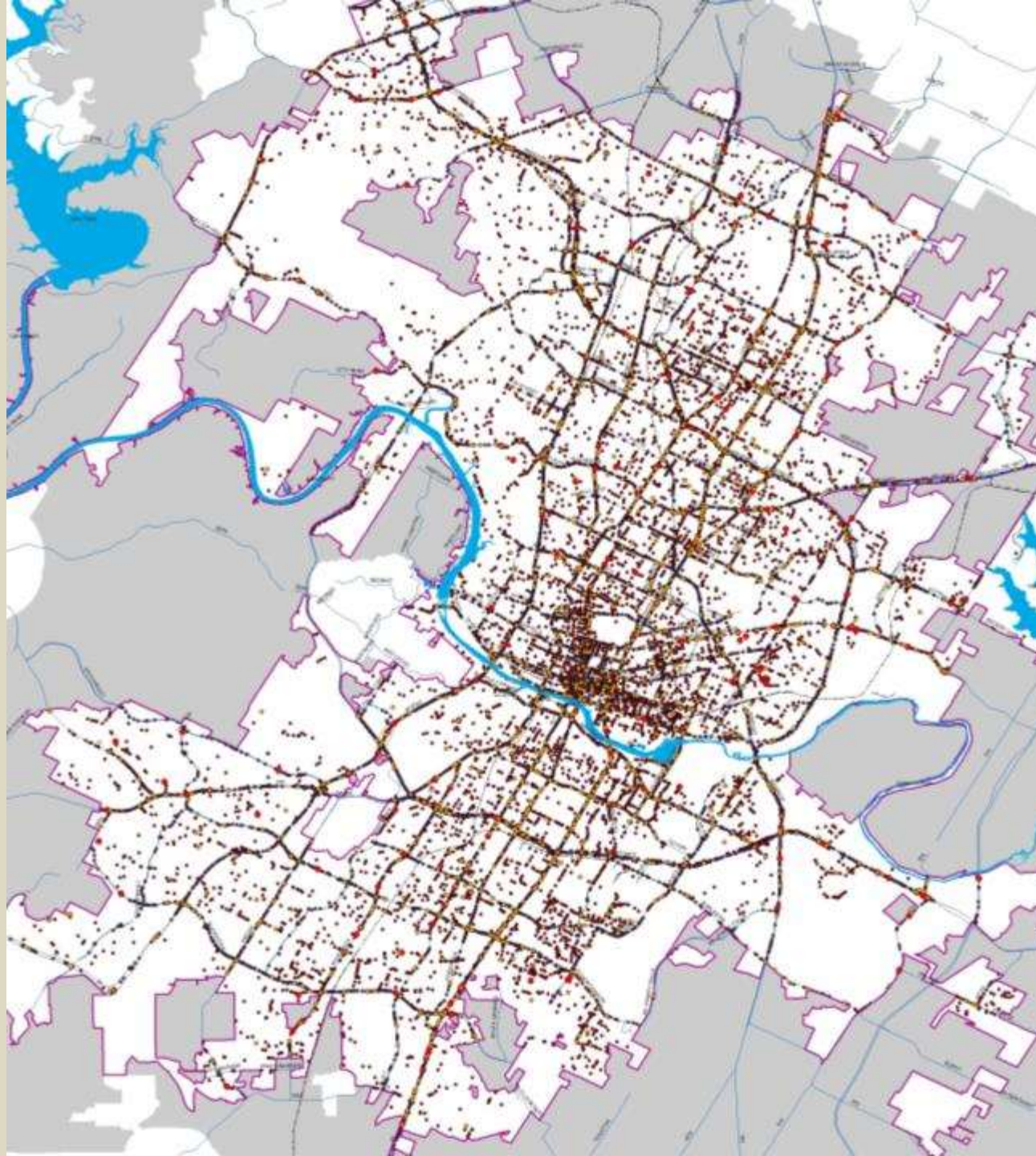
- What are your takeaways?
- What are the broad actions that should be included in the Action Plan?

Activity 1: Review Key Actions



Draft Crash Maps





- Fatality and injury data for ATX from TXDOT
- Fatalities mapped as points
- Fatalities + injuries converted to a heat map showing the concentration of injury and fatal collisions



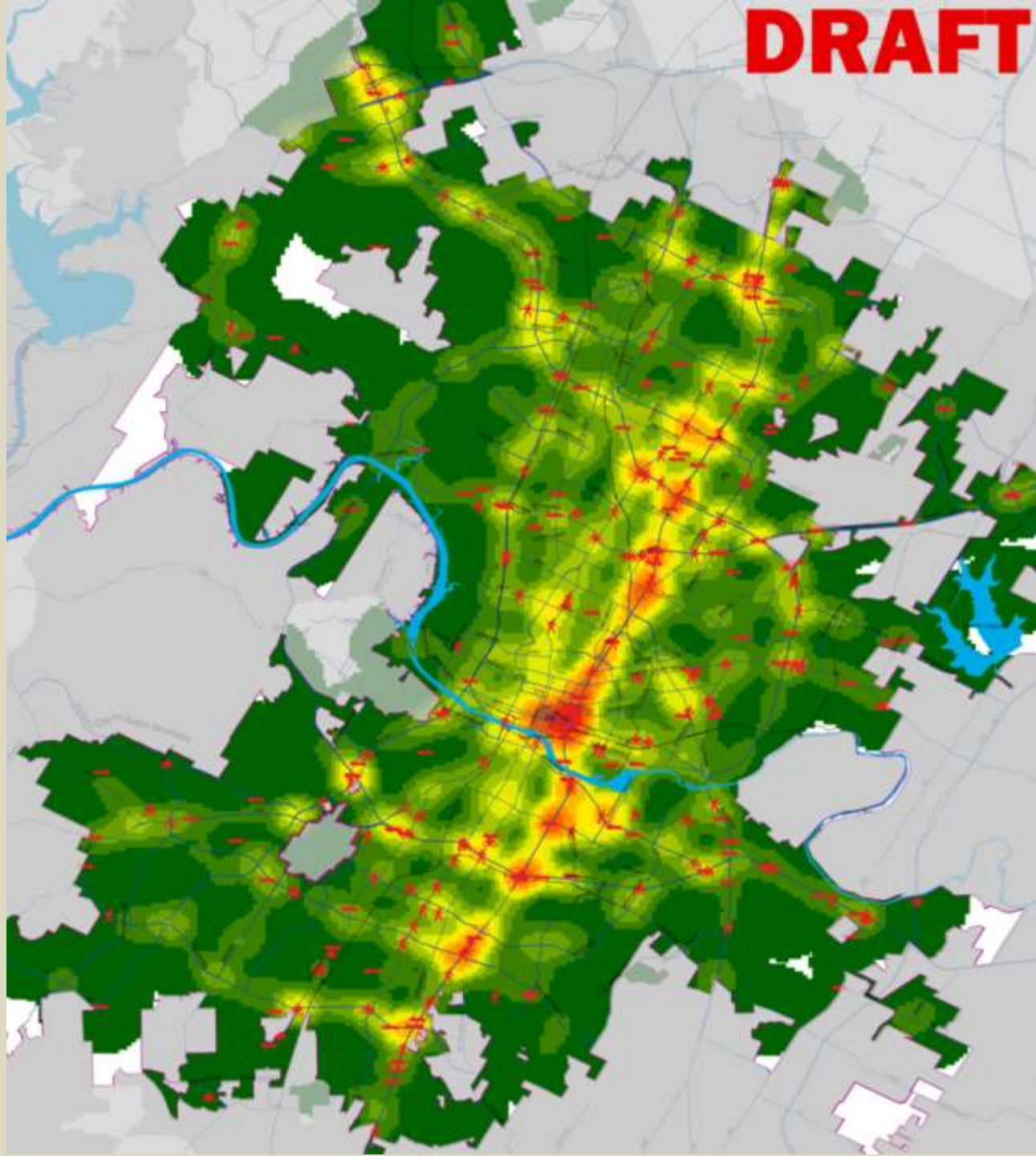
Draft Heat Maps

DRAFT

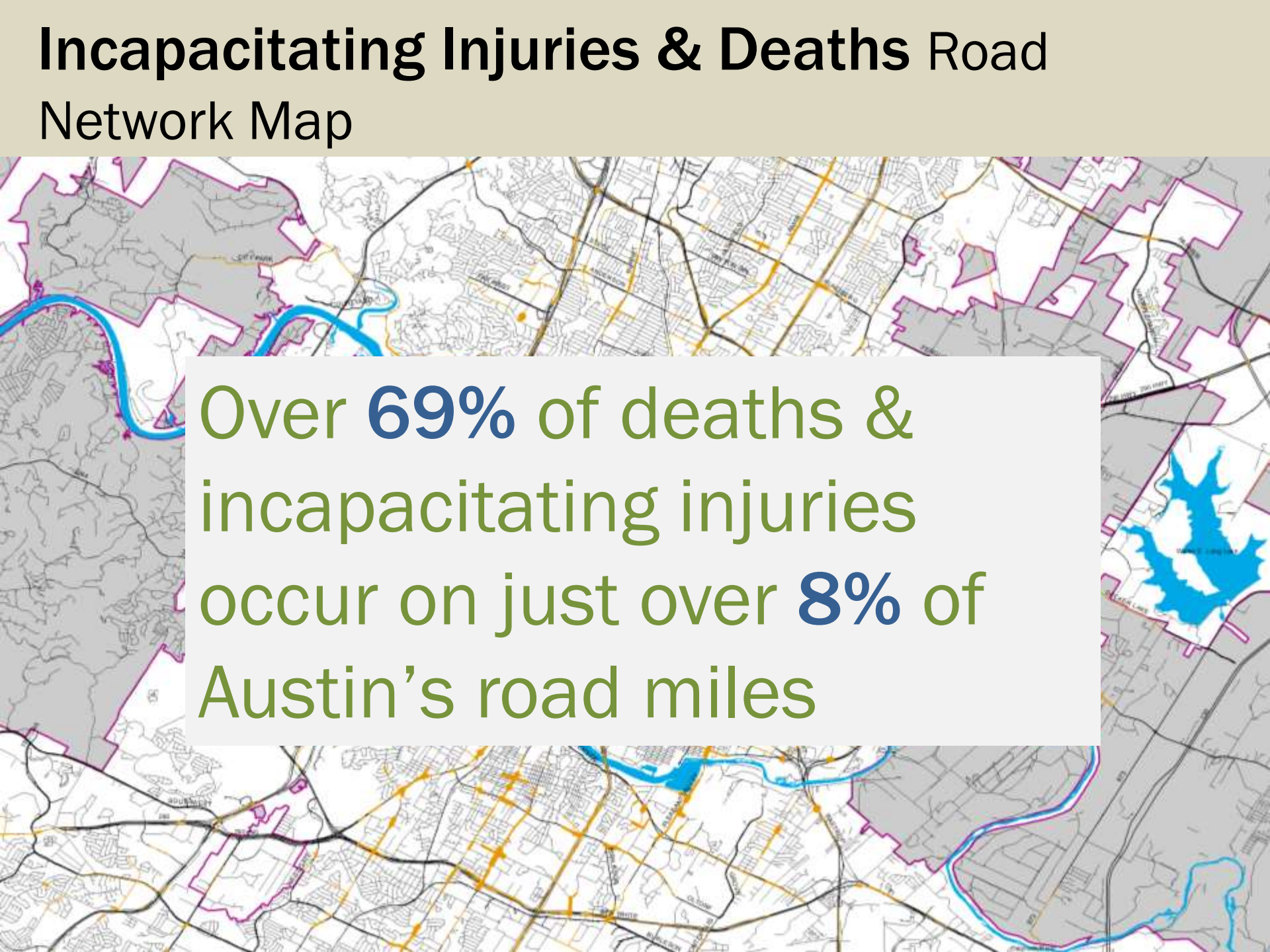
Deaths by mode

-  driving (145)
-  walking (91)
-  motorcycle (59)
-  biking (7)

Concentration of injuries & deaths



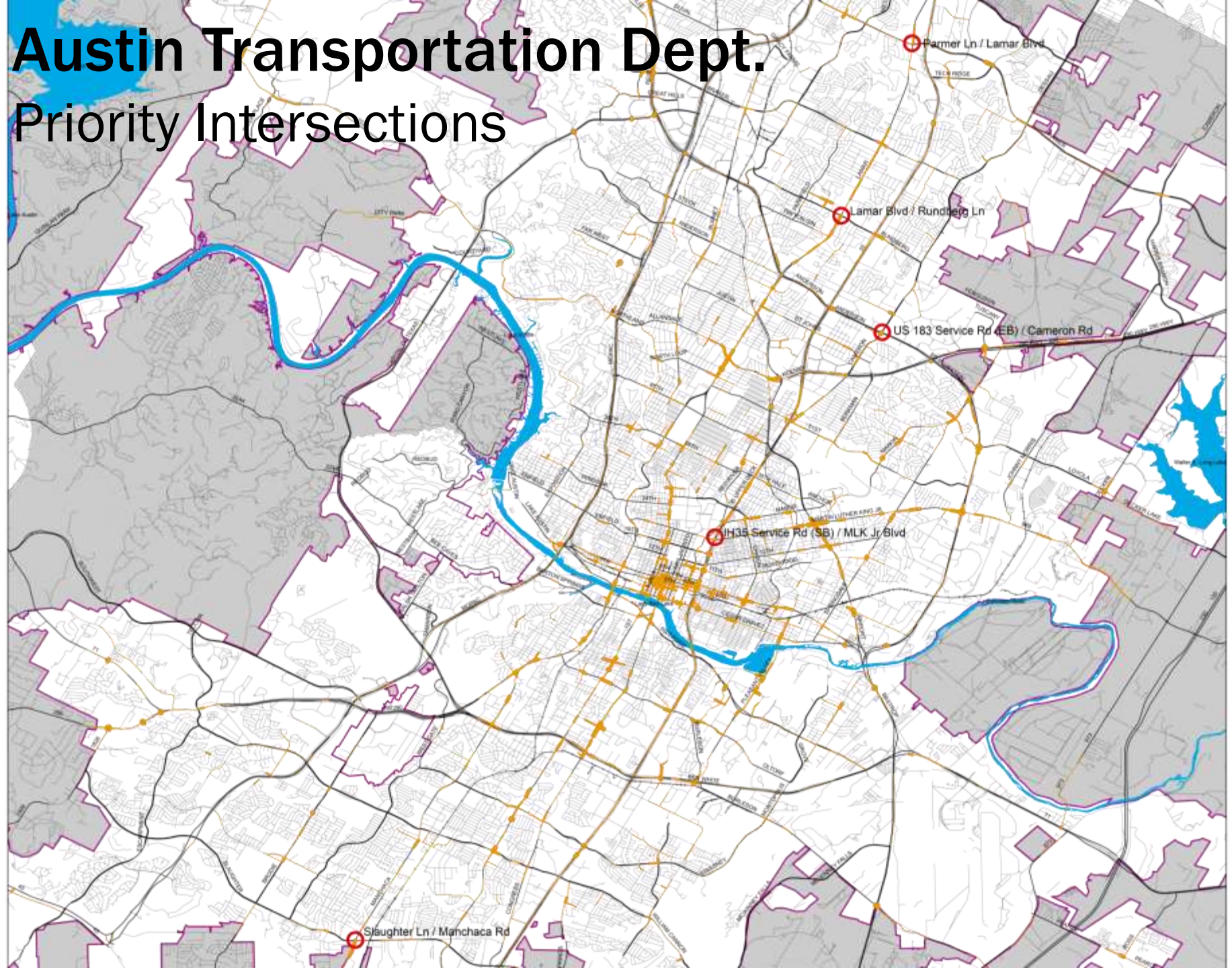
Incapacitating Injuries & Deaths Road Network Map

A detailed map of Austin, Texas, showing the road network. Major roads are highlighted in yellow and orange, while smaller roads are in grey. Water bodies, including the Colorado River and Lake Travis, are shown in blue. The map is overlaid with a semi-transparent white box containing text.

Over **69%** of deaths & incapacitating injuries occur on just over **8%** of Austin's road miles

Austin Transportation Dept.

Priority Intersections



Activity 2: Review Draft Top Contributing Factors Maps

e.g. Speed

