

Injury & Fatal Crashes **Driving** (2010-2014)

Source: TXDOT 2010 - 2014 Standard File Extract, City of Austin jurisdiction

VISION

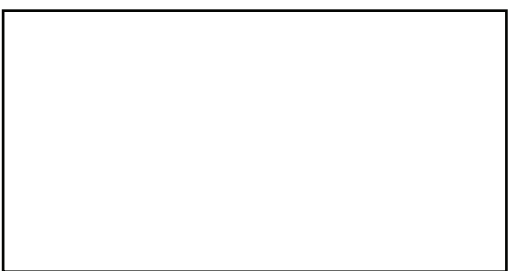
ZERO

any traffic death is too many

Deaths by mode

driving (145)

Concentration of injuries & deaths



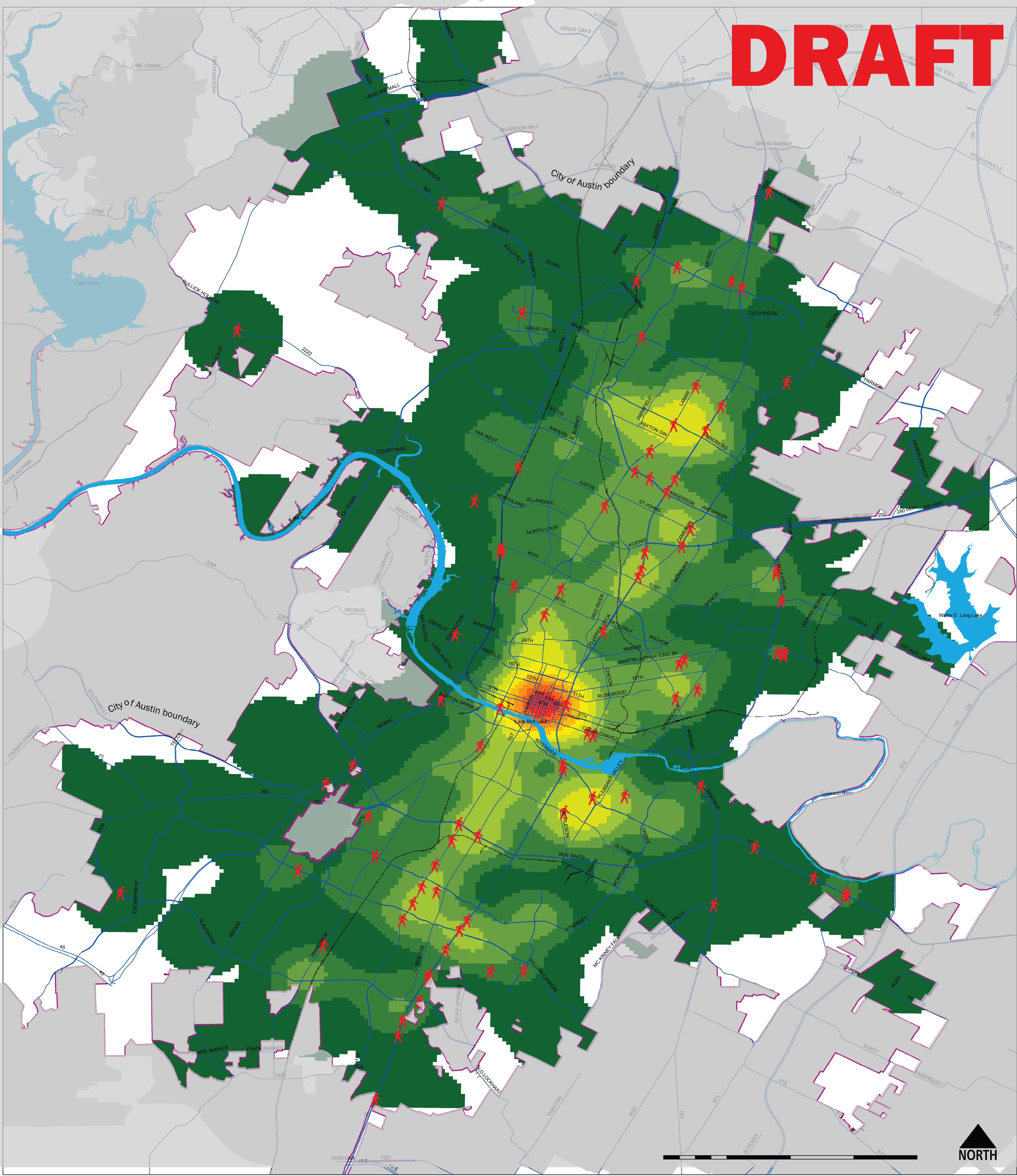
No injuries  
or deaths



Low

High





Injury & Fatal Crashes Walking (2010-2014)

Source: TXDOT 2010 - 2014 Standard File Extract, City of Austin jurisdiction

VISION

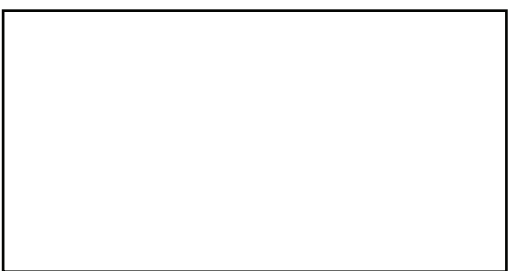
ZERO

any traffic death is too many

Deaths by mode

walking (91)

Concentration of injuries & deaths



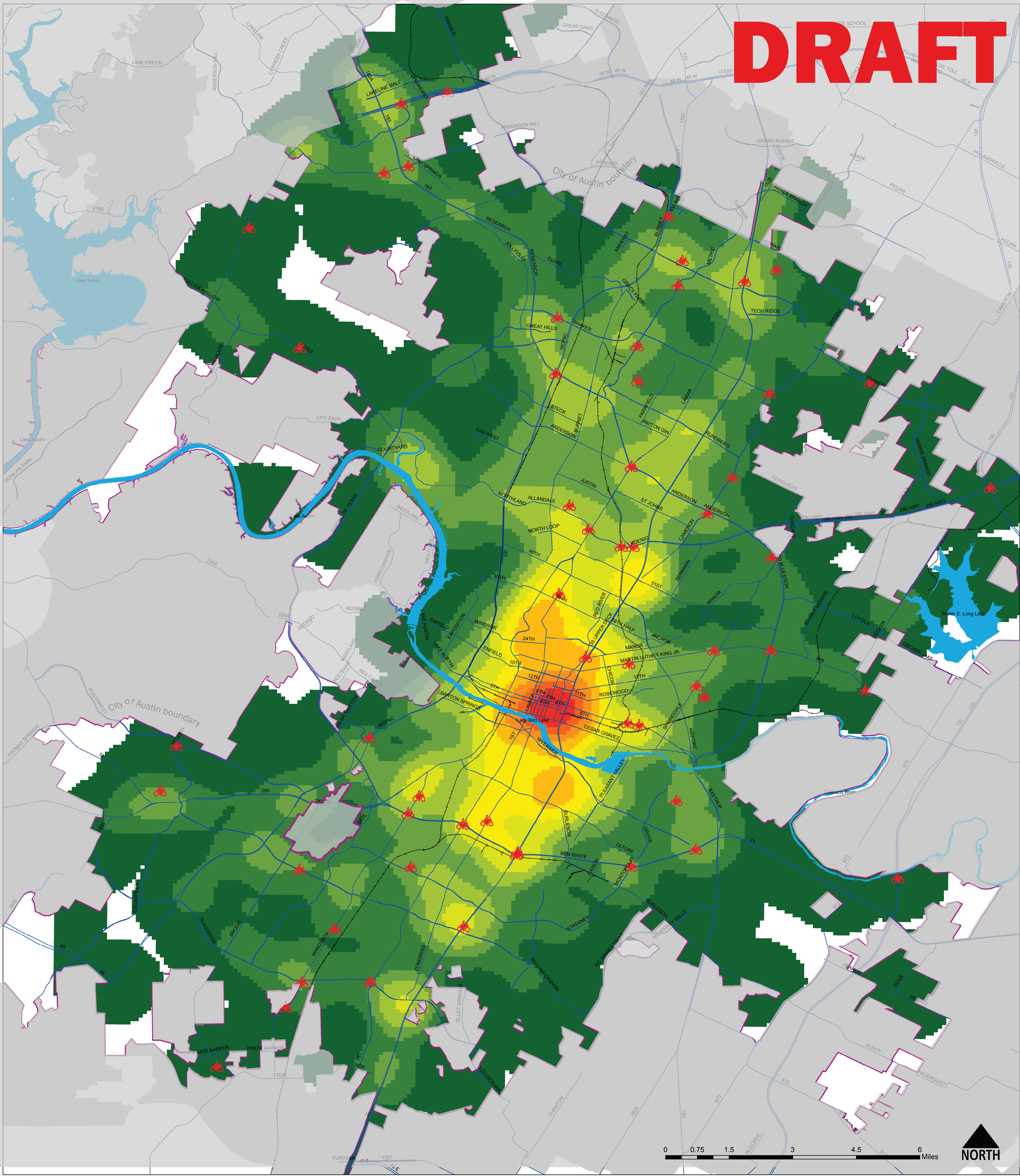
No injuries  
or deaths



Low

High





Injury & Fatal Crashes **Motorcycles** (2010-2014)

Source: TXDOT 2010 - 2014 Standard File Extract, City of Austin jurisdiction

VISION

ZERO

any traffic death is too many

Deaths by mode

motorcycle (59)

Concentration of injuries & deaths



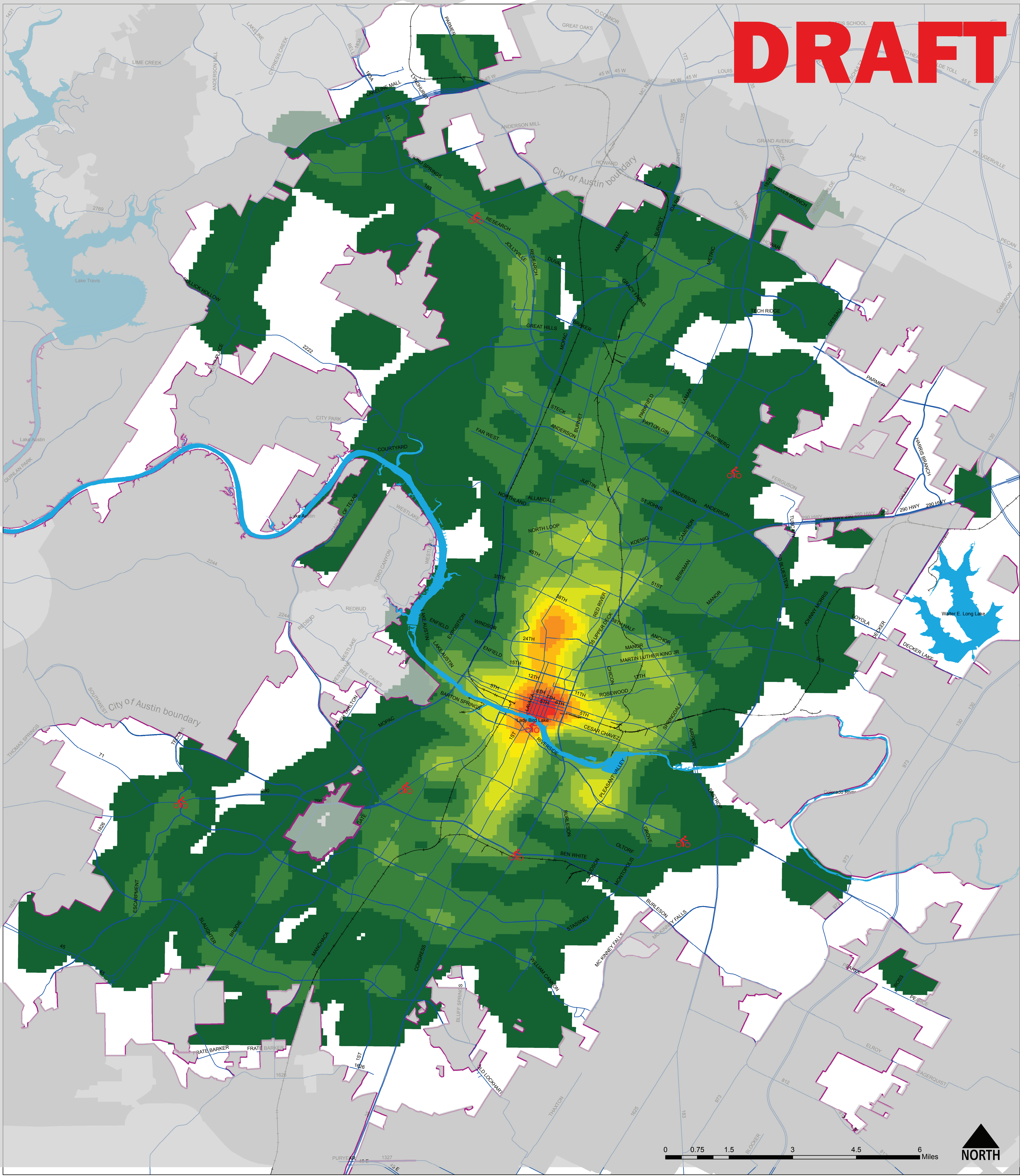
No injuries  
or deaths



Low

High





Injury & Fatal Crashes **Bicycling** (2010-2014)

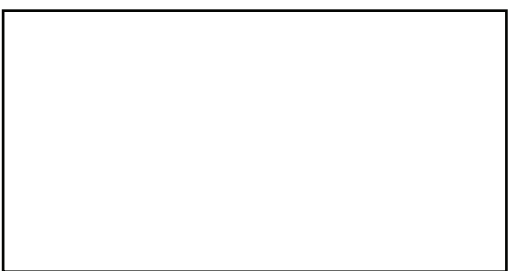
Source: TXDOT 2010 - 2014 Standard File Extract, City of Austin jurisdiction



Deaths by mode

 biking (7)

Concentration of injuries & deaths



No injuries  
or deaths



Low

High