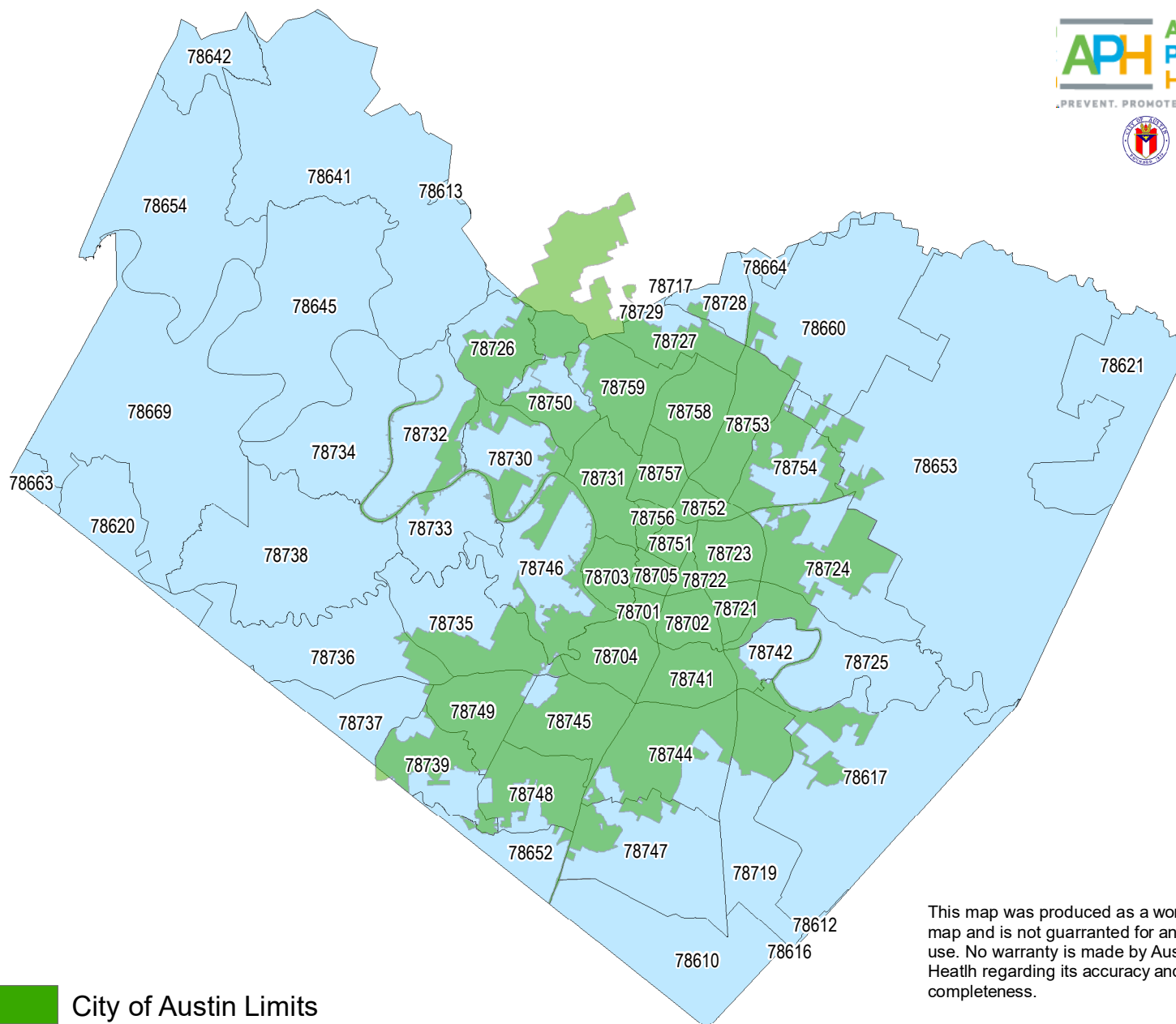


Austin Public Health Environmental Health Services Division Arbovirus Surveillance 2019



This map was produced as a working staff map and is not guaranteed for any other use. No warranty is made by Austin Public Health regarding its accuracy and completeness.

Map updated as of November 25, 2019.

For the status of West Nile Virus cases in humans across the state, including Travis County, [click here](#).

As of November 25, 2019, there are not any positive mosquito pools in any Austin or Travis County zip code.