

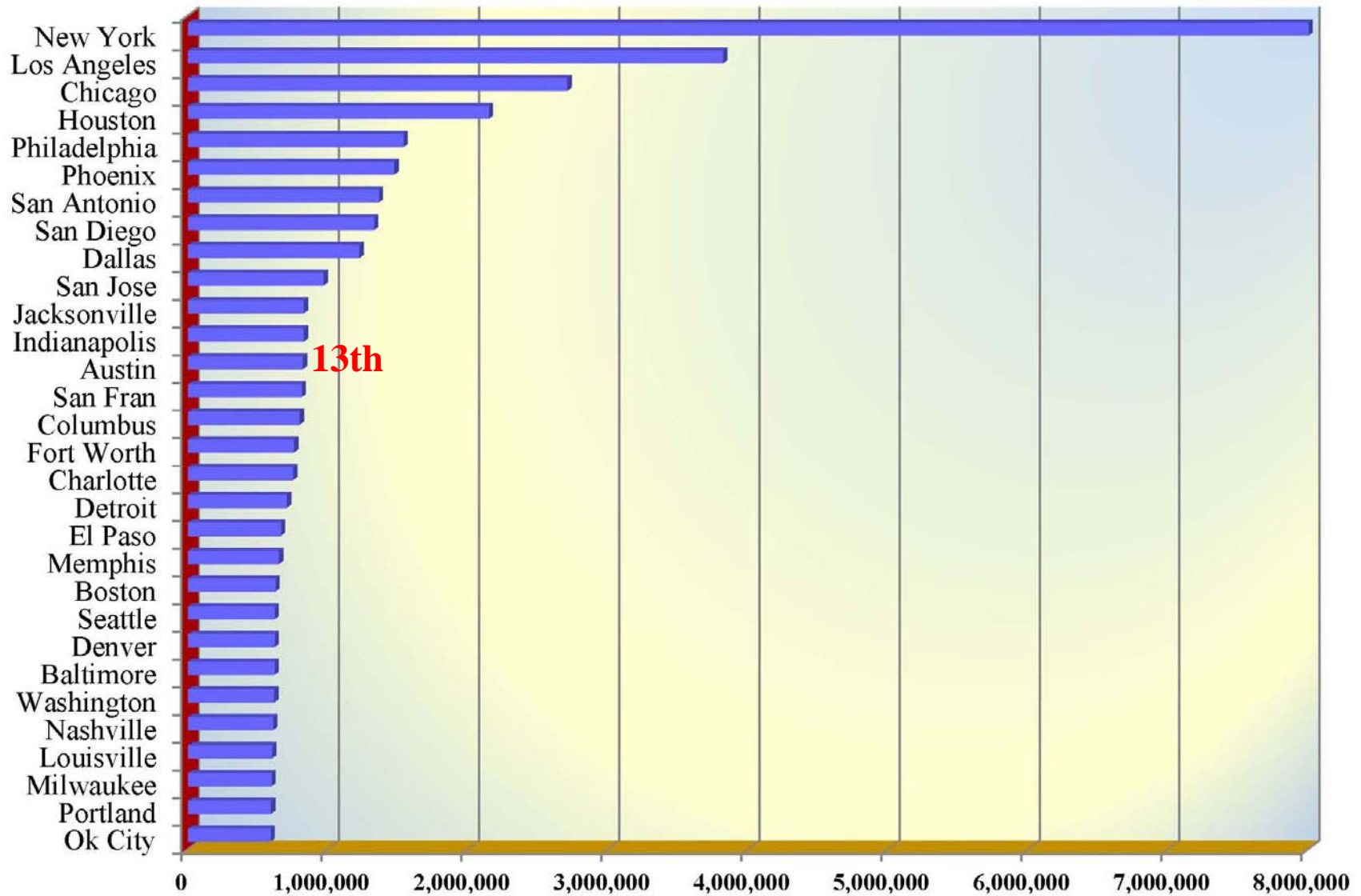
Growth and Diversification



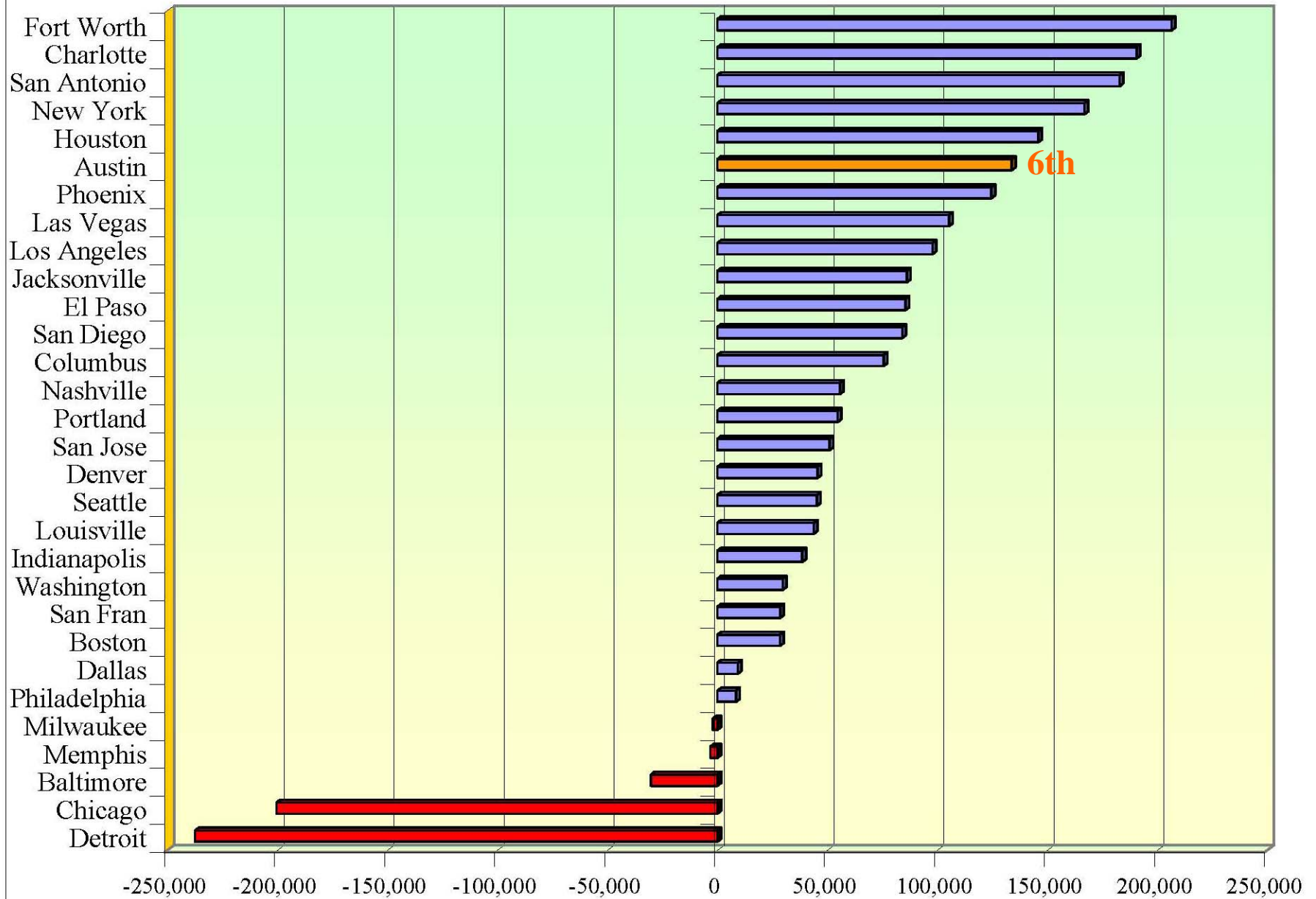
Growth and Diversification

1. Long-term, sustained, rapid population growth.

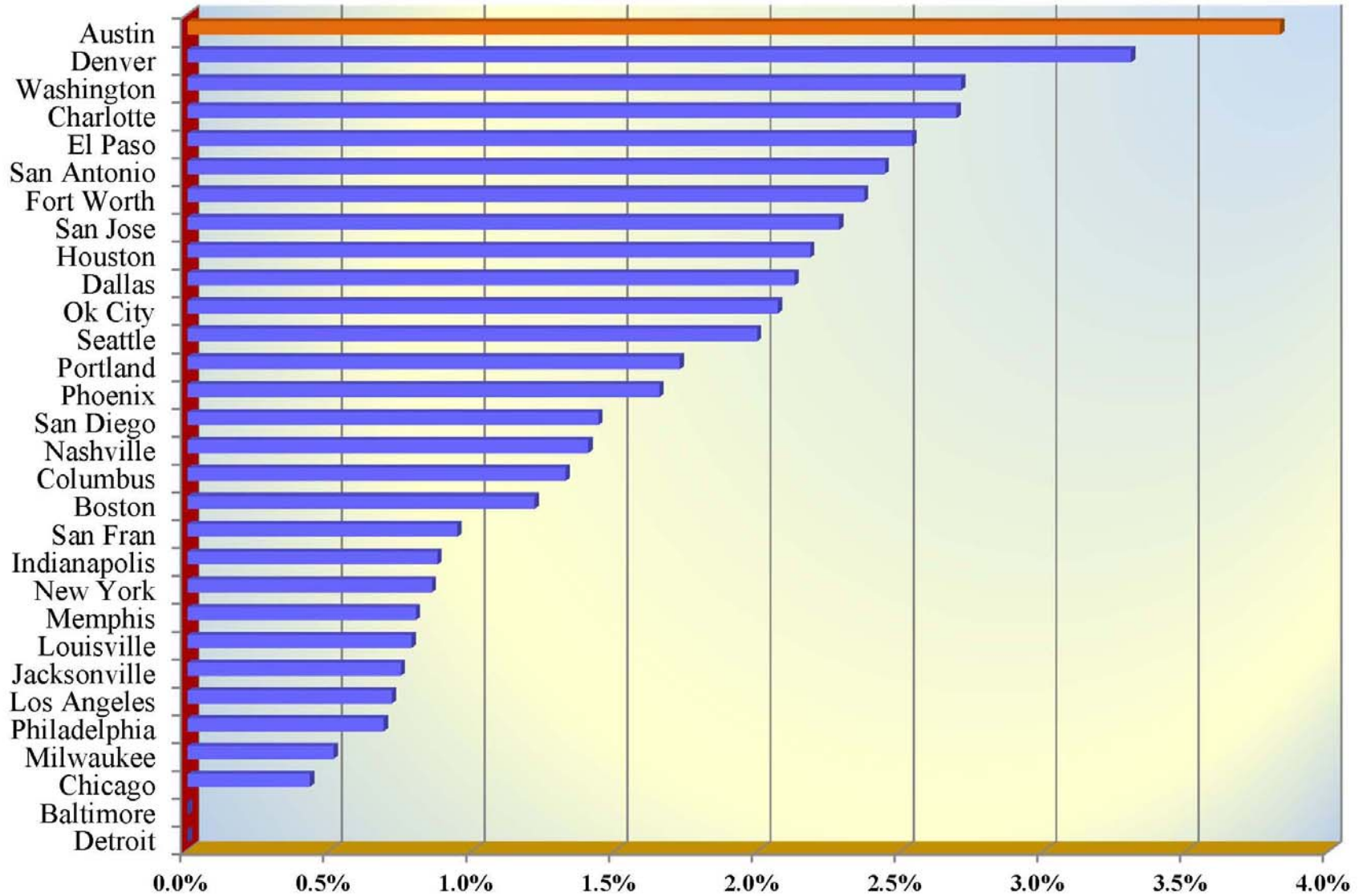
Top 30 Largest Cities in the US: 2011



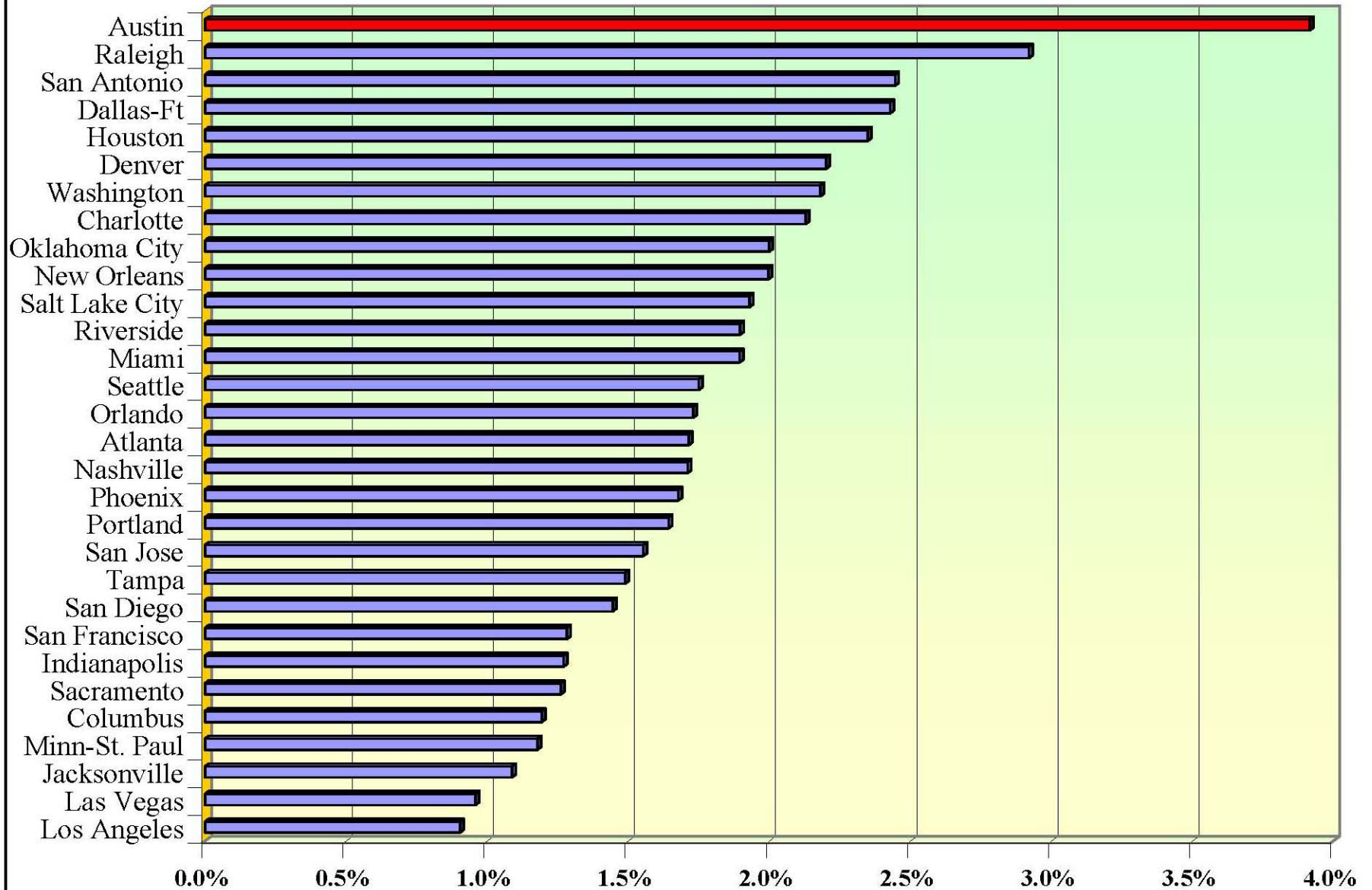
Growth and Decline, Top 30 US Cities, 2000 to 2010



Growth and Decline, Top 30 US Cities, 2010 to 2011



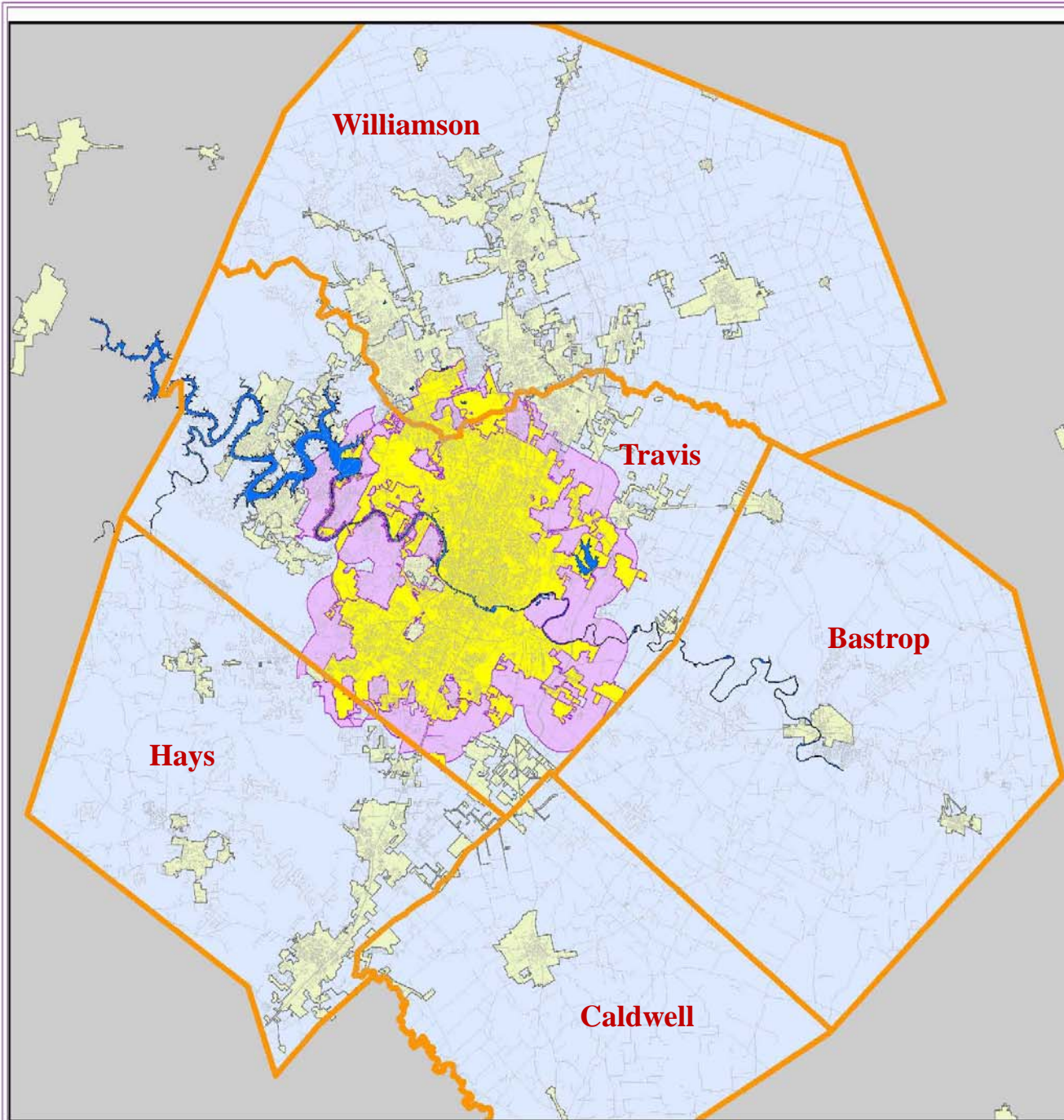
Top 30 Metropolitan Areas Ranked by Percentage Growth: 2010 to 2011





Austin-- Round Rock MSA

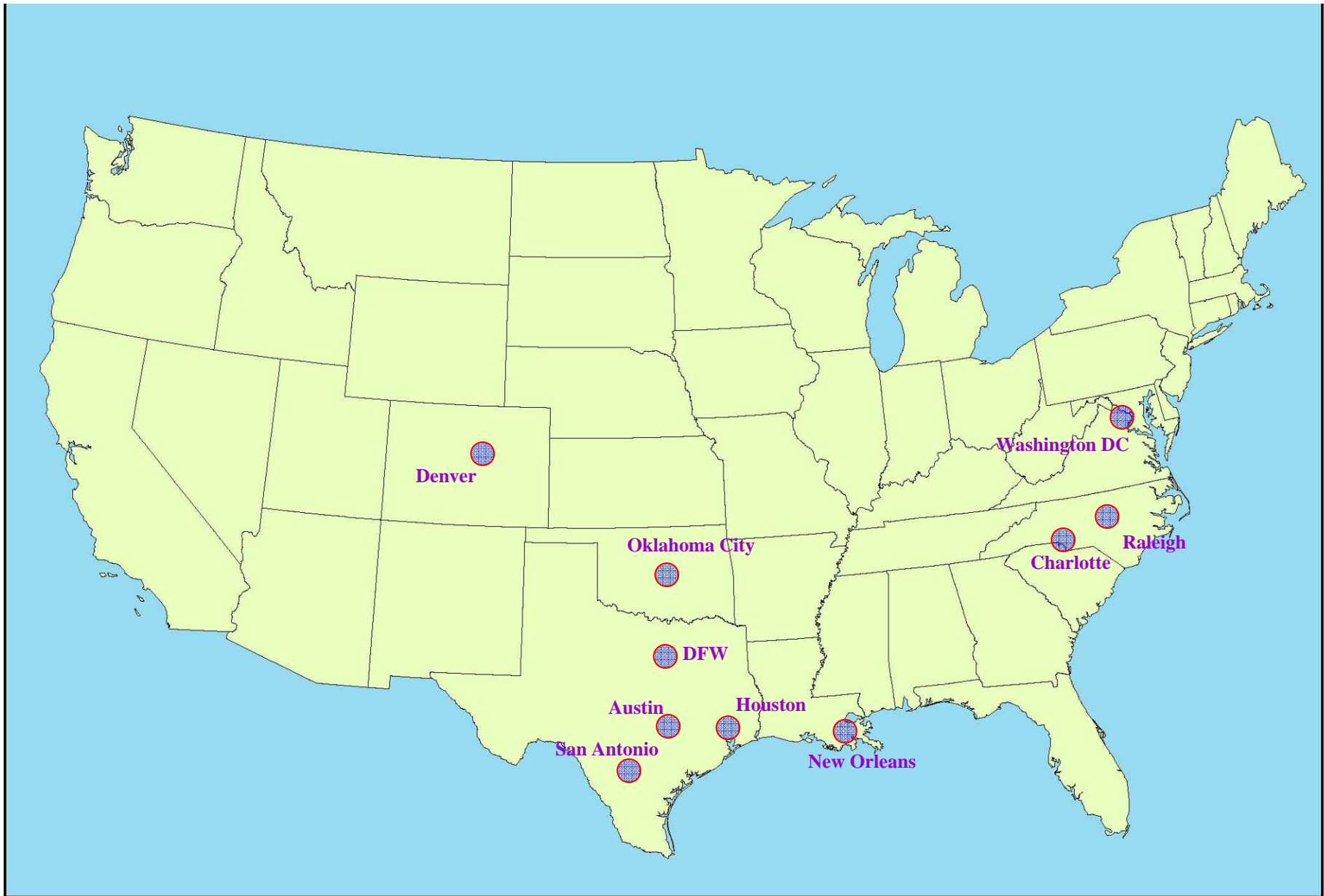
Metropolitan Statistical Area

January 2013

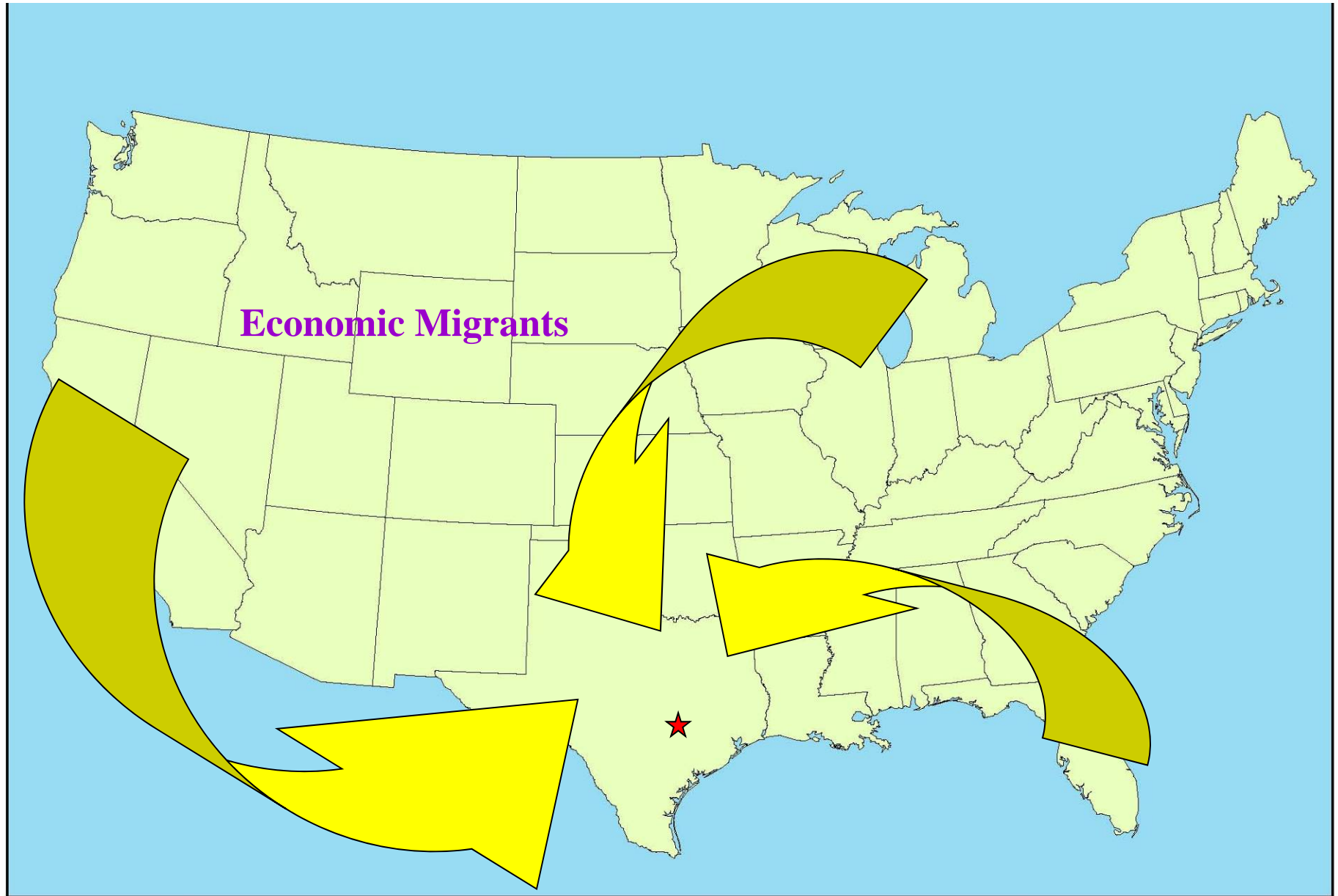


-  City of Austin
Full and Limited
Jurisdiction
-  City of Austin
Extra-Territorial
Jurisdiction

10 Fastest Growing Metro Areas, 2010 to 2011

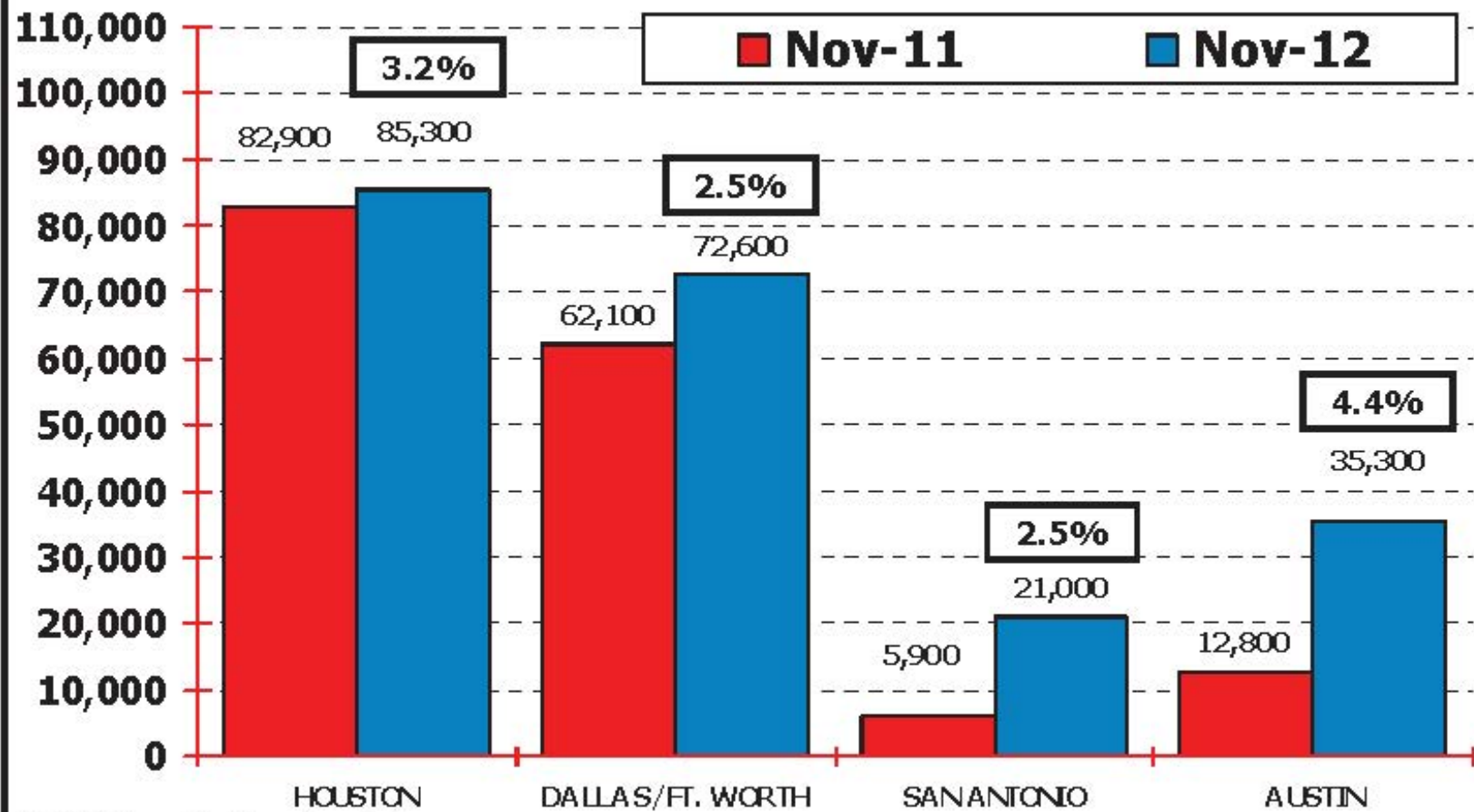


Current and Projected Household Flows into Austin



JOB GROWTH-MAJOR TEXAS MARKETS

Annual Rate: Nov. 2011 vs. Nov. 2012



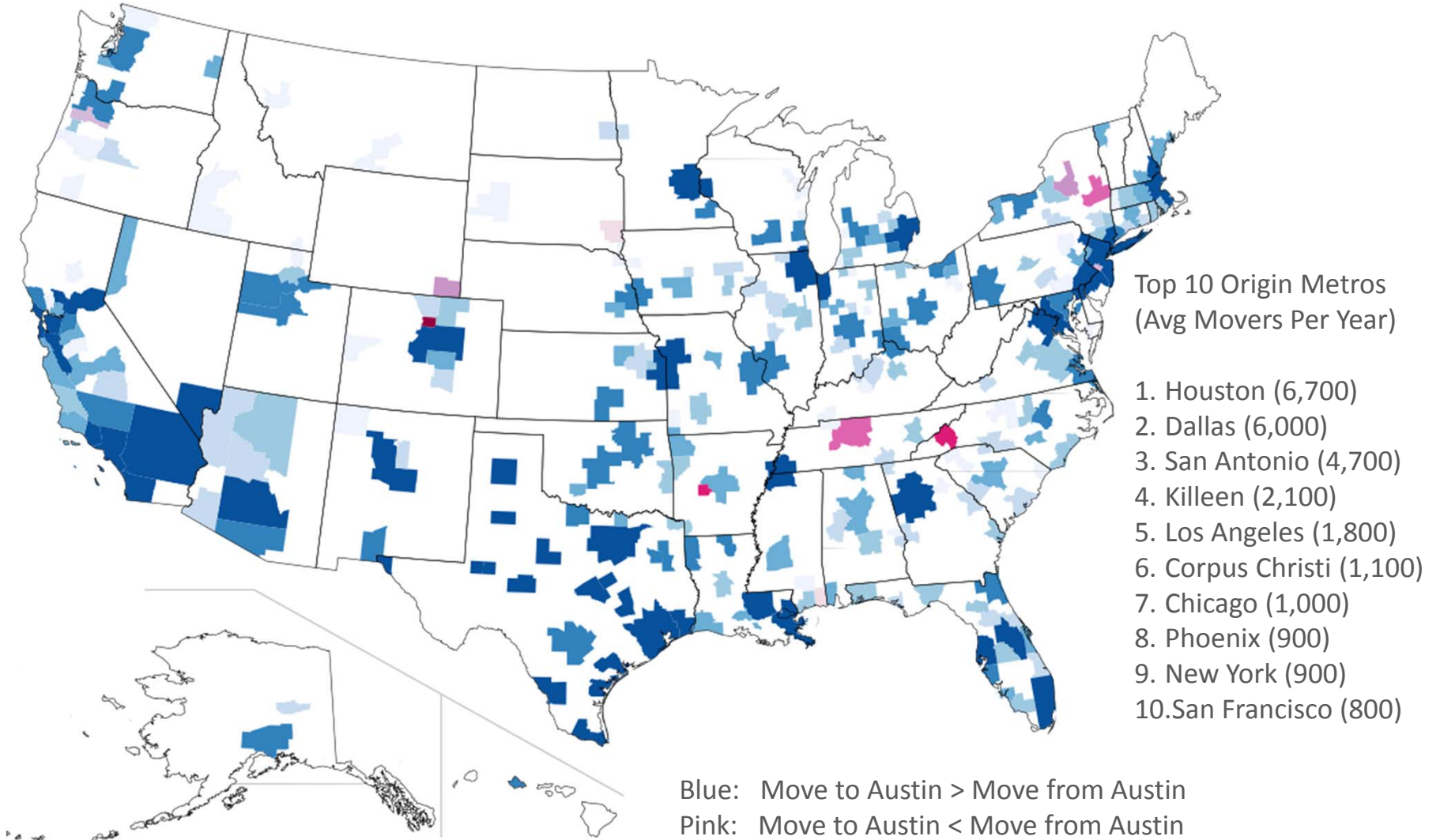
SOURCE: Texas Workforce Commission



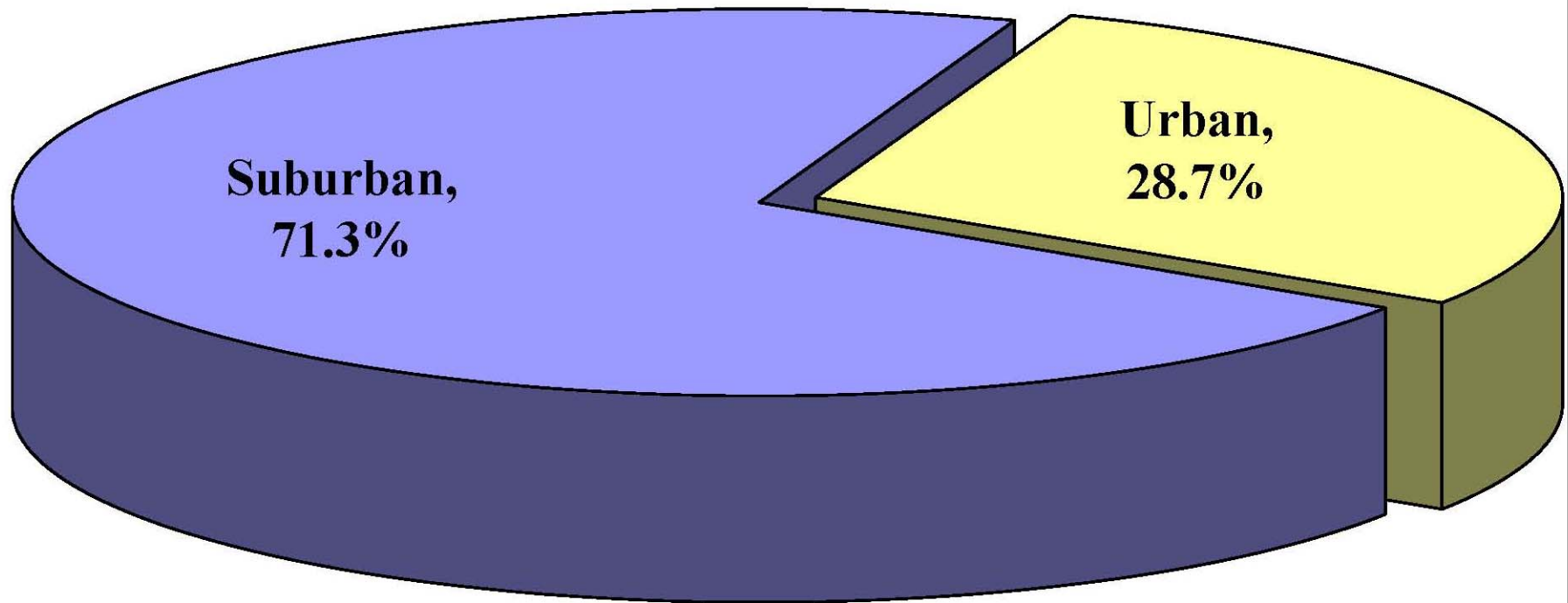
Copyright Metrostudy 2013

Austin: Movers Driving Growth

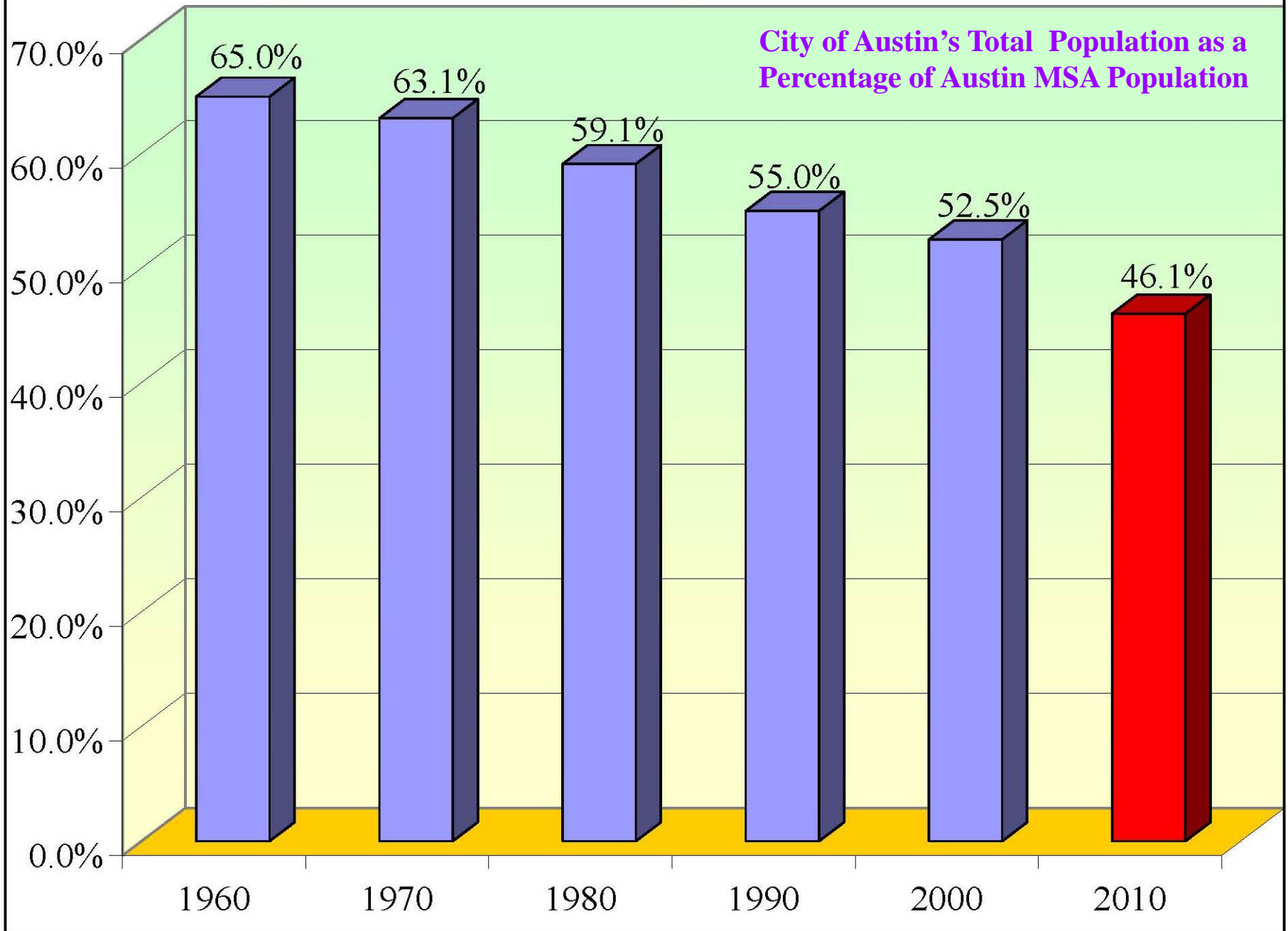
Source: Internal Revenue Service, 2000-2010 (MSAs only)



**Source of Metropolitan Austin
Population Growth (466K+) from 2000 to
2010: Urban vs. Suburban**



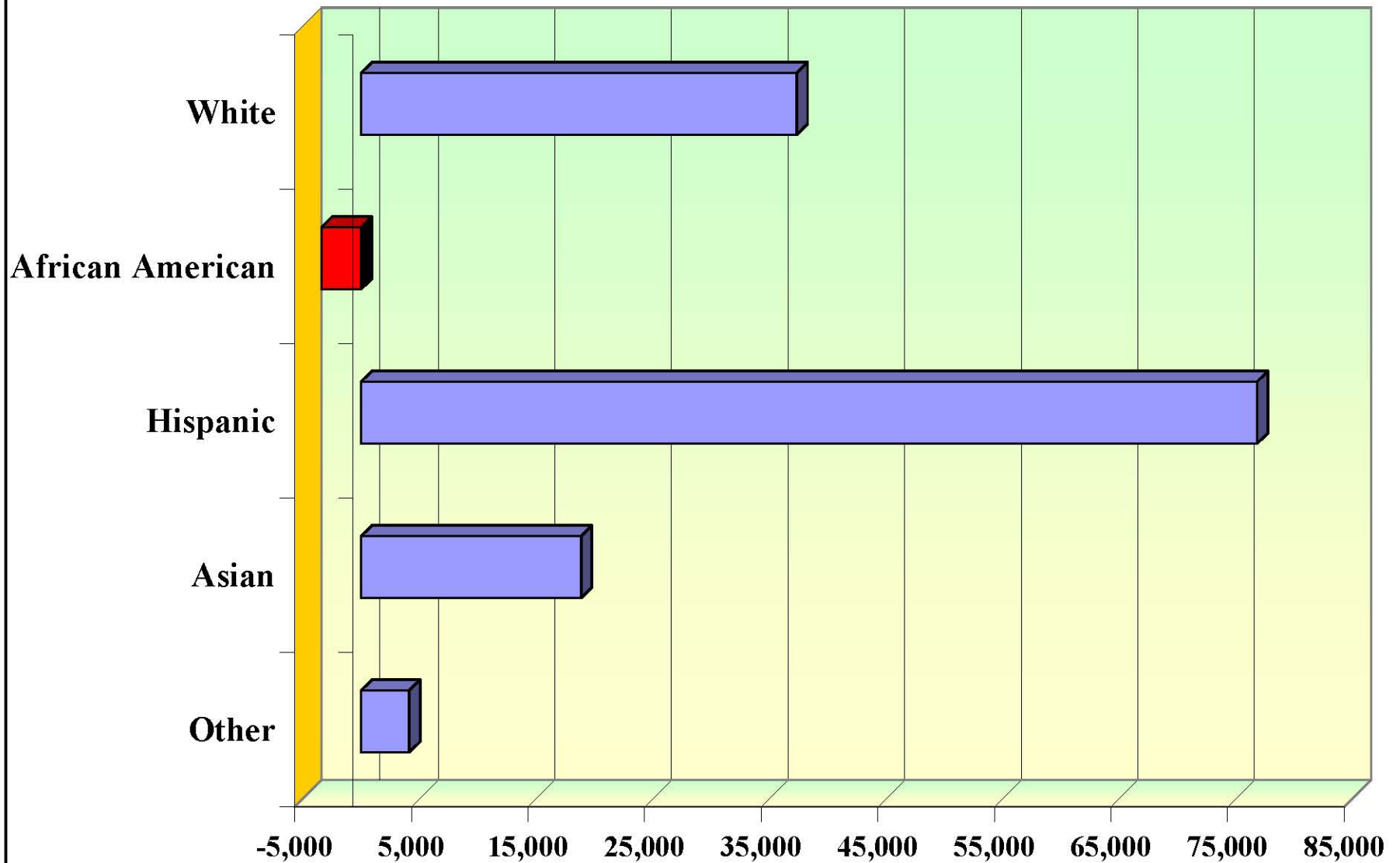
City of Austin Percentage of MSA: 1960 to 2010



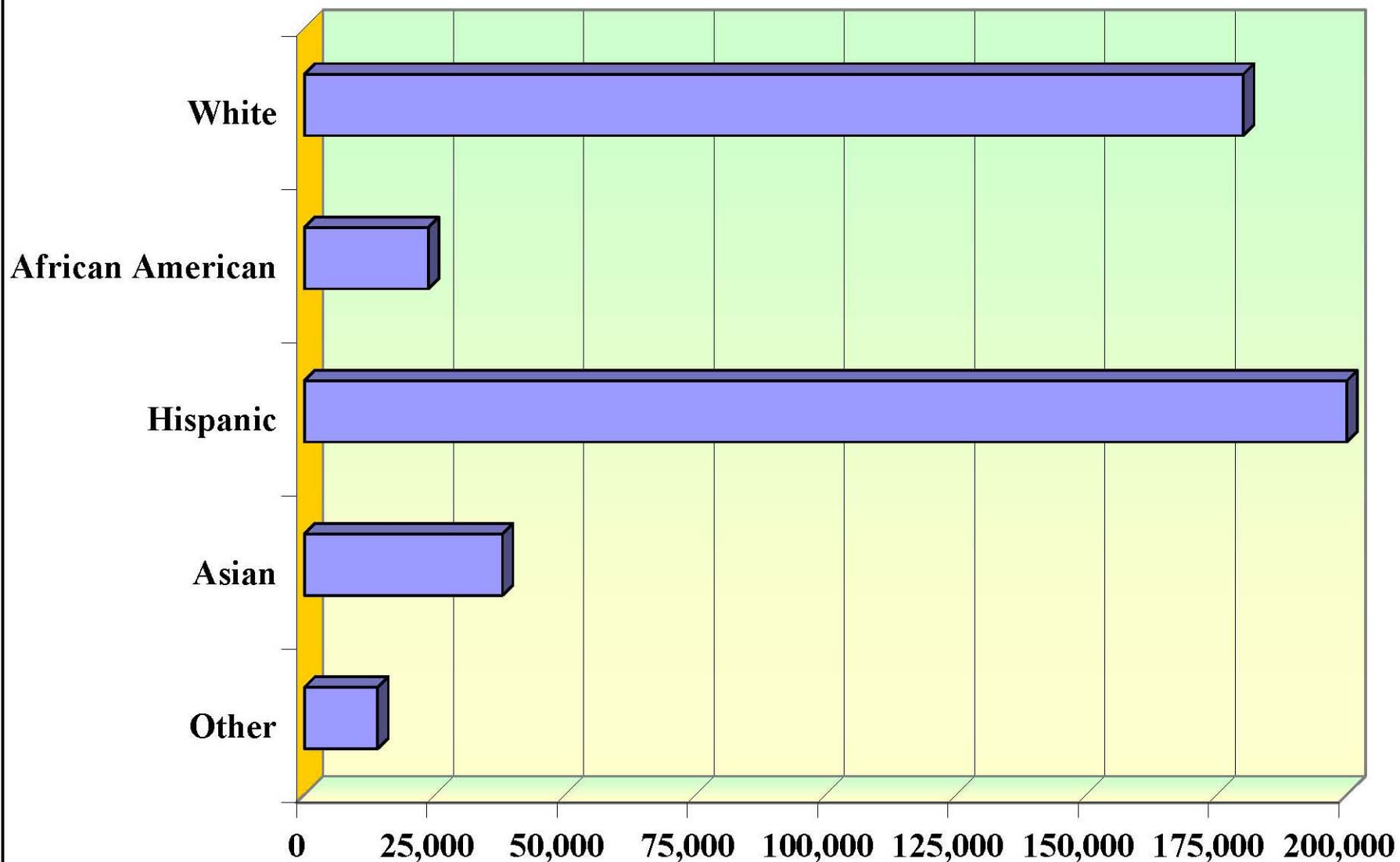
Growth and Diversification

1. Long-term, sustained, rapid population growth.
- 2. Profound Racial and Ethnic Diversification.**

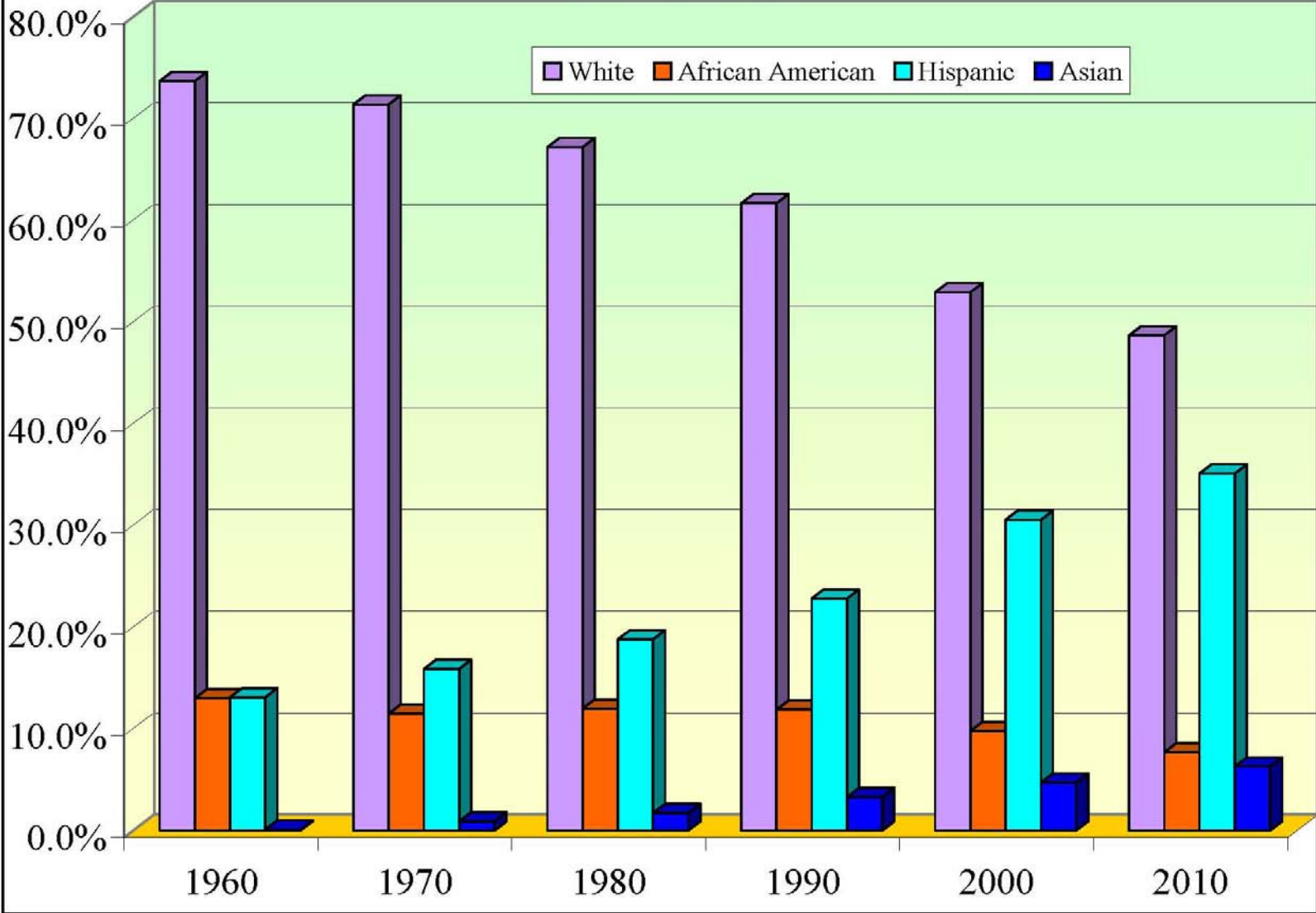
City of Austin, Total Population Growth by Racial and Ethnic Group, 2000 to 2010



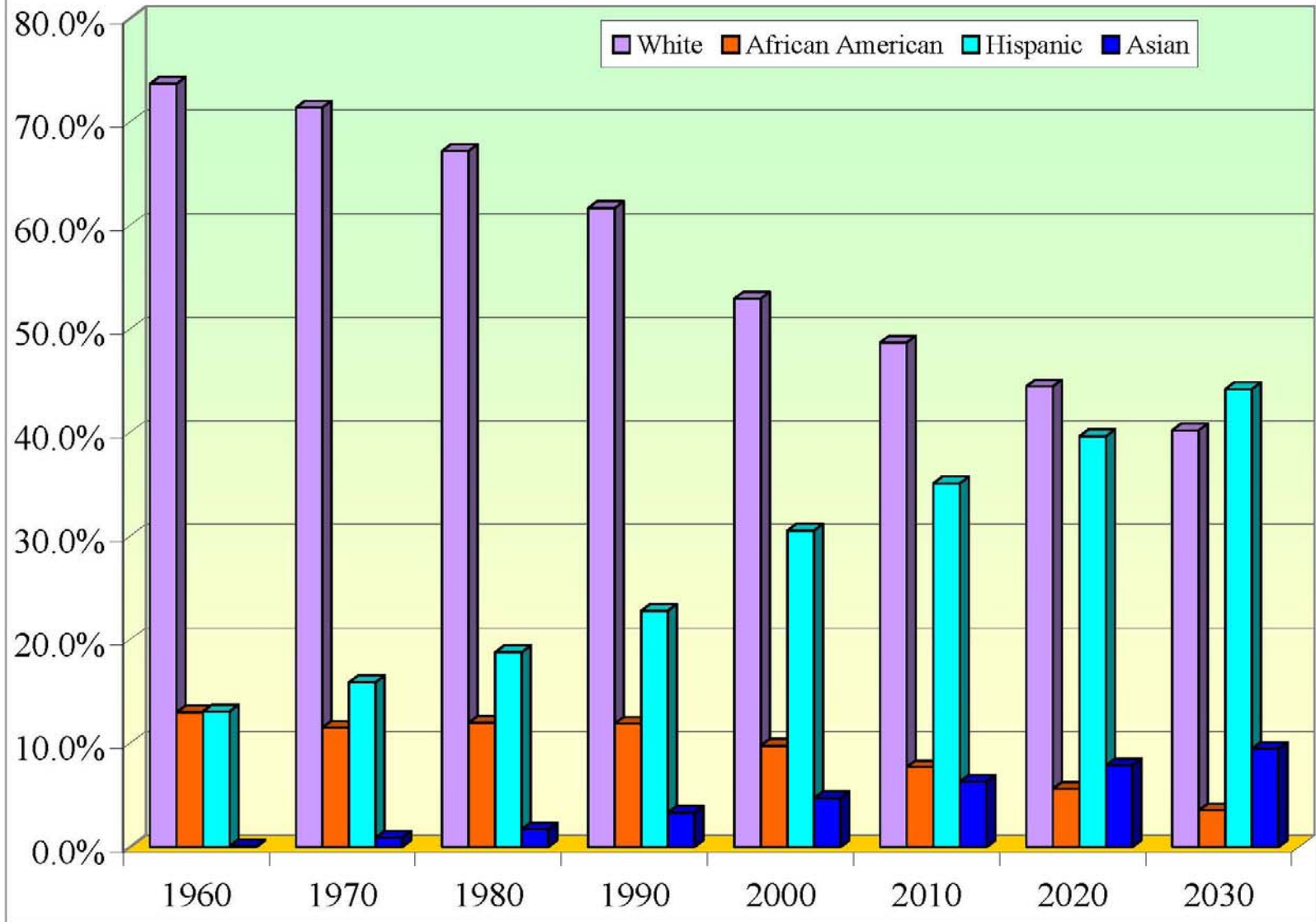
Austin MSA, Total Population Growth by Racial and Ethnic Group, 2000 to 2010



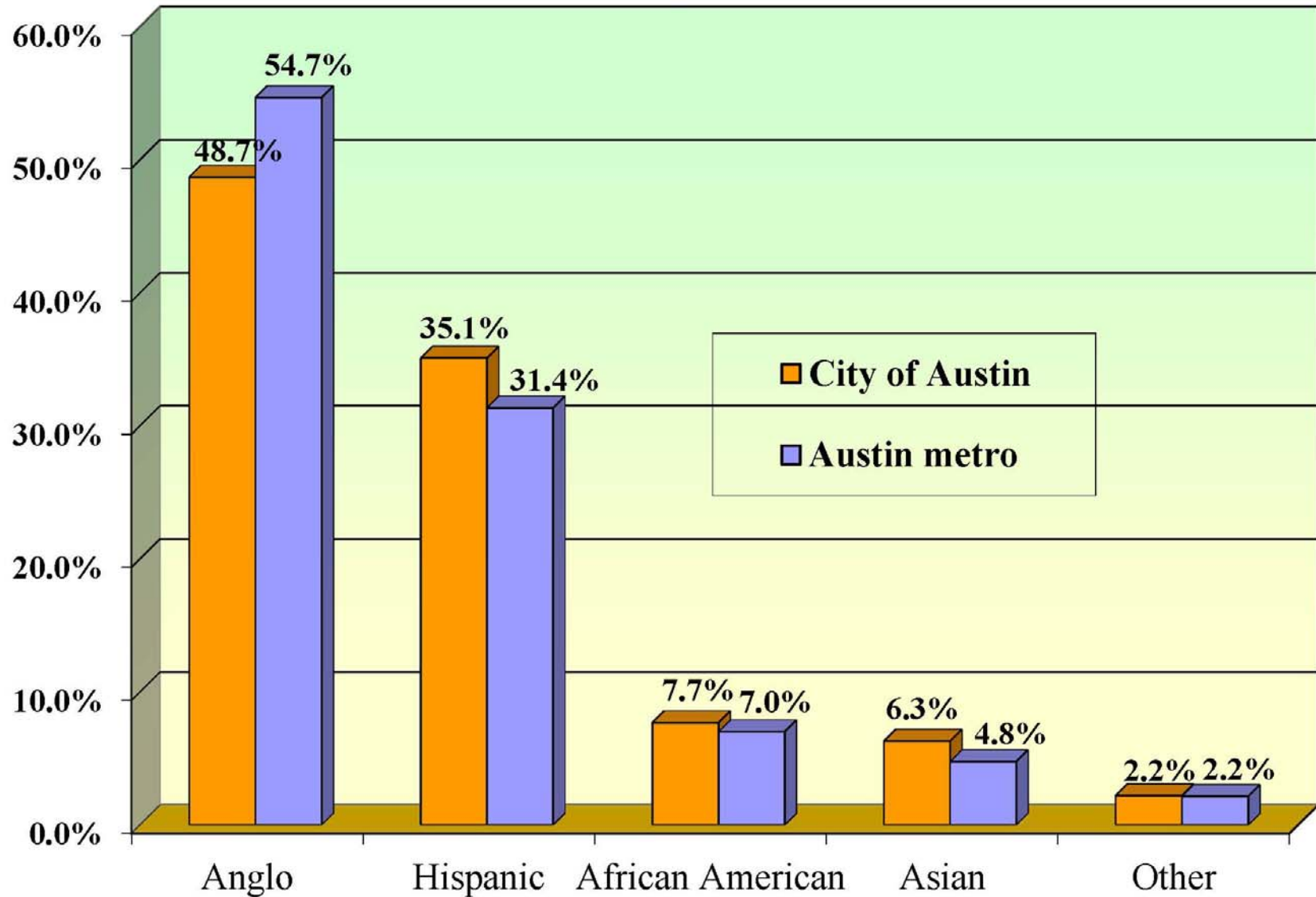
City of Austin Racial and Ethnicity Shares History: 1960 to 2010



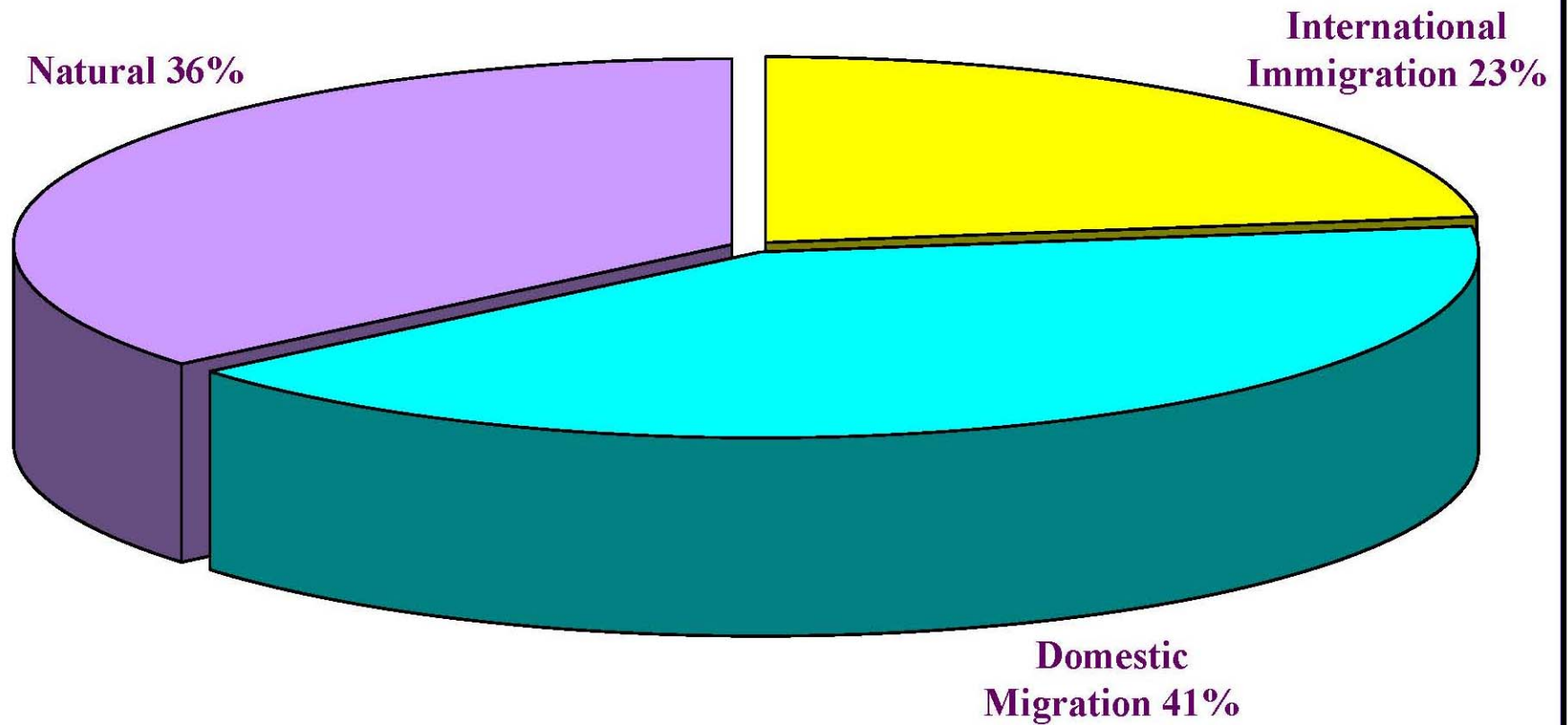
City of Austin Racial and Ethnicity Shares History and Forecast: 1960 to 2030



Metropolitan Austin and the City of Austin Racial and Ethnicity Shares: 2010



Components of Population Growth: 2000 to 2010, Austin MSA

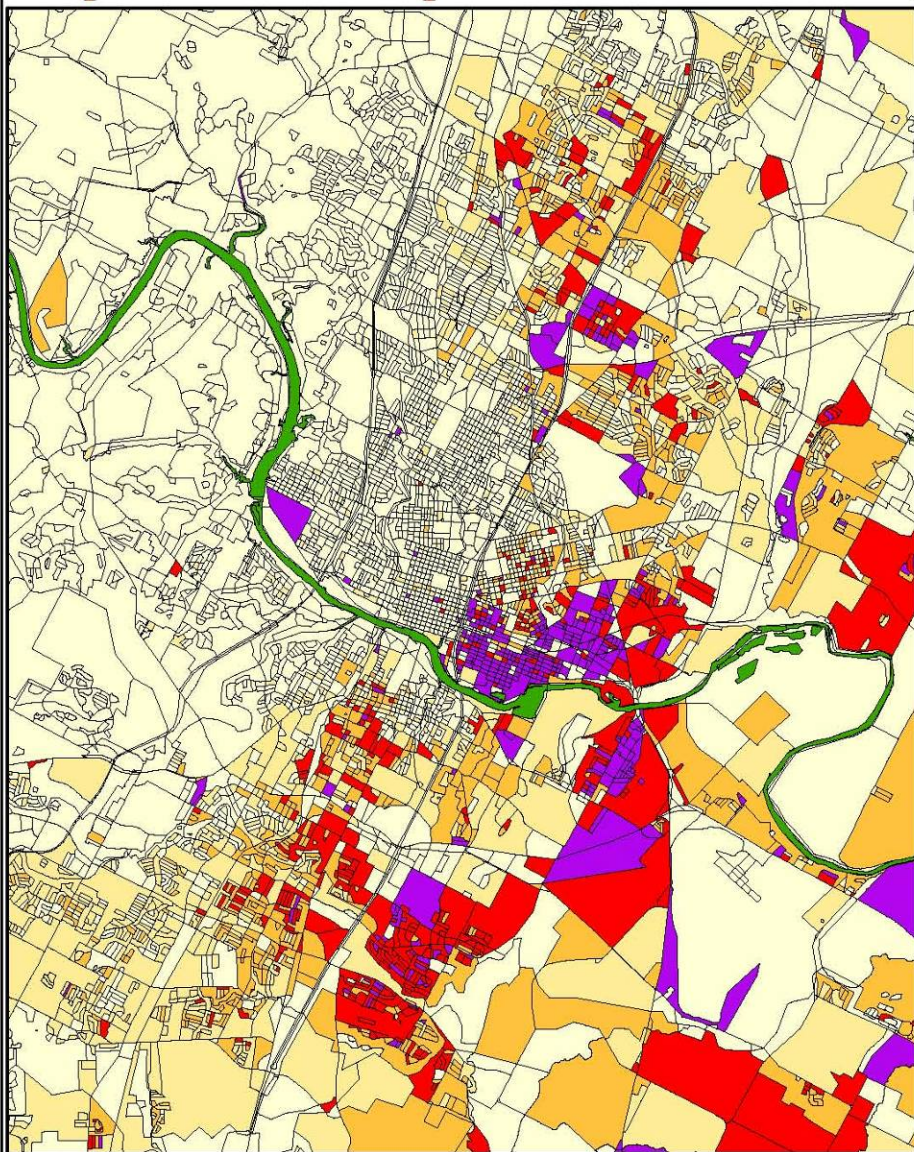


Growth and Diversification

1. Long-term, sustained, rapid population growth.
2. Profound Racial and Ethnic Diversification.
- 3. Spatial divisions more distinct.**

Changing Hispanic Landscape

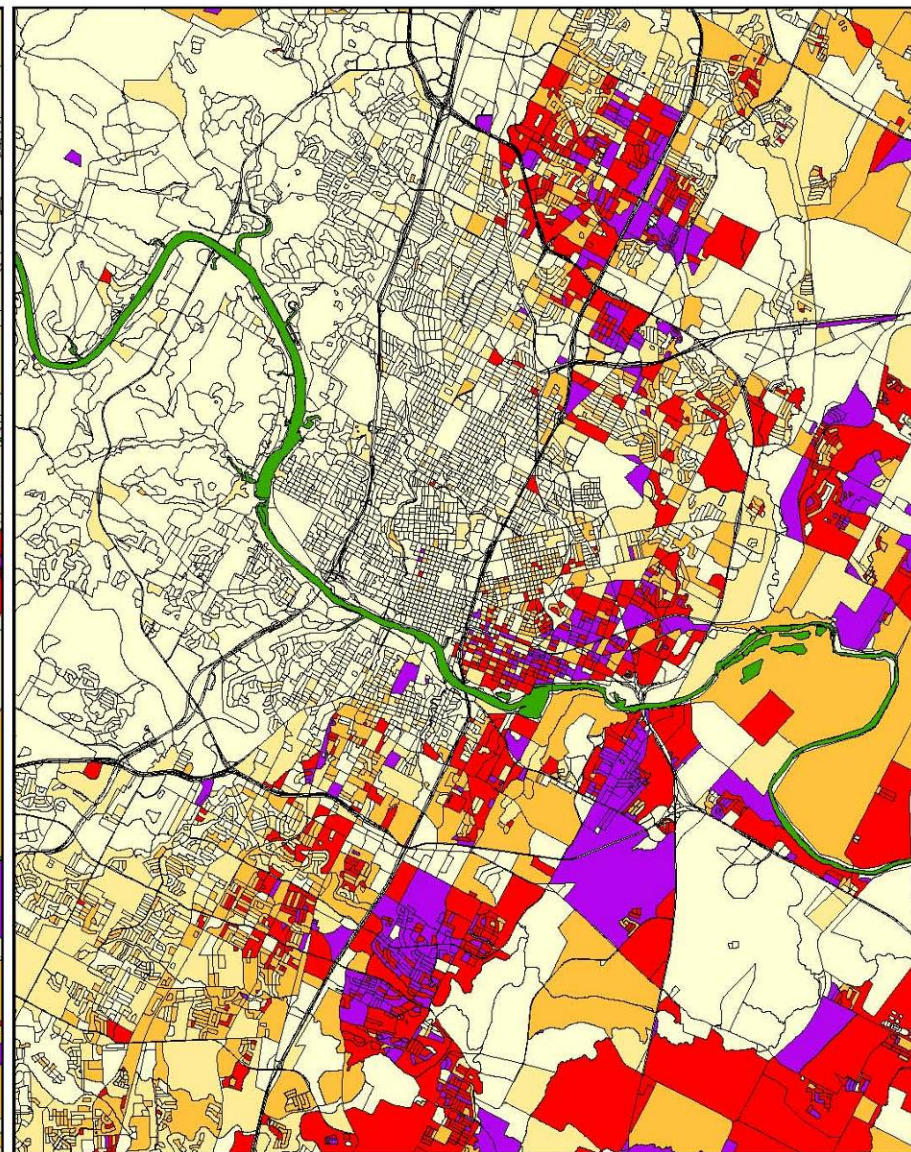
Hispanic--Latino Population Concentrations, 2000 and 2010



Census 2000 Data
Census Blocks

Percentage of the
Total Population
that is of
Hispanic Origin

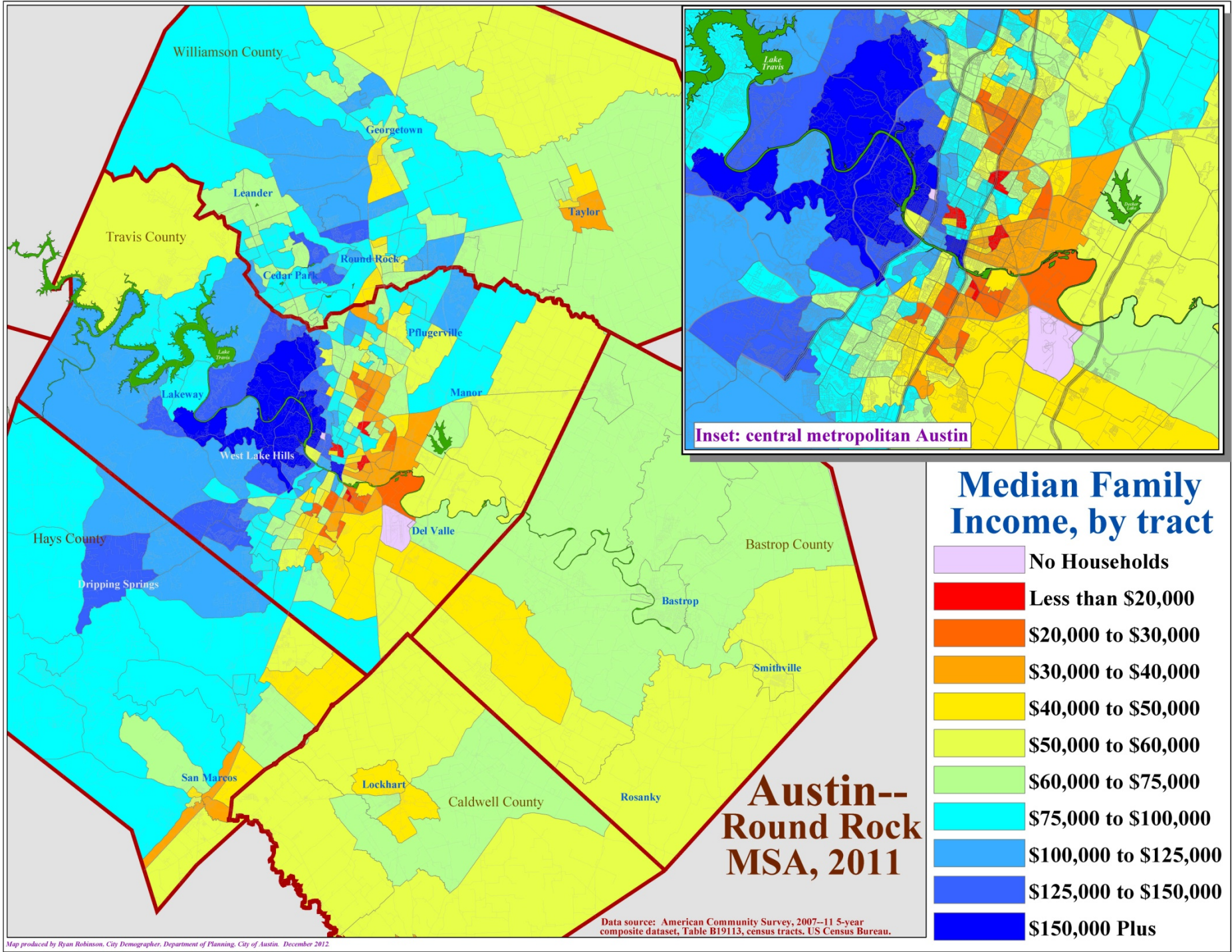
- Less than 20%
- 20% to 40%
- 40% to 60%
- 60% to 80%
- 80% Plus



Census 2010 Data
Census Blocks

Percentage of the
Total Population
that is of
Hispanic Origin

- Less than 20%
- 20% to 40%
- 40% to 60%
- 60% to 80%
- 80% Plus



Inset: central metropolitan Austin

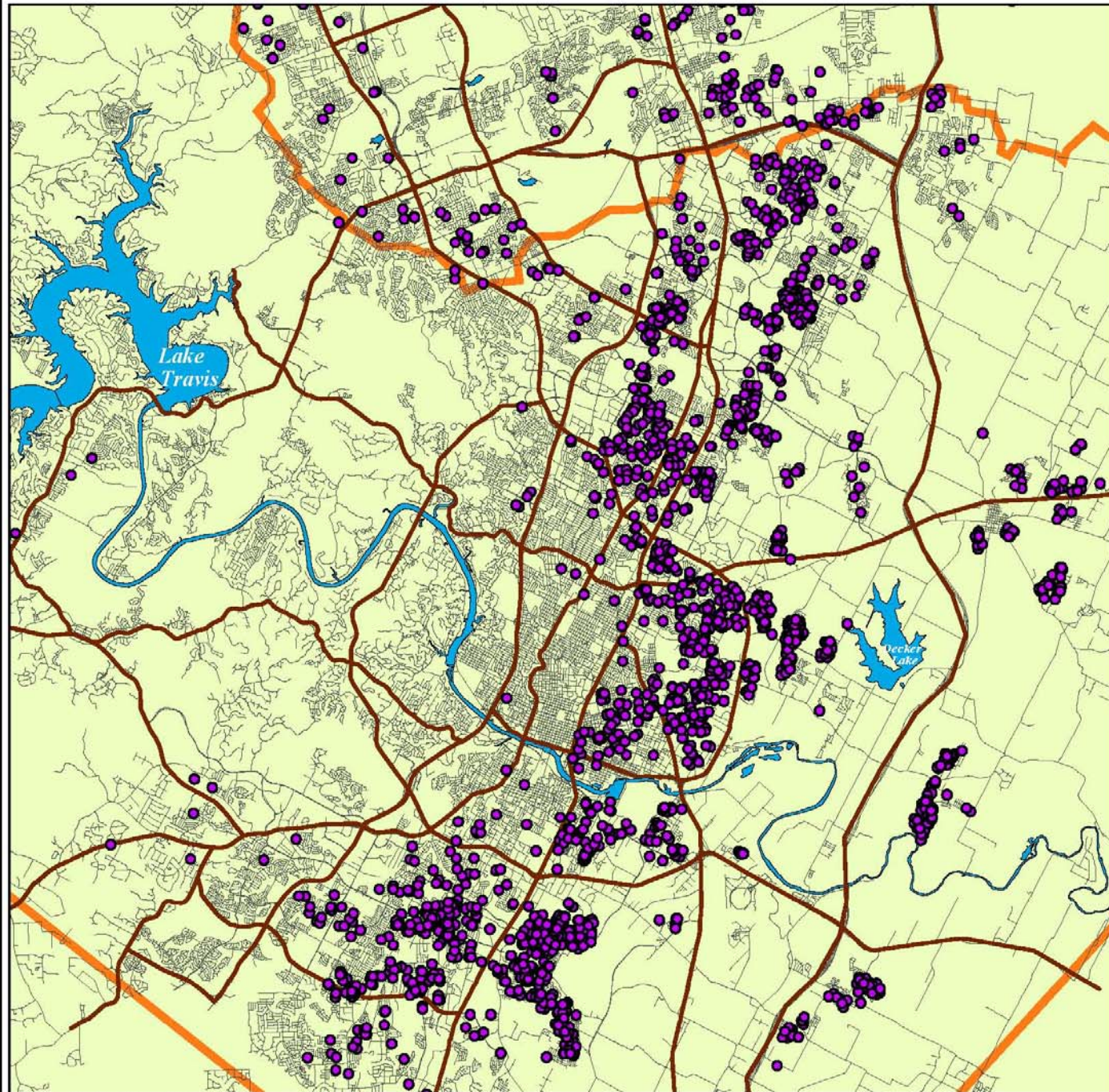
Austin--Round Rock MSA, 2011

Data source: American Community Survey, 2007-11 5-year composite dataset, Table B19113, census tracts. US Census Bureau.

Map produced by Ryan Robinson, City Demographer, Department of Planning, City of Austin, December 2012.

Section 8 Rental Housing Units 2012

n = 3,168

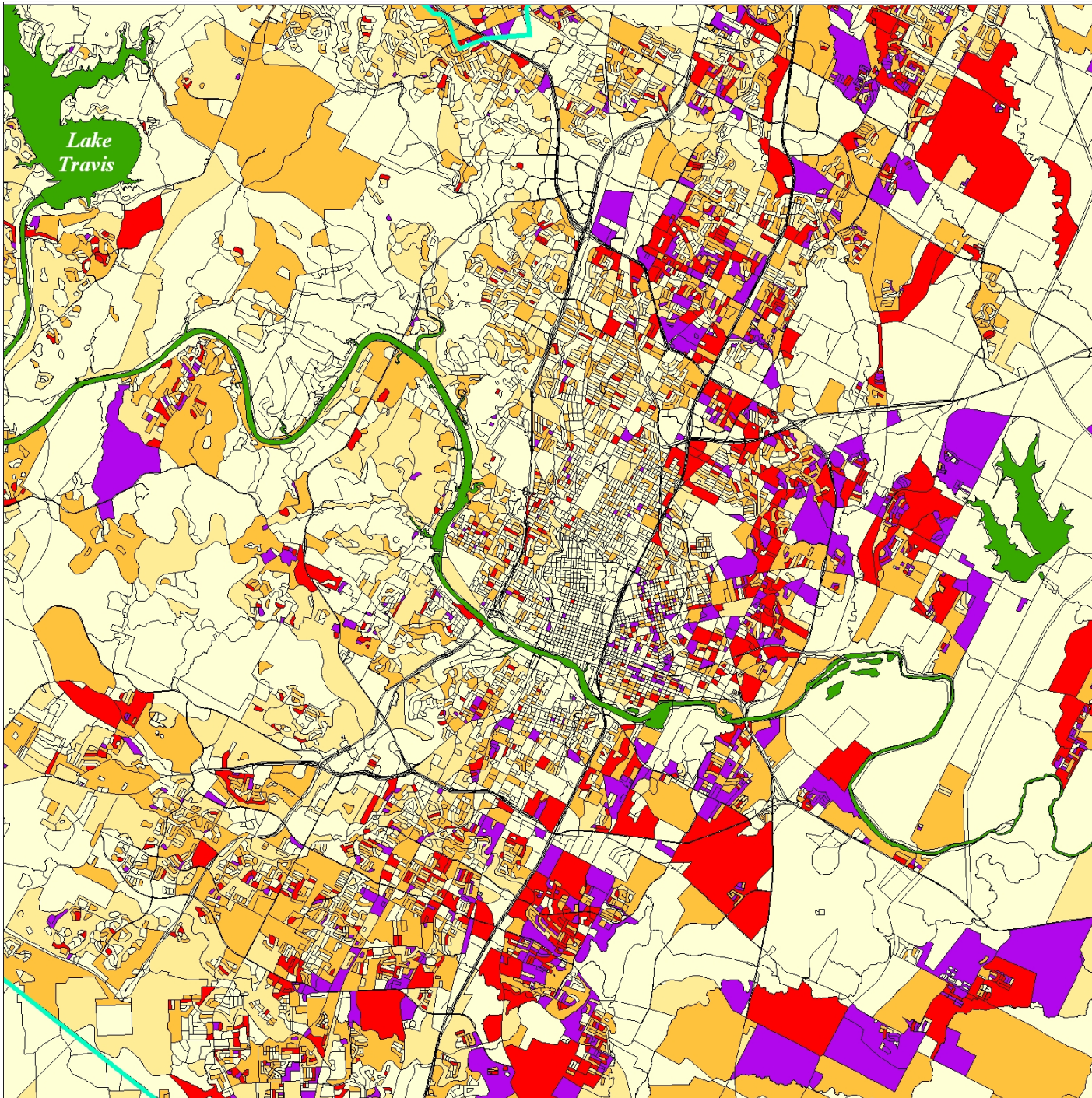
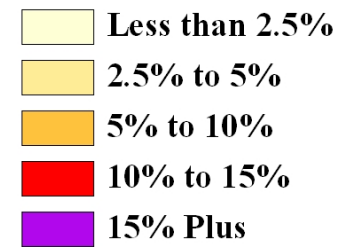


Austin, Texas

Single Mother Headed Households Concentrations

Austin, Texas
Census 2010 Data

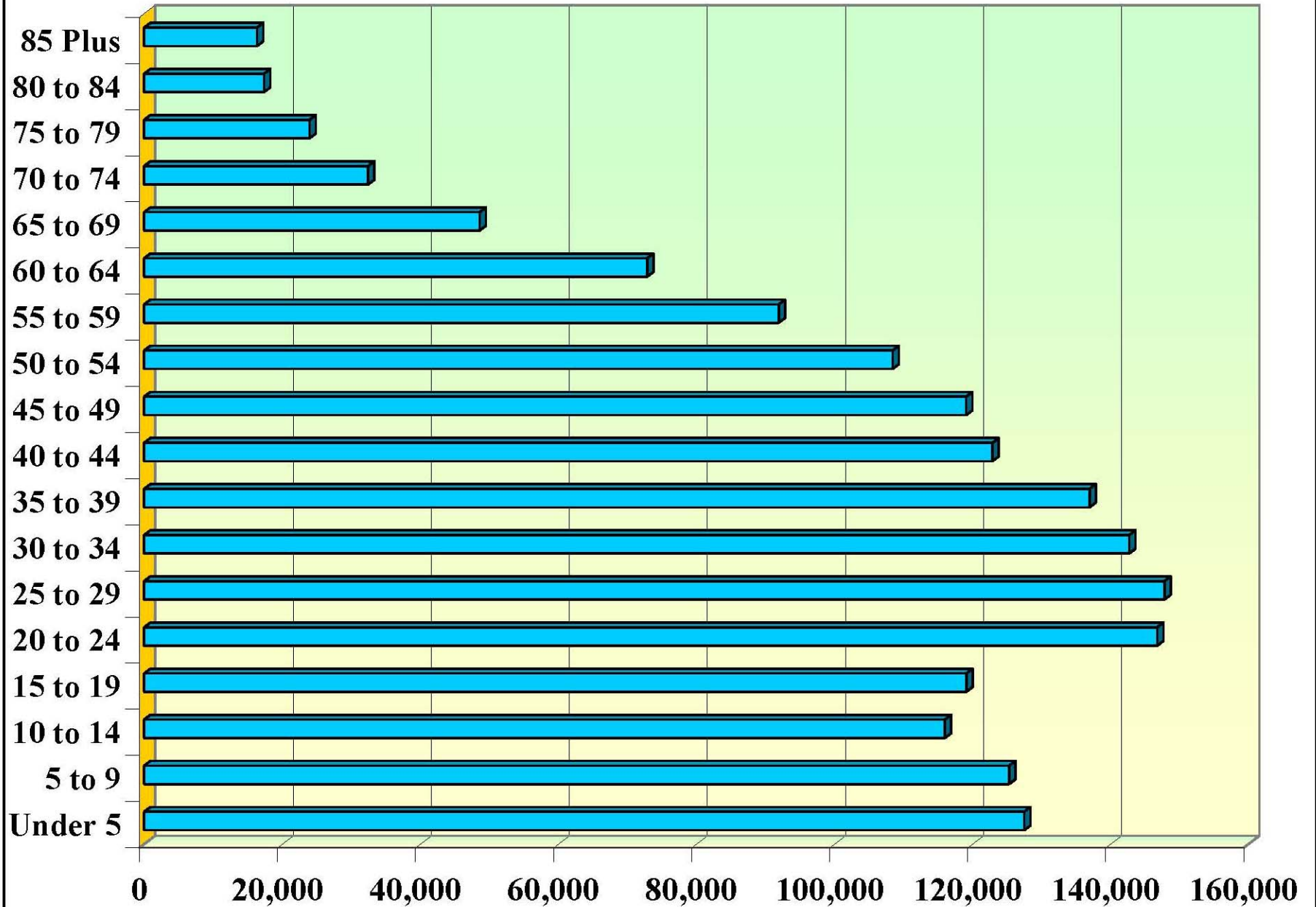
Percentage of all
Households that are
Headed by Single
Mothers



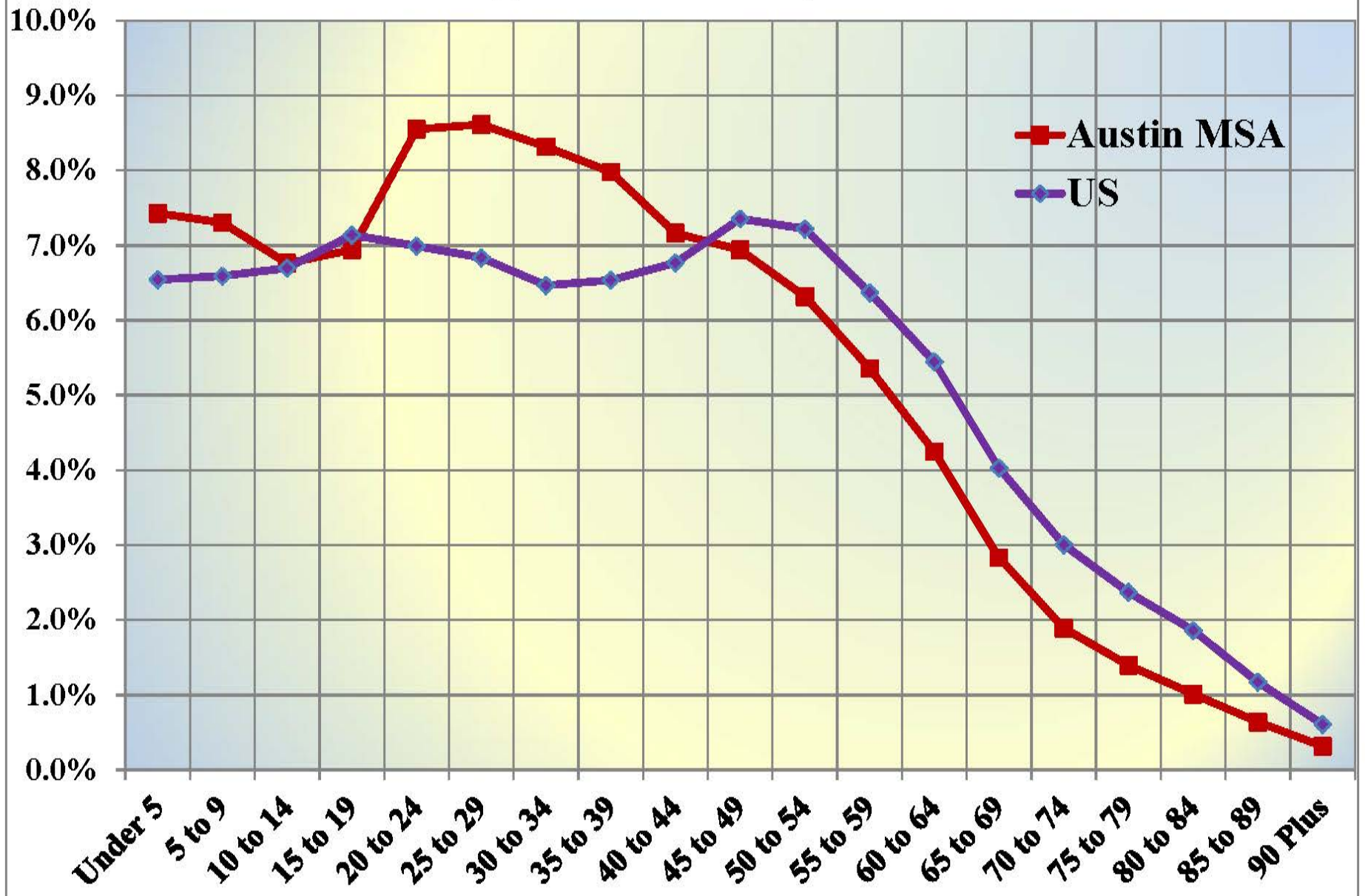
Growth and Diversification

1. Long-term, sustained, rapid population growth.
2. Profound Racial and Ethnic Diversification.
3. Spatial divisions more distinct.
4. **Age structure changing dramatically.**

Austin MSA Age Structure: 2010



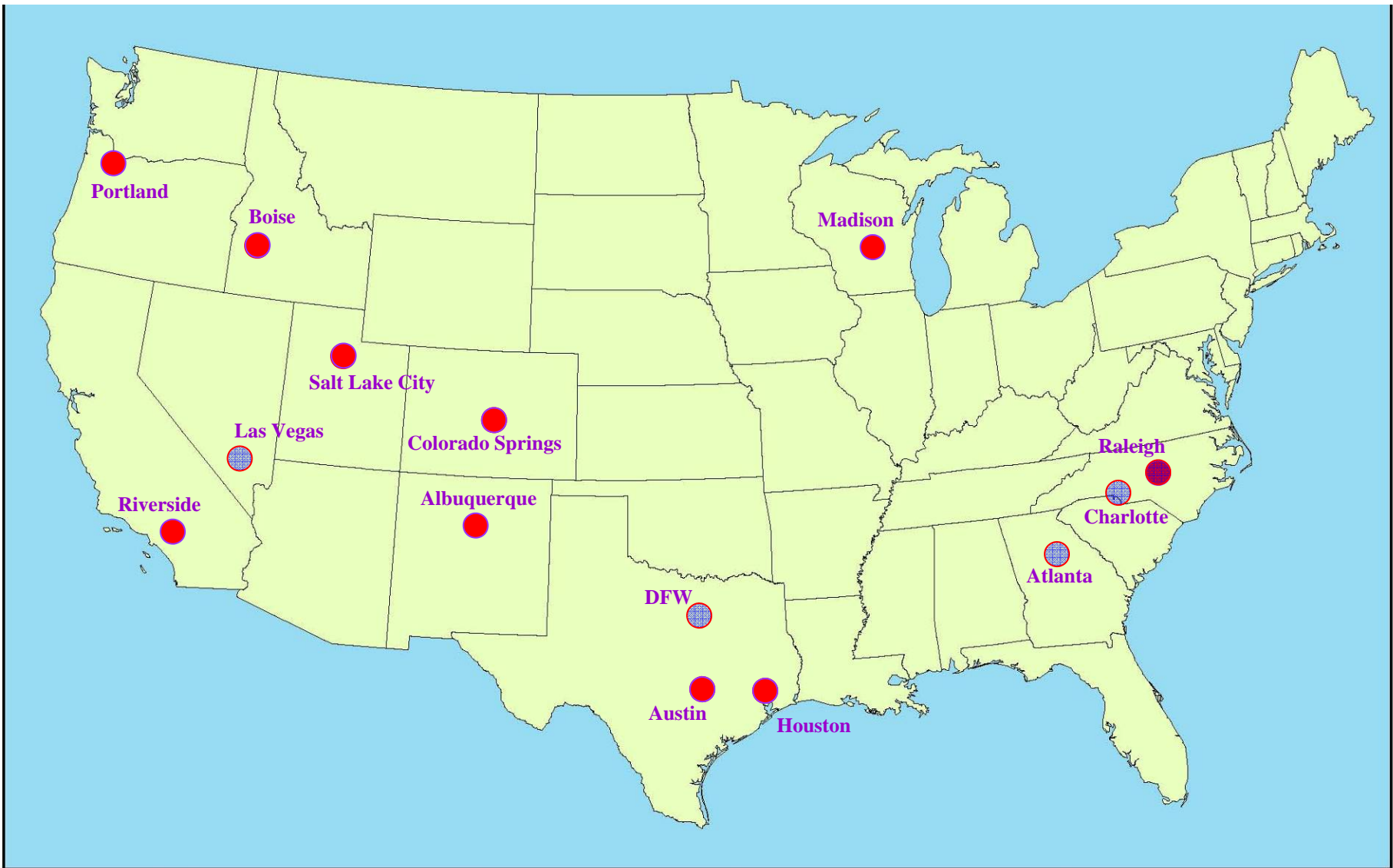
Age Structures, 2010



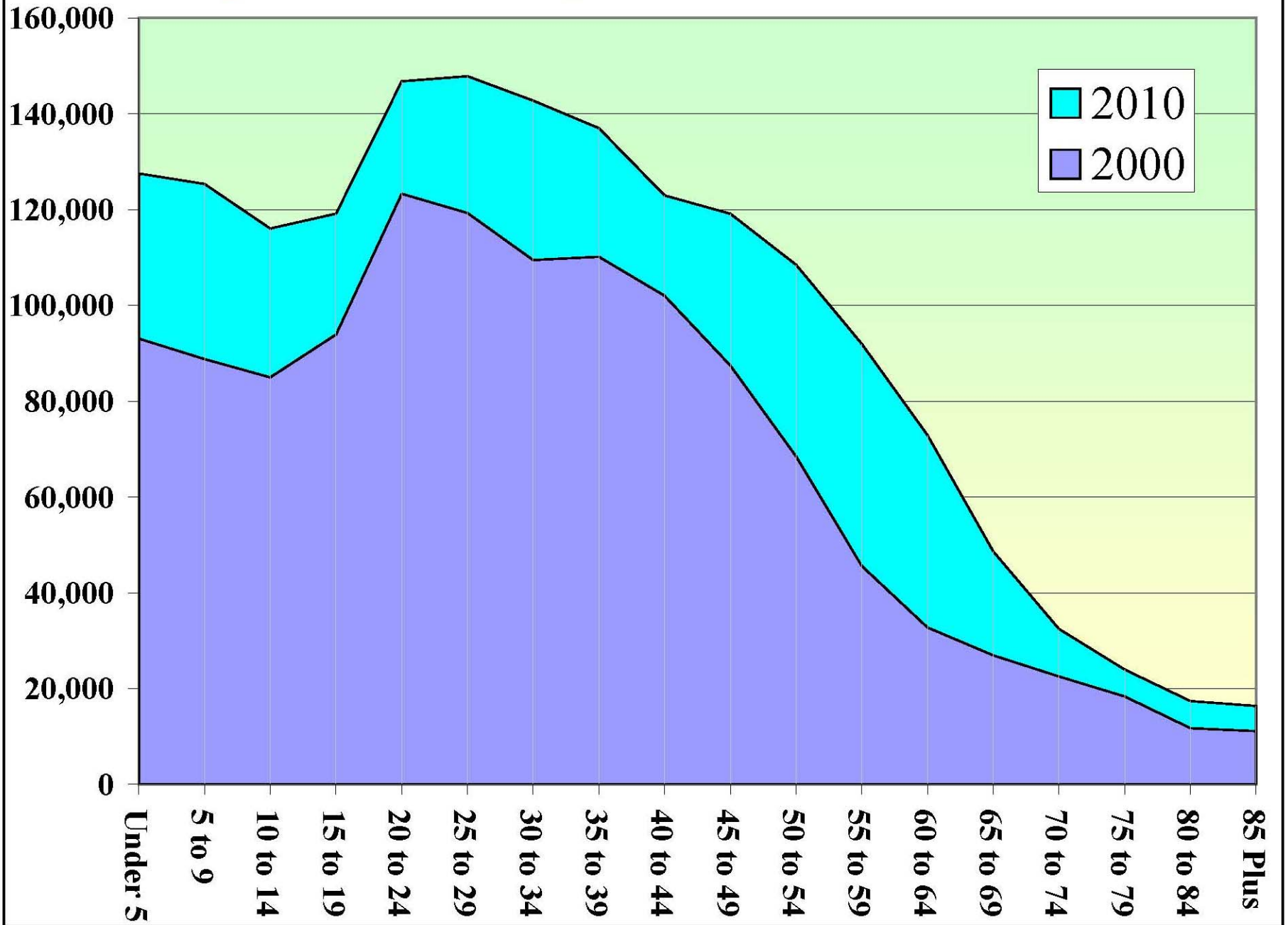
Metro Areas with Fastest Growing Senior and Pre-Senior Population, 2000 to 2010

Seniors (age 65 Plus)

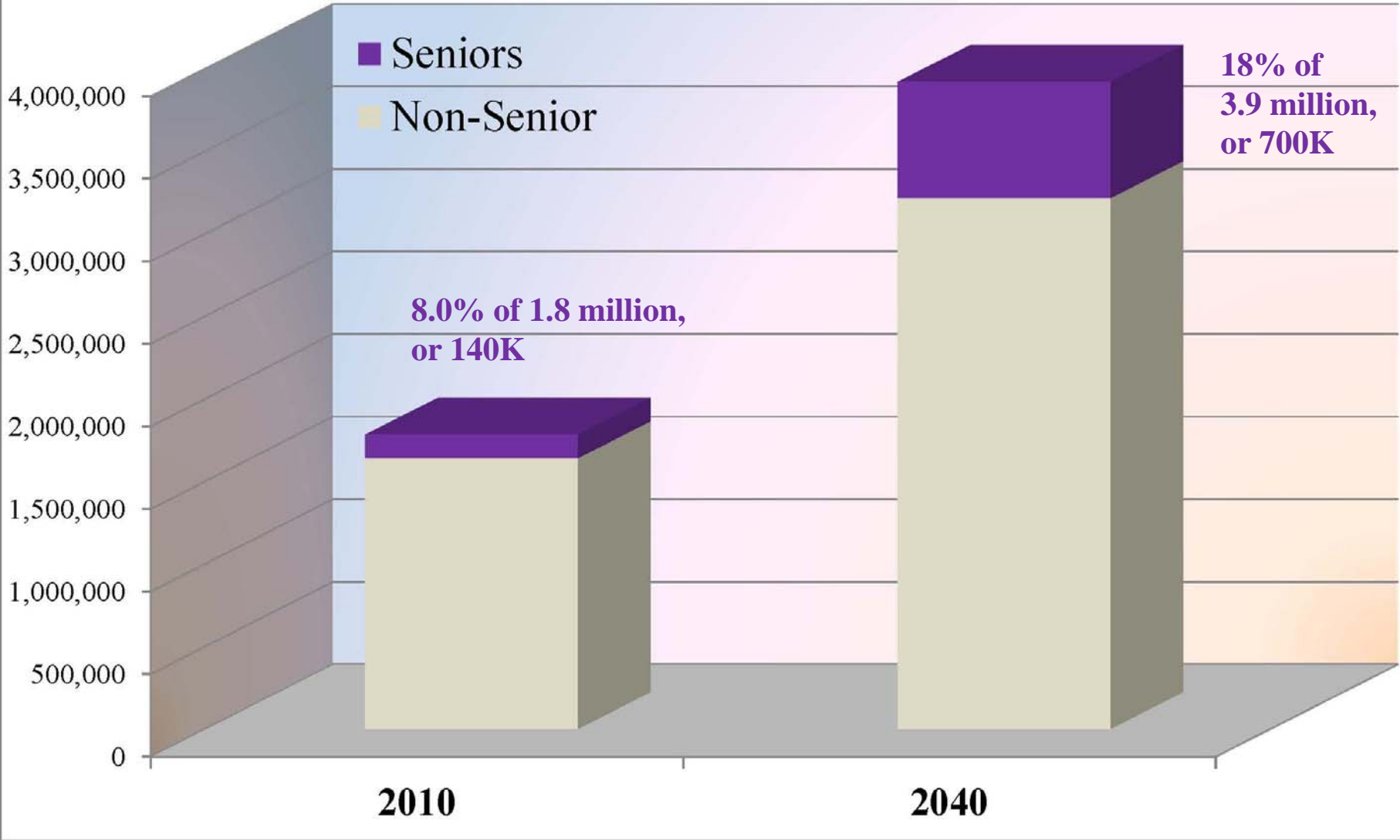
Pre-Seniors (age 55 to 64)



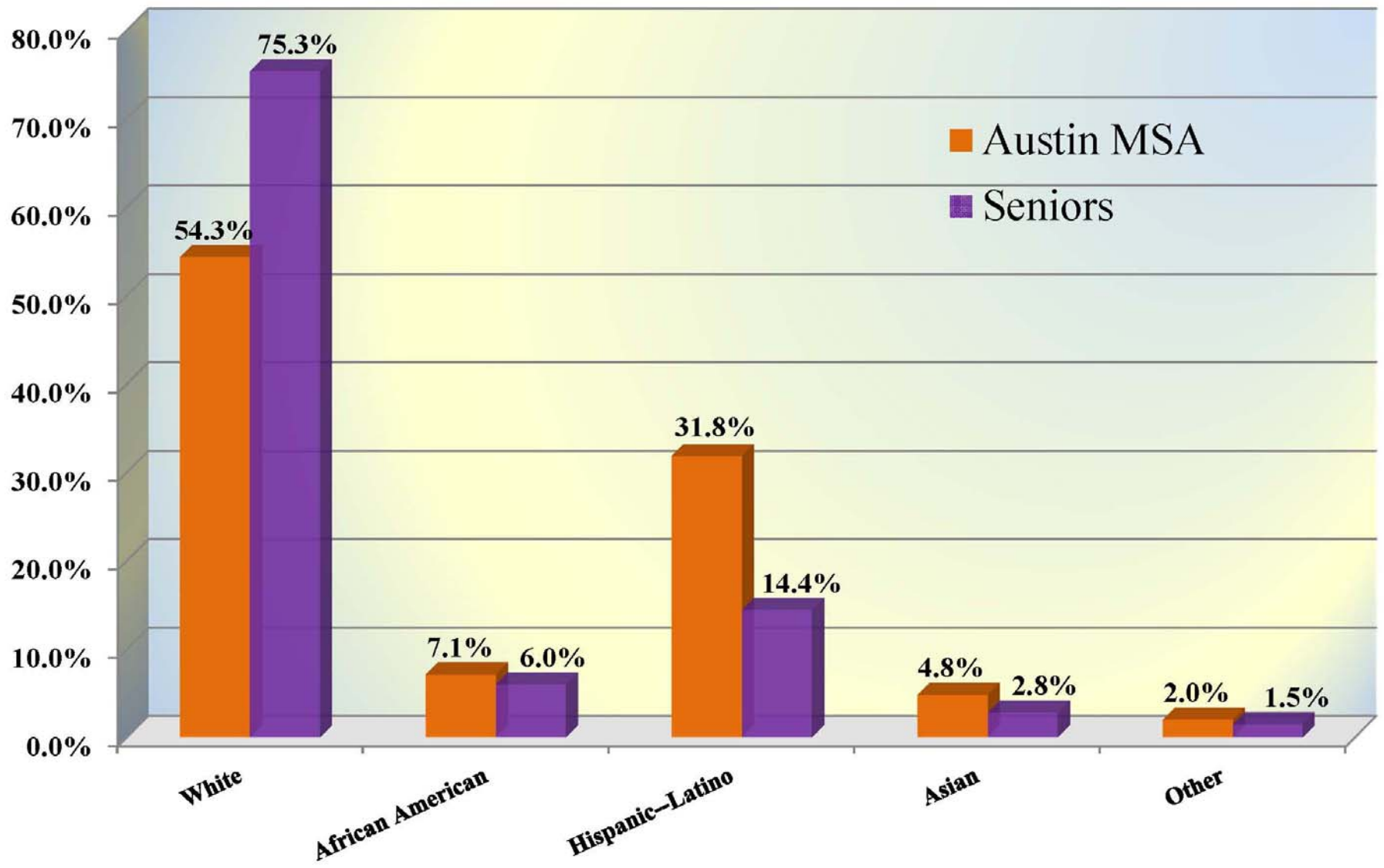
Age Structure Change: 2000 to 2010, Austin MSA



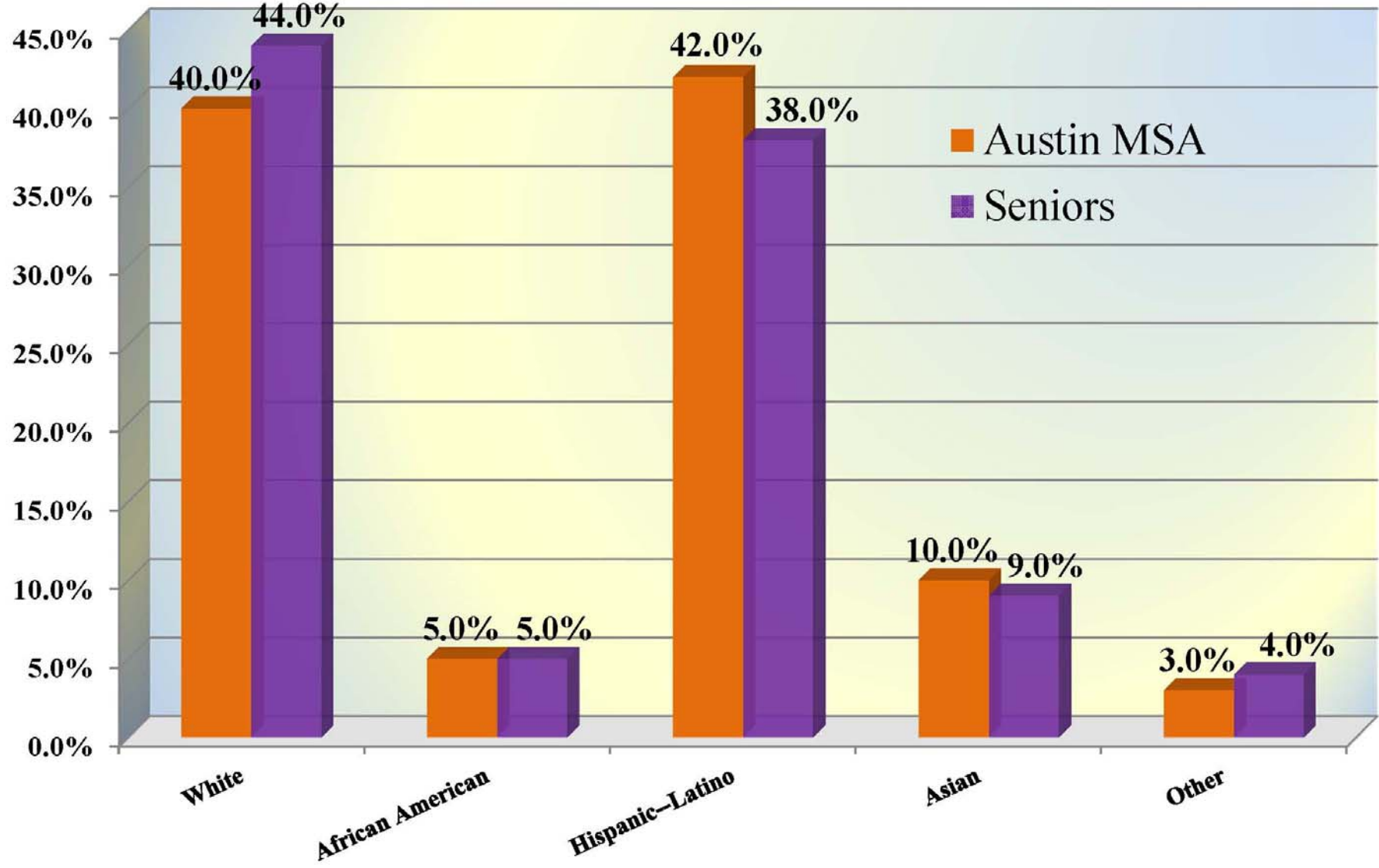
Senior Share of Total MSA Population: 2010 and 2040



Race and Ethnicity, 2010, Total MSA and Seniors



Race and Ethnicity, 2040, Total MSA and Seniors

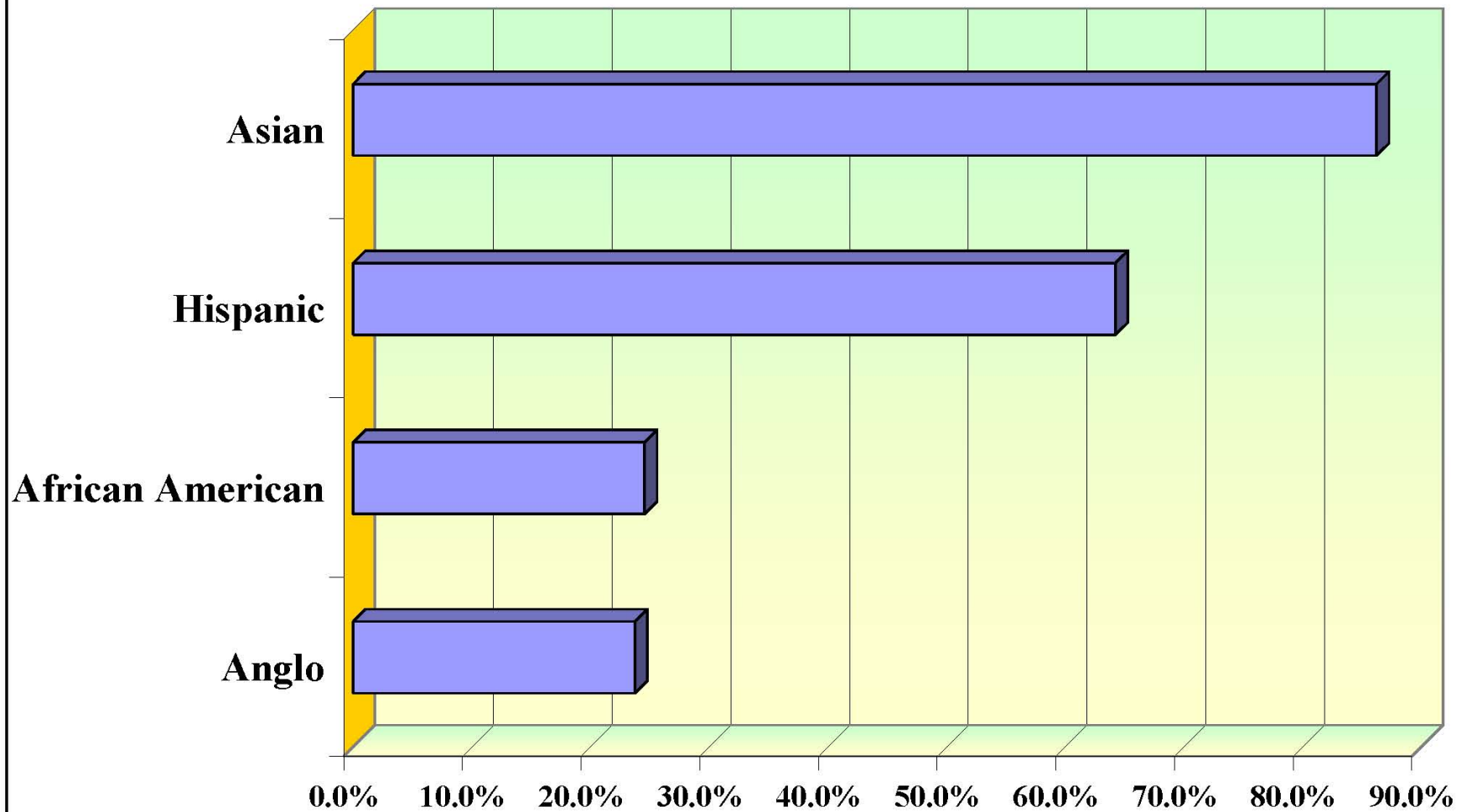


Growth and Diversification

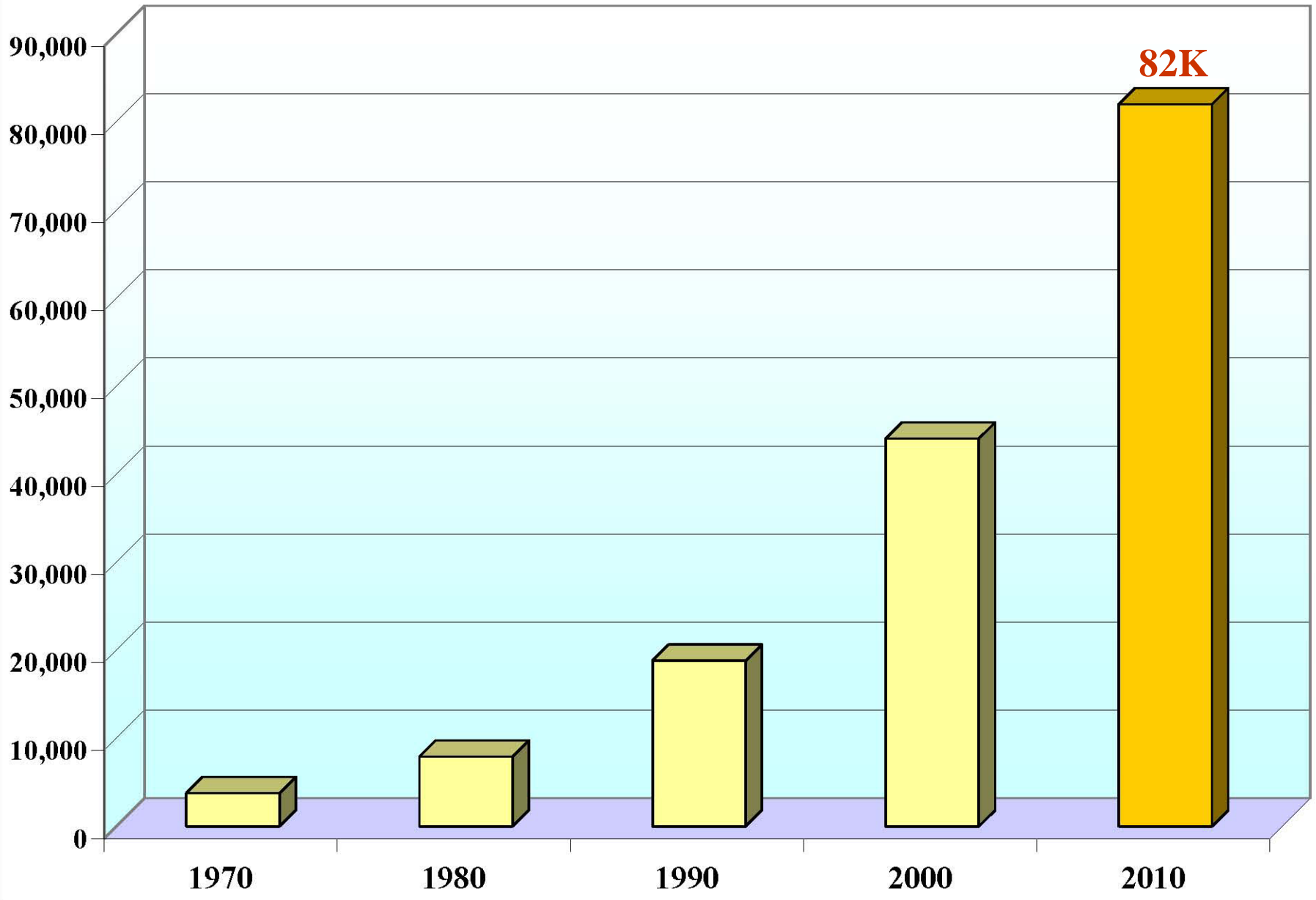
1. Long-term, sustained, rapid population growth.
2. Profound Racial and Ethnic Diversification.
3. Spatial divisions more distinct.
4. Age structure changing dramatically.

5. The Asian Boom.

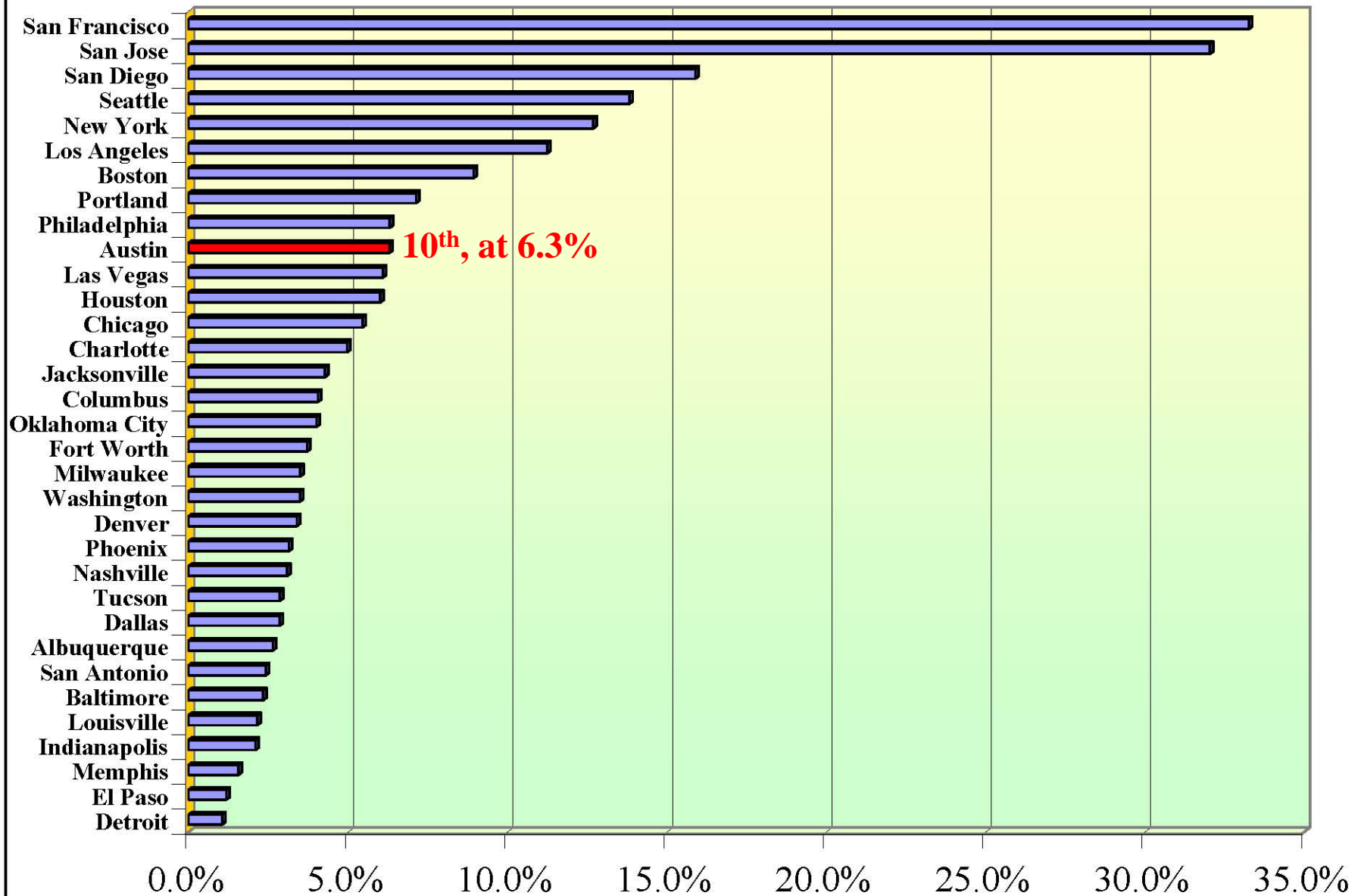
Austin MSA, Percentage Growth by Racial and Ethnic Group, 2000 to 2010



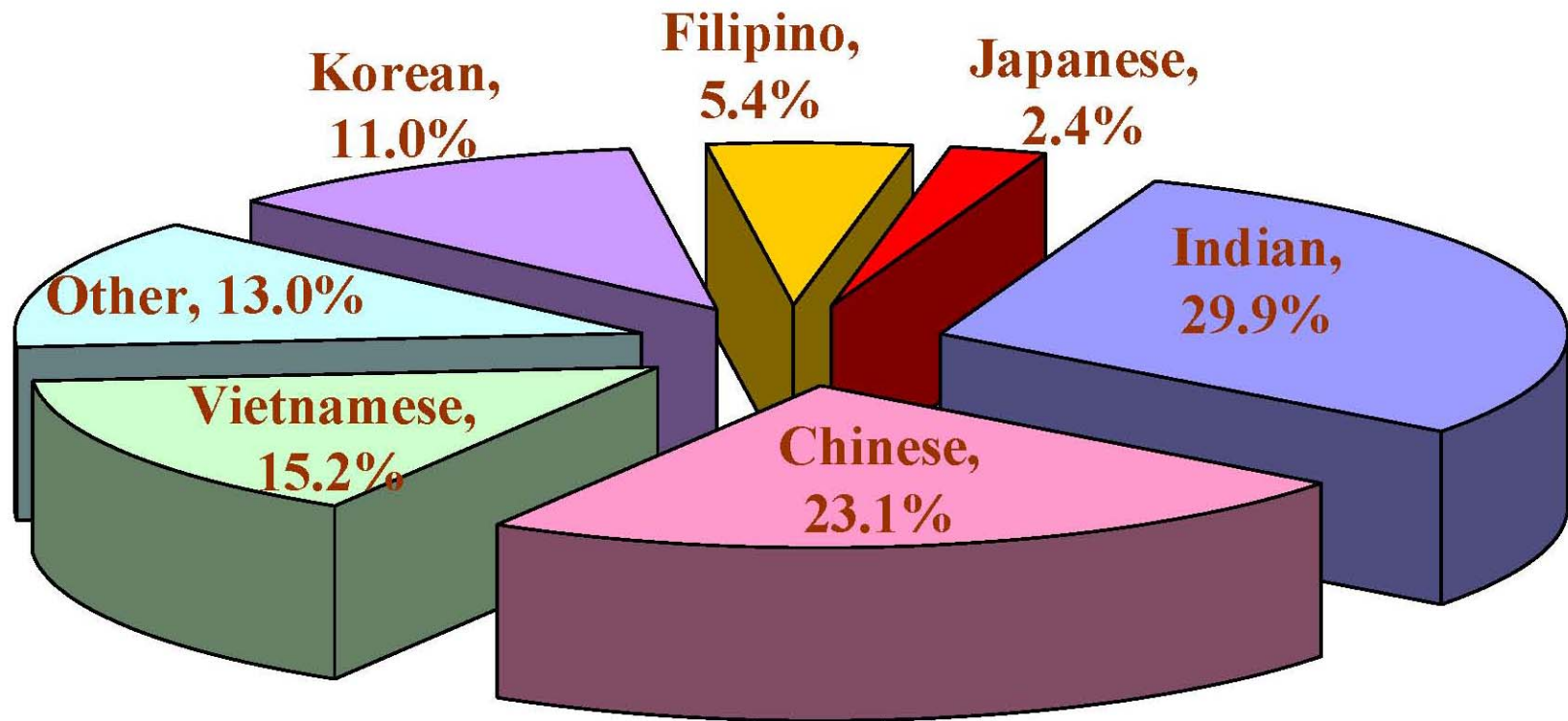
Total Asian Population Over Time, 1970 to 2010, Austin MSA



Asian Shares of Total Population: Large US Cities, 2010



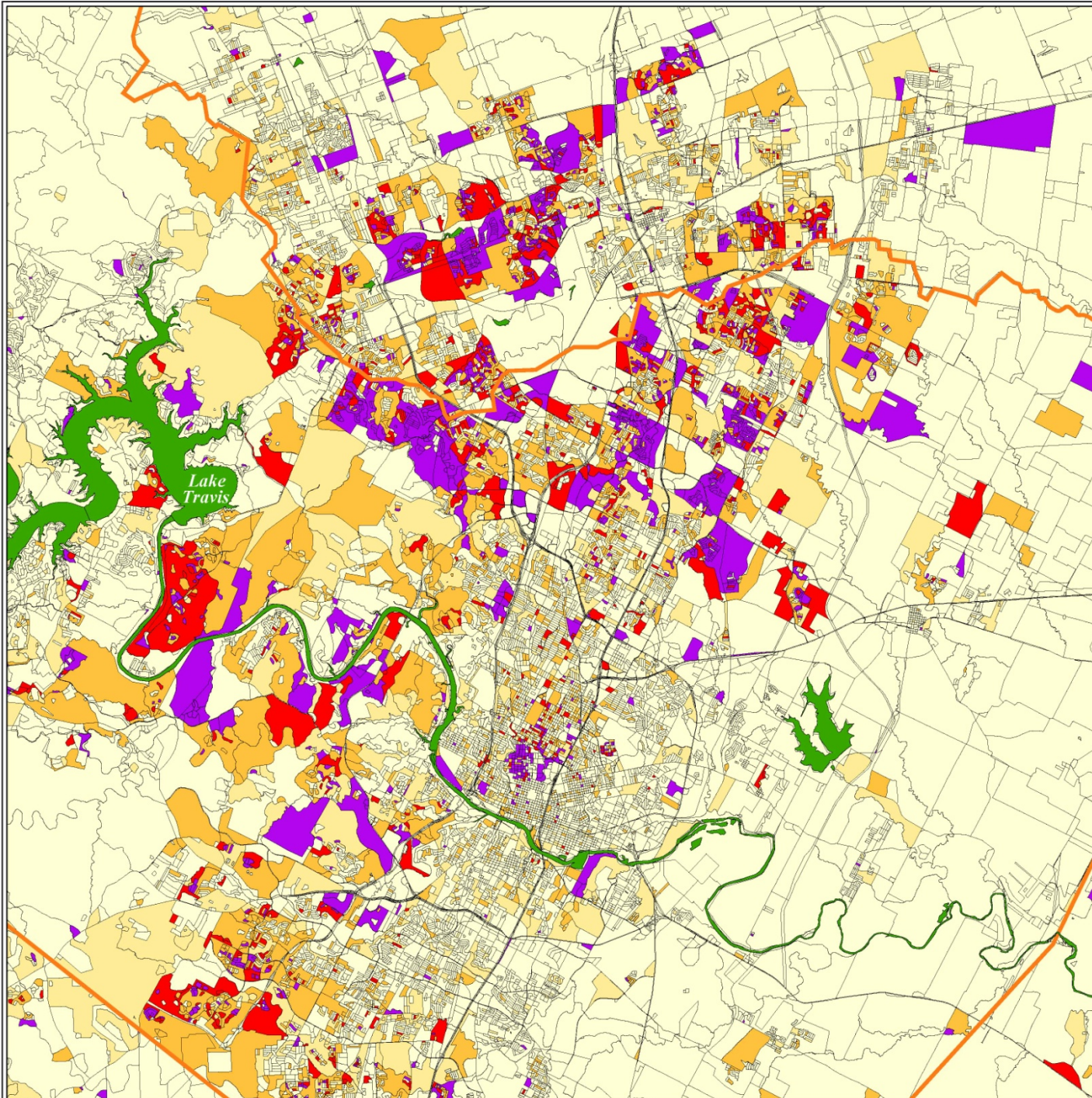
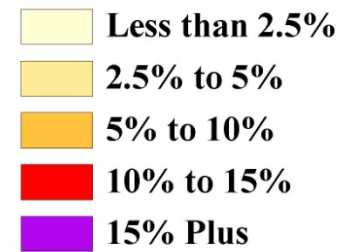
Breakout of Asians in Austin, Census 2010



Asian Population Concentrations

Austin, Texas
Census 2010 Data

Percentage of the total
Population that is
Asian



Growth and Diversification

1. Long-term, sustained, rapid population growth.
2. Profound Racial and Ethnic Diversification.
3. Spatial divisions more distinct.
4. Age structure changing dramatically.
5. The Asian Boom.
- 6. Political diversification?**

Proposition 3 Results: The 10-1 Plan

November 6, 2012

Percent of Voters Who Voted
For Proposition 3, by Precinct,
City of Austin.

**Overall Percentage
in favor of
Proposition 3 = 60.1%**

Percent For

