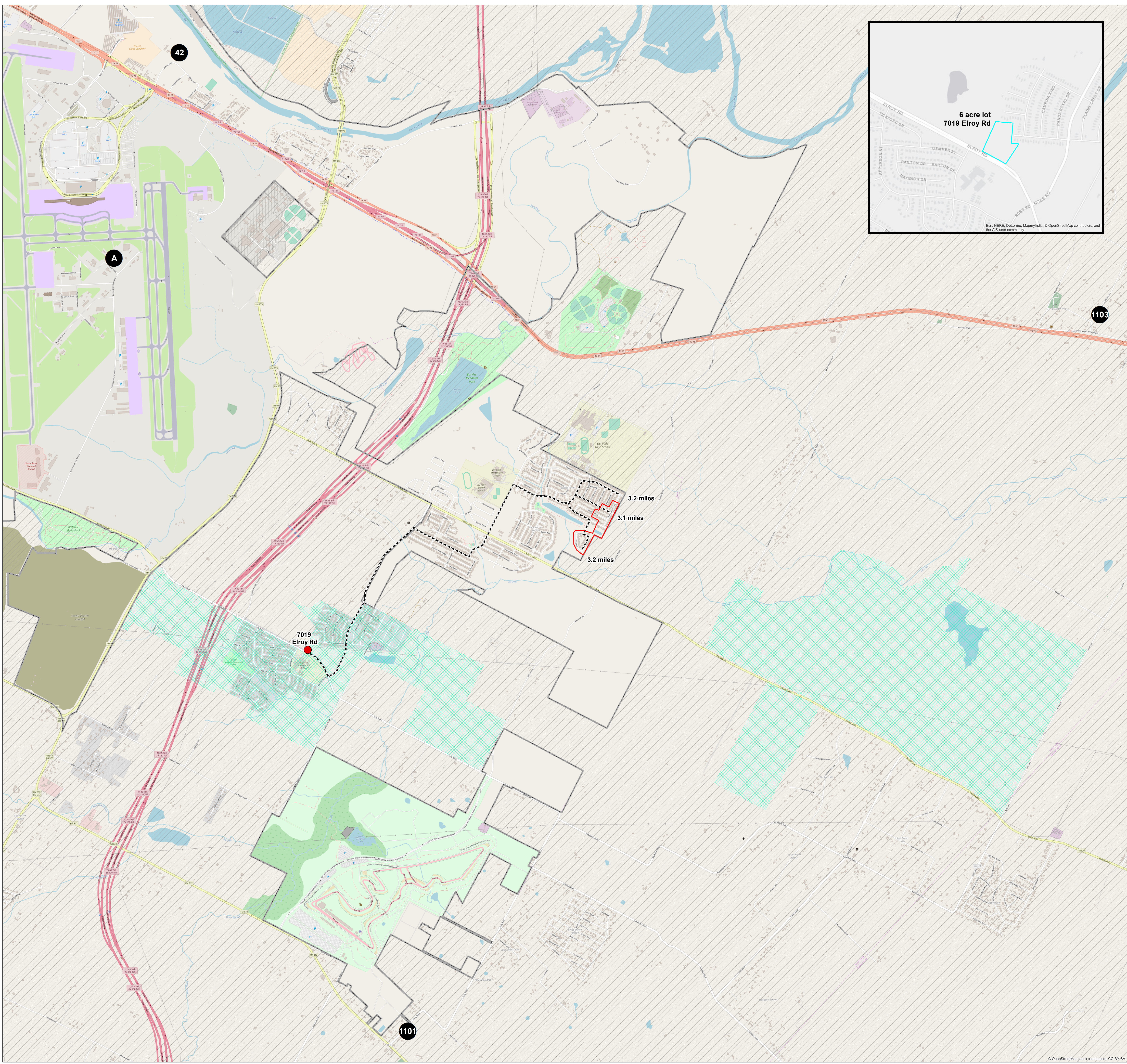
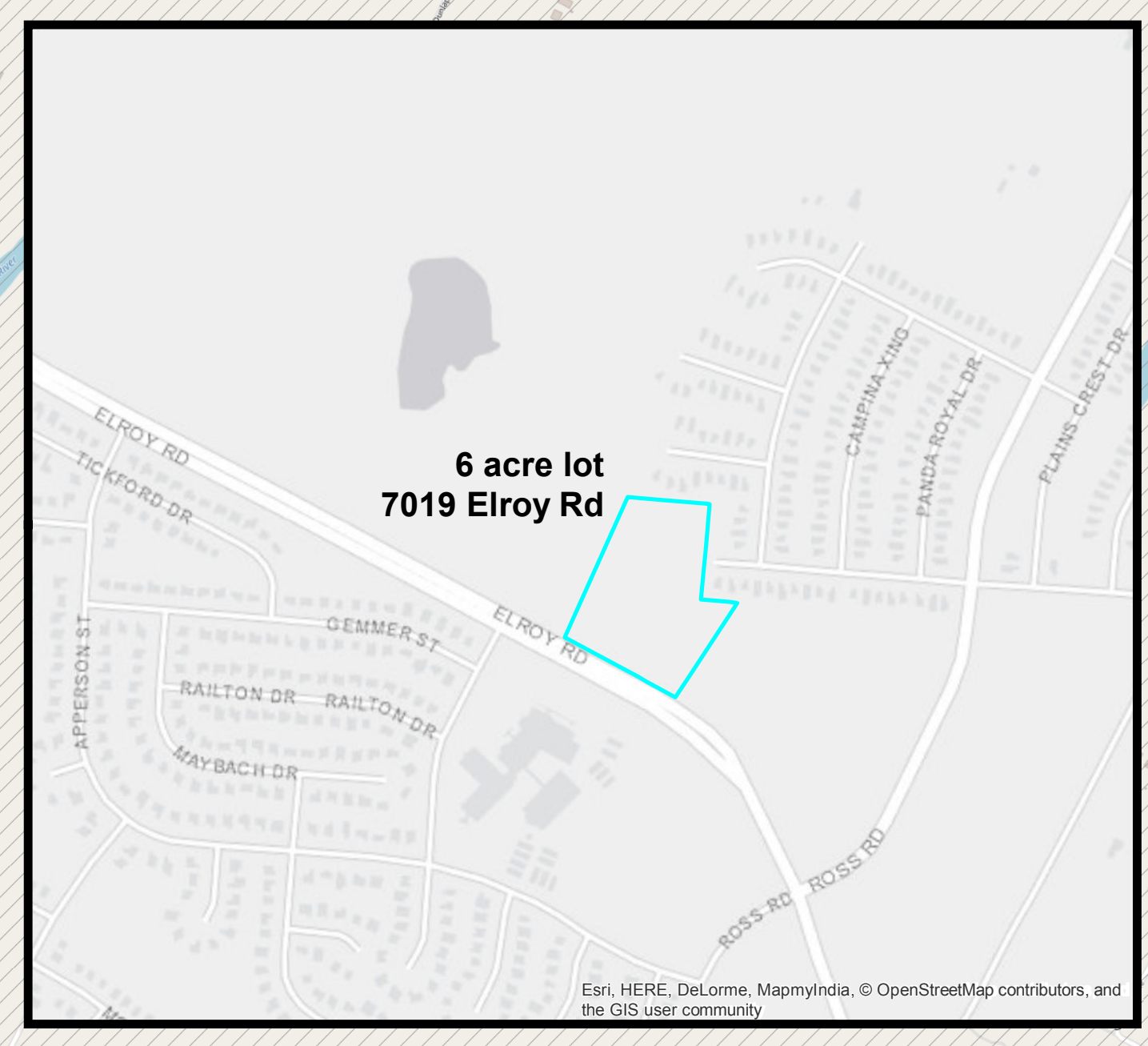




Austin Fire Department
Del Valle
Neighborhood Meeting
August 8, 2018



- New Fire Station Location
- Existing Fire/EMS Station
- City of Austin (full purpose)
- Limited Purpose
- Outside City of Austin
- Insurance Service Office (ISO) Class 10 homes
- Distance from New Fire Station

Fire/EMS Station Goals

- Improve response into Del Valle area
- Improve the current ISO Class 10 rating by providing a station closer than 5 road miles to Berdoll Farms
- Be a good addition to both AFD & EMS system
 - Access to major roadways
 - Access to South ABIA terminal
- Be operational as soon as possible (goal is 2 years)
- Have the ability to house an Engine, Aerial/Ladder, Ambulance, and Brush Truck

Map is for general use only
 Purpose of map is provide location of city-owned fire station lot, along with distance to Berdoll Farms. Info is calculated by the city's GIS system, and may differ slightly from actual driving distances.

N

0 0.25 0.5 1 Miles

© OpenStreetMap (and) contributors, CC-BY-SA