

the people's gallery
2015 exhibition

Welcome to the 11th Annual People's Gallery Exhibition!

Each year the Cultural Arts Division of the Economic Development Department presents the People's Gallery exhibition, designed to showcase regional artistic endeavors and to encourage public dialogue, understanding, and enjoyment of the visual arts. Since 2005, Austin City Hall has been an annual showcase for works by Austin-area artists. The goal of the program is to present exhibitions that reflect the artistic excellence and diversity of Austin and promote the City's cultural and economic initiatives. The works presented span a range of sensibilities and materials while holding to a high standard of quality in the field. The success of this program would not be possible without the artists, galleries, collectors, and museums, which generously loan their pieces to the exhibition for the enjoyment of residents and visitors.

Exhibition Hours

The 2015 exhibition will be on display from February 27, 2015 through January 7, 2016. Visitors can view the exhibition during regular business hours, Monday–Friday, 8 a.m.–5 p.m.

Featured This Year

The 2015 exhibition presents works by over 100 artists. A panel of arts professionals reviewed approximately 1,250 entries from more than 300 local artists and art organizations. The panelists this year were painter Cornelius Carter; artist and arts educator William Cauthern; and artist and assistant director of The Serie Project and Coronado Studio, Paloma Mayorga. The exhibition was managed and designed by exhibition coordinator Suzanne Burton.

On the first floor is a special exhibit celebrating the 30th anniversary of the City of Austin's Art in Public Places program (AIPP). Established by the City in 1985, the AIPP program collaborates with local and nationally known artists to create cultural landmarks for the city. These artworks incorporate our community's history and values, and have become cornerstones of Austin's identity.

On the second floor, you will find a special exhibit of photographs courtesy of United Way for Greater Austin (UWATX). UWATX is a local nonprofit and community service organization providing resources and volunteer opportunities with local Austin charities since 1924. UWATX inspires, leads, and unites an eclectic community of philanthropists to help the working poor overcome barriers to economic opportunity and ensure that Greater Austin continues to thrive.

Also located on the second floor is the Creative Learning Initiative (CLI) special exhibit of student works by Austin Independent School District students. CLI seeks to provide a quality arts-rich education for each and every child in Austin ISD, as well as professional development and ongoing support for teachers in arts-based instruction strategies through the collaborative support

between Austin ISD, the City of Austin, MINDPOP, local artists, businesses, and philanthropic organizations.

The People's Choice

Each year the public is invited to vote for their favorite artwork! Gallery visitors can submit their top three choices by paper ballot. The ballots and ballot box are located in the second floor lobby of City Hall. Each person is allowed only one ballot, and no anonymous ballots will be accepted. "The People's Choice" is selected from among the top-recommended artworks each year. Previous People's Choice artworks and other artworks from the City's permanent collection are ineligible for this year's vote. Voting ends October 31, 2015, and the winner will be announced at the opening reception of next year's People's Gallery exhibition.

Support Your Local Artists

Many of the works in the exhibition are for sale by the artist. Pricing and contact information are included in the gallery guide. Artworks that are not for sale are labeled "NFS."

Call for Artworks

Artists may receive information about future calls for entries by calling (512) 974-7700 or by signing up for the Cultural Arts Division e-newsletter at www.austincreates.com.

For More Information

For more information about group tours, stop by the Economic Development Department in City Hall, suite 2030. You may also call (512) 974-7819 or e-mail peoplesgallery@austintexas.gov.

Connect and Share!

Facebook: [facebook.com/PeoplesGalleryATX](https://www.facebook.com/PeoplesGalleryATX)

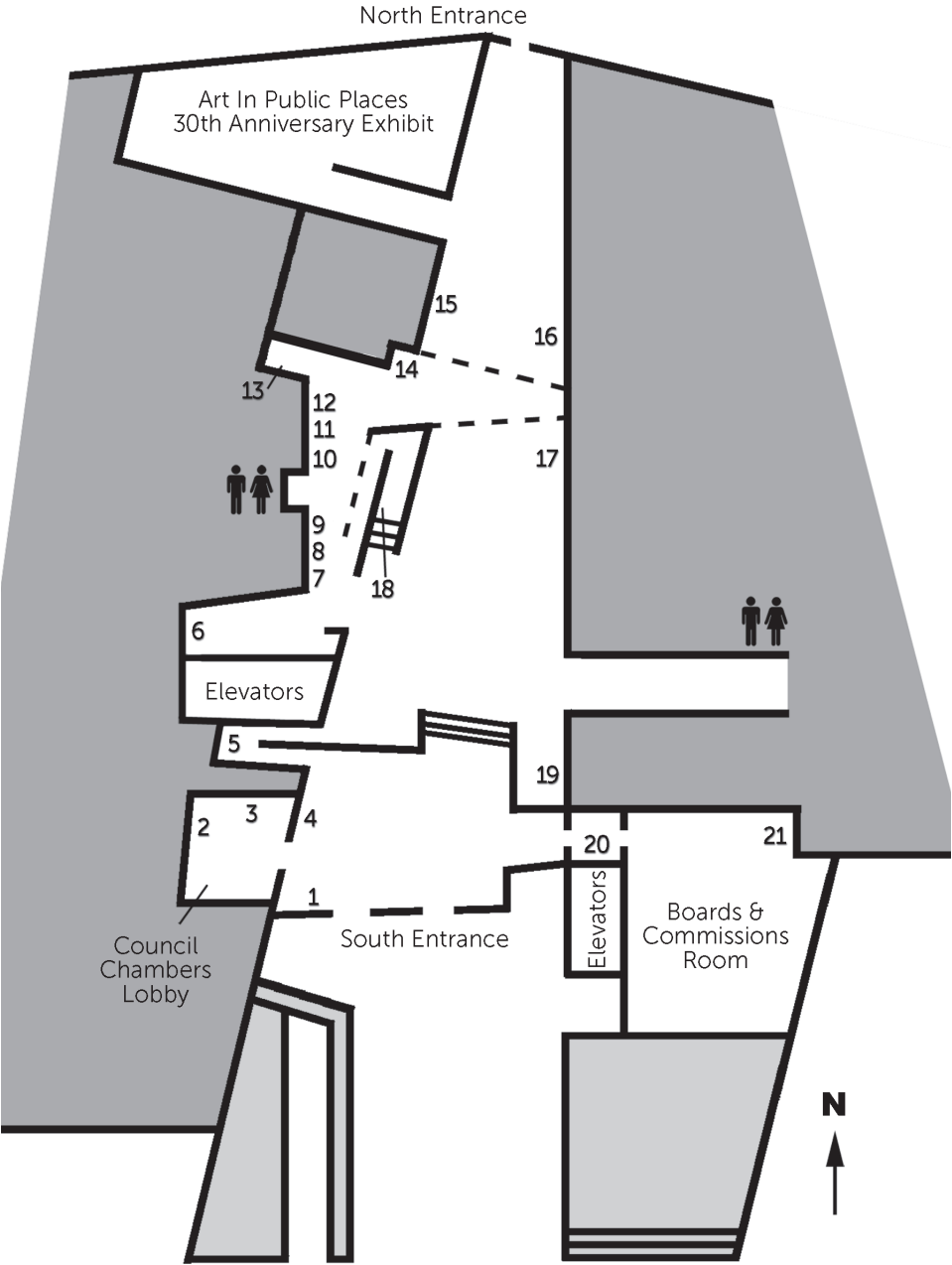
Instagram: @CityOfAustinArts

Twitter: @EconVitalityATX

All artworks in this exhibition appear courtesy of the artist unless otherwise noted.

Thank you for visiting!

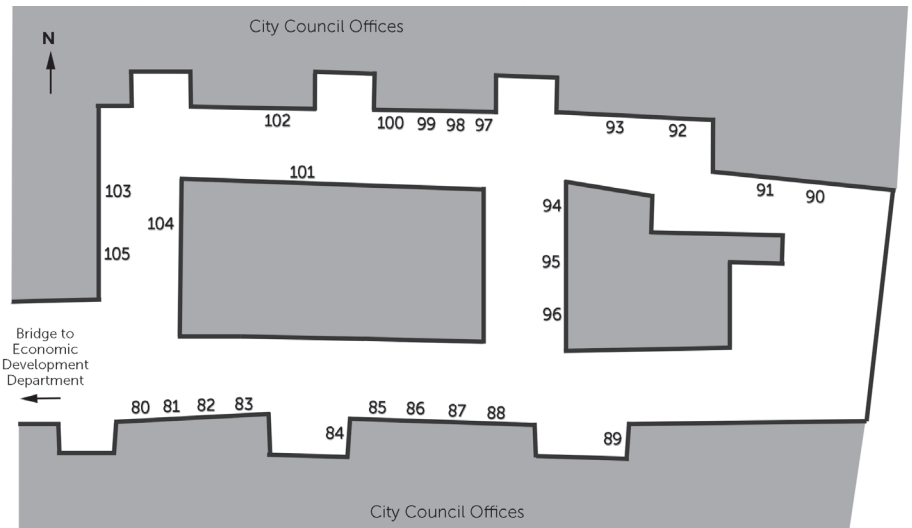
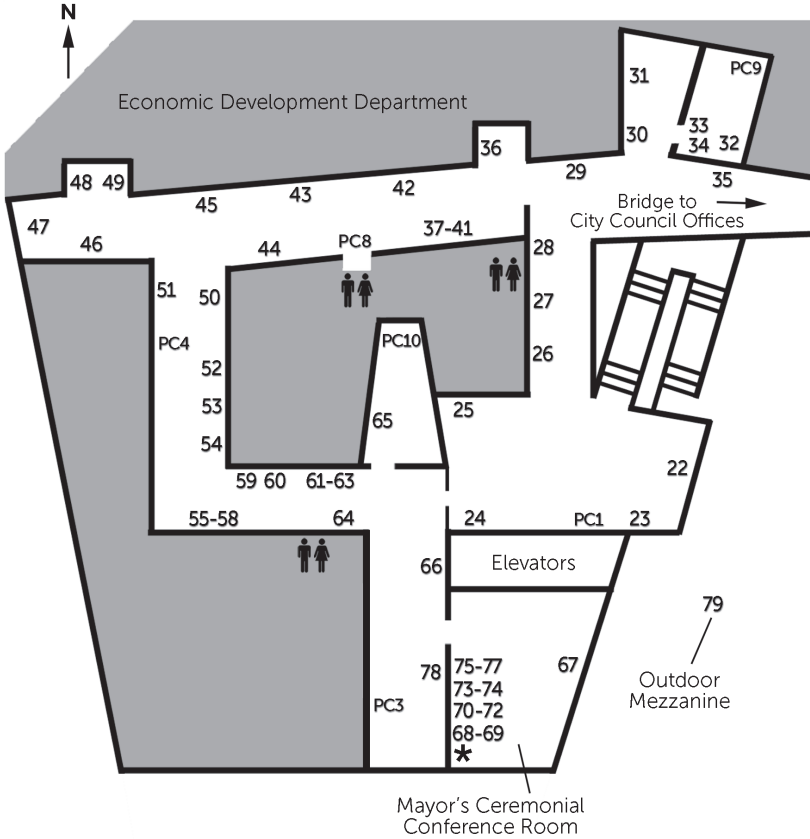
1st floor



- 1 Stephen Dubov
Foldedglass: Tower of Light, powder-coated steel, aluminum, laminated safety glass, 2011
steve@atelier3-d.com, \$8,000
- 2 Amy Scofield
Yellow, digital print, 2010
www.amyscofield.com, NFS
- 3 Jay Schneider
Breathe in Austin, photographic print on metal, neon, 2014
jaybschneider.com, \$2,375
- 4 Norman Bean
Capitol of Texas, graphite on paper, 2014
normanbeanfineart.com, \$4,000
- 5 Greg Davis
Nectar of Immortality, India, photograph with archival inks on canvas, 2013
gregdavisphotography.com, \$5,995
- 6 Hallie Rae Ward
Hallie Beams: On and On, painted wood, mirrors, yarn, light fixture, 2014
hallieraeward.com, \$2,000
- 7 Richard Ewen
April Showers, watercolor, 2014
watercolors-of-france.com, \$2,600
- 8 Richard Ewen
Four Red Bags, watercolor, 2014
watercolors-of-france.com, \$2,600
- 9 Richard Ewen
Elephant Ears, watercolor, 2014
watercolors-of-france.com, \$2,600
- 10 Michael McCarthy
Rabbit and Hoop For Hazel, paint on recycled and found wood, metal, 2014
ceasadh@yahoo.com, NFS
- 11 Michael McCarthy
Hank Williams Sr., paint on recycled and found wood, metal, 2014
ceasadh@yahoo.com, \$300

- 12 Michael McCarthy
Horse in Hoop, paint on recycled and found wood, metal, 2014
ceasadh@yahoo.com, \$500
- 13 Jason Thomas
E.R.F. 101, latex on raw canvas, 2014
cargocollective.com/jasonthomas, \$1,000
- 14 Croix Williamson
Caylith, steel, 2013
croix@metalworkaustin.com, \$12,000
- 15 Faith Schexnayder and Ryan Day
Welcome to Austin, copper leaf on carving foam, 2014
flatforkstudio.com, \$20,000
- 16 Cindy Debold
In and Out of the Box, steel, painted found wood, 2014
cindydebold.com, \$6,500
- 17 Gracelee Lawrence
I Was Worst to the One I Loved Best, powder-coated steel, latex, 2014
graceleelawrence.com, \$700
- 18 Elisa Gomez
Linger, oil pastel, acrylic, latex, and ink on canvas, 2013
elisagomezart.com, \$6,000
- 19 Greg Davis
The Pilgrim, photograph with archival inks on rag paper, 2013
gregdavisphotography.com, \$1,295
- 20 Leslie Kell
Think This Through With Me, archival inks and acrylic paint on canvas, found wood, 1998
lesliekell.com, \$864
- 21 Valerie Fowler
Earth Has a Long Memory; Dedicated to the Lost Pines of Bastrop County, oil on canvas, 2013
valeriefowler.com, \$6,000

2nd floor



- 22 Croix Williamson
Traveler, steel, 2012
croix@metalworkaustin.com, \$5,000
- 23 Lawrence Jolly
Sedona Lake, acrylic on wood, 2013
lawrencejolly.com, \$3,850
- PC1 Hank Waddell
West Texas Beach Ball, mesquite, 2004
Collection of the City of Austin, PEOPLE'S CHOICE 2005
hankwaddell.com, NFS
- 24 Jonathan Grider
She Was..., acrylic on canvas, 2013
jonathangrider.com, \$2,000
- 25 Richard Ewen
Deux Tutus, watercolor, 2012
watercolors-of-france.com, \$2,600
- 26 Kristie Zamrazil
Three Girls, gicleé print on canvas, 2000
kristiezamrazil.com, \$500 framed/\$300 unframed
- 27 Jai Cochran
Inside the Aspen Wood, oil on canvas, 2013
jaicochranart@yahoo.com, \$2,900
- 28 Denise Fulton
Thorns, acrylic on board, 2013
denisemfulton.com, \$900
- 29 Lee Edwards
This is Not a Drill, mixed-media collage, 2014
ledwards.phd@att.net, \$2,000
- 30 Sarah Collins
Red Violet, fabric, discarded clothing, thread, 2010
scollinsart.com, NFS
- 31 Hollis Hammonds
In Ruins: Inferno, charcoal and acrylic paint on canvas, 2012
hollishammonds.com, \$2,000

- 32 Michael McCarthy
Austin Circus, paint on recycled and found wood, metal, electric motor, 2014
ceasadh@yahoo.com, \$1,200
- 33 John Sager
Starfield, found object assemblage, 2011
jonisager@yahoo.com, \$2,500
- 34 Andrew Bellatti Green
Stasis, mahogany, string, brass, 2013
andrewbgreen.com, \$350
- PC9 Bethany Cobb
We Regret To Inform You..., screen print on cotton sateen fabric, netting, cotton thread, 2010
Collection of the City of Austin, PEOPLE'S CHOICE 2013
bethanycobb@live.com, NFS
- 35 Barbara Irwin
Untitled, found object assemblage, 2011
foundobjectart.com, \$3,800
- 36 Barbara Irwin
Yes (Mirror-Mirror Series), found object assemblage, 2013
foundobjectart.com, \$815
- 37 Matt Rainwaters
Mia, 3, photograph, 2014
Courtesy of United Way for Greater Austin
uwatx.org/struggle, NFS
- 38 Matt Rainwaters
Erik, 29, photograph, 2014
Courtesy of United Way for Greater Austin
uwatx.org/struggle, \$625
- 39 Matt Rainwaters
Jana, 36, photograph, 2014
Courtesy of United Way for Greater Austin
uwatx.org/struggle, \$625
- 40 Matt Rainwaters
Sidney, 44, photograph, 2014
Courtesy of United Way for Greater Austin
uwatx.org/struggle, \$625

- 41 Matt Rainwaters
Suzette, 25 / Aaron, 1, photograph, 2014
Courtesy of United Way for Greater Austin
uwatx.org/struggle, \$625
- 42 Jenn Hassin
Chaos Contained, newspapers, matte medium, 2014
jennhassin.com, \$38,000
- PC8 Jim Beckett
Lady Bird Lake: Morning Light, archival inkjet print, 2011
Collection of the City of Austin, PEOPLE'S CHOICE 2012
saintt.smugmug.com, NFS
- 43 Amy Scofield
Red, lipstick and ink on Joss paper, clothespins, 2007
amyscofield.com, \$2,800
- 44 Dameon Lester
Tree Ring (Re-cut), paper pulp and felt on painted plywood, 2013/2014
dameonlester.com, \$3,000
- 45 Brent Baggett
Substrate, wood, acrylic, acrylic paint, 2012
oculiststudio@gmail.com, \$10,000
- 46 Melissa Borrell
Accordion Wall Piece, hand-dyed solar shade remnants, 2014
melissaborrell.com, \$7,500
- 47 Gracelee Lawrence
Pastorealis, powder-coated steel, painted steel, plastic, tracing
paper, epoxy resin, 2014
graceleelawrence.com, \$1,000
- 48 Valerie Fowler
The Deeper You Go, the Richer It Gets, oil on canvas, 2012
valeriefowler.com, \$4,000
- 49 Sally Weber
Variations #1, photographic transparencies mounted on glass,
maple, 2009
sallyweber.com, \$1,500
- 50 Kiah Denson
Enraptured, acrylic on canvas, 2014
kiahdenson.com, \$2,850

- 51 Jonathan Grider
Tribute, acrylic on canvas, 2010
jonathangrider.com, NFS
- PC4 Roy Mata
Buba at Barton Springs, C-print, 2003
Collection of the City of Austin, PEOPLE'S CHOICE 2008
roymata9.wix.com/ram9, NFS
- 52 Heather Parrish
Transit A, photopolymer gravure on fabric and hand-dyed paper, 2014
heatherparrish.net, \$1,950
- 53 Heather Parrish
Transit B, photopolymer gravure on fabric and hand-dyed paper, 2014
heatherparrish.net, \$1,950
- 54 Leslie Kell
No Simple Highway, archival inks and acrylic paint on canvas,
brushed steel, red oak, leather, 2014
lesliekell.com, \$1,728
- 55 Richard Casteel
Into the Unknown, digital photograph, 2014
flickr.com/photos/richardcasteel, \$300
- 56 Warren Sawyer
Crashes, oil paint and newspaper on paper, 2013
warrensawyer.com, \$450
- 57 Faustinus Deraet
Observing Ania 3 (Ghent), photograph, 2011
faustinus.com, \$400
- 58 Christopher Locke
Post-it Portraits, ink, graphite, and paint on sticky notes, 2014
heartlessmachine.com, NFS
- 59 Sandy Carson
Burnt Orange Muscle, archival digital print, 2014
sandycarson.com, \$1,200
- 60 Paul Del Bosque
Chicano Optimism, serigraph print, 2013
Courtesy of The Serie Project
serieproject.org, \$250

- 61 Kendra Kinsey
Seed Bed, ink, pencil, paper, thread, 2013
kendra-kinsey.com, \$800
- 62 Ryan Obermeyer
Dvdjj, digital photograph on canvas, 2012
ryanobermeyer.com, \$300
- 63 Ryan Obermeyer
No Pescado (Arriba), digital photograph on canvas, 2012
ryanobermeyer.com, \$300
- 64 Dameon Lester
Landscape Box Series: Equal Parts Glow and Blur, wood, foam, fiberglass, paint, 2001
dameonlester.com, NFS
- 65 John Emereson
Can Eye Get a Witness, steel, 2014
johnemersonjohnemerson.com, \$6,000
- PC10 Shalena White
Mountain Laurel Mandala II, Texas mountain laurel seeds, sewing pins, 2013
Collection of the City of Austin, PEOPLE'S CHOICE 2014
shalenawhite.com, NFS
- 66 Jess Hardcastle Beal
Regeneration, photographic encaustic printed with carbon pigment inks on cotton rag paper mounted to basswood panel, 2014
jhardcastle.com, \$2,100
- 67 Leslie Kell
Moving Into the Universe, archival inks and acrylic paint on canvas, brushed steel, copper, red oak, 2014
lesliekell.com, \$940
- * Damian Priour (1949-2011)
Symbol Bowl, limestone, glass, 2004
Collection of the City of Austin, Gift of Thomas Properties Group Inc.
NFS
- 68 Kelly Steinke
Sea-Drift, altered book pages, plaster cast, wax, thread, beeswax, pigment, 2014
kellysteinke.com, \$800

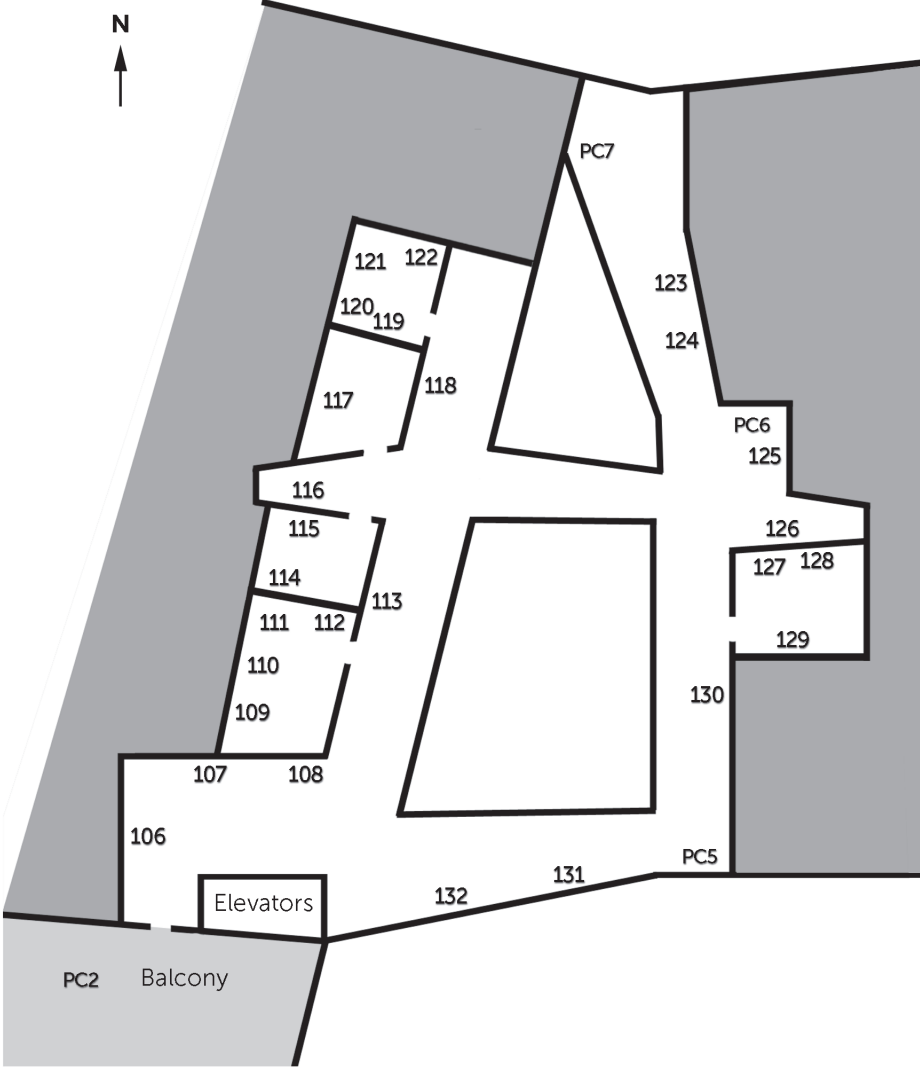
- 69 Katy David
Latent Beginning, aniline dye and varnish on eggshell, 2014
katydauidart.com, \$330
- 70 Mimi Bardagjy
Bifurcated Sea Spine, unglazed porcelain, 2014
texpot@gmail.com, \$500
- 71 Mimi Bardagjy
Carapace I, glazed porcelain, 2014
texpot@gmail.com, \$500
- 72 Mimi Bardagjy
Carapace II, glazed porcelain, 2014
texpot@gmail.com, \$200
- 73 Patricia Greene
The Captive Graces, copper wire, plexiglass, 2014
patriciagreene_mx@yahoo.com, \$1,800
- 74 Patricia Greene
Choose Your Shoe Installation 7: Texas Boot, steel wire, 2014
patriciagreene_mx@yahoo.com, NFS
- 75 Elena Eidelberg
Cell Tower, bone china, ceramic decal, glaze, 2014
fourcornerstiles.com, \$75
- 76 Elena Eidelberg
Mickey D's, bone china, ceramic decal, glaze, 2013
fourcornerstiles.com, \$75
- 77 Elena Eidelberg
Flying Saucer, bone china, ceramic decal, glaze, 2013
fourcornerstiles.com, \$100
- 78 Lucy MacQueen
Lamar Bridge at Night, paint and gold leaf on panel and plexiglass, 2014
lucymacqueen.com, \$3,000
- PC3 Martha Gannon
View from the Mayor's Window, metallic prints, stainless steel,
Plexiglas, 2005
Collection of the City of Austin, PEOPLE'S CHOICE 2007
marthagannon.com, NFS

- 79 Brent Baggett
Strata, cedar, 2013
oculiststudio@gmail.com, \$12,000
- 80 Diana Padron
What Should I Do?, chalk on paper, 2014
Courtesy of the Austin Independent School District
NFS
- 81 Sarah Christensen
El Carro, intaglio print, 2014
Courtesy of the Austin Independent School District
NFS
- 82 Hannah McChesney
Moqueur, ink on paper, 2014
Courtesy of the Austin Independent School District
NFS
- 83 Jonathan Lo
Inner Flame, pencil, colored pencil, and permanent marker on
paper, 2014
Courtesy of the Austin Independent School District
NFS
- 84 Daniel Zaragoza
Untitled, photograph, 2014
Courtesy of the Austin Independent School District
NFS
- 85 Hattie Lindell
Ethereal, pencil on paper, 2014
Courtesy of the Austin Independent School District
NFS
- 86 Cynthia Madrigal Tomás
Sun and Moon Composition, watercolor and oil pastels on paper, 2014
Courtesy of the Austin Independent School District
NFS
- 87 Caroline Boyle
Explorer, paint and marker on paper, 2014
Courtesy of the Austin Independent School District
NFS

- 88 Jose Acosta
Transformation, mixed media, 2014
Courtesy of the Austin Independent School District
NFS
- 89 Diana Ruiz Trujeque
Fall, mixed media, 2014
Courtesy of the Austin Independent School District
NFS
- 90 Tillie Walden
Resting, chine-collé print, 2014
Courtesy of the Austin Independent School District
NFS
- 91 Aidan Moyers
The Wringer, linoleum print, 2014
Courtesy of the Austin Independent School District
NFS
- 92 Bieke Campos-Rivera
Cubist Cat, collage, 2014
Courtesy of the Austin Independent School District
NFS
- 93 Missael Torres
Past Memories, oil pastel on paper, 2014
Courtesy of the Austin Independent School District
NFS
- 94 Adrian Alejandro De La Cruz Garcia
Beetle, pencil on paper, 2014
Courtesy of the Austin Independent School District
NFS
- 95 Amelia Roberts
Oceanside Village, watercolor and pen on paper, 2014
Courtesy of the Austin Independent School District
NFS
- 96 Tate Smyser
Chroma, photograph, 2014
Courtesy of the Austin Independent School District
NFS

- 97 Sasha Pittman
Warm/Cool Zen Tangle Tree, colored pencil and permanent marker on paper, 2014
Courtesy of the Austin Independent School District
NFS
- 98 Roberto Jaimes Benitez
Go Against the Flow, digital photograph, 2014
Courtesy of the Austin Independent School District
NFS
- 99 Maddie Corum
The Conductor, digital photograph, 2014
Courtesy of the Austin Independent School District
NFS
- 100 Alex Slaughter
Birch Trees, graphite and watercolor on paper, 2014
Courtesy of the Austin Independent School District
NFS
- 101 John Burtrum
Art to the World, digital photograph, 2014
Courtesy of the Austin Independent School District
NFS
- 102 Jennifer Frias
Rare Flowers, mixed media on paper, 2014
Courtesy of the Austin Independent School District
NFS
- 103 Sarafina Fabris-Green
Accordion Boy, photograph, 2014
Courtesy of the Austin Independent School District
NFS
- 104 Maxine Reinig
Dream House, watercolor on paper, 2014
Courtesy of the Austin Independent School District
NFS
- 105 Stephanie Hernandez
Half Mystery, digital photograph, 2014
Courtesy of the Austin Independent School District
NFS

3rd floor



- PC2 Benge Elliott Jr.
Three Sheep, steel, 2003
Collection of the City of Austin, PEOPLE'S CHOICE 2006
rr12ironworks.com, NFS
- 106 Nancy Grobe
Carlo, oil on canvas, 2014
nancygrobe.com, NFS
- 107 Thomas Evans
Borderland, oil on canvas, 2013
thomasevansart.com, \$12,000
- 108 Liana Tomchesson
ATX Heritage Tree Ordinance, sterling silver, stainless steel,
powder-coated wire, painted found wood, 2013
lianatomchesson.com, \$2,000
- 109 Scott David Gordon
Patryce "Patches" King, pigment inkjet print on Baryta photo
paper, 2013
scottdavidgordon.com, \$600, edition 2/5
- 110 Scott David Gordon
Maura Grace Ambrose of Folk Fibers, pigment inkjet print on
Baryta photo paper, 2013
scottdavidgordon.com, \$675, edition 2/5
- 111 Scott David Gordon
Graham Reynolds, pigment inkjet print on Baryta photo paper, 2013
scottdavidgordon.com, \$550, edition 2/5
- 112 Monica Alfonso
Reticence, colored pencil on paper, 2014
monicajalfonso.com, \$850
- 113 G52
Teamwork: Dream Work, spray paint on repurposed wood, 2014
g52cube.com, \$300
- 114 Melanie Hickerson
Mom at Nursing Home Window, acrylic on canvas, 2013
mellypaint.blogspot.com, \$850
- 115 Debangana Banerjee
Holding Roots, Sprouting Routes II, etching, 2008
debangana.weebly.com, \$400

- 116 Greg Davis
Rudraksh Baba, India, photograph with archival inks on rag paper, 2013
gregdavisphotography.com, \$2,195
- 117 Brian Barnes
Forest, metallic print, 2014
fractasia.com, \$1,100
- 118 Philip Rogers
Synchronicity, photograph, 2014
philiprogersphotography.com, \$1,200
- 119 Carol Hayman
Bows, photo intaglio print, 2014
carolhayman.weebly.com, \$250
- 120 Matthew McCoy
Going Over the Fence, bronze, steel, 2014
mlawrencemccoy.com, \$2,700
- 121 Carol Hayman
Child Manikins, photo intaglio print, 2014
carolhayman.weebly.com, \$250
- 122 Carol Hayman
Hands, photo intaglio print, 2014
carolhayman.weebly.com, \$250
- PC7 Shawn Smith
Vicious Venue, painted balsa wood, found objects, 2008
Collection of the City of Austin, PEOPLE'S CHOICE 2011
shawnsmithart.com, NFS
- 123 Chris Chappell
Park Party, oil on panel, 2013
chrischappellart.com, \$4,200
- 124 Chris Chappell
East Austin Music Festival, oil on panel, 2013
chrischappellart.com, \$4,200
- PC6 Caprice Pierucci
Birch Cascade, birch, pine, 2009
Collection of the City of Austin, PEOPLE'S CHOICE 2010
capricepierucci.com, NFS

- 125 Lawrence Jolly
Big Cactus, oil on cypress, 2011
lawrencejolly.com, \$3,600
- 126 Heidi Landau
The Day You Were Swallowed, graphite on paper, 2010
theheidilandau.com, \$3,500
- 127 Adrian Whipp
Untitled #1, wet-plate collodion photograph, archival inkjet print, 2014
lumieretintype.com, \$1,000
- 128 Adrian Whipp
Untitled #3, wet-plate collodion photograph, archival inkjet print, 2014
lumieretintype.com, \$1,000
- 129 Susi Brister
R & T and Frosted Mongolian in Fallen Leaves, archival pigment
print on photo rag paper, 2009
susibrister.com, \$2,500
- PC5 James Tisdale
Squirrley, terracotta, 2008
Collection of the City of Austin, PEOPLE'S CHOICE 2009
jamestisdale.com, NFS
- 130 Philip Rogers
Lotus, photograph, 2014
philprogersphotography.com, \$1,200
- 131 Croix Williamson
Gyre Icon, steel, 2013
croix@metalworkaustin.com, \$7,000
- 132 Griffon Ramsey
The Space Between, cedar, 2015
griffonramsey.com, \$5,200

Artist Index

All artworks are numbered according to location, starting in the 1st floor atrium and ending on the 3rd floor.

ARTIST	ARTWORK #	ARTIST	ARTWORK #
Acosta, Jose	88	Deraet, Faustinus	57
Alfonso, Monica	112	Dubov, Stephen	1
Baggett, Brent	45, 79	Edwards, Lee	29
Banerjee, Debangana	115	Eidelberg, Elena	75-77
Bardagjy, Mimi	70-72	Elliott, Benge	PC2
Barnes, Brian	117	Emerson, John	65
Bean, Norman	4	Evans, Thomas	107
Beckett, Jim	PC8	Ewen, Richard	7-9, 25
Benitez, Roberto Jaimes	98	Fabris-Green, Sarafina	103
Borrell, Melissa	46	Fowler, Valerie	21, 48
Boyle, Caroline	87	Frias, Jennifer	102
Brister, Susi	129	Fulton, Denise	28
Burtrum, John	101	G52	113
Campos-Rivera, Bieke	92	Gannon, Martha	PC3
Carson, Sandy	59	Gomez, Elisa	18
Casteel, Richard	55	Gordon, Scott David	109-111
Chappell, Chris	123,124	Green, Andrew Bellatti	34
Christensen, Sarah	81	Greene, Patricia	73, 74
Cobb, Bethany	PC9	Grider, Jonathan	24, 51
Cochran, Jai	27	Grobe, Nancy	106
Collins, Sarah	30	Hammonds, Hollis	31
Corum, Maddie	99	Hardcastle Beal, Jess	66
David, Katy	69	Hassin, Jenn	42
Davis, Greg	5, 19, 116	Hayman, Carol	119, 121, 122
Day, Ryan	15	Hernandez, Stephanie	105
De La Cruz Garcia, Adrian Alejandro	94	Hickerson, Melanie	114
Debold, Cindy	16	Irwin, Barbara	35, 36
Del Bosque, Paul	60	Jolly, Lawrence	23, 125
Denson, Kiah	50	Kell, Leslie	20, 54, 67

People's Choice selections are numbered PC1–PC10 and are located on the 2nd and 3rd floors.

The artwork labeled "✱" is located on the 2nd floor.

ARTIST	ARTWORK #	ARTIST	ARTWORK #
Kinsey, Kendra	61	Schneider, Jay	3
Landau, Heidi	126	Scofield, Amy	2, 43
Lawrence, Gracelee	17, 47	Slaughter, Alex	100
Lester, Dameon	44, 64	Smith, Shawn	PC7
Lindell, Hattie	85	Smyser, Tate	96
Lo, Jonathan	83	Steinke, Kelly	68
Locke, Christopher	58	Thomas, Jason	13
MacQueen, Lucy	78	Tisdale, James	PC5
Madrigal Tomás, Cynthia	86	Tomchesson, Liana	108
Mata, Roy	PC4	Torres, Missael	93
McCarthy, Michael	10-12, 32	Waddell, Hank	PC1
McChesney, Hannah	82	Walden, Tillie	90
McCoy, Matthew	120	Ward, Hallie Rae	6
Moyers, Aidan	91	Weber, Sally	49
Obermeyer, Ryan	62, 63	Whipp, Adrian	127, 128
Padron, Diana	80	White, Shalena	PC10
Parrish, Heather	52, 53	Williamson, Croix	14, 22, 131
Pierucci, Caprice	PC6	Zamrazil, Kristie	26
Pittman, Sasha	97	Zaragoza, Daniel	84
Priour, Damian	✱		
Rainwaters, Matt	37-41		
Ramsey, Griffon	132		
Reinig, Maxine	104		
Roberts, Amelia	95		
Rogers, Philip	118, 130		
Ruiz Trujeque, Diana	89		
Sager, John	33		
Sawyer, Warren	56		
Schexnayder, Faith	15		

Acknowledgements

Exhibition guide created by Suzanne Burton and Lani Gonzalez

Thank you to those who assisted with the 2015 exhibition:

Security

David Lothery
Liz Galindo
Ramon Everett
Cameron Shepherd
BB Garcia
Jennifer Clapper
Bianca Bizzell
Jim Williams
Jaime Piedra
Luis Esparza

Building Services

Julie Cossette
Pat D'Angelo
Tom Garcia
Joe Leyva
Mario Sanchez

Custodial

Mike Castilleja
Glenda Washington
Victor Recinos
Mary Luna
Jimmy Johnson
Brandon Williams

Gail Chavez
Kay Guedea

Economic Development

Kevin Johns
Rodney Gonzales
Sylvovia Holt-Rabb
Megan Crigger
Vicky Valdez
Margaret Stenz
Jean Graham
Anna Bradley
Carrie Brown
Alyssa Zinsser
Melodye Foust
Davetta Martinez
Ben Ramirez
Linda Hayes
Terry Franz
Terra Goolsby
Calder Kamin
Brogan Ward
Anna Dougherty
Melissa Alvarado
Susan Lambe
Jim Butler
Margaret Shaw

