

COLONY PARK SUSTAINABLE COMMUNITY INITIATIVE



IMAGE PREFERENCE SURVEY RESULTS

October 19, 2013

IMAGE PREFERENCE SURVEY RESULTS

The Colony Park Sustainable Community Initiative team held a community workshop on October 19th to complete an Image Preference Survey (IPS). An IPS is used to gauge participants' opinions on what future development should look like.

The following are summary slides for the eight categories discussed. The summary slides include photos of the five highest and lowest ranking images, survey scores, and any comments made by participants during the discussion. These results will be used to create plan recommendations.

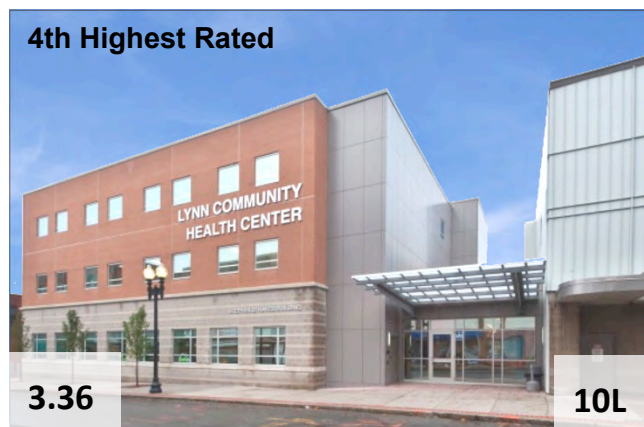
FIRST IMPRESSIONS – HIGHEST RATED



- Multi-use
- Mixed-use



- Interesting design
- Shade
- Functional
- Shared space, play space



- Medical facility



FIRST IMPRESSIONS – LOWEST RATED

Lowest Rated



- Looks like our neighborhood
- No one cares, failed
- Deserted / failed development

2nd Lowest Rated



- Status quo
- Barren landscape
- Uninviting
- Resembles west Texas – nothing
- Power lines
- No interaction

3rd Lowest Rated



- Not inviting
- Not attractive

4th Lowest Rated



5th Lowest Rated



HOUSING TYPES – HIGHEST RATED

Highest Rated



- Inviting
- Attractive
- Clean

2nd Highest Rated



- Large yard

3rd Highest Rated



4th Highest Rated



5th Highest Rated



- Accessible
- Affordable
- Nice looking

HOUSING TYPES – LOWEST RATED



-Doesn't belong (high rise looks out of place)



-High rises (negative) – too tall, blocks view downtown



OPEN SPACE – HIGHEST RATED



- Swimming
- Lap pool for exercise



- Nice
- Sense of community



- Benches



- Idyllic
- Looks like Eden



OPEN SPACE – LOWEST RATED

Lowest Rated



-1.17

42R

- Shouldn't have
- Ugly water storage

2nd Lowest Rated



-0.03

39L

- Urban agriculture – fight diabetes, health issues, save gas
- Healthy living

3rd Lowest Rated



1.00

32R

- Not maintained
- Abandoned

4th Lowest Rated



0.48

36R

- Standing water (pollution and attracts animals)

5th Lowest Rated



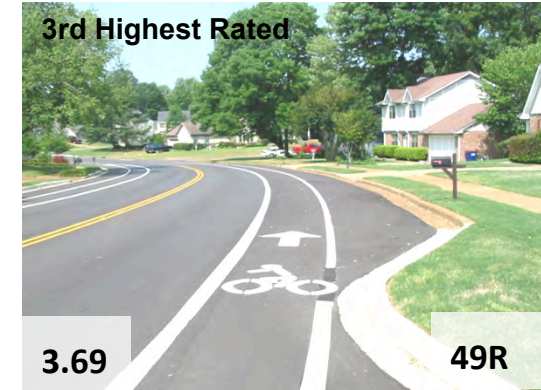
1.69

37L

STREETS – HIGHEST RATED



-Trees in the middle



-Bike facilities
-Neighborhood needs bike lanes



-Open
-Trim, well maintained
-Curbs



-Clear crossing to walk
-Designated crossing

STREETS – LOWEST RATED



- Dangerous
- Small
- Not enough trees
- Skinny road



PEDESTRIAN ROUTES – HIGHEST RATED

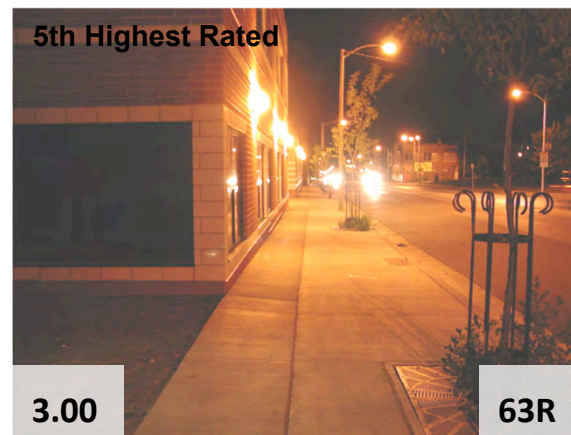


-Wide, no cracks
-Street trees

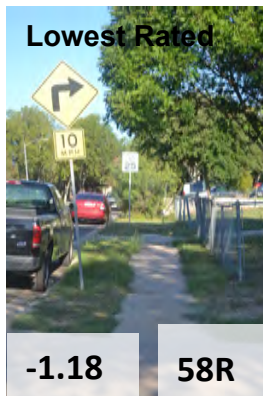
-Wide, no cracks
-Street trees



-Imagine riding with
neighbors, eating
-Nice to ride bike to



PEDESTRIAN ROUTES – LOWEST RATED



- Very narrow (street pressing on sidewalk)
- Not maintained



- Sidewalks skinny
- No trees or shade
- No traffic signs



- Too dark

RETAIL – HIGHEST RATED

Highest Rated



-Open space – but parking lot?

2nd Highest Rated



-Bank

3rd Highest Rated



4th Highest Rated

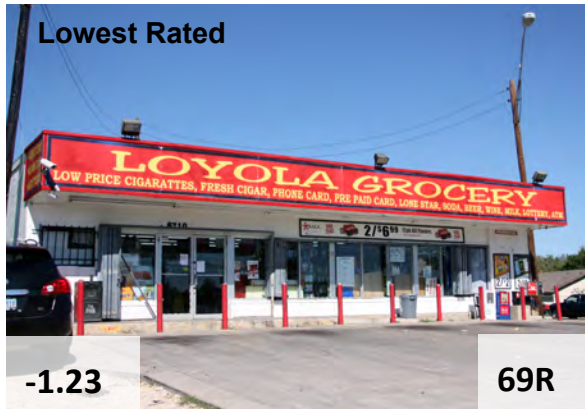


5th Highest Rated



-Chick-fil-A = yum

RETAIL – LOWEST RATED



-Drug deals



-Too many discount stores



-Trailer, seating, hang out
-Food trailer with covered outdoor seating



-No food trucks



NEIGHBORHOOD CENTER – HIGHEST RATED

Highest Rated



3.88

74R

- Use and form
- Doctor's office

2nd Highest Rated



3.52

77L

- Fountains

3rd Highest Rated



3.32

75L

4th Highest Rated



3.25

73R

- Out of scale for neighborhood

5th Highest Rated



3.22

75R

- Main street
- Congregate = community

NEIGHBORHOOD CENTER – LOWEST RATED

Lowest Rated



2nd Lowest Rated



3rd Lowest Rated



-Health center
-Space

4th Lowest Rated



5th Lowest Rated



QUALITY OF LIFE – HIGHEST RATED



-Shade area to dine

-Water park



-Farmers market



QUALITY OF LIFE – LOWEST RATED

Lowest Rated



-0.96

85L

- Waste of space
- Open and unmaintained

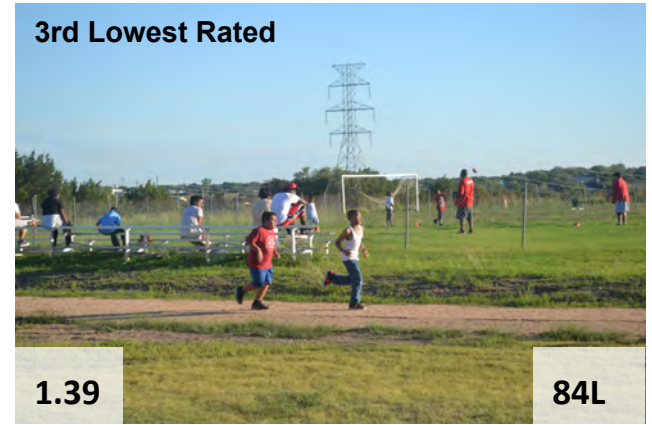
2nd Lowest Rated



-0.11

82R

3rd Lowest Rated



1.39

84L

4th Lowest Rated



2.26

80R

5th Lowest Rated



1.59

81L

- No giant parking lot but solar good