

**Austin-Bergstrom International Airport  
Aviation Activity Report  
Calendar Year 2020 vs 2019**

**Combined Terminals**

	3/2020	3/2019	Percent Change	1/2020 - 3/2020	1/2019 - 3/2019	Percent Change
<b>ABIA</b>						
<b>Total Passenger Activity</b>						
Domestic Enplaned Revenue	311,943	660,487	-52.77%	1,457,373	1,672,305	-12.85%
Domestic Deplaned Revenue	312,765	670,329	-53.34%	1,483,089	1,699,405	-12.73%
International Enplaned Revenue	7,913	16,271	-51.37%	30,817	33,037	-6.72%
International Deplaned Revenue	9,364	17,440	-46.31%	34,001	36,447	-6.71%
Domestic Enplaned Non-Revenue	11,945	13,011	-8.19%	39,733	39,835	-0.26%
Domestic Deplaned Non-Revenue	11,186	13,415	-16.62%	37,079	39,162	-5.32%
International Enplaned Non-Revenue	198	147	34.69%	481	352	36.65%
International Deplaned Non-Revenue	159	130	22.31%	409	307	33.22%
Intl Enplaned Pre-Cleared Revenue	1,218	2,622	-53.55%	5,483	6,679	-17.91%
Intl Deplaned Pre-Cleared Revenue	737	2,691	-72.61%	4,626	7,292	-36.56%
Intl Enplaned Pre-Cleared Non-Revenue	26	31	-16.13%	108	94	14.89%
Intl Deplaned Pre-Cleared Non-Revenue	14	37	-62.16%	100	106	-5.66%
South Terminal Domestic Enplaned Revenue	16,123	32,172	-49.88%	64,686	84,434	-23.39%
South Terminal Domestic Deplaned Revenue	16,898	33,992	-50.29%	68,025	87,828	-22.55%
South Terminal Domestic Enplaned Non-Revenue	91	109	-16.51%	299	304	-1.64%
South Terminal Domestic Deplaned Non-Revenue	75	132	-43.18%	288	362	-20.44%
<b>ABIA Passenger Totals</b>	<b>700,655</b>	<b>1,463,016</b>	<b>-52.11</b>	<b>3,226,597</b>	<b>3,707,949</b>	<b>-12.98</b>
<i>ABIA Enplaned Passenger Totals</i>	<i>349,457</i>	<i>724,850</i>	<i>-51.79</i>	<i>1,598,980</i>	<i>1,837,040</i>	<i>-12.96</i>
<i>ABIA Deplaned Passenger Totals</i>	<i>351,198</i>	<i>738,166</i>	<i>-52.42</i>	<i>1,627,617</i>	<i>1,870,909</i>	<i>-13.00</i>
<i>ABIA Domestic Passenger Totals</i>	<i>681,026</i>	<i>1,423,647</i>	<i>-52.16</i>	<i>3,150,572</i>	<i>3,623,635</i>	<i>-13.05</i>
<i>ABIA International Passenger Totals</i>	<i>19,629</i>	<i>39,369</i>	<i>-50.14</i>	<i>76,025</i>	<i>84,314</i>	<i>-9.83</i>

**CURRENT PASSENGER RECORD = 1,643,016 RECORD SET = JULY 2019**

**Total Aircraft Operations**

Air Carrier	10,329	11,718	-11.85%	32,242	32,075	0.52%
Commuter & Air Taxi	1,049	1,747	-39.95%	3,567	4,258	-16.23%
Military	392	898	-56.35%	1,256	2,454	-48.82%
General Aviation						
Itinerant	2,215	3,703	-40.18%	8,753	10,515	-16.76%
Local	4	98	-95.92%	88	220	-60.00%
Total G.A.	<b>2,219</b>	<b>3,801</b>	<b>-41.62</b>	<b>8,841</b>	<b>10,735</b>	<b>-17.64</b>
<b>Total Operations</b>	<b>13,989</b>	<b>18,164</b>	<b>-22.99</b>	<b>45,906</b>	<b>49,522</b>	<b>-7.30</b>

**Austin-Bergstrom International Airport  
Aviation Activity Report  
Calendar Year 2020 vs 2019**

**By Terminal**

	3/2020	3/2019	Percent Change	1/2020 - 3/2020	1/2019 - 3/2019	Percent Change
<b><u>Barbara Jordan Terminal (BJT)</u></b>						
<b>Passenger Activity</b>						
Domestic Enplaned Revenue	311,943	660,487	-52.77%	1,457,373	1,672,305	-12.85%
Domestic Deplaned Revenue	312,765	670,329	-53.34%	1,483,089	1,699,405	-12.73%
International Enplaned Revenue	7,913	16,271	-51.37%	30,817	33,037	-6.72%
International Deplaned Revenue	9,364	17,440	-46.31%	34,001	36,447	-6.71%
Domestic Enplaned Non-Revenue	11,945	13,011	-8.19%	39,733	39,835	-0.26%
Domestic Deplaned Non-Revenue	11,186	13,415	-16.62%	37,079	39,162	-5.32%
International Enplaned Non-Revenue	198	147	34.69%	481	352	36.65%
International Deplaned Non-Revenue	159	130	22.31%	409	307	33.22%
Intl Enplaned Pre-Cleared Revenue	1,218	2,622	-53.55%	5,483	6,679	-17.91%
Intl Deplaned Pre-Cleared Revenue	737	2,691	-72.61%	4,626	7,292	-36.56%
Intl Enplaned Pre-Cleared Non-Revenue	26	31	-16.13%	108	94	14.89%
Intl Deplaned Pre-Cleared Non-Revenue	14	37	-62.16%	100	106	-5.66%
<b>Barbara Jordan Terminal Passenger Totals</b>	<b>667,468</b>	<b>1,396,611</b>	<b>-52.21</b>	<b>3,093,299</b>	<b>3,535,021</b>	<b>-12.50</b>
<i>BJT Enplaned Passenger Totals</i>	333,243	692,569	-51.88	1,533,995	1,752,302	-12.46
<i>BJT Deplaned Passenger Totals</i>	334,225	704,042	-52.53	1,559,304	1,782,719	-12.53
<i>BJT Domestic Passenger Totals</i>	647,839	1,357,242	-52.27	3,017,274	3,450,707	-12.56
<i>BJT International Passenger Totals</i>	19,629	39,369	-50.14	76,025	84,314	-9.83
<b><u>South Terminal (ST)</u></b>						
<b>Passenger Activity</b>						
South Terminal Domestic Enplaned Revenue	16,123	32,172	-49.88%	64,686	84,434	-23.39%
South Terminal Domestic Deplaned Revenue	16,898	33,992	-50.29%	68,025	87,828	-22.55%
South Terminal Domestic Enplaned Non-Revenue	91	109	-16.51%	299	304	-1.64%
South Terminal Domestic Deplaned Non-Revenue	75	132	-43.18%	288	362	-20.44%
<b>South Terminal Passenger Totals</b>	<b>33,187</b>	<b>66,405</b>	<b>-50.02</b>	<b>133,298</b>	<b>172,928</b>	<b>-22.92</b>
<i>ST Enplaned Passenger Totals</i>	16,214	32,281	-49.77	64,985	84,738	-23.31
<i>ST Deplaned Passenger Totals</i>	16,973	34,124	-50.26	68,313	88,190	-22.54

**Austin-Bergstrom International Airport  
Aviation Activity Report  
Calendar Year 2020 vs 2019**

	3/2020	3/2019	Percent Change	1/2020 - 3/2020	1/2019 - 3/2019	Percent Change
<b><u>Total Cargo Activity</u></b>						
<b>Mail</b>						
Domestic Enplaned Mail	224,273	176,982	26.72%	759,057	593,617	27.87%
Domestic Deplaned Mail	573,266	696,160	-17.65%	2,071,623	2,010,312	3.05%
International Enplaned Mail	0	0	0.00%	0	0	0.00%
International Deplaned Mail	0	0	0.00%	0	110,830	-100.00%
South Terminal-Domestic Enplaned Mail	0	0	0.00%	0	0	0.00%
South Terminal-Domestic Deplaned Mail	0	0	0.00%	0	0	0.00%
<b>Mail Totals</b>	<b>797,539</b>	<b>873,142</b>	<b>-8.66</b>	<b>2,830,680</b>	<b>2,714,759</b>	<b>4.27</b>
<b>Cargo</b>						
Domestic Enplaned Cargo	4,742,209	5,840,367	-18.80%	14,346,691	15,062,044	-4.75%
Domestic Deplaned Cargo	7,546,086	5,897,233	27.96%	21,111,120	19,127,272	10.37%
International Enplaned Cargo	271,665	304,442	-10.77%	767,277	746,689	2.76%
International Deplaned Cargo	138,578	189,154	-26.74%	411,311	450,047	-8.61%
South Terminal-Domestic Enplaned Cargo	0	0	0.00%	0	0	0.00%
South Terminal-Domestic Deplaned Cargo	0	0	0.00%	0	0	0.00%
<b>Cargo Totals</b>	<b>12,698,538</b>	<b>12,231,196</b>	<b>3.82</b>	<b>36,636,399</b>	<b>35,386,052</b>	<b>3.53</b>
<b>Belly Freight</b>						
Domestic Enplaned Belly Freight	232,930	293,199	-20.56%	715,294	887,164	-19.37%
Domestic Deplaned Belly Freight	379,628	471,519	-19.49%	1,330,461	1,429,523	-6.93%
International Enplaned Belly Freight	235,880	445,612	-47.07%	1,033,720	1,164,077	-11.20%
International Deplaned Belly Freight	583,655	715,873	-18.47%	2,056,175	2,179,811	-5.67%
South Terminal-Domestic Enplaned Belly Frght	0	0	0.00%	0	0	0.00%
South Terminal-Domestic Deplaned Belly Frght	0	0	0.00%	0	0	0.00%
<b>Belly Freight Totals</b>	<b>1,432,093</b>	<b>1,926,203</b>	<b>-25.65</b>	<b>5,135,650</b>	<b>5,660,575</b>	<b>-9.27</b>
<b>Cargo Totals (Mail, Cargo, Belly Freight)</b>	<b>14,928,170</b>	<b>15,030,541</b>	<b>-0.68</b>	<b>44,602,729</b>	<b>43,761,386</b>	<b>1.92</b>
<i>Enplaned Cargo Totals</i>	<i>5,706,957</i>	<i>7,060,602</i>	<i>-19.17</i>	<i>17,622,039</i>	<i>18,453,591</i>	<i>-4.51</i>
<i>Deplaned Cargo Totals</i>	<i>9,221,213</i>	<i>7,969,939</i>	<i>15.70</i>	<i>26,980,690</i>	<i>25,307,795</i>	<i>6.61</i>
<i>Domestic Cargo Totals</i>	<i>13,698,392</i>	<i>13,375,460</i>	<i>2.41</i>	<i>40,334,246</i>	<i>39,109,932</i>	<i>3.13</i>
<i>International Cargo Totals</i>	<i>1,229,778</i>	<i>1,655,081</i>	<i>-25.70</i>	<i>4,268,483</i>	<i>4,651,454</i>	<i>-8.23</i>

CURRENT CARGO RECORD = 40,215,518

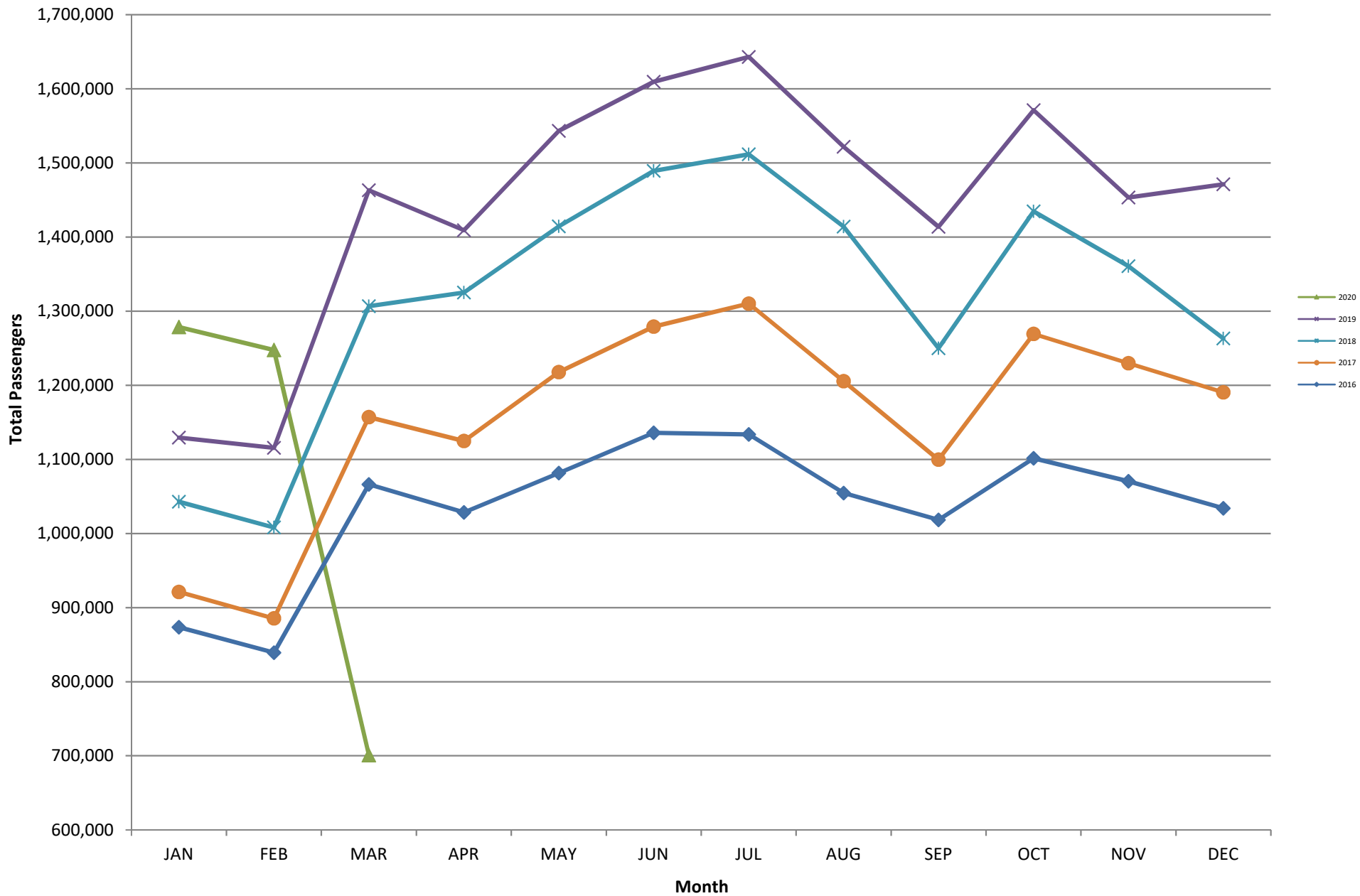
RECORD SET = MARCH 2001

**AUS – Airline Codes**  
March 2020

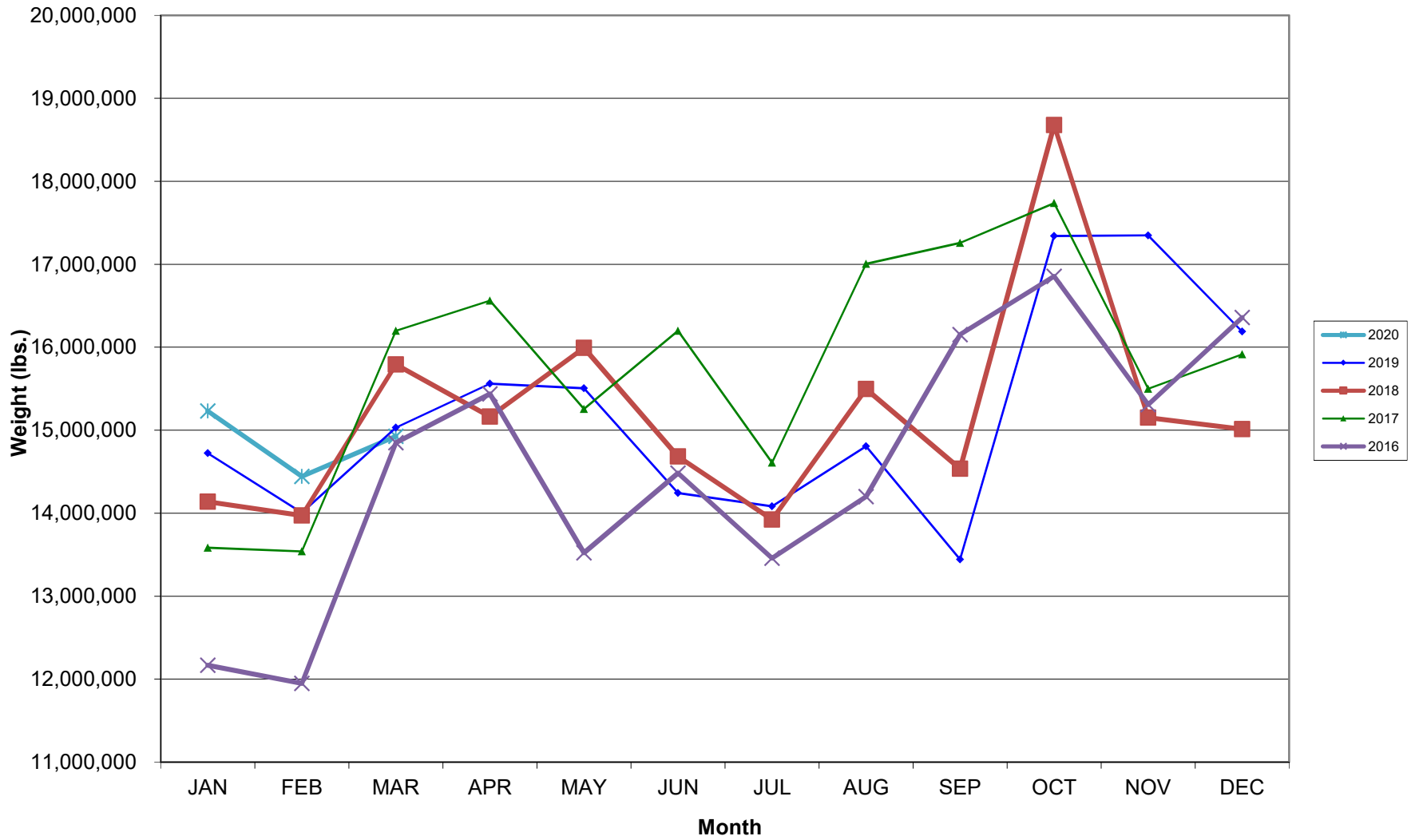
<b><u>Code</u></b>	<b><u>Carrier</u></b>
AM	Aerovias de Mexico S.A. de C.V. dba AeroMexico Airlines
AC	Air Canada
AS	Alaska Airlines, Inc.
G4	Allegiant Air, LLC
AA	American Airlines, Inc.
BA	British Airways Plc
DL	Delta Airlines
LH	Deutsche Lufthansa AG
F9	Frontier Airlines
B6	JetBlue Airways Corp.
LL	Miami Air International, Inc.
DI	Norwegian Air UK, Ltd.
WN	Southwest Airlines
NK	Spirit Airlines
SY	Sun Country Airlines (Charters)
UA	United Airlines, Inc.
VB	VivaAerobus

# AUSTIN PASSENGER TRAFFIC

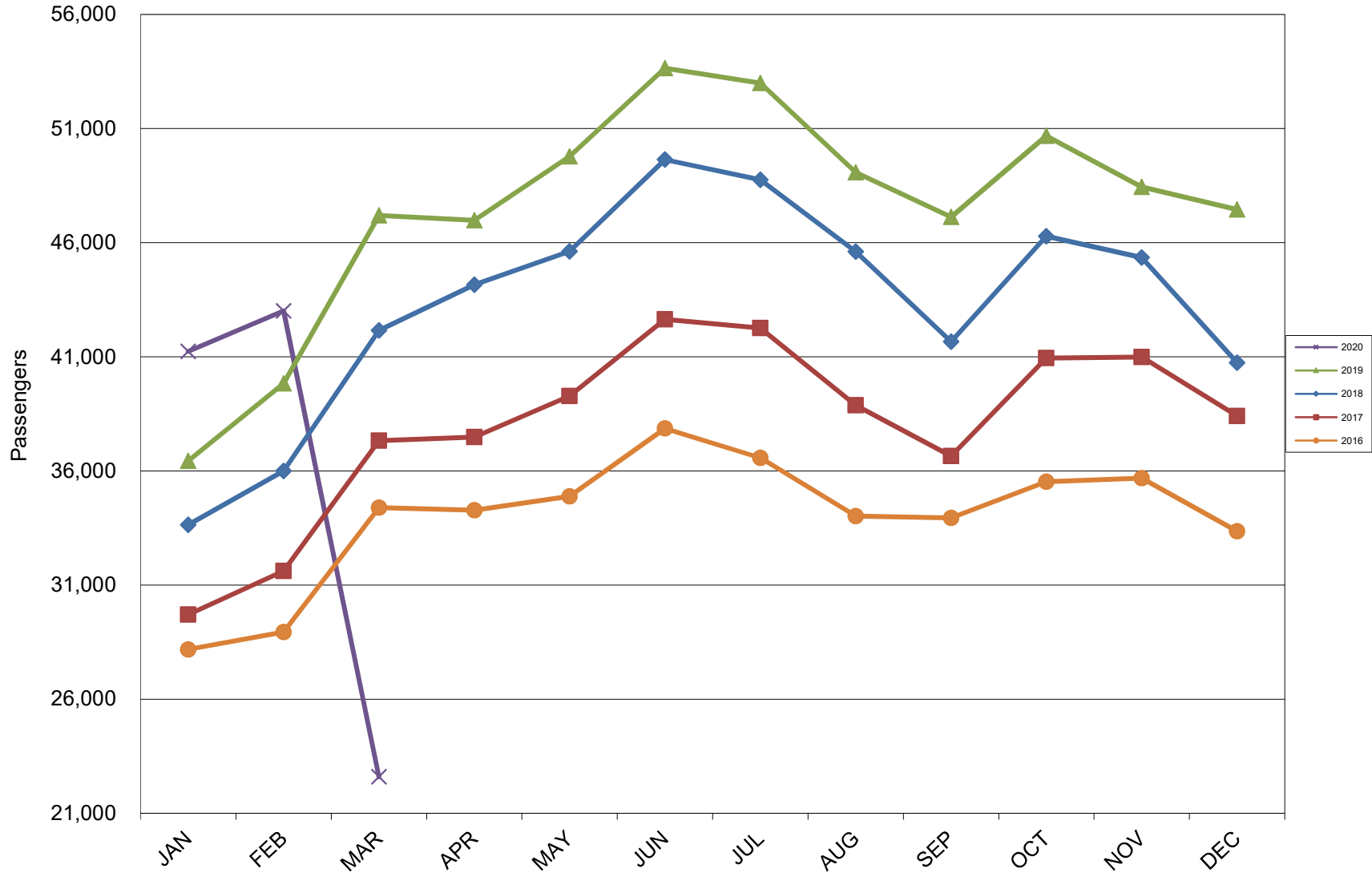
## 5 Year Trend



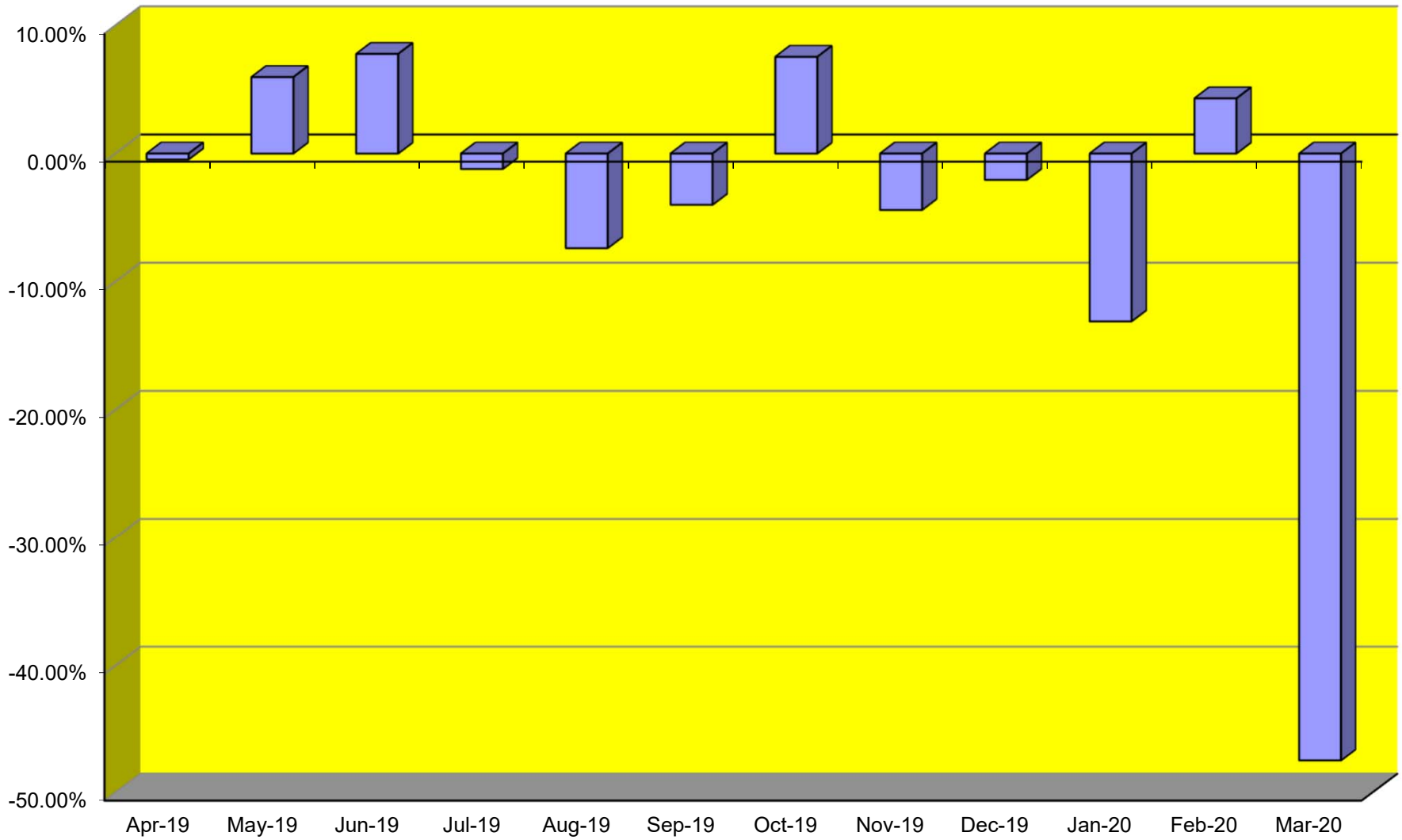
### TOTAL CARGO POUNDAGE - AUSTIN, TEXAS



Average Daily Passengers

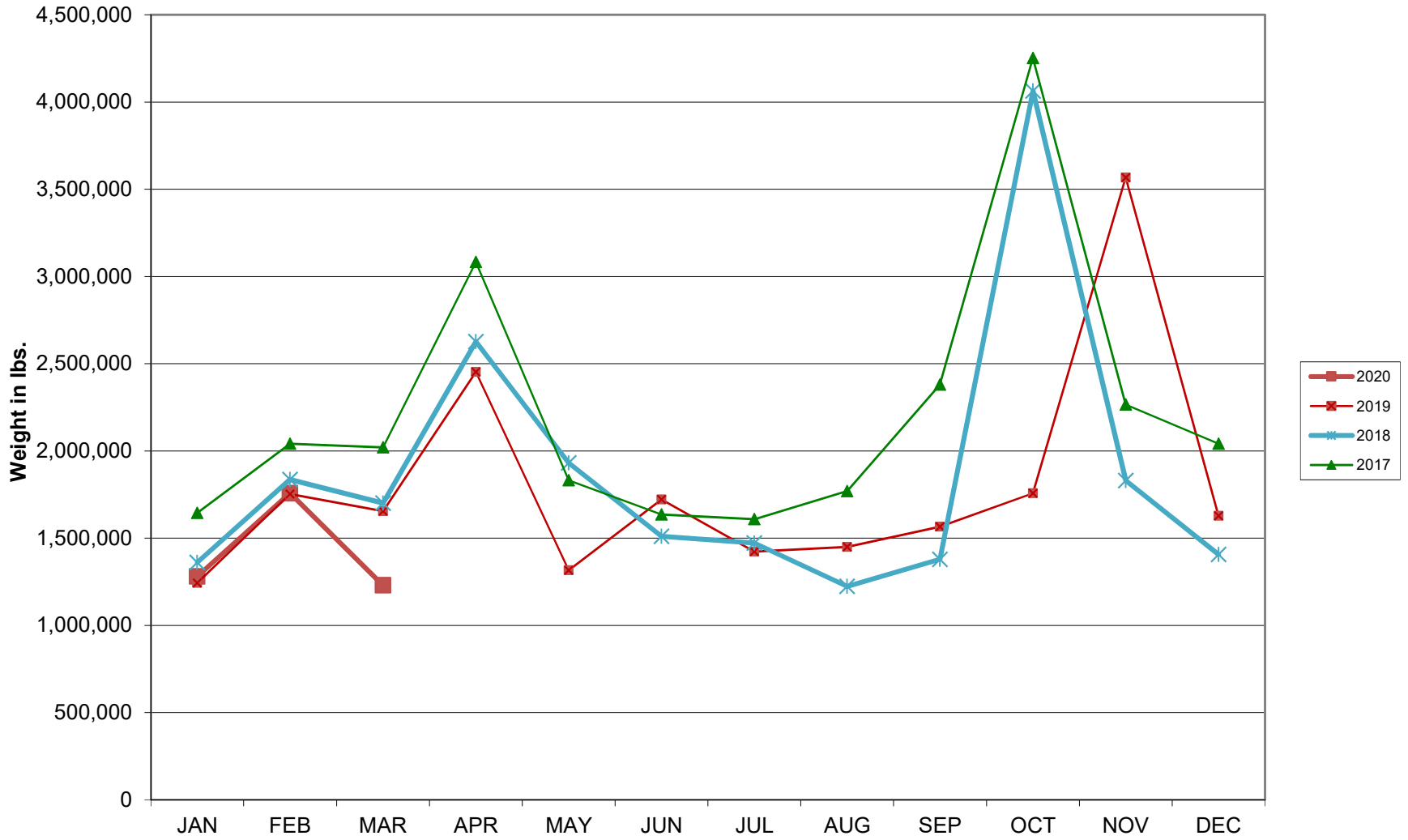


**Monthly % Change in Average Daily Passengers**

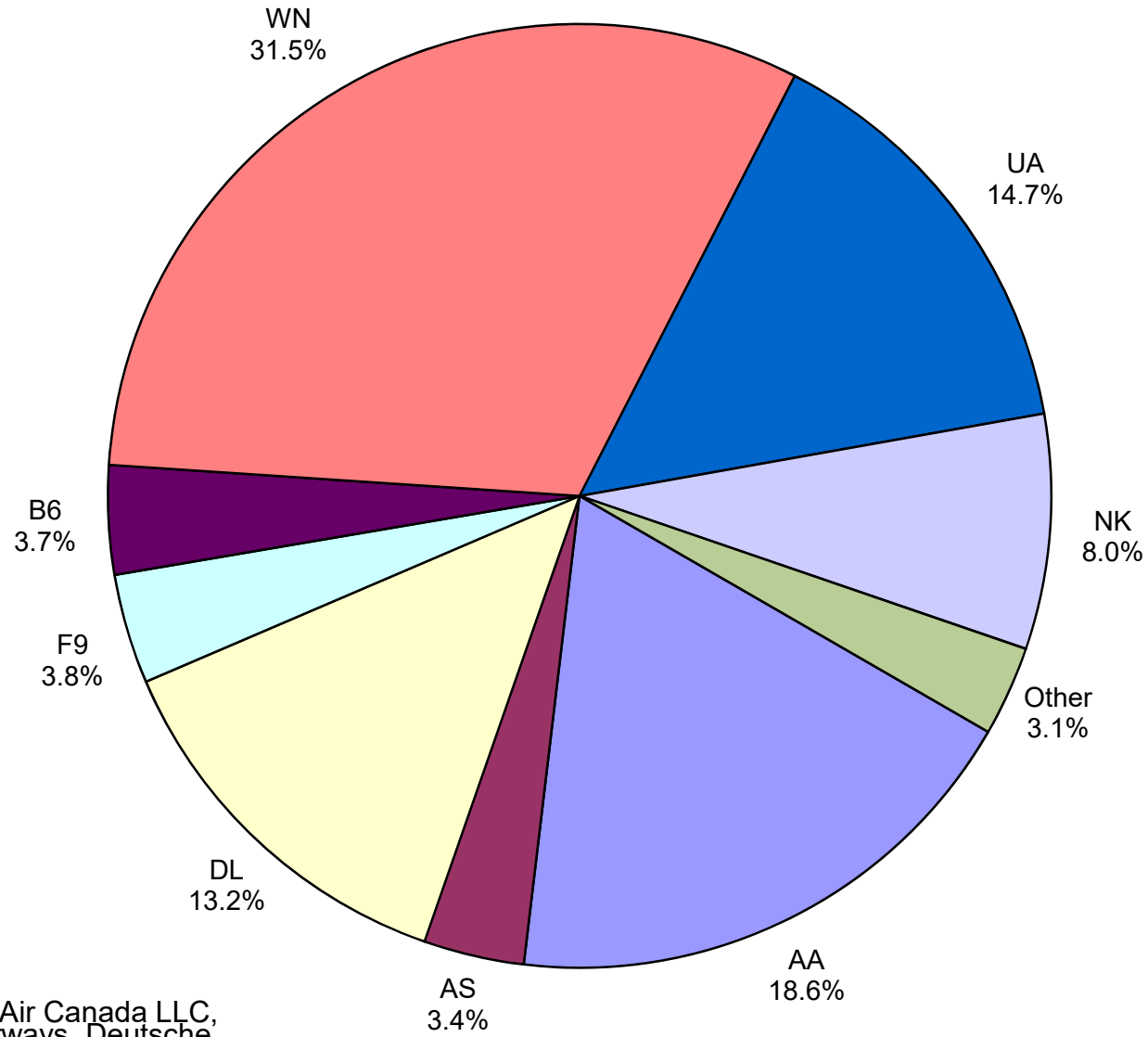




# HISTORY OF INTERNATIONAL AIR CARGO



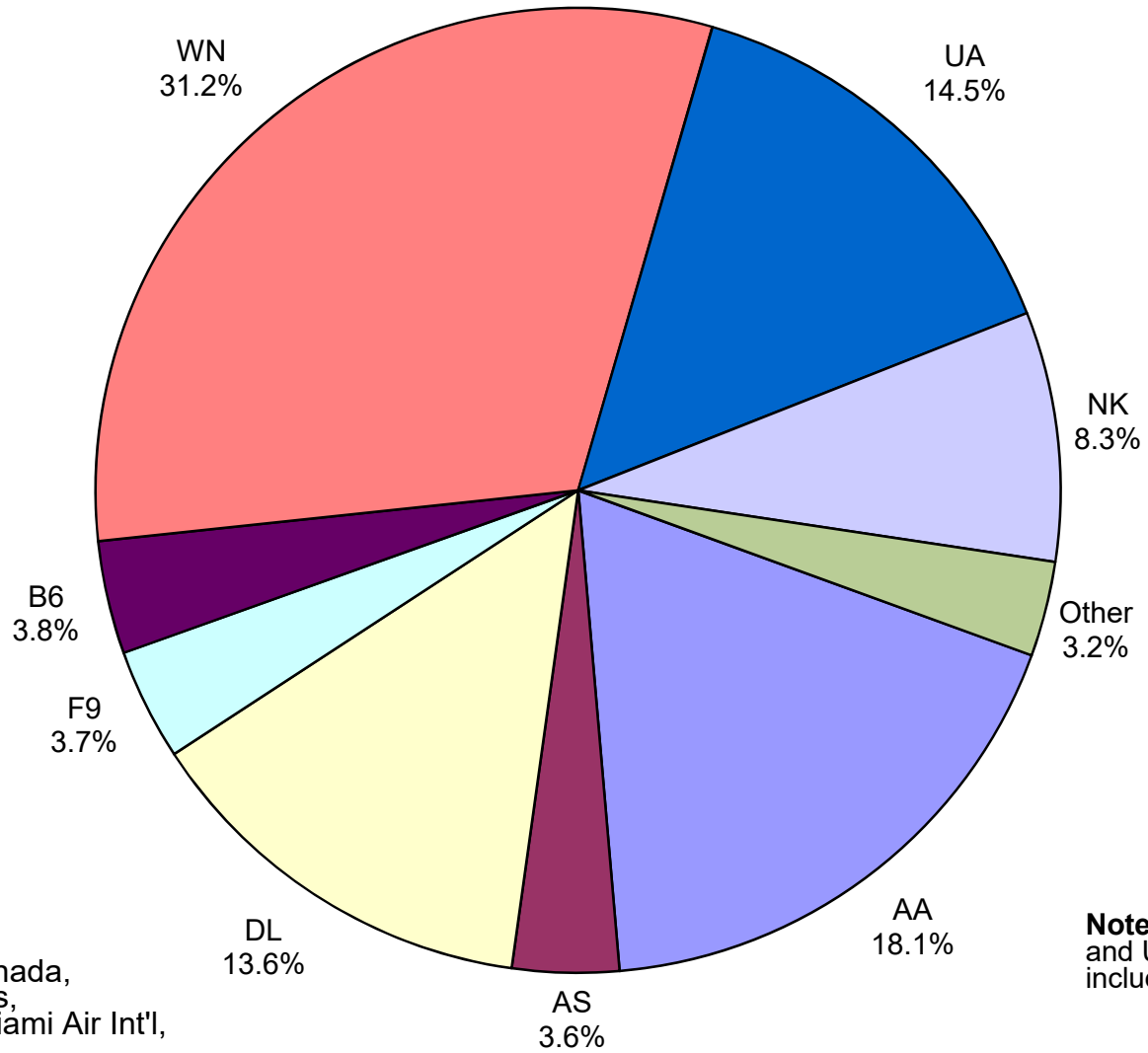
**Total Passengers  
March 2020**



**Other:** Aeromexico, Air Canada LLC, Allegiant Air, British Airways, Deutsche Lufthansa AG, Miami Air, Int'l., Norwegian Air, UK, Ltd., Sun Country and VivaAerobus

**Note:** American, Delta and United Airlines percentages include Affiliates.

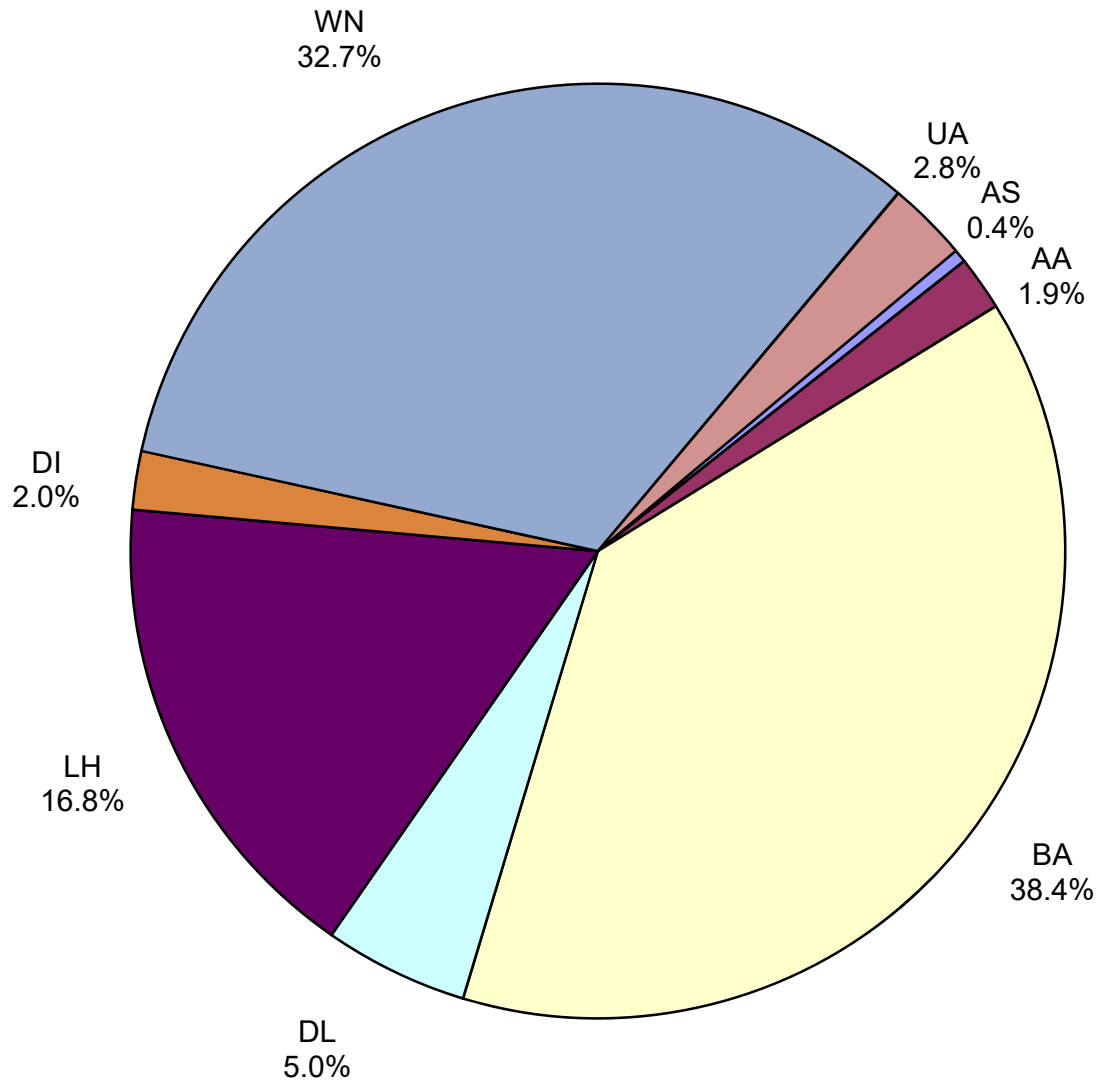
**All Passenger Carriers  
Enplaned Revenue Passengers  
March 2020**



**Other:** Aeromexico, Air Canada, Allegiant Air, British Airways, Deutsche Lufthansa AG, Miami Air Int'l, Norwegian Air UK, Ltd. and Sun Country/MN Airlines, LLC.

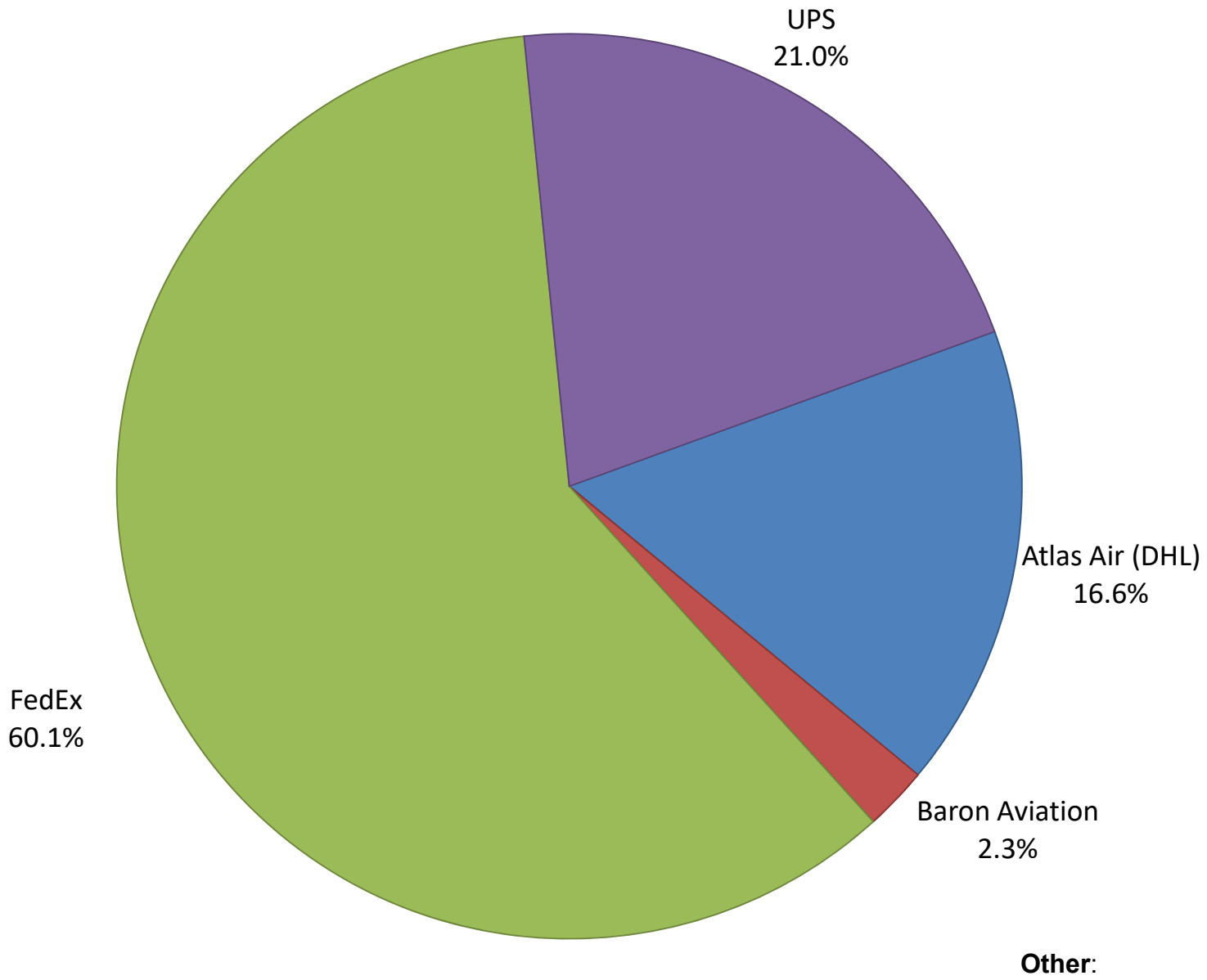
**Note:** American/US Airways, Delta and United Airlines percentages include Affiliates.

# AUS Belly Freight Market Shares March 2020

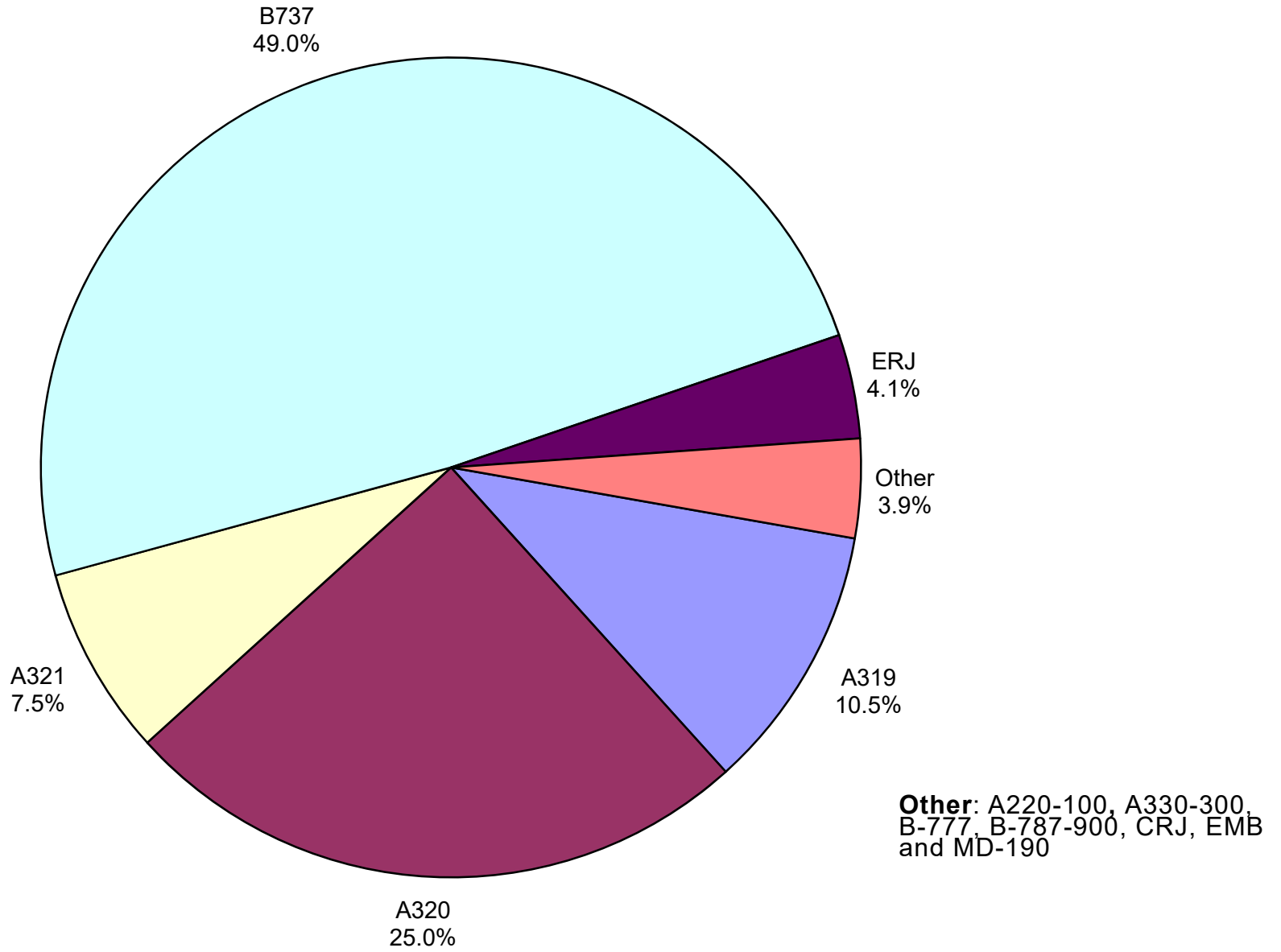


Other =

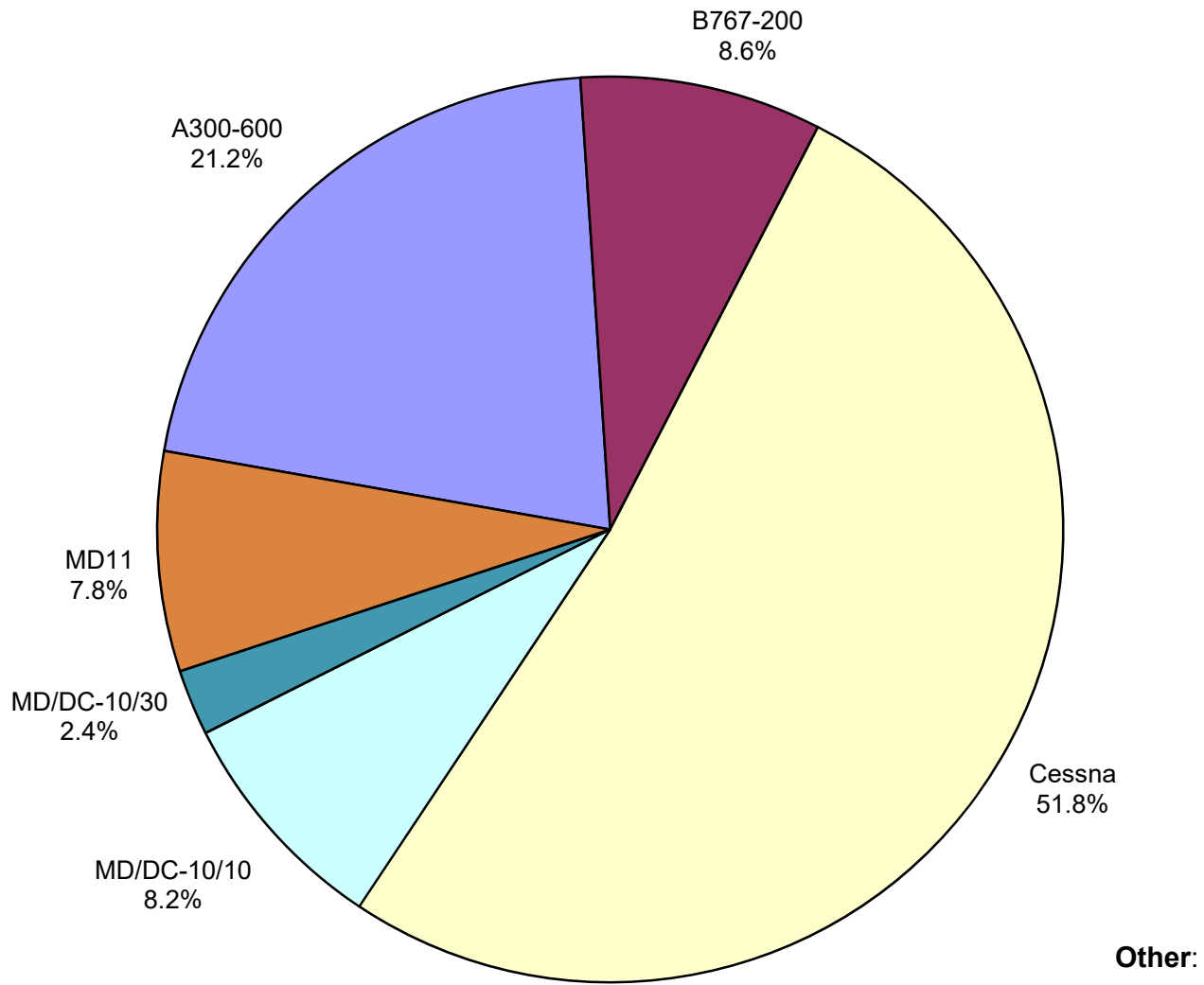
# Air Cargo Market Share March 2020



**AUS Scheduled Passenger Aircraft Fleet Mix  
March 2020**



**AUS Scheduled Cargo Aircraft Fleet Mix  
March 2020**



# Austin-Bergstrom International Airport

## Pax Detail Report - March, 2020

Company	Period				YTD				2020 Share	2019 Share	Share Diff
	3/2020	3/2019	Difference	Change	YTD 2020	YTD 2019	Difference	Change			
Aerovias de Mexico S.A. de C.V.	2,319	3,097	-778	-25.1	9,915	8,600	1,315	15.3	0.3	0.2	0.1
Air Canada	1,995	5,381	-3,386	-62.9	10,317	14,171	-3,854	-27.2	0.3	0.4	-0.1
Alaska Airlines INC	24,156	51,008	-26,852	-52.6	117,280	134,558	-17,278	-12.8	3.6	3.6	0.0
Allegiant Air LLC	6,844	20,751	-13,907	-67.0	18,475	40,609	-22,134	-54.5	0.6	1.1	-0.5
American Airlines INC	130,012	271,837	-141,825	-52.2	612,411	733,244	-120,833	-16.5	19.0	19.8	-0.8
British Airways PLC	5,145	15,707	-10,562	-67.2	29,217	38,531	-9,314	-24.2	0.9	1.0	-0.1
Concesionaria Vuela Compañía de Aviación, S.A.P.I. de C.V.	0	0	0	0.0	0	434	-434	-100.0	0.0	0.0	0.0
Delta Air Lines	92,648	198,508	-105,860	-53.3	462,967	488,523	-25,556	-5.2	14.3	13.2	1.1
Deutsche Lufthansa AG	2,246	259	1,987	767.2	15,883	259	15,624	6,032.4	0.5	0.0	0.5
Frontier Airlines INC	26,343	44,465	-18,122	-40.8	114,823	130,386	-15,563	-11.9	3.6	3.5	0.1
JetBlue Airways Corporation	26,139	51,163	-25,024	-48.9	119,897	132,770	-12,873	-9.7	3.7	3.6	0.1
Miami Air International INC	121	652	-531	-81.4	121	776	-655	-84.4	0.0	0.0	0.0
Norwegian Air UK LTD	2,327	7,656	-5,329	-69.6	3,474	7,656	-4,182	-54.6	0.1	0.2	-0.1
Scandinavian Airlines	0	423	-423	-100.0	0	423	-423	-100.0	0.0	0.0	0.0
Southwest Airlines	220,640	496,419	-275,779	-55.6	1,032,730	1,319,593	-286,863	-21.7	32.0	35.6	-3.6
Spirit Airlines Inc	56,414	69,937	-13,523	-19.3	206,322	97,333	108,989	112.0	6.4	2.6	3.8
Sun Country Airlines/MN Airlines LLC	372	334	38	11.4	643	1,524	-881	-57.8	0.0	0.0	0.0
Swift Air LLC	0	531	-531	-100.0	928	993	-65	-6.5	0.0	0.0	0.0
United Airlines INC	102,737	223,699	-120,962	-54.1	470,997	555,633	-84,636	-15.2	14.6	15.0	-0.4
VIA Airlines, INC	0	1,189	-1,189	-100.0	0	1,933	-1,933	-100.0	0.0	0.1	-0.1
VivaAerobus	197	0	197	0.0	197	0	197	0.0	0.0	0.0	0.0
<b>Report Totals</b>	<b>700,655</b>	<b>1,463,016</b>	<b>-762,361</b>	<b>-52.1%</b>	<b>3,226,597</b>	<b>3,707,949</b>	<b>-481,352</b>	<b>-13.0%</b>	<b>99.9%</b>	<b>99.9%</b>	

### Statistics Included in Report

Domestic Passengers: Enplaned Revenue, Deplaned Revenue, Enplaned Non-Revenue, Deplaned Non-Revenue  
 International Passengers: Enplaned Revenue, Deplaned Revenue, Enplaned Non-Revenue, Deplaned Non-Revenue  
 International Pre-Cleared Passengers: Enplaned Revenue, Deplaned Revenue, Enplaned Non-Revenue, Deplaned Non-Revenue  
 South Terminal Domestic Passengers: Enplaned Revenue, Deplaned Revenue, Enplaned Non-Revenue, Deplaned Non-Revenue



# Austin-Bergstrom International Airport

## Summary Landings Report

**Landing Type: Total**

Month	2020		2019		2018		% Change 2020- 2019		% Change 2019- 2018	
	Count	Weight	Count	Weight	Count	Weight	Count	Weight	Count	Weight
January	5,762	812,175,948	5,348	733,746,679	5,086	688,923,110	7.98%	10.62%	4.78%	4.93%
February	5,382	764,833,023	5,040	692,708,930	4,706	637,500,756	8.41%	10.66%	7.66%	9.36%
March	5,278	742,099,772	5,964	825,483,911	5,643	760,648,260	-11.21%	-9.39%	5.38%	6.89%
April	0	0	5,899	815,621,798	5,797	793,367,736	-100.00%	-100.00%	-0.34%	0.56%
May	0	0	6,294	881,747,150	6,117	831,431,763	-100.00%	-100.00%	-1.13%	0.20%
June	0	0	6,322	890,410,020	6,211	852,438,818	-100.00%	-100.00%	-2.30%	-1.73%
July	0	0	6,551	915,103,306	6,346	869,502,671	-100.00%	-100.00%	-0.12%	0.54%
August	0	0	6,447	906,499,773	6,245	861,046,997	-100.00%	-100.00%	-0.96%	-0.55%
September	0	0	6,020	848,899,951	5,737	790,731,351	-100.00%	-100.00%	1.37%	2.73%
October	0	0	6,459	916,700,076	6,078	846,310,860	-100.00%	-100.00%	1.67%	2.68%
November	0	0	5,924	836,527,780	5,684	780,994,101	-100.00%	-100.00%	3.81%	4.20%
December	0	0	6,078	848,973,148	5,600	761,317,385	-100.00%	-100.00%	11.36%	13.06%
<b>Totals For Selected Period</b>	16,422	2,319,108,743	16,352	2,251,939,520	15,435	2,087,072,126	0.43%	2.98%	5.94%	7.90%
<b>Yearly Totals</b>	16,422	2,319,108,743	72,346	10,112,422,522	69,250	9,474,213,808	-77.30%	-77.07%	4.47%	6.74%