

**Austin-Bergstrom International Airport
Aviation Activity Report
Calendar Year 2019 vs 2018**

Combined Terminals

	1/2019	1/2018	Percent Change	1/2019 - 1/2019	1/2018 - 1/2018	Percent Change
ABIA						
Total Passenger Activity						
Domestic Enplaned Revenue	503,462	476,037	5.76	503,462	476,037	5.76
Domestic Deplaned Revenue	519,901	494,185	5.20	519,901	494,185	5.20
International Enplaned Revenue	9,218	10,100	-8.73	9,218	10,100	-8.73
International Deplaned Revenue	11,033	11,818	-6.64	11,033	11,818	-6.64
Domestic Enplaned Non-Revenue	13,517	13,098	3.20	13,517	13,098	3.20
Domestic Deplaned Non-Revenue	13,077	12,326	6.09	13,077	12,326	6.09
International Enplaned Non-Revenue	77	97	-20.62	77	97	-20.62
International Deplaned Non-Revenue	77	50	54.00	77	50	54.00
Intl Enplaned Pre-Cleared Revenue	2,005	1,491	34.47	2,005	1,491	34.47
Intl Deplaned Pre-Cleared Revenue	2,215	1,680	31.85	2,215	1,680	31.85
Intl Enplaned Pre-Cleared Non-Revenue	26	26	0.00	26	26	0.00
Intl Deplaned Pre-Cleared Non-Revenue	29	19	52.63	29	19	52.63
South Terminal Domestic Enplaned Revenue	26,833	10,532	154.78	26,833	10,532	154.78
South Terminal Domestic Deplaned Revenue	27,791	11,362	144.60	27,791	11,362	144.60
South Terminal Domestic Enplaned Non-Revenue	106	6	1,666.67	106	6	1,666.67
South Terminal Domestic Deplaned Non-Revenue	115	7	1,542.86	115	7	1,542.86
ABIA Passenger Totals	1,129,482	1,042,834	8.31	1,129,482	1,042,834	8.31
<i>ABIA Enplaned Passenger Totals</i>	<i>555,244</i>	<i>511,387</i>	<i>8.58</i>	<i>555,244</i>	<i>511,387</i>	<i>8.58</i>
<i>ABIA Deplaned Passenger Totals</i>	<i>574,238</i>	<i>531,447</i>	<i>8.05</i>	<i>574,238</i>	<i>531,447</i>	<i>8.05</i>
<i>ABIA Domestic Passenger Totals</i>	<i>1,104,802</i>	<i>1,017,553</i>	<i>8.57</i>	<i>1,104,802</i>	<i>1,017,553</i>	<i>8.57</i>
<i>ABIA International Passenger Totals</i>	<i>24,680</i>	<i>25,281</i>	<i>-2.38</i>	<i>24,680</i>	<i>25,281</i>	<i>-2.38</i>

CURRENT PASSENGER RECORD = 1,511,634 RECORD SET = JULY 2018

Total Aircraft Operations

Air Carrier	10,469	9,847	6.32	10,469	9,847	6.32
Commuter & Air Taxi	1,288	1,290	-0.16	1,288	1,290	-0.16
Military	877	694	26.37	877	694	26.37
General Aviation						
Itinerant	3,675	3,657	0.49	3,675	3,657	0.49
Local	66	61	8.20	66	61	8.20
Total G.A.	3,741	3,718	0.62	3,741	3,718	0.62
Total Operations	16,375	15,549	5.31	16,375	15,549	5.31

**Austin-Bergstrom International Airport
Aviation Activity Report
Calendar Year 2019 vs 2018**

By Terminal

	1/2019	1/2018	Percent Change	1/2019 - 1/2019	1/2018 - 1/2018	Percent Change
<u>Barbara Jordan Terminal (BJT)</u>						
Passenger Activity						
Domestic Enplaned Revenue	503,462	476,037	5.76	503,462	476,037	5.76
Domestic Deplaned Revenue	519,901	494,185	5.20	519,901	494,185	5.20
International Enplaned Revenue	9,218	10,100	-8.73	9,218	10,100	-8.73
International Deplaned Revenue	11,033	11,818	-6.64	11,033	11,818	-6.64
Domestic Enplaned Non-Revenue	13,517	13,098	3.20	13,517	13,098	3.20
Domestic Deplaned Non-Revenue	13,077	12,326	6.09	13,077	12,326	6.09
International Enplaned Non-Revenue	77	97	-20.62	77	97	-20.62
International Deplaned Non-Revenue	77	50	54.00	77	50	54.00
Intl Enplaned Pre-Cleared Revenue	2,005	1,491	34.47	2,005	1,491	34.47
Intl Deplaned Pre-Cleared Revenue	2,215	1,680	31.85	2,215	1,680	31.85
Intl Enplaned Pre-Cleared Non-Revenue	26	26	0.00	26	26	0.00
Intl Deplaned Pre-Cleared Non-Revenue	29	19	52.63	29	19	52.63
Barbara Jordan Terminal Passenger Totals	1,074,637	1,020,927	5.26	1,074,637	1,020,927	5.26
<i>BJT Enplaned Passenger Totals</i>	<i>528,305</i>	<i>500,849</i>	<i>5.48</i>	<i>528,305</i>	<i>500,849</i>	<i>5.48</i>
<i>BJT Deplaned Passenger Totals</i>	<i>546,332</i>	<i>520,078</i>	<i>5.05</i>	<i>546,332</i>	<i>520,078</i>	<i>5.05</i>
<i>BJT Domestic Passenger Totals</i>	<i>1,049,957</i>	<i>995,646</i>	<i>5.45</i>	<i>1,049,957</i>	<i>995,646</i>	<i>5.45</i>
<i>BJT International Passenger Totals</i>	<i>24,680</i>	<i>25,281</i>	<i>-2.38</i>	<i>24,680</i>	<i>25,281</i>	<i>-2.38</i>
<u>South Terminal (ST)</u>						
Passenger Activity						
South Terminal Domestic Enplaned Revenue	26,833	10,532	154.78	26,833	10,532	154.78
South Terminal Domestic Deplaned Revenue	27,791	11,362	144.60	27,791	11,362	144.60
South Terminal Domestic Enplaned Non-Revenue	106	6	1666.67	106	6	1666.67
South Terminal Domestic Deplaned Non-Revenue	115	7	1542.86	115	7	1542.86
South Terminal Passenger Totals	54,845	21,907	150.35	54,845	21,907	150.35
<i>ST Enplaned Passenger Totals</i>	<i>26,939</i>	<i>10,538</i>	<i>155.64</i>	<i>26,939</i>	<i>10,538</i>	<i>155.64</i>
<i>ST Deplaned Passenger Totals</i>	<i>27,906</i>	<i>11,369</i>	<i>145.46</i>	<i>27,906</i>	<i>11,369</i>	<i>145.46</i>

**Austin-Bergstrom International Airport
Aviation Activity Report
Calendar Year 2019 vs 2018**

	1/2019	1/2018	Percent Change	1/2019 - 1/2019	1/2018 - 1/2018	Percent Change
<u>Total Cargo Activity</u>						
Mail						
Domestic Enplaned Mail	193,463	110,527	75.04	193,463	110,527	75.04
Domestic Deplaned Mail	652,871	412,719	58.19	652,871	412,719	58.19
International Enplaned Mail	0	0	0.00	0	0	0.00
International Deplaned Mail	110,830	0	0.00	110,830	0	0.00
South Terminal-Domestic Enplaned Mail	0	0	0.00	0	0	0.00
South Terminal-Domestic Deplaned Mail	0	0	0.00	0	0	0.00
Mail Totals	957,164	523,246	82.93	957,164	523,246	82.93
Cargo						
Domestic Enplaned Cargo	4,822,520	4,673,090	3.20	4,822,520	4,673,090	3.20
Domestic Deplaned Cargo	7,037,778	6,895,128	2.07	7,037,778	6,895,128	2.07
International Enplaned Cargo	206,666	499,022	-58.59	206,666	499,022	-58.59
International Deplaned Cargo	103,780	154,191	-32.69	103,780	154,191	-32.69
South Terminal-Domestic Enplaned Cargo	0	0	0.00	0	0	0.00
South Terminal-Domestic Deplaned Cargo	0	0	0.00	0	0	0.00
Cargo Totals	12,170,744	12,221,431	-0.41	12,170,744	12,221,431	-0.41
Belly Freight						
Domestic Enplaned Belly Freight	294,239	299,856	-1.87	294,239	299,856	-1.87
Domestic Deplaned Belly Freight	480,129	387,709	23.84	480,129	387,709	23.84
International Enplaned Belly Freight	224,105	223,412	0.31	224,105	223,412	0.31
International Deplaned Belly Freight	598,473	483,758	23.71	598,473	483,758	23.71
South Terminal-Domestic Enplaned Belly Frght	0	0	0.00	0	0	0.00
South Terminal-Domestic Deplaned Belly Frght	0	0	0.00	0	0	0.00
Belly Freight Totals	1,596,946	1,394,735	14.50	1,596,946	1,394,735	14.50
Cargo Totals (Mail, Cargo, Belly Freight)	14,724,854	14,139,412	4.14	14,724,854	14,139,412	4.14
<i>Enplaned Cargo Totals</i>	<i>5,740,993</i>	<i>5,805,907</i>	<i>-1.12</i>	<i>5,740,993</i>	<i>5,805,907</i>	<i>-1.12</i>
<i>Deplaned Cargo Totals</i>	<i>8,983,861</i>	<i>8,333,505</i>	<i>7.80</i>	<i>8,983,861</i>	<i>8,333,505</i>	<i>7.80</i>
<i>Domestic Cargo Totals</i>	<i>13,481,000</i>	<i>12,779,029</i>	<i>5.49</i>	<i>13,481,000</i>	<i>12,779,029</i>	<i>5.49</i>
<i>International Cargo Totals</i>	<i>1,243,854</i>	<i>1,360,383</i>	<i>-8.57</i>	<i>1,243,854</i>	<i>1,360,383</i>	<i>-8.57</i>

CURRENT CARGO RECORD = 40,215,518

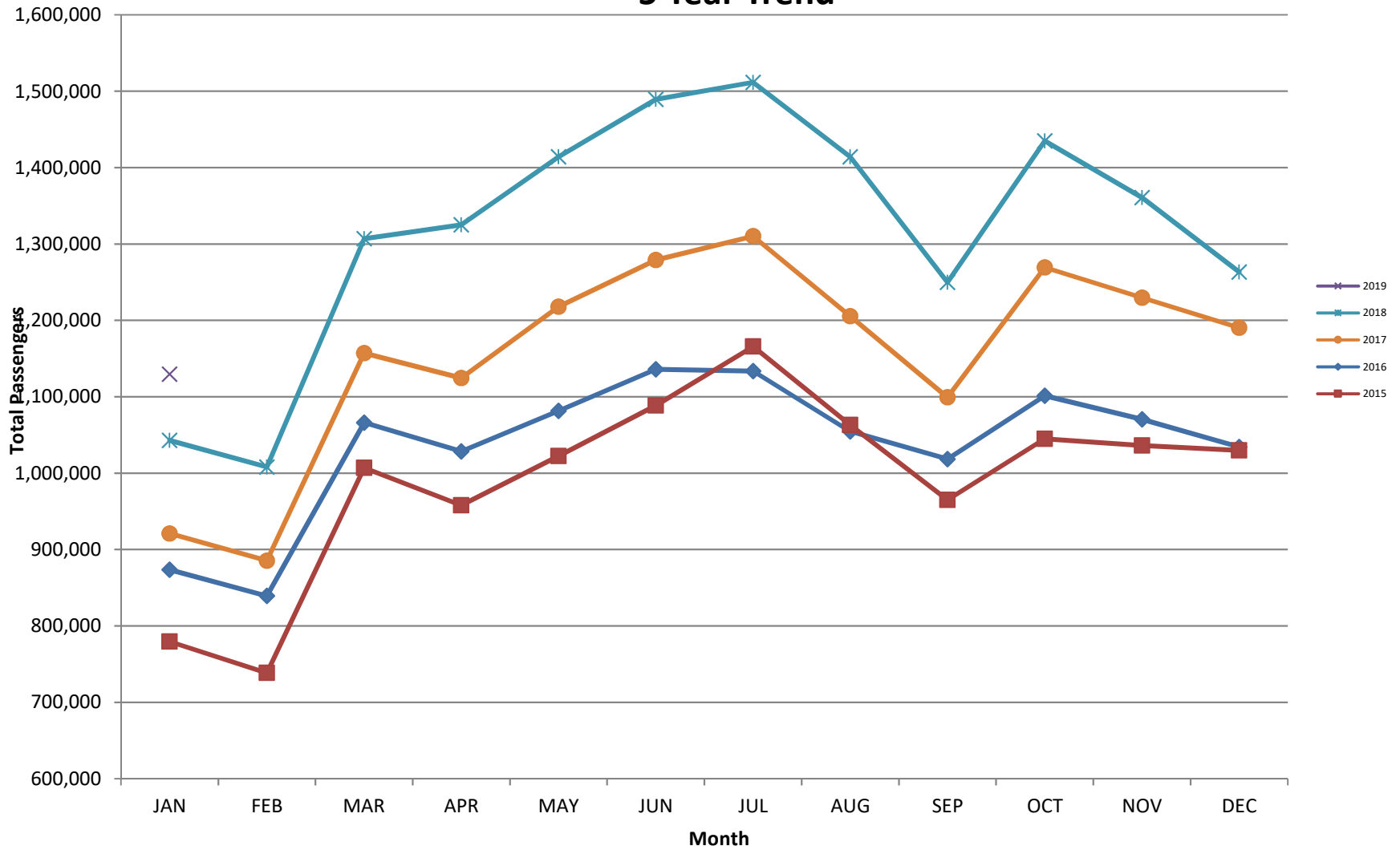
RECORD SET = MARCH 2001

AUS – Airline Codes
January 2019

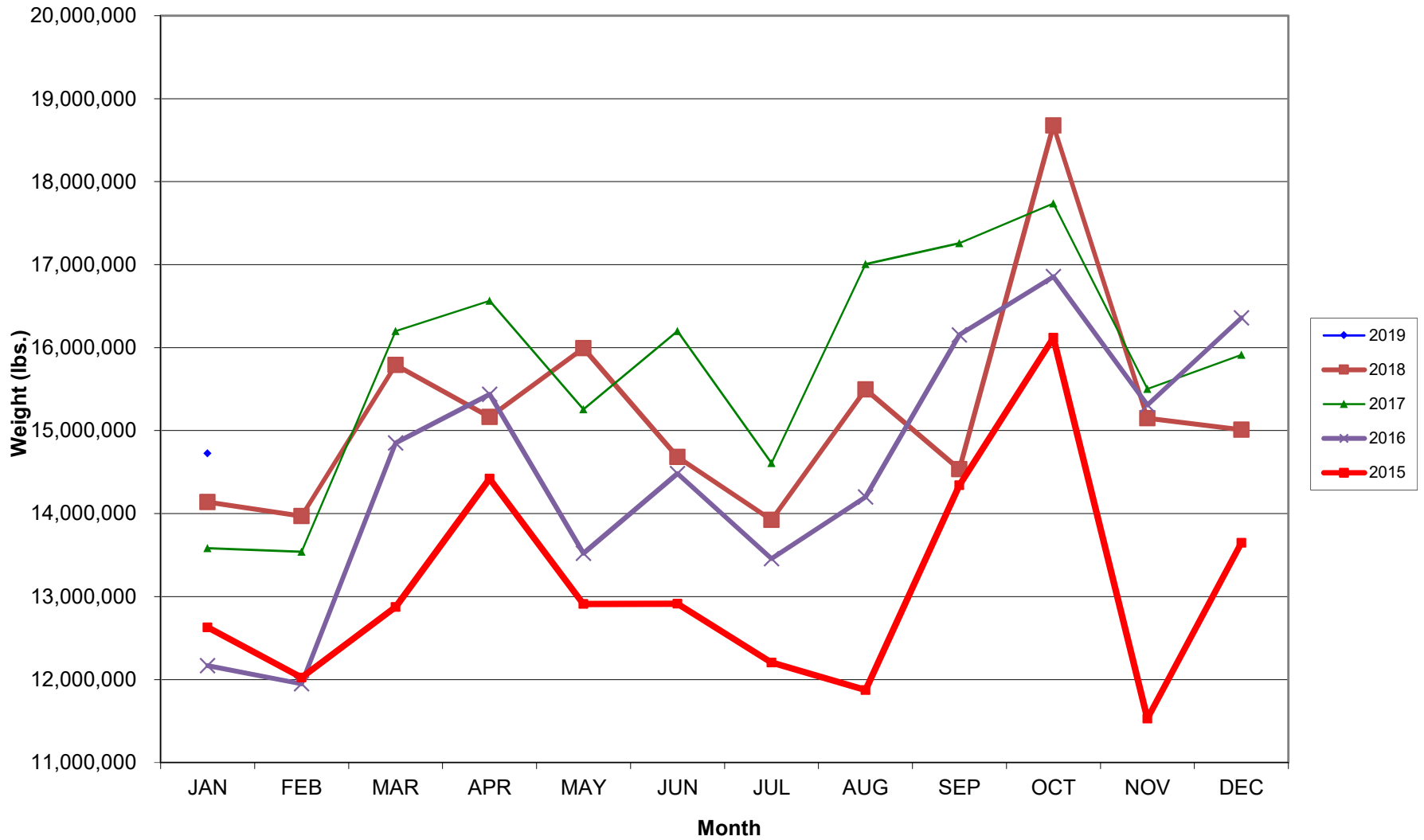
<u>Code</u>	<u>Carrier</u>
AM	Aerovias de Mexico S.A. de C.V. dba AeroMexico Airlines
AC	Air Canada
AS	Alaska Airlines, Inc. (Includes Virgin America. Merger effective 2/1/2018)
G4	Allegiant Air, LLC
AA	American Airlines, Inc.
BA	British Airways Plc
Y4	Concesionaria Vuela Compañía de Aviación, S.A.P.I. de C.V dba Volaris
DL	Delta Airlines
F9	Frontier Airlines
B6	JetBlue Airways Corp.
WN	Southwest Airlines
SY	Sun Country Airlines
WQ	Swift Air
UA	United Airlines, Inc.
VC	VIA Airlines

AUSTIN PASSENGER TRAFFIC

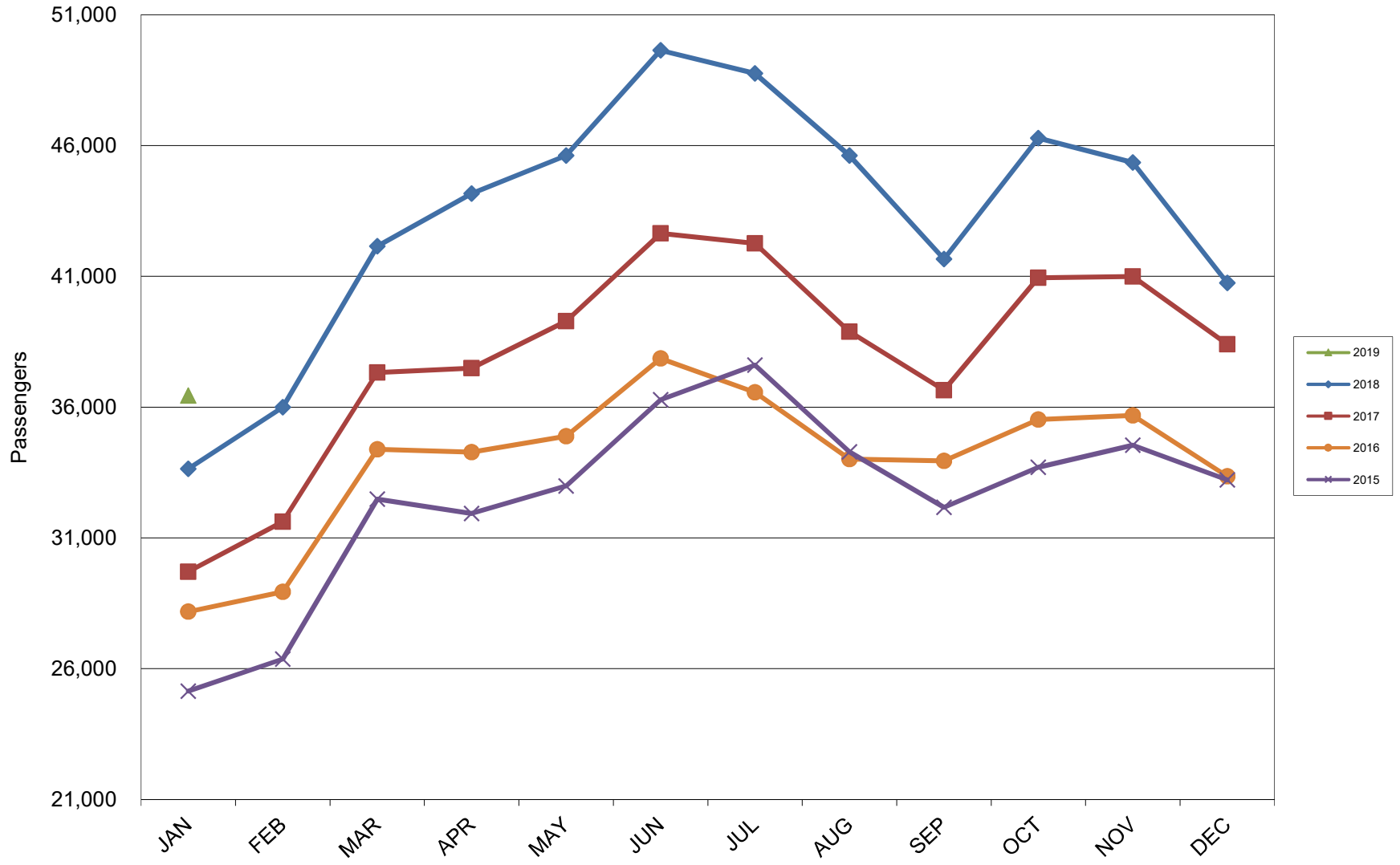
5 Year Trend



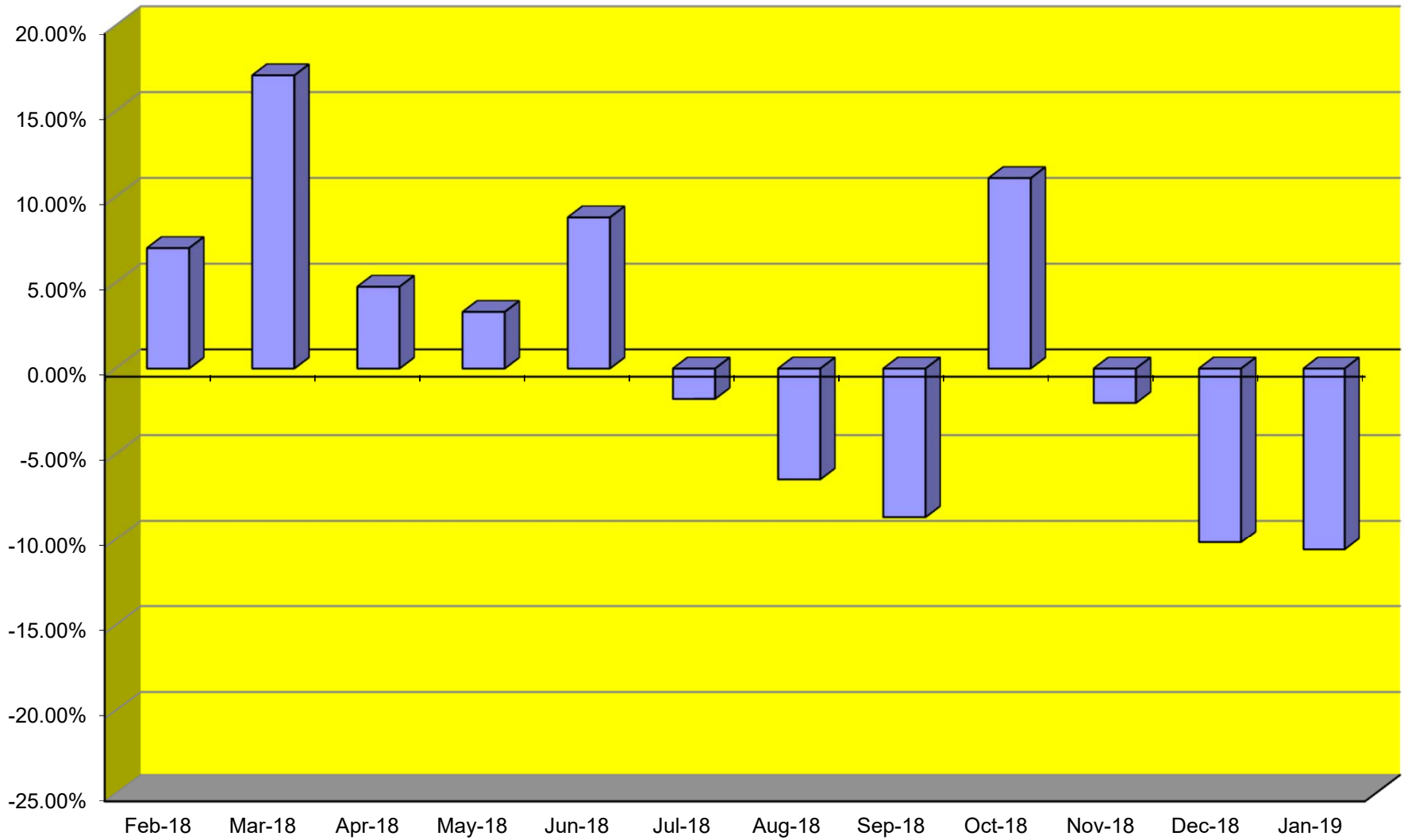
TOTAL CARGO POUNDAGE - AUSTIN, TEXAS



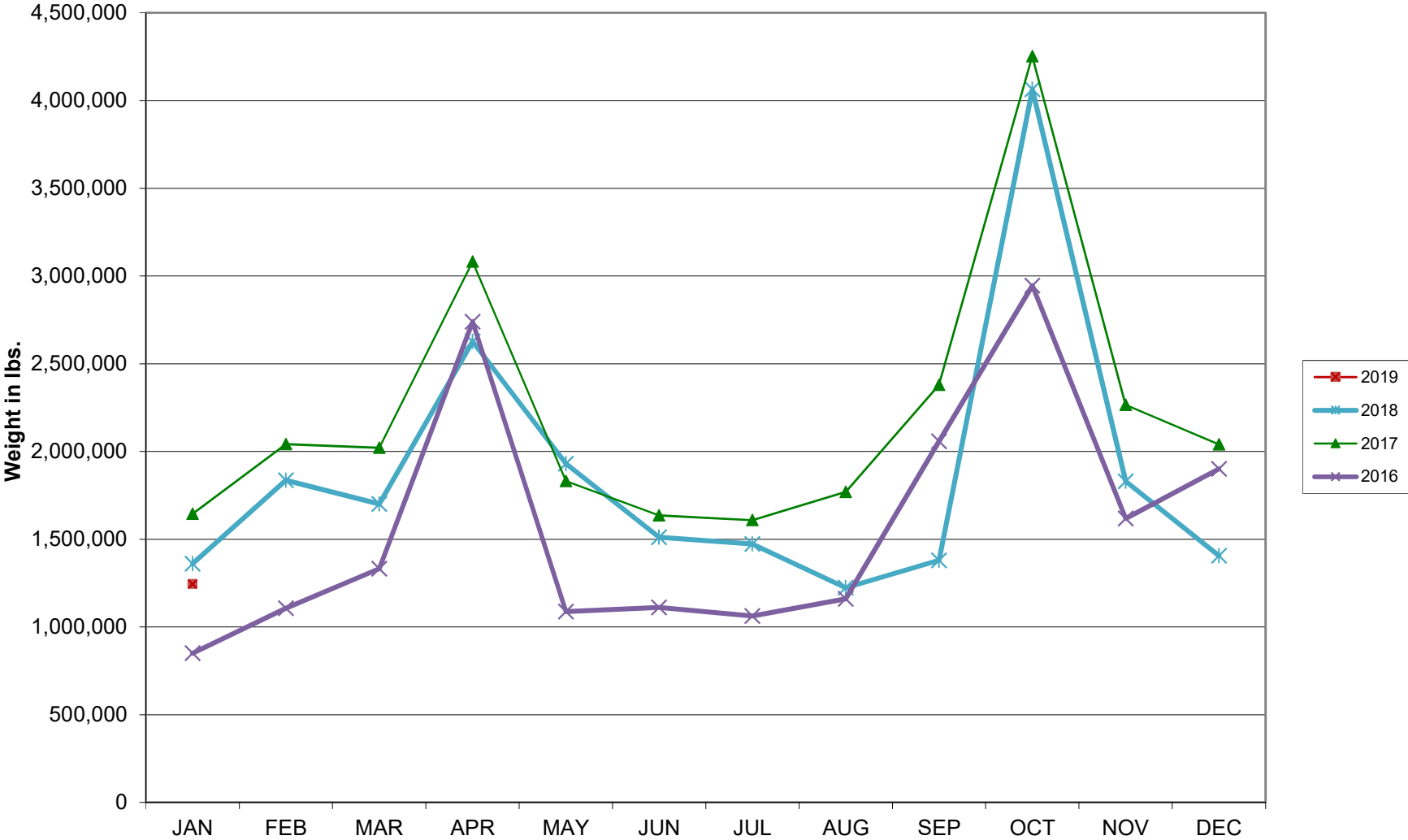
Average Daily Passengers



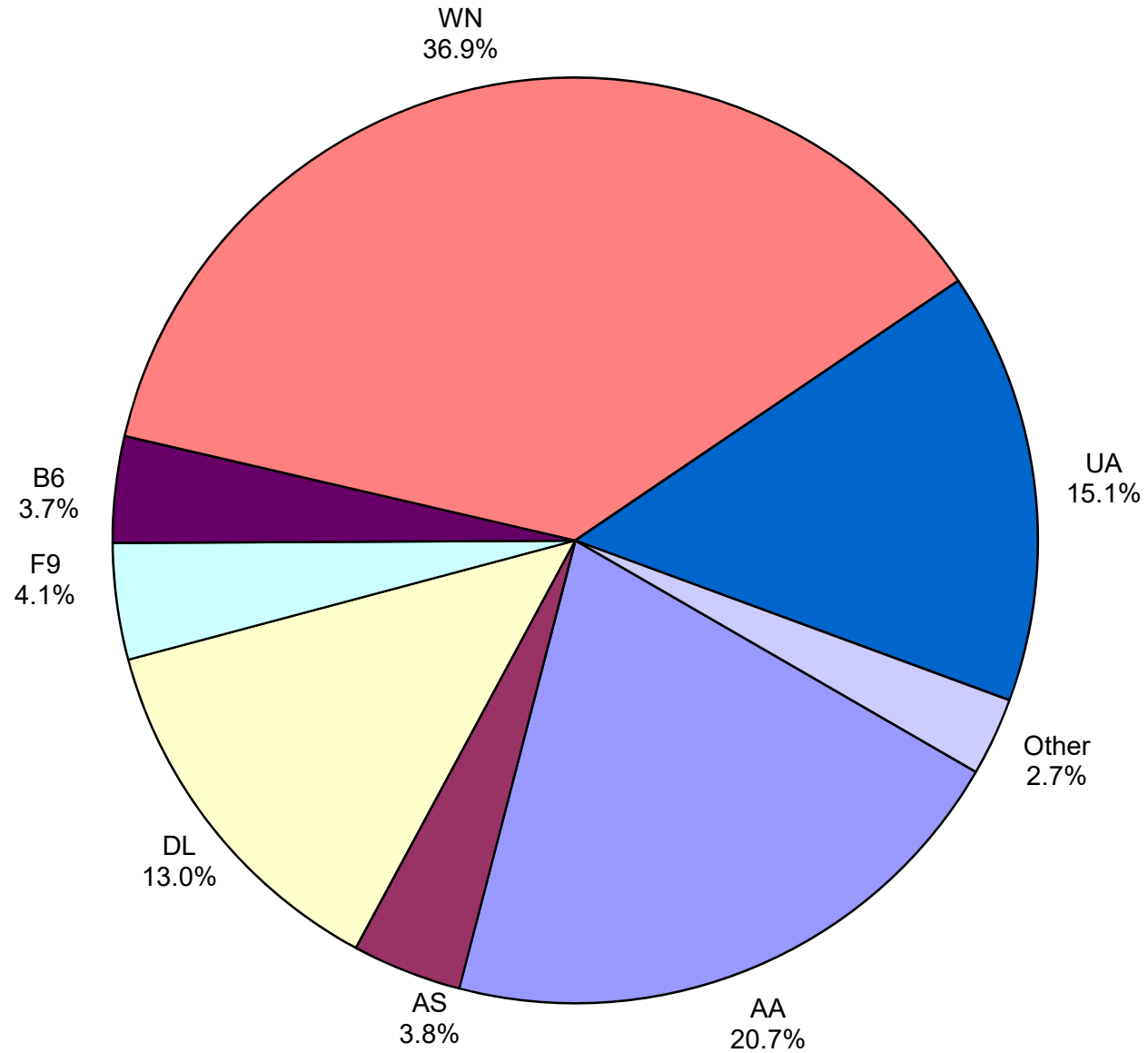
Monthly % Change in Average Daily Passengers



HISTORY OF INTERNATIONAL AIR CARGO



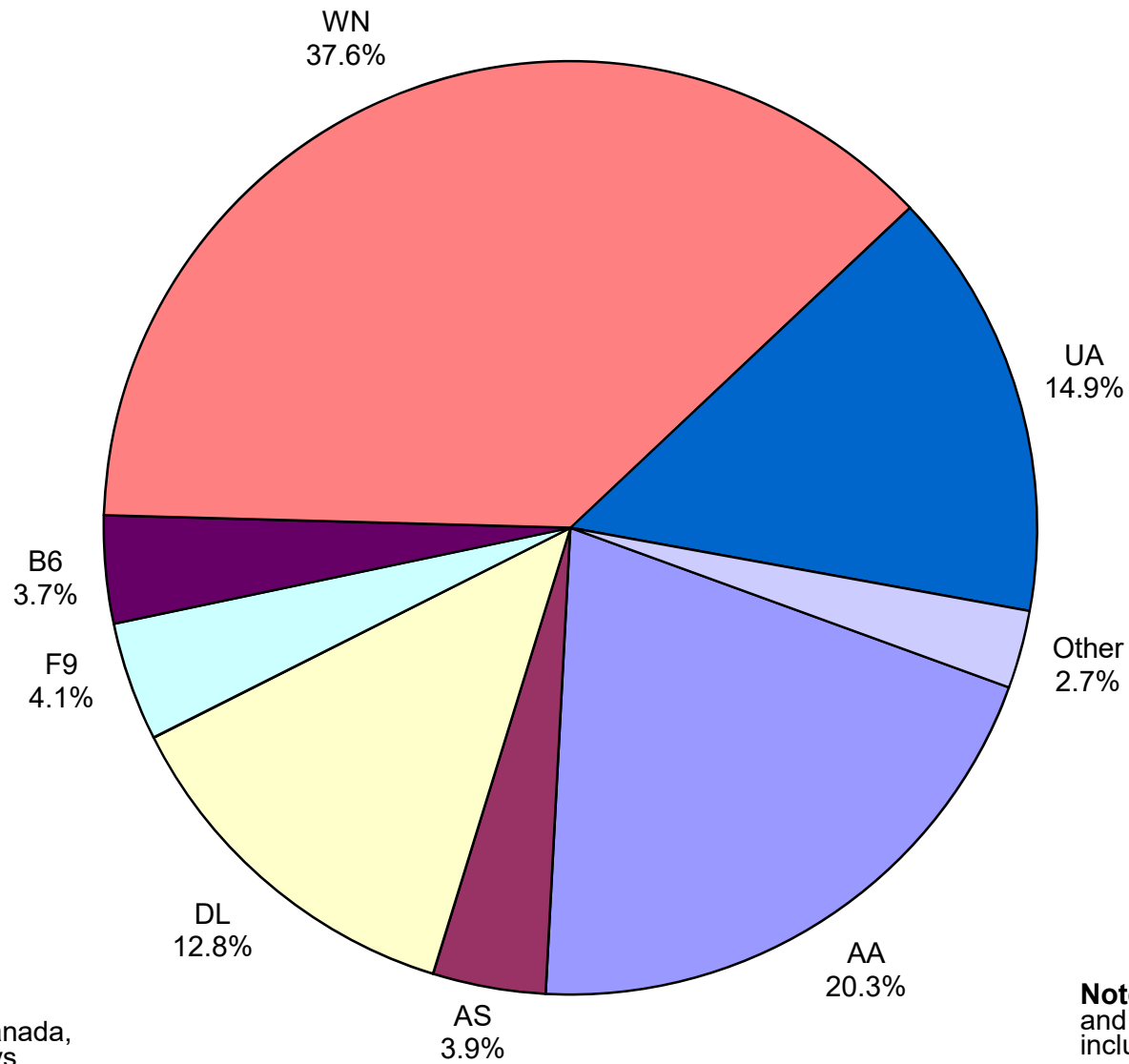
Total Passengers January 2019



Other: Aeromexico, Air Canada LLC, Allegiant Air, British Airways, Sun Country, Swift Air, VIA Airlines and Concesionaria Vuela dba Volaris

Note: American, Delta and United Airlines percentages include Affiliates.

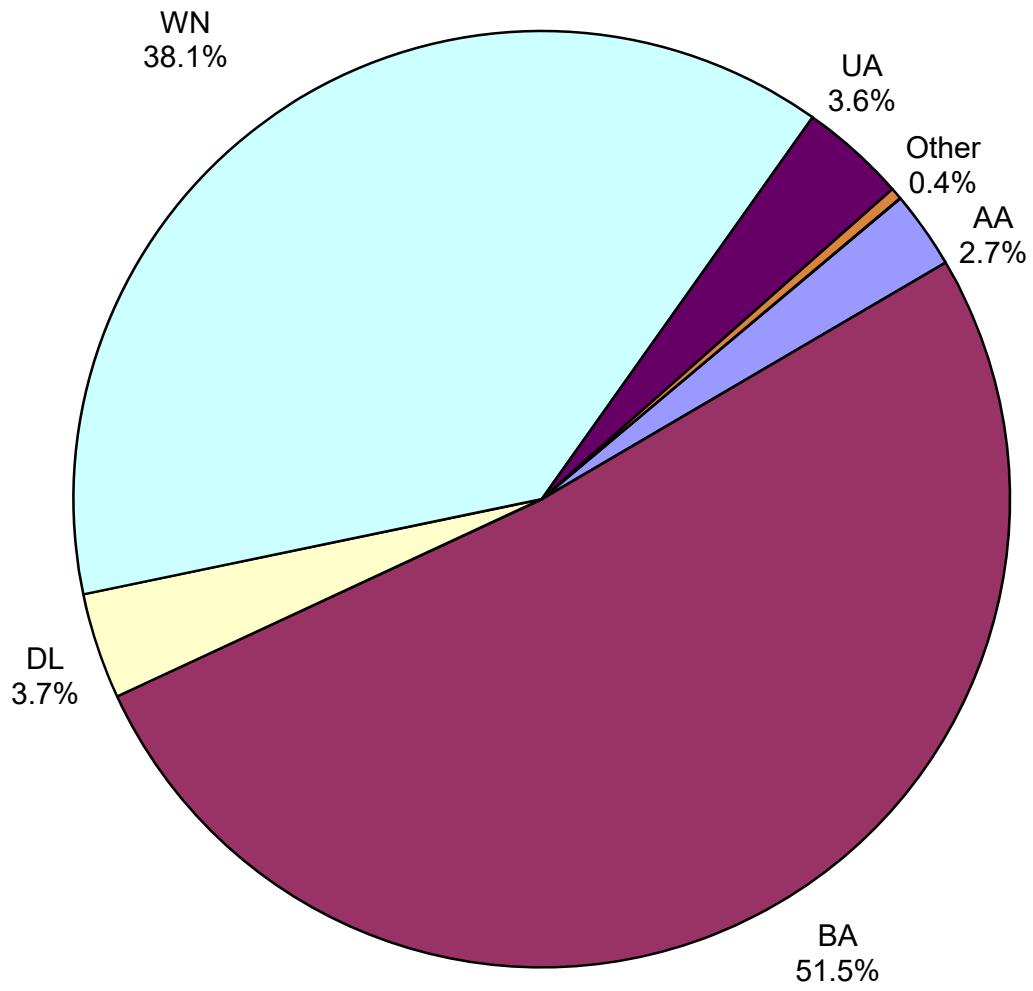
**All Passenger Carriers
Enplaned Revenue Passengers
January 2019**



Other: Aeromexico, Air Canada, Allegiant Air, British Airways, Sun Country Airlines, Swift Air, Concesionaria Vuela dba Volaris and VIA Airlines

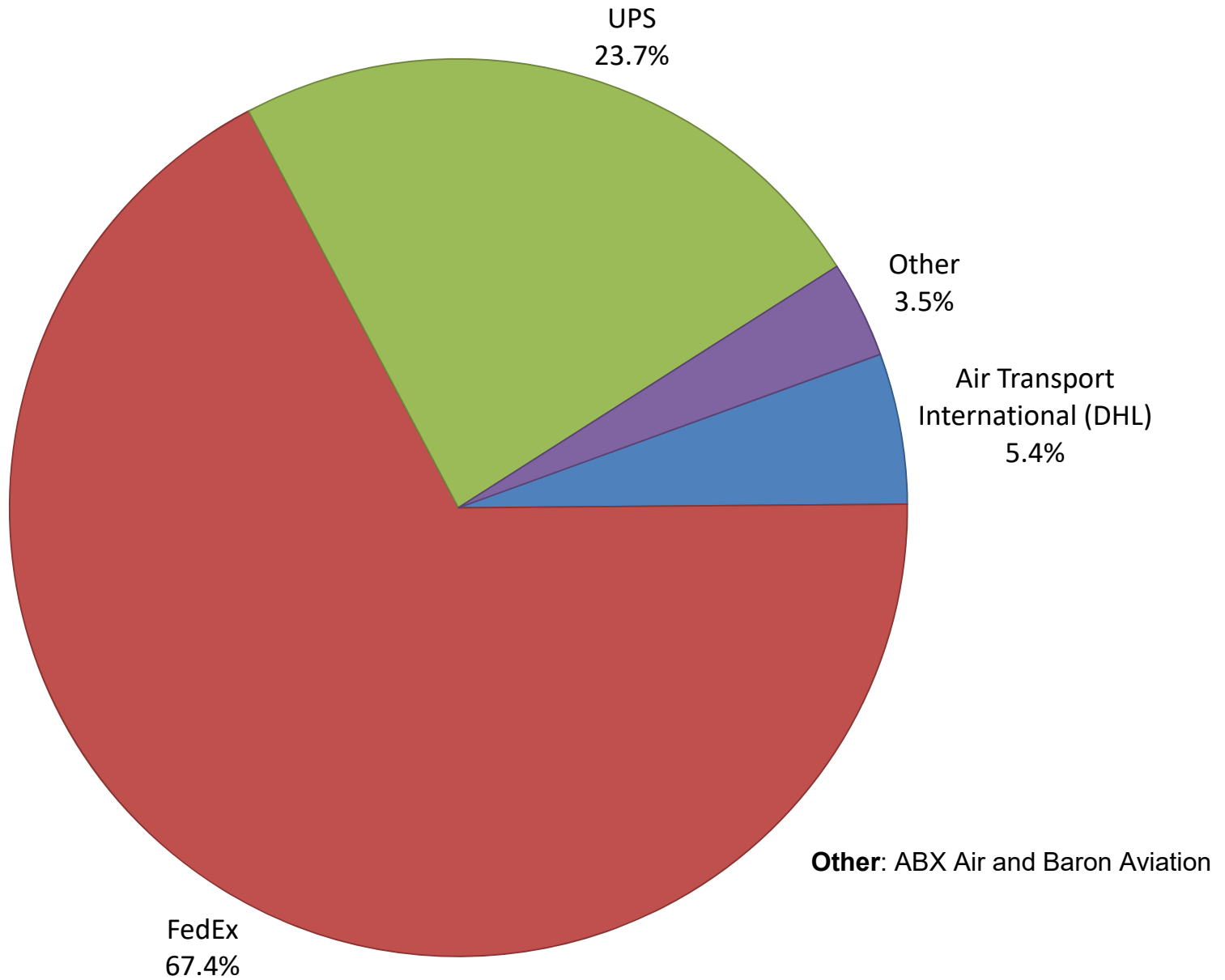
Note: American/US Airways, Delta and United Airlines percentages include Affiliates.

**AUS Belly Freight Market Shares
January 2019**

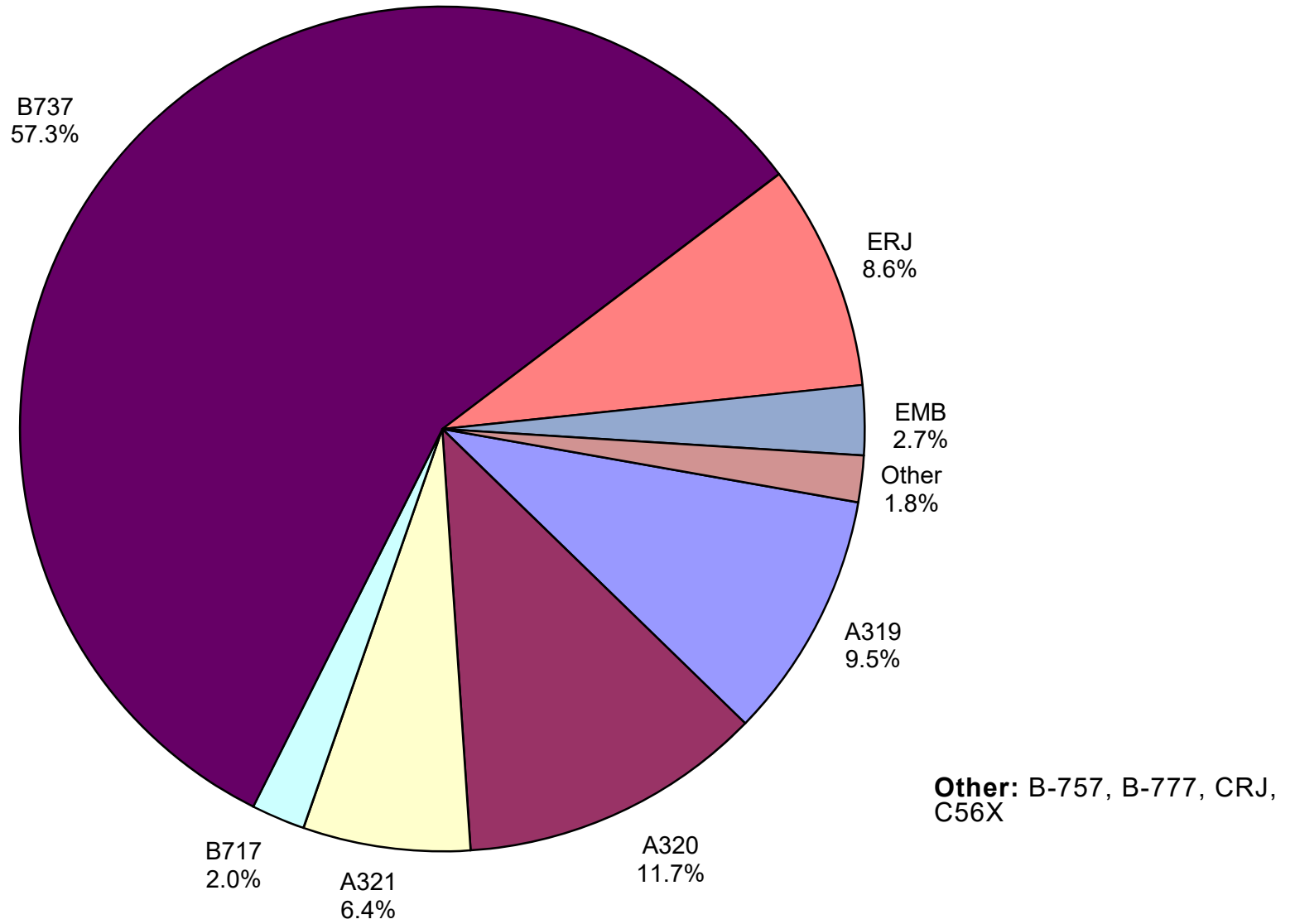


Other = Alaska Airlines

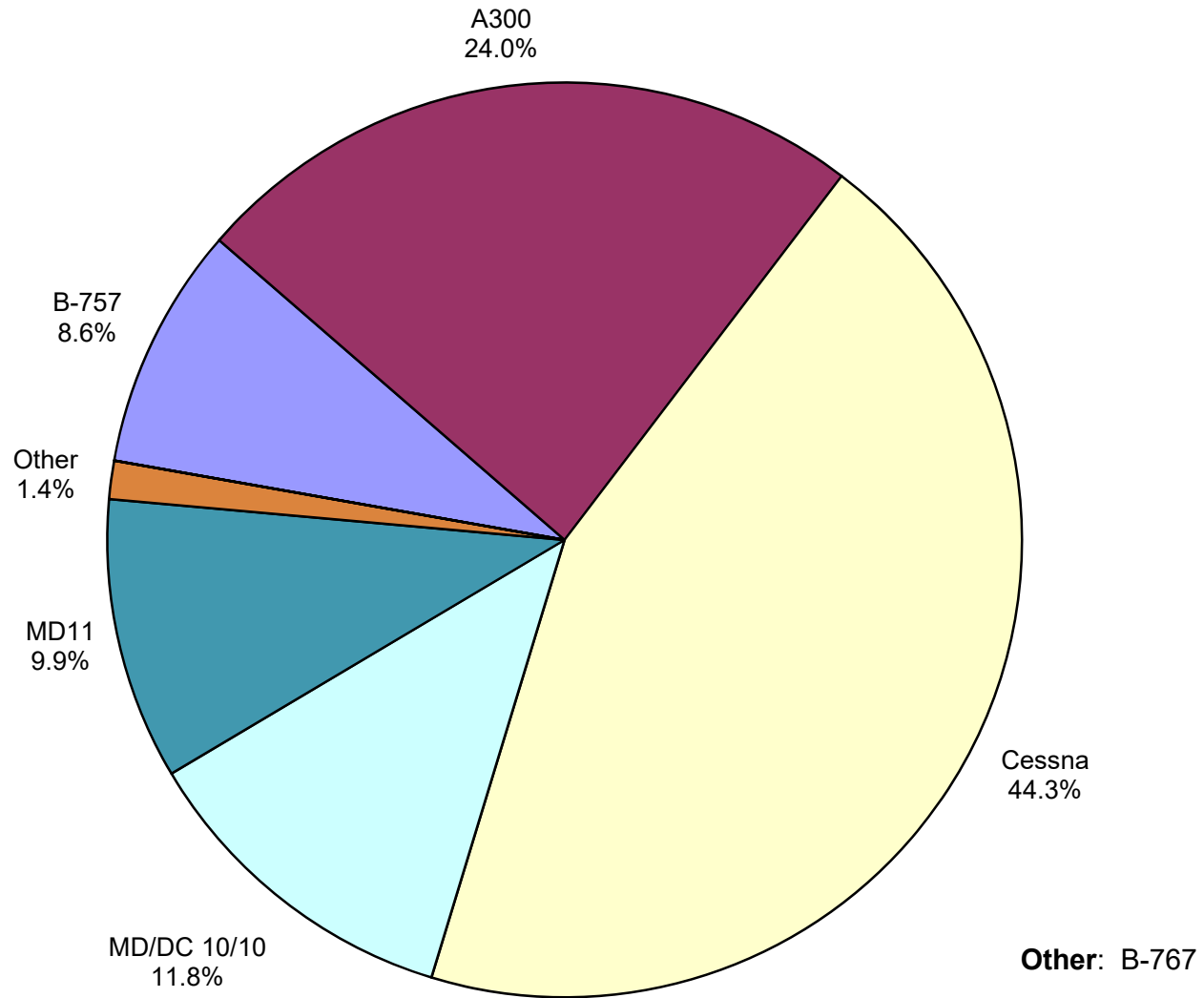
Air Cargo Market Share January 2019



**AUS Scheduled Passenger Aircraft Fleet Mix
January 2019**



**AUS Scheduled Cargo Aircraft Fleet Mix
January 2019**



Austin-Bergstrom International Airport

PAX Detail Report - January, 2019

Company	01/2019	01/2018	Period		YTD 2019	YTD 2018	YTD		2019 Share	2018 Share	Share Diff
			Difference	Change			Difference	Change			
Aerovias de Mexico S.A. de C.V.	3,243	3,400	-157	-4.6	3,243	3,400	-157	-4.6	0.3	0.3	0.0
Air Canada	4,275	3,216	1,059	32.9	4,275	3,216	1,059	32.9	0.4	0.3	0.1
Alaska Airlines	43,263	28,425	14,838	52.2	43,263	28,425	14,838	52.2	3.8	2.7	1.1
Allegiant Air	8,470	20,197	-11,727	-58.1	8,470	20,197	-11,727	-58.1	0.7	1.9	-1.2
American Airlines	233,799	200,256	33,543	16.8	233,799	200,256	33,543	16.8	20.7	19.2	1.5
British Airways	12,835	10,581	2,254	21.3	12,835	10,581	2,254	21.3	1.1	1.0	0.1
Concesionaria Vuela Compañía de Aviación, S.A.P.I. de C.V.	434	1,224	-790	-64.5	434	1,224	-790	-64.5	0.0	0.1	-0.1
Delta Air Lines	146,730	131,494	15,236	11.6	146,730	131,494	15,236	11.6	13.0	12.6	0.4
Frontier Airlines	45,861	42,241	3,620	8.6	45,861	42,241	3,620	8.6	4.1	4.1	0.0
JetBlue Airways	41,896	43,464	-1,568	-3.6	41,896	43,464	-1,568	-3.6	3.7	4.2	-0.5
Southwest Airlines	416,721	396,931	19,790	5.0	416,721	396,931	19,790	5.0	36.9	38.1	-1.2
Sun Country Airlines	590	669	-79	-11.8	590	669	-79	-11.8	0.1	0.1	0.0
Swift Air	403	266	137	51.5	403	266	137	51.5	0.0	0.0	0.0
United Airlines	170,448	148,312	22,136	14.9	170,448	148,312	22,136	14.9	15.1	14.2	0.9
VIA Airlines	514	1,041	-527	-50.6	514	1,041	-527	-50.6	0.0	0.1	-0.1
Virgin America	0	11,117	-11,117	-100.0	0	11,117	-11,117	-100.0	0.0	1.1	-1.1
Report Totals	1,129,482	1,042,834	86,648	8.3%	1,129,482	1,042,834	86,648	8.3%			

Statistics Included in Report:

Domestic Passengers:	Enplaned Revenue, Deplaned Revenue, Enplaned Non-Revenue, Deplaned Non-Revenue
International Passengers:	Enplaned Revenue, Deplaned Revenue, Enplaned Non-Revenue, Deplaned Non-Revenue
International Pre-Cleared Passengers:	Enplaned Revenue, Deplaned Revenue, Enplaned Non-Revenue, Deplaned Non-Revenue
South Terminal Domestic Passengers:	Enplaned Revenue, Deplaned Revenue, Enplaned Non-Revenue, Deplaned Non-Revenue

Austin-Bergstrom International Airport

Summary Landing Report

Landing Type: Total

Month	2019		2018		2017		% Change 2019 - 2018		% Change 2018 - 2017	
	Count	Weight	Count	Weight	Count	Weight	Count	Weight	Count	Weight
January	5,348	733,746,679	5,086	688,923,110	4,768	612,688,871	5.15%	6.51%	6.67%	12.44%
February			4,706	637,500,756	4,357	552,711,639			8.01%	15.34%
March			5,643	760,648,260	5,307	685,661,659			6.33%	10.94%
April			5,797	793,367,736	5,179	689,402,051			11.93%	15.08%
May			6,117	831,431,763	5,529	736,484,083			10.63%	12.89%
June			6,211	852,438,818	5,603	752,628,599			10.85%	13.26%
July			6,346	869,502,671	5,698	763,088,836			11.37%	13.95%
August			6,245	861,046,997	5,490	741,110,019			13.75%	16.18%
September			5,737	790,731,351	5,046	679,381,339			13.69%	16.39%
October			6,078	846,310,860	5,448	743,973,610			11.56%	13.76%
November			5,684	780,994,101	5,289	718,179,948			7.47%	8.75%
December			5,600	761,317,385	5,442	737,424,963			2.90%	3.24%
Totals for Selected Period	5,348	733,746,679	5,086	688,923,110	4,768	612,688,871	5.15%	6.51%	6.67%	12.44%
Yearly Totals	5,348	733,746,679	69,250	9,474,213,808	63,156	8,412,735,617			9.65%	12.62%