

**Austin-Bergstrom International Airport
Aviation Activity Report
Calendar Year 2020 vs 2019**

Combined Terminals

	7/2020	7/2019	Percent Change	1/2020 - 7/2020	1/2019 - 7/2019	Percent Change
ABIA						
Total Passenger Activity						
Domestic Enplaned Revenue	187,837	707,466	-73.45%	1,851,211	4,420,938	-58.13%
Domestic Deplaned Revenue	178,486	707,354	-74.77%	1,857,369	4,390,088	-57.69%
International Enplaned Revenue	1,182	27,316	-95.67%	31,999	128,853	-75.17%
International Deplaned Revenue	857	29,857	-97.13%	34,858	131,088	-73.41%
Domestic Enplaned Non-Revenue	6,123	15,922	-61.54%	60,770	99,590	-38.98%
Domestic Deplaned Non-Revenue	5,715	14,639	-60.96%	56,721	95,974	-40.90%
International Enplaned Non-Revenue	12	237	-94.94%	493	957	-48.48%
International Deplaned Non-Revenue	14	231	-93.94%	423	866	-51.15%
Intl Enplaned Pre-Cleared Revenue	0	4,787	-100.00%	5,483	23,611	-76.78%
Intl Deplaned Pre-Cleared Revenue	0	4,728	-100.00%	4,626	22,953	-79.85%
Intl Enplaned Pre-Cleared Non-Revenue	0	37	-100.00%	108	271	-60.15%
Intl Deplaned Pre-Cleared Non-Revenue	0	45	-100.00%	100	280	-64.29%
South Terminal Domestic Enplaned Revenue	13,351	65,172	-79.51%	97,914	298,454	-67.19%
South Terminal Domestic Deplaned Revenue	12,424	64,769	-80.82%	99,825	296,627	-66.35%
South Terminal Domestic Enplaned Non-Revenue	34	203	-83.25%	483	980	-50.71%
South Terminal Domestic Deplaned Non-Revenue	30	253	-88.14%	464	1,217	-61.87%
ABIA Passenger Totals	406,065	1,643,016	-75.29	4,102,847	9,912,747	-58.61
<i>ABIA Enplaned Passenger Totals</i>	<i>208,539</i>	<i>821,140</i>	<i>-74.60</i>	<i>2,048,461</i>	<i>4,973,654</i>	<i>-58.81</i>
<i>ABIA Deplaned Passenger Totals</i>	<i>197,526</i>	<i>821,876</i>	<i>-75.97</i>	<i>2,054,386</i>	<i>4,939,093</i>	<i>-58.41</i>
<i>ABIA Domestic Passenger Totals</i>	<i>404,000</i>	<i>1,575,778</i>	<i>-74.36</i>	<i>4,024,757</i>	<i>9,603,868</i>	<i>-58.09</i>
<i>ABIA International Passenger Totals</i>	<i>2,065</i>	<i>67,238</i>	<i>-96.93</i>	<i>78,090</i>	<i>308,879</i>	<i>-74.72</i>

CURRENT PASSENGER RECORD = 1,643,016 RECORD SET = JULY 2019

Total Aircraft Operations

Air Carrier	6,466	12,884	-49.81%	49,309	81,348	-39.39%
Commuter & Air Taxi	1,203	1,065	12.96%	7,077	9,239	-23.40%
Military	434	595	-27.06%	2,710	5,578	-51.42%
General Aviation						
Itinerant	2,961	3,046	-2.79%	18,337	23,886	-23.23%
Local	0	120	-100.00%	268	508	-47.24%
Total G.A.	2,961	3,166	-6.48	18,605	24,394	-23.73
Total Operations	11,064	17,710	-37.53	77,701	120,559	-35.55

**Austin-Bergstrom International Airport
Aviation Activity Report
Calendar Year 2020 vs 2019**

By Terminal

	7/2020	7/2019	Percent Change	1/2020 - 7/2020	1/2019 - 7/2019	Percent Change
<u>Barbara Jordan Terminal (BJT)</u>						
Passenger Activity						
Domestic Enplaned Revenue	187,837	707,466	-73.45%	1,851,211	4,420,938	-58.13%
Domestic Deplaned Revenue	178,486	707,354	-74.77%	1,857,369	4,390,088	-57.69%
International Enplaned Revenue	1,182	27,316	-95.67%	31,999	128,853	-75.17%
International Deplaned Revenue	857	29,857	-97.13%	34,858	131,088	-73.41%
Domestic Enplaned Non-Revenue	6,123	15,922	-61.54%	60,770	99,590	-38.98%
Domestic Deplaned Non-Revenue	5,715	14,639	-60.96%	56,721	95,974	-40.90%
International Enplaned Non-Revenue	12	237	-95.67%	493	957	-48.48%
International Deplaned Non-Revenue	14	231	-93.94%	423	866	-51.15%
Intl Enplaned Pre-Cleared Revenue	0	4,787	-100.00%	5,483	23,611	-76.78%
Intl Deplaned Pre-Cleared Revenue	0	4,728	-100.00%	4,626	22,953	-79.85%
Intl Enplaned Pre-Cleared Non-Revenue	0	37	-100.00%	108	271	-60.15%
Intl Deplaned Pre-Cleared Non-Revenue	0	45	-100.00%	100	280	-64.29%
Barbara Jordan Terminal Passenger Totals	380,226	1,512,619	-74.86	3,904,161	9,315,469	-58.09
<i>BJT Enplaned Passenger Totals</i>	<i>195,154</i>	<i>755,765</i>	<i>-74.18</i>	<i>1,950,064</i>	<i>4,674,220</i>	<i>-58.28</i>
<i>BJT Deplaned Passenger Totals</i>	<i>185,072</i>	<i>756,854</i>	<i>-75.55</i>	<i>1,954,097</i>	<i>4,641,249</i>	<i>-57.90</i>
<i>BJT Domestic Passenger Totals</i>	<i>378,161</i>	<i>1,445,381</i>	<i>-73.84</i>	<i>3,826,071</i>	<i>9,006,590</i>	<i>-57.52</i>
<i>BJT International Passenger Totals</i>	<i>2,065</i>	<i>67,238</i>	<i>-96.93</i>	<i>78,090</i>	<i>308,879</i>	<i>-74.72</i>
<u>South Terminal (ST)</u>						
Passenger Activity						
South Terminal Domestic Enplaned Revenue	13,351	65,172	-79.51%	97,914	298,454	-67.19%
South Terminal Domestic Deplaned Revenue	12,424	64,769	-80.82%	99,825	296,627	-66.35%
South Terminal Domestic Enplaned Non-Revenue	34	203	-83.25%	483	980	-50.71%
South Terminal Domestic Deplaned Non-Revenue	30	253	-88.14%	464	1,217	-61.87%
South Terminal Passenger Totals	25,839	130,397	-80.18	198,686	597,278	-66.73
<i>ST Enplaned Passenger Totals</i>	<i>13,385</i>	<i>65,375</i>	<i>-79.53</i>	<i>98,397</i>	<i>299,434</i>	<i>-67.14</i>
<i>ST Deplaned Passenger Totals</i>	<i>12,454</i>	<i>65,022</i>	<i>-80.85</i>	<i>100,289</i>	<i>297,844</i>	<i>-66.33</i>

**Austin-Bergstrom International Airport
Aviation Activity Report
Calendar Year 2020 vs 2019**

	7/2020	7/2019	Percent Change	1/2020 - 7/2020	1/2019 - 7/2019	Percent Change
<u>Total Cargo Activity</u>						
Mail						
Domestic Enplaned Mail	160,380	164,972	-2.78%	1,184,113	1,371,441	-13.66%
Domestic Deplaned Mail	401,020	545,557	-26.49%	3,025,365	4,617,586	-34.48%
International Enplaned Mail	0	0	0.00%	0	0	0.00%
International Deplaned Mail	0	0	0.00%	0	110,830	-100.00%
South Terminal-Domestic Enplaned Mail	0	0	0.00%	0	0	0.00%
South Terminal-Domestic Deplaned Mail	0	0	0.00%	0	0	0.00%
Mail Totals	561,400	710,529	-20.99	4,209,478	6,099,857	-30.99
Cargo						
Domestic Enplaned Cargo	7,252,651	4,418,654	64.14%	38,206,352	33,625,806	13.62%
Domestic Deplaned Cargo	10,923,019	6,747,245	61.89%	57,436,864	45,885,177	25.18%
International Enplaned Cargo	16,311	352,037	-95.37%	1,039,641	2,652,433	-60.80%
International Deplaned Cargo	0	233,167	-100.00%	518,751	2,093,933	-75.23%
South Terminal-Domestic Enplaned Cargo	0	0	0.00%	0	0	0.00%
South Terminal-Domestic Deplaned Cargo	0	0	0.00%	0	0	0.00%
Cargo Totals	18,191,981	11,751,103	54.81	97,201,608	84,257,349	15.36
Belly Freight						
Domestic Enplaned Belly Freight	241,551	301,641	-19.92%	1,687,125	2,293,242	-26.43%
Domestic Deplaned Belly Freight	333,661	482,509	-30.85%	2,571,980	3,799,241	-32.30%
International Enplaned Belly Freight	1,319	290,662	-99.55%	1,035,039	2,270,058	-54.40%
International Deplaned Belly Freight	0	547,262	-100.00%	2,056,175	4,436,585	-53.65%
South Terminal-Domestic Enplaned Belly Frght	0	0	0.00%	0	0	0.00%
South Terminal-Domestic Deplaned Belly Frght	0	0	0.00%	0	0	0.00%
Belly Freight Totals	576,531	1,622,074	-64.46	7,350,319	12,799,126	-42.57
Cargo Totals (Mail, Cargo, Belly Freight)	19,329,912	14,083,706	37.25	108,761,405	103,156,332	5.43
<i>Enplaned Cargo Totals</i>	<i>7,672,212</i>	<i>5,527,966</i>	<i>38.79</i>	<i>43,152,270</i>	<i>42,212,980</i>	<i>2.23</i>
<i>Deplaned Cargo Totals</i>	<i>11,657,700</i>	<i>8,555,740</i>	<i>36.26</i>	<i>65,609,135</i>	<i>60,943,352</i>	<i>7.66</i>
<i>Domestic Cargo Totals</i>	<i>19,312,282</i>	<i>12,660,578</i>	<i>52.54</i>	<i>104,111,799</i>	<i>91,592,493</i>	<i>13.67</i>
<i>International Cargo Totals</i>	<i>17,630</i>	<i>1,423,128</i>	<i>-98.76</i>	<i>4,649,606</i>	<i>11,563,839</i>	<i>-59.79</i>

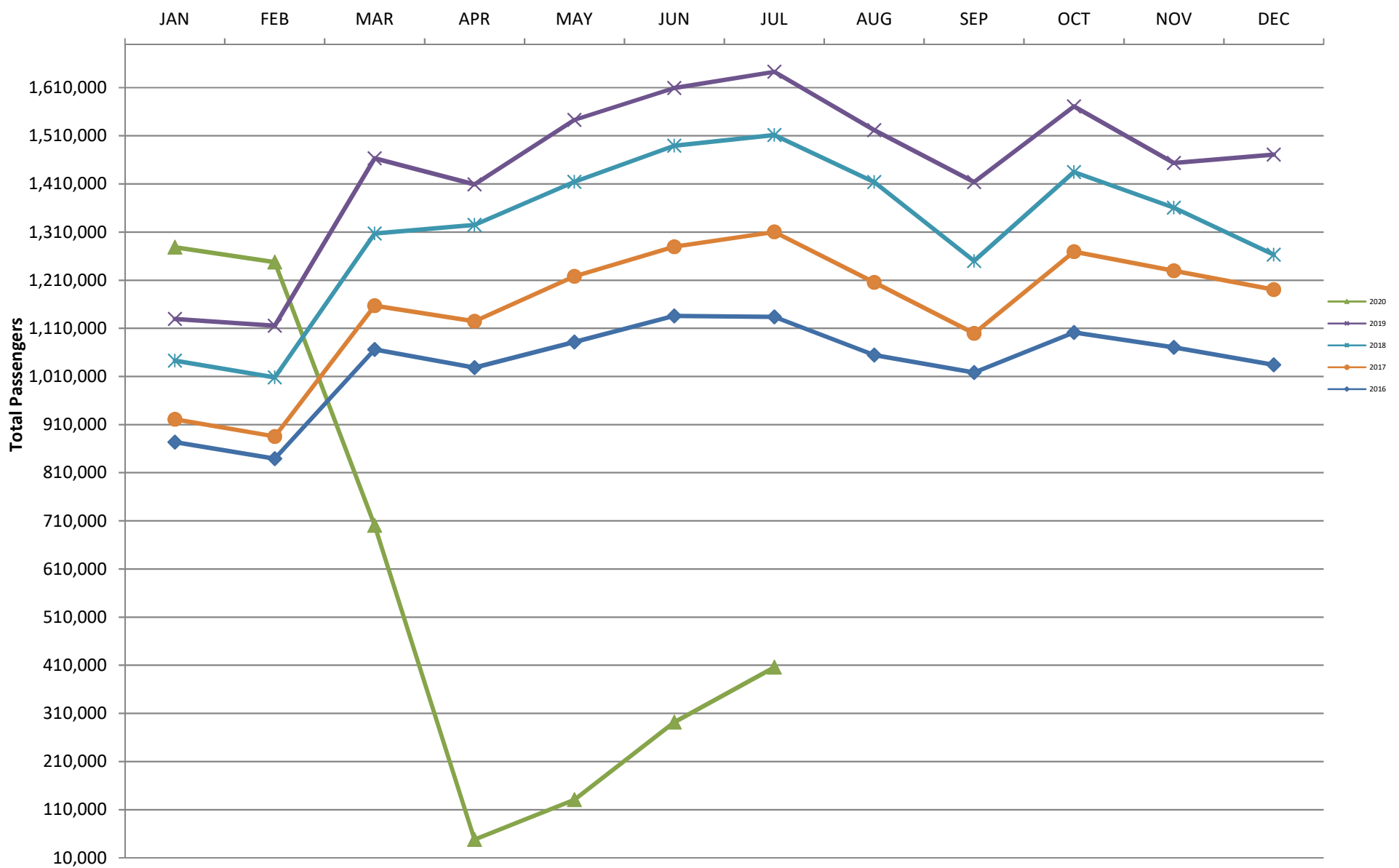
CURRENT CARGO RECORD = 40,215,518

RECORD SET = MARCH 2001

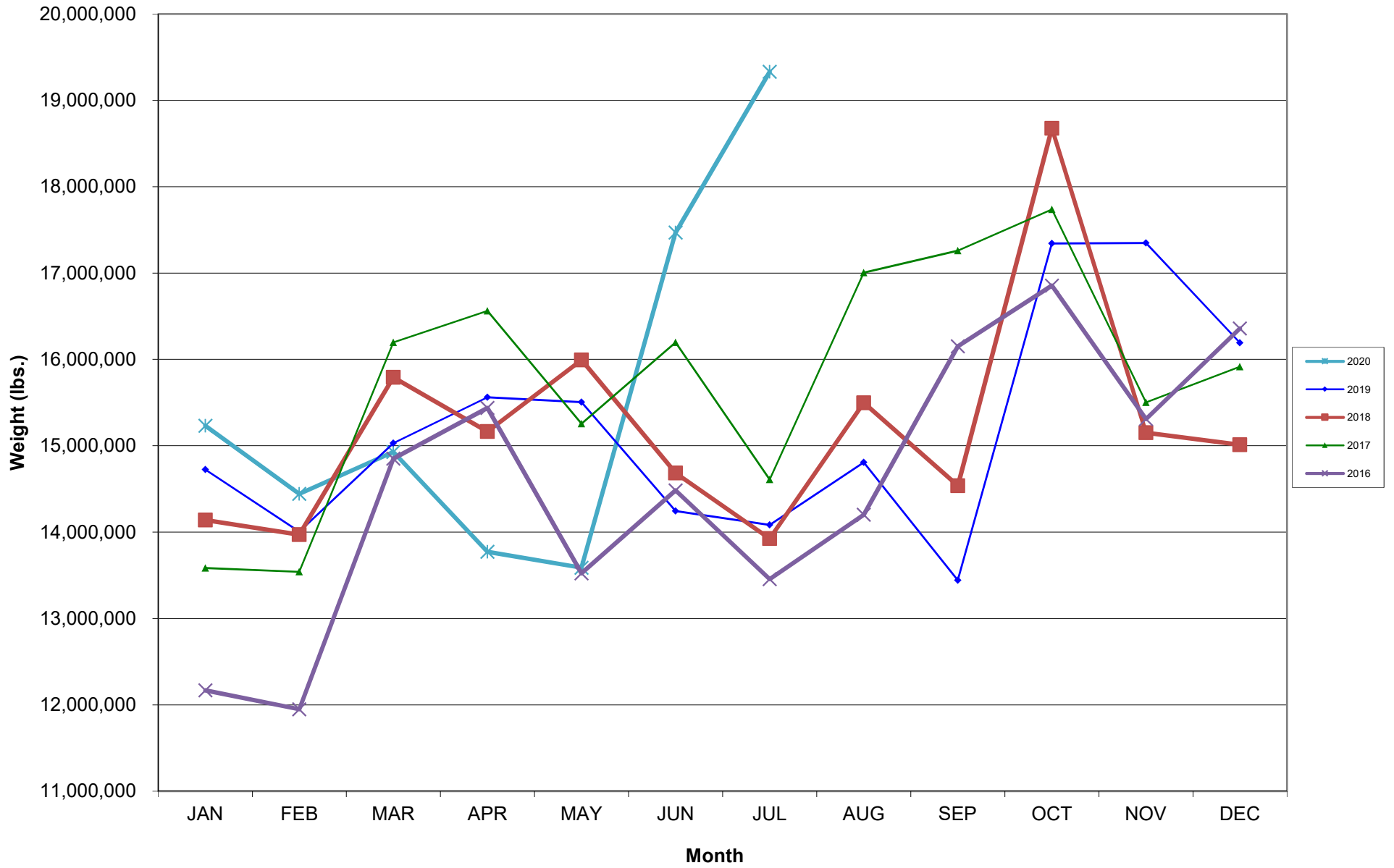
AUS – Airline Codes
July 2020

<u>Code</u>	<u>Carrier</u>
AM	Aerovias de Mexico S.A. de C.V. (DIP)
AS	Alaska Airlines, Inc.
G4	Allegiant Air, LLC
AA	American Airlines, Inc.
DL	Delta Air Lines
F9	Frontier Airlines, Inc.
B6	JetBlue Airways Corp.
WN	Southwest Airlines
NK	Spirit Airlines, Inc.
SY	Sun Country Airlines/MN Airlines LLC
UA	United Airlines, Inc.

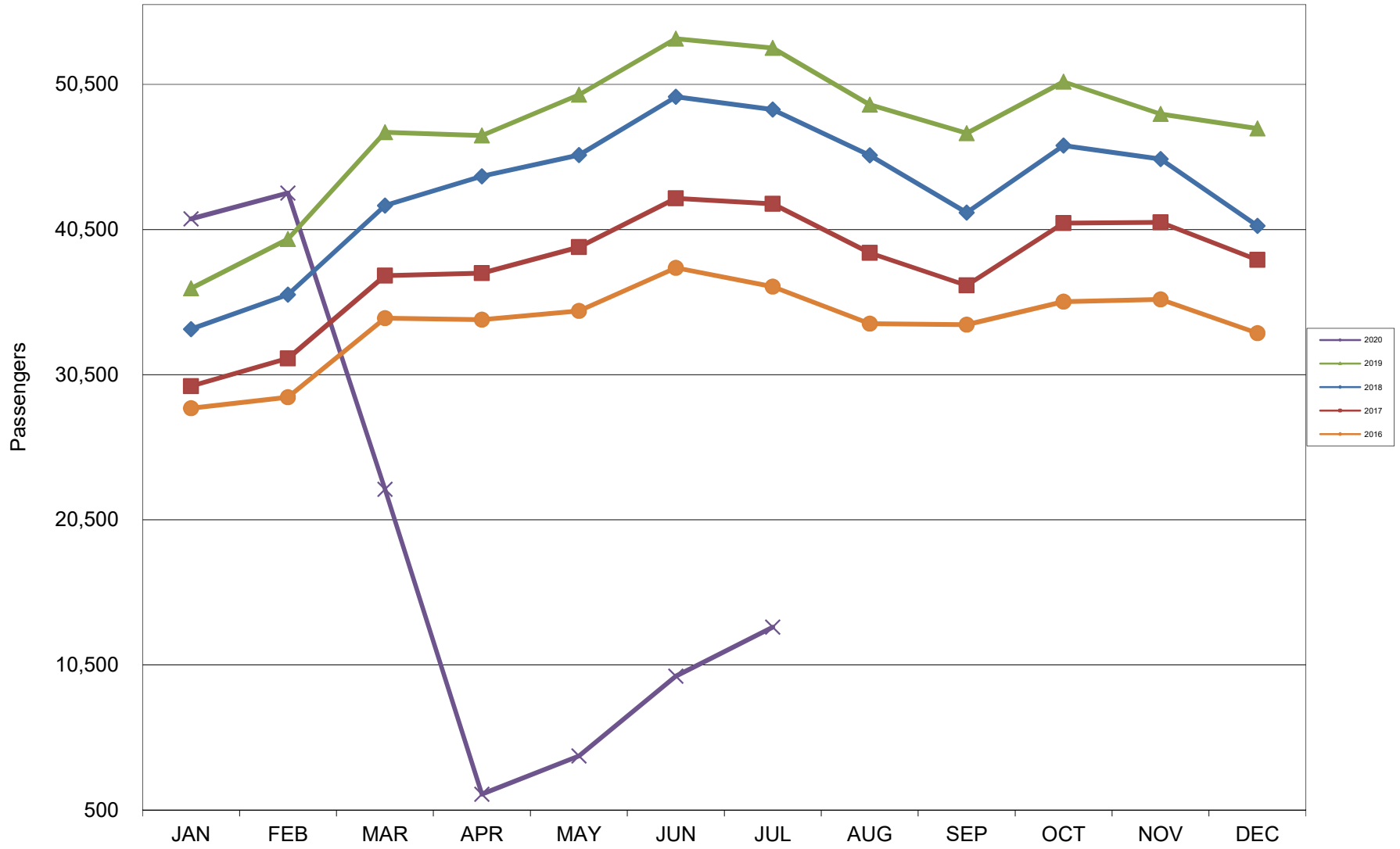
AUSTIN PASSENGER TRAFFIC 5 Year Trend



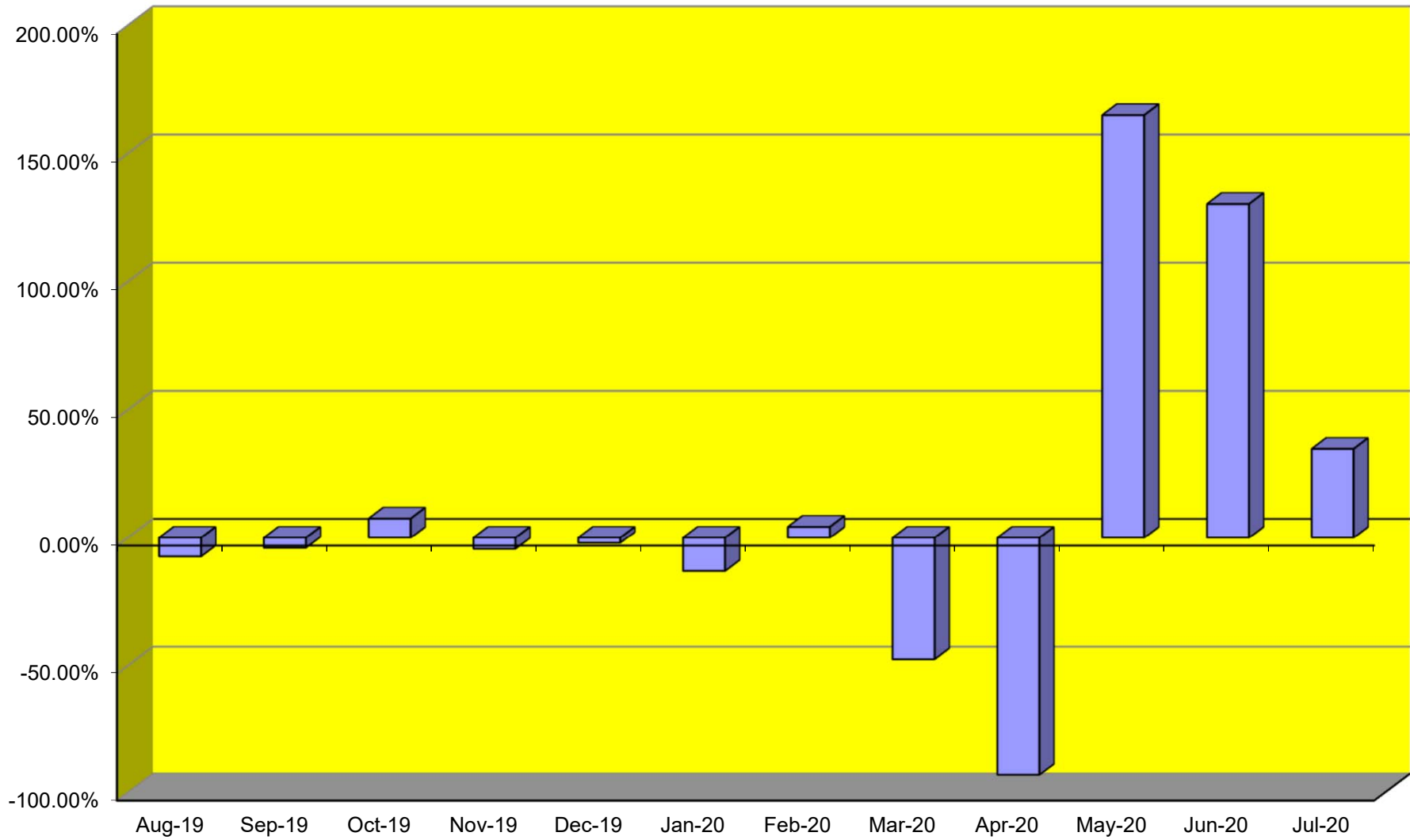
TOTAL CARGO POUNDAGE - AUSTIN, TEXAS



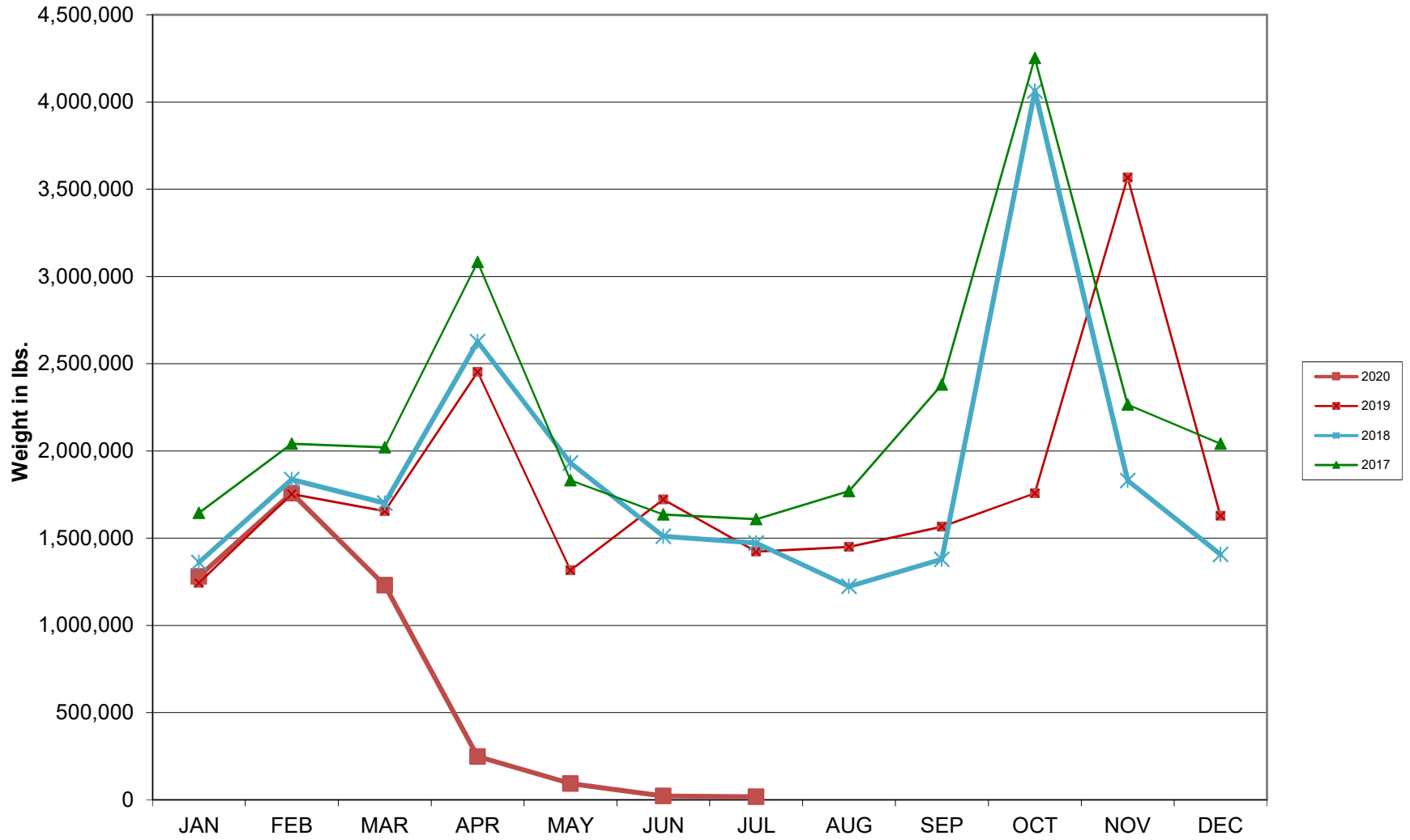
Average Daily Passengers



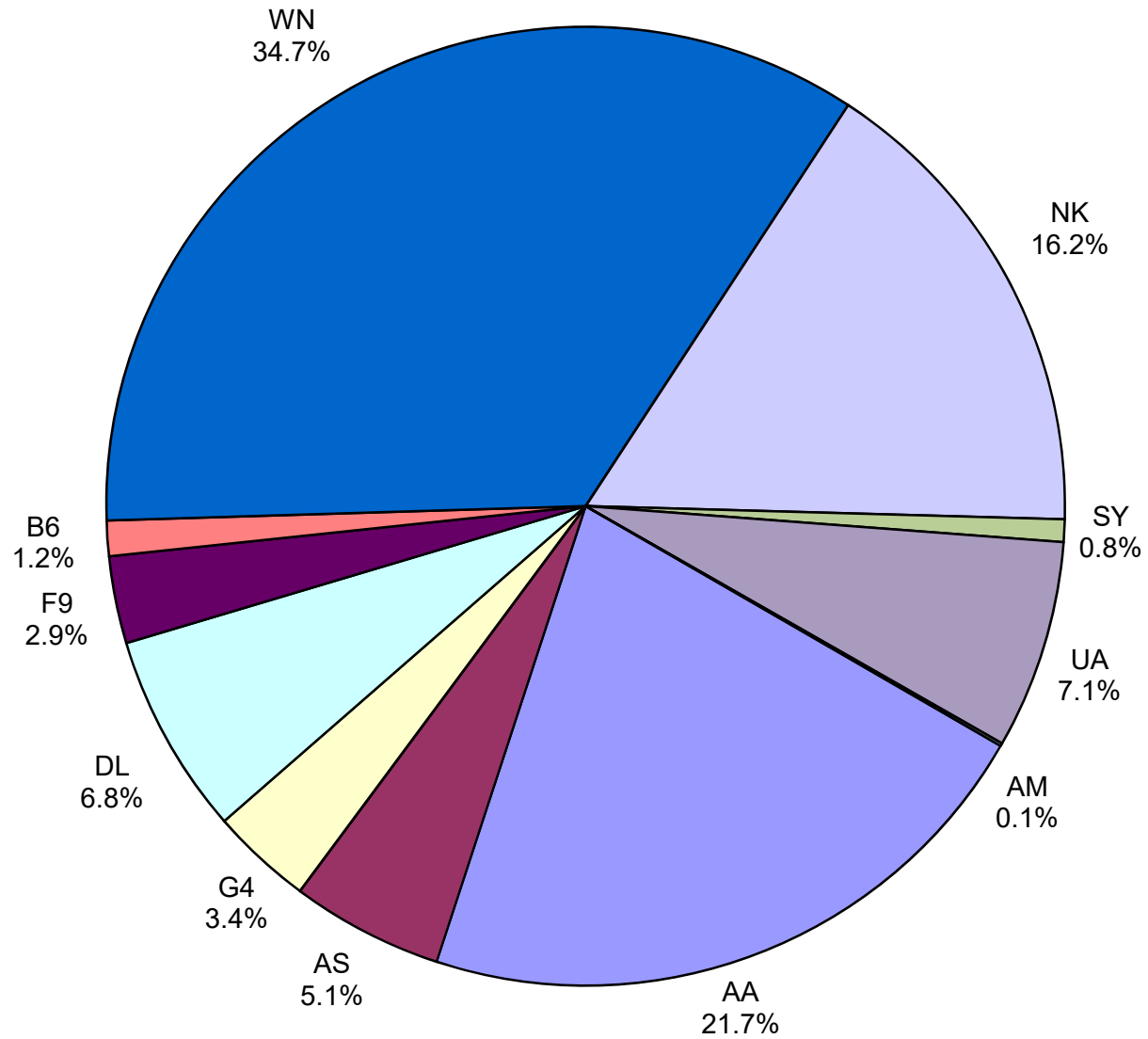
Monthly % Change in Average Daily Passengers



HISTORY OF INTERNATIONAL AIR CARGO



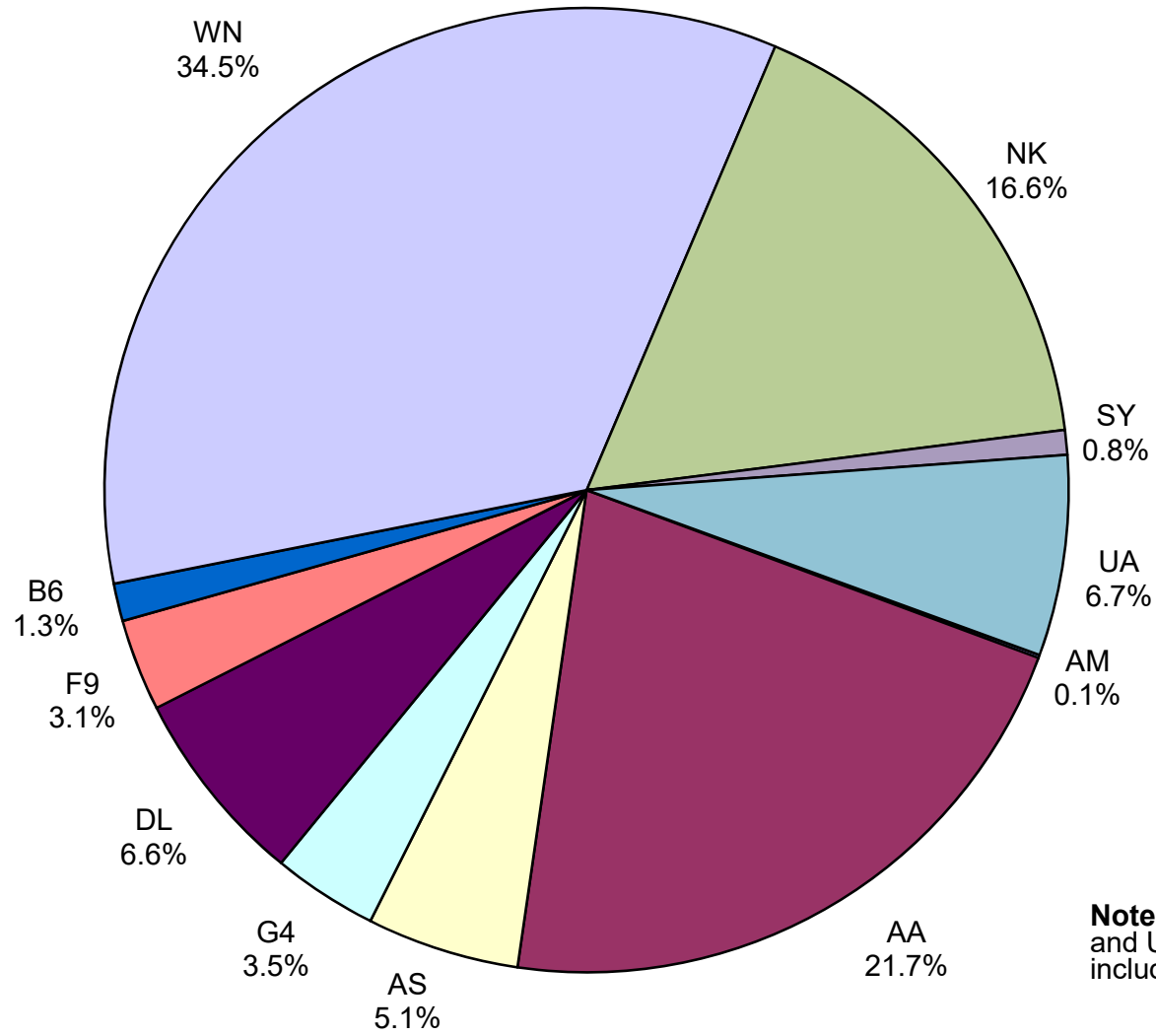
Total Passengers July 2020



Other:

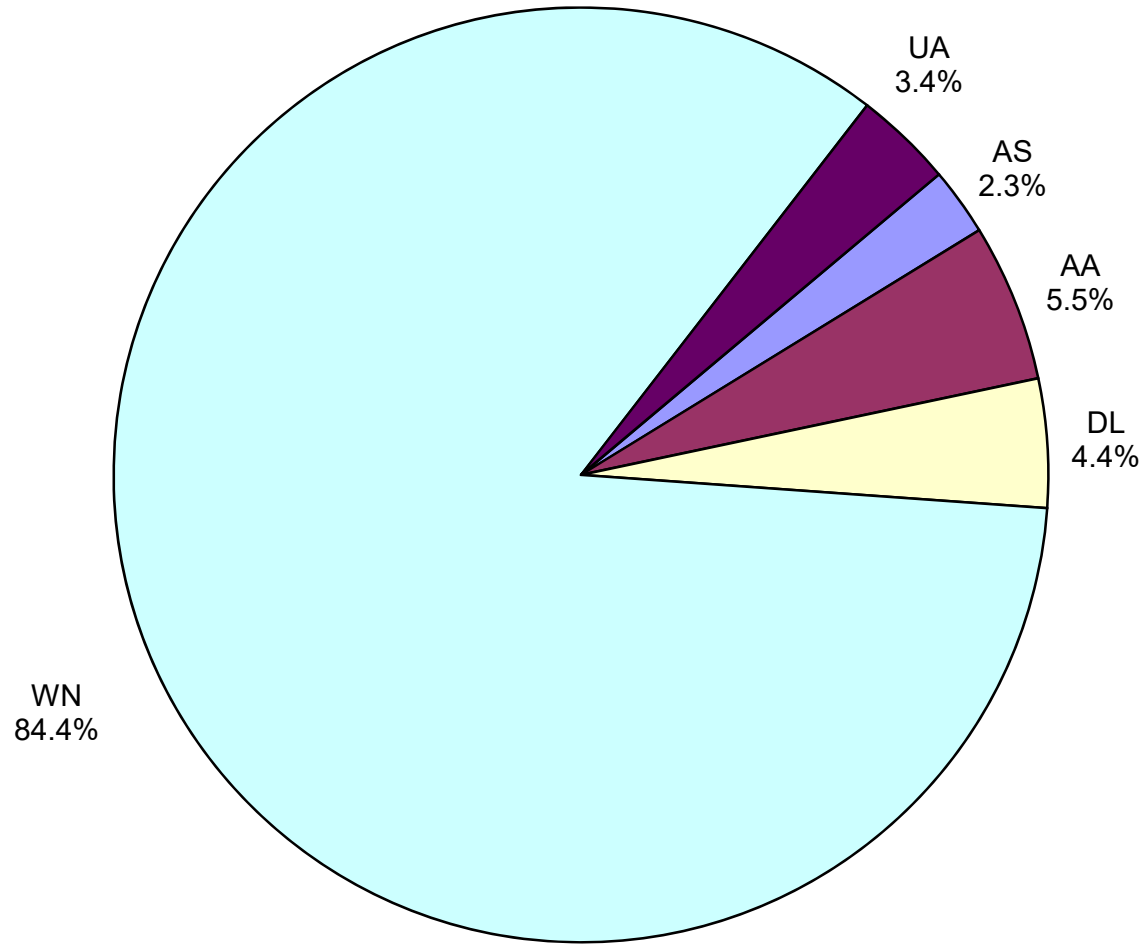
Note: American, Delta and United Airlines percentages include Affiliates.

**All Passenger Carriers
Enplaned Revenue Passengers
July 2020**



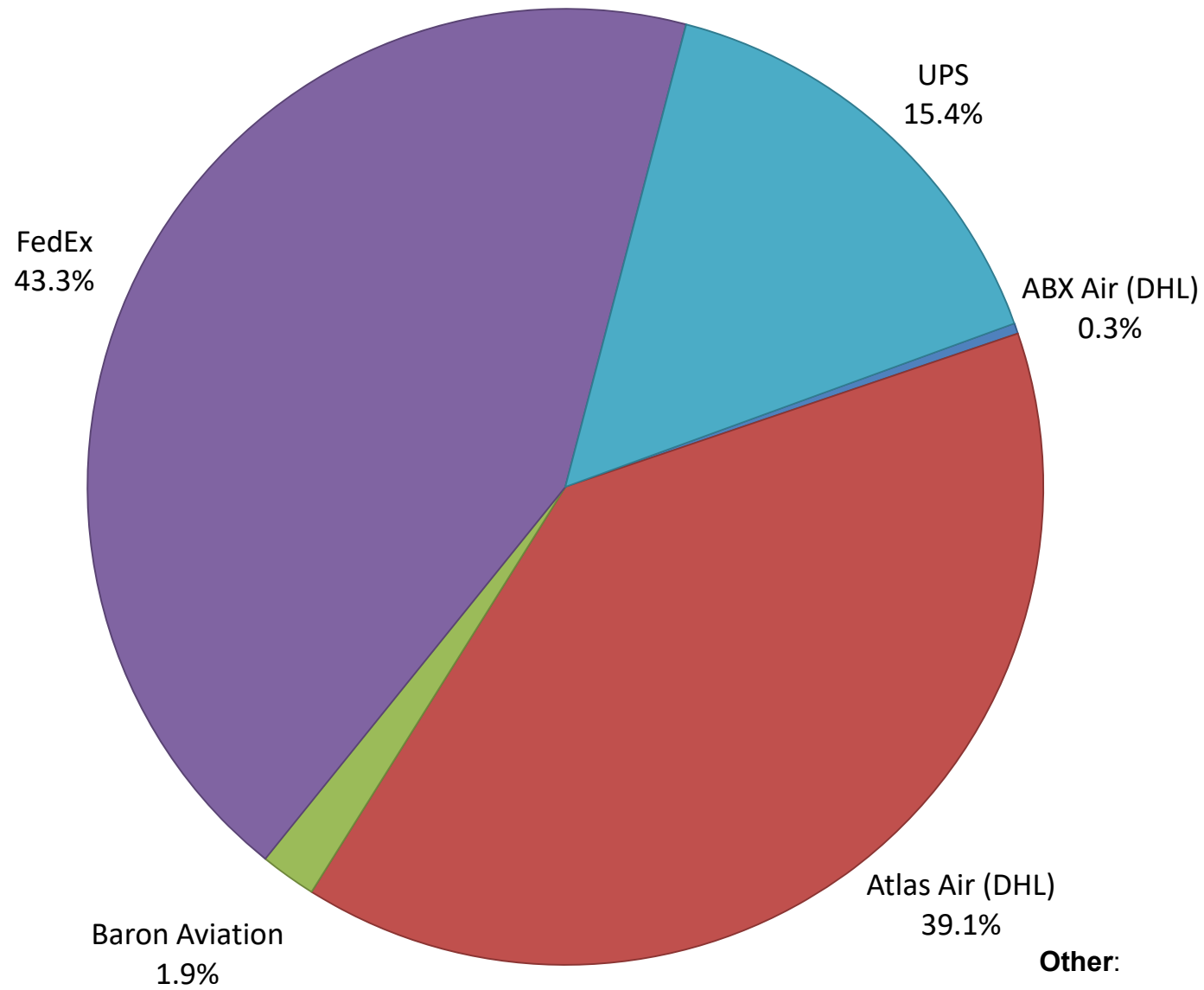
Note: American/US Airways, Delta and United Airlines percentages include Affiliates.

**AUS Belly Freight Market Shares
July 2020**

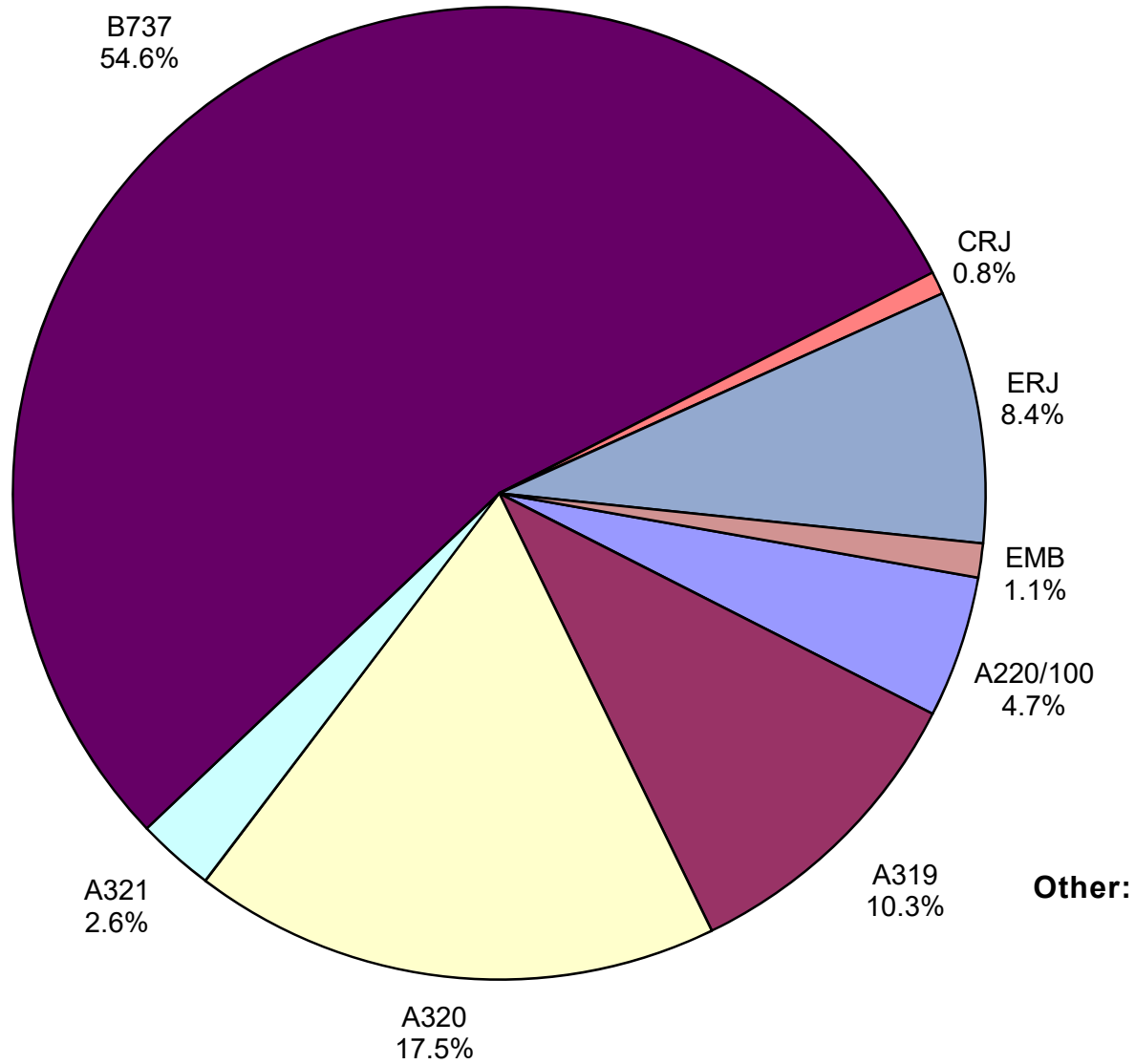


Other =

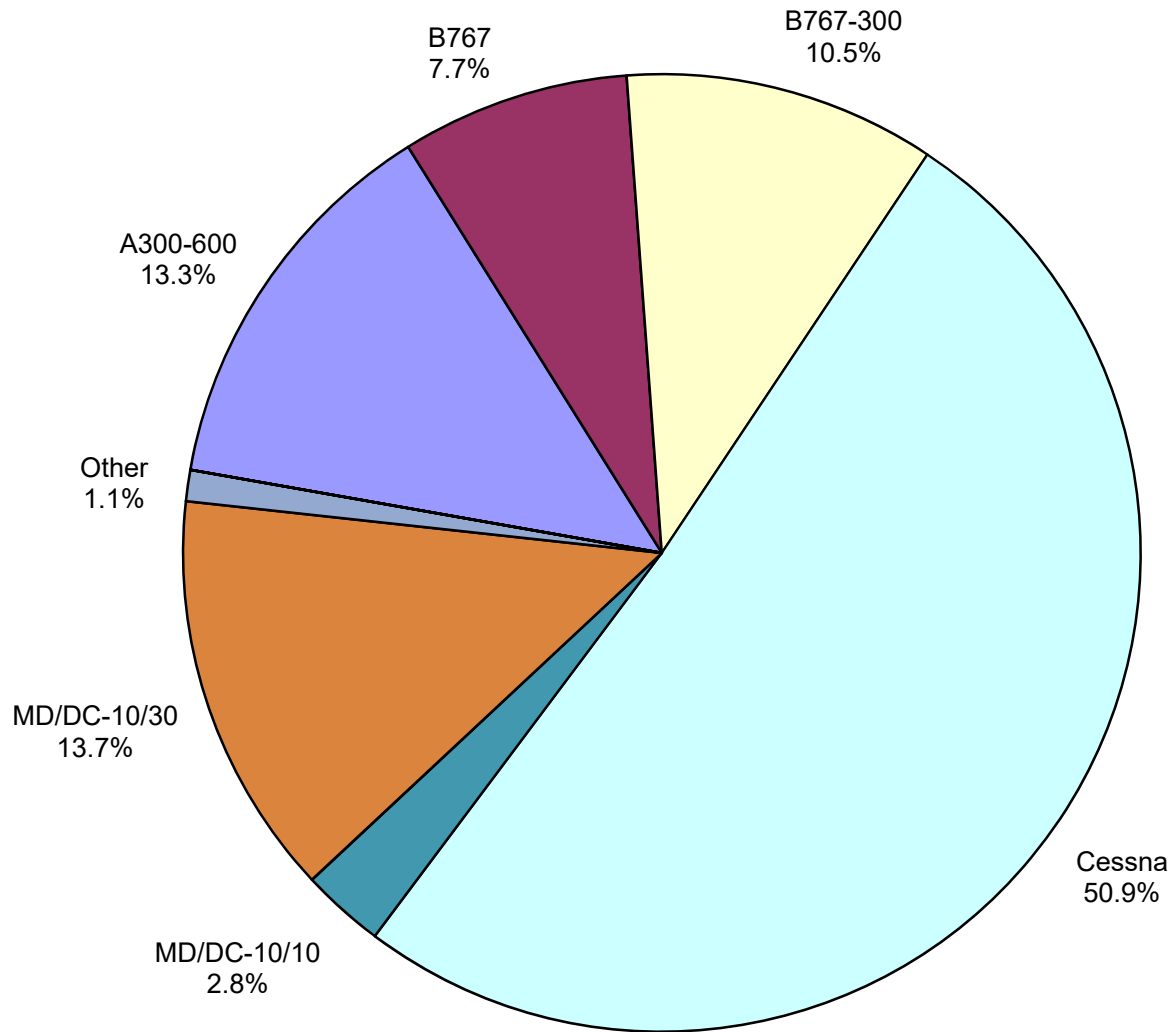
Air Cargo Market Share July 2020



**AUS Scheduled Passenger Aircraft Fleet Mix
July 2020**



**AUS Scheduled Cargo Aircraft Fleet Mix
July 2020**



Austin-Bergstrom International Airport

Pax Detail Report - July, 2020

Company	Period				YTD				2020 Share	2019 Share	Share Diff
	7/2020	7/2019	Difference	Change	YTD 2020	YTD 2019	Difference	Change			
Aeroenlaces Nacionales, SA DE CV	0	0	0	0.0	197	0	197	0.0	0.0	0.0	0.0
Aerovias de Mexico S.A. de C.V. (DIP)	378	0	378	0.0	378	0	378	0.0	0.0	0.0	0.0
Aerovias de Mexico S.A. de C.V. Pre Bankruptcy	0	5,501	-5,501	-100.0	9,915	25,133	-15,218	-60.5	0.2	0.3	-0.1
Air Canada	0	7,504	-7,504	-100.0	10,317	40,911	-30,594	-74.8	0.3	0.4	-0.1
Air New Zealand Limited	0	0	0	0.0	0	302	-302	-100.0	0.0	0.0	0.0
Alaska Airlines INC	20,848	55,821	-34,973	-62.7	161,173	354,242	-193,069	-54.5	3.9	3.6	0.3
Allegiant Air LLC	13,918	24,481	-10,563	-43.1	53,983	131,975	-77,992	-59.1	1.3	1.3	0.0
American Airlines INC	88,116	269,956	-181,840	-67.4	825,062	1,764,410	-939,348	-53.2	20.1	17.8	2.3
British Airways PLC	0	18,424	-18,424	-100.0	29,217	109,978	-80,761	-73.4	0.7	1.1	-0.4
Concesionaria Vuela Compañía de Aviación, S.A.P.I. de	0	0	0	0.0	0	434	-434	-100.0	0.0	0.0	0.0
Delta Air Lines	27,608	220,227	-192,619	-87.5	530,476	1,342,662	-812,186	-60.5	12.9	13.5	-0.6
Deutsche Lufthansa AG	0	9,445	-9,445	-100.0	15,883	26,200	-10,317	-39.4	0.4	0.3	0.1
Frontier Airlines INC	11,921	105,916	-93,995	-88.7	144,703	462,085	-317,382	-68.7	3.5	4.7	-1.2
JetBlue Airways Corporation	4,839	50,841	-46,002	-90.5	131,925	331,333	-199,408	-60.2	3.2	3.3	-0.1
Miami Air International INC Pre Bankruptcy	0	0	0	0.0	121	869	-748	-86.1	0.0	0.0	0.0
Norwegian Air UK LTD	0	8,176	-8,176	-100.0	3,474	39,484	-36,010	-91.2	0.1	0.4	-0.3
Scandinavian Airlines	0	0	0	0.0	0	423	-423	-100.0	0.0	0.0	0.0
Southwest Airlines	140,931	550,895	-409,964	-74.4	1,373,326	3,413,687	-2,040,361	-59.8	33.5	34.4	-0.9
Spirit Airlines Inc	65,797	80,960	-15,163	-18.7	278,743	398,066	-119,323	-30.0	6.8	4.0	2.8
Sun Country Airlines/MN Airlines LLC	3,119	6,875	-3,756	-54.6	4,399	17,672	-13,273	-75.1	0.1	0.2	-0.1
Swift Air LLC	0	290	-290	-100.0	928	1,557	-629	-40.4	0.0	0.0	0.0
United Airlines INC	28,590	224,934	-196,344	-87.3	528,627	1,440,152	-911,525	-63.3	12.9	14.5	-1.6
Vacation Express	0	677	-677	-100.0	0	1,750	-1,750	-100.0	0.0	0.0	0.0
VIA Airlines, INC	0	0	0	0.0	0	3,218	-3,218	-100.0	0.0	0.0	0.0
WestJet	0	2,093	-2,093	-100.0	0	6,204	-6,204	-100.0	0.0	0.1	-0.1
Report Totals	406,065	1,643,016	-1,236,951	-75.3%	4,102,847	9,912,747	-5,809,900	-58.6%	99.9%	99.9%	

Statistics Included in Report

Domestic Passengers: Enplaned Revenue, Deplaned Revenue, Enplaned Non-Revenue, Deplaned Non-Revenue

International Passengers: Enplaned Revenue, Deplaned Revenue, Enplaned Non-Revenue, Deplaned Non-Revenue

International Pre-Cleared Passengers: Enplaned Revenue, Deplaned Revenue, Enplaned Non-Revenue, Deplaned Non-Revenue

South Terminal Domestic Passengers: Enplaned Revenue, Deplaned Revenue, Enplaned Non-Revenue, Deplaned Non-Revenue

Austin-Bergstrom International Airport

Summary Landings Report

Landing Type: Total

Month	2020		2019		2018		% Change 2020- 2019		% Change 2019- 2018	
	Count	Weight	Count	Weight	Count	Weight	Count	Weight	Count	Weight
January	5,762	812,175,948	5,348	733,746,679	5,086	688,923,110	7.98%	10.62%	4.78%	4.93%
February	5,382	764,833,023	5,040	692,708,930	4,706	637,500,756	8.41%	10.66%	7.66%	9.36%
March	5,278	742,099,772	5,964	825,483,911	5,643	760,648,260	-11.17%	-9.35%	5.38%	6.89%
April	1,884	264,508,162	5,899	815,621,798	5,797	793,367,736	-68.87%	-68.74%	-0.34%	0.56%
May	1,608	223,266,578	6,294	881,747,150	6,117	831,431,763	-76.11%	-76.59%	-1.13%	0.20%
June	2,119	293,669,395	6,322	890,410,020	6,211	852,438,818	-68.98%	-69.80%	-2.30%	-1.73%
July	3,401	458,639,882	6,551	915,103,306	6,346	869,502,671	-48.58%	-50.20%	-0.12%	0.54%
August	0	0	6,447	906,499,773	6,245	861,046,997	-100.00%	-100.00%	-0.96%	-0.55%
September	0	0	6,020	848,899,951	5,737	790,731,351	-100.00%	-100.00%	1.37%	2.73%
October	0	0	6,459	916,700,076	6,078	846,310,860	-100.00%	-100.00%	1.67%	2.68%
November	0	0	5,924	836,527,780	5,684	780,994,101	-100.00%	-100.00%	3.81%	4.20%
December	0	0	6,078	848,973,148	5,600	761,317,385	-100.00%	-100.00%	11.36%	13.06%
Totals For Selected Period	25,434	3,559,192,760	41,418	5,754,821,794	39,906	5,433,813,114	-38.59%	-38.15%	3.79%	5.91%
Yearly Totals	25,434	3,559,192,760	72,346	10,112,422,522	69,250	9,474,213,808	-64.84%	-64.80%	4.47%	6.74%