

**Austin-Bergstrom International Airport  
Aviation Activity Report  
Calendar Year 2019 vs 2018**

**Combined Terminals**

	7/2019	7/2018	Percent Change	1/2019 - 7/2019	1/2018 - 7/2018	Percent Change
<b>ABIA</b>						
<b>Total Passenger Activity</b>						
Domestic Enplaned Revenue	707,466	687,726	2.87	4,420,938	4,222,692	4.69
Domestic Deplaned Revenue	707,354	688,887	2.68	4,390,088	4,190,499	4.76
International Enplaned Revenue	27,316	25,814	5.82	128,853	121,629	5.94
International Deplaned Revenue	29,857	29,569	0.97	131,088	121,214	8.15
Domestic Enplaned Non-Revenue	15,922	18,634	-14.55	99,590	103,602	-3.87
Domestic Deplaned Non-Revenue	14,639	17,983	-18.60	95,974	99,341	-3.39
International Enplaned Non-Revenue	237	141	68.09	957	901	6.22
International Deplaned Non-Revenue	231	131	76.34	866	723	19.78
Intl Enplaned Pre-Cleared Revenue	4,787	1,812	164.18	23,611	13,121	79.95
Intl Deplaned Pre-Cleared Revenue	4,728	2,381	98.57	22,953	13,649	68.17
Intl Enplaned Pre-Cleared Non-Revenue	37	29	27.59	271	221	22.62
Intl Deplaned Pre-Cleared Non-Revenue	45	54	-16.67	280	245	14.29
South Terminal Domestic Enplaned Revenue	65,172	19,534	233.63	298,454	104,424	185.81
South Terminal Domestic Deplaned Revenue	64,769	18,902	242.66	296,627	105,339	181.59
South Terminal Domestic Enplaned Non-Revenue	203	17	1,094.12	980	32	2,962.50
South Terminal Domestic Deplaned Non-Revenue	253	20	1,165.00	1,217	48	2,435.42
<b>ABIA Passenger Totals</b>	<b>1,643,016</b>	<b>1,511,634</b>	<b>8.69</b>	<b>9,912,747</b>	<b>9,097,680</b>	<b>8.96</b>
<i>ABIA Enplaned Passenger Totals</i>	<i>821,140</i>	<i>753,707</i>	<i>8.95</i>	<i>4,973,654</i>	<i>4,566,622</i>	<i>8.91</i>
<i>ABIA Deplaned Passenger Totals</i>	<i>821,876</i>	<i>757,927</i>	<i>8.44</i>	<i>4,939,093</i>	<i>4,531,058</i>	<i>9.01</i>
<i>ABIA Domestic Passenger Totals</i>	<i>1,575,778</i>	<i>1,451,703</i>	<i>8.55</i>	<i>9,603,868</i>	<i>8,825,977</i>	<i>8.81</i>
<i>ABIA International Passenger Totals</i>	<i>67,238</i>	<i>59,931</i>	<i>12.19</i>	<i>308,879</i>	<i>271,703</i>	<i>13.68</i>
<b>CURRENT PASSENGER RECORD = 1,643,016 RECORD SET = JULY 2019</b>						
<b>Total Aircraft Operations</b>						
Air Carrier	12,884	12,335	4.45	81,348	77,456	5.02
Commuter & Air Taxi	1,065	1,216	-12.42	9,239	9,938	-7.03
Military	595	1,011	-41.15	5,578	6,140	-9.15
General Aviation						
Itinerant	3,046	3,864	-21.17	23,886	27,588	-13.42
Local	120	166	-27.71	508	931	-45.44
Total G.A.	<b>3,166</b>	<b>4,030</b>	<b>-21.44</b>	<b>24,394</b>	<b>28,519</b>	<b>-14.46</b>
<b>Total Operations</b>	<b>17,710</b>	<b>18,592</b>	<b>-4.74</b>	<b>120,559</b>	<b>122,053</b>	<b>-1.22</b>

**Austin-Bergstrom International Airport  
Aviation Activity Report  
Calendar Year 2019 vs 2018**

**By Terminal**

	7/2019	7/2018	Percent Change	1/2019 - 7/2019	1/2018 - 7/2018	Percent Change
<b><u>Barbara Jordan Terminal (BJT)</u></b>						
<b>Passenger Activity</b>						
Domestic Enplaned Revenue	707,466	687,726	2.87	4,420,938	4,222,692	4.69
Domestic Deplaned Revenue	707,354	688,887	2.68	4,390,088	4,190,499	4.76
International Enplaned Revenue	27,316	25,814	5.82	128,853	121,629	5.94
International Deplaned Revenue	29,857	29,569	0.97	131,088	121,214	8.15
Domestic Enplaned Non-Revenue	15,922	18,634	-14.55	99,590	103,602	-3.87
Domestic Deplaned Non-Revenue	14,639	17,983	-18.60	95,974	99,341	-3.39
International Enplaned Non-Revenue	237	141	68.09	957	901	6.22
International Deplaned Non-Revenue	231	131	76.34	866	723	19.78
Intl Enplaned Pre-Cleared Revenue	4,787	1,812	164.18	23,611	13,121	79.95
Intl Deplaned Pre-Cleared Revenue	4,728	2,381	98.57	22,953	13,649	68.17
Intl Enplaned Pre-Cleared Non-Revenue	37	29	27.59	271	221	22.62
Intl Deplaned Pre-Cleared Non-Revenue	45	54	-16.67	280	245	14.29
<b>Barbara Jordan Terminal Passenger Totals</b>	<b>1,512,619</b>	<b>1,473,161</b>	<b>2.68</b>	<b>9,315,469</b>	<b>8,887,837</b>	<b>4.81</b>
<i>BJT Enplaned Passenger Totals</i>	<i>755,765</i>	<i>734,156</i>	<i>2.94</i>	<i>4,674,220</i>	<i>4,462,166</i>	<i>4.75</i>
<i>BJT Deplaned Passenger Totals</i>	<i>756,854</i>	<i>739,005</i>	<i>2.42</i>	<i>4,641,249</i>	<i>4,425,671</i>	<i>4.87</i>
<i>BJT Domestic Passenger Totals</i>	<i>1,445,381</i>	<i>1,413,230</i>	<i>2.28</i>	<i>9,006,590</i>	<i>8,616,134</i>	<i>4.53</i>
<i>BJT International Passenger Totals</i>	<i>67,238</i>	<i>59,931</i>	<i>12.19</i>	<i>308,879</i>	<i>271,703</i>	<i>13.68</i>
<b><u>South Terminal (ST)</u></b>						
<b>Passenger Activity</b>						
South Terminal Domestic Enplaned Revenue	65,172	19,534	233.63	298,454	104,424	185.81
South Terminal Domestic Deplaned Revenue	64,769	18,902	242.66	296,627	105,339	181.59
South Terminal Domestic Enplaned Non-Revenue	203	17	1094.12	980	32	2962.50
South Terminal Domestic Deplaned Non-Revenue	253	20	1165.00	1,217	48	2435.42
<b>South Terminal Passenger Totals</b>	<b>130,397</b>	<b>38,473</b>	<b>238.93</b>	<b>597,278</b>	<b>209,843</b>	<b>184.63</b>
<i>ST Enplaned Passenger Totals</i>	<i>65,375</i>	<i>19,551</i>	<i>234.38</i>	<i>299,434</i>	<i>104,456</i>	<i>186.66</i>
<i>ST Deplaned Passenger Totals</i>	<i>65,022</i>	<i>18,922</i>	<i>243.63</i>	<i>297,844</i>	<i>105,387</i>	<i>182.62</i>

**Austin-Bergstrom International Airport  
Aviation Activity Report  
Calendar Year 2019 vs 2018**

	7/2019	7/2018	Percent Change	1/2019 - 7/2019	1/2018 - 7/2018	Percent Change
<b><u>Total Cargo Activity</u></b>						
<b>Mail</b>						
Domestic Enplaned Mail	164,972	196,364	-15.99	1,371,441	1,369,388	0.15
Domestic Deplaned Mail	545,557	449,402	21.40	4,617,586	2,916,543	58.32
International Enplaned Mail	0	0	0.00	0	0	0.00
International Deplaned Mail	0	0	0.00	110,830	0	0.00
South Terminal-Domestic Enplaned Mail	0	0	0.00	0	0	0.00
South Terminal-Domestic Deplaned Mail	0	0	0.00	0	0	0.00
<b>Mail Totals</b>	<b>710,529</b>	<b>645,766</b>	<b>10.03</b>	<b>6,099,857</b>	<b>4,285,931</b>	<b>42.32</b>
<b>Cargo</b>						
Domestic Enplaned Cargo	4,418,654	4,591,035	-3.75	33,625,806	34,169,475	-1.59
Domestic Deplaned Cargo	6,747,245	6,424,122	5.03	45,885,177	47,316,325	-3.02
International Enplaned Cargo	352,037	550,459	-36.05	2,652,433	4,585,503	-42.16
International Deplaned Cargo	233,167	148,608	56.90	2,093,933	1,939,828	7.94
South Terminal-Domestic Enplaned Cargo	0	0	0.00	0	0	0.00
South Terminal-Domestic Deplaned Cargo	0	0	0.00	0	0	0.00
<b>Cargo Totals</b>	<b>11,751,103</b>	<b>11,714,224</b>	<b>0.31</b>	<b>84,257,349</b>	<b>88,011,131</b>	<b>-4.27</b>
<b>Belly Freight</b>						
Domestic Enplaned Belly Freight	301,641	303,562	-0.63	2,293,242	2,094,543	9.49
Domestic Deplaned Belly Freight	482,509	487,066	-0.94	3,799,241	3,364,399	12.92
International Enplaned Belly Freight	290,662	161,724	79.73	2,270,058	1,868,264	21.51
International Deplaned Belly Freight	547,262	611,843	-10.56	4,436,585	4,043,560	9.72
South Terminal-Domestic Enplaned Belly Frght	0	0	0.00	0	0	0.00
South Terminal-Domestic Deplaned Belly Frght	0	0	0.00	0	0	0.00
<b>Belly Freight Totals</b>	<b>1,622,074</b>	<b>1,564,195</b>	<b>3.70</b>	<b>12,799,126</b>	<b>11,370,766</b>	<b>12.56</b>
<b>Cargo Totals (Mail, Cargo, Belly Freight)</b>	<b>14,083,706</b>	<b>13,924,185</b>	<b>1.15</b>	<b>103,156,332</b>	<b>103,667,828</b>	<b>-0.49</b>
<i>Enplaned Cargo Totals</i>	<i>5,527,966</i>	<i>5,803,144</i>	<i>-4.74</i>	<i>42,212,980</i>	<i>44,087,173</i>	<i>-4.25</i>
<i>Deplaned Cargo Totals</i>	<i>8,555,740</i>	<i>8,121,041</i>	<i>5.35</i>	<i>60,943,352</i>	<i>59,580,655</i>	<i>2.29</i>
<i>Domestic Cargo Totals</i>	<i>12,660,578</i>	<i>12,451,551</i>	<i>1.68</i>	<i>91,592,493</i>	<i>91,230,673</i>	<i>0.40</i>
<i>International Cargo Totals</i>	<i>1,423,128</i>	<i>1,472,634</i>	<i>-3.36</i>	<i>11,563,839</i>	<i>12,437,155</i>	<i>-7.02</i>

CURRENT CARGO RECORD = 40,215,518

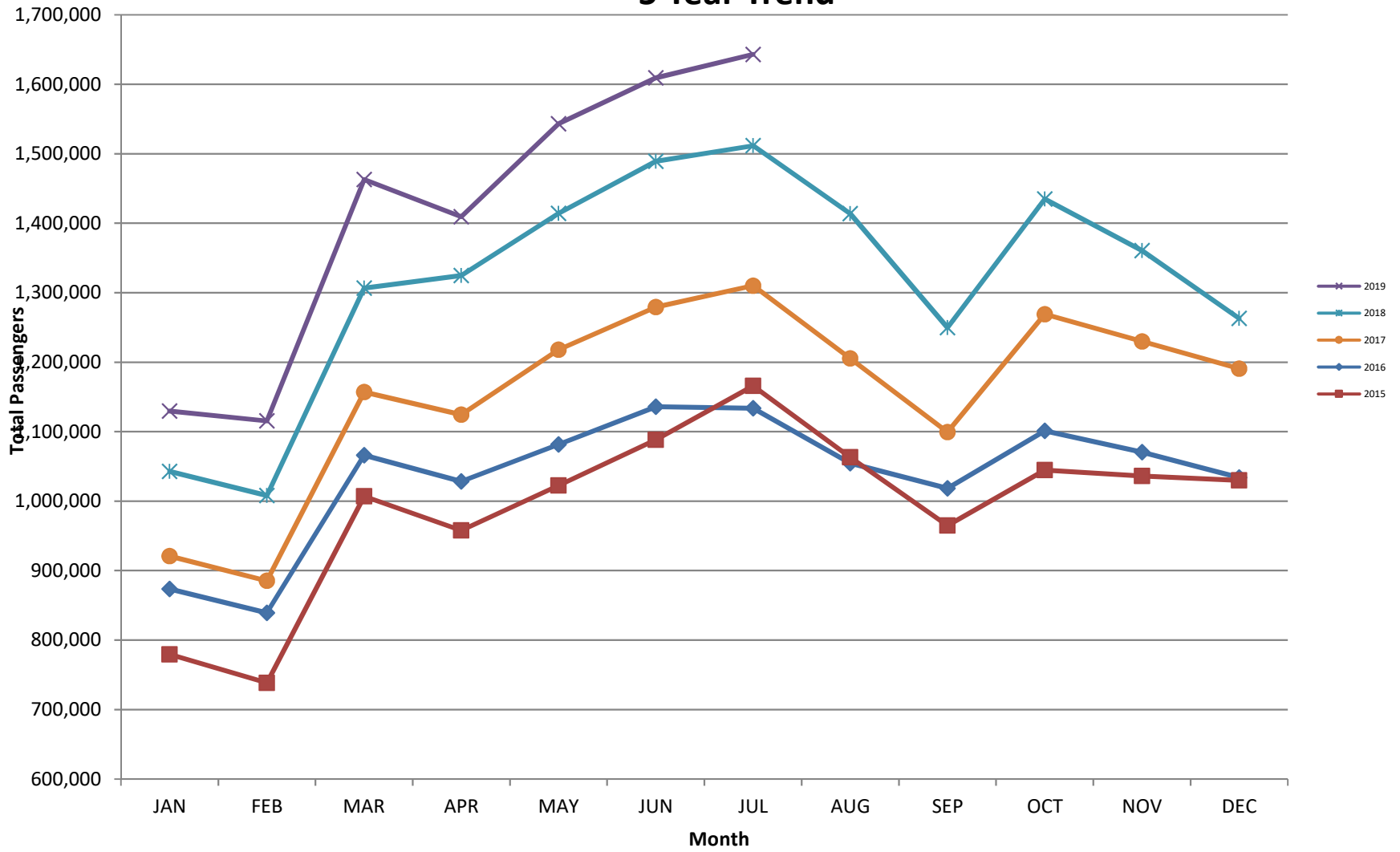
RECORD SET = MARCH 2001

**AUS – Airline Codes**  
July 2019

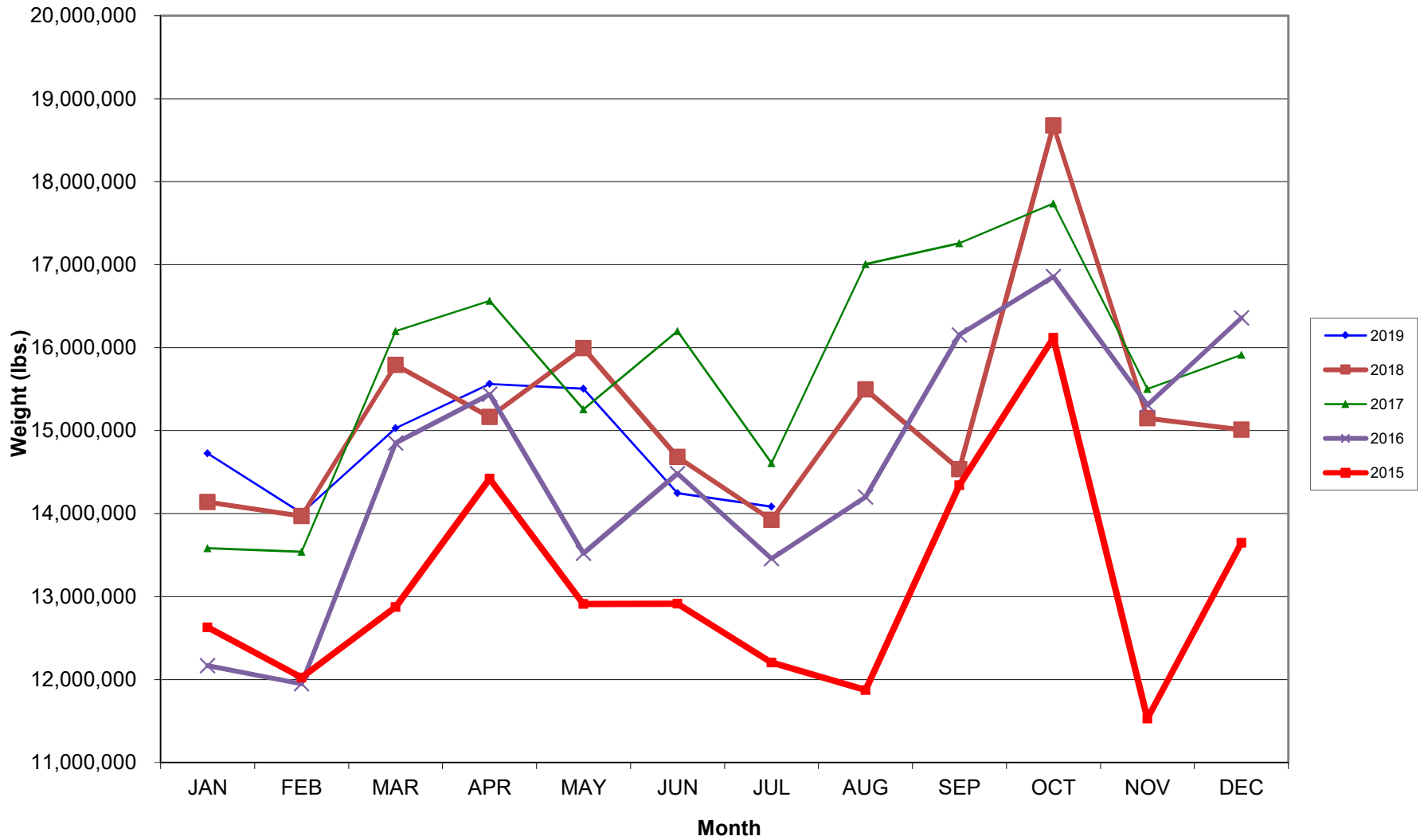
<b><u>Code</u></b>	<b><u>Carrier</u></b>
AM	Aerovias de Mexico S.A. de C.V. dba AeroMexico Airlines
AC	Air Canada
AS	Alaska Airlines, Inc.
G4	Allegiant Air, LLC
AA	American Airlines, Inc.
BA	British Airways Plc
DL	Delta Airlines
LH	Deutsche Lufthansa AG
F9	Frontier Airlines
B6	JetBlue Airways Corp.
DY	Norwegian Air UK LTD
WN	Southwest Airlines
NK	Spirit Airlines
SY	Sun Country Airlines
WQ	Swift Air
UA	United Airlines, Inc.
WQ	Vacation Express handled by Swift Air
WS	WestJet Airlines

# AUSTIN PASSENGER TRAFFIC

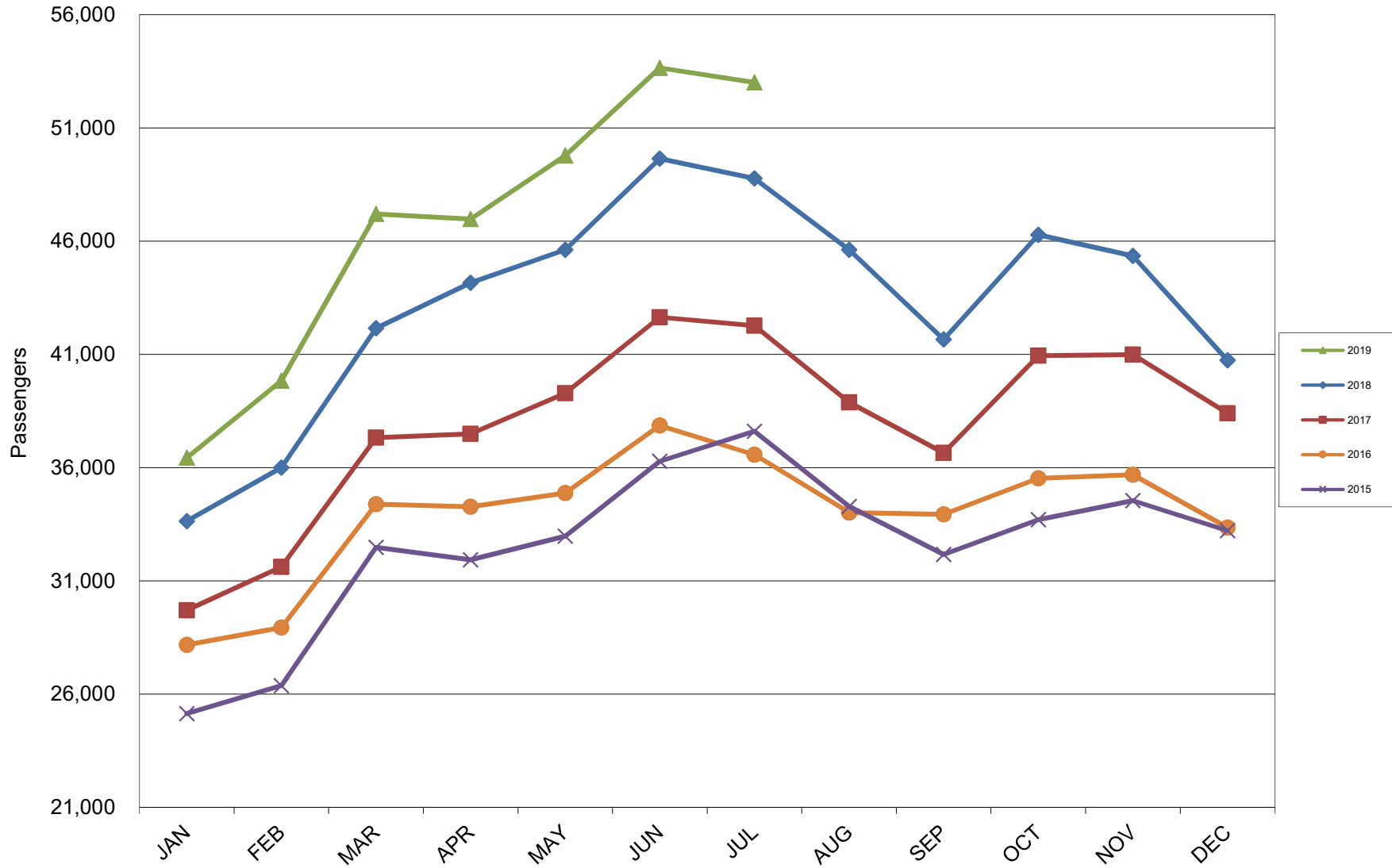
## 5 Year Trend



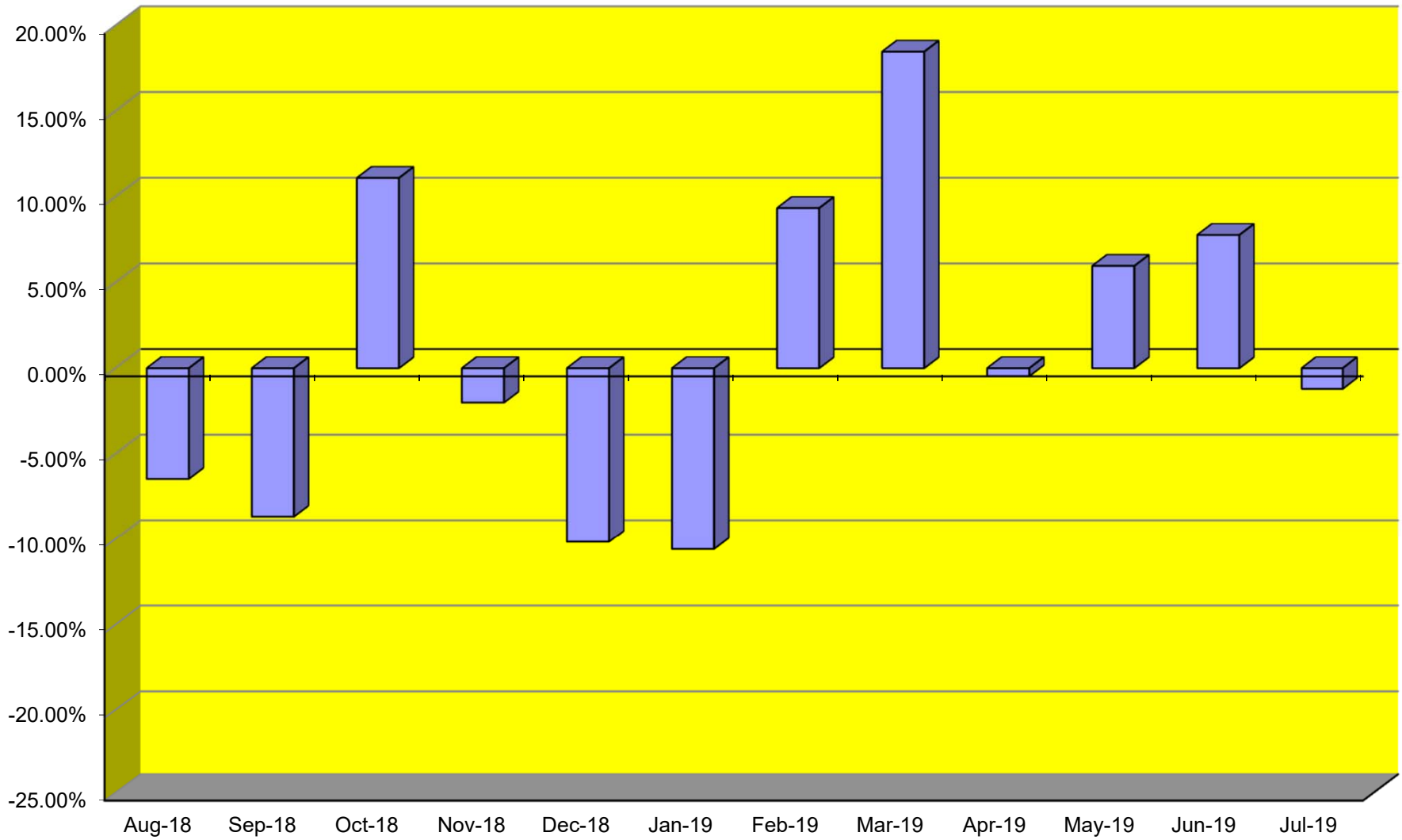
### TOTAL CARGO POUNDAGE - AUSTIN, TEXAS



Average Daily Passengers

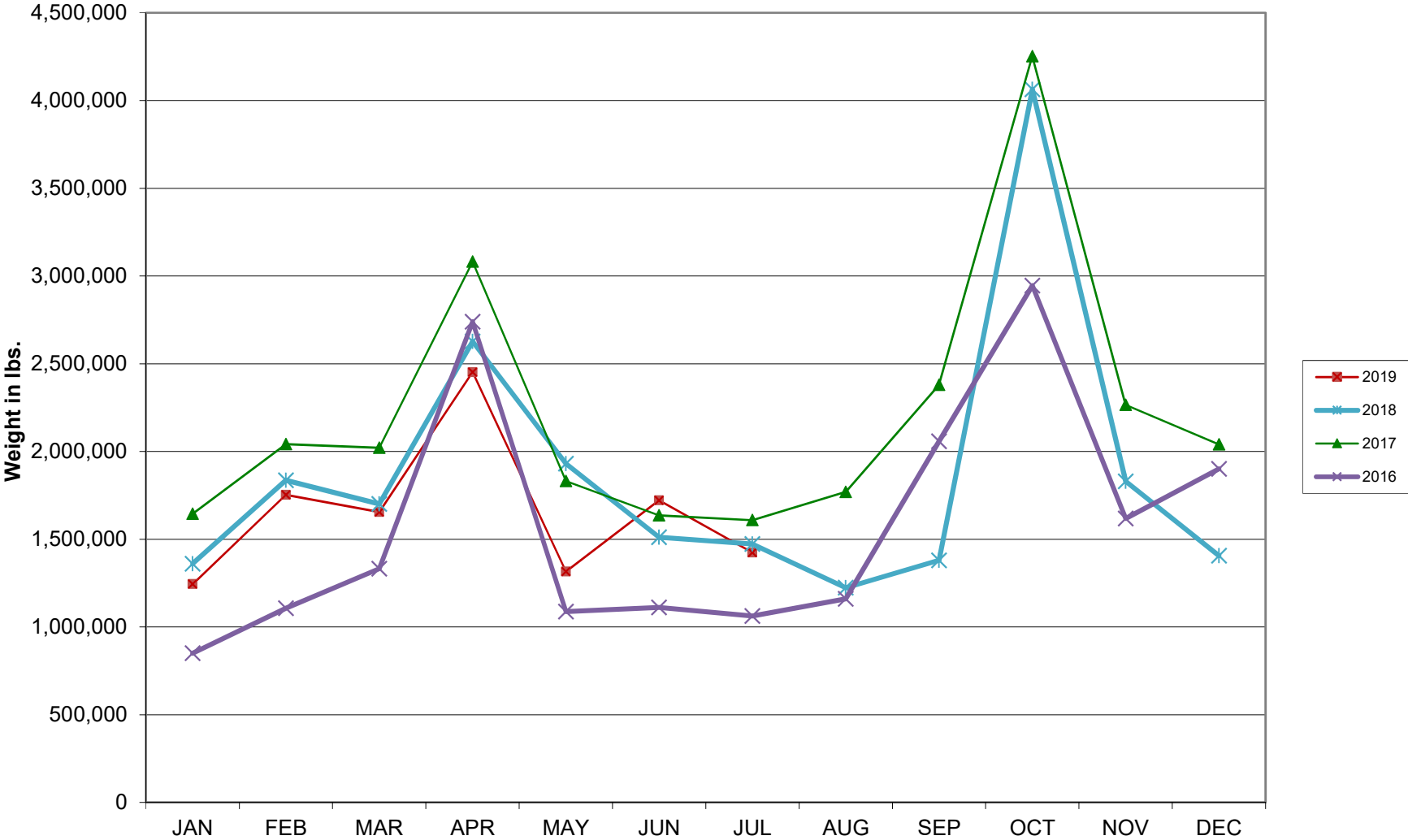


**Monthly % Change in Average Daily Passengers**

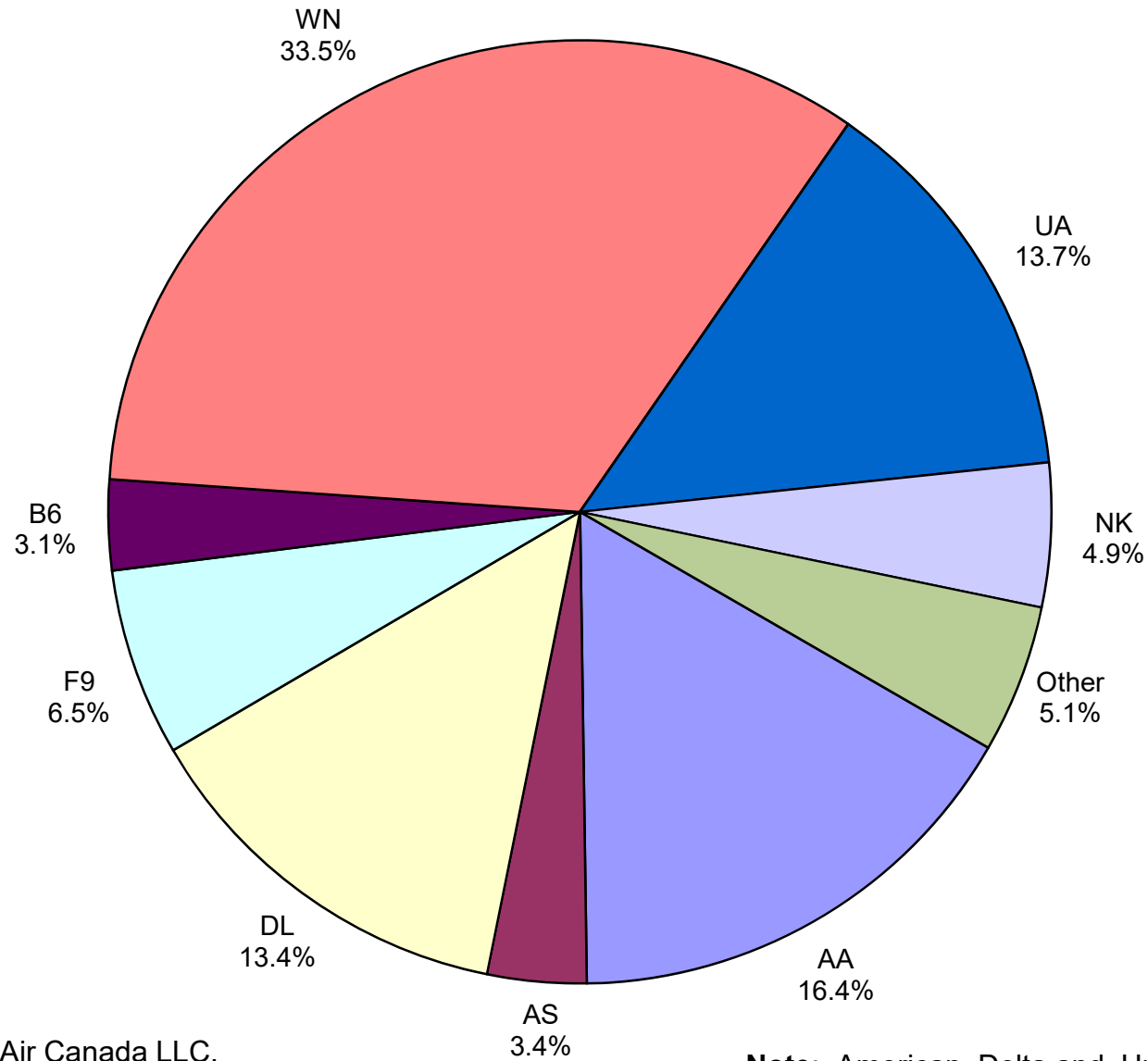




# HISTORY OF INTERNATIONAL AIR CARGO



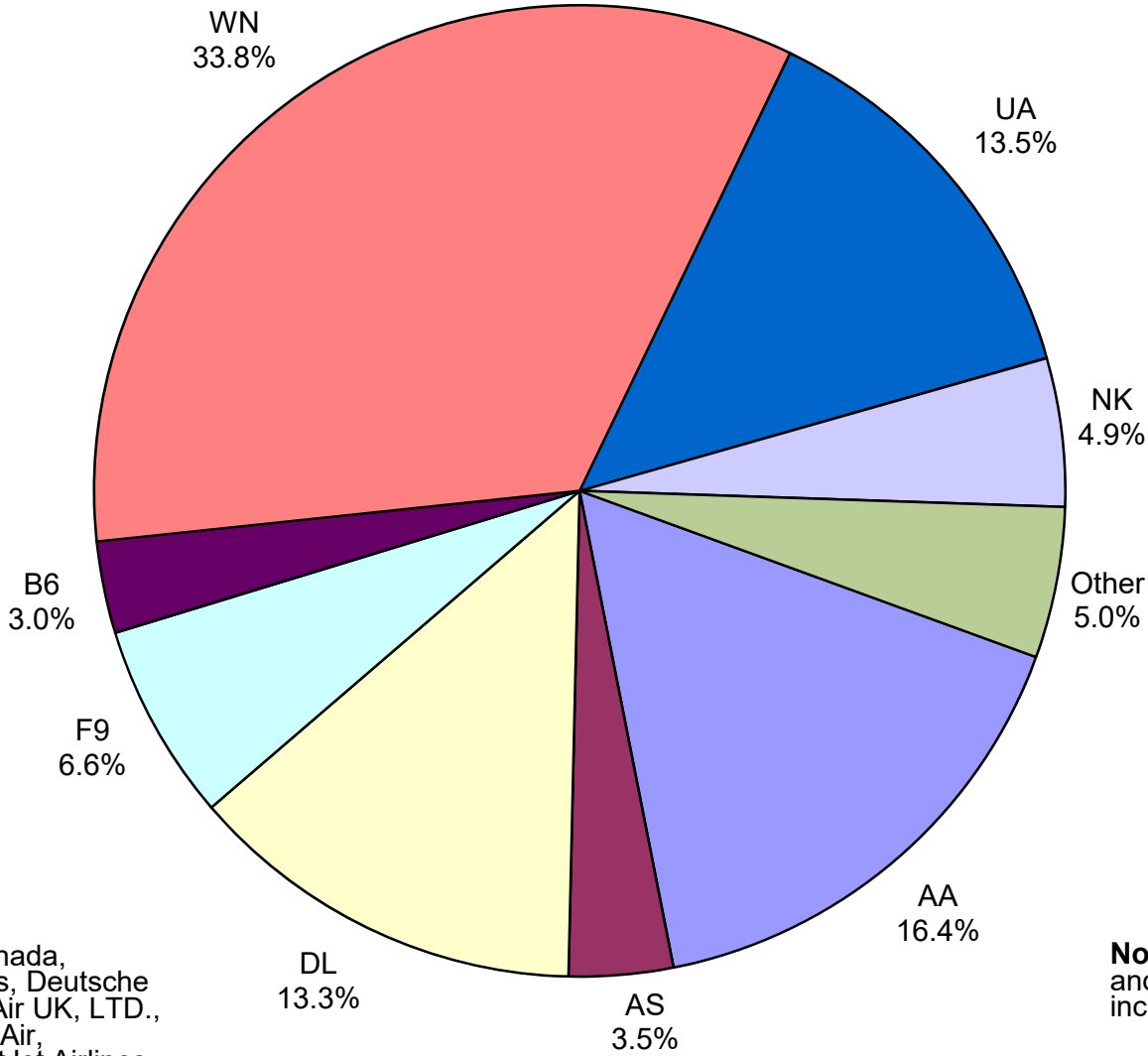
# Total Passengers July 2019



**Other:** Aeromexico, Air Canada LLC, Allegiant Air, British Airways, Deutsche Lufthansa AG, Norwegian Air UK, LTD, Sun Country, Swift Air, Vacation Express and WestJet Airlines

**Note:** American, Delta and United Airlines percentages include Affiliates.

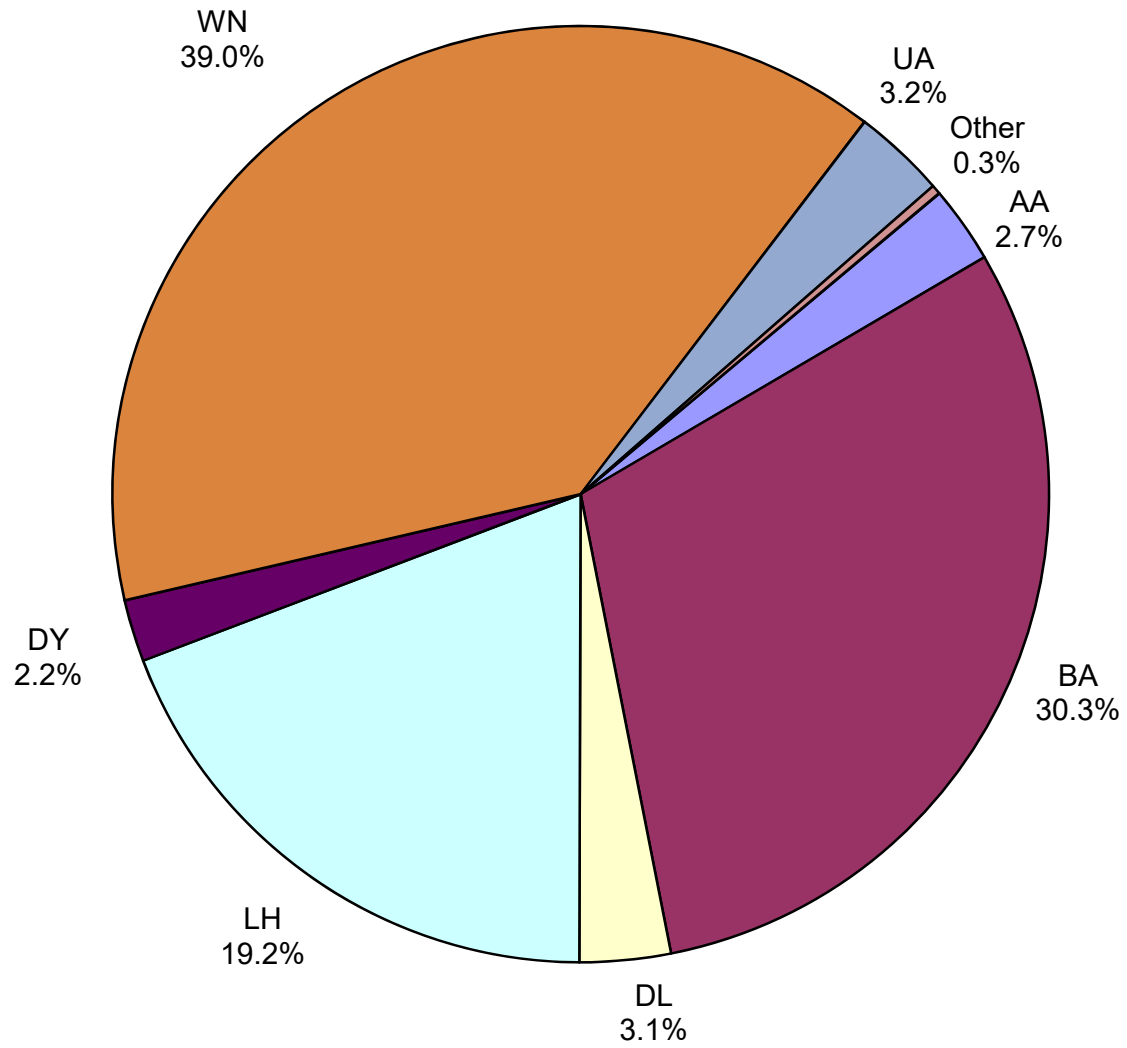
**All Passenger Carriers  
Enplaned Revenue Passengers  
July 2019**



**Other:** Aeromexico, Air Canada, Allegiant Air, British Airways, Deutsche Lufthansa AG, Norwegian Air UK, LTD., Sun Country Airlines, Swift Air, Vacation Express and WestJet Airlines

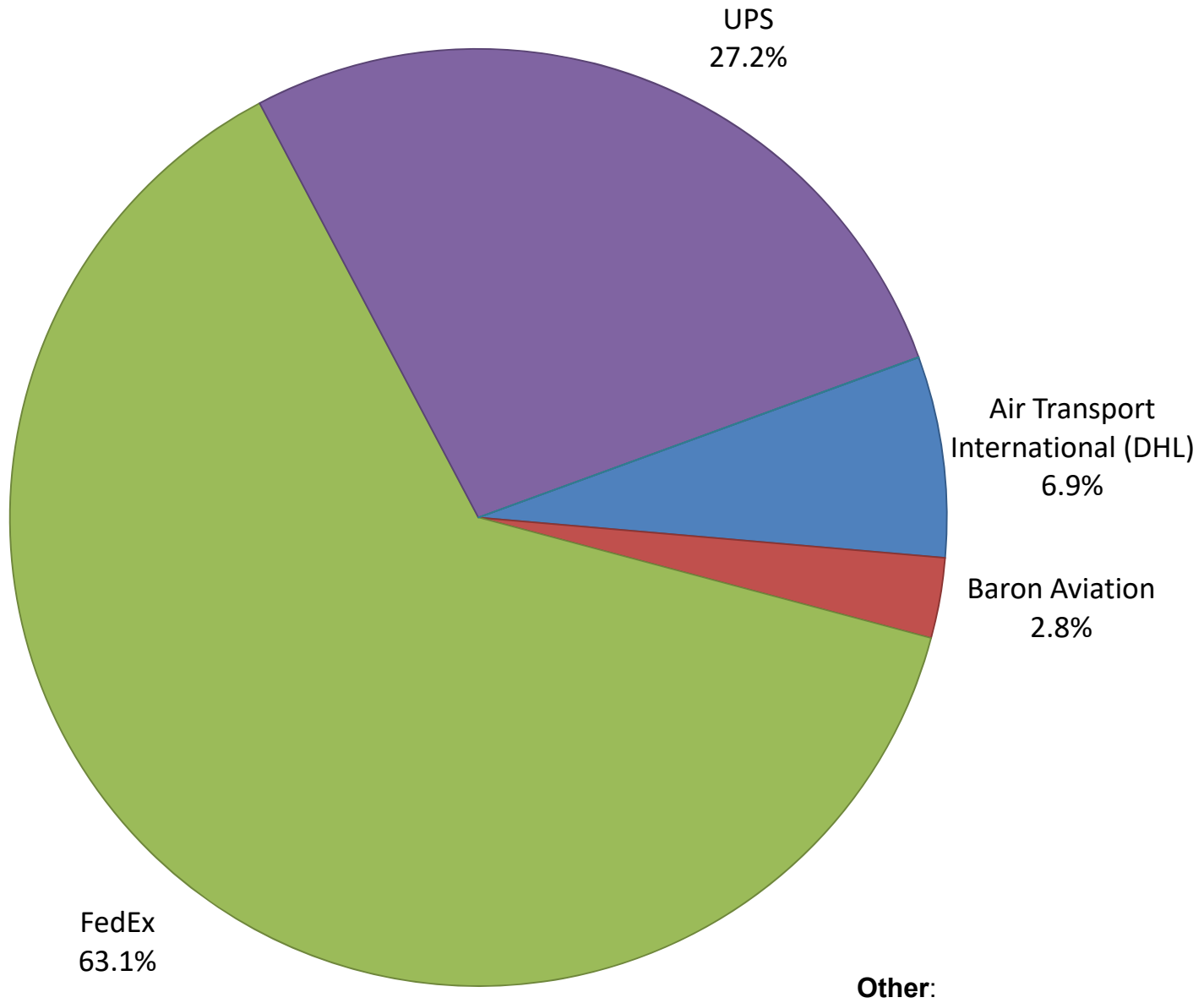
**Note:** American/US Airways, Delta and United Airlines percentages include Affiliates.

**AUS Belly Freight Market Shares  
July 2019**

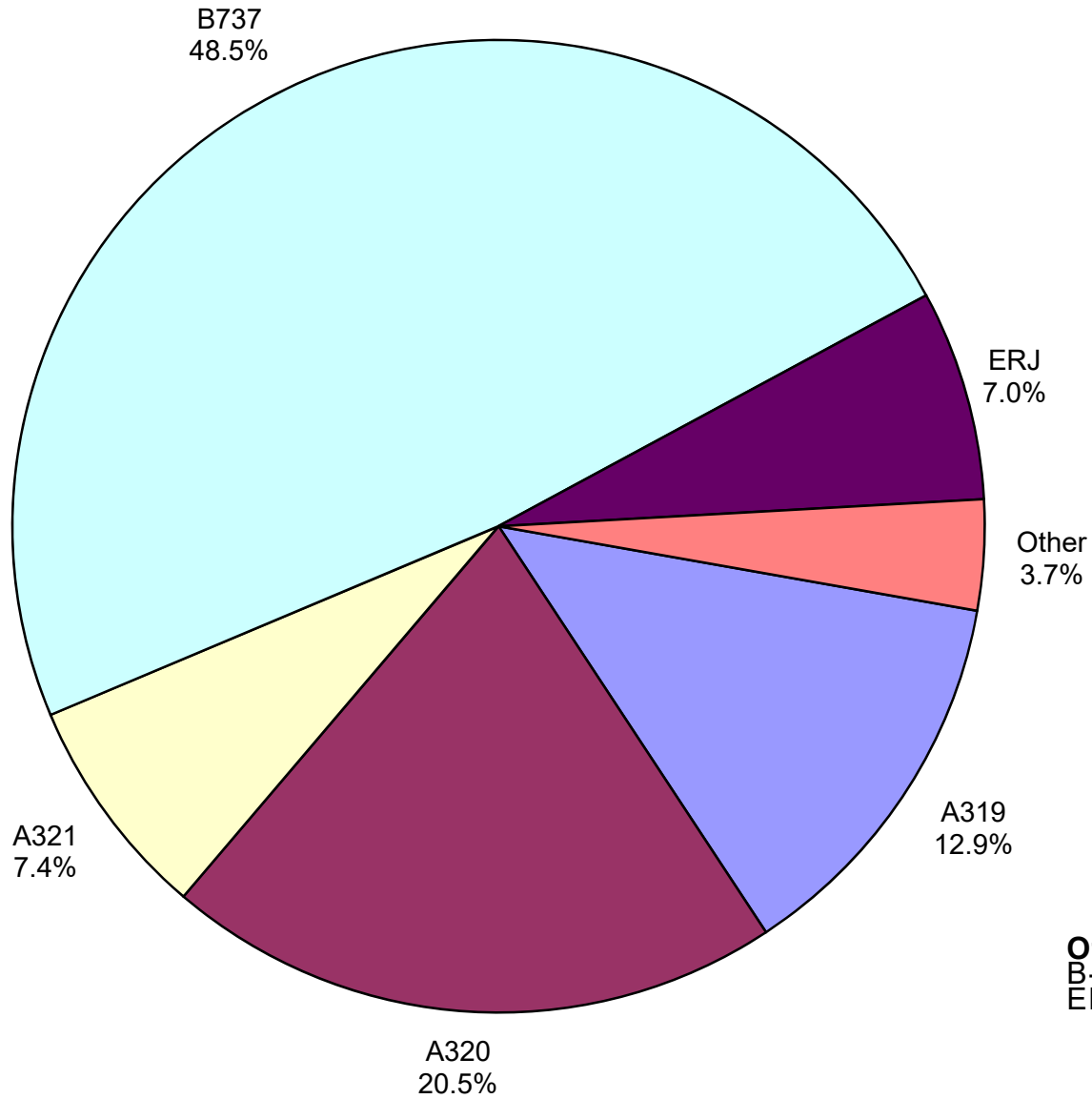


**Other = Alaska Airlines**

# Air Cargo Market Share July 2019

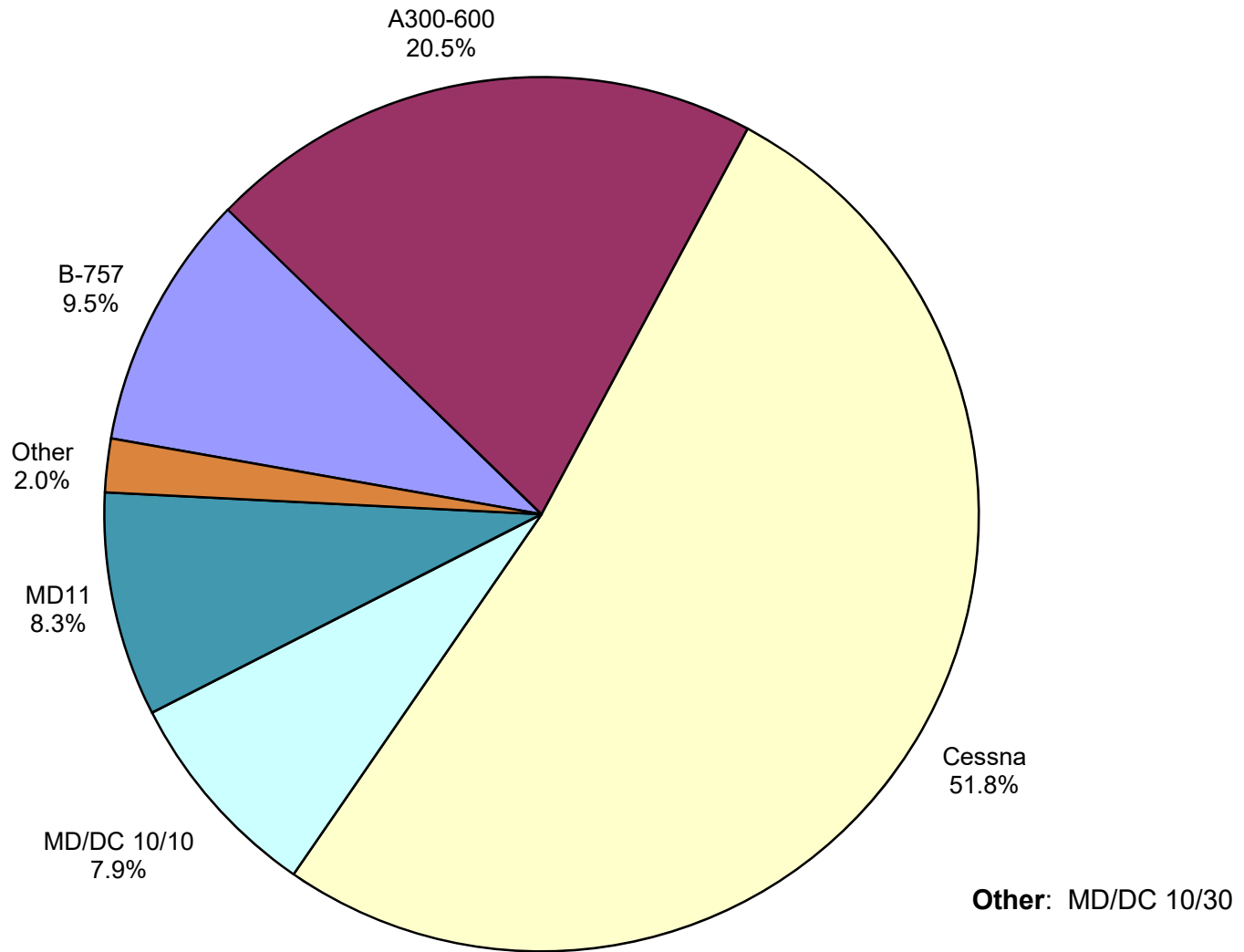


**AUS Scheduled Passenger Aircraft Fleet Mix  
July 2019**



**Other:** A330-300, B-747-400, B-717, B-757, B787-900, CRJ, EMB and MD-83

**AUS Scheduled Cargo Aircraft Fleet Mix  
July 2019**



# Austin-Bergstrom International Airport

## PAX Detail Report - July, 2019

Company	07/2019	07/2018	Period		YTD 2019	YTD 2018	YTD		2019 Share	2018 Share	Share Diff
			Difference	Change			Difference	Change			
ABC Aerolineas S.A. de C.V.	0	41	-41	-100.0	0	41	-41	-100.0	0.0	0.0	0.0
Aerovías de Mexico S.A. de C.V.	5,501	5,014	487	9.7	25,133	25,703	-570	-2.2	0.3	0.3	0.0
Air Canada	7,504	4,276	3,228	75.5	40,911	27,236	13,675	50.2	0.4	0.3	0.1
Air New Zealand	0	0	0	0.0	302	0	302	0.0	0.0	0.0	0.0
Alaska Airlines	55,821	50,973	4,848	9.5	354,242	317,501	36,741	11.6	3.6	3.5	0.1
Allegiant Air	24,481	35,765	-11,284	-31.6	131,975	196,502	-64,527	-32.8	1.3	2.2	-0.8
American Airlines	269,956	251,515	18,441	7.3	1,764,410	1,604,379	160,031	10.0	17.8	17.6	0.2
British Airways	18,424	17,480	944	5.4	109,978	97,585	12,393	12.7	1.1	1.1	0.0
Concesionaria Vuela Compañía de Aviación, S.A.P.I. de C.V.	0	2,144	-2,144	-100.0	434	9,356	-8,922	-95.4	0.0	0.1	-0.1
Condor Airlines	0	5,707	-5,707	-100.0	0	9,928	-9,928	-100.0	0.0	0.1	-0.1
Delta Air Lines	220,227	199,339	20,888	10.5	1,342,662	1,212,943	129,719	10.7	13.5	13.3	0.2
Deutsche Lufthansa AG	9,445	0	9,445	0.0	26,200	0	26,200	0.0	0.3	0.0	0.3
Frontier Airlines	105,916	131,818	-25,902	-19.6	462,085	615,346	-153,261	-24.9	4.7	6.8	-2.1
JetBlue Airways	50,841	54,785	-3,944	-7.2	331,333	349,727	-18,394	-5.3	3.3	3.8	-0.5
Miami Air International	0	0	0	0.0	869	309	560	181.2	0.0	0.0	0.0
Norwegian Air UK LTD	8,176	7,683	493	6.4	39,484	32,506	6,978	21.5	0.4	0.4	0.0
Scandinavian Airlines	0	0	0	0.0	423	697	-274	-39.3	0.0	0.0	0.0
Southwest Airlines	550,895	514,810	36,085	7.0	3,413,687	3,217,646	196,041	6.1	34.4	35.4	-0.9
Spirit Airlines	80,960	0	80,960	0.0	398,066	0	398,066	0.0	4.0	0.0	4.0
Sun Country Airlines	6,875	7,452	-577	-7.7	17,672	14,119	3,553	25.2	0.2	0.2	0.0
Swift Air	290	297	-7	-2.4	1,557	1,142	415	36.3	0.0	0.0	0.0
United Airlines	224,934	218,435	6,499	3.0	1,440,152	1,340,467	99,685	7.4	14.5	14.7	-0.2
Vacation Express	677	1,392	-715	-51.4	1,750	2,352	-602	-25.6	0.0	0.0	0.0
VIA Airlines	0	2,708	-2,708	-100.0	3,218	11,078	-7,860	-71.0	0.0	0.1	-0.1
Virgin America	0	0	0	0.0	0	11,117	-11,117	-100.0	0.0	0.1	-0.1
WestJet	2,093	0	2,093	0.0	6,204	0	6,204	0.0	0.1	0.0	0.1
<b>Report Totals</b>	1,643,016	1,511,634	131,382	8.7%	9,912,747	9,097,680	815,067	9.0%			

### Statistics Included in Report:

Domestic Passengers:	Enplaned Revenue, Deplaned Revenue, Enplaned Non-Revenue, Deplaned Non-Revenue
International Passengers:	Enplaned Revenue, Deplaned Revenue, Enplaned Non-Revenue, Deplaned Non-Revenue
International Pre-Cleared Passengers:	Enplaned Revenue, Deplaned Revenue, Enplaned Non-Revenue, Deplaned Non-Revenue
South Terminal Domestic Passengers:	Enplaned Revenue, Deplaned Revenue, Enplaned Non-Revenue, Deplaned Non-Revenue



# Austin-Bergstrom International Airport

## Summary Landing Report

### Landing Type: Total

Month	2019		2018		2017		% Change 2019 - 2018		% Change 2018 - 2017	
	Count	Weight	Count	Weight	Count	Weight	Count	Weight	Count	Weight
January	5,348	733,746,679	5,086	688,923,110	4,768	612,688,871	5.15%	6.51%	6.67%	12.44%
February	5,040	692,708,930	4,706	637,500,756	4,357	552,711,639	7.10%	8.66%	8.01%	15.34%
March	5,964	825,483,911	5,643	760,648,260	5,307	685,661,659	5.69%	8.52%	6.33%	10.94%
April	5,899	815,621,798	5,797	793,367,736	5,179	689,402,051	1.76%	2.81%	11.93%	15.08%
May	6,294	881,747,150	6,117	831,431,763	5,529	736,484,083	2.89%	6.05%	10.63%	12.89%
June	6,322	890,410,020	6,211	852,438,818	5,603	752,628,599	1.79%	4.45%	10.85%	13.26%
July	6,551	915,103,306	6,346	869,502,671	5,698	763,088,836	3.23%	5.24%	11.37%	13.95%
August			6,245	861,046,997	5,490	741,110,019			13.75%	16.18%
September			5,737	790,731,351	5,046	679,381,339			13.69%	16.39%
October			6,078	846,310,860	5,448	743,973,610			11.56%	13.76%
November			5,684	780,994,101	5,289	718,179,948			7.47%	8.75%
December			5,600	761,317,385	5,442	737,424,963			2.90%	3.24%
<b>Totals for Selected Period</b>	41,418	5,754,821,794	39,906	5,433,813,114	36,441	4,792,665,738	3.79%	5.91%	9.51%	13.38%
<b>Yearly Totals</b>	41,418	5,754,821,794	69,250	9,474,213,808	63,156	8,412,735,617			9.65%	12.62%