

Williamson Creek - Richmond Tributary Rehabilitation

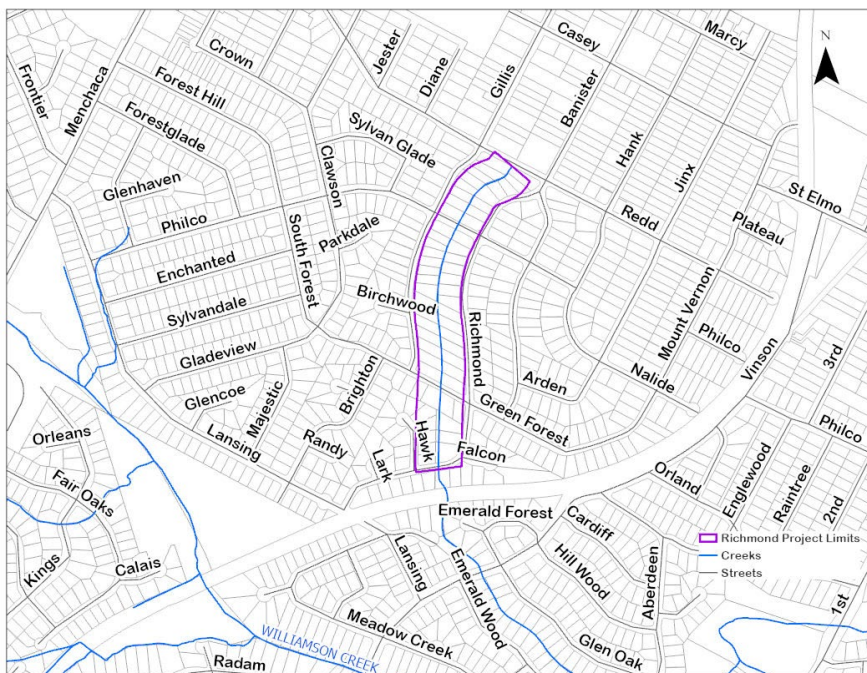
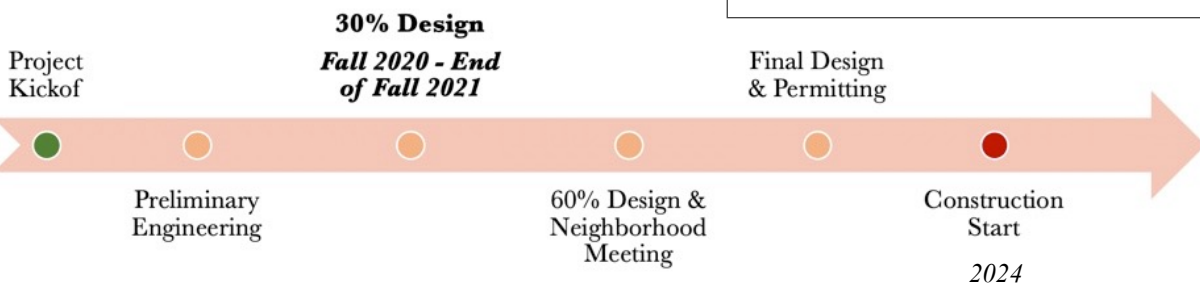


The Watershed Protection Department is designing a Capital Improvement Project (CIP) to stabilize erosion along the Richmond Tributary to Williamson Creek. This project will repair and stabilize approximately 1,800 linear feet along the channel banks to protect yards, trees, buildings, and infrastructure from future erosion. It will also replace flood-prone culverts at Philco Drive and Green Forest Drive.



Project Benefits:

- Stabilization of the creek to prevent loss of land and fences from erosion
- Creek beautification through the use of natural and native materials
- Relocation of a wastewater line
- Replacement of fences damaged by erosion
- Upgrading culverts to reduce flood risks



Project Contact:

Eric Loucks, P.E.

Phone: 512-974-2534

Email: eric.loucks@austintexas.gov

More Information:

www.austintexas.gov/RichmondTributary