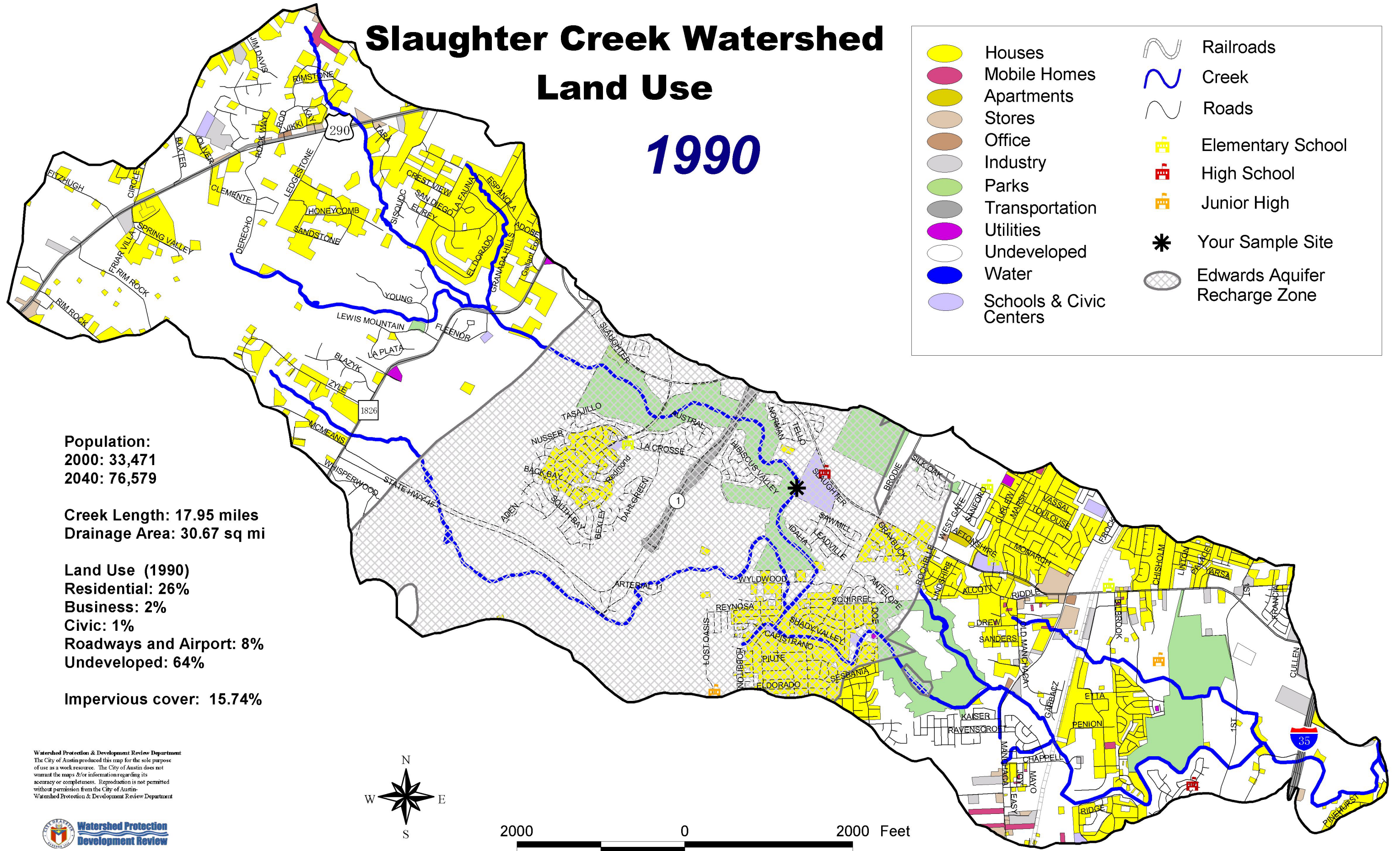
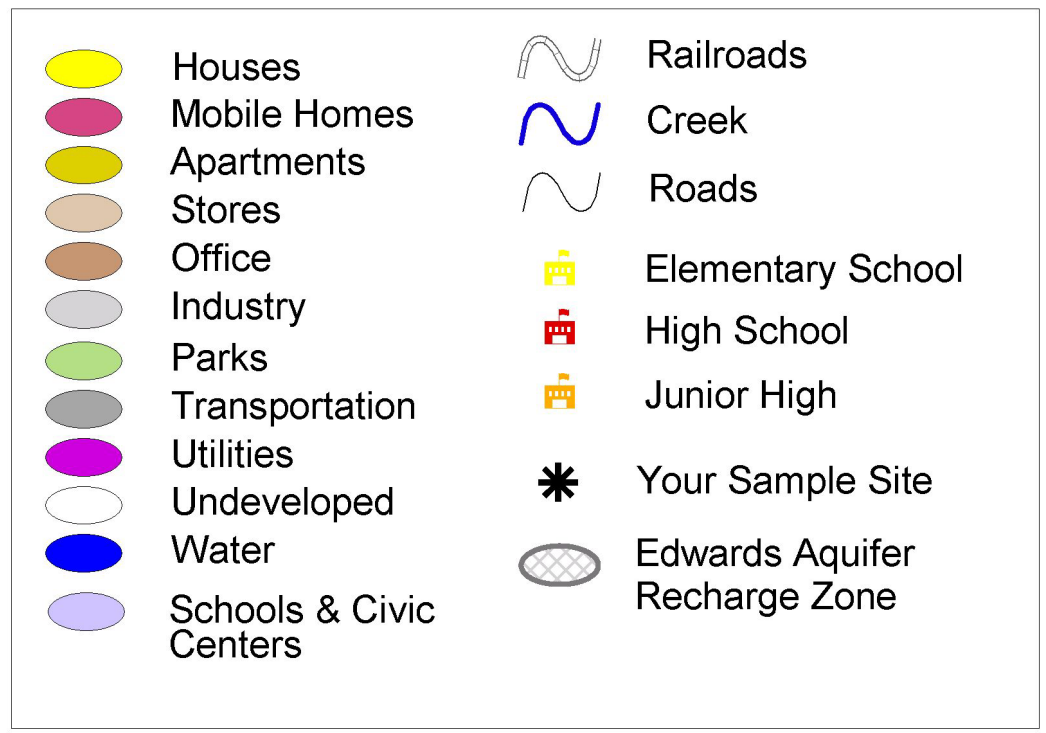


# Slaughter Creek Watershed Land Use 1990



Population:  
2000: 33,471  
2040: 76,579

Creek Length: 17.95 miles  
Drainage Area: 30.67 sq mi

Land Use (1990)  
Residential: 26%  
Business: 2%  
Civic: 1%  
Roadways and Airport: 8%  
Undeveloped: 64%

Impervious cover: 15.74%

Watershed Protection & Development Review Department  
The City of Austin produced this map for the sole purpose of use as a work resource. The City of Austin does not warrant the maps &/or information regarding its accuracy or completeness. Reproduction is not permitted without permission from the City of Austin.  
Watershed Protection & Development Review Department

