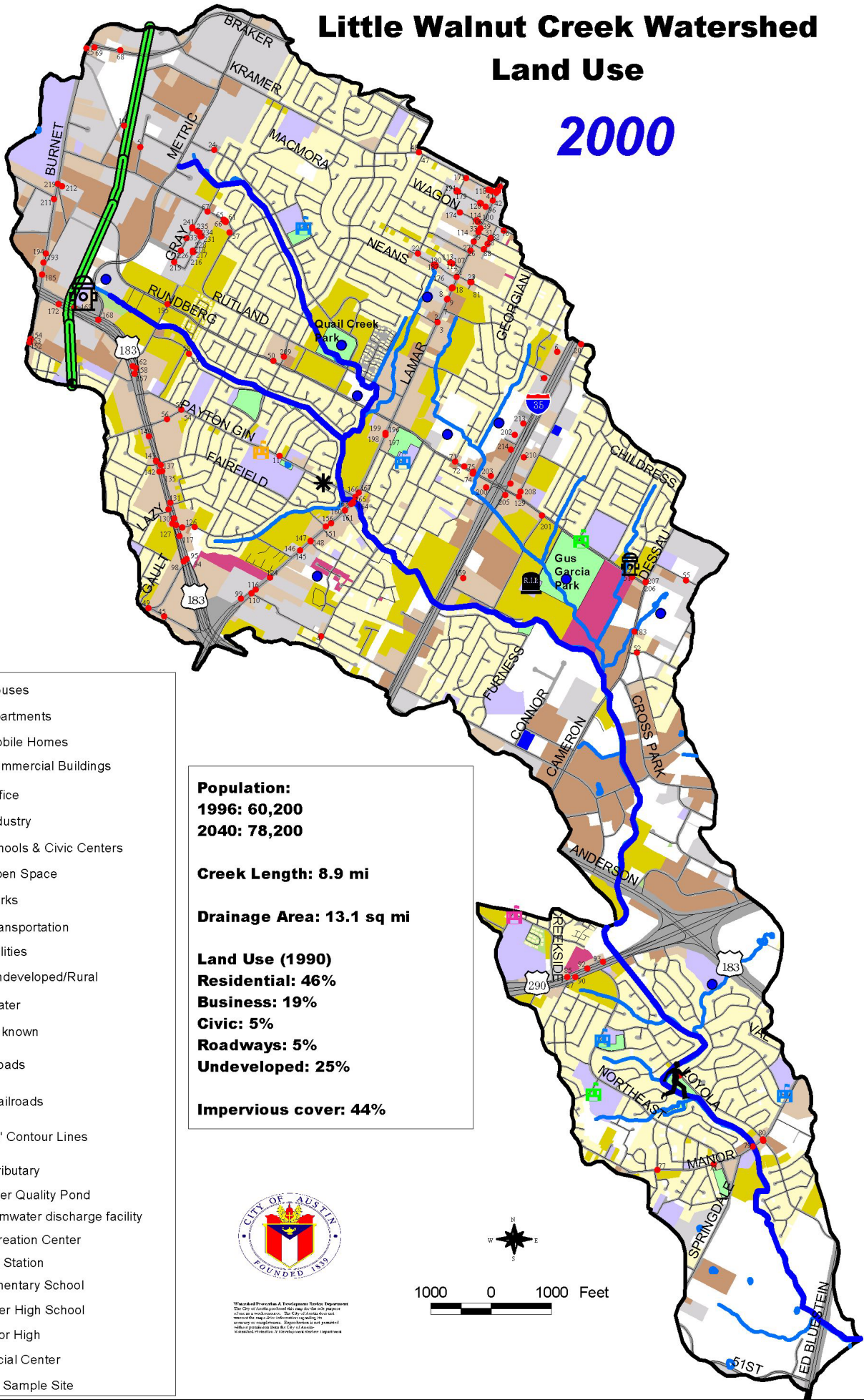


Little Walnut Creek Watershed Land Use

2000



- Houses
- Apartments
- Mobile Homes
- Commercial Buildings
- Office
- Industry
- Schools & Civic Centers
- Open Space
- Parks
- Transportation
- Utilities
- Undeveloped/Rural
- Water
- Unknown
- Roads
- Railroads
- 10' Contour Lines
- Tributary
- Water Quality Pond
- Stormwater discharge facility
- Recreation Center
- Fire Station
- Elementary School
- Lanier High School
- Junior High
- Special Center
- Your Sample Site

Population:
 1996: 60,200
 2040: 78,200

Creek Length: 8.9 mi

Drainage Area: 13.1 sq mi

Land Use (1990)
 Residential: 46%
 Business: 19%
 Civic: 5%
 Roadways: 5%
 Undeveloped: 25%

Impervious cover: 44%



Watershed Protection & Development Planning Department
 The City of Austin provided the map to the best of its ability and makes no warranty, expressed or implied, for any use of the map other than for general informational purposes. The City of Austin does not accept any liability for any errors or omissions on the map. The City of Austin is not responsible for any damages or losses resulting from the use of the map. The City of Austin is not responsible for any damages or losses resulting from the use of the map.

