

Setting your S.I.T.E.S. on Gold

Building and maintaining a S.I.T.E.S. certified landscape.

 Dell Seton Medical Center at The University of Texas





1. Compost
2. Alternative Fuel Equipment
3. Creek Restoration
4. All organic
5. All native (invasive removal)
6. Soil Remediation
7. Rooftop Garden

Compost

- Have an on-site composting operation using local ingredients.

Facility pile



Trinity Garage piles





Grounds for Grounds



Program started in April of 2017

Collect around 1 ton of coffee grounds from Starbucks and other vendors.

Plans to expand to all of campus.

Biodynamics



Data collection



Captures temperature, moisture, and salinity.

Compost tea

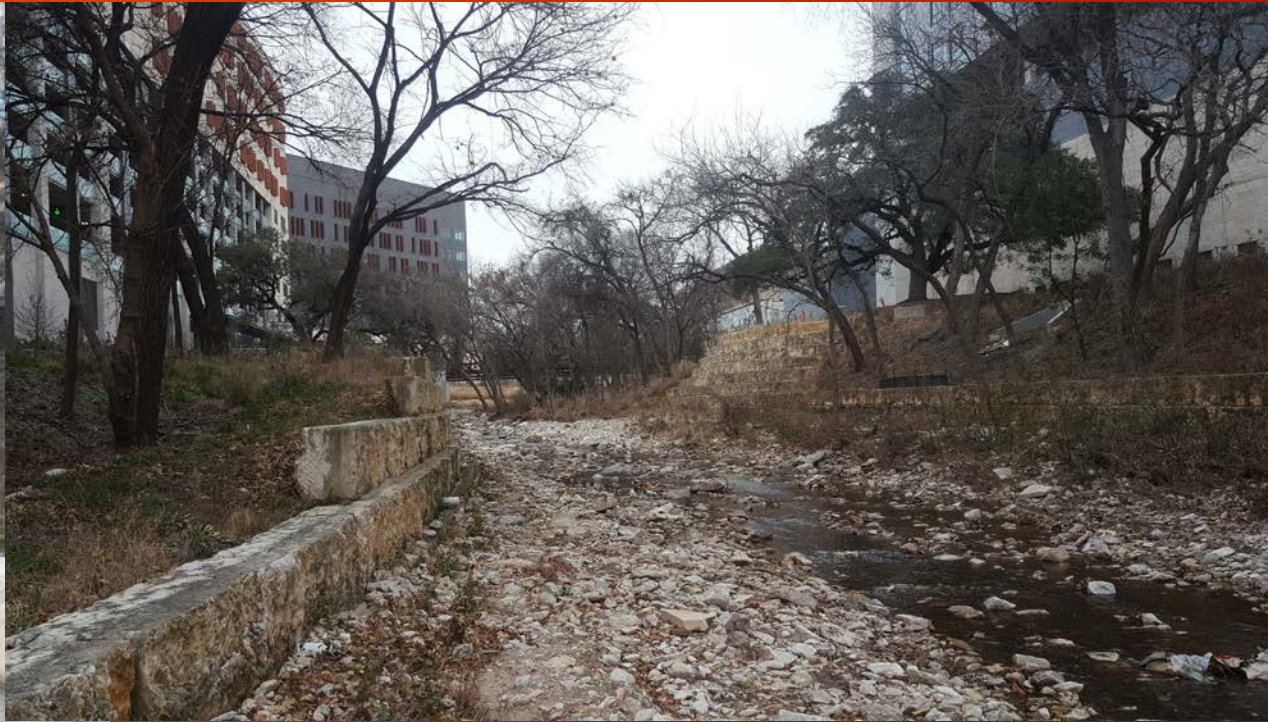
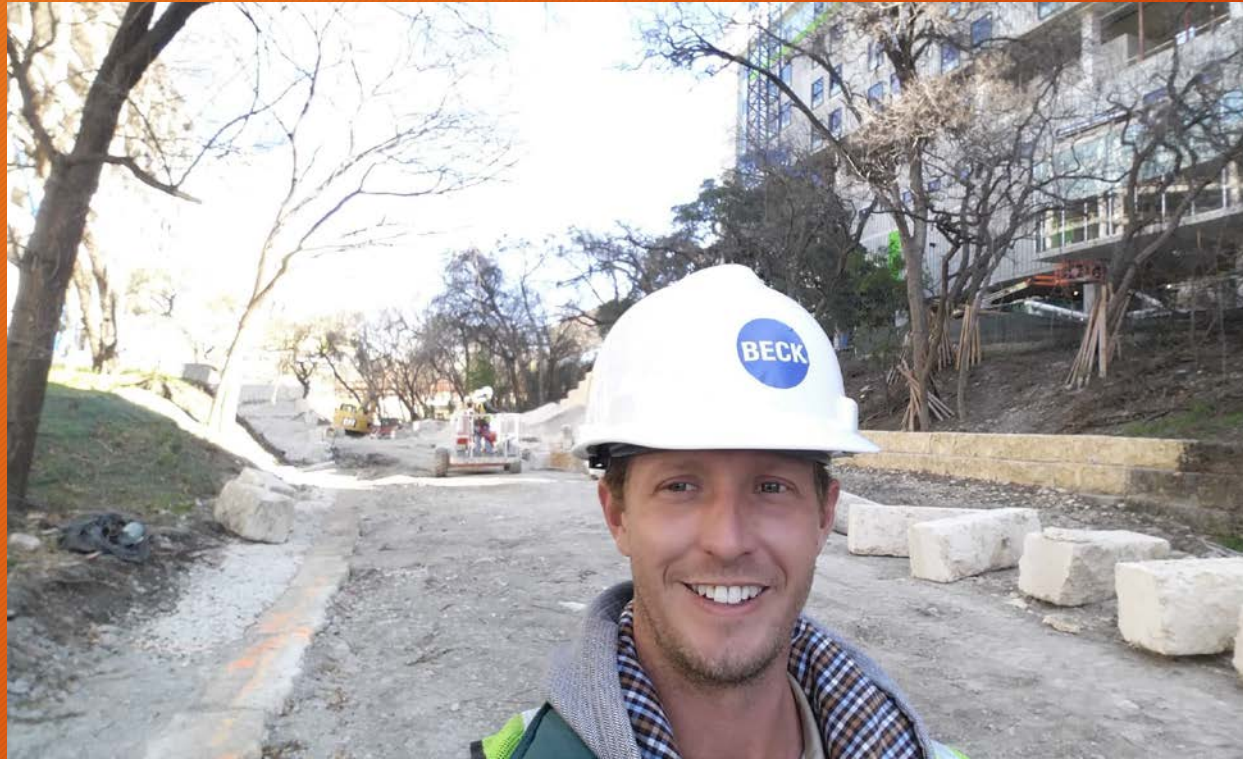


Alternative Fuel Equipment

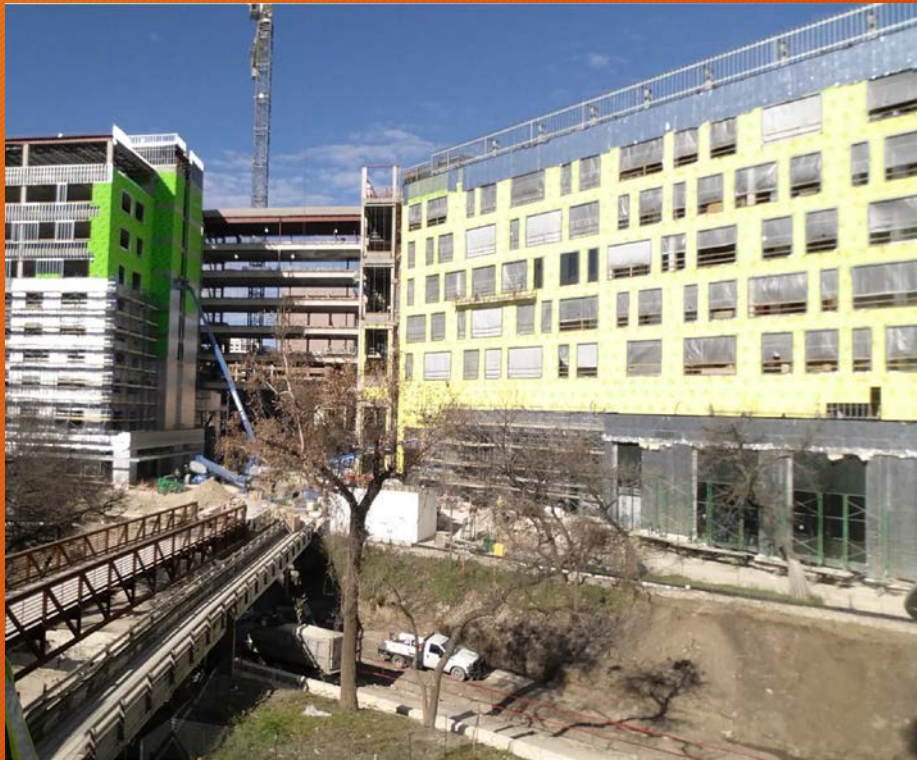




Waller Creek







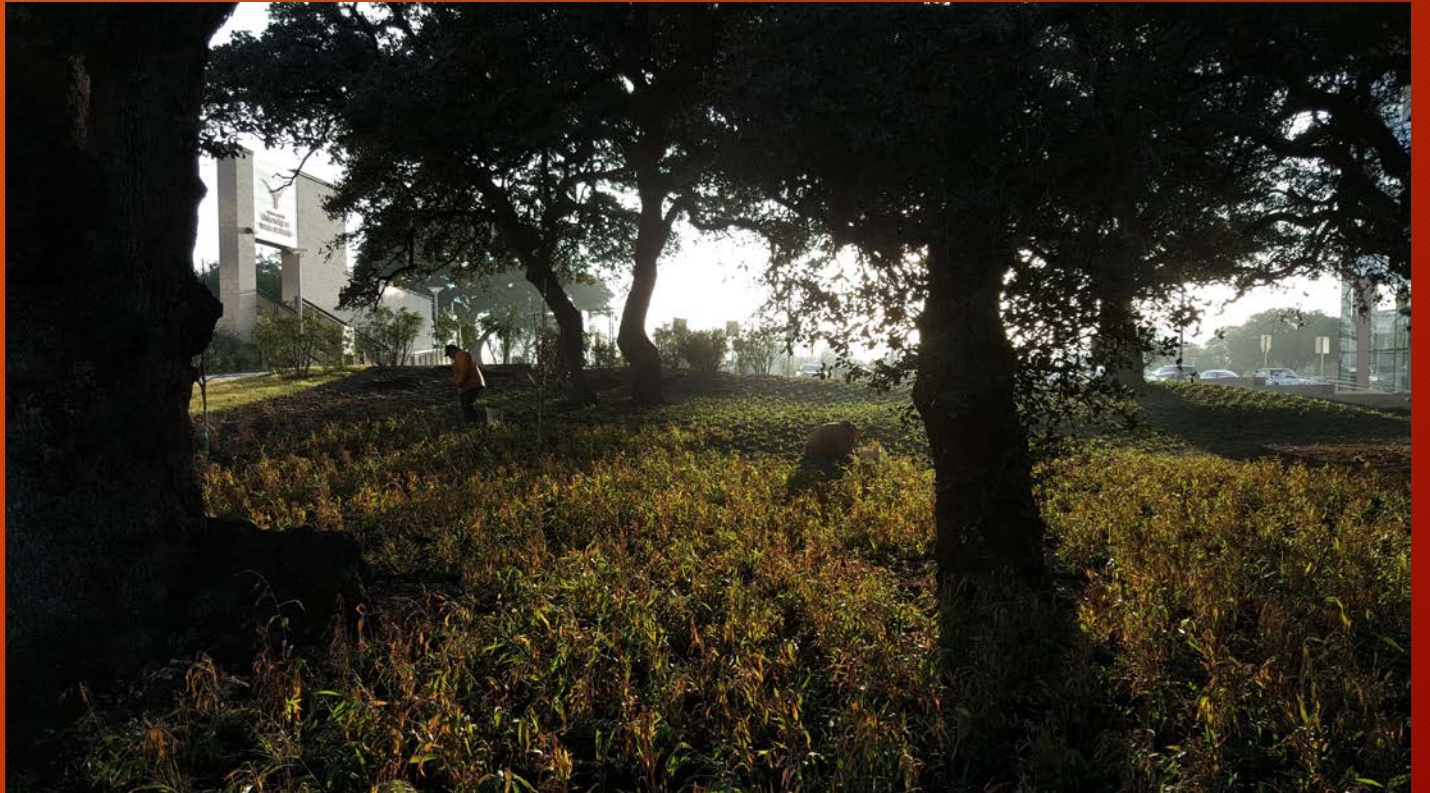








All Native





Identification Education



Soil testing and remediation



6 locations chosen.
Yearly tests

Rooftop Garden











Bumps in the road

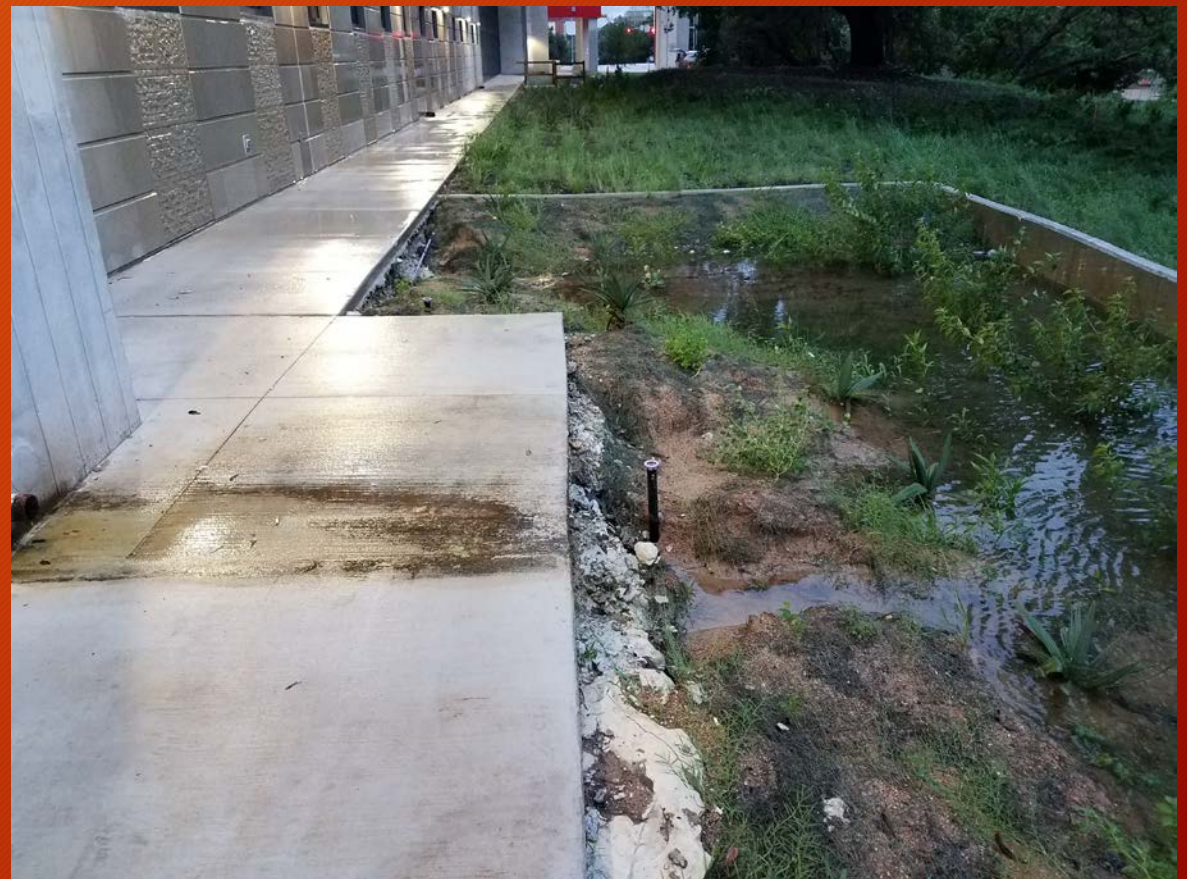




Safety later



Bioswales



Questions?

