

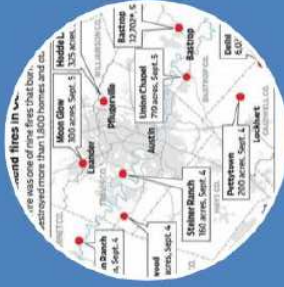
# Landscape Professionals Training

Firewise Landscaping and  
Wildflower Center Tours



# WAKING UP TO WILDFIRE

## 2011 the Dawn of WUI Fires in Texas



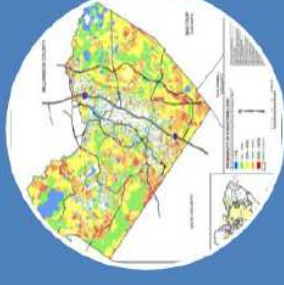
Multiple simultaneous starts



Relatively small wildfires



Relatively large losses



More exposures than available resources





## **Steiner Ranch Fire**

**125 acres**

**35 homes lost**



## **Pinnacle Fire**

**100 acres**

**10 homes lost**

**12 damaged**

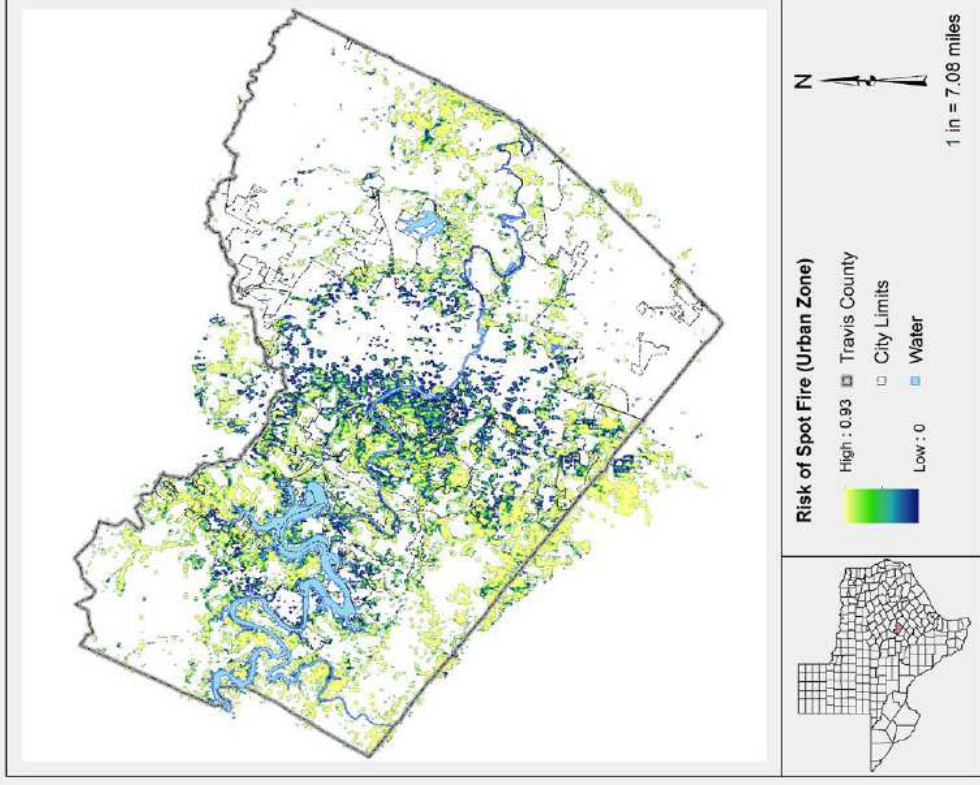


# Ember Storms

Embers cause spot fires over a mile ahead of the main fire.

Spot fires can happen anywhere embers land on something flammable.

Embers ignite homes which produce embers that ignite other homes.



# FIREWISE COMMUNITIES/USA CRITERIA

1. Evaluate community wildfire risk
2. Develop an action plan
3. Host Annual Firewise Day
4. Investment time
5. Apply initially, renew annually



**2017 Grow Green Landscape Professional Training**

**Day Five: Plants and Trees**

**March 17, 2017 9:00 a.m. - 4:00 p.m.**

Lady Bird Johnson Wildflower Center 4801 La Crosse Ave

This day qualifies for 3 Texas Nursery & Landscape Association CEU's

Topic:	Description:	Speaker:	Time:
<b>Introduction</b>	Program introduction and current state of fire department response and preparedness for wildfire safety in Austin.	Chief Dawn Clopton, Austin Fire Department Wildfire Division	9 a.m. - 9:10 a.m.
<b>What and Where is the WUI (Wildland-Urban Interface)?</b>	How GIS tools are used to estimate wildfire risk in Austin and Travis County and how the City of Austin is accomplishing fuel mitigation work on public lands adjacent to existing homes and development.	Nate Casebeer, David Gimmich, Austin Fire Department Wildfire Division	9:10 a.m. - 9:50 a.m.
<b>Insurance Risk Ratings</b>	Insurability may drive the need for increased standards, including firewise landscaping, for wildfire safety in Central Texas. USAAhas been actively engaged with this issue as it has emerged in recent years.	Rob Galbrath USAA Insurance Company	9:50 a.m. - 10:30 a.m.
<b>Break - Embers video</b>			

<b>Firewise Communities</b>	Perspective from a proactive community with implications for using landscape professionals to make adjustments in existing formal landscapes to improve wildfire safety.	Bill Childs, Versante Canyon Firewise Community	10:45 a.m. - 11:15 a.m.
<b>Landscape Design and Maintenance to Reduce Wildfire Risk in the WUI</b>	Being embers aware, creating defensible space, and being aware of wildfire hazards can help avoid common risks in managed landscapes.	Mark Baker, Austin Fire Department Wildfire Division	11:15 a.m. to noon
<b>Lunch on your own</b>			
<b>Wildflower Center Tours</b>	There will be a number of different combination tours to choose from. Each tour package option <i>will include some, but not all of the following:</i> Cave Tour, Fire Assessment, Family & Pollinator Garden Tour, Arboretum and/or the Milkweed Project. Attendees will be able to choose their tour the week of the training.	Lady Bird Johnson Wildflower Center Staff	1:00 p.m. – 4:00 p.m.  (with 10 minute breaks between activities)