




## MEMORANDUM

**TO:** Parks and Recreation Board

**FROM:** Kimberly A. McNeeley, M.Ed., CPRP, Director   
Austin Parks and Recreation Department

**DATE:** May 10, 2022

**SUBJECT:** Update on Disc Golf Courses – Projects and Impacts

---

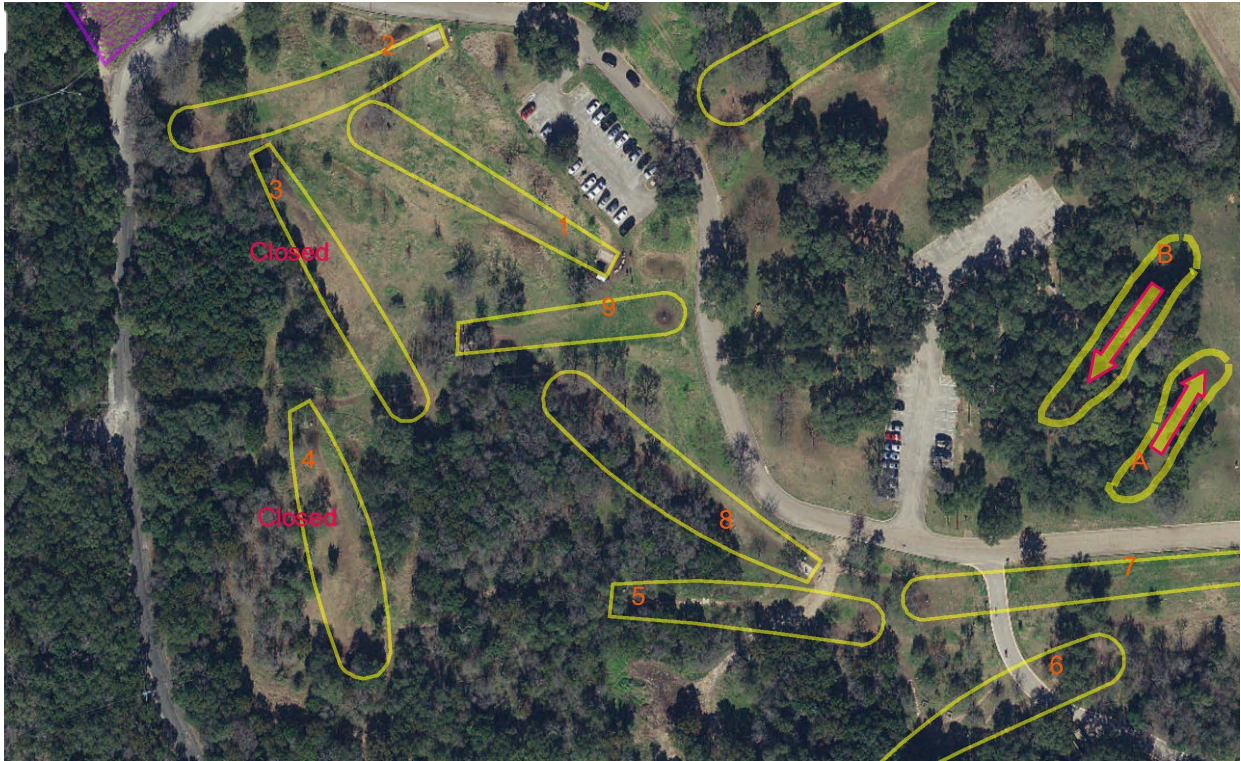
The City of Austin park system contains six-disc golf courses including courses at Bartholomew District Park, Zilker Metropolitan Park, Mary Moore Searight Metropolitan Park, Roy G. Guerrero Colorado River Metropolitan Park, Circle C Ranch Metropolitan Park and a nine-hole course at Davis Spring Special Park. Additional information on the history of the Parks and Recreation Department (PARD) disc golf facilities can be found at [Austin Parks and Recreation Disc Golf Courses | AustinTexas.gov](#)

Multiple City Departments have projects underway that will impact the City of Austin disc golf courses on parkland. This memo provides information on the impacts and additional department planning efforts underway.

### **Zilker Metropolitan Park Maintenance Barn Replacement**

PARD began planning for the replacement of the Zilker Maintenance Barn more than ten years ago. The existing facility is undersized, in poor condition and no longer meets the Department's needs. After addressing multiple hurdles, the project began construction in the summer of 2021. More information on the project can be found at [Zilker Metropolitan Park Maintenance Barn Replacement | AustinTexas.gov](#)

As part of the project, two disc golf holes were impacted and have been closed. Temporary signage has been installed to direct players on how to continue the course. Two temporary holes were established in the fall of 2021 and the installation of two permanent replacement holes has begun. The temporary holes will remain in place and open until the permanent holes are installed, anticipated to be complete this summer. Any additional changes to the course have been put on hold so that the Zilker Vision Plan can provide public input on the amenities in the park. For more information on the proposed concepts for Zilker Metropolitan Park, please visit [Zilker Metropolitan Park Vision Plan | AustinTexas.gov](#)



Zilker Metropolitan Park – closed and temporary holes

### **Roy G. Guerrero Colorado River Park Channel Restoration and Bridge Repairs**

During the 2015 Memorial Day rain event, the concrete bridge over Country Club Creek sustained major structural damage and collapsed. PARD has been working closely with the Watershed Protection Department to provide a permanent solution to stabilize the creek channel embankments and provide a replacement bridge. For more information on the project timeline, please visit [Roy G. Guerrero Colorado River Park Channel and Bridge Repairs | AustinTexas.gov](https://www.austintexas.gov/roy-g-guerrero-colorado-river-park-channel-and-bridge-repairs) The project will have minor impacts to the disc golf course, clipping the fairways of two holes. No adjustments to the course are required and play will not be disrupted. The channel stabilization project is currently in the bidding phase. Construction is anticipated to begin in summer 2022 and be completed in summer/fall 2024.

PARD staff has determined that an area on the west side of Country Club Creek in the park is appropriate for a nine-hole, beginners' recreational course in addition to the existing 18-hole advanced professional course. The existing course will undergo improvements to accommodate and incorporate moving existing holes from the area proposed for the beginner's recreational course. Staff is working on final drawings and anticipate beginning work in late summer of 2022 and be completed in early 2023.

### **Bartholomew Park Tannehill Creek Stormwater Improvements, and Public Works Safe Routes to School**

The Watershed Protection Department is in the process of developing plans to improve failing stormwater infrastructure within Tannehill Creek in Bartholomew Park. The concepts in review will have minimal impact to the disc golf course. Staff has reached out to the disc golf community and has determined that the course at Bartholomew is seen as having limited play value and is significantly

underutilized in its current configuration. Due to erosion, staff has sought input from the Watershed Protection Department and stakeholders and is considering alternatives that would ensure a sustainable disc golf course that provides increased interest and challenge level, while minimizing environmental impacts. PARD will continue to work on proposed layout changes and will discuss the changes with the disc golf community before implementation.

Public Works Safe Routes to School is also proposing to incorporate the construction of a sidewalk/urban trail through the park along with the drainage improvements project. The new sidewalk will connect the park entrance at 51<sup>st</sup> Street and Tilley Street to Shady Brook Lane to provide a new route and connection to Blanton Elementary School. This trail is supported through the park vision plan adopted in 2009 and the Eastlink Trail Plan completed by the Austin Parks Foundation in 2021.

### **Circle C Metropolitan Park**

PARD and the Watershed Protection Department have identified areas of concentrated drainage that have eroded portions of the disc golf course in the park. PARD staff will develop options to redirect drainage to reduce erosion issues in the future.

PARD is also discussing opportunities to broaden access to disc golf to youth through our recreation centers and AISD programs. Potential locations in review include Gus Garcia District Park and Barton Hills Elementary School Park.

Should you have any questions, please contact my office at (512) 974-6717.

Cc: Jodi Jay, MBA, CPRP, Assistant Director  
Liana Kallivoka, PhD, PE, LEED Fellow, Assistant Director  
Lucas Massie, M.Ed., CPRP, Assistant Director  
Suzanne Piper, DBA, Chief Administrative Officer